



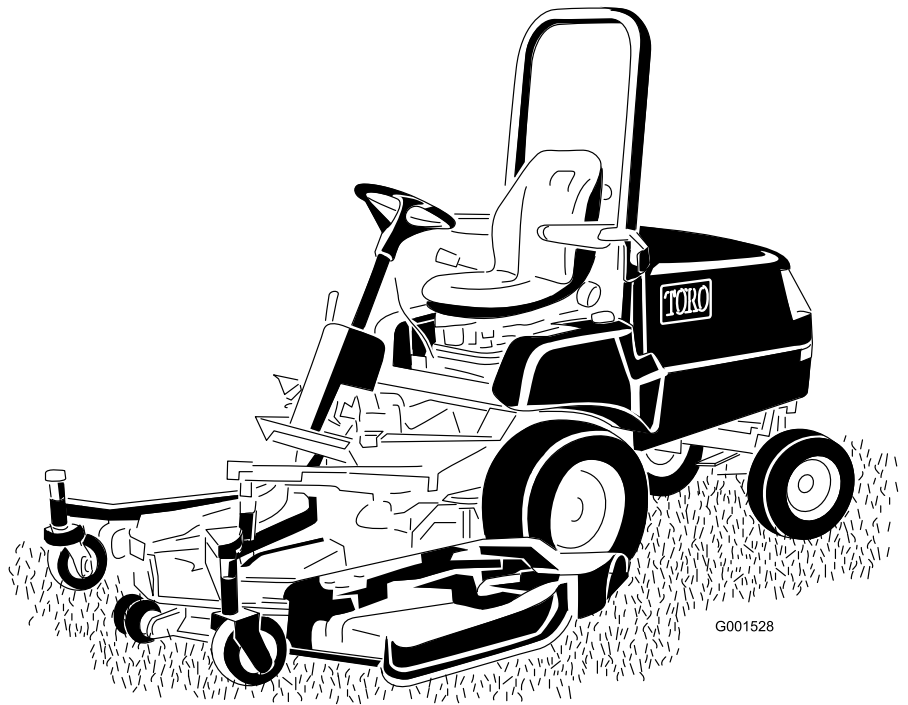
Count on it.

Operator's Manual

Groundsmaster® 3280-D Traction Unit

Model No. 30344—Serial No. 402409001 and Up

Model No. 30345—Serial No. 402409001 and Up



G001528



This product complies with all relevant European directives; for details please see the separate product specific Declaration of Conformity (DOC) sheet.

⚠ WARNING

**CALIFORNIA
Proposition 65 Warning**

This product contains a chemical or chemicals known to the State of California to cause cancer, birth defects, or reproductive harm.

Diesel engine exhaust and some of its constituents are known to the State of California to cause cancer, birth defects, and other reproductive harm.

It is a violation of California Public Resource Code Section 4442 or 4443 to use or operate the engine on any forest-covered, brush-covered, or grass-covered land unless the engine is equipped with a spark arrester, as defined in Section 4442, maintained in effective working order or the engine is constructed, equipped, and maintained for the prevention of fire.

The enclosed engine owner's manual is supplied for information regarding the US Environmental Protection Agency (EPA) and the California Emission Control Regulation of emission systems, maintenance, and warranty. Replacements may be ordered through the engine manufacturer.

Introduction

This machine is a multi-purpose machine intended to be used by professional, hired operators in commercial applications. It is designed primarily for mowing grass on well-maintained lawns in parks, golf courses, sports fields, and on commercial grounds.

Important: To maximize the safety, performance, and proper operation of this machine, carefully read and fully understand the contents of this *Operator's Manual*. Failing to follow these operating instructions or to receive proper training may result in injury. For more information on safe operating practices, including safety tips and training materials, go to www.Toro.com.

You may contact Toro directly at www.Toro.com for product and accessory information, help finding a dealer, or to register your product.

Whenever you need service, genuine Toro parts, or additional information, contact an Authorized Service

Dealer or Toro Customer Service and have the model and serial numbers of your product ready. **Figure 1** identifies the location of the model and serial numbers on the product. Write the numbers in the space provided.

Important: With your mobile device, you can scan the QR code on the serial number decal (if equipped) to access warranty, parts, and other product information.

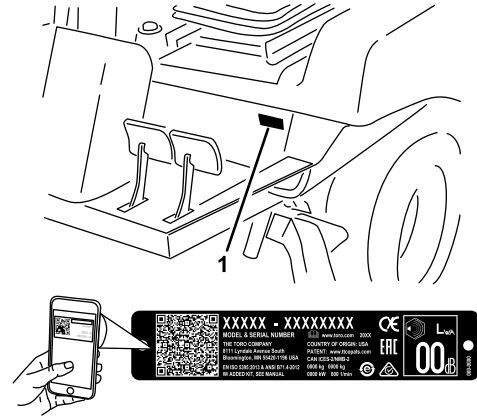


Figure 1

g244253

1. Model and serial number location

Model No. _____

Serial No. _____

This manual identifies potential hazards and has safety messages identified by the safety-alert symbol (**Figure 2**), which signals a hazard that may cause serious injury or death if you do not follow the recommended precautions.



Figure 2

g000502

1. Safety-alert symbol

This manual uses 2 words to highlight information. **Important** calls attention to special mechanical information and **Note** emphasizes general information worthy of special attention.

Contents

Safety	4	Engine Safety	45
General Safety	4	Servicing the Air Cleaner	45
Safety and Instructional Decals	5	Servicing the Engine Oil.....	46
Setup	12	Fuel System Maintenance	48
1 Installing the Steering Wheel.....	13	Servicing the Water Separator	48
2 Installing the Hood Handle	13	Cleaning the Fuel Tank	48
3 Installing the Seat	14	Inspecting the Fuel Lines and	
4 Installing the Seat Belt	14	Connections.....	48
5 Installing the Manual Tube	14	Bleeding the Air from the Fuel-Injector	
6 Adjusting the Roll Bar.....	15	Tubing.....	48
7 Activating and Charging the Battery	15	Electrical System Maintenance	49
8 Checking the Fluid Levels	17	Electrical System Safety	49
9 Checking the Air Pressure in the		Servicing the Battery.....	49
Tires.....	17	Accessing the Fuse Block and Standard	
10 Adjusting the Weight Transfer of the		Control Module	51
Mower Deck.....	18	Accessing the Fuses.....	52
11 Installing the Rear Weights.....	19	Standard Control Module (SCM).....	52
12 Using the Hardware for Attachments	21	Servicing the Wire Harness	53
Product Overview	22	Drive System Maintenance	53
Controls	22	Torqueing the Wheel-Lug Nuts.....	53
Brakes.....	23	Maintaining the Rear Axle.....	54
Specifications	26	Maintaining the Bidirectional Clutch	55
Attachments/Accessories	27	Maintaining the Rear Wheel Alignment	56
Before Operation	27	Torquing the Bolts for the Steering-Cylinder	
Before Operation Safety	27	Mount.....	57
Accessing the Machine.....	28	Adjusting the Traction Drive for Neutral	57
Checking the Machine Daily	29	Adjusting the Steering Stops.....	59
Checking the Air Pressure in the Tires.....	29	Cooling System Maintenance	60
Checking the Interlock System.....	29	Cooling System Safety	60
Adding Fuel	30	Coolant Specification.....	60
Adjusting the Roll Bar	31	Checking the Cooling System and Coolant	
Adjusting the Tilt-Steering Control.....	32	Level	60
During Operation	33	Checking the Hood Screen and Radiator for	
General Safety	33	Debris	61
Rollover Protection System (ROPS)		Cleaning the Hood Screen and Radiator	61
Safety.....	33	Brake Maintenance	61
Slope Safety	33	Adjusting the Service Brakes	61
Starting the Engine	34	Adjusting the Parking-Brake-Interlock	
Shutting Off the Engine.....	34	Switch	62
Resetting the PTO Function.....	34	Belt Maintenance	63
Bleeding the Fuel-Injection Pump	35	Checking the Condition of the Alternator	
Operating Tips	35	Belt.....	63
After Operation	36	Tensioning the Alternator Belt	63
After Operation Safety	36	Servicing the PTO Belt.....	63
Pushing or Towing the Machine	36	Controls System Maintenance	64
Hauling the Machine	37	Adjusting the PTO-Clutch Gap.....	64
Maintenance	38	Adjusting the Traction Pedal	65
Recommended Maintenance Schedule(s)	38	Hydraulic System Maintenance	66
Daily Maintenance Checklist.....	40	Hydraulic System Safety.....	66
Pre-Maintenance Procedures	41	Hydraulic Fluid Specification.....	66
Maintenance Safety.....	41	Servicing the Hydraulic System	67
Accessing the Machine.....	41	Storage	69
Accessing the Hydraulic Pump	42	Storing the Battery	69
Lubrication	43	Preparing the Machine.....	69
Greasing the Bearings and Bushings.....	43	Preparing the Engine	69
Engine Maintenance	45		

Safety

You can find additional safety information where needed throughout this *Operator's Manual*.

Improper use or maintenance by the operator or owner can result in injury. To reduce the potential for injury, comply with these safety instructions and always pay attention to the safety-alert symbol, which means Caution, Warning, or Danger—personal safety instruction. Failure to comply with the instruction may result in personal injury or death.

This machine has been designed in accordance with EN ISO 5395:2013 when equipped with the proper CE kit (refer to the Declaration of Conformity) and rear weight; refer to step [11 Installing the Rear Weights \(page 19\)](#).

This machine has been designed in accordance with ANSI B71.4-2017, when equipped with the proper rear weight; refer to step [11 Installing the Rear Weights \(page 19\)](#).

General Safety

This product is capable of amputating hands and feet and of throwing objects. Always follow all safety instructions to avoid serious personal injury.

Using this product for purposes other than its intended use could prove dangerous to you and bystanders.

- Read and understand the contents of this *Operator's Manual* before starting the engine.
- Use your full attention while operating the machine. Do not engage in any activity that causes distractions; otherwise, injury or property damage may occur.
- Do not put your hands or feet near moving components of the machine.
- Do not operate the machine without all guards and other safety protective devices in place and working on the machine.
- Keep clear of any discharge opening. Keep bystanders and pets a safe distance away from the machine.
- Keep children out of the operating area. Never allow children to operate the machine.
- Stop the machine, shut off the engine, remove the key, and wait for all moving parts to stop before servicing, fueling, or unclogging the machine.

Improperly using or maintaining this machine can result in injury. To reduce the potential for injury, comply with these safety instructions and always pay attention to the safety-alert symbol, which means Caution, Warning, or Danger—personal safety instruction. Failure to comply with these instructions may result in personal injury or death.

Safety and Instructional Decals



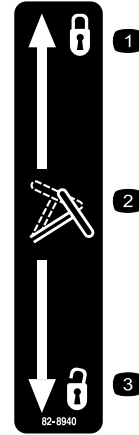
Safety decals and instructions are easily visible to the operator and are located near any area of potential danger. Replace any decal that is damaged or missing.



Battery Symbols

Some or all of these symbols are on your battery.

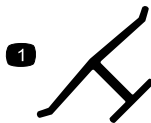
- | | |
|--|---|
| 1. Explosion hazard | 6. Keep bystanders a safe distance away from the battery. |
| 2. No fire, open flames, or smoking | 7. Wear eye protection; explosive gases can cause blindness and other injuries. |
| 3. Caustic liquid/chemical burn hazard | 8. Battery acid can cause blindness or severe burns. |
| 4. Wear eye protection. | 9. Flush eyes immediately with water and get medical help fast. |
| 5. Read the <i>Operator's Manual</i> . | 10. Contains lead; do not discard. |



82-8940

decal82-8940

- | | |
|------------------|-------------|
| 1. Locked | 3. Unlocked |
| 2. Tilt steering | |



decaloemmark

Manufacturer's Mark

- Indicates the blade is identified as a part from the original machine manufacturer.



92-1582

decal92-1582



decal93-6686

93-6686

1. Hydraulic fluid
2. Read the *Operator's Manual*.

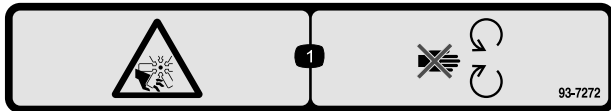


decal93-6697

93-6697

(Model 30345)

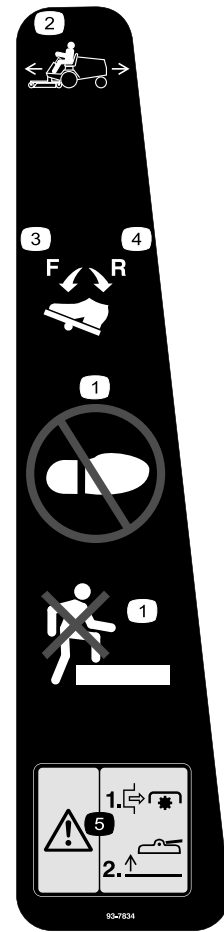
1. Read the *Operator's Manual*.
2. Add SAE 80w-90 (API GL-5) oil every 50 hours.



decal93-7272

93-7272

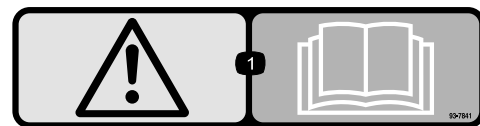
1. Cutting/dismemberment hazard; fan—stay away from moving parts.



decal93-7834

93-7834

1. No step
2. Traction pedal
3. Traction—forward
4. Traction—reverse
5. Warning—shut off PTO prior to raising decks; do not operate decks when they are in raised position



decal93-7841

93-7841

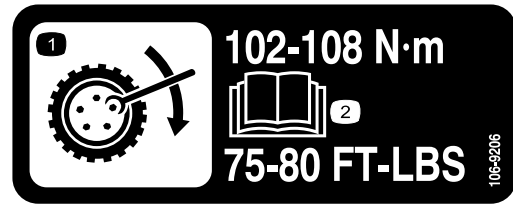
1. Warning—read the *Operator's Manual*.



105-2511

decal105-2511

1. Read *Operator's Manual* for starting instructions.



106-9206

decal106-9206

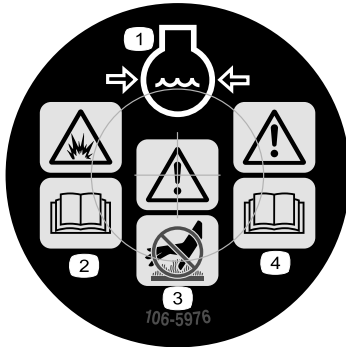
1. Wheel torque specifications
2. Read the *Operator's Manual*.



105-7179

decal105-7179

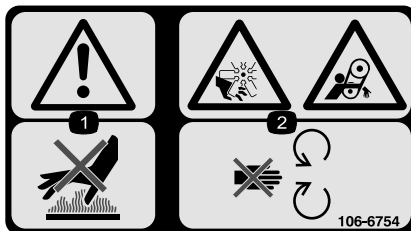
1. Read the *Operator's Manual*.
2. Parking brake



106-5976

decal106-5976

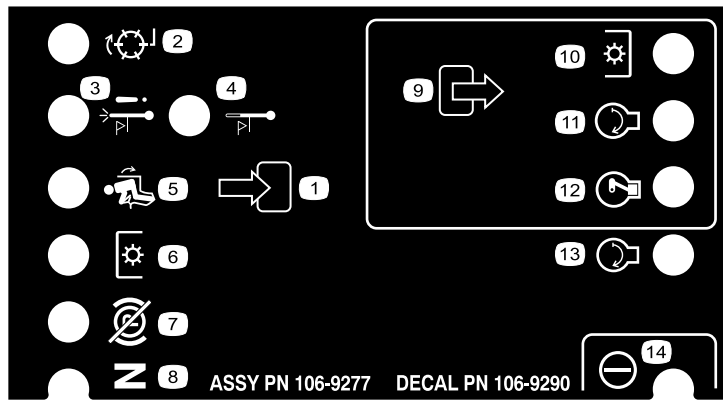
1. Engine coolant under pressure
2. Explosion hazard—read the *Operator's Manual*.
3. Warning—do not touch the hot surface.
4. Warning—read the *Operator's Manual*.



106-6754

decal106-6754

1. Warning—do not touch the hot surface.
2. Cutting/dismemberment hazard, fan and entanglement hazard, belt—stay away from moving parts.



decal106-9290

106-9290

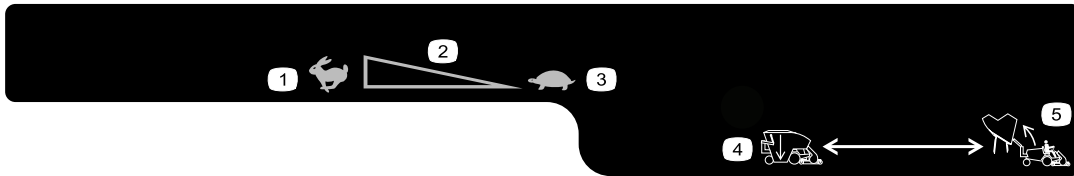
- | | | | |
|------------------------------|------------------------|---------------------------|-----------|
| 1. Inputs | 5. In seat | 9. Outputs | 13. Start |
| 2. Not active | 6. Power Takeoff (PTO) | 10. Power Takeoff (PTO) | 14. Power |
| 3. High temperature shutdown | 7. Parking brake off | 11. Start | |
| 4. High temperature warning | 8. Neutral | 12. Energize to run (ETR) | |



decal108-2073

108-2073

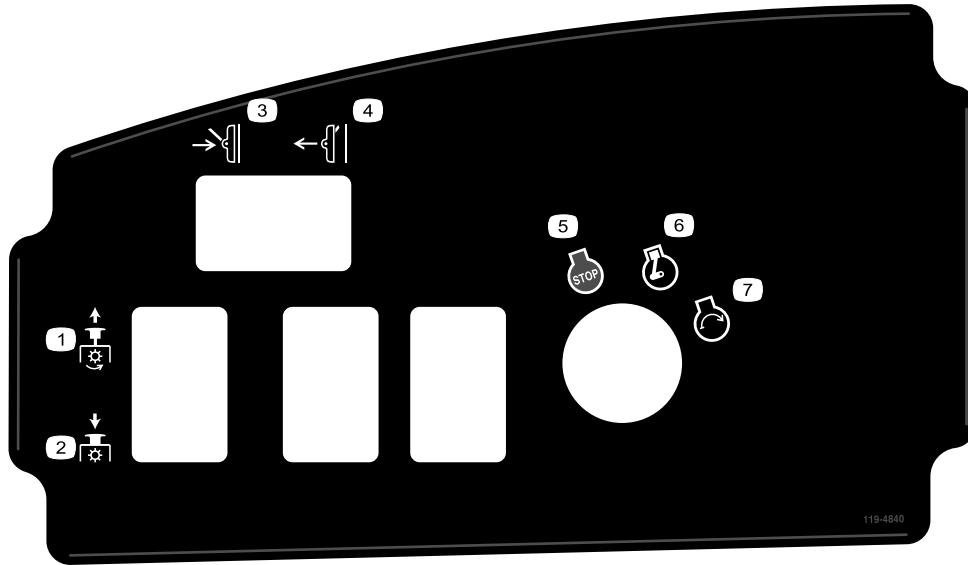
1. Warning—there is no rollover protection when the roll bar is down.
2. To avoid injury or death from a rollover accident, keep the roll bar in the raised and locked position and wear the seat belt. Lower the roll bar only when absolutely necessary; do not wear the seat belt when the roll bar is down.
3. Read the *Operator's Manual*; drive slowly and carefully.



decal119-4832

119-4832

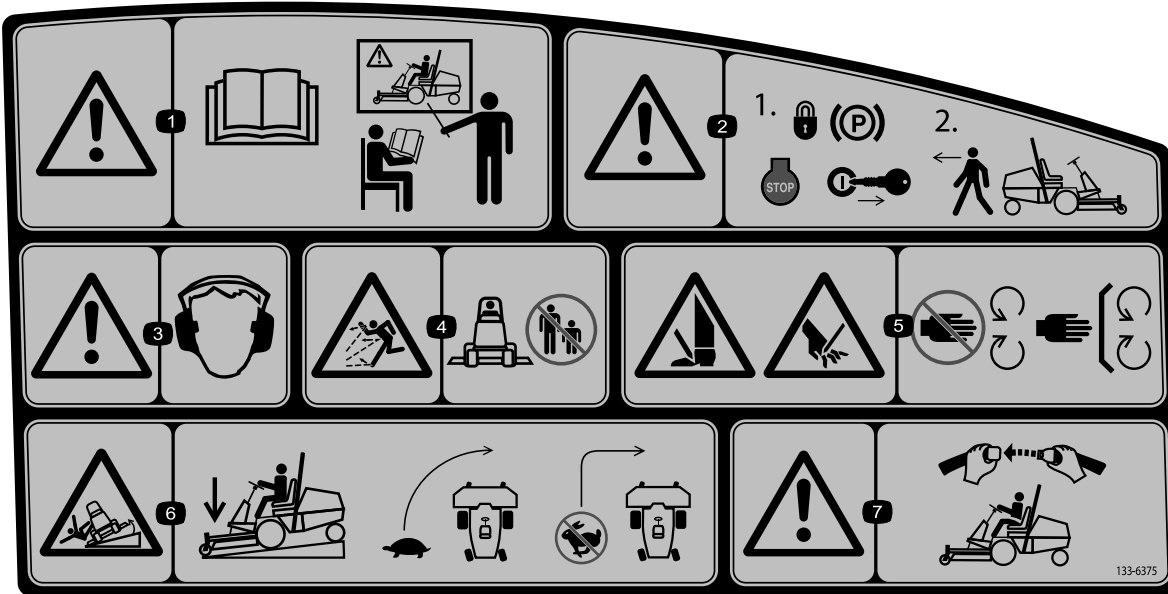
- | | | |
|--------------------------------|---------------------|---------------------|
| 1. Fast | 3. Slow | 5. Raise the hopper |
| 2. Continuous variable setting | 4. Lower the hopper | |



decal119-4840

119-4840

- | | | | |
|------------|---------------|----------------|-----------------|
| 1. PTO—On | 3. Lower deck | 5. Engine—stop | 7. Engine—start |
| 2. PTO—Off | 4. Raise deck | 6. Engine—run | |



decal133-6375

133-6375

1. Warning—read the *Operator's Manual*, all operators should be trained before operating the machine.
2. Warning—engage the parking brake, and remove the ignition key before leaving the machine.
3. Warning—hearing protection must be worn.
4. Thrown object hazard—keep bystanders a safe distance away from the machine and keep the deflector in place.
5. Cutting/dismemberment hazard of hands or feet, mower blade—stay away from moving parts.
6. Tipping hazard—when driving down slopes, lower the cutting unit, slow machine before turning, and do not turn at high speeds.
7. Warning—if the roll bar is installed, wear the seat belt.

CHECK/SERVICE

1. OIL LEVELS (ENGINE /TRANS.)
2. COOLANT LEVEL
3. TIRE PRESSURE
4. BELTS (FAN & PTO)
5. FUEL - DIESEL ONLY
6. BATTERY
7. GREASE, LUBE POINTS
8. RADIATOR SCREEN
9. AIR CLEANER
10. ELECTRIC CLUTCH GAP .015-.030
11. PTO BELT TENSION
12. WATER SEPARATOR
13. FUEL FILTER

GM 3280-D QUICK REFERENCE AID

FLUID SPECIFICATIONS
*See operator's manual for initial changes.

	CAPACITY	*CHANGE INTERVALS
ENGINE OIL	3.9 QT. WITH FILTER	OIL & FILTER 150 HRS.
TRANS OIL	6 QT.	FILTER 200 HRS.
FUEL	12.8 GAL.	FILTER 400 HRS.
COOLANT	8 QT.	1500 HRS.

FILTERS PART NO.

A. AIR 108-3810

B. FUEL 98-7612

C. FUEL 98-9764

D. TRANS. OIL 54-0110

E. ENGINE OIL 108-3841

133-6377

decal133-6377

133-6377

⚠️ WARNING: This product can expose you to chemicals including diesel engine exhaust, which is known to the State of California to cause cancer, and carbon monoxide, which is known to the State of California to cause birth defects or other reproductive harm. For more information go to www.P65Warnings.ca.gov. For more information, please visit www.toro.com/CAProp65.

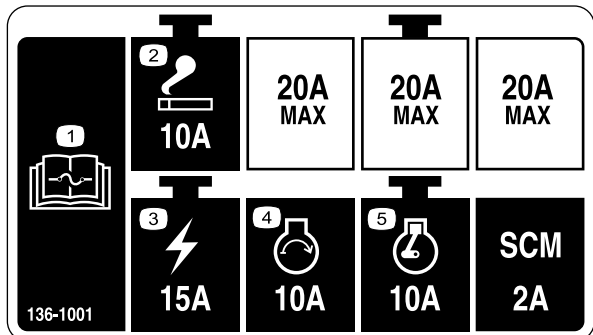
CALIFORNIA SPARK ARRESTER WARNING

Operation of this equipment may create sparks that can start fires around dry vegetation. A spark arrester may be required. The operator should contact local fire agencies for laws or regulations relating to fire prevention requirements.

133-5618

decal133-5618

133-5618



decal136-1001

136-1001

- | | |
|--|-----------------|
| 1. Read the <i>Operator's Manual</i> for information on fuses. | 4. Engine—start |
| 2. Lighter | 5. Engine—run |
| 3. Ignition | |

Setup

Loose Parts

Use the chart below to verify that all parts have been shipped.

Procedure	Description	Qty.	Use
1	Steering wheel	1	Install the steering wheel.
	Cover	1	
2	Handle	1	Install the hood handle.
	Screws	2	
3	Seat—Model 30398 (optional kit)	1	Install the seat.
	Mechanical Seat Suspension Kit—Model 30312 (optional kit) or Pneumatic Seat Suspension Kit—Model 30313 (optional kit)	1	
4	Seat belt	1	Install the seat belt.
	Bolts (7/16 x 1 inch)	2	
	Lock washer (7/16 inch)	2	
	Flat washer (7/16 inch)	2	
5	Manual tube	1	Install the manual tube.
	R-clamp	2	
6	No parts required	–	Adjust the roll bar.
7	No parts required	–	Activate and charge the battery.
8	No parts required	–	Check the fluid levels.
9	No parts required	–	Check the air pressure in the tires.
10	No parts required	–	Adjust the weight transfer pressure.
11	Rear weight kit(s)—as needed	-	Install the rear weights.
12	Roll pin	1	Use the hardware for attachments.
	Bolt (5/16 x 1-3/4 inches)	2	
	Locknut (5/16 inch)	2	
	Cylinder pin	2	
	Cotter pin (3/16 x 1-1/2 inches)	4	
	Brake-return springs	2	

Media and Additional Parts

Description	Qty.	Use
Operator's Manual	1	Review before operating the machine.
Engine owner's manual	1	Use to reference engine information.
Declaration of Conformity	1	

▲ WARNING

The PTO universal shaft is attached to the machine frame. Do not operate the PTO without first removing the universal shaft or coupling it to a suitable implement.

Note: Determine the left and right sides of the machine from the normal operating position.

1

Installing the Steering Wheel

Parts needed for this procedure:

1	Steering wheel
1	Cover

Procedure

1. Remove the steering wheel from the shipping skid (Figure 3).

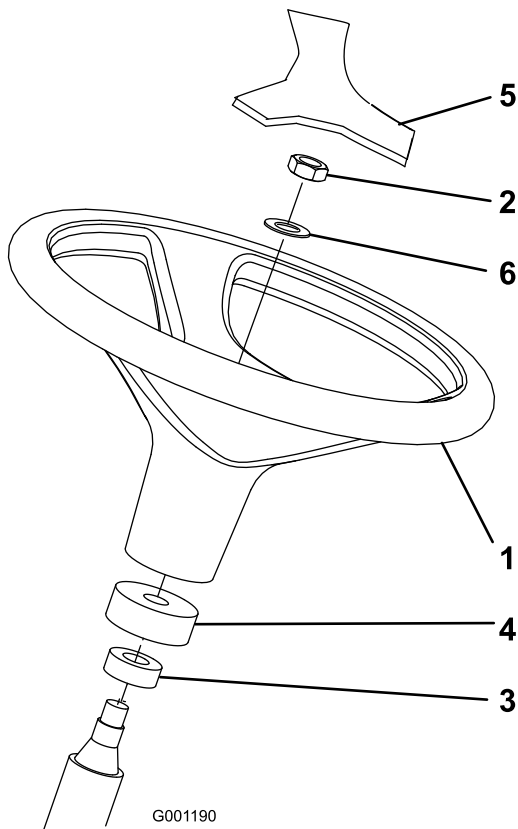


Figure 3

- | | |
|-------------------|----------------|
| 1. Steering wheel | 4. Foam collar |
| 2. Jam nut | 5. Cover |
| 3. Dust cover | 6. Washer |

2. Remove the jam nut and washer from the steering shaft.

Note: Ensure that the foam collar and dust cover remain on the steering shaft (Figure 3).

3. Slide the steering wheel and washer onto the steering shaft (Figure 3).
4. Secure the steering wheel to the shaft with the jam nut. Tighten the jam nut to 27-35 N·m (20-26 ft-lb).
5. Mount the cover to the steering wheel (Figure 3).

2

Installing the Hood Handle

Parts needed for this procedure:

1	Handle
2	Screws

Procedure

1. Remove and discard the 2 screws and nuts securing the hood cable bracket and to the underside of the hood (Figure 4).

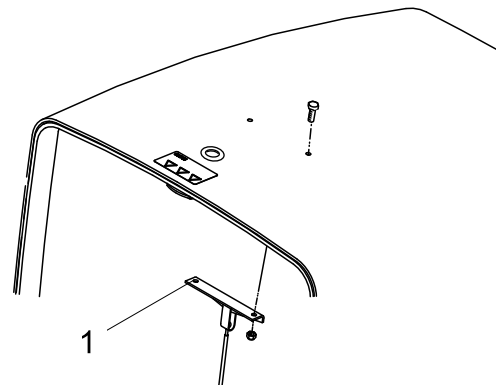


Figure 4

1. Hood cable bracket
2. Mount the handle and the cable bracket to the hood with 2 screws (Figure 5).

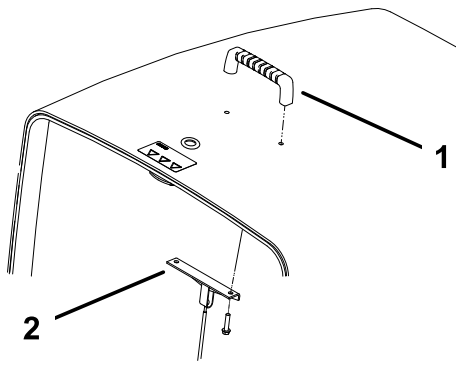


Figure 5

g198430

1. Handle 2. Hood-cable bracket

4

Installing the Seat Belt

Parts needed for this procedure:

1	Seat belt
2	Bolts (7/16 x 1 inch)
2	Lock washer (7/16 inch)
2	Flat washer (7/16 inch)

Procedure

Note: You must mount the latch of the belt to the right side of the seat.

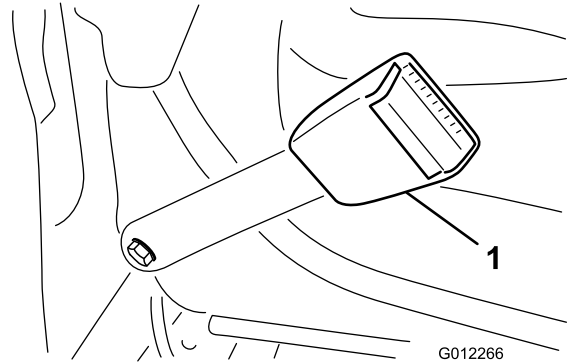


Figure 6

G012266

g012266

1. Seat-belt latch

1. Assemble the end of each seat-belt latch to the holes in the back of the seat with 2 bolts (7/16 x 1 inch), flat washers (7/16 inch), and lock washers (7/16 inch) (Figure 6).
2. Torque the bolts to 61 to 75 N·m (45 to 55 ft-lb).

5

Installing the Manual Tube

Parts needed for this procedure:

1	Manual tube
2	R-clamp

Procedure

1. Remove the manual tube and R-clamps secured to the seat plate.

3

Installing the Seat

Parts needed for this procedure:

1	Seat—Model 30398 (optional kit)
1	Mechanical Seat Suspension Kit—Model 30312 (optional kit) or Pneumatic Seat Suspension Kit—Model 30313 (optional kit)

Procedure

The Groundsmaster 3280-D machine comes without the seat assembly. Obtain and install the optional seat (Model No. 30398) and the Mechanical Seat Suspension Kit (Model 30312) or the Pneumatic Seat Suspension Kit (Model 30313). Refer to the seat kit for the installation instructions.

Note: Refer to [5 Installing the Manual Tube \(page 14\)](#) before mounting the seat to the seat suspension.

Note: Discard the 2 mounting bolts and flat washers.

2. Remove the 2 nuts and vinyl caps (if previously installed) securing the upper seat bracket to the left side of the seat suspension (Figure 7).
3. Loosely mount the R-clamps to the seat bracket studs with the 2 nuts previously removed (Figure 7).

Note: Position the R-clamps under the seat-suspension tabs.

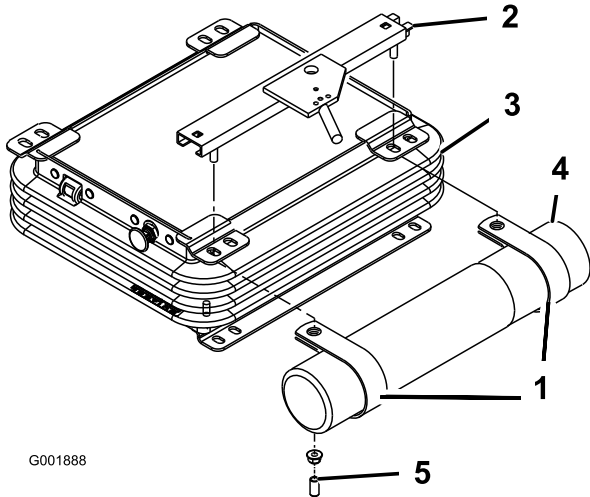


Figure 7

1. R-clamps
2. Upper seat bracket
3. Seat suspension
4. Manual tube
5. Vinyl cap

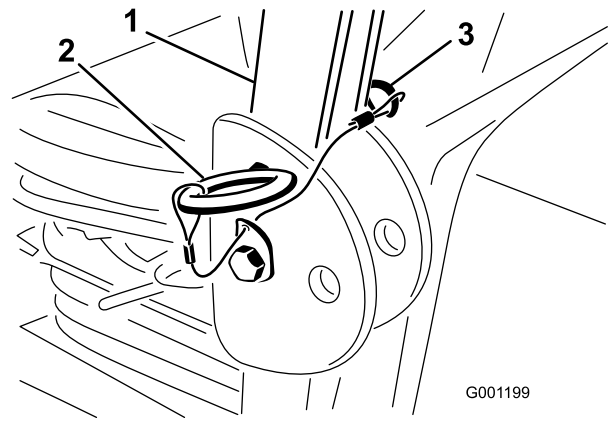


Figure 8

1. Roll bar
2. Pin
3. Hairpin cotter

2. Raise the roll bar to the upright position and install the 2 pins and secure them with the hairpin cotter pins (Figure 8).

Note: The roll bar is an effective safety device. Keep the roll bar in the raised and locked position. Lower the roll bar temporarily only when absolutely necessary.

Important: Do not wear the seat belt when the roll bar is in the down position.

7

Activating and Charging the Battery

No Parts Required

Adding Electrolyte to the Battery

⚠ WARNING

Battery electrolyte contains sulfuric acid, which is lethal if consumed and causes severe burns.

- Do not drink electrolyte and avoid contact with skin, eyes, or clothing. Wear eye protection to shield your eyes and rubber gloves to protect your hands.
- Fill the battery where clean water is always available for flushing the skin.

Important: Use only electrolyte with a specific gravity of 1.265 to initially fill battery.

1. Remove the battery from the machine.

6

Adjusting the Roll Bar

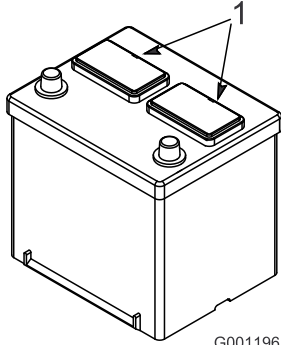
No Parts Required

Procedure

1. Remove the hairpin cotter pins and remove the 2 pins from the roll bar (Figure 8).

Important: Do not add electrolyte while the battery is in the machine. You could spill it, causing corrosion.

2. Clean the top of the battery and remove the vent caps (Figure 9).



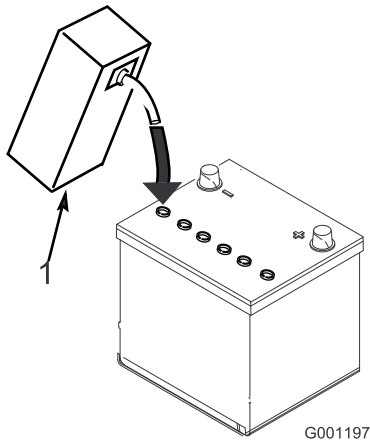
G001196

g001196

Figure 9

1. Vent caps

3. Carefully fill each cell with electrolyte until the plates are covered with about 6 mm (1/4 inch) of fluid (Figure 10).



G001197

g001197

Figure 10

1. Electrolyte

4. Allow approximately 20 to 30 minutes for the electrolyte to soak into the plates.

Note: Refill as necessary to bring the electrolyte to within about 6 mm (1/4 inch) of the bottom of the fill well (Figure 10).

⚠ WARNING

Charging the battery produces gasses that can explode.

Never smoke near the battery and keep sparks and flames away from battery.

Charging the Battery

1. Connect a 3 to 4 A battery charger to the battery posts. Charge the battery at a rate of 3 to 4 amps until the specific gravity of the electrolyte is 1.250 or higher and the temperature of the battery is at least 16°C (60°F), with all cells freely discharging gas.
2. When the battery is charged, disconnect the charger from the electrical outlet and then disconnect the charger from the battery posts.

Note: Incomplete charging may result in gassing of the battery and the overflow of battery acid, causing corrosive damage to the machine.

WARNING

CALIFORNIA Proposition 65 Warning

Battery posts, terminals, and related accessories contain lead and lead compounds, chemicals known to the State of California to cause cancer and reproductive harm. Wash hands after handling.

Installing the Battery to the Machine

⚠ WARNING

Battery terminals or metal tools could short against metal tractor components causing sparks. Sparks can cause the battery gasses to explode, resulting in personal injury.

- When removing or installing the battery, do not allow the battery terminals to touch any metal parts of the tractor.
- Do not allow metal tools to short between the battery terminals and metal parts of the tractor.

1. Install the battery into the machine.
2. Install the positive-battery cable (red) to the positive (+) terminal, and slide the rubber boot over the positive terminal (Figure 11).

⚠ WARNING

Incorrect battery cable routing could damage the machine and cables, causing sparks. Sparks can cause the battery gasses to explode, resulting in personal injury.

- Connect the cables to the correct battery post.
- Always disconnect the negative (black) battery cable before disconnecting the positive (red) cable.
- Always connect the positive (red) battery cable before connecting the negative (black) cable.

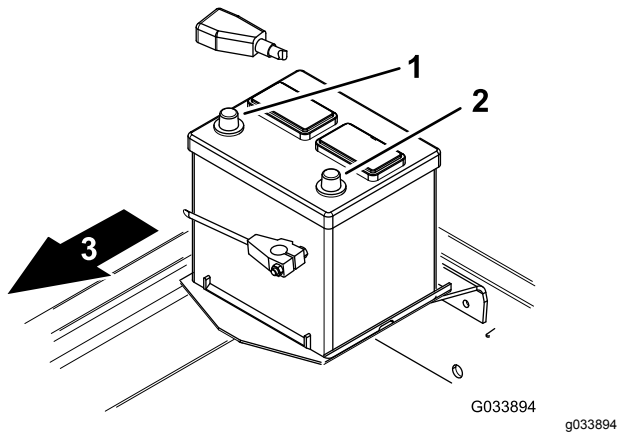


Figure 11

1. Positive (+)
2. Negative (-)
3. Front of the machine

Note: Ensure that the battery cables are routed away from any sharp edges or moving parts.

3. Install the negative-battery cable (black) to the negative (-) terminal of the battery (Figure 11).

8

Checking the Fluid Levels

No Parts Required

Procedure

- Check the engine-oil level before and after the engine is first started; refer to [Checking the Engine-Oil Level \(page 46\)](#).

- Check the level of the rear-axle lubricant (4-wheel drive machines only) before the engine is first started; refer to [Maintaining the Rear Axle \(page 54\)](#).
- Check the level of the bidirectional clutch lubricant (4-wheel drive machines only) before the engine is first started; refer to [Maintaining the Bidirectional Clutch \(page 55\)](#).
- Check the coolant level before the engine is first started; refer to [Checking the Cooling System and Coolant Level \(page 60\)](#).
- Check the level of the hydraulic fluid before the engine is first started; refer to [Checking the Hydraulic System and Fluid Level \(page 67\)](#).

9

Checking the Air Pressure in the Tires

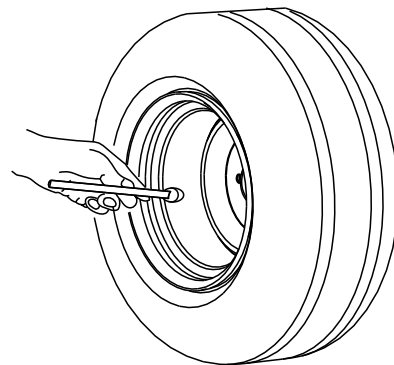
No Parts Required

Procedure

Tire air pressure specification (front and rear tires): 138 kPa (20 psi).

Check the air pressure in the front and rear tires before the engine is first started.

Note: The tires are overinflated for shipping; therefore, you must reduce the air pressure in the tires.



G001055

Figure 12

g001055

10

Adjusting the Weight Transfer of the Mower Deck

No Parts Required

Procedure

You can change the hydraulic pressure used to transfer the weight of the mower deck to the traction unit by adjusting weight-transfer valve of the lift manifold. For best cutting performance, adjust the weight-transfer valve so that any bouncing motion of the mower deck is minimal over uneven turf, but also adjust the weight-transfer valve so that the mower deck does not ride heavily over flat terrain.

- To improve the contour-tracking performance of the cutting deck as you operate the machine over uneven turf, **decrease** the weight-transfer (hydraulic) pressure at the lift manifold.

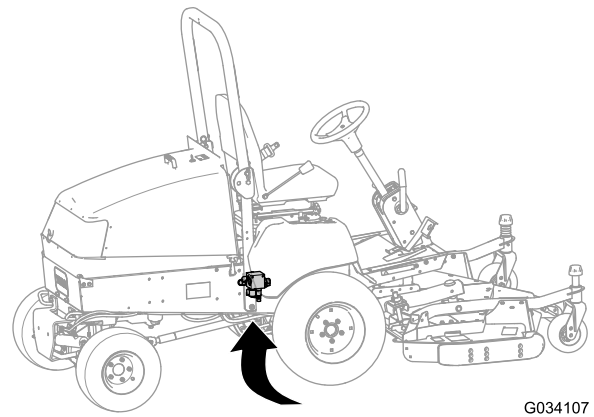
Note: If the casters of the mower deck float above the ground, the hydraulic pressure of the weight transfer valve is set at too high.

- When you are cutting flat turf, when the cutting deck is scalping the grass, or if the quality of cut is uneven from side to side, **increase** the weight-transfer pressure at the lift manifold.

Note: Increasing weight-transfer pressure also transfers the weight from the casters of the cutting deck to the wheels of the traction unit, thereby improving the traction of the traction unit.

Adjust the weight-transfer pressure as follows:

- Park the machine on a level surface, engage the parking brake, lower the cutting deck, shut off the engine, and remove the key from the key switch.
- Locate the lift manifold from under the machine, inboard the right frame channel, behind the front axle (Figure 13).

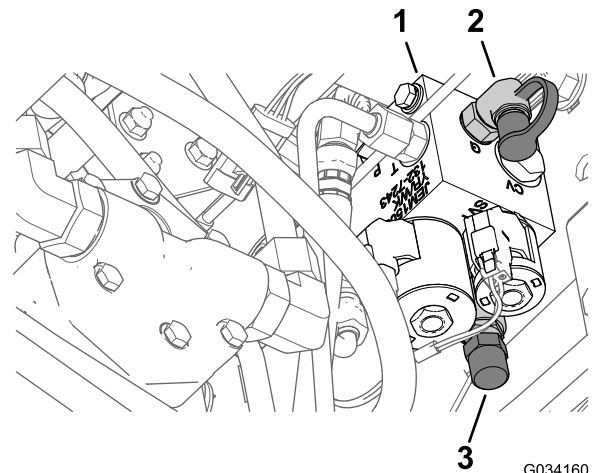


G034107

g034107

Figure 13

- Connect a pressure gauge to the test port at the rear of the lift manifold (Figure 14).



G034160

g035498

Figure 14

- Lift manifold
- Test port
- Remove the cap from the weight-transfer spool

- At the front of the lift manifold, remove the cap from the weight-transfer spool (Figure 14).
- Loosen the jam nut at the bottom of the weight-transfer spool (Figure 14).
- Start the engine and set the throttle to HIGH IDLE.
- Use a hex-socket wrench to adjust the lift valve of the weight-transfer spool until the desired pressure is measured on the gauge; refer to the chart that follows for the recommended pressure setting for the cutting deck..
 - Rotate the adjusting screw clockwise to increase the pressure.
 - Rotate the adjusting screw counterclockwise to decrease the pressure.

Cutting Deck	Weight-Transfere Pressure
52 inch Side Discharge Deck (Model 30555)	827 kPa (120 psi)
60 inch Side Discharge Deck (Model 30366) or 62 in Base Deck (Model 30403) or 62 in Side Discharge Deck (Model 30551)	1620 kPa (235 psi)
72 inch Side Discharge Deck (Model 31336) or 72 in Base Deck (Model 30404) or 72 in Guardian Recycler Deck (Model 31335)	1930 kPa (280 psi)

8. Shut off the engine.
9. Tighten the jam nut at the bottom of the weight-transfer spool, and torque the nut to 13-16 N·m (10-12 ft-lb).
10. Remove the pressure gauge from the test port.

11

Installing the Rear Weights

Parts needed for this procedure:

-	Rear weight kit(s)—as needed
---	------------------------------

Procedure

This machine alone complies with EN ISO 5395:2013 and ANSI B71.4-2012 standard when equipped with factory installed rear weight—98 kg (215 lb) on Model 30344 (2WD machines) and 23 kg (50 lb) on Model 30345 (4WD machines). Use Table 1 to determine the additional weight required to maintain compliance when the machines are equipped with the listed attachments. Order parts from your authorized Toro distributor.

Note: Before installing any third-party kits, contact your authorized Toro distributor.

Weight Table 1—(rear weights required for machines with 98 kg (215 lb) of factory-installed rear weight and machines with 23 kg (50 lb) of factory-installed rear weight)

Attachments	Additional Rear Weight Required	Left Side Weight Required	Weight Part Number	Weight Description	Qty.
52 inch Side Discharge Deck	0 kg (0 lb)	0 kg (0 lb)	-	-	-
52 inch Side Discharge Deck with 15 cu. ft. Hopper	0 kg (0 lb)	66 kg (145 lb)*	*77-6700	34 kg (75 lb) Wheel Weight	1
			92-9670	Bracket Kit	1
			24-5780	Rear Weight Kit	1
60 inch Side Discharge Deck or 62 inch Base Deck with Rear Discharge Kit or 62 inch Side Discharge Deck	16 kg (35 lb)**	0 kg (0 lb)	24-5790	Rear Weight, 16 kg (35 lb)	1
			60-9870	Bolt (1/2 x 4-1/2 inches)	2
			3253-7	Lock washer (1/2 inch)	2
			3217-9	Nut (1/2 inch)	2
60 inch Side Discharge Deck with 15 cu. ft. Hopper	16 kg (35 lb)	34 kg (75 lb)*	*77-6700	34 kg (75 lb) Wheel Weight	1
			24-5790	Rear Weight, 16 kg (35 lb)	1
			60-9870	Bolt (1/2 x 4-1/2 inches)	2
			3253-7	Lock washer (1/2 inch)	2
			3217-9	Nut (1/2 inch)	2
62 inch Side Discharge Deck with 15 cu. ft. Hopper	0 kg (0 lb)	39 kg (85 lb)	132-8149	23 kg (50 lb) Wheel Weight (add both weights to left front wheel)	1
			325-18	Bolt (for wheel weights)	4
			92-9670	Bracket Kit	1
			24-5790	Rear Weight, 16 kg (35 lb)	1
			60-9870	Bolt (1/2 x 2-1/4 inches)	2
			3253-7	Lock washer (1/2 inch)	2
			3217-9	Nut (1/2 inch)	2
			24-5780	Rear Weight Kit	1
72 inch (4 casters) Side Discharge Deck 72 inch Base Deck with Rear Discharge Kit or Guardian Kit or 72 inch (4 casters) Guardian Recycler Deck	32 kg (70 lb)	0 kg (0 lb)	24-5780	Rear Weight Kit	1
			24-5780	Rear Weight Kit	1
			24-5780	Rear Weight Kit	1
Pro Force Blower with Adapter Kit—Not CE compliant	95 kg (210 lb)	0 kg (0 lb)	24-5780	Rear Weight Kit	3
Winter Cab and Toro V-plow	64 kg (140 lb)	0 kg (0 lb)	24-5780	Rear Weight Kit	2
Winter Cab and ***Erskine Snowthrower	111 kg (245 lb)	0 kg (0 lb)	24-5790	Rear Weight, 16 kg (35 lb)	1
			24-5780	Rear Weight Kit	3
			60-9870	Bolt (1/2 x 2-1/4 inches)	2
			3253-7	Lock washer (1/2 inch)	2
			3217-9	Nut (1/2 inch)	2
Winter Cab and ***MB Rotary Broom	175 kg (385 lb)	0 kg (0 lb)	24-5790	Rear Weight, 16 kg (35 lb)	1
			24-5780	Rear Weight Kit	5
			60-9870	Bolt (1/2 x 2-1/4 inches)	2
			3253-7	Lock washer (1/2 inch)	2
			3217-9	Nut (1/2 inch)	2

*Requires a 34 kg (75 lb) wheel weight on the left wheel—included with the 0.4 m³(15 ft³) hopper

***Third party attachment—complies with ANSI B71.3-2005

**Requires a 16 kg (35 lb) rear weight when the universal sunshade is attached to the machine

12

Using the Hardware for Attachments

Parts needed for this procedure:

1	Roll pin
2	Bolt (5/16 x 1-3/4 inches)
2	Locknut (5/16 inch)
2	Cylinder pin
4	Cotter pin (3/16 x 1-1/2 inches)
2	Brake-return springs

Procedure

1. Save the roll pin, bolts (5/16 x 1-3/4 inches), and locknuts (5/16 inch) to secure the universal shaft to an implement.
2. Save the cylinder pin and cotter pin (3/16 x 1-1/2 inches) to secure the deck lift arms to the lift cylinder.
3. Save the brake return springs to mount the deck lift arms.

Product Overview

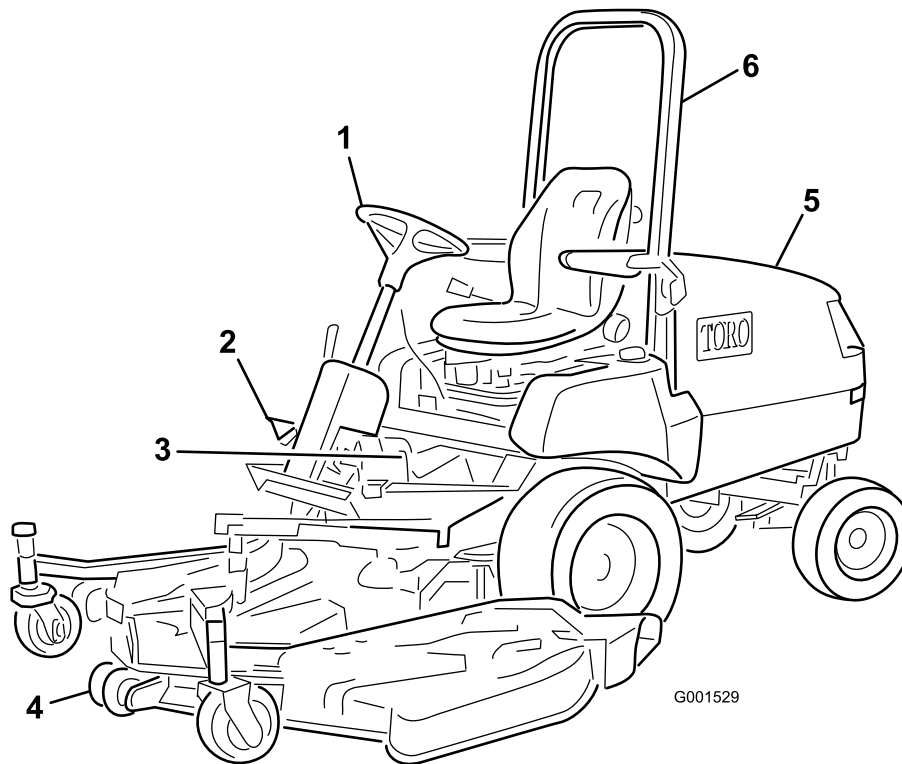


Figure 15

g001529

- | | | |
|-------------------|-----------------|----------------------------|
| 1. Steering wheel | 3. Brakes | 5. Hood/engine compartment |
| 2. Traction pedal | 4. Cutting unit | 6. Roll bar |

Controls

Traction Pedal

The traction pedal (Figure 16) makes the machine move forward and rearward. Using the heel and toe of the right foot, press the top of the pedal to move forward and the bottom of the pedal to move rearward. The ground speed is proportionate to how far you press the pedal. For maximum ground speed, you must fully press traction pedal while throttle is in the FAST position. The maximum speed forward is approximately 16 kph (10 mph). To get maximum power under heavy load or when ascending a hill, have the throttle in the FAST position while pressing traction pedal slightly to keep the engine speed (rpm) high. When the engine speed begins to decrease, release the traction pedal slightly to allow the engine speed to increase.

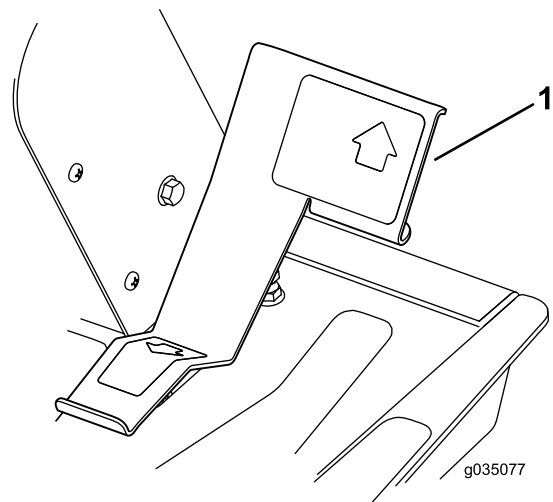


Figure 16

g035077

1. Traction pedal

Tilt-Steering Control

The tilt-steering control is a lever on the right side of the steering column (Figure 17). Pull the lever rearward to adjust the steering wheel to the desired

operating position and push the lever forward to lock the adjustment.

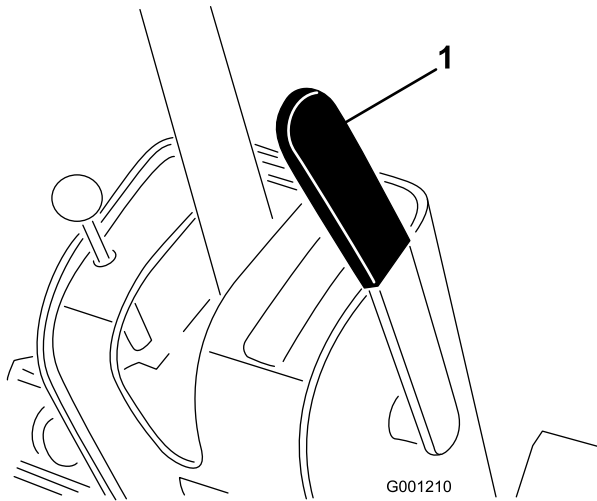


Figure 17

1. Tilt-steering control

⚠ CAUTION

Raising the deck can expose you to rotating blades, and contact with rotating blades can cause serious injury.

Never raise the deck while the blades are rotating.

Brakes

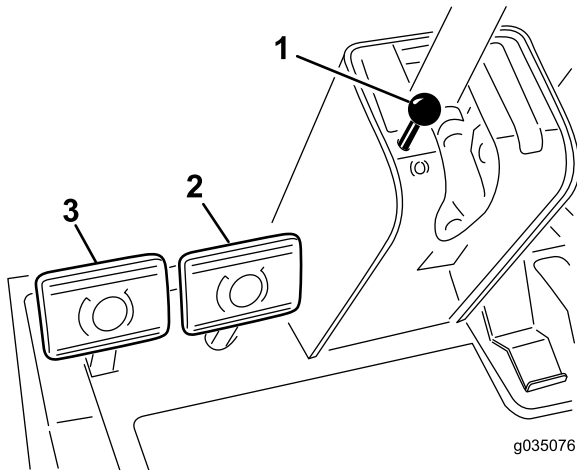


Figure 18

1. Parking-brake knob
2. Right-brake pedal
3. Left-brake pedal

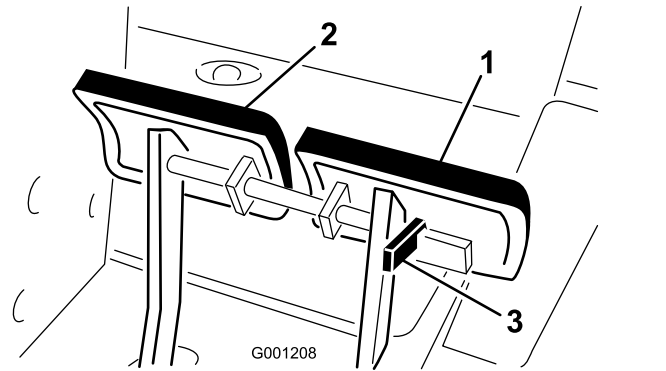


Figure 19

1. Left-brake pedal
2. Right-brake pedal
3. Lock arm

Service Brakes

The left and right brake pedals (Figure 18) are connected to the left and right front wheels. Since both brakes work independently of each other, you can use the brakes to turn sharply or to increase traction if 1 wheel tends to slip while operating on certain slope conditions. However, you can damage wet grass or soft turf whenever you use the brakes to turn sharply. To stop the machine quickly, press both brake pedals together. Always lock the brakes together when transporting the machine (Figure 19).

Parking Brake

Whenever you shut off the engine, engage the parking brake to prevent the machine from accidentally moving. To engage the parking brake, push the lock arm (Figure 19) on the left brake pedal so that it locks together with the right pedal. Then push down fully on both pedals, pull the parking brake knob out (Figure 18), and release the pedals. To release the parking brake, press both pedals until the parking-brake knob retracts. Before starting the engine, release the lock arm from the left brake pedal so that both pedals work independently with each front wheel.

Ignition Switch

The ignition switch has 3 positions: OFF, ON/PREHEAT, and START.

Lift Switch

The lift switch (Figure 20) raises and lowers the deck. Pressing the switch forward, into the DETENT position, lowers the deck and allows the deck to float. Pressing the switch backward raises the deck. Raise the deck whenever you transport the machine between locations. Lower the deck whenever you are not using the machine.

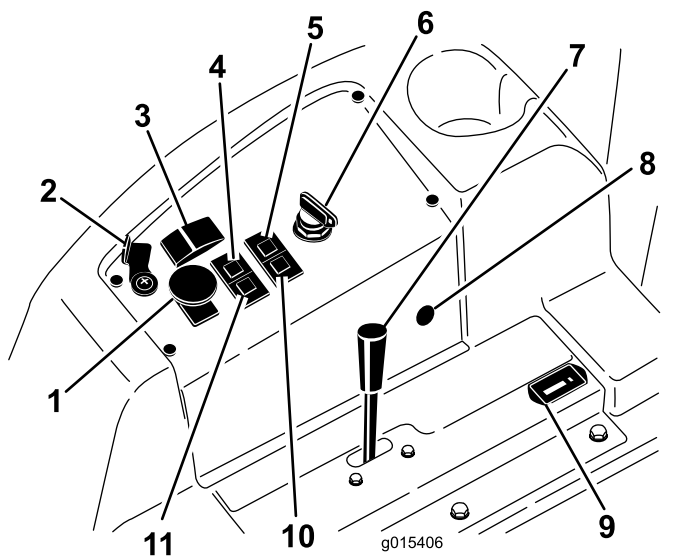


Figure 20

- | | |
|----------------------------------|-------------------------|
| 1. PTO switch | 7. Throttle lever |
| 2. Lift-lock lever (optional) | 8. 12 V power point |
| 3. Lift switch | 9. Hour meter |
| 4. Coolant-temperature indicator | 10. Glow-plug indicator |
| 5. Oil-pressure indicator | 11. Charge indicator |
| 6. Key switch | |

PTO Switch

Pull up the knob for the PTO switch to ON position to run the electric PTO clutch (Figure 20). Push down the knob to the OFF position to shut off the electric PTO clutch. The only time you should set the PTO switch to the ON position is when the PTO implement is in the operating position (down) and you are ready to begin operation.

Note: If you leave the operator's seat while the PTO switch is in the ON position, the machine will automatically shut off the engine; refer to [Resetting the PTO Function \(page 34\)](#).

Fuel Gauge

The fuel gauge (Figure 21) indicates the level of fuel remaining in the fuel tank.

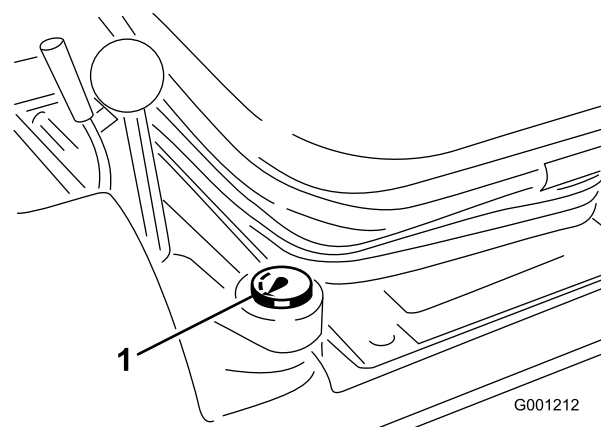


Figure 21

1. Fuel gauge

Throttle Lever

Use the throttle lever (Figure 20) to control the engine speed. Moving the throttle lever forward toward the FAST position increases the engine speed. Moving the throttle lever rearward toward the SLOW position decreases the engine speed. The throttle lever controls the speed of the blades and, in conjunction with traction pedal, controls ground speed of the machine. The detent is located at the HIGH-IDLE position.

Hour Meter

The hour meter (Figure 20) records and displays accumulated hours of engine operation.

Engine-Coolant-Temperature-Warning Light

When the coolant temperature rises above normal operating limit, the engine coolant temperature-warning light (Figure 20) illuminates and the machine stops the operation of the implement. If the coolant temperature rises another 7°C (20°F) after the temperature-warning light illuminates, the engine shuts off. Operate the engine at low idle to allow the coolant to return to the normal-operating range. If the warning light continues to illuminate, shut off the engine and determine the cause of the high coolant temperature.

Glow-Plug Indicator

When glow-plug indicator illuminates, the glow plugs are energized (Figure 20).

Charge Indicator

The charge indicator illuminates if electrical charging system is operating above or below the normal operating range (Figure 20). Check and/or repair the electrical charging system.

Oil-Pressure Warning Light

The oil-pressure warning light glows if the engine-oil pressure drops below a safe level (Figure 20). If the oil pressure is low, shut off the engine and determine the cause. Repair the engine-oil system before you start the engine again.

Lift-Lock Lever

Use the lift-lock lever to secure the lift switch (Figure 20), to the RAISE-DECK position, when performing maintenance on the deck or when transporting between mowing locations.

Specifications

Note: Specifications and design are subject to change without notice.

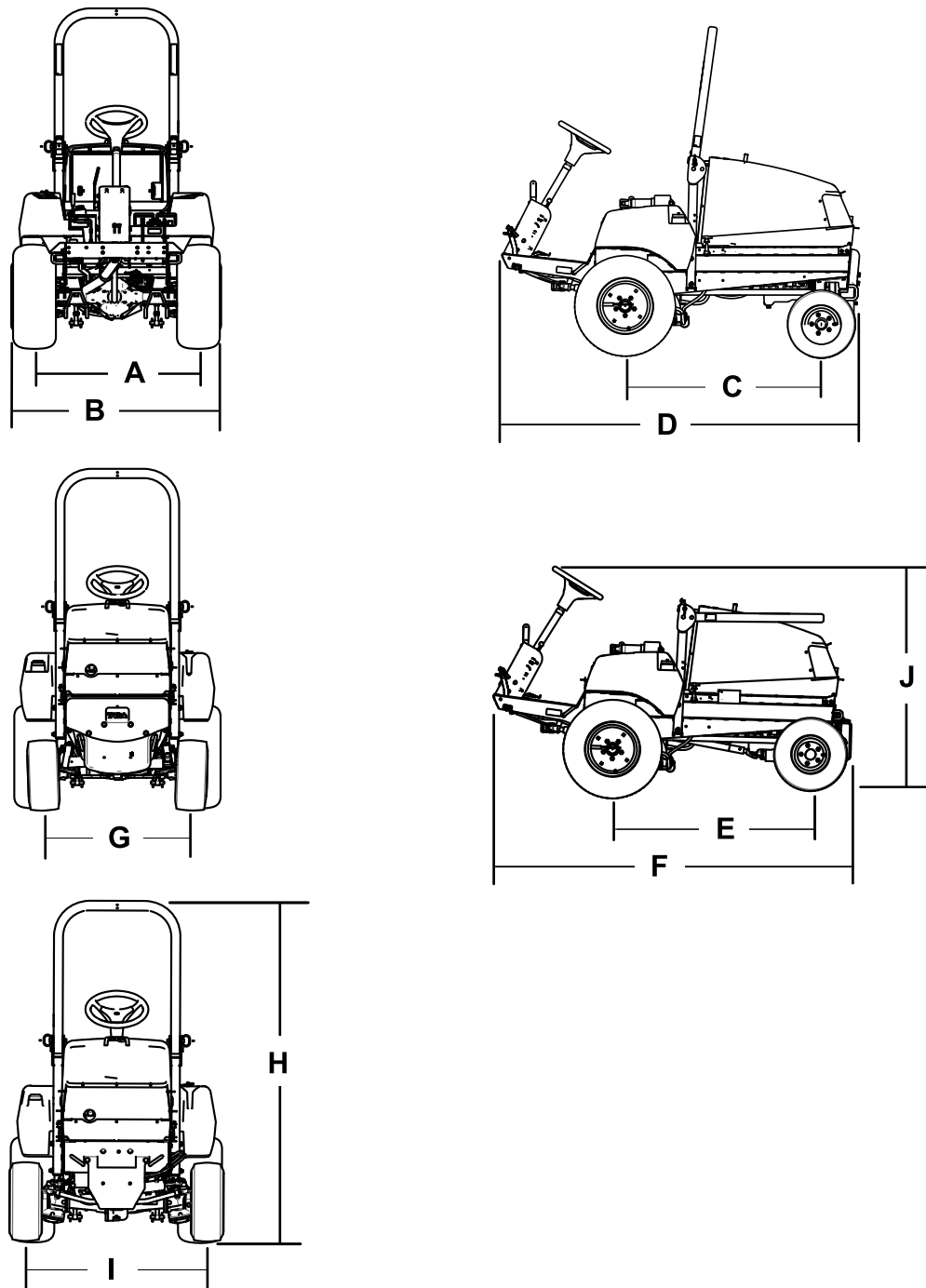


Figure 22

g197081

Description	Figure 22 reference	Dimension or Weight
Height with roll bar raised	H	237 cm (93-1/2 inches)
Height with roll bar lowered	J	127 cm (50 inches)
Overall length (2-wheel drive)	D	213 cm (84 inches)
Overall length (4-wheel drive)	F	218 cm (86 inches)
Overall width	B	121 cm (47-1/2 inches)
Wheel-base length (2-wheel drive)	C	117 cm (46 inches)

Wheel-base length (4-wheel drive)	E	119 cm (47 inches)
Front-wheel tread width	A	119 cm (47 inches)
Rear-wheel tread width		
	2-wheel drive	G
4-wheel drive	I	102 cm (40 inches)
Ground clearance		17 cm (6-1/2 inches)
Net Weight (2-wheel drive)		635 kg (1,400 lb)
Net Weight (4-wheel drive)		794 kg (1,751 lb)

Attachments/Accessories

A selection of Toro approved attachments and accessories is available for use with the machine to enhance and expand its capabilities. Contact your Authorized Service Dealer or authorized Toro distributor or go to www.Toro.com for a list of all approved attachments and accessories.

To ensure optimum performance and continued safety certification of the machine, use only genuine Toro replacement parts and accessories. Replacement parts and accessories made by other manufacturers could be dangerous, and such use could void the product warranty.

Operation

Before Operation

Before Operation Safety

General Safety

- Never allow children or untrained people to operate or service the machine. Local regulations may restrict the age of the operator. The owner is responsible for training all operators and mechanics.
- Become familiar with the safe operation of the equipment, operator controls, and safety signs.
- Know how to stop the machine and shut off the engine quickly.
- Check that operator-presence controls, safety switches, and shields are attached and functioning properly. Do not operate the machine unless they are functioning properly.
- Before mowing, always inspect the machine to ensure that the blades, blade bolts, and cutting assemblies are in good working condition. Replace worn or damaged blades and bolts in sets to preserve balance.
- Inspect the area where you will use the machine and remove all objects that the machine could throw.

Fuel Safety

- Use extreme care in handling fuel. It is flammable and its vapors are explosive.
- Extinguish all cigarettes, cigars, pipes, and other sources of ignition.
- Use only an approved fuel container.
- Do not remove the fuel cap or fill the fuel tank while the engine is running or hot.
- Do not add or drain fuel in an enclosed space.
- Do not store the machine or fuel container where there is an open flame, spark, or pilot light, such as on a water heater or other appliance.
- If you spill fuel, do not attempt to start the engine; avoid creating any source of ignition until the fuel vapors have dissipated.

Accessing the Machine

Opening the Hood

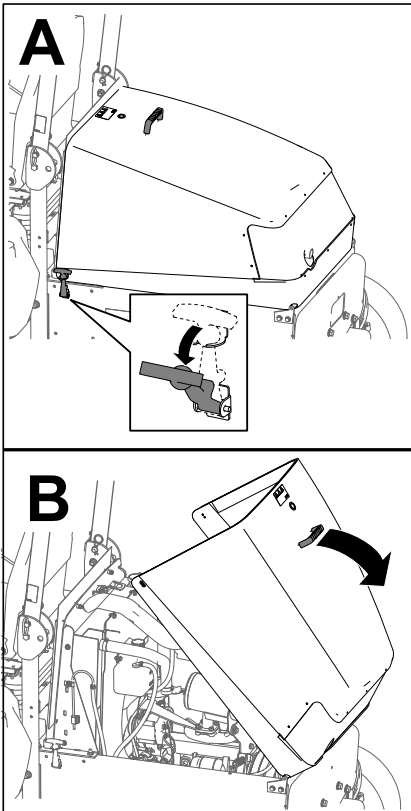


Figure 23

g198446

Closing the Hood

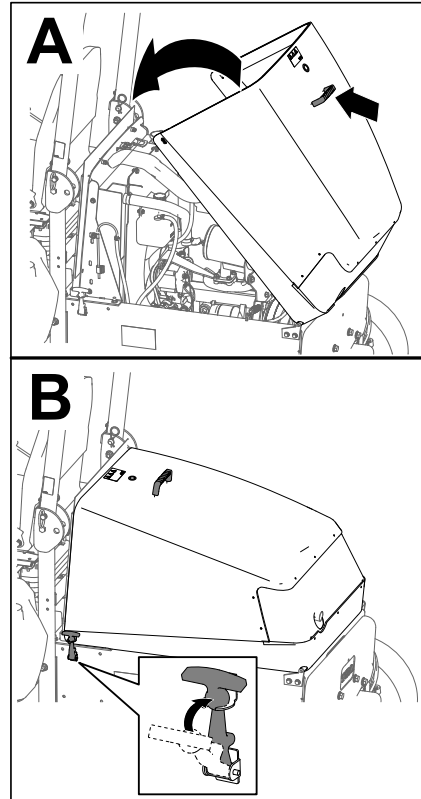


Figure 24

g198445

Checking the Machine Daily

Check the following machine systems each day before operating the machine:

- **Air Cleaner Indicator**; refer to [Checking the Air Cleaner Indicator \(page 45\)](#)
- **Engine oil**; refer to [Checking the Engine-Oil Level \(page 46\)](#)
- **Coolant system**; refer to [Checking the Cooling System and Coolant Level \(page 60\)](#)
- **Hood screen and radiator**; refer to [Checking the Hood Screen and Radiator for Debris \(page 61\)](#)
- **Hydraulic system**; refer to [Checking the Hydraulic System and Fluid Level \(page 67\)](#)

Checking the Air Pressure in the Tires

Service Interval: Before each use or daily

Tire air pressure specification (front and rear tires): 138 kPa (20 psi).

▲ DANGER

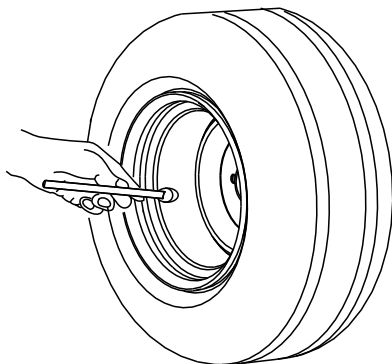
Low tire pressure decreases machine side-hill stability. This could cause a rollover, which may result in personal injury or death.

Do not underinflate the tires.

Check the air pressure in the front and rear tires. Add or remove air as needed to set the air pressure in the tires to the tire air pressure specification.

Important: Maintain pressure in all tires to ensure a good quality of cut and proper machine performance.

Check the air pressure in all the tires before operating the machine.



G001055

g001055

Figure 25

Checking the Interlock System

Service Interval: Before each use or daily

The purpose of the safety interlock system is to prevent the engine from cranking or starting unless the traction pedal is in neutral and the PTO switch is in the OFF position. In addition, the engine should stop when

- the PTO switch is set to the ON position and the operator off the seat;
- the traction pedal is pressed with the operator off the seat;
- the traction pedal pressed with the parking brake set.

▲ CAUTION

If the safety-interlock switches are disconnected or damaged, the machine could operate unexpectedly, causing personal injury.

- **Do not tamper with the interlock switches.**
- **Check the operation of the interlock switches daily and replace any damaged switches before operating the machine.**

1. Move PTO switch to OFF position and remove foot from traction pedal so it is fully released.
2. Rotate the key switch to the START position. If the engine cranks, proceed to step 3.

Note: If engine does not crank, there may be a malfunction in the safety-interlock system.

3. With the engine running, raise off the seat and set the PTO switch to the ON position. The engine should shut off within 2 seconds. If the engine shuts off, proceed to step 4.

Important: If engine does not shut off, there is a malfunction in the safety-interlock system.

4. With the engine running and the PTO switch set to the OFF position, raise off the seat and press the traction pedal. The engine should shut off within 2 seconds. If engine shuts off, proceed to step 5

Important: If engine does not shut off, there is a malfunction in the safety-interlock system.

5. Engage the parking brake. With the engine running and the PTO switch set to the ON position, press the traction pedal. The engine

should shut off within 2 seconds. If engine shuts off, the switch is operating correctly; the interlock system is ready for machine operation.

Important: If engine does not shut off, there is a malfunction in the safety-interlock system.

Adding Fuel

Use only clean, fresh diesel fuel or biodiesel fuels with low (<500 ppm) or ultra low (<15 ppm) sulfur content. The minimum cetane rating should be 40. Purchase fuel in quantities that can be used within 180 days to ensure fuel freshness.

Fuel tank capacity: 72 L (12.8 US gallons)

Use summer-grade diesel fuel (No. 2-D) at temperatures above -7°C (20°F) and winter grade (No. 1-D or No. 1-D/2-D blend) below that temperature. Using winter-grade fuel at lower temperatures provides lower flash point and cold flow characteristics which will ease starting and reduce fuel filter plugging.

Using summer-grade fuel above -7°C (20°F) will contribute toward longer fuel pump life and increased power compared to winter-grade fuel.

Important: Do not use kerosene or gasoline instead of diesel fuel. Failure to observe this caution will damage the engine.

Using Biodiesel

This machine can also use a biodiesel-blended fuel of up to B20 (20% biodiesel, 80% petrodiesel).

Sulfur content: Ultra-low sulfur (<15 ppm)

Biodiesel fuel specification: ASTM D6751 or EN14214

Blended fuel specification: ASTM D975, EN590, or JIS K2204

Important: The petroleum diesel portion must be ultra-low sulfur.

Observe the following precautions:

- Biodiesel blends may damage painted surfaces.
- Use B5 (biodiesel content of 5%) or lesser blends in cold weather.
- Monitor seals, hoses, gaskets in contact with fuel as they may degrade over time.
- Fuel filter plugging may occur for a time after you convert to biodiesel blends.
- For more information on biodiesel, contact your authorized Toro distributor.

Filling the Fuel Tank

Note: If possible, fill the fuel tank after each use; this minimizes possible buildup of condensation inside the fuel tank.

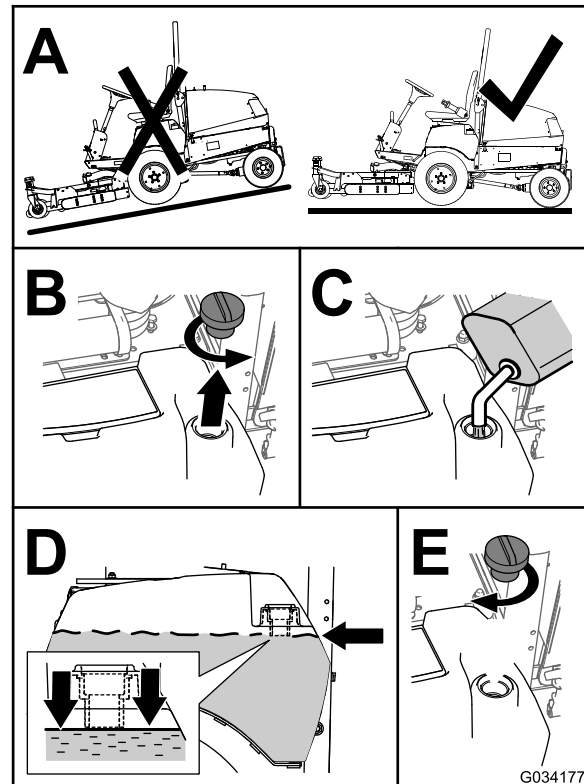
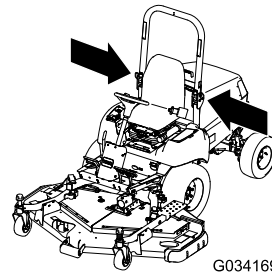


Figure 26

g034177

Adjusting the Roll Bar



⚠ WARNING

To avoid injury or death from rollover: keep the roll bar in the raised locked position and use the seat belt.

Ensure that the seat is secured with the seat latch.

⚠ WARNING

There is no rollover protection when the roll bar is in the down position.

- Do not operate the machine on uneven ground or on a hill side with the roll bar in the down position.
- Lower the roll bar only when absolutely necessary.
- Do not wear the seat belt when the roll bar is in the down position.
- Drive slowly and carefully.
- Raise the roll bar as soon as clearance permits.
- Check carefully for overhead clearances (i.e., branches, doorways, electrical wires) before driving under any objects and do not contact them.

Important: Always use the seat belt when the roll bar is in the raised and locked position. Do not use the seat belt when the roll bar is in the lowered position.

Lowering the Roll Bar

Important: Lower the roll bar only when absolutely necessary.

Important: Ensure that the seat is secured with the seat latch.

1. Park the machine on a level surface, engage the parking brake, lower the cutting deck, shut off the engine, and remove the key from the key switch.
2. Remove the cotter pins and pins from the roll bar (Figure 27).
3. Lower the roll bar and secure it in place with the pins and cotter pins (Figure 27).

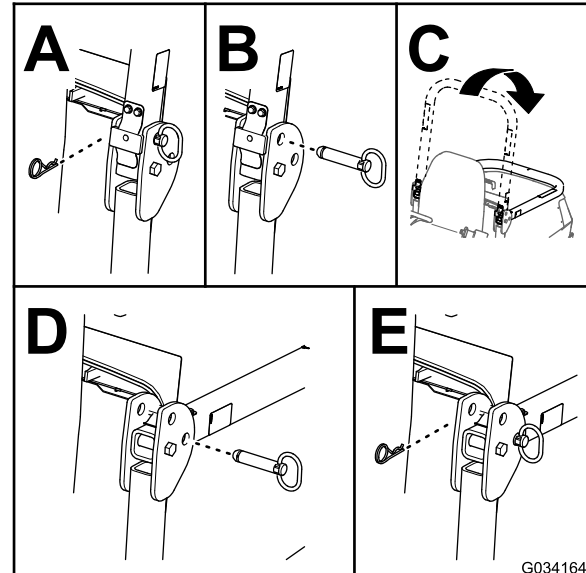


Figure 27

Raising the Roll Bar

1. Park the machine on a level surface, engage the parking brake, lower the cutting deck, shut off the engine, and remove the key from the key switch.
2. Remove the cotter pins and pins from the roll bar (Figure 28).
3. Raise the roll bar and secure it in place with the pins and cotter pins (Figure 28).

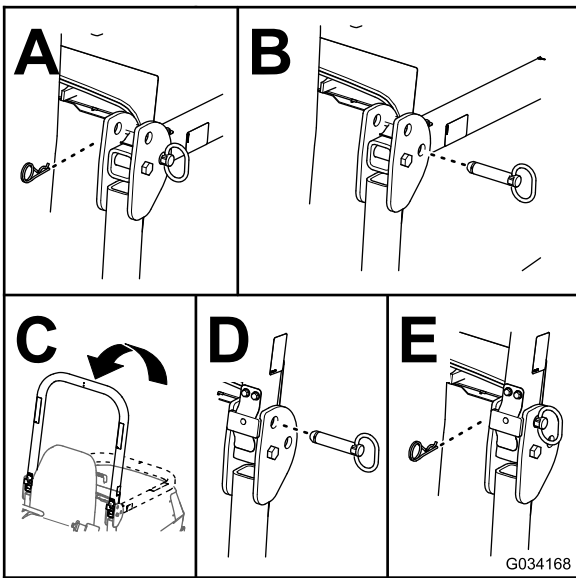


Figure 28

g034168

Adjusting the Tilt-Steering Control

1. Remove the knob from the parking brake and the screws from the steering-column cover (Figure 29).

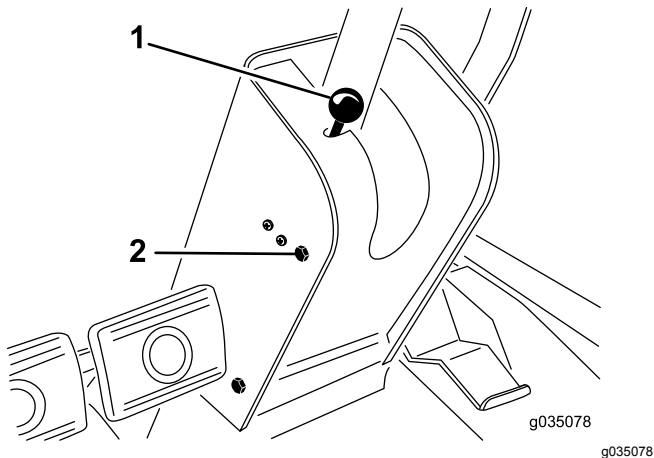


Figure 29

g035078

1. Parking-brake knob
2. Mounting screw (4)

2. Slide the cover up the steering shaft to expose the pivot bracket (Figure 30).

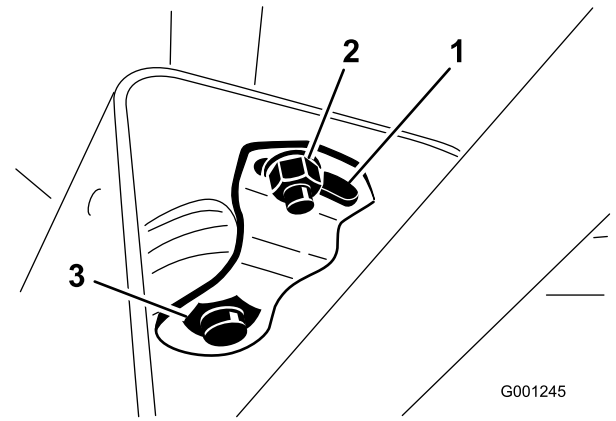


Figure 30

G001245

g001245

1. Pivot plate
2. Small nut
3. Large nut

3. Loosen the small nut and rotate the pivot bracket until it tightens the large nut below it (Figure 30).
4. Tighten the small nut.
5. Install the steering-column cover and the parking-brake knob.

During Operation

General Safety

- The owner/operator can prevent and is responsible for accidents that may cause personal injury or property damage.
- Wear appropriate clothing, including eye protection; long pants; substantial, slip-resistant footwear; and hearing protection. Tie back long hair and do not wear loose jewelry.
- Do not operate the machine while ill, tired, or under the influence of alcohol or drugs.
- Never carry passengers on the machine and keep bystanders and pets away from the machine during operation.
- Operate the machine only in good visibility to avoid holes or hidden hazards.
- Before you start the engine, ensure that all drives are in neutral, the parking brake is engaged, and you are in the operating position.
- Keep your hands and feet away from rotating parts. Keep clear of the discharge opening at all times.
- Look behind and down before backing up to be sure of a clear path.
- Use care when approaching blind corners, shrubs, trees, or other objects that may obscure your vision.
- Stop the blades whenever you are not mowing.
- Stop the machine, remove the key, and wait for all moving parts to stop before inspecting the attachment after striking an object or if there is an abnormal vibration in the machine. Make all necessary repairs before resuming operation.
- Slow down and use caution when making turns and crossing roads and sidewalks with the machine. Always yield the right-of-way.
- Disengage the drive to the cutting unit, shut off the engine, remove the key, and wait for all moving parts to stop before adjusting the height of cut (unless you can adjust it from the operating position).
- Never run an engine in an area where exhaust gasses are enclosed.
- Never leave a running machine unattended.
- Before leaving the operating position (including to empty the catchers or to unclog the chute), do the following:
 - Park the machine on level ground.
 - Disengage the power takeoff and lower the attachments.
 - Engage the parking brake.

- Shut off the engine and remove the key.
- Wait for all moving parts to stop.
- Do not operate the machine when there is the risk of lightning.
- Do not use the machine as a towing vehicle.
- Use accessories, attachments, and replacement parts approved by The Toro® Company only.

Rollover Protection System (ROPS) Safety

- **Do not** remove the ROPS from the machine.
- Ensure that the seat belt is attached and that you can release it quickly in an emergency.
- Check carefully for overhead obstructions and do not contact them.
- Keep the ROPS in safe operating condition by thoroughly inspecting it periodically for damage and keeping all the mounting fasteners tight.
- Replace damaged ROPS components. Do not repair or alter them.

Machines with a Foldable Roll Bar

- Always use the seat belt with the roll bar in the raised position.
- The ROPS is an integral safety device. Keep a folding roll bar in the raised and locked position, and use the seat belt when operating the machine with the roll bar in the raised position.
- Lower a folding roll bar temporarily only when necessary. Do not wear the seat belt when the roll bar is folded down.
- Be aware that there is no rollover protection when a folded roll bar is in the down position.
- Check the area that you will be mowing and never fold down a folding roll bar in areas where there are slopes, drop-offs, or water.

Slope Safety

Slopes are a major factor related to loss of control and rollover accidents, which can result in severe injury or death. You are responsible for safe slope operation. Operating the machine on any slope requires extra caution.

- Evaluate the site conditions to determine if the slope is safe for machine operation including surveying the site. Always use common sense and good judgment when performing this survey.
- Review the slope instructions listed below for operating the machine on slopes and review the conditions in which you would operate the

machine to determine whether you can operate it in the conditions on that day and at that site. Changes in the terrain can result in a change in slope operation for the machine.

- Avoid starting, stopping, or turning the machine on slopes. Avoid making sudden changes in speed or direction. Make turns slowly and gradually.
- Do not operate a machine under any conditions where traction, steering, or stability is in question.
- Remove or mark obstructions such as ditches, holes, ruts, bumps, rocks, or other hidden hazards. Tall grass can hide obstructions. Uneven terrain could overturn the machine.
- Be aware that operating the machine on wet grass, across slopes, or downhill may cause the machine to lose traction. Loss of traction to the drive wheels may result in sliding and a loss of braking and steering.
- Use extreme caution when operating the machine near drop-offs, ditches, embankments, water hazards, or other hazards. The machine could suddenly roll over if a wheel goes over the edge or the edge caves in. Establish a safety area between the machine and any hazard.
- Identify hazards at the base of the slope. If there are hazards, mow the slope with a pedestrian-controlled machine.
- If possible, keep the cutting unit(s) lowered to the ground while operating on slopes. Raising the cutting unit(s) while operating on slopes can cause the machine to become unstable.
- Use extreme caution while operating the machine with grass-collection systems or other attachments. These can change the stability of the machine and cause a loss of control.

Starting the Engine

Important: You might need to bleed the fuel system in any of the following situations: initially starting up a new machine, the engine no longer running due to lack of fuel, or fuel system components replaced or serviced.

1. Raise the roll bar and lock it into place.
2. Sit on the seat and fasten the seat belt.
3. Ensure that the parking brake is set and the PTO switch is in the OFF position.
4. Remove your foot from traction pedal and ensure that it is in neutral.
5. Rotate the key switch to the ON/PREHEAT position.

Note: An automatic timer then controls the preheat for 6 seconds.

6. After preheating, rotate the key switch to the START position, **crank the engine for no longer than 15 seconds**, and release the key when the engine starts.

Note: If additional preheating is required, turn the key to the OFF position, then to the ON/PREHEAT position. Repeat this process as required.

7. Move the throttle to idle speed or partial throttle and run the engine until it warms up.

Important: When you start the engine for the first time; or after you change the engine oil or overhaul the engine, transmission, or axle; operate the machine in forward and reverse for 1 to 2 minutes. Also, operate the lift lever and PTO lever to ensure that all parts are properly operating. Turn the power-steering wheel to the left and right to check the steering response. Then shut the engine off, check the fluid levels, and check for oil leaks, loose parts, and any other malfunctions.

Shutting Off the Engine

1. Move the throttle control rearward to the SLOW position.
2. Move the PTO switch to the OFF position.
3. Rotate key switch to the OFF position.
4. Remove the key from the switch to prevent accidental starting.

Resetting the PTO Function

Note: If you leave the operator's seat while the PTO switch is in the ON position, the machine will automatically shut off the engine.

Perform the following to reset the PTO function:

1. Push down the PTO switch knob; refer to [Figure 20](#) and [PTO Switch \(page 24\)](#).
2. Start the engine; refer to [Starting the Engine \(page 34\)](#).
3. Pull up the PTO switch knob; refer to [Figure 20](#) and [PTO Switch \(page 24\)](#).

Bleeding the Fuel-Injection Pump

1. Park the machine on a level surface.
2. Engage the parking brake.
3. Ensure that the fuel tank is at least half full.
4. Unlatch and raise the hood.
5. Open the air-bleed screw on the fuel-injection pump ([Figure 31](#)).

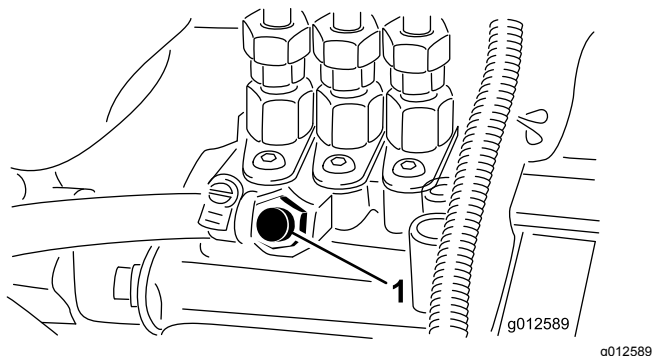


Figure 31

1. Air-bleed screw

-
6. Rotate the key switch to the ON position.
The electric fuel pump begins forcing air out around the air-bleed screw.
 7. Leave the key switch in the ON position until a solid stream of fuel flows out around the screw.
 8. Tighten the screw and rotate key switch to the OFF position.

Note: The engine should start after you perform this procedure. However, if the engine does not start, air may be trapped between the injection pump and the injectors; refer to [Bleeding the Air from the Fuel-Injector Tubing \(page 48\)](#).

9. Wipe clean any fuel that has accumulated around the injection pump.

Operating Tips

- Practice driving before operating the machine, because it has a hydrostatic transmission and its characteristics are different than some turf-maintenance machines.
- To maintain enough power for the machine and deck while mowing, regulate the traction pedal to keep the engine speed (rpm) high and constant. Decrease the ground speed as the load on the cutting blades increases; increase the ground speed as the load on the blades decreases. This allows the engine, working with the transmission, to sense the proper ground speed while maintaining a high blade-tip speed necessary for good quality of cut. Therefore, allow the traction pedal to move upward as the engine speed decreases, and press pedal slowly as the speed increases. When driving from 1 work area to another (with no load and the deck raised), have throttle in the FAST position and press the traction pedal slowly but fully to attain the maximum ground speed.
- Lock the brake pedals together before transporting the machine.
- You can use the brakes to assist in turning the machine; but, use them carefully on soft or wet grass because doing so may damage the turf. You can also use the brakes to control the direction of the deck when trimming along fences or similar objects. A third way you can use the brakes is to maintain traction. For example; in some slope conditions, the uphill wheel slips and loses traction. If this happens, press the uphill brake pedal gradually and intermittently until the uphill wheel stops slipping, thus increasing the traction on the downhill wheel. If you do not want independent braking, set the lever on left brake pedal with right pedal. This provides simultaneous braking at both wheels.
- Before shutting off the engine, move all controls to the NEUTRAL position and move the throttle to the SLOW position. Rotate the key switch to the OFF position to shut off the engine.
- The engine does not run when the engine coolant is in over temperature condition. Let the engine and cooling system cool, and check the cooling system; refer to [Checking the Cooling System and Coolant Level \(page 60\)](#).

After Operation

After Operation Safety

- Clean grass and debris from the cutting units, mufflers, and engine compartment to help prevent fires. Clean up oil or fuel spills.
- If the cutting units are in the transport position, use the positive mechanical lock (if available) before you leave the machine unattended.
- Allow the engine to cool before storing the machine in any enclosure.
- Remove the key and shut off the fuel (if equipped) before storing or transporting the machine.
- Never store the machine or fuel container where there is an open flame, spark, or pilot light, such as on a water heater or on other appliances.
- Keep all parts of the machine in good working condition and all hardware tightened, especially blade-attachment hardware.
- Replace all worn or damaged decals.

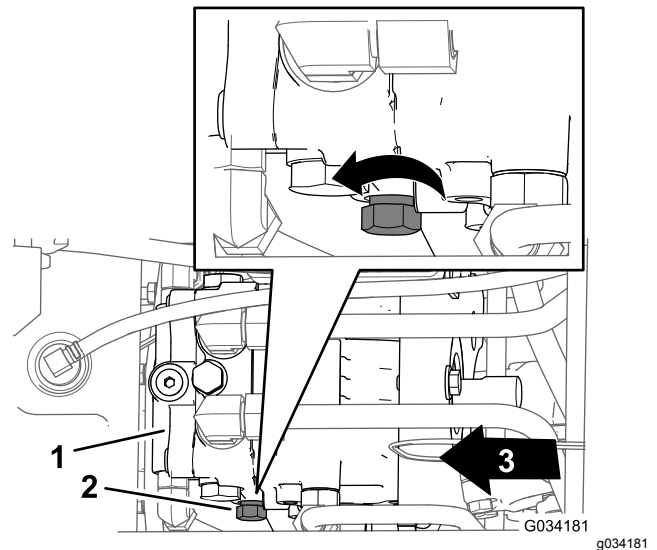


Figure 32

1. Hydraulic pump
2. Control knob (bypass valve)
3. Front of the machine

3. Rotate the control knob 3 turns counterclockwise (Figure 32).

Important: Do not rotate the control knob more than 3 turns.

4. Push or tow the machine.

Pushing or Towing the Machine

In an emergency, you can move the machine a very short distance by actuating the bypass valve in the hydraulic pump and pushing or towing the machine.

Important: Do not push or tow the machine faster than 3 to 4.8 km/h (2 to 3 mph). If you push or tow at a faster speed, internal transmission damage may occur. If you must move the machine a considerable distance, transport it on a truck or trailer.

Important: The bypass valve must be open whenever you push or tow the machine. Close the valve once you have pushed or towed the machine to the desired location.

Opening the Bypass Valve

1. Remove the seat and seat plate; refer to [Removing the Seat and Seat Plate \(page 42\)](#).
2. Locate the control knob for the bypass valve at the left side of the hydraulic pump (Figure 32).

Closing the Bypass Valve

Note: Close the bypass before you start the engine.

1. Finish pushing or towing the machine.
2. Locate the control knob for the bypass valve at the left side of the hydraulic pump (Figure 32).
3. Rotate the control knob (Figure 32) clockwise until you feel resistance, which indicates that the bypass valve is closed.
4. Install the seat and seat plate; refer to [Installing the Seat and Seat Plate \(page 42\)](#).

Hauling the Machine

- Remove the key and shut off the fuel (if equipped) before storing or transporting the machine.
- Use care when loading or unloading the machine into a trailer or a truck.
- Use full-width ramps for loading the machine into a trailer or a truck.
- Tie the machine down securely.

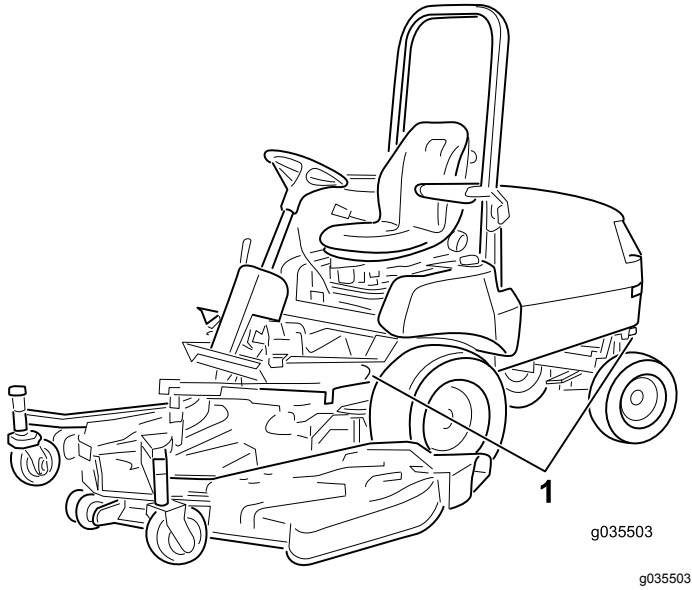


Figure 33

1. Tie-down loops
-

Maintenance

Note: Determine the left and right sides of the machine from the normal operating position.

Important: Refer to your engine owner's manual for additional maintenance procedures.

Note: Download a free copy of the electrical or hydraulic schematic by visiting www.Toro.com and searching for your machine from the MANUALS link on the home page.

Recommended Maintenance Schedule(s)

Maintenance Service Interval	Maintenance Procedure
After the first hour	<ul style="list-style-type: none"> • Torque the wheel-lug nuts.
After the first 10 hours	<ul style="list-style-type: none"> • Torque the wheel-lug nuts. • Check and adjust the service brakes. • Check the tension on the alternator belt. • Check the tension on the PTO belt. • Change the hydraulic-fluid filter.
After the first 50 hours	<ul style="list-style-type: none"> • Change the engine oil and filter. • Check and adjust the service brakes. • Check the tension on the PTO belt.
Before each use or daily	<ul style="list-style-type: none"> • Check the air pressure in the tires. • Check the interlock system. • Check the air-cleaner indicator. • Check the engine-oil level. • Check the cooling system and the coolant level. • Check the hood screen and radiator for debris. • Check the hydraulic system and fluid level.
Every 50 hours	<ul style="list-style-type: none"> • Grease the bearings and bushings. • Inspect the air-cleaner element. • Check the battery-cable connections. • Check the battery electrolyte level when in operation. • Lubricate the brake cables.
Every 150 hours	<ul style="list-style-type: none"> • Change the engine oil and filter.
Every 200 hours	<ul style="list-style-type: none"> • Torque the wheel-lug nuts. • Check the rear axle lubricant (4-wheel drive machines only). • Check the bidirectional clutch lubricant (4-wheel drive machines only). • Check the rear wheel alignment. • Torque the bolts for the steering-cylinder mount (4-wheel drive machines only). • Inspect the cooling-system hoses. • Check the condition of the alternator belt. • Check the tension on the alternator belt. • Check the condition of and tension on the PTO belt. • Adjust the PTO-clutch gap. • Change the hydraulic-fluid filter.
Every 400 hours	<ul style="list-style-type: none"> • Grease the rear-axle bearings • Replace the primary air-cleaner element(s) (earlier if the air cleaner indicator shows red, and more frequently in extremely dirty or dusty conditions). Replace the safety filter after every 3 primary air-cleaner element replacements. • Replace the fuel-filter canister. • Drain and clean the fuel tank • Inspect the fuel lines and connections. • Change the rear-axle lubricant (4-wheel drive machines only). • Change the bidirectional-clutch lubricant (4-wheel drive machines only).

Maintenance Service Interval	Maintenance Procedure
Every 1,500 hours	<ul style="list-style-type: none">• Replace any moving hoses.• Flush and replace the cooling-system fluid.• Replace the hydraulic fluid.
Monthly	<ul style="list-style-type: none">• Check the battery electrolyte level when in storage.

Daily Maintenance Checklist

Duplicate this page for routine use.

Maintenance Check Item	For the week of:						
	Mon.	Tues.	Wed.	Thurs.	Fri.	Sat.	Sun.
Check the safety-interlock operation.							
Check that the ROPS is fully raised and locked in position.							
Check that the grass deflector is in the down position.							
Check the brake operation.							
Check the fuel level.							
Check the engine-oil level.							
Check the cooling-system-fluid level.							
Drain the water/fuel separator.							
Check the air-filter indicator. ³							
Check the radiator and screen for debris.							
Check for unusual engine noises. ¹							
Check for unusual operating noises.							
Check the transmission-oil level.							
Check the hydraulic hoses for damage.							
Check for fluid leaks.							
Check the tire pressure.							
Check the instrument operation.							
Check the condition of the blades.							
Lubricate all the grease fittings. ²							
Touch up any damaged paint.							
¹ Check the glow plug and injector nozzles if the engine is hard to start, there is excess smoke, or the engine runs rough ² Immediately after every washing, regardless of the interval listed ³ If the indicator shows red							

Important: Refer to your engine owner's manual for additional maintenance procedures.

Notation for Areas of Concern		
Inspection performed by:		
Item	Date	Information

Pre-Maintenance Procedures

Maintenance Safety

- Before adjusting, cleaning, repairing, or leaving the machine, do the following:
 - Park the machine on a level surface.
 - Move the throttle switch to the low-idle position.
 - Disengage the cutting units.
 - Lower the cutting units.
 - Ensure that the traction is in neutral.
 - Engage the parking brake.
 - Shut off the engine and remove the key.
 - Wait for all moving parts to stop.
 - Allow machine components to cool before performing maintenance.
- If the cutting units are in the transport position, use the positive mechanical lock (if available) before you leave the machine unattended.
- If possible, do not perform maintenance while the engine is running. Keep away from moving parts.
- Use jack stands to support the machine or components when required.
- Carefully release pressure from components with stored energy.

Accessing the Machine

Opening the Hood

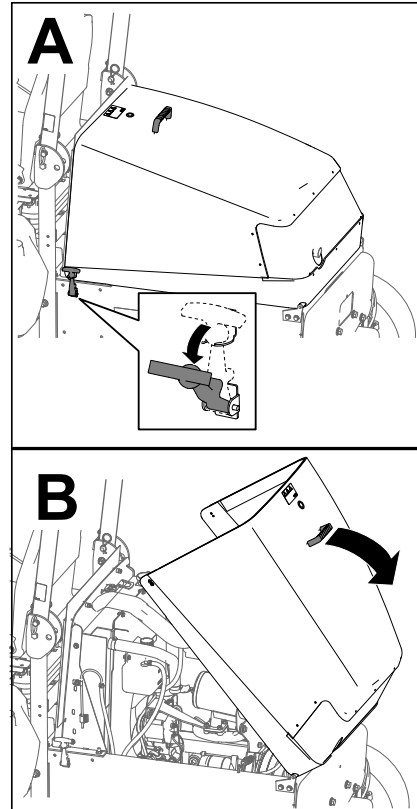


Figure 34

g198446

Closing the Hood

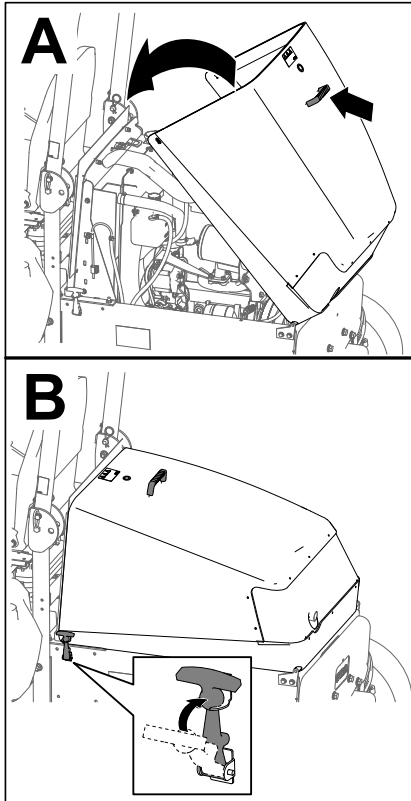
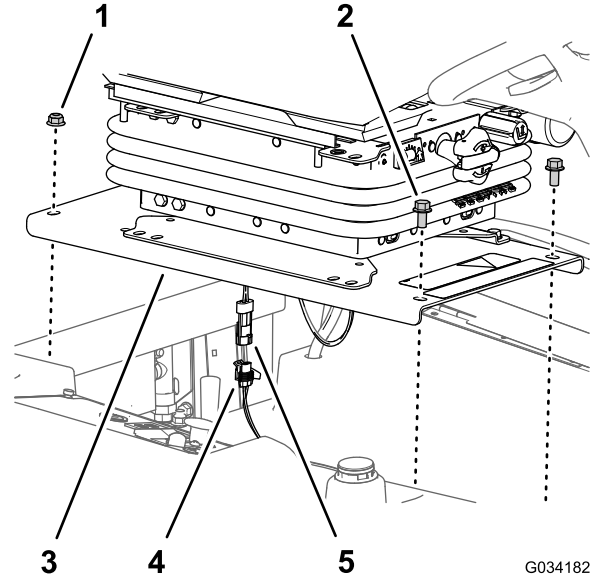


Figure 35

Accessing the Hydraulic Pump

Removing the Seat and Seat Plate

1. Remove the 2 flange-head bolts (3/8 x 3/4 inch) at the that secure the front of the seat plate to the chassis of the machine (Figure 36).



g198445

G034182

g034182

Figure 36

1. Flange locknuts (3/8 inch)
2. Flange-head bolts (3/8 x 3/4 inch)
3. Seat plate
4. 2-socket connector (machine wire harness)
5. 2-pin connector (operator-presence switch harness)

2. Remove the 2 flange locknuts (3/8 inch) at the that secure the back of the seat plate to the chassis of the machine (Figure 36)
3. Partially lift the seat assembly.
4. Disconnect the 2-pin connector for the operator-presence switch harness from the 2-socket connector of the machine wire harness (Figure 36).
5. Remove the seat assembly from the machine.

Installing the Seat and Seat Plate

Install the seat once you have repaired the machine and closed the bypass valve for the hydraulic pump.

1. Align the seat assembly to the opening in the fuel tank.
2. Connect the 2-pin connector for the operator-presence switch harness into the 2-socket connector of the machine wire harness; refer to Figure 36 .

3. Align the rear holes in the seat plate (Figure 36) with the 2 carriage bolts (3/8 x 1 inch) in the radiator channel.
4. Assemble the seat plate (Figure 36) to the carriage bolts with the 2 flange locknuts (3/8 inch) that you removed in step 2 of [Installing the Seat and Seat Plate](#) (page 42).
5. Align the front holes in the seat plate (Figure 36) with the threads of the tank rods.
6. Assemble the seat plate (Figure 36) to the tank rods with the 2 flange-head bolts (3/8 x 3/4 inch) that you removed in step 1 of [Accessing the Fuse Block and Standard Control Module](#) (page 51).
7. Torque the flange locknuts and flange-head bolts to 37 to 45 N·m (27 to 33 ft-lb).
8. Check the interlock system; refer to [Checking the Interlock System](#) (page 29).

Lubrication

Greasing the Bearings and Bushings

Service Interval: Every 50 hours—Grease the bearings and bushings. When operating the machine in extremely dusty and dirty conditions, lubricate the bearings and bushings daily.

Every 400 hours/Yearly (whichever comes first)—Grease the rear-axle bearings

Grease specification: No. 2 lithium grease.

Important: *Dusty and dirty operating conditions could cause dirt to get into the bearings and bushings, resulting in accelerated wear.*

Note: Lubricate grease fitting immediately after every washing, regardless of interval specified.

1. Wipe grease fitting clean so foreign matter cannot be forced into the bearing or bushing.
2. Pump grease into the bearing or bushing.
3. Wipe up excess grease.

The bearing and bushing lubrication points are as follows:

- PTO universal shaft (Figure 37)

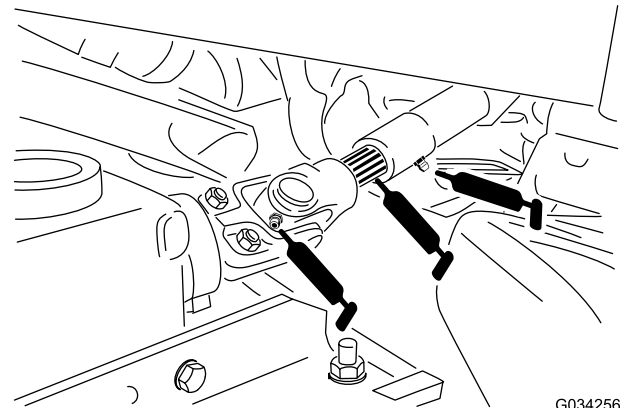


Figure 37

- Lift-arm pivot bushings (Figure 38)

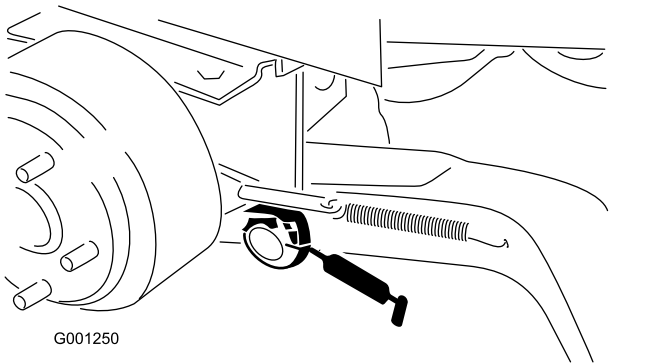


Figure 38

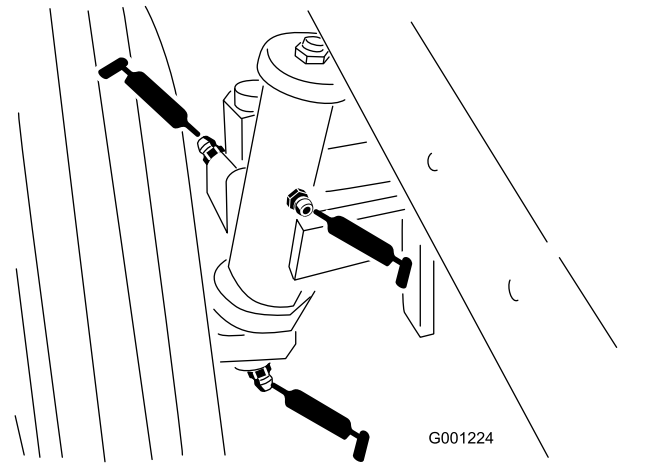


Figure 41

- Brake pivot bushings (Figure 39)

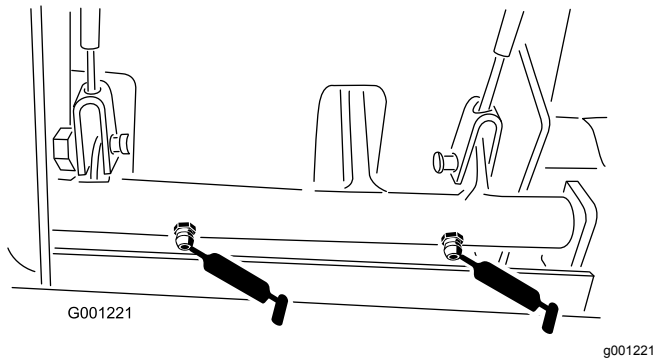


Figure 39

- Brake cables (drive wheel and brake pedal ends) (Figure 39)
- PTO tension pivot (Figure 40)

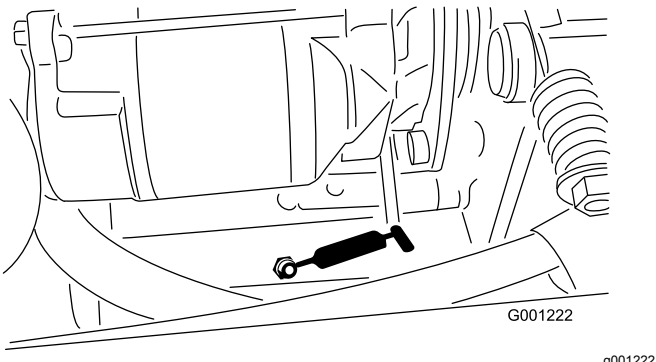


Figure 40

- Rear PTO bearing (Figure 40)
- Rear wheel spindle bushings (Figure 41)

- Steering-plate bushings (Figure 42)

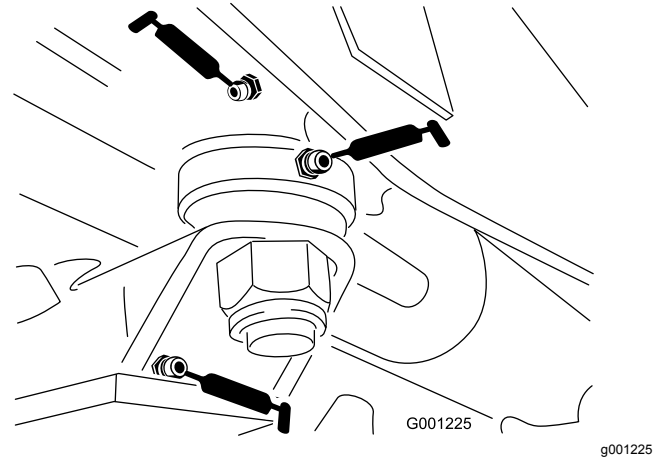


Figure 42

- Axle-pin bushing (Figure 42)
- Drive shaft (3) (Figure 43)

Note: 4-wheel-drive models only

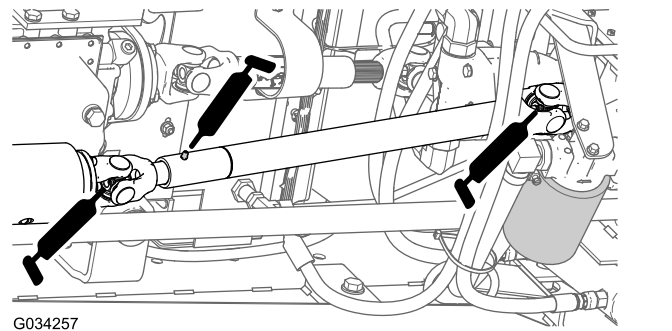


Figure 43

- Tie-rod ends (2) (Figure 44)

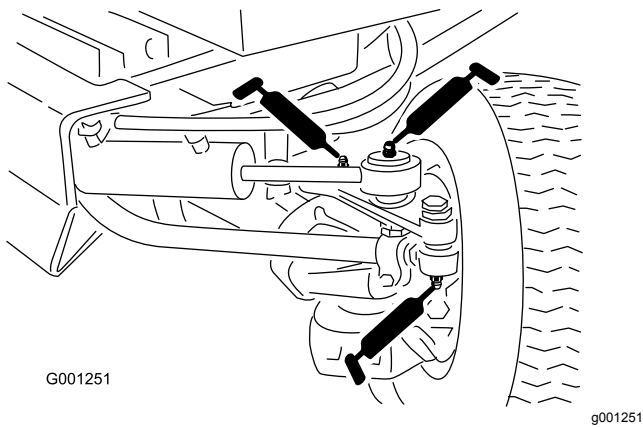


Figure 44

- Cylinder-rod ends (2) (Figure 44)
- Steering pivots (2) (Figure 44)
- Axle-pivot pin (Figure 44)

Note: Bearing life can be negatively affected by improper wash-down procedures. Do not wash down the machine when it is still hot and avoid directing high-pressure or high-volume spray at the bearings.

Engine Maintenance

Engine Safety

- Shut off the engine and remove the key before checking the oil or adding oil to the crankcase.
- Do not change the governor speed or overspeed the engine.

Servicing the Air Cleaner

Checking the Air Cleaner Indicator

Service Interval: Before each use or daily

- Check the air-cleaner body for damage that could cause an air leak. Replace a damaged air-cleaner body. Check the whole intake system for leaks, damage, or loose hose clamps.
- Replace the air cleaner element when the air-cleaner indicator (Figure 45) shows red. Do not over-clean the air-filter element.

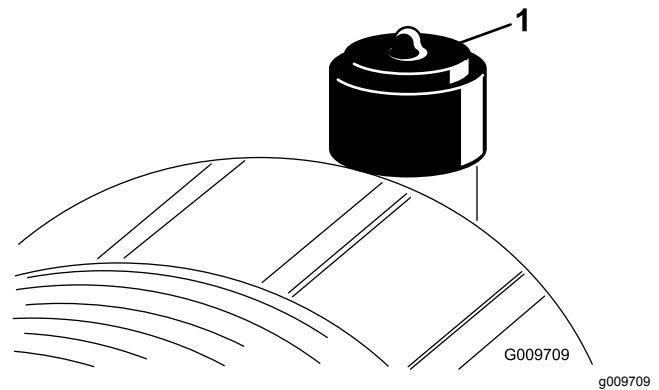


Figure 45

1. Air-cleaner indicator

- Ensure that the cover is seated correctly and seals with the air-cleaner body.

Replacing the Air Cleaner Elements

Service Interval: Every 50 hours—Inspect the air-cleaner element.

Every 400 hours—Replace the primary air-cleaner element(s) (earlier if the air cleaner indicator shows red, and more frequently in extremely dirty or dusty conditions). Replace the safety filter after every 3 primary air-cleaner element replacements.

Important: Avoid using high-pressure air that could force dirt through the filter and into the intake tract, causing damage. This cleaning

process prevents debris from migrating into the intake when you remove the primary filter.

Important: Do not clean the used element to prevent the possibility of damaging the filter media. Inspect the new filter for shipping damage, checking the sealing end of the filter and the body. Do not use a damaged element.

Important: Be sure that the cover is seated correctly and seals with the air-cleaner body.

1. Replace the primary air-cleaner element (Figure 46).

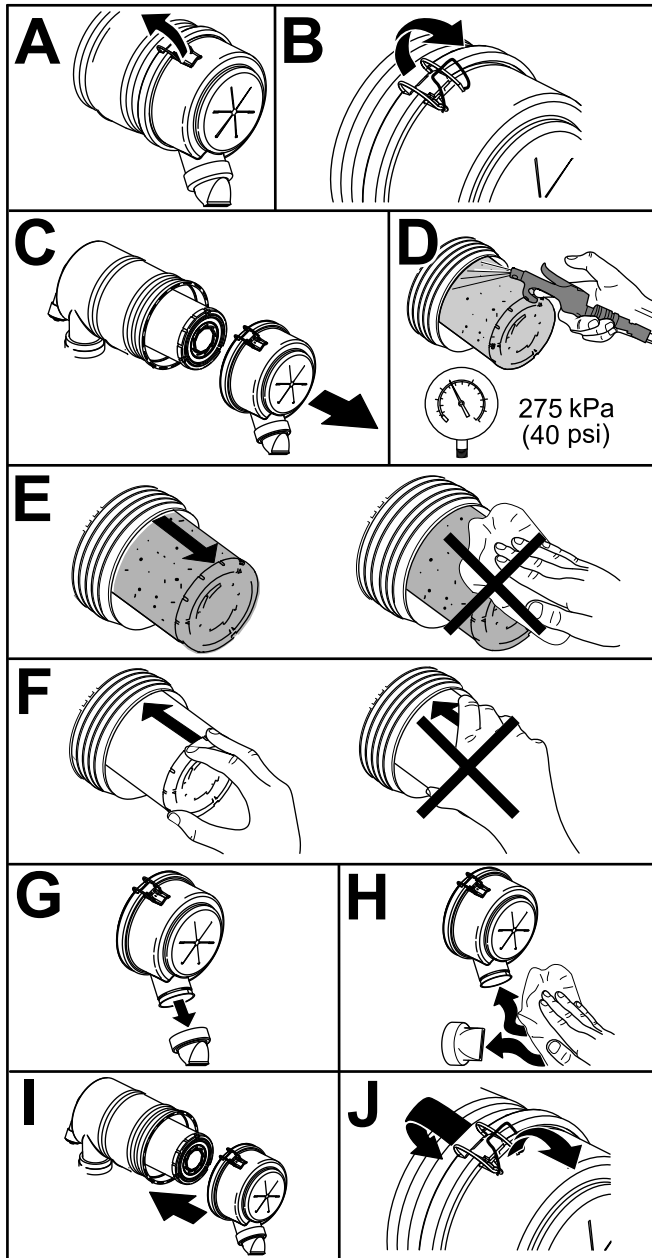


Figure 46

g243913

2. Check the air-cleaner safety filter for dust and debris (Figure 47).

Important: Never attempt to clean the safety filter (Figure 47). Replace the safety filter after every 3 primary filter services.

Note: Replace the air-cleaner safety filter if it is dirty.

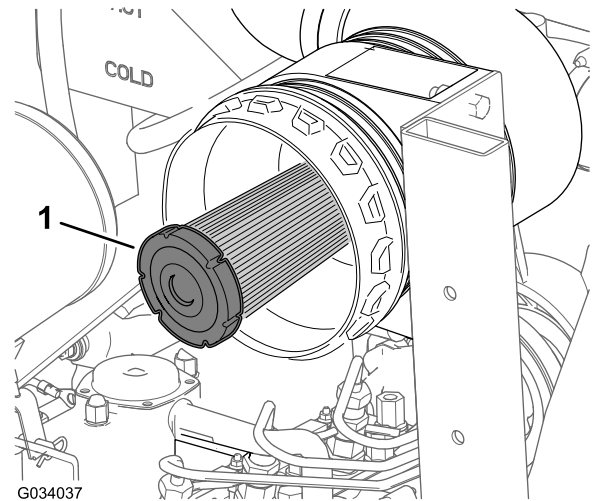


Figure 47

G034037

g034037

1. Air-cleaner safety filter

3. Reset the air-cleaner indicator if it shows red; refer to [Checking the Air Cleaner Indicator \(page 45\)](#).

Servicing the Engine Oil

The engine is shipped with oil in the crankcase.

Crankcase capacity: approximately 3.8 L (4 US qt) with the filter.

Engine oil specification:

- **Engine oil-type**—API Classification Level Required: CH-4, CI-4 or higher.
- **Engine oil viscosity**
 - Preferred oil: SAE 15W-40 (above 0°F)
 - Alternate oil: SAE 10W-30 or 5W-30 (all temperatures)

Note: Toro Premium Engine Oil is available from your distributor in either 15W-40 or 10W-30 viscosity. See the parts catalog for part numbers.

Checking the Engine-Oil Level

Service Interval: Before each use or daily Check the engine-oil level before the engine is first started and daily thereafter.

Note: The best time to check the engine oil is when the engine is cool before it has been started for the day. If you have already run the engine, allow the oil to drain back down to the sump for at least 10 minutes

before checking. If the oil level is at or below the ADD mark on the dipstick, add oil to bring the oil level to the FULL mark. Do not overfill. If the oil level is between the FULL and ADD marks, you do not need to add oil.

1. Park the machine on a level surface, engage the parking brake, lower the cutting deck, shut off the engine, and remove the key from the key switch.
2. Open the hood.
3. Check the engine-oil level as shown in [Figure 48](#).

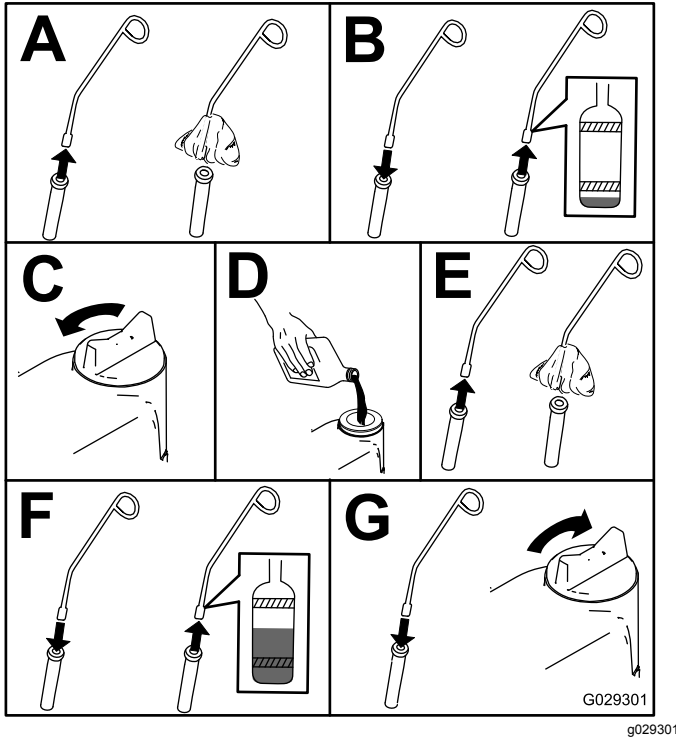


Figure 48

4. If the oil level is below the Full mark, remove the fill cap ([Figure 49](#)) and add oil until the level reaches the Full mark on the dipstick. **Do not overfill.**

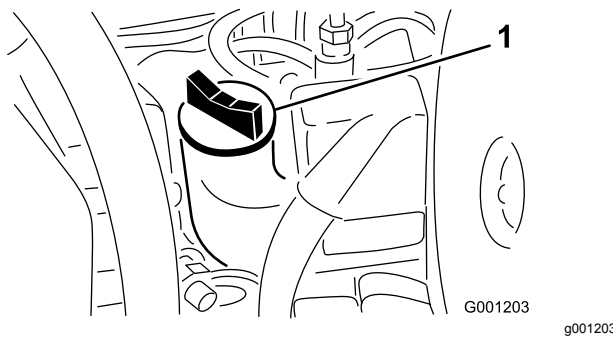


Figure 49

1. Oil fill

5. Install the oil-fill cap and close the hood.

Changing the Engine Oil And Filter

Service Interval: After the first 50 hours

Every 150 hours

If possible, run engine just before changing oil because warm oil flows better and carries more contaminants than cold oil.

1. Position the machine on a level surface.
2. Open the hood.
3. Set a drain pan under the oil pan and in line with the drain plug ([Figure 50](#)).



Figure 50

1. Drain plug

4. Clean the area around the drain plug.
5. Remove the drain plug and allow the oil to flow into the drain pan.
6. Remove and replace the oil filter ([Figure 51](#)).

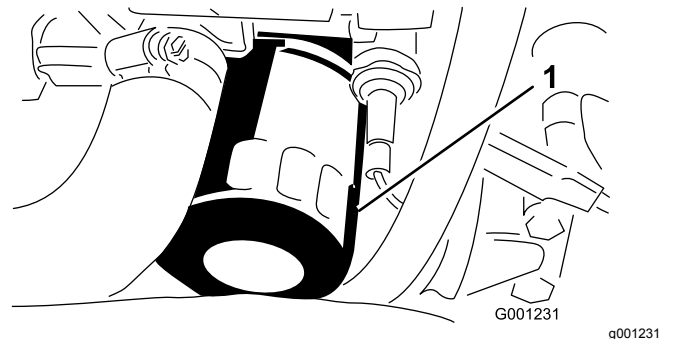


Figure 51

1. Oil filter

7. Install the drain plug and wipe up any spilled oil.
8. Fill the crankcase with specified oil; refer to the [Servicing the Engine Oil](#) (page 46).

Fuel System Maintenance

Note: Refer to [Adding Fuel \(page 30\)](#) for proper the fuel recommendations.

⚠ DANGER

Under certain conditions, diesel fuel and fuel vapors are highly flammable and explosive. A fire or explosion from fuel can burn you and others and can cause property damage.

Never smoke when handling fuel, and stay away from an open flame or where fuel fumes may be ignited by a spark.

Servicing the Water Separator

Service Interval: Every 400 hours

Drain the water or other contaminants from the water separator ([Figure 52](#)) daily.

1. Place a clean container under the fuel filter.
2. Loosen the drain plug on the bottom of the filter canister ([Figure 52](#)).

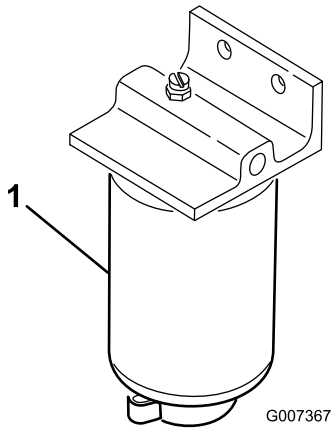


Figure 52

1. Filter canister

3. Clean the area where the filter canister mounts.
4. Remove the filter canister and clean the mounting surface.
5. Lubricate the gasket on the filter canister with clean oil.
6. Install the filter canister by hand until the gasket contacts mounting surface, then rotate it an additional 1/2 turn.
7. Tighten the drain plug on the bottom of the filter canister.

Cleaning the Fuel Tank

Service Interval: Every 400 hours/Yearly (whichever comes first)—Drain and clean the fuel tank

Drain and clean tank if fuel system becomes contaminated or if you store the machine for an extended period of time. Use clean diesel fuel to flush out the tank.

Inspecting the Fuel Lines and Connections

Service Interval: Every 400 hours/Yearly (whichever comes first)

Inspect the fuel lines for deterioration, damage, or loose connections.

Bleeding the Air from the Fuel-Injector Tubing

Note: Perform this procedure only if fuel system has been purged of air through normal priming procedures and engine does not start; refer to [Bleeding the Fuel-Injection Pump \(page 35\)](#).

1. Loosen the tube nut at the No. 1 injector nozzle and holder assembly at the injection pump ([Figure 53](#)).

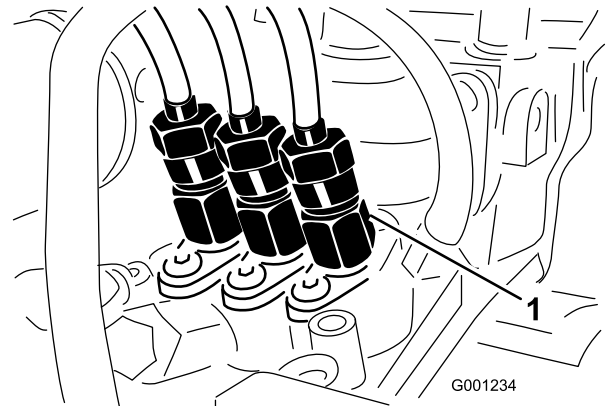


Figure 53

1. No. 1 injector nozzle
2. Move the throttle to the FAST position.
3. Rotate the key switch to the START position and watch the fuel flow around the tube nut.
4. Rotate the key switch to the OFF position when you attain a solid flow of fuel from the tube.
5. Tighten the tube nut securely.

6. Wipe clean any fuel that has accumulated around the injector nozzle and the injection pump.
7. Repeat steps 1 through 6 for the remaining nozzles.

Electrical System Maintenance

Electrical System Safety

WARNING

CALIFORNIA Proposition 65 Warning

Battery posts, terminals, and related accessories contain lead and lead compounds, chemicals known to the State of California to cause cancer and reproductive harm. Wash hands after handling.

- Disconnect the battery before repairing the machine. Disconnect the negative terminal first and the positive last. Connect the positive terminal first and the negative last.
- Charge the battery in an open, well-ventilated area, away from sparks and flames. Unplug the charger before connecting or disconnecting the battery. Wear protective clothing and use insulated tools.

Servicing the Battery

Checking the Battery-Cable Connections

Service Interval: Every 50 hours—Check the battery-cable connections.

⚠ WARNING

Battery terminals or metal tools could short against metal machine components, causing sparks. Sparks can cause the battery gasses to explode, resulting in personal injury.

- **When removing or installing the battery, do not allow the battery terminals to touch any metal parts of the tractor.**
- **Do not allow metal tools to short between the battery terminals and metal parts of the machine.**
- The battery cables must be tight on the terminals to provide good electrical contact.
- If corrosion occurs, perform the following:

⚠ WARNING

Incorrect battery cable routing could damage the machine and cables, causing sparks. Sparks can cause the battery gasses to explode, resulting in personal injury.

- Always disconnect the negative (black) battery cable before disconnecting the positive (red) cable.
 - Always connect the positive (red) battery cable before connecting the negative (black) cable.
1. Open the hood; refer to [Opening the Hood \(page 28\)](#).
 2. Disconnect the negative (-) cable from the battery post ([Figure 54](#)).

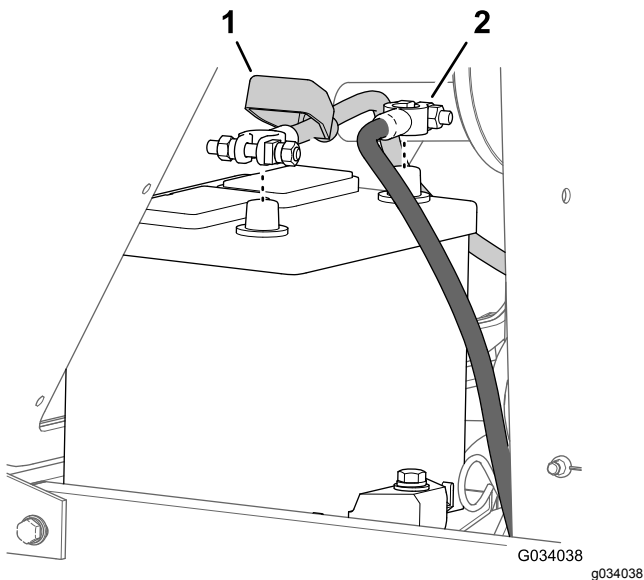


Figure 54

1. Insulator cover (positive battery cable)
2. Negative battery cable

3. Slide the insulator cover away from the battery-cable clamp ([Figure 54](#)).
4. Disconnect the positive (+) cable from the battery post ([Figure 54](#)).
5. Scrape clean the clamps and terminals separately.
6. Coat the terminals of the battery cables with petroleum jelly.
7. Connect the cables, positive (+) cable to the positive battery post ([Figure 54](#)).
8. Connect the negative (-) cable to the negative battery post ([Figure 54](#)).

Checking the Battery Electrolyte

Service Interval: Every 50 hours

Monthly

⚠ DANGER

Battery electrolyte contains sulfuric acid, which is lethal if consumed and causes severe burns.

- Do not drink electrolyte and avoid contact with skin, eyes, or clothing. Wear eye protection to shield your eyes and rubber gloves to protect your hands.
- Fill the battery where clean water is always available for flushing the skin.

Note: If you store the machine in a location where temperatures are extremely high, the battery will run down more rapidly than if the machine is stored in a location where temperatures are cool.

1. Maintain the battery electrolyte concentration at a specific gravity between 1.265 to 1.299.
2. Maintain the cell level with distilled or demineralized water.

Note: Do not fill the cells above the bottom of the split ring inside each cell.

3. Clean the top of the battery periodically by performing the following:

Important: Do not remove the fill caps while cleaning the battery.

- A. Washing the top of the battery with a brush dipped in ammonia or bicarbonate of soda solution.
- B. Flush the top surface with clean water.

Accessing the Fuse Block and Standard Control Module

Removing the Control-Panel Plate

1. Remove the 4 thumb screws that secure the control-panel plate to the fuel tank ([Figure 55](#)).

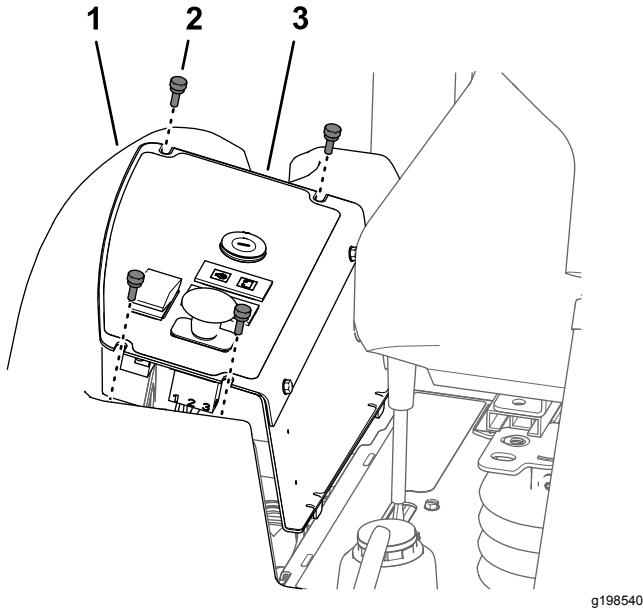


Figure 55

1. Fuel tank
2. Thumb screw
3. Control-panel plate

2. Lift up the control-panel plate ([Figure 55](#)).
3. Disconnect the electrical connectors from the switches and warning lights as necessary to access the fuse block or the standard control module.

Installing the Control-Panel Plate

1. Connect the electrical connectors to the switches and warning lights that you disconnected in step 3 of [Removing the Control-Panel Plate](#) (page 51).
2. Align the 2 tabs at the bottom of the side panel with the 2 slots in the frame for the console ([Figure 56](#)).

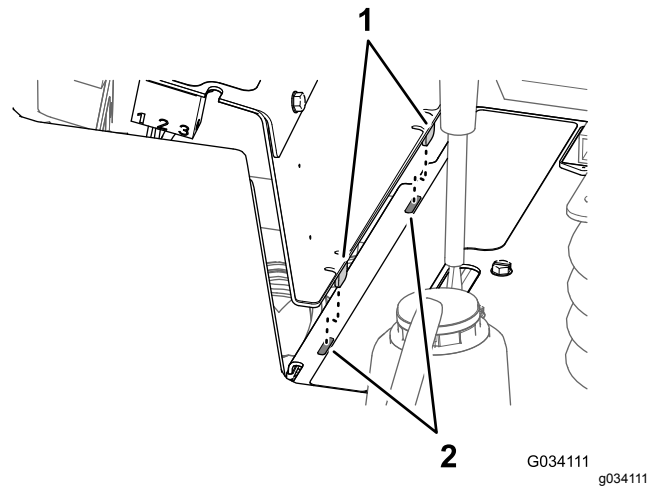


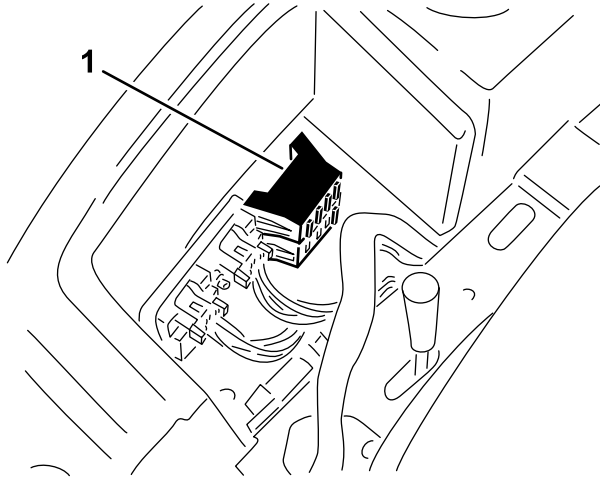
Figure 56

1. Tabs (side panel)
2. Slots (frame—console)

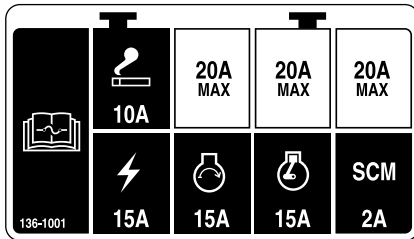
3. Align the slots in the top of the control-panel plate with the holes in the flange of the fuel tank ([Figure 55](#)).
4. Assemble the control panel plate to the flange of the fuel tank with the 4 thumb screws ([Figure 55](#)) that you removed in step 1 of [Removing the Control-Panel Plate](#) (page 51).

Accessing the Fuses

The fuse blocks and fuses are located under the control panel (Figure 57).



g198539



g198735

Figure 57

1. Fuse blocks

Standard Control Module (SCM)

Important: The information presented below is and overview of the standard control module. Refer to the *Service Manual* for the machine for troubleshooting procedures using the standard control module.

The standard control module (SCM) is used to monitor and control standard electrical features of the machine.

Inputs and outputs are identified by yellow LED indicators mounted on the printed-circuit board.

The SCM monitors inputs of the following:

- Controls in the NEUTRAL position
- Parking brake position
- Power takeoff (PTO) operation
- Engine starting function
- High temperature condition

The SCM controls outputs features include the following:

- The SCM energizes the outputs for the PTO, starter, and the ETR (energize to run) solenoids.
- Output LEDs monitor relay condition indicating the presence of voltage at 1 of 3 specific output terminals.

Note: The SCM does not connect to an external computer or hand held device, cannot be re-programmed, and does not record intermittent fault troubleshooting data.

The decal on the SCM only includes symbols. 3 LED output symbols are shown in the output box. All other LEDs are inputs. The chart below identifies the symbols.

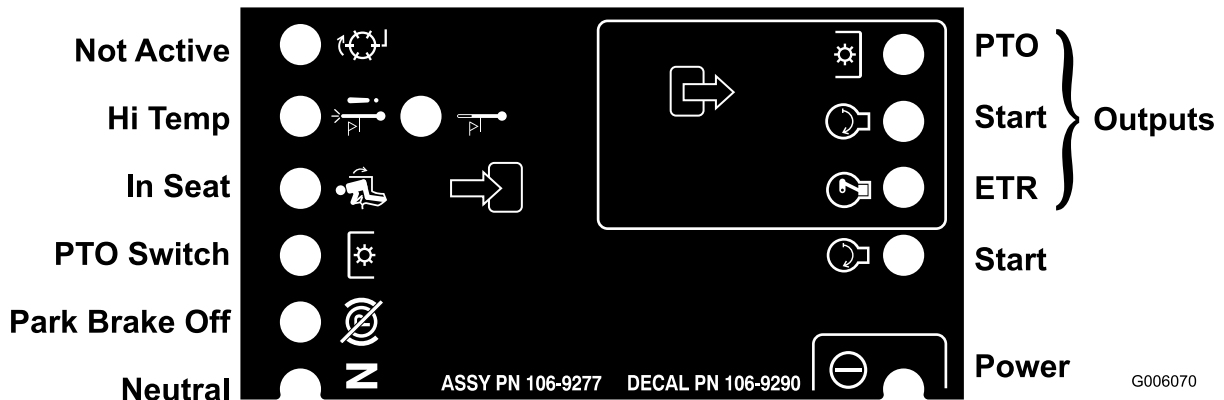


Figure 58

g006070

Each row in the logic chart below identifies input and output requirements for each specific product function. Product functions are listed in the left column. The symbols identify specific circuit conditions, including energized to voltage, closed to ground, and open to ground.

Symbols Chart for the Standard Control Module

Function	Power On	Inputs							Outputs		
		In Neutral	Start On	Brake On	PTO On	In Seat	Hi Temp Shutdown	Hi Temp Warning	Start	ETR	PTO
Start	—	—	+	⊗	⊗	—	⊗	⊗	+	+	⊗
Run (Off Unit)	—	—	⊗	⊗	⊗	⊗	⊗	⊗	⊗	+	⊗
Run (On Unit)	—	⊗	⊗	—	⊗	—	⊗	⊗	⊗	+	⊗
Mow	—	⊗	⊗	—	—	—	⊗	⊗	⊗	+	+
Hi Temp Warning	—		⊗				⊗	— (A)	+	+	⊗
Hi Temp Shutdown	—		⊗				—		⊗	⊗	⊗

(-) Indicates a circuit closed to ground. (LED ON)

(⊗) Indicates a circuit open to ground or de-energized (LED OFF)

(+) Indicates an energized circuit (clutch coil, solenoid, or start input) (LED ON)

A Blank indicates a circuit that is not involved with the logic.

(A) PTO input must be re-initiated after engine cool down (cycle key on-off)

Servicing the Wire Harness

Prevent corrosion of wiring terminals by applying Grafo 112X (Skin-over) grease, Toro Part No. 505-47, to the inside of all harness connectors whenever you replace the harness.

Important: Whenever working with the electrical system, always disconnect the battery cables, negative (-) cable first, to prevent possible wiring damage from short-outs.

Drive System Maintenance

Torquing the Wheel-Lug Nuts

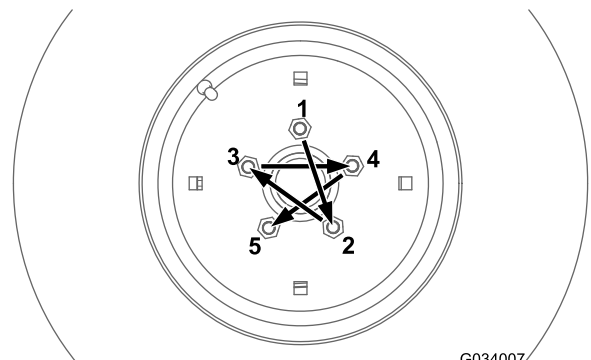
Service Interval: After the first hour

After the first 10 hours

Every 200 hours

Wheel-lug nut torque specification: 102 to 108 N·m (75 to 80 ft-lb)

Torque the lug nuts at the front and rear wheels in a crossing pattern as shown in [Figure 59](#) to the specified torque.



G034007

g034007

Figure 59

Maintaining the Rear Axle

4-Wheel Drive Machines Only

Rear Axle-Lubricant Specification: SAE 80W-90 weight gear lube

Checking the Rear Axle Lubricant

4-Wheel Drive Machines Only

Service Interval: Every 200 hours Check the rear axle lubricant before the machine is operated for the first time, and then every 200 hours thereafter.

The rear axle has 3 separate reservoirs that use SAE 80W-90 weight gear lube. Although the axle is shipped with lubricant from the factory, check the level before operating the machine for the first time.

1. Position the machine on a level surface.
2. Remove the check plug from the center-axle housing and the axle and fill/check plugs at each outboard-axle case (Figure 60 and Figure 61).

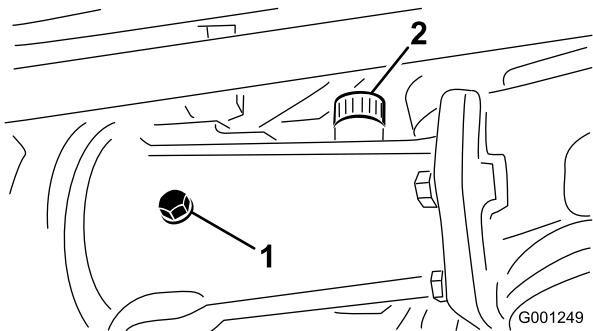


Figure 60

1. Check plug

2. Fill plug

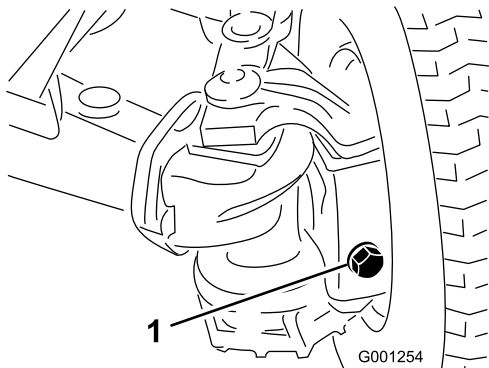


Figure 61

1. Fill/check plug (outboard-axle case—1 on each end of axle)

3. Check that there is lubricant up to the threads at the bottom of each plug hole (Figure 60 and Figure 61).

4. .If the level of lubricant is low, perform the following: and
 - A. If filling the center-axle housing, remove the fill plug (Figure 60).
 - B. Add the specified rear-axle lubricant into the axle reservoir(s) until the lubricant level up to the bottom of the check-plug holes (Figure 60 and Figure 61).
 - C. If removed from the center-axle housing, apply PTFE thread sealant to the threads of the fill plug and install it into the housing (Figure 60).
5. Apply PTFE thread sealant to the threads of the check plug from the center-axle housing and fill/check plugs from the 2 outboard-axle cases (Figure 60).
6. Install the check plug into the center-axle housing and fill/check plugs into the 2 outboard-axle cases (Figure 60 and Figure 61).

Changing the Rear Axle Lubricant

4-Wheel Drive Machines Only

Service Interval: Every 400 hours

1. Position the machine on a level surface.
2. Clean the areas around the 3 drain plugs (Figure 62).

Note: 1 plug at each outboard-axle case and 1 plug at the center-axle housing.

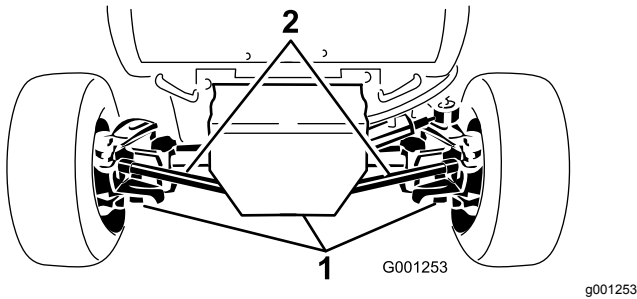


Figure 62

1. Drain plug (3)

3. Align a drain pan under the drain plug, remove the plug, and allow the oil to completely drain.
4. Apply PTFE thread sealant to the threads of the drain-plug and install it in the axle.
5. Repeat steps .3 and 4 at the other 2 drain plugs.
6. Remove the check plug from the center-axle housing and the fill/check plugs at each outboard-axle case
7. Add the specified rear-axle lubricant into the axle reservoir(s) until the lubricant level up to the bottom of the threads at check-plug hole; refer to the lubrication specification in [Maintaining the Rear Axle](#) (page 54).
8. Apply PTFE thread sealant to the threads of the check plug from the center-axle housing and fill/check plugs from the 2 outboard-axle cases; refer to [Figure 60](#) and [Figure 61](#) in [Checking the Rear Axle Lubricant](#) (page 54).
9. Install the check plug into the center-axle housing and fill/check plugs into the 2 outboard-axle cases; refer to [Figure 60](#) and [Figure 61](#) in [Checking the Rear Axle Lubricant](#) (page 54).

Maintaining the Bidirectional Clutch

Clutch lubricant specification: Mobilfluid 424™

Important: Do not use engine oil (such as 10W30) in the bidirectional clutch. Anti-wear and extreme pressure additives cause undesirable clutch performance.

Note: Determine the left and right sides of the machine from the normal operating position.

Checking the Bidirectional Clutch Lubricant

4-Wheel Drive Machines Only

Service Interval: Every 200 hours Check the bidirectional clutch lubricant before the machine is operated for the first time, and then every 200 hours thereafter.

1. Position the machine on a level surface.
2. Rotate the clutch (Figure 63) so that the check plug is positioned at 4 o'clock.

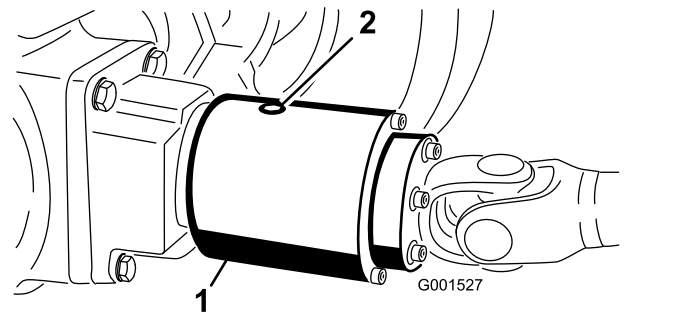


Figure 63

The check plug is shown in the 12 o'clock position.

1. Bidirectional clutch
2. Check plug

3. Remove the check plug.

Note: The fluid level should be up to the hole in the clutch.

4. If the fluid level is low, add the specified fluid into the housing of the bidirectional clutch until it is approximately 1/3 full.
5. Apply PTFE thread sealant to the threads of the check plug.
6. Install the check plug into the clutch housing.

Changing the Bidirectional-Clutch Lubricant

4-Wheel Drive Machines Only

Service Interval: Every 400 hours

1. Position the machine on a level surface.
2. Clean the area around the check plug on the bidirectional clutch.
3. Rotate the clutch so that the check plug is positioned downward ([Figure 64](#)).

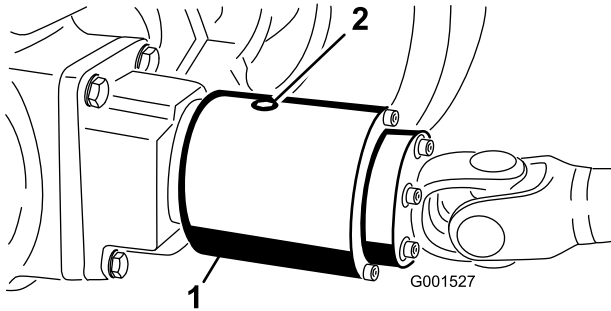


Figure 64

1. Bidirectional clutch
2. Check plug

4. Remove the check plug allowing all lubricant to flow into a drain pan.
5. Rotate the clutch so that the check plug is positioned at 4 o'clock.
6. Add the specified fluid until the lubricant level is up to the threaded hole in the clutch housing.

Note: The clutch should be approximately 1/3 full.

7. Apply PTFE thread sealant to the threads of the check plug.
8. Install the check plug into the clutch housing.

Maintaining the Rear Wheel Alignment

Checking the Rear Wheel Alignment

Service Interval: Every 200 hours

1. Move the machine to a level surface, engage the parking brake, and remove the key from the key switch.
2. Rotate the steering wheel so that the rear wheels are straight ahead.
3. Measure the center-to-center distance at wheel hub height, in front and in back of the rear tires.

Note: The rear wheels should not toe-in or toe-out when they are aligned correctly.

4. If the wheels toe-in or toe-out, align the wheels by performing the following:
 - For 2-wheel drive machines, refer to [Adjusting Rear Wheel Toe-in \(page 57\)](#).
 - For 4-wheel drive machines, refer to [Adjusting Rear Wheel Toe-in \(page 57\)](#).

Adjusting Rear Wheel Toe-in

2-Wheel Drive Machines Only

1. Loosen the jam nuts at both ends of the left and right tie rods.
2. Adjust both tie rods until center-to-center distance at front and back of rear wheels is the same (Figure 65).
3. When rear wheels are adjusted correctly, tighten jam nuts against tie rods.

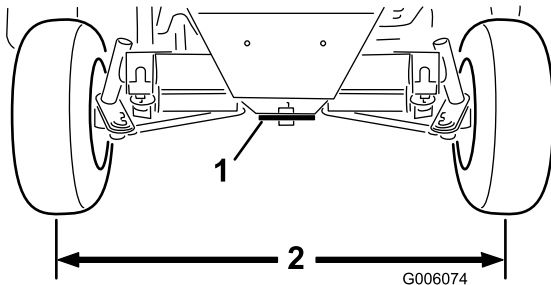


Figure 65

1. Steering plate
2. Same dimension at front and rear of wheels

Adjusting Rear Wheel Toe-in

4-Wheel Drive Machines Only

1. Remove cotter pin and castle nut securing 1 tie-rod ball joint to the mounting bracket on the axle and separate the ball joint from the axle (Figure 66).

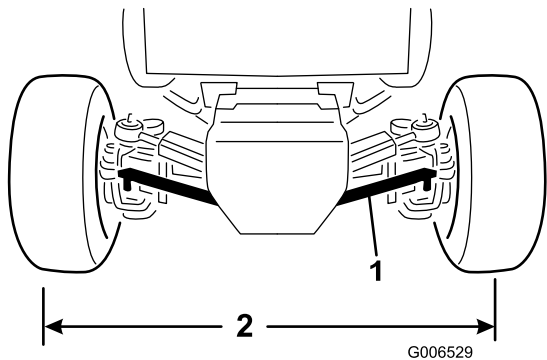


Figure 66

1. Tie rod
2. Same dimension at the front and rear of the wheels

2. Loosen the lock nut and bolt at the tie-rod clamp.
3. Rotate the tie-rod ball joint in or out until the center-to-center distance at front and back of the rear wheels is the same (Figure 66).
4. Install the ball joint to the mounting bracket and check the wheel toe-in.

5. After attaining the desired wheel alignment, assemble ball joint to the mounting bracket with the castle nut and cotter pin.
6. Tighten the locknut and bolt at the tie-rod clamp.

Torquing the Bolts for the Steering-Cylinder Mount

4-Wheel Drive Machines Only

Service Interval: Every 200 hours

1. Move the machine to a level surface, shut off the engine and remove the key from the key switch.
2. Torque the 4 bolts for the steering-cylinder mount (Figure 67) to 65 to 81 N·m (48 to 60 ft·lb).

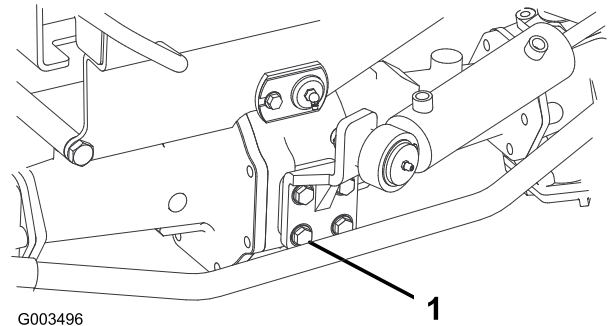


Figure 67

1. Bolt—4 each (steering-cylinder-mount)

Adjusting the Traction Drive for Neutral

If the machine moves when the traction pedal is in the neutral position, adjust the traction cam.

Preparing to Adjust the Traction Drive

Lifting equipment and jack stand capacity: 1900 kg (2 ton) or greater

1. Move the machine to a level surface, shut off the engine, and engage the parking brake.

⚠ WARNING

If the machine is not supported adequately, it may accidentally fall, injuring anyone under the machine.

Raise all 4 wheels off the ground or the machine may move while adjusting the traction drive for neutral.

2. Raise the machine and support it with 4 jack stands of the specified capacity under the frame.
3. Remove the seat and seat plate; refer to [Removing the Control-Panel Plate \(page 51\)](#).

Adjusting the Traction Drive for Neutral

1. Locate the eccentric hex to the right of the hydraulic pump and below the control console ([Figure 68](#)).

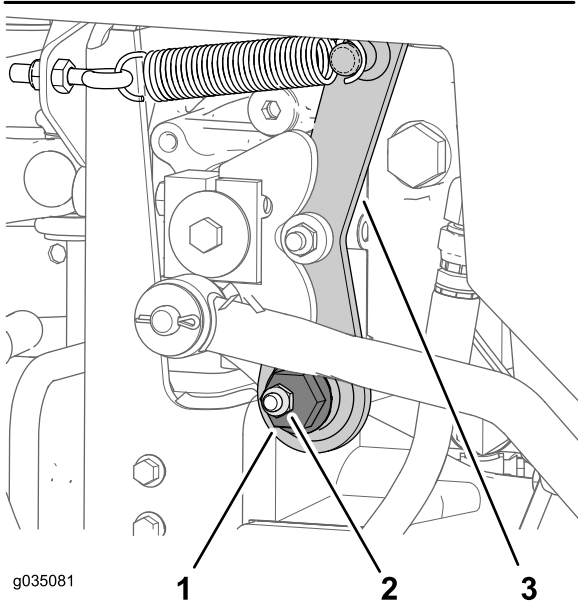
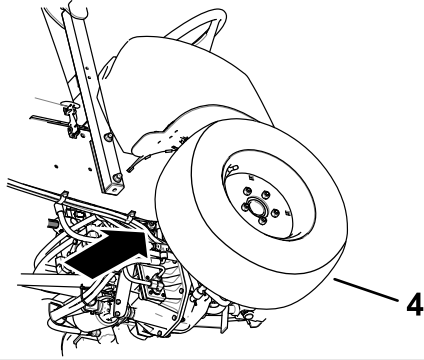


Figure 68

- | | |
|------------------|---------------------|
| 1. Eccentric hex | 3. Neutral arm |
| 2. Retaining nut | 4. Right front tire |

2. Loosen retaining nut until you can move the eccentric hex ([Figure 68](#)).

Note: Ensure that the retaining nut produces enough tension to keep the eccentric hex loosely seated in the neutral arm.

3. Start the engine. If the engine does not start, perform the following:
 - A. Locate the proximity sensor at the right, top side hydraulic pump ([Figure 69](#)).

- B. Verify that the proximity sensor bracket is not bent, and that the light at the back of the sensor is illuminated ([Figure 69](#)).
- C. If the light at the proximity sensor is not illuminated, adjust the sensor position; refer to [Adjusting the Proximity Sensor \(page 59\)](#).

4. Rotate the eccentric hex counterclockwise until the front wheel starts to rotate forward, then rotate the hex eccentric clockwise until the front wheel starts to rotate rearward ([Figure 68](#)).

⚠ WARNING

You must run the engine so that you can perform the final traction adjustment. Contact with hot or moving parts can result in personal injury.

Keep your hands, feet, face, and other body parts away from the muffler, other hot parts of the engine, and other rotating parts.

5. Determine the middle position of the neutral span and tighten the retaining nut.

Note: Perform this traction drive-neutral adjustment at low-speed idle and verify that the neutral adjustment is correct at high engine speed.

6. Tighten the nut securing the adjustment.
7. Shut off the engine.

Adjusting the Proximity Sensor

1. Locate the proximity sensor at the right, top side hydraulic pump (Figure 69).

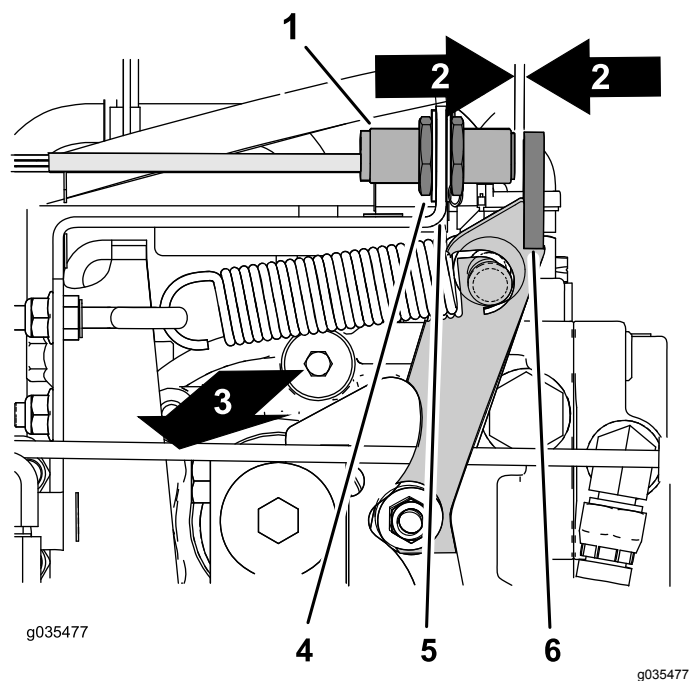
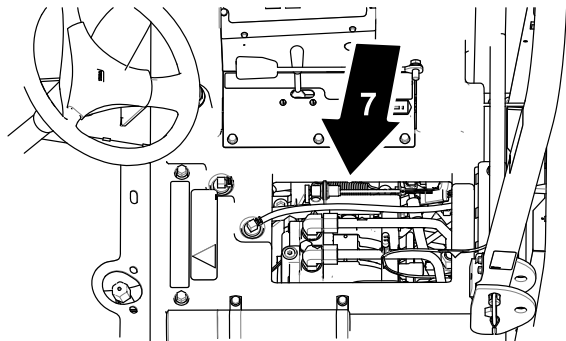


Figure 69

- | | |
|--|-------------------------|
| 1. Proximity sensor | 5. Sensor bracket |
| 2. Gap—2.5 to 3.6 mm (0.10 to 0.14 inch) | 6. Flange (neutral arm) |
| 3. Right side of the machine | 7. Under the seat |
| 4. Jam nut | |

2. Loosen the jam nuts at either side of the sensor bracket (Figure 69).
3. Adjust jam nuts until there is a 2.5 to 3.6 mm (0.10 to 0.14 inch) gap between the end of the proximity sensor and the flange of the neutral arm (Figure 69).
4. Tighten the jam nuts (Figure 69).

Finishing the Traction Drive Adjustment

1. Remove the jack stands and lower the machine to the ground.
2. Install the seat and seat plate; refer to [Installing the Control-Panel Plate \(page 51\)](#).
3. Test drive the machine to ensure that it does not move when the traction pedal is in neutral.

Adjusting the Steering Stops

4-Wheel Drive Machines Only

The rear-axle-steering stops help prevent over-travel of the steering cylinder in case of impact on the rear wheels. Adjust the stops so that there is 0.23 cm (0.090 inch) clearance between the bolt head and the knuckle on the axle when you turn the steering wheel completely to the left or to the right.

1. Thread the bolts in or out until you attain a clearance of 0.23 cm (0.090 inch); refer to [Figure 70](#).

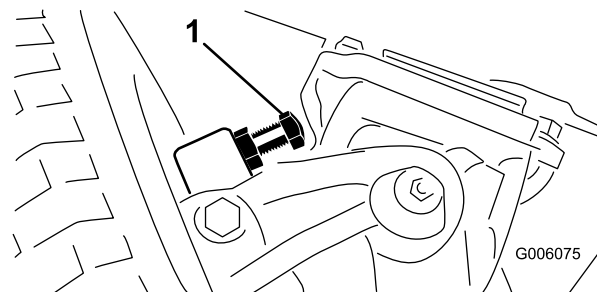


Figure 70

1. Steering stop (right side shown)

2. Loosen the screw on the tie-rod clamp.
3. Rotate the ball joint in or out to adjust the length of the tie rod.
4. Install the ball joint to the mounting bracket and check the wheel toe-in.
5. After attaining the desired adjustment, tighten the screw on the tie-rod clamp and secure the ball joint to the mounting bracket.

Cooling System Maintenance

Cooling System Safety

- Swallowing engine coolant can cause poisoning; keep out of reach from children and pets.
- Discharge of hot, pressurized coolant or touching a hot radiator and surrounding parts can cause severe burns.
 - Always allow the engine to cool at least 15 minutes before removing the radiator cap.
 - Use a rag when opening the radiator cap, and open the cap slowly to allow steam to escape.
- Do not operate the machine without the covers in place.
- Keep your fingers, hands and clothing clear of rotating fan and drive belt.
- Shut off the engine and remove the key before performing maintenance.

Coolant Specification

Cooling system capacity: 7.5 L (8 US qt)

Coolant-type specification:

Recommended Coolant

Note: Coolant must meet or exceed ASTM Standard 3306
Glycol based pre-diluted coolant (50/50 blend)

or

Glycol based coolant mixed with **distilled** water (50/50 blend)

or

Glycol based coolant mixed with good quality water (50/50 blend)

$\text{CaCO}_3 + \text{MgCO}_3 < 170 \text{ ppm}$

Chloride $< 40 \text{ ppm (Cl)}$

Sulfer $< 100 \text{ ppm (SO}_4\text{)}$

Checking the Cooling System and Coolant Level

Service Interval: Before each use or daily Check the level of the coolant level before the engine is first started and daily thereafter.

⚠ WARNING

If the engine has been running, the radiator will be pressurized and the coolant inside will be hot. If you remove the cap, coolant may spray out, causing severe burns.

- **Do not remove the recovery-tank cap to check coolant levels.**
- **Do not remove the recovery-tank cap when the engine is hot. Allow the engine to cool for at least 15 minutes or until the radiator cap is cool enough to touch without burning your hand.**

1. Check the level of the coolant in the expansion tank (Figure 71).

Note: The coolant level should be between the marks on the side of the tank.

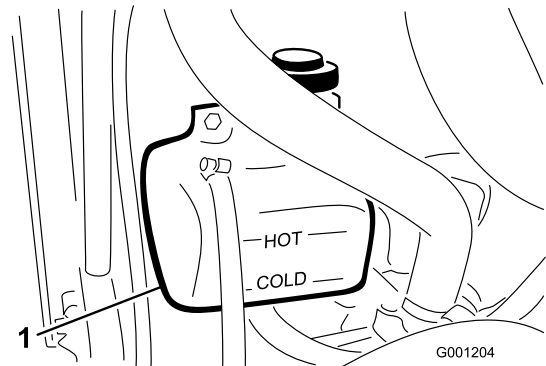


Figure 71

1. Expansion tank

2. If the coolant is low, add the recommended replacement coolant as required. **Do not use water only or alcohol-based coolants. Do not overfill.**
3. Install the expansion-tank cap.

Checking the Hood Screen and Radiator for Debris

Service Interval: Before each use or daily Check a the hood screen and radiator more frequently in extremely dusty and dirty conditions.

To prevent the engine from overheating, keep the hood screen and radiator clean. Check the screen and radiator for buildup of grass, dust, and debris, and if necessary, clean any debris off these parts; refer to [Checking the Hood Screen and Radiator for Debris](#) (page 61).

Cleaning the Hood Screen and Radiator

Service Interval: Every 200 hours—Inspect the cooling-system hoses.

Every 1,500 hours—Replace any moving hoses.

Every 1,500 hours—Flush and replace the cooling-system fluid.

Note: If the PTO shuts off due to high engine temperature, first check the hood screen and radiator for an excessive buildup of debris. Clean the system before operating the machine. Do not shut off the engine immediately; allow the engine to cool by running it without a load.

Clean the radiator as follows:

1. Remove the hood.
2. Working from the fan side of the radiator, blow with low pressure, 172 kPa (25 psi), compressed air (**do not use water**). Repeat this step from the front of the radiator and again from the fan side.
3. After the radiator is thoroughly cleaned, clean out any debris that may have collected in the channel at the radiator base.
4. Clean the screen and install the hood onto the machine.

Brake Maintenance

Adjusting the Service Brakes

Service Interval: After the first 10 hours

After the first 50 hours

Every 50 hours

Adjust the service brakes when there is more than 25 mm (1 inch) of free travel of the brake pedals or when the brakes do not work effectively. Free travel is the distance that the brake pedal moves before you feel braking resistance.

After the first 10 hours of operation, you should need to adjust the brakes only after considerable use thereafter. You can perform these periodic adjustments where the brake cable connects to the bottom of the brake pedals. When the cable is no longer adjustable, you can adjust the star nut on the inside of the brake drum to move the brake shoes outward. However, you will need to adjust the brake cables again to compensate for this adjustment.

1. Release the lock arm from the right-brake pedal so that both pedals operate independent of each other.
2. To reduce the free travel of the brake pedals, loosening the front jam nuts at the threaded end of the brake cable ([Figure 72](#)).

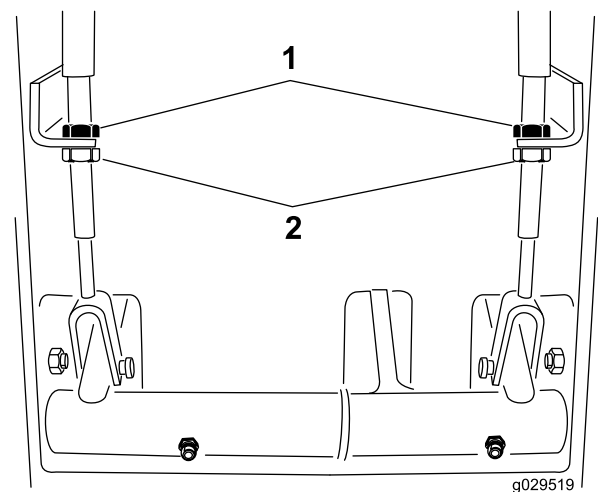


Figure 72

1. Rear jam nuts
2. Front jam nuts

3. Rotate the rear jam nuts to move the cable rearward until the brake pedals have 13 mm to 25 mm (1/2 to 1 inch) of free travel.
4. Tighten the front jam nuts after the free travel of the brake pedals are properly adjusted.

Adjusting the Parking-Brake-Interlock Switch

1. Shut off the engine and remove the key from the key switch.

Note: Do not engage the parking brake.

2. Remove the knob from the parking-brake rod and the screws from the steering-tower cover (Figure 73).

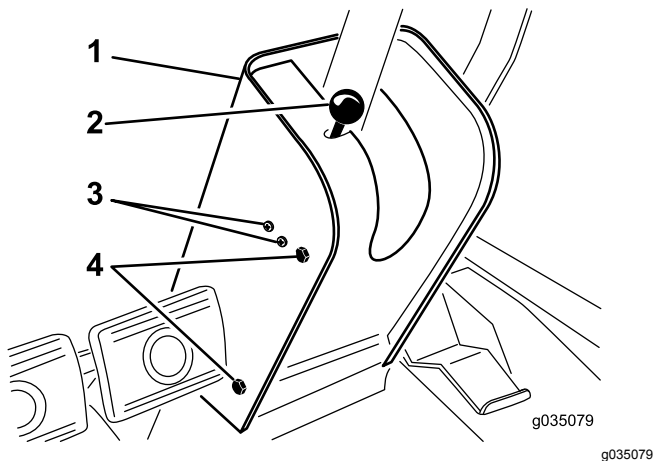


Figure 73

- | | |
|---------------------------|---------------------------|
| 1. Steering-tower cover | 3. Switch-mounting screws |
| 2. Parking-brake knob/rod | 4. Cover-mounting screws |

3. Slide the cover up the steering shaft to expose the parking brake switch (Figure 74).
4. Loosen the screws and nuts that secure the parking brake switch to the left side of the steering tower (Figure 73).
5. Align the paddle of the parking brake rod with the switch plunger (Figure 74)

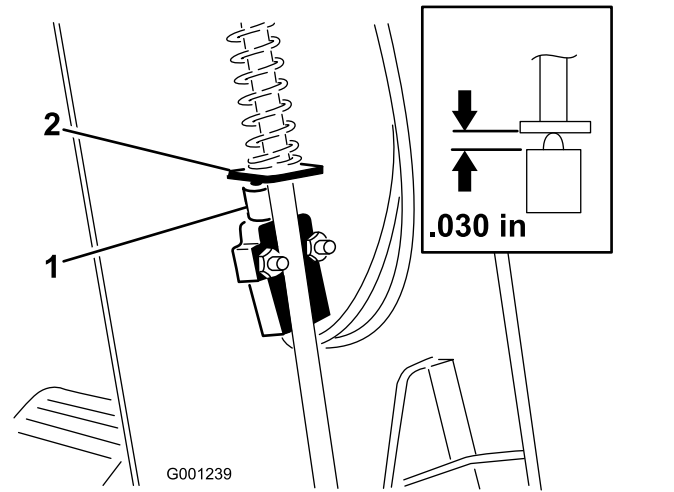


Figure 74

- | | |
|-----------------------------------|-------------------------------|
| 1. Parking-brake interlock switch | 2. Paddle (parking-brake rod) |
|-----------------------------------|-------------------------------|

6. Press down on the parking-brake rod and push up the switch until the compressed length of the switch plunger is 0.7 mm (0.030 inches); refer to Figure 74.

Note: This is the distance between the brake-rod paddle and the switch-plunger housing.

7. Tighten the switch-mounting screws and nuts.
8. With the parking brake set, use a multimeter to measure continuity through the switch; when the position of the switch is correct, you should measure continuity through switch circuit.

Note: If there is no continuity, move the switch down slightly until there is continuity.

9. Check the operation of the parking brake interlock switch as follows:
 - A. Engage the parking brake.
 - B. Press the traction pedal while the engine is running and the PTO switch is in the OFF position; The parking brake interlock switch is operating correctly if the engine shuts off within 2 seconds.

Important: If the engine does not stop, the interlock system is not operating correctly. You must repair the interlock system before operating the machine.

10. Install the steering-tower cover and brake-rod knob.

Belt Maintenance

Checking the Condition of the Alternator Belt

Service Interval: Every 200 hours

Check alternator belt for wear or damage.

Note: Replace the alternator belt if you find it worn or damaged.

Tensioning the Alternator Belt

Service Interval: After the first 10 hours

Every 200 hours

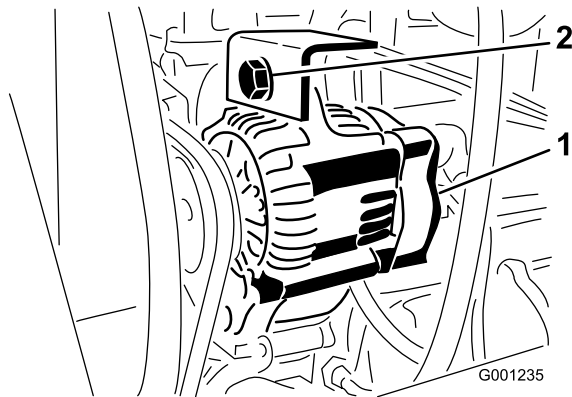


Figure 75

1. Alternator 2. Mounting bolt

1. Apply 4.5 kg (10 lb) of force against the belt at a position midway between the pulleys.
 - If the belt deflects 10 mm (3/8 inch), the belt is properly tensioned.
 - If the belt deflects more than 10 mm (3/8 inch) or less than 10 mm (3/8 inch), proceed to step 2.
2. Loosen the mounting bolt for the alternator (Figure 75)
3. Increase or decrease the tension on the alternator belt and tighten the mounting bolt (Figure 75).
4. Repeat steps 1 through 3 until the belt tension is correct.

Servicing the PTO Belt

Checking the PTO Belt Tension

Service Interval: After the first 10 hours

After the first 50 hours

Every 200 hours

1. Shut the engine off, engage the parking brake, and remove the key from the key switch.
2. Raise the engine hood and allow the engine to cool.
3. Loosen the tensioning-rod jam nut (Figure 76).

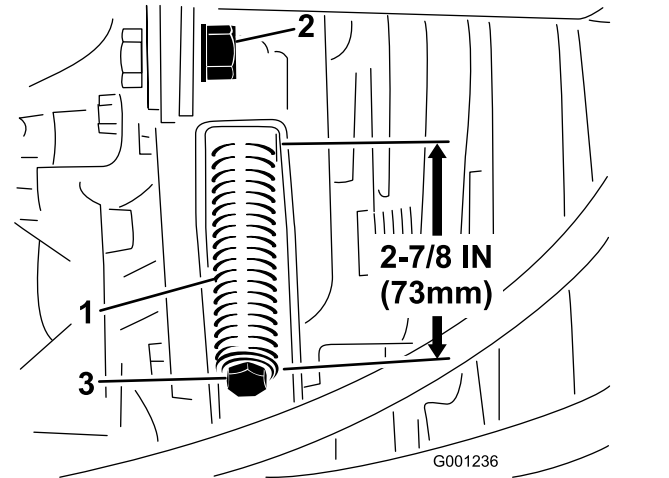


Figure 76

1. Belt-tensioning spring 3. Tension-adjusting bolt
2. Tensioning-rod jam nut

4. Use a 1/2-inch wrench to tighten or loosen the belt-tensioning spring (Figure 76). Adjust spring to a length of 273 mm (7/8 inch).
5. Tighten the jam nut.

Replacing the PTO Belt

1. Park the machine on a level surface, engage the parking brake, lower the cutting deck, shut off the engine, and remove the key from the key switch.
2. Raise the engine hood and allow the engine to cool.
3. Loosen the tensioning-rod jam nut (Figure 76).
4. Using a 1/2-inch wrench, loosen the belt-tensioning spring (Figure 76) all the way.
5. Rotate the PTO pulley toward the engine and remove the belt.
6. Install the new PTO belt and tension the pulley spring to 73 mm (2-7/8 inches) in length (Figure 76).

7. Tighten the jam nut (Figure 76) and close the hood.

Controls System Maintenance

Adjusting the PTO-Clutch Gap

Service Interval: Every 200 hours

1. Shut off the engine, engage the parking brake, and remove the key from the switch.
2. Raise the engine hood and allow the engine to cool.
3. Adjust the air gap so that a 0.4 mm (0.015 inch) feeler gauge slides in between the clutch lining and friction plate with light pressure (Figure 77).

Note: You can decrease the gap by turning the adjusting nut clockwise (Figure 77). The maximum service gap is 0.7 mm (0.030 inch). Adjust all 3 air gaps.

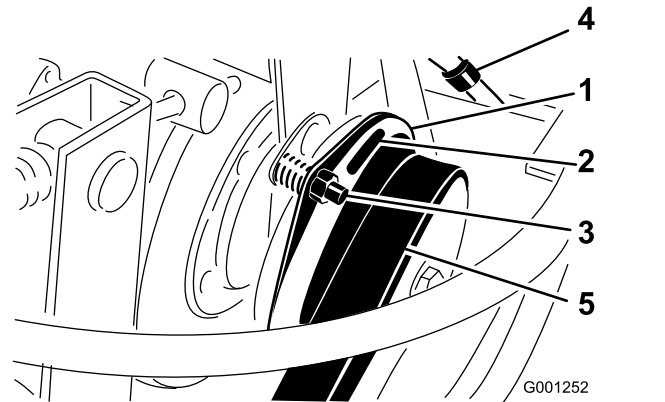


Figure 77

- | | |
|------------------------------------|-------------------------|
| 1. Clutch | 4. Electrical connector |
| 2. 0.4 mm (0.015 inch) air gap (3) | 5. PTO belt |
| 3. Adjusting nut (3) | |

-
4. After all 3 gaps have been set, check all 3 again.

Note: Adjusting 1 gap can alter the other gaps.

Adjusting the Traction Pedal

Adjusting the Traction-Pedal Stop

You can adjust the traction pedal for operator comfort or to reduce the maximum forward speed of the machine.

1. Move the traction pedal fully forward (Figure 78)

Note: The traction pedal should contact the traction-pedal stop before the pump reaches full stroke.

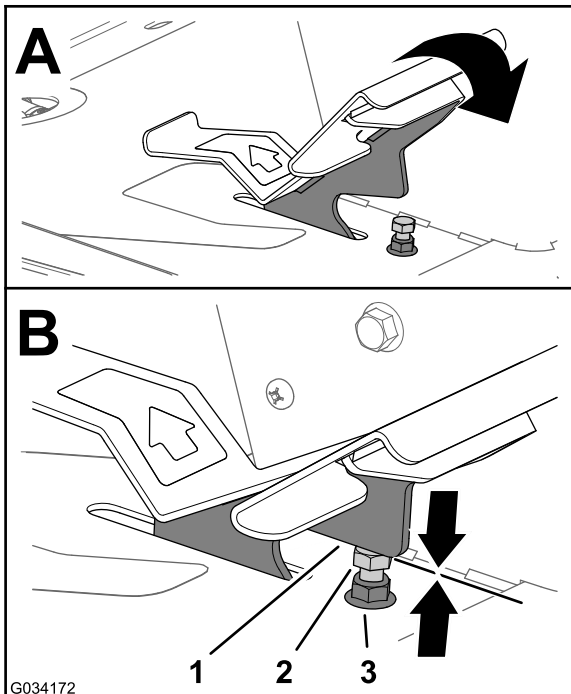


Figure 78

1. Traction pedal
2. Traction-pedal stop
3. Jam nut (top of the footrest plate)

2. If the traction pedal does not contact the traction-pedal stop or if you want to reduce the forward speed of the machine, perform the following:

- A. Hold the traction-pedal stop (Figure 78) with a wrench.
- B. Loosen the jam nut at the bottom of the footrest plate (Figure 79).

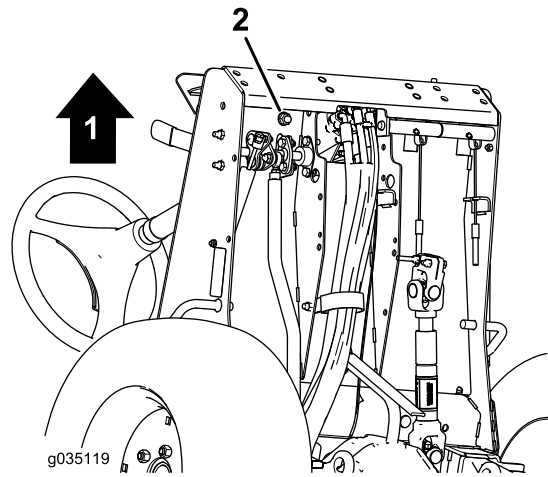


Figure 79

1. Front of the machine
2. Jam nut (bottom of the footrest plate)

- C. Move the traction pedal to the full forward position (Figure 78).
 - D. While holding the traction-pedal stop, adjust the jam nut that is above the footrest plate (Figure 78) until the traction pedal makes contact with the stop.
 - E. Lengthen the traction-pedal stop position by rotating the stop 1 full rotation counterclockwise away from the jam nut above the footrest plate.
- Note:** Shortening the traction-pedal-stop position will increase the forward speed of the machine.
- F. While holding the traction-pedal stop, torque the jam nut at the bottom of the footrest plate (Figure 78 and Figure 79) to 37 to 45 N·m (27 to 33 ft·lb).
 - G. Check that the traction pedal contacts the traction-pedal stop before the pump reaches full stroke.

Note: If the traction pedal does not contact the traction-pedal stop, repeat steps A through G or refer to [Adjusting the Traction-Pedal Stop](#) (page 65).

Adjusting the Traction Rod

If more adjustment is required, adjust the traction rod (Figure 80) as follows:

1. Remove the bolt and nut securing traction rod end to the pedal.
2. Loosen the jam nut that secures the rod end to the traction rod (Figure 80).
3. Rotate the rod until you achieve the desired length.
4. Tighten the jam nut (Figure 80) and secure the rod end to the traction pedal with the bolt and nut removed to lock the angle of the foot pedal.

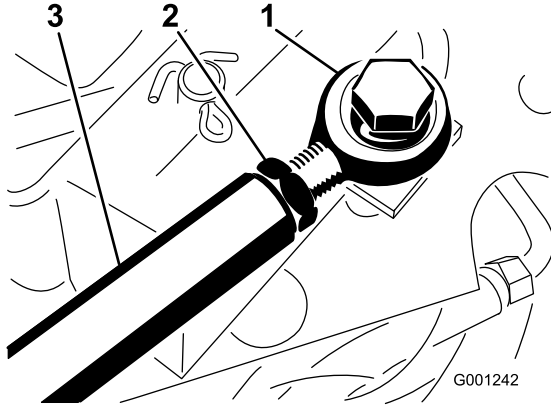


Figure 80

1. Rod end
2. Jam nut
3. Traction rod

Hydraulic System Maintenance

Hydraulic System Safety

- Seek immediate medical attention if fluid is injected into skin. Injected fluid must be surgically removed within a few hours by a doctor.
- Ensure that all hydraulic-fluid hoses and lines are in good condition and all hydraulic connections and fittings are tight before applying pressure to the hydraulic system.
- Keep your body and hands away from pinhole leaks or nozzles that eject high-pressure hydraulic fluid.
- Use cardboard or paper to find hydraulic leaks.
- Safely relieve all pressure in the hydraulic system before performing any work on the hydraulic system.

Hydraulic Fluid Specification

The machine's reservoir is filled at the factory with high quality hydraulic fluid.

Hydraulic system capacity: 5.6 L (6.0 qt)

Hydraulic fluid-type specification:

Toro Premium Transmission/Hydraulic Tractor Fluid
(Available in 5 gallon pails or 55 gallon drums. See parts catalog or Toro distributor for part numbers.)

Alternate fluids: If the Toro fluid is not available, you may use other petroleum-based Universal Tractor Hydraulic Fluids (UTHF) provided that its specifications fall within the listed range for all the following material properties and that it meets industry standards. We do not recommend the use of synthetic fluid. Consult with your lubricant distributor to identify a satisfactory product.

Note: Toro does not assume responsibility for damage caused by improper substitutions, so use products only from reputable manufacturers who will stand behind their recommendation.

Material Properties:

Viscosity, ASTM D445 cSt @ 40°C 55 to 62
cSt @ 100°C 9.1 to 9.8

Viscosity Index ASTM 140 to 152
D2270

Pour Point, ASTM D97 -35°F to -46°F

Industry Specifications:

API GL-4, AGCO Powerfluid 821 XL, Ford New Holland
FNHA-2-C-201.00, Kubota UDT, John Deere J20C,
Vickers 35VQ25, and Volvo WB-101/BM

Note: Many hydraulic fluids are almost colorless, making it difficult to spot leaks. A red dye additive for the hydraulic fluid is available in 20 ml (2/3 fl oz) bottles. A bottle is sufficient for 15 to 22 L (4 to 6 US gallons) of hydraulic fluid. Order Part No. 44-2500 from your authorized Toro distributor.

Servicing the Hydraulic System

Preparing to Service the Hydraulic System

1. Move machine to a level surface and engage the parking brake.
2. Place all controls in the NEUTRAL position and start the engine.
3. Run the engine at lowest possible engine speed to purge the system of air.

Important: Do not run the PTO.

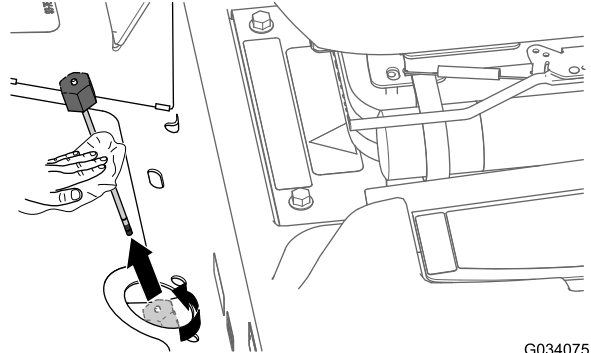
4. Cycle steering wheel several times fully to the left and right, and align the steering wheels straight forward.

Checking the Hydraulic System and Fluid Level

Service Interval: Before each use or daily

Note: The transaxle housing acts as the reservoir for the hydraulic system.

1. Raise the deck to extend the deck-lift cylinders, shut off the engine, and remove the key from the key switch.
2. Loosen dipstick cap (Figure 81) and remove the dipstick from transaxle filler tube and wipe the dipstick with a clean rag.

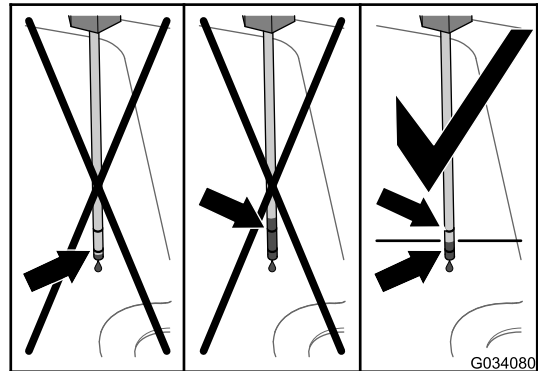


G034075

g034075

Figure 81

3. Insert the dipstick into the fill tube and thread dipstick cap onto the tube.
4. Remove the dipstick and check the fluid level (Figure 82).



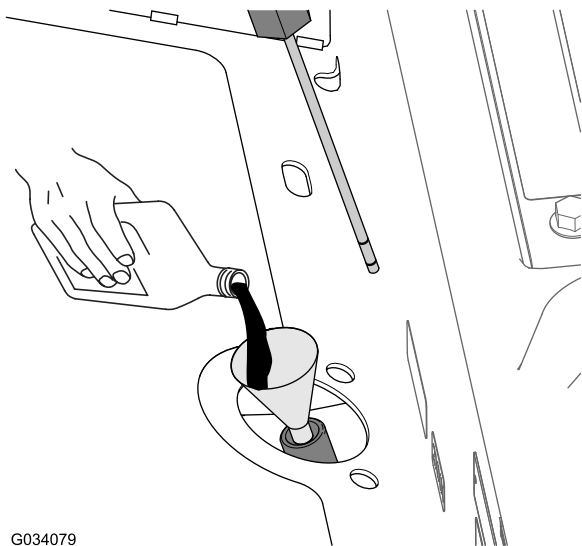
G034080

g034080

Figure 82

5. If the fluid level is below the lower mark of the dipstick, add the specified hydraulic fluid into the fill tube (Figure 83) until fluid level rises between the upper and lower marks when checked with the dipstick (Figure 82).

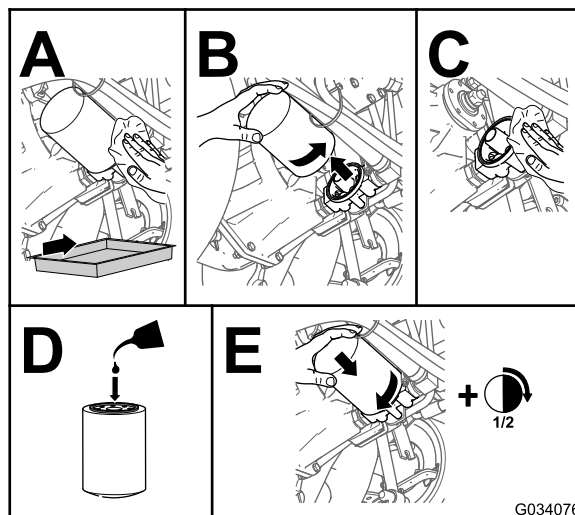
Important: Do not fill the transaxle housing with hydraulic fluid above the upper mark of the dipstick.



G034079

g034079

Figure 83



G034076

g034076

Figure 84

6. Thread the dipstick fill cap onto the filler tube.
Note: Do not tighten the cap with a wrench.
7. Check all hoses and fittings for leaks.

Changing the Hydraulic Fluid And Filter

Service Interval: After the first 10 hours—Change the hydraulic-fluid filter. Do not exceed 10 hours or you will damage the hydraulic system.

Every 200 hours—Change the hydraulic-fluid filter.

Every 1,500 hours—Replace the hydraulic fluid.

Hydraulic fluid capacity: approximately 5.6 L (6 US qt)

1. Lower the deck to the shop floor, shut off the engine, and remove the key from the key switch.
2. Block the 2 rear wheels.
3. Jack up both sides of the front axle and support it with jack stands.
4. Replace the hydraulic filter (Figure 84).

Note: Drain pan capacity: a 5.6 L (6 US qt) capacity or greater

5. Remove jack stands and lower the machine.
6. Add the specified hydraulic fluid into the fill tube (Figure 83) until the fluid level in the transaxle housing (reservoir) shows at the midpoint between the upper and lower marks of the dipstick (Figure 82).

Important: Do not fill the transaxle housing with hydraulic fluid above the upper mark of the dipstick.

7. Start the engine, cycle the steering wheel and deck-lift cylinders, and check for oil leaks. Allow the engine to run for about 5 minutes, then shut it off.
8. After 2 minutes, check the level of the hydraulic fluid; refer to [Checking the Hydraulic System and Fluid Level](#) (page 67).

Storage

Storing the Battery

- Service the battery and cables as follows:
 1. Disconnect the negative terminal first and the positive last.
 2. Clean the battery, terminals, and posts with a wire brush and baking-soda solution.
 3. Coat the cable terminals and battery posts with Grafo 112X skin-over grease (Toro Part No. 505-47) or petroleum jelly to prevent corrosion.
 4. If you plan to store the machine more than 30 days, remove the battery and charge it fully.

Note: Slowly charge the battery for 24 hours every 60 days to prevent lead sulfation of the battery.

Note: Charge the battery in an open, well-ventilated area, away from sparks and flames. Unplug the charger before connecting or disconnecting the battery. Wear protective clothing and use insulated tools.

- Store the battery on the shelf on the machine.
- Leave the cables disconnected if the battery is stored in the machine.
- Store the battery in a cool atmosphere to avoid quick deterioration of the charge in the battery.
- To prevent the battery from freezing, ensure that it is fully charged. The specific gravity of the electrolyte in a fully charged battery is between 1.265 to 1.299.

Preparing the Machine

1. Thoroughly clean the machine, deck and the engine, paying special attention to these areas:
 - Radiator and radiator screen
 - Underneath the deck
 - Under the deck belt covers
 - PTO shaft assembly
 - All grease fittings and pivot points
 - Remove the control panel and clean out inside of the control box
 - Beneath the seat plate and top of the transmission
2. Check and adjust the air pressure in the tires; refer to [9 Checking the Air Pressure in the Tires \(page 17\)](#)

3. Remove, sharpen, and balance the mower blades; refer to the *Operator's Manual* for your mower deck.
4. Check for loose fasteners and tighten them as necessary.
5. Lubricate all grease fittings and apply oil to pivot points and the transmission bypass-valve pins. Wipe clean any excess lubricant.
6. Lightly sand and use touch-up paint on painted areas that are scratched, chipped or rusted. Repair any dents in the metal body.

Preparing the Engine

1. Change the engine oil and oil filter; refer to [Changing the Engine Oil And Filter \(page 47\)](#).
2. Start the engine and run it at idle speed for 2 minutes.
3. Shut off the engine.
4. Drain the fuel from the fuel tank, fuel lines, pump, filter, and separator.
5. Flush the fuel tank with clean diesel fuel and connect all fuel lines.
6. Thoroughly clean and service the air-cleaner assembly; refer to [Servicing the Air Cleaner \(page 45\)](#).
7. Seal the air-cleaner inlet and the exhaust outlet with weatherproof masking tape.
8. Secure all fuel-system fittings.
9. Check the anti-freeze protection level of the cooling system and adjust the concentration of the coolant as needed for expected minimum temperature in your area.
10. Check the oil-filler cap and fuel-tank cap to ensure that they are installed securely.

European Privacy Notice

The Information Toro Collects

Toro Warranty Company (Toro) respects your privacy. In order to process your warranty claim and contact you in the event of a product recall, we ask you to share certain personal information with us, either directly or through your local Toro company or dealer.

The Toro warranty system is hosted on servers located within the United States where privacy law may not provide the same protection as applies in your country.

BY SHARING YOUR PERSONAL INFORMATION WITH US, YOU ARE CONSENTING TO THE PROCESSING OF YOUR PERSONAL INFORMATION AS DESCRIBED IN THIS PRIVACY NOTICE.

The Way Toro Uses Information

Toro may use your personal information to process warranty claims, to contact you in the event of a product recall and for any other purpose which we tell you about. Toro may share your information with Toro's affiliates, dealers or other business partners in connection with any of these activities. We will not sell your personal information to any other company. We reserve the right to disclose personal information in order to comply with applicable laws and with requests by the appropriate authorities, to operate our systems properly or for our own protection or that of other users.

Retention of your Personal Information

We will keep your personal information as long as we need it for the purposes for which it was originally collected or for other legitimate purposes (such as regulatory compliance), or as required by applicable law.

Toro's Commitment to Security of Your Personal Information

We take reasonable precautions in order to protect the security of your personal information. We also take steps to maintain the accuracy and current status of personal information.

Access and Correction of your Personal Information

If you would like to review or correct your personal information, please contact us by email at legal@toro.com.

Australian Consumer Law

Australian customers will find details relating to the Australian Consumer Law either inside the box or at your local Toro Dealer.

California Proposition 65 Warning Information

What is this warning?

You may see a product for sale that has a warning label like the following:



WARNING: Cancer and Reproductive Harm—www.p65Warnings.ca.gov.

What is Prop 65?

Prop 65 applies to any company operating in California, selling products in California, or manufacturing products that may be sold in or brought into California. It mandates that the Governor of California maintain and publish a list of chemicals known to cause cancer, birth defects, and/or other reproductive harm. The list, which is updated annually, includes hundreds of chemicals found in many everyday items. The purpose of Prop 65 is to inform the public about exposure to these chemicals.

Prop 65 does not ban the sale of products containing these chemicals but instead requires warnings on any product, product packaging, or literature with the product. Moreover, a Prop 65 warning does not mean that a product is in violation of any product safety standards or requirements. In fact, the California government has clarified that a Prop 65 warning "is not the same as a regulatory decision that a product is 'safe' or 'unsafe.'" Many of these chemicals have been used in everyday products for years without documented harm. For more information, go to <https://oag.ca.gov/prop65/faqs-view-all>.

A Prop 65 warning means that a company has either (1) evaluated the exposure and has concluded that it exceeds the "no significant risk level"; or (2) has chosen to provide a warning based on its understanding about the presence of a listed chemical without attempting to evaluate the exposure.

Does this law apply everywhere?

Prop 65 warnings are required under California law only. These warnings are seen throughout California in a wide range of settings, including but not limited to restaurants, grocery stores, hotels, schools, and hospitals, and on a wide variety of products. Additionally, some online and mail order retailers provide Prop 65 warnings on their websites or in catalogs.

How do the California warnings compare to federal limits?

Prop 65 standards are often more stringent than federal and international standards. There are various substances that require a Prop 65 warning at levels that are far lower than federal action limits. For example, the Prop 65 standard for warnings for lead is 0.5 µg/day, which is well below the federal and international standards.

Why don't all similar products carry the warning?

- Products sold in California require Prop 65 labelling while similar products sold elsewhere do not.
- A company involved in a Prop 65 lawsuit reaching a settlement may be required to use Prop 65 warnings for its products, but other companies making similar products may have no such requirement.
- The enforcement of Prop 65 is inconsistent.
- Companies may elect not to provide warnings because they conclude that they are not required to do so under Prop 65; a lack of warnings for a product does not mean that the product is free of listed chemicals at similar levels.

Why does Toro include this warning?

Toro has chosen to provide consumers with as much information as possible so that they can make informed decisions about the products they buy and use. Toro provides warnings in certain cases based on its knowledge of the presence of one or more listed chemicals without evaluating the level of exposure, as not all the listed chemicals provide exposure limit requirements. While the exposure from Toro products may be negligible or well within the "no significant risk" range, out of an abundance of caution, Toro has elected to provide the Prop 65 warnings. Moreover, if Toro does not provide these warnings, it could be sued by the State of California or by private parties seeking to enforce Prop 65 and subject to substantial penalties.



The Toro Warranty

A Two-Year Limited Warranty

Conditions and Products Covered

The Toro Company and its affiliate, Toro Warranty Company, pursuant to an agreement between them, jointly warrant your Toro Commercial product ("Product") to be free from defects in materials or workmanship for two years or 1500 operational hours*, whichever occurs first. This warranty is applicable to all products with the exception of Aerators (refer to separate warranty statements for these products). Where a warrantable condition exists, we will repair the Product at no cost to you including diagnostics, labor, parts, and transportation. This warranty begins on the date the Product is delivered to the original retail purchaser.

* Product equipped with an hour meter.

Instructions for Obtaining Warranty Service

You are responsible for notifying the Commercial Products Distributor or Authorized Commercial Products Dealer from whom you purchased the Product as soon as you believe a warrantable condition exists. If you need help locating a Commercial Products Distributor or Authorized Dealer, or if you have questions regarding your warranty rights or responsibilities, you may contact us at:

Toro Commercial Products Service Department
Toro Warranty Company
8111 Lyndale Avenue South
Bloomington, MN 55420-1196
952-888-8801 or 800-952-2740
E-mail: commercial.warranty@toro.com

Owner Responsibilities

As the Product owner, you are responsible for required maintenance and adjustments stated in your *Operator's Manual*. Failure to perform required maintenance and adjustments can be grounds for disallowing a warranty claim.

Items and Conditions Not Covered

Not all product failures or malfunctions that occur during the warranty period are defects in materials or workmanship. This warranty does not cover the following:

- Product failures which result from the use of non-Toro replacement parts, or from installation and use of add-on, or modified non-Toro branded accessories and products. A separate warranty may be provided by the manufacturer of these items.
- Product failures which result from failure to perform recommended maintenance and/or adjustments. Failure to properly maintain your Toro product per the Recommended Maintenance listed in the *Operator's Manual* can result in claims for warranty being denied.
- Product failures which result from operating the Product in an abusive, negligent, or reckless manner.
- Parts subject to consumption through use unless found to be defective. Examples of parts which are consumed, or used up, during normal Product operation include, but are not limited to, brake pads and linings, clutch linings, blades, reels, rollers and bearings (sealed or greasable), bed knives, spark plugs, castor wheels and bearings, tires, filters, belts, and certain sprayer components such as diaphragms, nozzles, and check valves, etc.
- Failures caused by outside influence. Conditions considered to be outside influence include, but are not limited to, weather, storage practices, contamination, use of unapproved fuels, coolants, lubricants, additives, fertilizers, water, or chemicals, etc.
- Failure or performance issues due to the use of fuels (e.g. gasoline, diesel, or biodiesel) that do not conform to their respective industry standards.

Countries Other than the United States or Canada

Customers who have purchased Toro products exported from the United States or Canada should contact their Toro Distributor (Dealer) to obtain guarantee policies for your country, province, or state. If for any reason you are dissatisfied with your Distributor's service or have difficulty obtaining guarantee information, contact the Toro importer.

- Normal noise, vibration, wear and tear, and deterioration.
- Normal "wear and tear" includes, but is not limited to, damage to seats due to wear or abrasion, worn painted surfaces, scratched decals or windows, etc.

Parts

Parts scheduled for replacement as required maintenance are warranted for the period of time up to the scheduled replacement time for that part. Parts replaced under this warranty are covered for the duration of the original product warranty and become the property of Toro. Toro will make the final decision whether to repair any existing part or assembly or replace it. Toro may use remanufactured parts for warranty repairs.

Deep Cycle and Lithium-Ion Battery Warranty:

Deep cycle and Lithium-Ion batteries have a specified total number of kilowatt-hours they can deliver during their lifetime. Operating, recharging, and maintenance techniques can extend or reduce total battery life. As the batteries in this product are consumed, the amount of useful work between charging intervals will slowly decrease until the battery is completely worn out. Replacement of worn out batteries, due to normal consumption, is the responsibility of the product owner. Battery replacement may be required during the normal product warranty period at owner's expense. Note: (Lithium-Ion battery only): A Lithium-Ion battery has a part only prorated warranty beginning year 3 through year 5 based on the time in service and kilowatt hours used. Refer to the *Operator's Manual* for additional information.

Maintenance is at Owner's Expense

Engine tune-up, lubrication, cleaning and polishing, replacement of filters, coolant, and completing recommended maintenance are some of the normal services Toro products require that are at the owner's expense.

General Conditions

Repair by an Authorized Toro Distributor or Dealer is your sole remedy under this warranty.

Neither The Toro Company nor Toro Warranty Company is liable for indirect, incidental or consequential damages in connection with the use of the Toro Products covered by this warranty, including any cost or expense of providing substitute equipment or service during reasonable periods of malfunction or non-use pending completion of repairs under this warranty. Except for the Emissions warranty referenced below, if applicable, there is no other express warranty. All implied warranties of merchantability and fitness for use are limited to the duration of this express warranty.

Some states do not allow exclusions of incidental or consequential damages, or limitations on how long an implied warranty lasts, so the above exclusions and limitations may not apply to you. This warranty gives you specific legal rights, and you may also have other rights which vary from state to state.

Note regarding engine warranty:

The Emissions Control System on your Product may be covered by a separate warranty meeting requirements established by the U.S. Environmental Protection Agency (EPA) and/or the California Air Resources Board (CARB). The hour limitations set forth above do not apply to the Emissions Control System Warranty. Refer to the Engine Emission Control Warranty Statement supplied with your product or contained in the engine manufacturer's documentation for details.