



Count on it.

Parts Catalog

**Spreader Attachment
Stand-on Aerator**

Model No. 33525—Serial No. 400000000 and Up



Ordering Replacement Parts

To order replacement parts, please supply the part number, the quantity, and the description of each part desired.

Understanding Reference Numbers

Each identified part in an illustration has a reference number. The reference number for a part also appears in the parts list, along with other information about the part.

This catalog uses two special reference number formats, one to indicate parts in a service assembly and another to indicate the quantity of a given part in an illustration.

Service Assembly Reference Numbers

Parts in service assemblies have reference numbers in the form a:b. The a represents the reference number of the entire service assembly and the b represents a sequential number unique to each part within the service assembly.

For example, a wheel assembly might be identified by reference number 6, the tire by 6:1, the valve by 6:2, and the wheel by 6:3. When you order the assembly identified by reference number 6, you receive all parts identified by reference numbers 6:1, 6:2, and 6:3. However, you may also order any part individually. Reference numbers of this type appear in illustration and in parts lists.

Reference Numbers Indicating Quantity

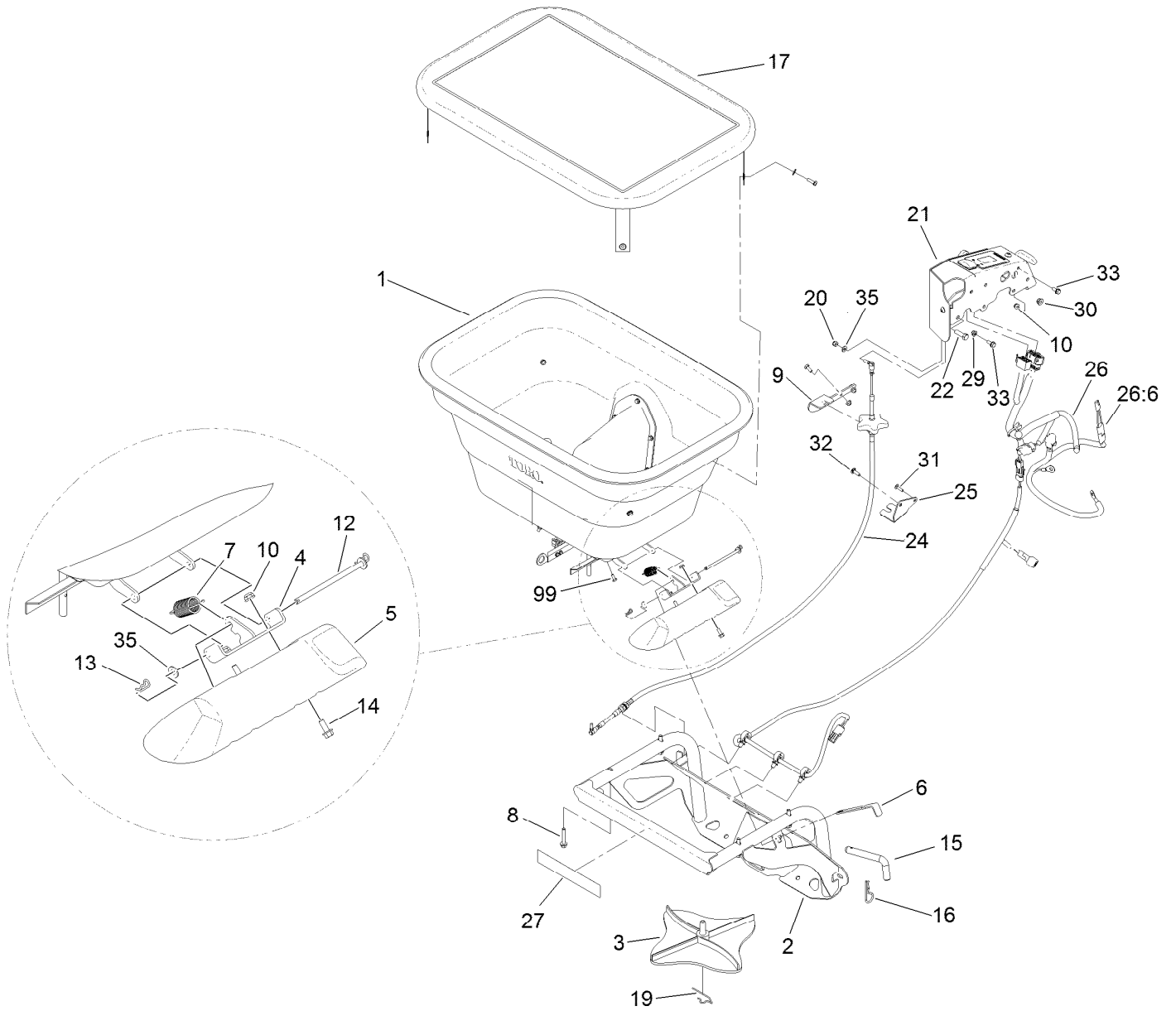
In an illustration, if a reference number indicates more than one part, the reference number has the form nX y. The n represents the quantity of the part, the X is the multiplication symbol, and the y represents the reference number.

For example, in an illustration, the reference number 2X 37 means that two of the parts identified by reference number 37 are indicated.

Contents

Spreader Hopper and Frame Assembly 4
Spreader Hopper Assembly 6
Spreader Controller Assembly 7

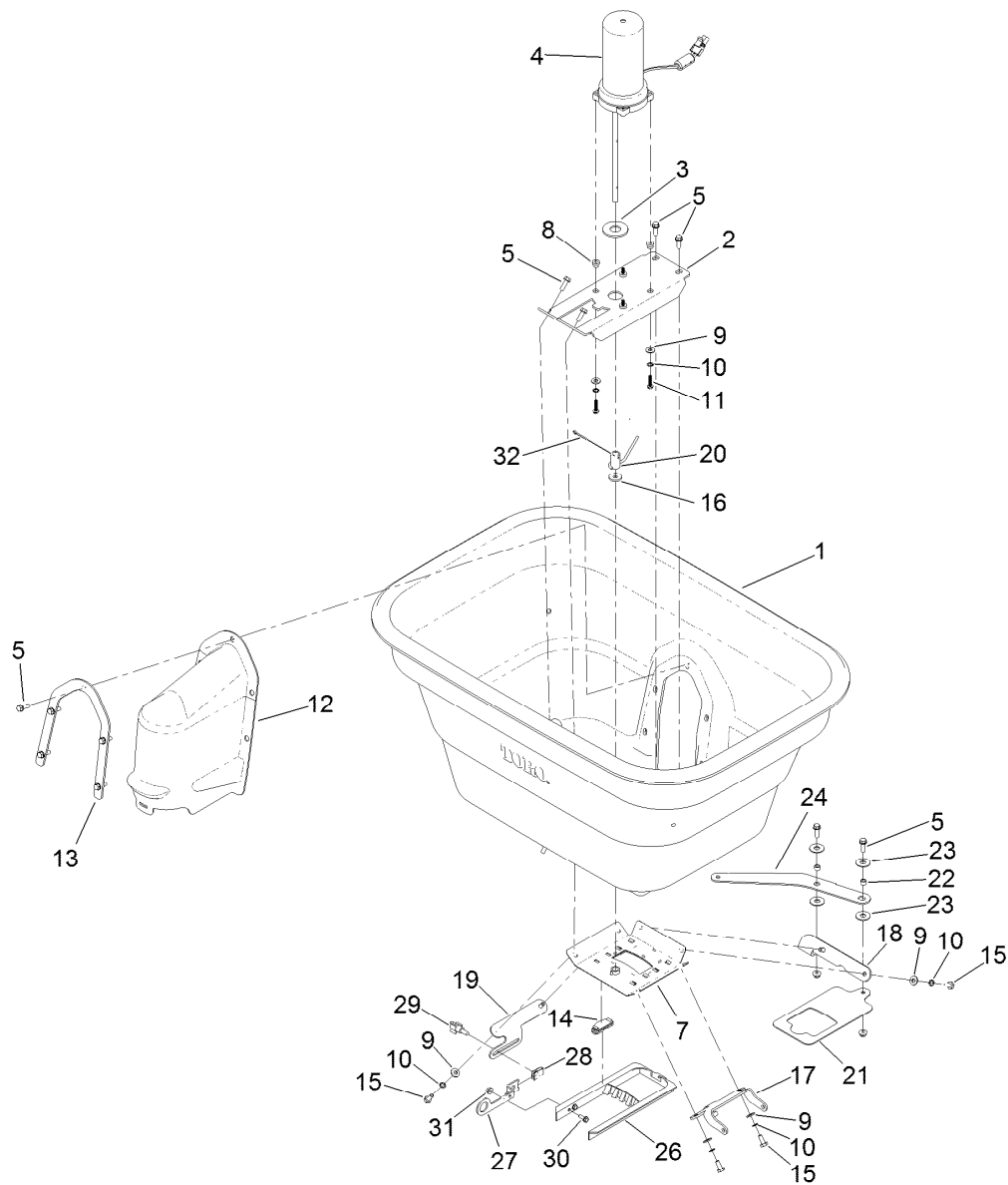
Spreader Hopper and Frame Assembly



Spreader Hopper and Frame Assembly (continued)

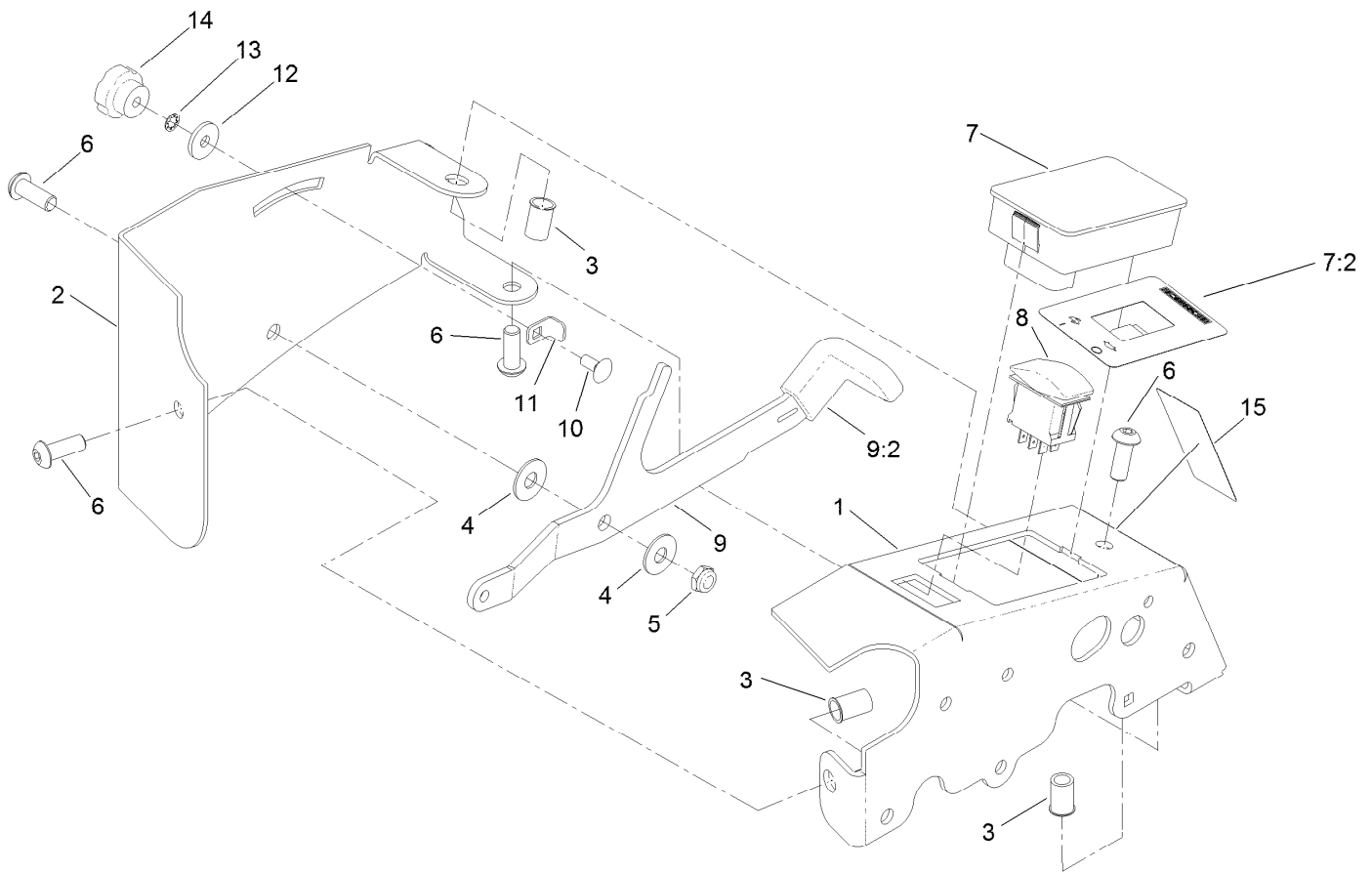
<i>Ref.</i>	<i>Part Number</i>	<i>Qty.</i>	<i>Description</i>	<i>Ref.</i>	<i>Part Number</i>	<i>Qty.</i>	<i>Description</i>
1		1	Spreader Hopper ASM ●	19	126-1246	1	Clip-Spinner
2	135-0193-03	1	Spreader Hopper Frame ASM	20	3296-3	2	Nut-Lock
3	126-0858	1	Spinner-Spreader	21		1	Spreader Controller ASM ●
4	135-1514-03	1	Bracket-Deflector	22	323-7	1	Screw-HH
5	126-8623	1	Deflector	24	135-0841	1	Cable-Push, Pull
6	126-8625	1	Strap-Engagement	25	135-0857-03	1	Bracket-Cable
7	92-7305	1	Spring-Extension	26	135-0700	1	Harness
8	94-5780	4	Screw-HWH	26:6	135-0878	1	Connector
9	126-8634-03	1	Bracket-Cable	27	126-4994	1	Decal-Down, Tie
10	104-7201	2	Nut-HF	29	104-8300	1	Nut-HF, NI
12	126-8636	1	Pin-Pivot	30	104-8301	2	Nut-HF, NI
13	1-806003	2	Pin-Cotter	31	3229-2	1	Screw-CARR
14	126-1592	2	Screw-Head, Flange	32	3230-22	1	Screw-CARR
15	126-8637	1	Pin-Hitch	33	3234-47	3	Screw-HHF
16	3290-256	1	Pin-Hair	35	3256-22	4	Washer-Flat
17	126-2815	1	Cover-Hopper	99	104-7201	7	Nut-HF
				99	321-3	3	Screw-HH

● Not serviced separately



Spreader Hopper Assembly

Ref.	Part Number	Qty.	Description	Ref.	Part Number	Qty.	Description
1	135-1560	1	Hopper-Spreader	17	126-8622-03	1	Mount-Deflector
2	126-8616-03	1	Mount-Motor	18	135-0697-03	1	Mount-Gate, Pivot
3	83-2400	1	Spacer	19	135-0701-03	1	Mount-Gate, Pivot
4	126-0379	1	Motor-Spreader	20	135-0714	1	Weld-Agitator
5	32105-15	12	Screw-HWH	21	135-0696-03	1	Gate-Spreader, Seed
7	126-8620	1	Gate-Bearing	22	126-3684	2	Spacer
8	126-6190	4	Spacer-Flanged	23	93-1633	4	Washer
9	3256-22	10	Washer-Flat	24	135-0698-03	1	Arm-Engagement
10	363-8641	10	Washer-Lock, Int	26	126-0991	1	Diffuser
11	739001	4	Screw-SHWH	27	135-0702-03	1	Bracket-Accuway, Slide
12	126-1348	1	Cover-Motor	28	107069	1	Clip
13	126-8621-03	1	Support-Cover	29	233-70	1	Knob-Star, Three
14	126-0990	4	Guide-Rate, Gate	30	32105-23	2	Screw
15	321-3	6	Screw-HH	31	32128-17	2	Nut-Lock, Flange
16	126-1252	1	Washer-Felt	32	3272-7	1	Pin-Cotter



Spreader Controller Assembly

<i>Ref.</i>	<i>Part Number</i>	<i>Qty.</i>	<i>Description</i>	<i>Ref.</i>	<i>Part Number</i>	<i>Qty.</i>	<i>Description</i>
1	135-0735-03	1	Bracket-Mount	8	100-1535	1	Switch, (On)-Off-(On)
2	135-0736-03	1	Cover-Controller, Spreader	9	135-1389	1	Handle
3	32148-10	3	Insert-Nut	9:2	135-0858	1	Grip-Control, Lever
4	93-1633	2	Washer	10	3229-11	1	Screw-CARR
5	3296-59	1	Nut-Lock, NI	11	135-0800	1	Bracket-Gate, Set
6	3274-94	4	Screw-HSBH	12	66-2921	1	Washer-Friction
7	135-1872	1	Spreader Control Module ASM	13	363-8641	1	Washer-Lock, Int
7:2	135-0739	1	Decal-Speed, Impeller	14	233-67	1	Knob-Chute
				15	135-0990	1	Decal-Control, Spread



Count on it.