



# 36in (92cm) Mid-Size Flail Attachment

Model No. 02720—Serial No. 312000001 and Up

## Setup Instructions

### These instructions are for dealers only.

These instructions are for a dealer to install a flail attachment (Model 02720) to a Mid-Size Power Unit (Model 30069 or 31914).

#### **▲ WARNING**

If you must perform any maintenance while the engine is running, keep your hands, feet, clothing, and parts of your body away from the cutting unit, exhaust components and moving parts.

**Important:** Read and understand these assembly instructions before proceeding. Refer to the *Parts Catalog* and *Operator's Manual* for the machine to determine which of these parts are to be fitted.

**Important:** Ensure that all lifting equipment is in good condition and has a safe and adequate capacity. Always seek assistance when lifting awkward or heavy loads.

**Important:** Torque all fasteners to the specified torque settings. Do not drill, cut or alter the parts in any way.

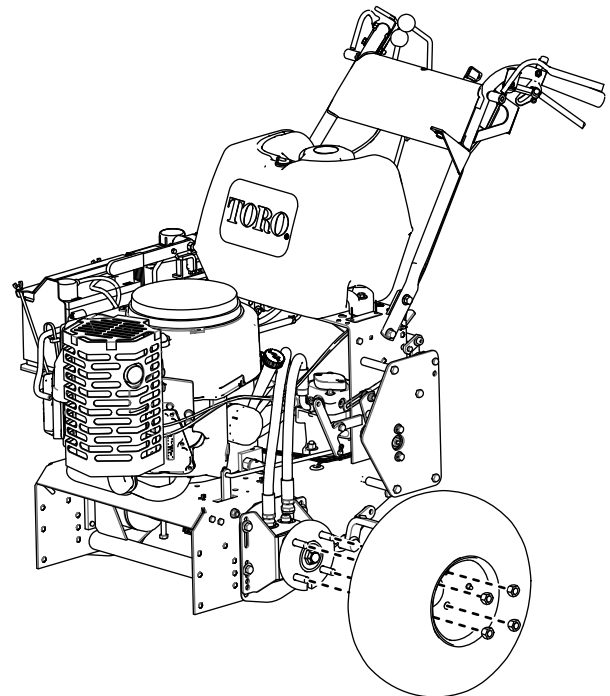
# 1

## Preparing the Machine

No Parts Required

### Procedure

1. Park the machine on a level surface and engage the parking brake.
2. Shut off the engine, remove the key, and wait for the engine to cool.
3. Raise and support the traction unit.
4. Remove the 4 lug nuts securing both wheels to the traction unit (Figure 1).



**Figure 1**  
Left side shown

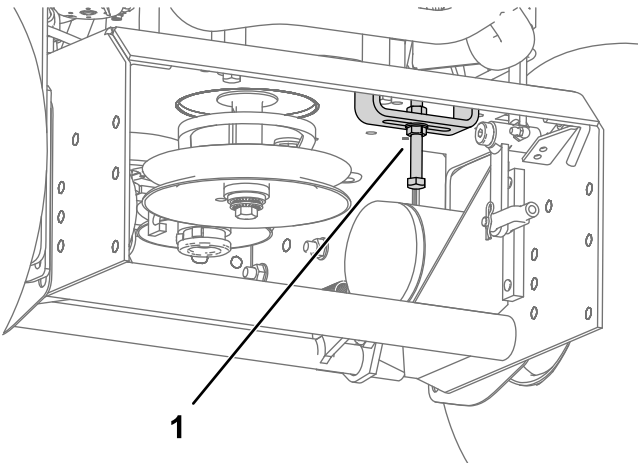
g237244

5. Remove the wheels (Figure 1).



- Remove the belt guide and its hardware from the traction unit.

**Note:** Retain removed parts for future use with a rotary cutting unit.

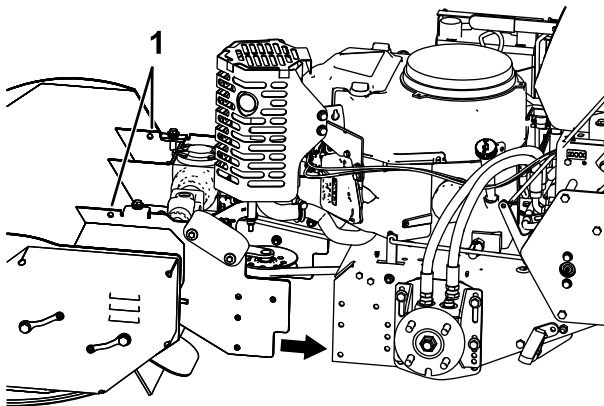


**Figure 2**

g243134

- Belt guide

- Remove the top cover on the flail and the PTO engagement linkage rod before lifting and moving the flail into position against the power unit (Figure 3).



**Figure 3**

g243156

- Lift points

**Note:** Retain all removed parts for later installation.

# 2

## Installing the Attachment

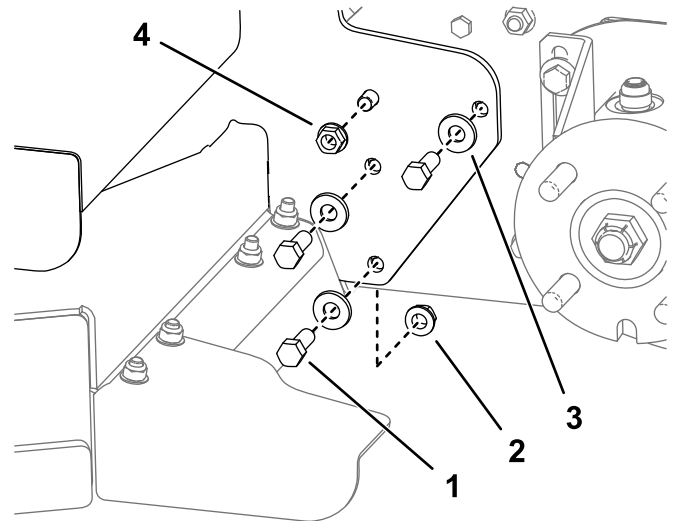
**Parts needed for this procedure:**

8	Bolt (3/8 x 1 inch)
8	Curved washer
8	Flange nut (3/8 inch)

### Procedure

- Install 8 bolts (3/8 x 1 inch), curved washers, and flange nuts to secure the rotary cutting deck to the power unit as shown in Figure 4.

**Important:** Ensure that the engine deck is parallel to the flail +/- 0.5 degrees before tightening the fixing bolts.



**Figure 4**

g237289

- |                          |                      |
|--------------------------|----------------------|
| 1. Bolt (3/8 x 1 inch)   | 3. Curved washer     |
| 2. Flange nut (3/8 inch) | 4. Reversed hardware |

**Note:** Install the bolts and washers together on the same side of the frame. The reversed hardware installs with the bolt end and nut facing outwards.

- Torque the bolts to 30 to 35 ft-lb (40 to 47 N·m).
- Screw the PTO engagement linkage rod into the power unit bell-crank yoke and then connect the other end to the assist arm and secure it with the hairpin cotter (Figure 5).

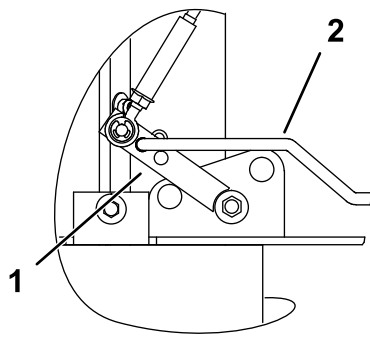


Figure 5

g243251

1. Bell-crank yoke
2. PTO engagement linkage

4. Adjust the PTO engagement as directed in the Adjusting the PTO Engagement Linkage section in the traction unit *Operator's Manual*.
5. Check the adjustment of the PTO safety switch as directed in the Adjusting the Mower Belt Tension section in the traction unit *Operator's Manual*.
6. Check the rotor drive belt routing (Figure 6); refer to the Replacing the Rotor Drive Belt Tension section in the traction unit *Operator's Manual* to adjust the drive belt.

**Important:** Ensure that the belt is on the correct side of the belt guide under the engine frame and adjust the belt guide.

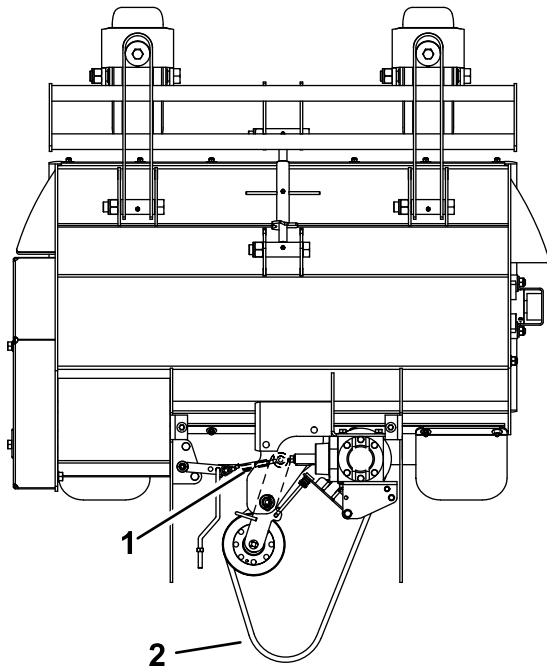


Figure 6  
PTO engaged

g243250

1. Belt adjuster
2. Route the belt around the engine drive pulley.

7. Check the height setting of the power unit rear axle and set to the highest height of cut; refer to the Adjusting the Height of Cut section in the section of the *Operator's Manual*.

# 3

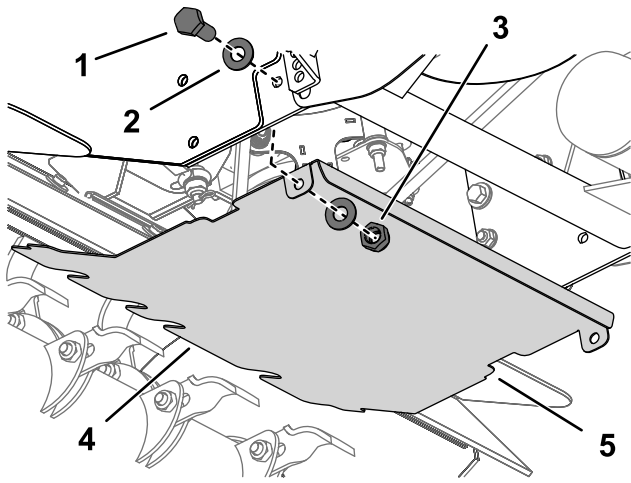
## Installing the Guards

### Parts needed for this procedure:

1	Center discharge guard
3	Protection strip
2	Bolt (M8 x 25 mm)
4	Washer (M8-17)
2	Locknut (M8)
1	Drive pulley guard
2	Carriage bolt (M10 x 25 mm)
2	Heavy washer (M10)
2	Spring washer (M10)
2	Nut (M10)
1	Underside guard
1	Drag shield

### Procedure

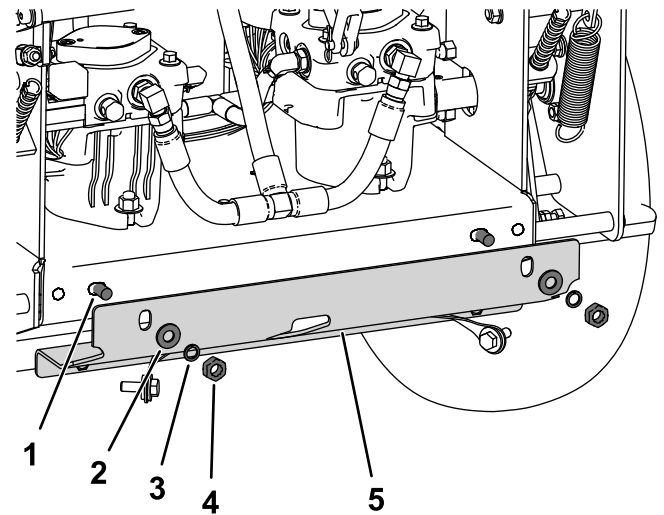
1. Install the 3 protection strip sections to the front edge of the guard to prevent vibration (Figure 7).
2. Install the center discharge guard beneath the machine between the engine frame and the cutter deck.



**Figure 7**

g243198

- |                                    |                                      |
|------------------------------------|--------------------------------------|
| 1. Bolt (M8 x 25 mm)               | 4. Protection strips (in 3 sections) |
| 2. Washer (M8-17)                  | 5. Center discharge guard            |
| 3. Washer (M8-17) and locknut (M8) |                                      |



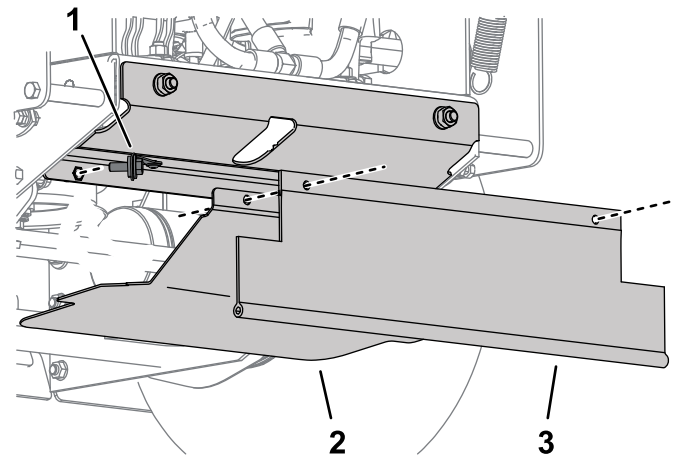
**Figure 8**

g237375

- |                                |                       |
|--------------------------------|-----------------------|
| 1. Carriage bolt (M10 x 25 mm) | 4. Nut (M10)          |
| 2. Heavy washer (M10)          | 5. Drive pulley guard |
| 3. Spring washer               |                       |

- A. Remove the center nut, bolt and washers from the center fixing on the deck (Figure 7).
  - B. Install the guard to the traction unit using 2 bolts (M8 x 25 mm), 4 washers (M8-17), and 2 locknuts (M8) in the lower hole on the engine frame (Figure 7).
  - C. Secure the front of the guard to the deck using the center bolt, washer, and nut you removed previously (Figure 7).
3. Refer to the Adjusting the Height of Cut section in the *Operator's Manual* and check the height setting of the rear axle depending on what height of cut is required.
  4. Install the traction wheels to the hubs and secure with the drive wheel lug nuts; torque the lug nuts to 85 to 90 ft-lb (122 to 129 N·m).
  5. Lower the unit to the ground.
  6. Center the drive pulley guard on the rear of the engine frame and install it with 2 carriage bolts (M10 x 25 mm), heavy washers (M10), spring washers, and nuts (M10) as shown in Figure 8.

7. Test fit the underside guard and adjust the position of the drive pulley guard if necessary (Figure 9).
8. Install the underside guard and drag shield to the drive pulley guard and secure them with the bolts captured in the lanyards on the drive pulley guard (Figure 9).



**Figure 9**

g237378

- |                                  |                |
|----------------------------------|----------------|
| 1. Bolt, captured in the lanyard | 3. Drag shield |
| 2. Underside guard               |                |

9. Adjust the caster position to the correct height of cut; refer to the Adjusting the Height of Cut section in the *Operator's Manual*.

# 4

## Completing the Installation

No Parts Required

### Procedure

1. Install the top cover and secure it with the fasteners removed in step 7 of [1 Preparing the Machine \(page 1\)](#).
2. If the hydraulic pump bypass valve is open, close the bypass valves, but do not overtighten.
3. Ensure that all fasteners are correctly tightened and that all fluid levels are at the correct level.
4. Start the engine and check the operation of all controls; refer to the traction unit *Operator's Manual*.
5. Collect all parts and documentation for the customer. Fill out the warranty and pre-delivery inspection documentation.

**Note:** A warranty registration card needs to be completed, both for the power unit and the attachment.

**Notes:**

**Notes:**



**Count on it.**