



32RD Mid-Size Rear-Discharge Deck

Model No. 02710—Serial No. 316000001 and Up

Model No. 02711—Serial No. 316000001 and Up

Model No. 02712—Serial No. 316000001 and Up

Setup Instructions

These instructions are for dealers only.

These instructions are for a dealer to install a cutting deck (Models 02710, 02711, or 02712) to a Mid-Size Power Unit (Models 30069 and 31914).

⚠ WARNING

Performing maintenance while the engine is running can expose your hands, other parts of your body, and clothing to get caught in moving parts, causing serious injury.

If you must perform any maintenance while the engine is running, keep your hands, feet, clothing, and parts of your body away from the cutting unit and moving parts.

⚠ WARNING

Engine exhaust contains carbon monoxide, which is an odorless, deadly poison that can kill you.

Do not run engine indoors or in an enclosed area.

Important: Read and understand these assembly instructions before proceeding. Refer to the *Parts Catalog* and *Operator's Manual* for the machine to determine which of these parts are to be fitted.

Important: Ensure that all lifting equipment is in good condition and has a safe and adequate capacity. Always seek assistance when lifting awkward or heavy loads.

Important: Torque all fasteners to the specified torque settings. The parts being fitted must not be drilled, cut or altered in any way.

1

Preparing the Machine

No Parts Required

Procedure

1. Park the machine on a level surface and engage the parking brake.
2. Shut off the engine, remove the key, and wait for the engine to cool.
3. Raise and support the traction unit.
4. Remove the 4 lug nuts securing both wheels to the traction unit (Figure 1).

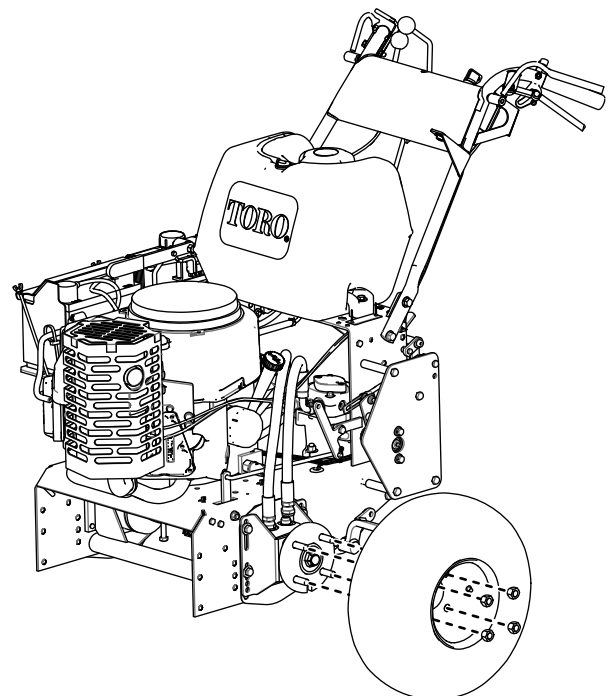


Figure 1
Left side shown

g237244



5. Remove the wheels (Figure 1).
6. Remove the deck cover and the PTO engagement linkage rod before lifting and moving the rotary cutting deck into position against the power unit (Figure 2).

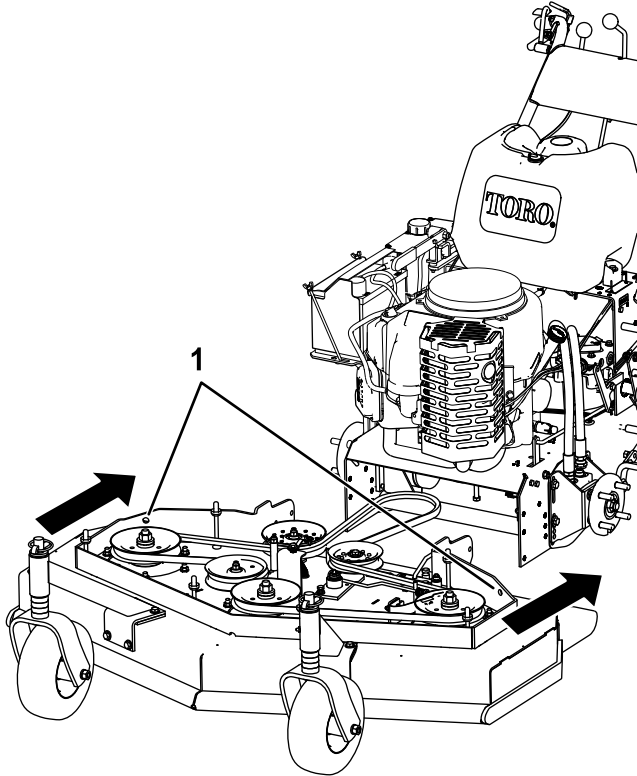


Figure 2

g237246

1. Lift points

Note: Retain all removed parts for later installation.

2

Installing the Cutting Deck

Parts needed for this procedure:

8	Bolt (3/8 x 1 inch)
8	Curved washer
8	Flange nut (3/8 inch)

Procedure

1. Install 8 bolts (3/8 x 1 inch), curved washers, and flange nuts to secure the rotary cutting deck to the power unit as shown in Figure 3.

Important: Ensure that the engine deck is parallel to the mower deck +/- 0.5 degrees before tightening the fixing bolts.

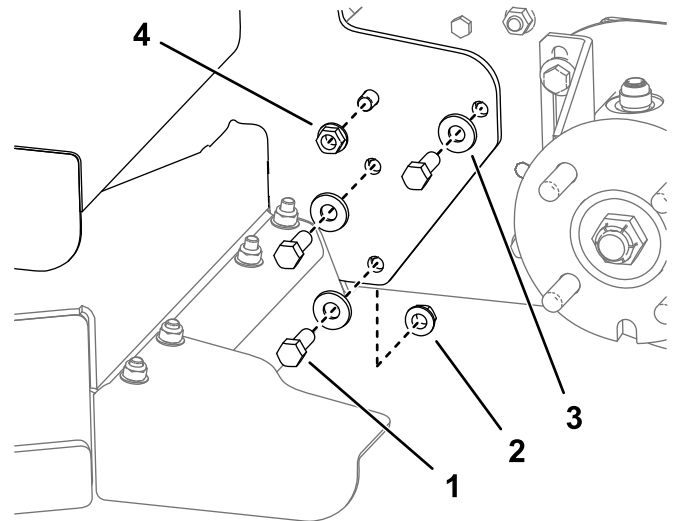


Figure 3

g237289

- | | |
|--------------------------|----------------------|
| 1. Bolt (3/8 x 1 inch) | 3. Curved washer |
| 2. Flange nut (3/8 inch) | 4. Reversed hardware |

Note: Install the bolts and washers together on the same side of the frame. The reversed hardware installs with the bolt end and nut facing outwards.

2. Torque the bolts to 40 to 47 N·m.
3. Screw the PTO engagement linkage rod into the power unit bell-crank yoke and then connect the other end to the assist arm and secure it with the hairpin cotter (Figure 4).

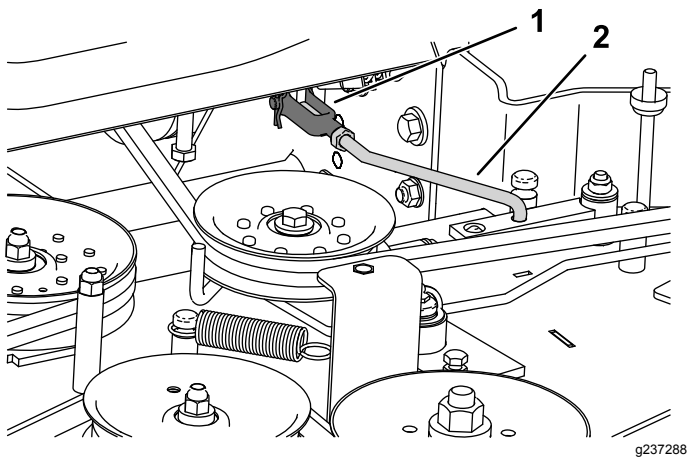


Figure 4

- 1. Bell-crank yoke
- 2. PTO engagement linkage

4. Adjust the PTO engagement as directed in the Adjusting the Mower Belt Tension section in the traction unit *Operator's Manual*.
5. Check the adjustment of the PTO safety switch as directed in the Adjusting the Mower Belt Tension section in the traction unit *Operator's Manual*.
6. Check the deck drive belt routing (Figure 5); refer to the Adjusting the Mower Belt Tension section in the traction unit *Operator's Manual* to adjust the deck drive belt.

Important: Ensure that the belt is on the correct side of the belt guide under the engine frame and adjust the belt guide.

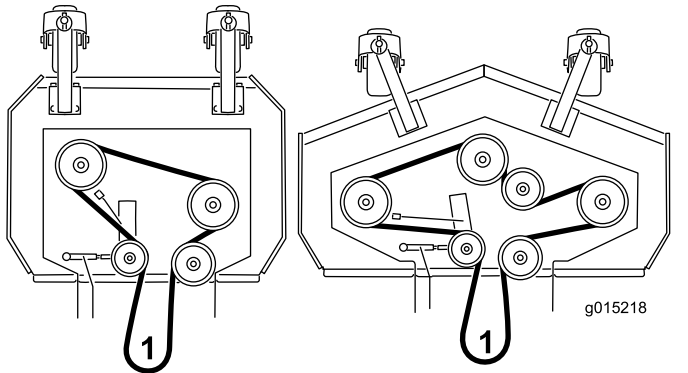


Figure 5
PTO engaged

- 1. To engine drive pulley

7. Check and adjust the blade brake; refer to the Adjusting the Blade Brake section of the *Operator's Manual*.

3

Installing the Guards

Parts needed for this procedure:

1	Center discharge guard
2	Bolt (M8 x 25 mm)
4	Washer (M8-17)
2	Locknut (M8)
1	Drive pulley guard
2	Carriage bolt (M10 x 25 mm)
2	Heavy washer (M10)
2	Spring washer (M10)
2	Nut (M10)
1	Underside guard
1	Drag shield

Procedure

1. Install the center discharge guard beneath the machine between the engine frame and the cutter deck.

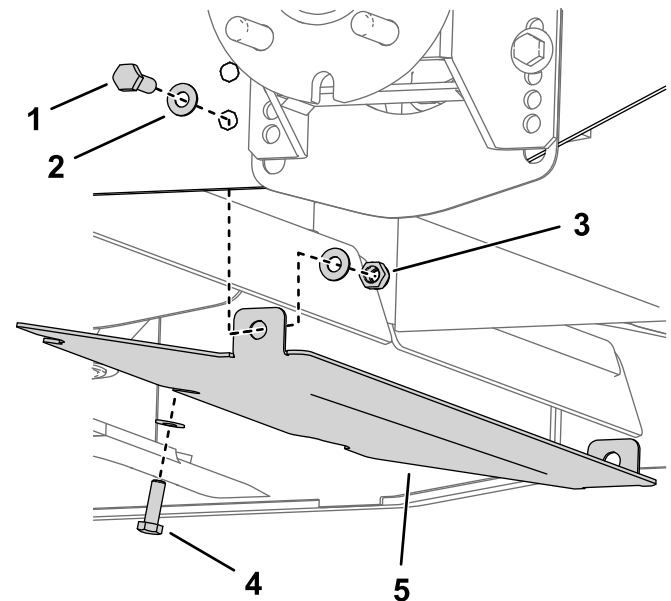


Figure 6

- 1. Bolt (M8 x 25 mm)
- 2. Washer (M8-17)
- 3. Washer (M8-17) and locknut (M8)
- 4. Center bolt and washer
- 5. Center discharge guard

- A. Remove the center nut, bolt and washers from the center fixing on the deck (Figure 6).

- B. Install the guard to the traction unit using 2 bolts (M8 x 25 mm), 4 washers (M8–17), and 2 locknuts (M8) in the lower hole on the engine frame (Figure 6).
 - C. Secure the front of the guard to the deck using the center bolt, washer, and nut you removed previously (Figure 6).
2. Refer to the Adjusting the Height of Cut section in the *Operator's Manual* and check the height setting of the rear axle depending on what height of cut is required.
 3. Install the traction wheels to the hubs and secure with the drive wheel lug nuts; torque the lug nuts to 122 to 129 N·m.
 4. Lower the unit to the ground.
 5. Center the drive pulley guard on the rear of the engine frame and install it with 2 carriage bolts (M10 x 25 mm), heavy washers (M10), spring washers, and nuts (M10) as shown in Figure 7.

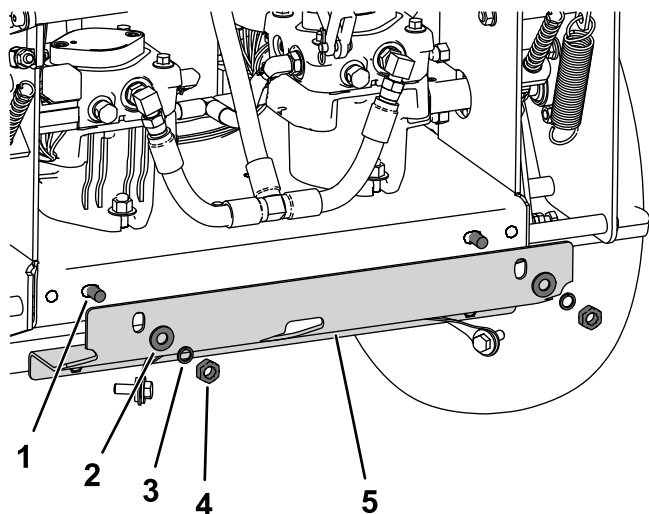


Figure 7

g237375

- | | |
|--------------------------------|-----------------------|
| 1. Carriage bolt (M10 x 25 mm) | 4. Nut (M10) |
| 2. Heavy washer (M10) | 5. Drive pulley guard |
| 3. Spring washer | |

6. Test fit the underside guard and adjust the position of the drive pulley guard if necessary (Figure 8).
7. Install the underside guard and drag shield to the drive pulley guard and secure them with the bolts captured in the lanyards on the drive pulley guard (Figure 8).

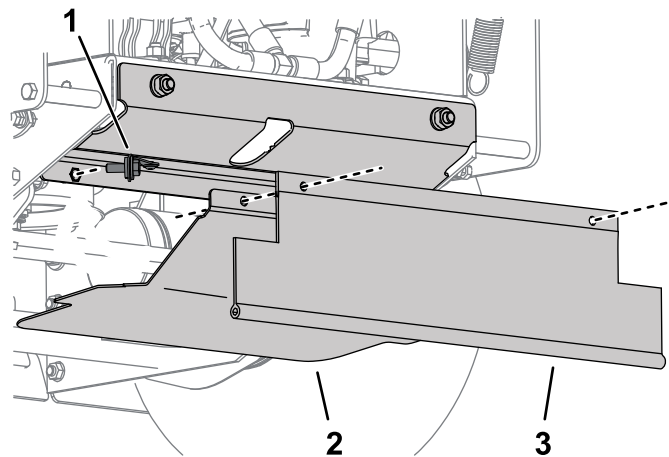


Figure 8

g237378

- | | |
|----------------------------------|----------------|
| 1. Bolt, captured in the lanyard | 3. Drag shield |
| 2. Underside guard | |

8. Adjust the caster position and the blade height to the correct height of cut; refer to the Adjusting the Height of Cut section in the *Operator's Manual*.

4

Completing the Installation

No Parts Required

Procedure

1. Install the deck cover and secure it with the fasteners removed in step 6 of 1 [Preparing the Machine \(page 1\)](#).
2. If the hydraulic pump bypass valve is open, close the bypass valves, but do not overtighten.
3. Ensure that all fasteners are correctly tightened and that all fluid levels are at the correct level.
4. Start the engine and check the operation of all controls; refer to the traction unit *Operator's Manual*.
5. Collect all parts and documentation for the customer. Fill out the warranty and pre-delivery inspection documentation.

Note: A warranty registration card needs to be completed, both for the power unit and the deck.

5

Setting the Idle Speed

Parts needed for this procedure:

1	Screw (M5 x 50)
---	-----------------

Procedure

To comply with the EU Noise Directive, the dealer is required to verify the correct engine speed of 2,900 rpm when the power unit is connected to Models 02710 and 02711 and 3500 rpm when the power unit is connected to model 02712.

2900/3500 rpm is the unloaded engine rpm, adjusted with the PTO off (disengaged). Tolerance is plus 0 rpm, minus 50 rpm. The engine should be warm; run the engine for 15 minutes before adjusting. Double check the final engine speed.

1. Loosen the locknut and unscrew the high idle screw a few turns. When setting the engine speed on power units connected to models 02710 and 02711, replace the high idle screw with the high idle M5 x 50 screw supplied with 02710 and 02711 (Figure 9).

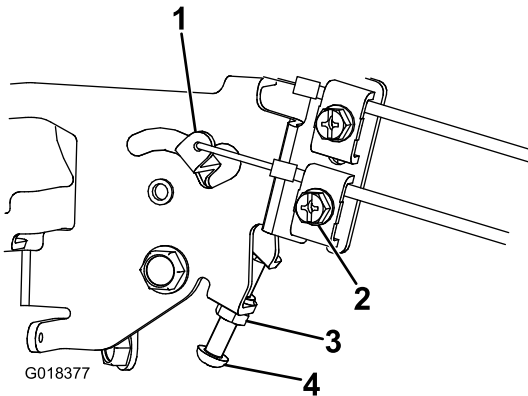


Figure 9

g018377

1. Speed control lever
2. Cable screw
3. Locknut
4. High idle screw

2. Move the throttle lever, on the operator control panel, to obtain the desired engine rpm.

3. Turn the high idle screw so that the end of it just touches the speed control lever, and tighten the lock nut (Figure 9).
4. Check the high idle speed and repeat this procedure if necessary.
5. Loosen the cable screw and adjust the cable length so that the throttle lever on the operator control panel is set to full throttle when the speed control lever touches the previously set high idle screw.
6. Tighten the cable screw.

Notes:

Notes:



Count on it.