

Service Kit

Model No. 133-9973

Installation Instructions

Installation

Important: If your mower is a 2014 model or older, install the decal and reference the new engine number for engine service parts. If your mower is a 2015 model or newer then just reference your mower model and serial number and discard the decal.

This engine service kit replaces and is an upgrade to your original spec engine.

Place the decal on the mower chassis next to the model/serial decal. Make sure to clean and dry the area around the serial number tag thoroughly first (Figure 1).

Your new service engine part number is 133-9973. Use this number when ordering engine service parts.

Keep this document in your records for future reference

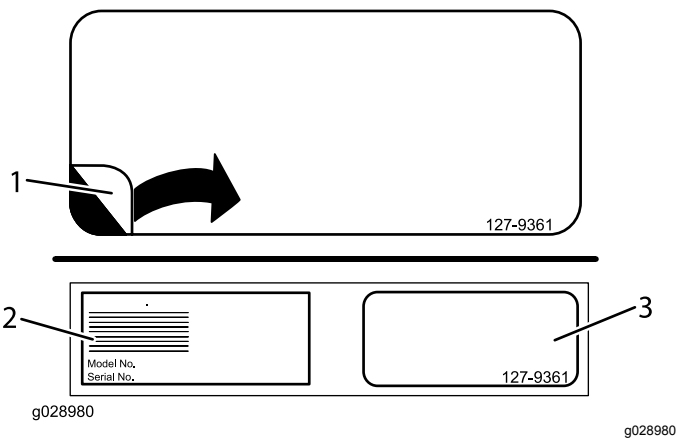


Figure 1

1. Peel off the decal
2. Serial number tag
3. Place the decal next to the serial tag on your mower

