

# **LAWN-BOY®**

## **Silver Pro Series™ Walk-Behind Mower**

**Model No. 10331 – 8900001 & Up**

**Model No. 10323 – 8900001 & Up**

---

# **Parts Catalog**

## ORDERING REPLACEMENT PARTS

To order replacement parts, please supply: the part number, the quantity, and the description of each part desired.

## Contents

<b>Description</b>	<b>Page</b>	<b>Description</b>	<b>Page</b>
Housing Assembly .....	1	Crankshaft Assembly .....	7
Engine & Blade Assembly .....	2	Gear Case Assembly .....	8
Rear Axle Assembly .....	3	Carburetor Assembly .....	9
Handle Assembly .....	4	Lawn–Boy Part Number Index .....	10–13
Engine Assembly .....	5		
Engine Assembly (Continued) .....	6		

**Note:**

## Accessories

<b>Description</b>	<b>Model / Parts No.</b>	<b>Description</b>	<b>Model / Parts No.</b>
Side Bagging Kit .....	Model No. 89814	Leaf Shredder Kit .....	Model No. 89860
Rear Bagging Kit .....	Model No. 89800	Leaf Bag Kit w/Chute .....	Model No. 89811
Leaf Bag .....	Model No. 89804	Mow & Feed Fertilizer Spreader .	Model No. 52070

## Part Description Abbreviations

Part descriptions in this catalog may include the following abbreviations.

<b>Abbreviation</b>	<b>Meaning</b>	<b>Abbreviation</b>	<b>Meaning</b>
AR .....	as required	HWHTF .....	hex washer head thread forming
ASM .....	assembly	INC .....	incorporated
CARR .....	carriage	LH .....	left hand
DEG .....	degrees	PH .....	pan head
FH .....	flat head	PPH .....	Phillips pan head
GA .....	gauge	PTO .....	power take off
HF .....	hex flange	RH .....	right hand
HFW .....	hex flange washer	SFH .....	slotted fillister head
HH .....	hex head	SH .....	square head
HHF .....	hex head flange	SHWH .....	slotted hex washer head
HHST .....	hex head self tapping	SPH .....	slotted pan head
HJ .....	hex jam	STD .....	standard
HOC .....	height-of-cut	TAP .....	self tapping
HS .....	hex socket	TH .....	truss head
HSBH .....	hex socket button head	TTH .....	Torx truss head
HSFH .....	hex socket flat head	WH .....	wing head
HSH .....	hex socket head		
HWH .....	hex washer head		

## Important Format Explanations

This catalog uses special formats to convey information in illustrations and parts lists. Specifically, one format is used in conjunction with service assemblies and another with quantities associated with reference numbers.

## Service Assemblies

Parts within service assemblies have reference numbers in the form  $X:Y$ .  $X$  is the reference number of the service assembly and  $Y$  is a sequential number unique to each part within the service assembly.

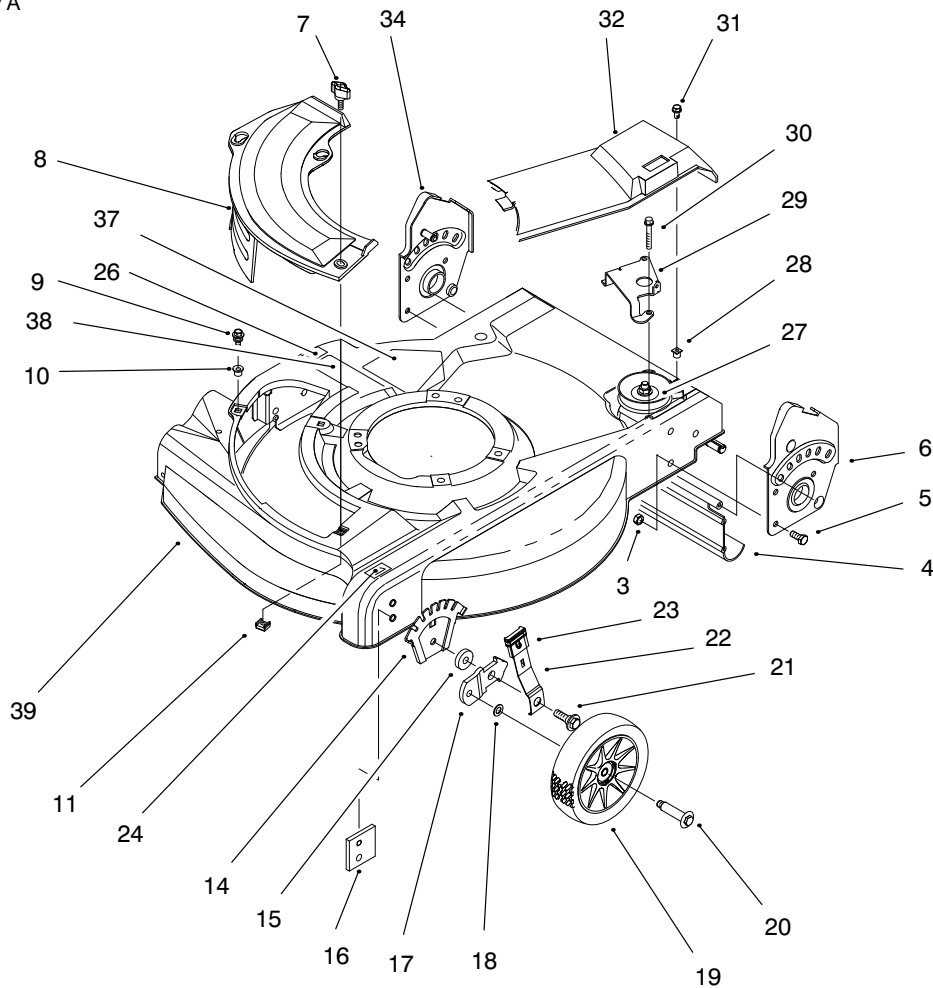
For example, a wheel assembly might be identified by reference number 6, the tire by 6:1, the valve by 6:2, and the wheel by 6:3. When you order the assembly identified by reference number 6, you receive all parts identified by reference numbers 6:1, 6:2, and 6:3. However, you may also order any part individually.

Reference numbers of this type appear in part lists and as callouts in illustrations.

## Reference Numbers with Quantities

Illustrations may have a quantity in parentheses next to a reference number, in the form  $X (Y)$ .  $X$  is the reference number.  $Y$  in parentheses is the quantity of the part identified by the reference number.

For example, the illustration callout 4 (2) indicates that two parts are used in that instance.



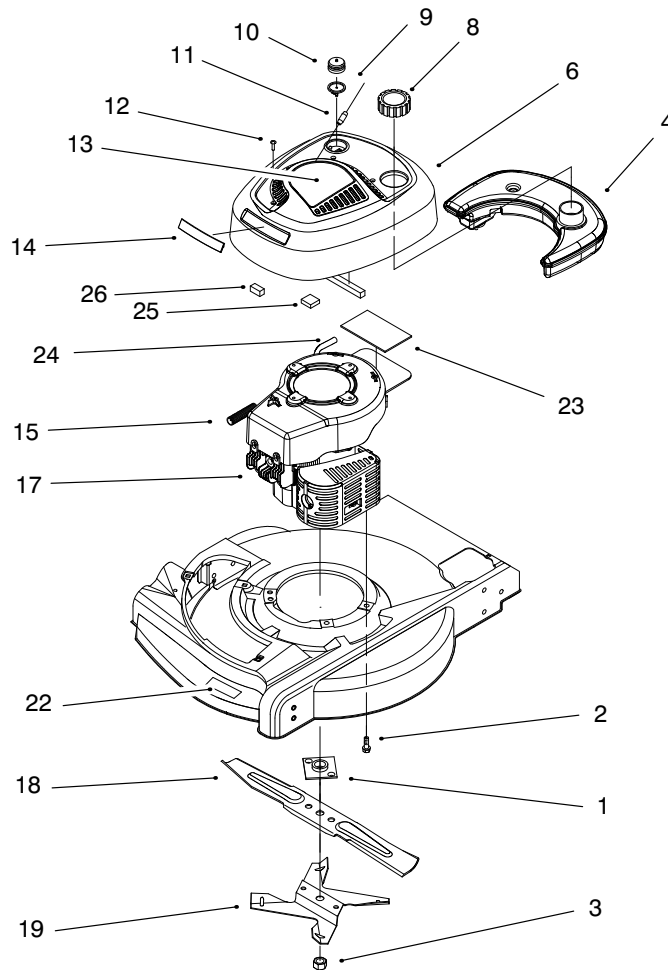
Sheet No.:2

## Housing Assembly

Ref. No.	Part No.	Qty.	Description
3	3296-29	6	Nut-Lock
4	92-8647	1	Shield-Trailing
5	322-3	6	Screw-HH
6	92-7724	1	ASM-Handle Bracket
7	98-8332	1	Knob-Cover Plate
8	92-8630	1	Mulch Plate-21"
9	614677	2	Screw-Sems
10	94-1610	2	Grommet-Plastic
11	613765	1	Nut-Cage
14	92-4881	2	Plate-Height Adjust
15	92-4890	2	Washer
16	92-7731	2	Plate-Baffle
17	95-7403	2	Bracket-Wheel Height Adj
18	40-1940	2	Washer
19	684776	2	ASM-Wheel & Tire 6"
20	92-1099	2	Bolt-Shoulder
21	614672	2	Bolt-Shoulder
22	614687	2	Spring Arm-Front
23	92-1008	4	Knob-Height Adjust
24	92-2915	1	Decal-HOC
26	92-2914	1	Decal-HOC
27	95-7412	1	ASM-Gear Case
28	605120	1	Grommet
29	95-1732	1	Guide-Transmission

Ref. No.	Part No.	Qty.	Description
30	65-5221	2	Screw-Thread Forming
31	92-9665	1	Screw-Phil
32	95-7413	1	Cover-Drive
34	92-7723	1	ASM-Handle Bracket
*36	95-7052	1	Plate-Cover
37	39-5770	1	Decal-Danger
38	92-1097	1	Decal-Discharge
39	98-4472	1	ASM-Housing & Baffle

\* Not illustrated



Sheet No.:3

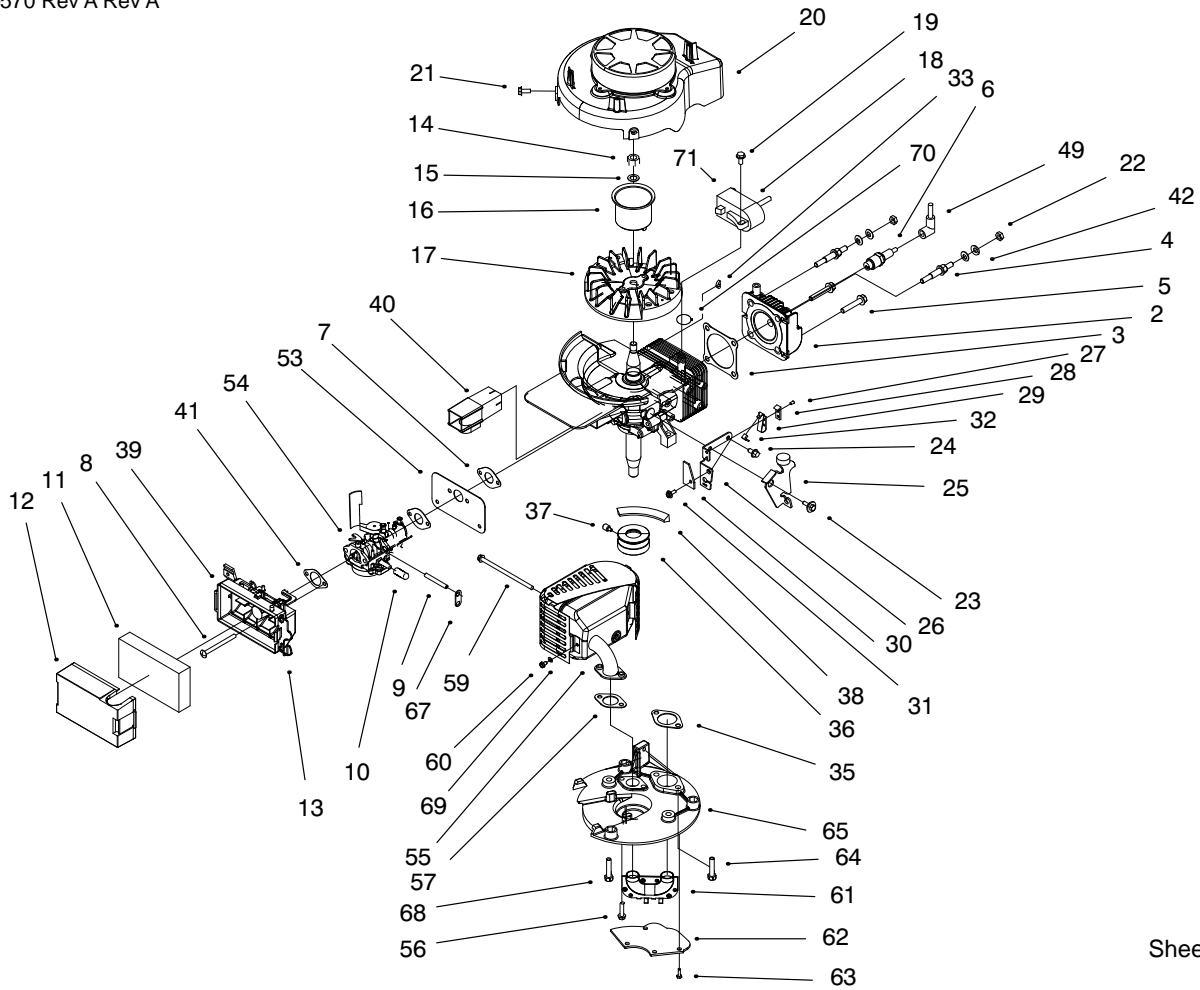
## Engine & Blade Assembly

Ref. No.	Part No.	Qty.	Description
1	677525	1	ASM-Plate & Collar
2	611774	3	Screw
3	603164	1	Nut-Blade
4	95-1897	1	Gas Tank
6	98-7033	1	ASM-Shroud & Recoil Covr
8	98-8344	1	ASM-Fuel/Oil Cap
9	66-7460	1	Bulb-Primer
10	44-2750	1	Body-Primer
11	92-1701	1	Rope-Stop
12	95-7621	3	Screw-Tf Acorn Hd
13	95-7417	1	Decal-Recoil
14	92-8615	1	Applique-Shroud
15	93-4306	1	Spring-Compression
17		1	Engine ASM Recoil Sp
18	612543	1	Blade-21" Whirl
19	92-1630	1	Fan-Mulching
20	314576	1	Screw-Throttle Cable
21	306531	1	Nut-Throttle Cable
22	98-1567	1	Decal-Deck
23	98-1386	1	Foam Pad
24	612782	1	Gas Line
25	99-1521	1	Foam Strip
26	99-1522	2	Foam Strip

Ref. No.	Part No.	Qty.	Description







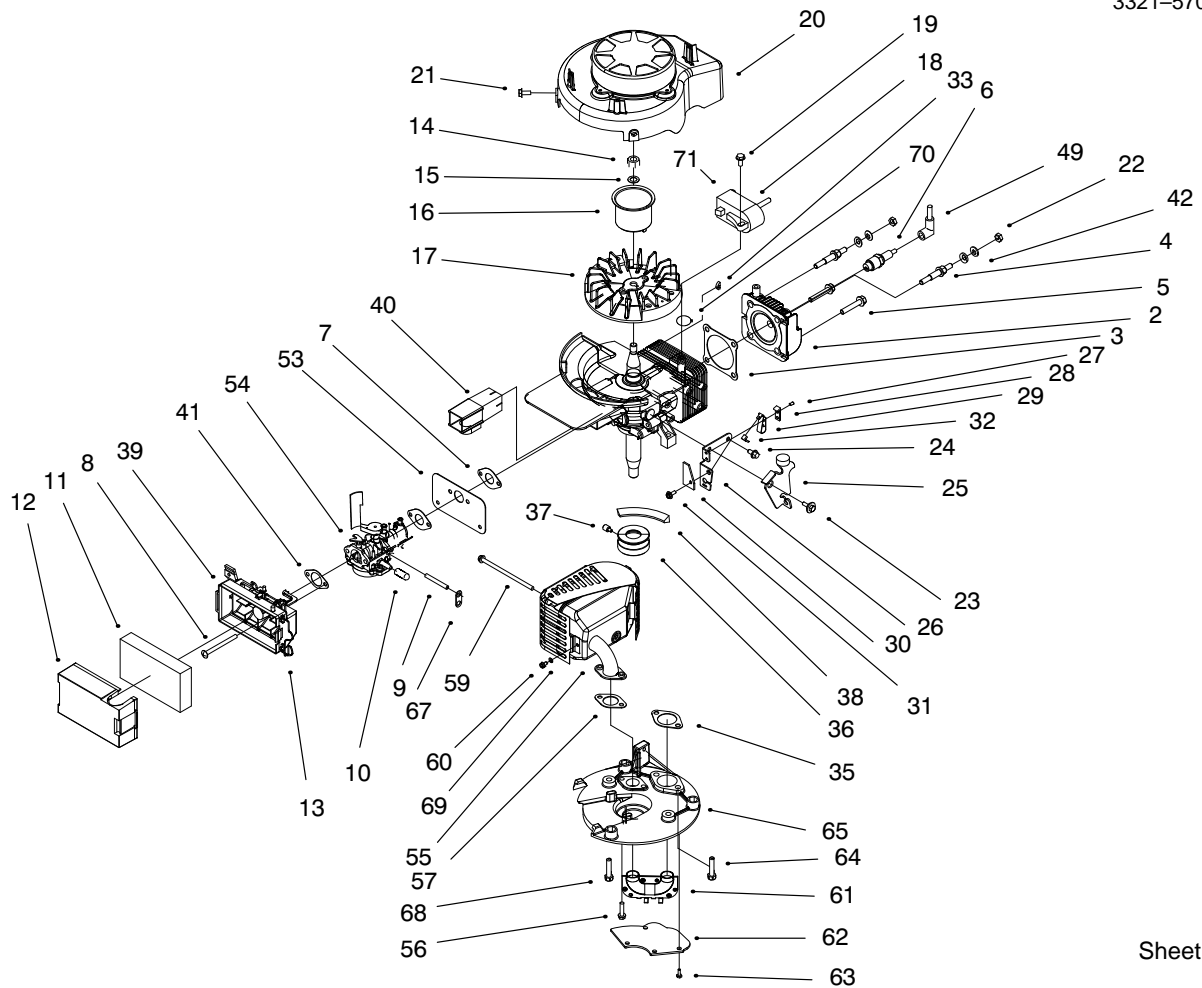
Sheet No.:100

## Engine Assembly

Ref. No.	Part No.	Qty.	Description
2	94-5776	1	Head
3	94-5778	1	Gasket-Head
4	94-5779	2	Stud
5	94-5780	2	Bolt
6	50-1170	1	Spark Plug
7	94-5795	2	Intake Gasket
8	612507	2	Screw
9	95-1861	1	Primer Hose
11	95-5574	1	Element-Air Filter
12	95-5577	1	Cover-Air Filter
13	610383	1	Retainer-Filter
14	130743	1	Nut
15	316959	1	Washer-Lock
16	95-1786	1	Cup-Starter
17	95-1866	1	Flywheel Machined
18	92-1152	1	Ignition ASM
19	613208	2	Screw-HWH
20	95-1868	1	Shroud & Recoil ASM
21	700094	2	Screw
22	146501	2	Nut-Lock
23	95-1870	1	Shoulder Screw Brake
24	95-1871	1	Screw (Brake)
25	93-4312	1	ASM-Brake Plate
26	84-7820	1	Plate-Mount Brake

Ref. No.	Part No.	Qty.	Description
27	3290-459	2	Rivet-Self Expand Plas
28	92-2925	1	Strap-Insulation
29	60-9010	1	Strap-Ground
30	53-4690	1	Stop-Ground Strap
31	12-5450	1	Screw-Thread Forming
32	98-7037	1	Brake Switch Lead Wire
33	607199	1	Key
35	95-1778	1	Gasket-Exhaust
36	95-1878	1	Pulley Engine
37	613227	1	Screw-Set
38	92-1043	1	V-Belt
39	95-5588	1	Air Filter Base ASM
40	95-5578	1	Tunnel
41	95-7613	1	Gasket-Filter Base
42	3290-456	4	Washer-Lock
49	684698	A/R	Cover & Terminal
53	98-1388	1	Heat Shield
54	98-7042	1	Carburetor ASM
55	98-7048	1	Muffler & Guard
56	613208	2	Screw-HWH
57	98-1392	1	Gasket
59	611228	1	Bolt
60	98-1394	2	Screw





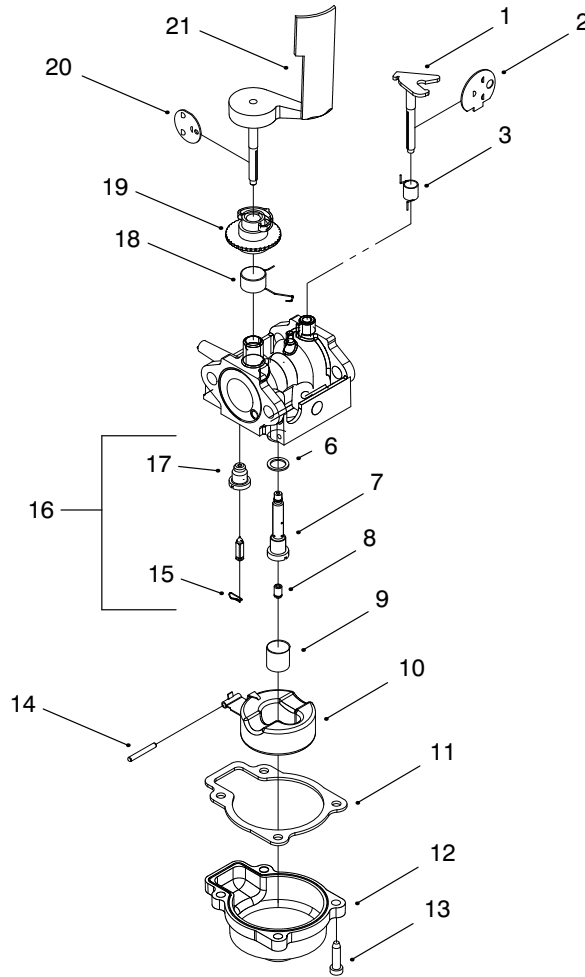
Sheet No.:100

### Engine Assembly (Continued)

Ref. No.	Part No.	Qty.	Description	Ref. No.	Part No.	Qty.	Description
61	98-1557	1	Transfer Tube				
62	98-1591	1	Cover Plate				
63	700822	4	Screw				
64	322-17	2	Screw-HH				
65	98-1384	1	Muffler Plate Machining				
67	95-7615	1	Retainer Hose				
68	322-7	2	Screw-HH				
69	3254-1	2	Washer-Lock				
70	317893	1	Tie Strap				
71	684048	1	Cd Ignition				







Sheet No.:400

## Carburetor Assembly

Ref. No.	Part No.	Qty.	Description	Ref. No.	Part No.	Qty.	Description
1	95-5581	1	Shaft-Choke				
2	94-5788	1	Disc-Choke				
3	95-5583	1	Spring-Choke Return				
6	612383	1	Washer				
7	98-7001	1	Nozzle				
8	98-1357	1	Mainjet 77.5				
9	94-5787	1	Filter-Fuel				
10	95-1899	1	Float & Arm ASM				
11	98-1362	1	Gasket-Float Chamber				
12	92-9691	1	Float Chamber				
13	608850	4	Screw				
14	92-6389	1	Pin				
15		1	Clip				
16	92-9697	1	Float & Seat ASM				
17		1	ASM-Seat				
18	98-7011	1	Spring-Throttle				
19	610834	1	Collar Adjustment				
20	98-7047	1	Disc-Throttle				
21	92-6376	1	Air Vane & Shaft				

# Lawn-Boy Part Number Index

Part No.	Page No.	Ref. No.	Qty.	Description
130743	5	14	1	Nut
146501	5	22	2	Nut-Lock
303712	7	16	1	Ring-Retaining
306531	2	21	1	Nut-Throttle Cable
314576	2	20	1	Screw-Throttle Cable
316959	5	15	1	Washer-Lock
317893	6	70	1	Tie Strap
603164	2	3	1	Nut-Blade
605120	1	28	1	Grommet
607199	5	33	1	Key
608850	9	13	4	Screw
609790	7	*	1	Sealant
610358	3	13	2	Nut-Lock
610372	7	*	1	Sealant
610383	5	13	1	Retainer-Filter
610834	9	19	1	Collar Adjustment
611228	5	59	1	Bolt
611393	7	3	2	Screw
611396	7	4	1	Oil Seal
611774	2	2	3	Screw
612383	9	6	1	Washer
612507	5	8	2	Screw
612543	2	18	1	Blade-21" Whirl
612782	2	24	1	Gas Line
612824	4	21	1	Clip-Rope
612825	4	14	1	Handle-Starter
613208	5	19	2	Screw-HWH
613208	5	56	2	Screw-HWH
613227	5	37	1	Screw-Set
613765	1	11	1	Nut-Cage
614249	4	33	3	Tie Strap
614426	3	19	2	Washer-Stepped
614447	3	9	2	Spacer-Axle Shaft
614596	8	5	1	Gear-34t
614643	4	19	1	Handle Section-Lower
614668	8	1	1	Cover-Gear Case
614669	8	17	2	Pulley-Half
614672	1	21	2	Bolt-Shoulder
614677	1	9	2	Screw-Sems
614687	1	22	2	Spring Arm-Front
614696	8	8	1	Shaft-Intermediate
614697	4	2	2	Screw-Handle
677525	2	1	1	ASM-Plate & Collar
677982	7	1	1	Split Liner ASM
683911	7	5	1	Needle Bearing
684048	6	71	1	Cd Ignition
684698	5	49	A/R	Cover & Terminal
684776	1	19	2	ASM-Wheel & Tire 6"
700094	5	21	2	Screw
700822	6	63	4	Screw
12-5450	5	31	1	Screw-Thread Forming
36-4780	8	6	2	Washer-Thrust
36-4791	8	11	2	Washer-Thrust
38-7820	8	13	1	Bearing-Ball
39-5770	1	37	1	Decal-Danger
40-1940	1	18	2	Washer
44-2750	2	10	1	Body-Primer
47-2900	3	8:3	2	Bushing
50-1170	5	6	1	Spark Plug
53-4690	5	30	1	Stop-Ground Strap
55-3760	8	10	1	15 T Pinion
60-8750	8	12	2	Bushing

\*Not Illustrated

# Lawn–Boy Part Number Index (cont.)

Part No.	Page No.	Ref. No.	Qty.	Description
60–8850	8	3	2	Bushing–Output
60–9010	5	29	1	Strap–Ground
65–2720	3	3	4	Ring–Retaining
65–4710	3	7	2	Ring–Friction
65–4720	3	17	2	Spring–Compression
65–4730	3	14	2	Washer–Thrust
65–4740	3	4	4	Washer–Thrust
65–4750	3	16	2	Gear–Pinion
65–4760	3	15	2	Washer
65–5221	1	30	2	Screw–Thread Forming
66–6040	3	6	1	Key–Locking RH
66–6050	3	5	1	Key–Rocking LH
66–7460	2	9	1	Bulb–Primer
70–9760	3	8:2	2	Bushing
84–7820	5	26	1	Plate–Mount Brake
92–1001	4	9	1	Bail–Sp Control
92–1004	3	12	2	ASM–Spring Arm
92–1008	1	23	4	Knob–Height Adjust
92–1042	3	2	2	ASM–Whl
92–1043	5	38	1	V–Belt
92–1057	3	1	2	Bolt–Shoulder
92–1097	1	38	1	Decal–Discharge
92–1099	1	20	2	Bolt–Shoulder
92–1152	5	18	1	Ignition ASM
92–1630	2	19	1	Fan–Mulching
92–1701	2	11	1	Rope–Stop
92–2914	1	26	1	Decal–HOC
92–2915	1	24	1	Decal–HOC
92–2925	5	28	1	Strap–Insulation
92–4881	1	14	2	Plate–Height Adjust
92–4890	1	15	2	Washer
92–5412	4	8	2	Stop–Pivot
92–6376	9	21	1	Air Vane & Shaft
92–6389	9	14	1	Pin
92–7723	1	34	1	ASM–Handle Bracket
92–7724	1	6	1	ASM–Handle Bracket
92–7727	8	2	1	Gearcase–Upper Ss
92–7729	4	6	1	Anchor–Cable
92–7731	1	16	2	Plate–Baffle
92–7738	4	18	1	Cable–Flywheel Brake
92–7746	3	8	2	ASM–Hgt Adj Arm
92–8615	2	14	1	Applique–Shroud
92–8630	1	8	1	Mulch Plate–21”
92–8647	1	4	1	Shield–Trailing
92–9665	1	31	1	Screw–Phil
92–9691	9	12	1	Float Chamber
92–9697	9	16	1	Float & Seat ASM
93–0239	8	7	1	Shaft–Output
93–3653	4	25	1	Handle–Guard
93–4184	4	12	1	Bail–Flywheel Brake
93–4306	2	15	1	Spring–Compression
93–4312	5	25	1	ASM–Brake Plate
93–7380	4	20	1	Anchor–Cable
93–7383	4	16	1	Guide–Rope
94–1609	3	18	2	Cover–Wheel
94–1610	1	10	2	Grommet–Plastic
94–5764	7	9	1	Oil Seal
94–5765	7	10	1	Ring Retaining
94–5776	5	2	1	Head
94–5778	5	3	1	Gasket–Head
94–5779	5	4	2	Stud
94–5780	5	5	2	Bolt

\*Not Illustrated

# Lawn-Boy Part Number Index (cont.)

Part No.	Page No.	Ref. No.	Qty.	Description
94-5781	7	14	6	Screw-HWH
94-5787	9	9	1	Filter-Fuel
94-5788	9	2	1	Disc-Choke
94-5795	5	7	2	Intake Gasket
95-1713	4	13	1	Handle Section-Upper
95-1731	8	15	1	Gear-Pinion
95-1732	1	29	1	Guide-Transmission
95-1778	5	35	1	Gasket-Exhaust
95-1786	5	16	1	Cup-Starter
95-1861	5	9	1	Primer Hose
95-1866	5	17	1	Flywheel Machined Recoil
95-1868	5	20	1	Shroud & Recoil ASM
95-1870	5	23	1	Shoulder Screw Brake
95-1871	5	24	1	Screw (Brake)
95-1878	5	36	1	Pulley Engine
95-1897	2	4	1	Gas Tank
95-1899	9	10	1	Float & Arm ASM
95-5550	8	18	1	Spacer-Pulley
95-5574	5	11	1	Element-Air Filter
95-5577	5	12	1	Cover-Air Filter
95-5578	5	40	1	Tunnel
95-5581	9	1	1	Shaft-Choke
95-5583	9	3	1	Spring-Choke Return
95-5588	5	39	1	Air Filter Base ASM
95-7052	1	36	1	Plate-Cover
95-7403	1	17	2	Bracket-Wheel Height Adj
95-7412	1	27	1	ASM-Gear Case
95-7413	1	32	1	Cover-Drive
95-7415	4	17	1	Cable-Throttle 2 Cycle
95-7417	2	13	1	Decal-Recoil
95-7613	5	41	1	Gasket-Filter Base
95-7615	6	67	1	Retainer Hose
95-7621	2	12	3	Screw-Tf Acorn Hd
95-7626	7	12	1	Ring Set
95-7628	7	11	1	Piston & Conn Rod ASM
95-7629	7	17	1	Connecting Rod ASM
95-7631	7	18	1	Cylinder & Crankcase ASM
95-7636	7	*	1	Short Block ASM
98-1357	9	8	1	Mainjet 77.5
98-1362	9	11	1	Gasket-Float Chamber
98-1384	6	65	1	Muffler Plate Machining
98-1386	2	23	1	Foam Pad
98-1388	5	53	1	Heat Shield
98-1392	5	57	1	Gasket
98-1394	5	60	2	Screw
98-1557	6	61	1	Transfer Tube
98-1567	2	22	1	Decal-Deck
98-1591	6	62	1	Cover Plate
98-4472	1	39	1	ASM-Housing & Baffle
98-7001	9	7	1	Nozzle
98-7011	9	18	1	Spring-Throttle
98-7033	2	6	1	ASM-Shroud & Recoil Covr
98-7037	5	32	1	Brake Switch Lead Wire
98-7042	5	54	1	Carburetor ASM
98-7046	7	15	1	Ring-Retaining
98-7047	9	20	1	Disc-Throttle
98-7048	5	55	1	Muffler & Guard
98-7134	4	3	2	Knob
98-8328	4	7	1	Cable-Traction
98-8332	1	7	1	Knob-Cover Plate
98-8333	2	5	1	Foam Strip
98-8334	2	25	1	Foam Strip

\*Not Illustrated

# Lawn–Boy Part Number Index (cont.)

Part No.	Page No.	Ref. No.	Qty.	Description
98–8335	2	26	2	Foam Strip
98–8344	2	8	1	ASM–Fuel/Oil Cap
99–2920	7	7	1	Crankshaft
302–56	3	8:4	2	Fitting–Grease
321–49	4	5	1	Screw–HH
321–50	4	15	1	Screw
322–3	1	5	6	Screw–HH
322–7	6	68	2	Screw–HH
322–17	6	64	2	Screw–HH
3254–1	6	69	2	Washer–Lock
3256–24	8	14	1	Washer–Flat
3285–19	8	4	2	Pin–Spirol
3290–456	5	42	4	Washer–Lock
3290–459	5	27	2	Rivet–Self Expand Plas
3296–5	8	16	1	Nut–Lock
3296–29	1	3	6	Nut–Lock
3296–73	4	4	2	Nut–Lock
32144–4	8	9	4	Screw–TAP
32144–85	3	11	2	Screw–HH