



Count on it.

Parts Catalog

**Snowthrower
Compact Tool Carrier**

Model No. 22456—Serial No. 40000000 and Up



Ordering Replacement Parts

To order replacement parts, please supply the part number, the quantity, and the description of each part desired.

Understanding Reference Numbers

Each identified part in an illustration has a reference number. The reference number for a part also appears in the parts list, along with other information about the part.

This catalog uses two special reference number formats, one to indicate parts in a service assembly and another to indicate the quantity of a given part in an illustration.

Service Assembly Reference Numbers

Parts in service assemblies have reference numbers in the form a:b. The a represents the reference number of the entire service assembly and the b represents a sequential number unique to each part within the service assembly.

For example, a wheel assembly might be identified by reference number 6, the tire by 6:1, the valve by 6:2, and the wheel by 6:3. When you order the assembly identified by reference number 6, you receive all parts identified by reference numbers 6:1, 6:2, and 6:3. However, you may also order any part individually. Reference numbers of this type appear in illustration and in parts lists.

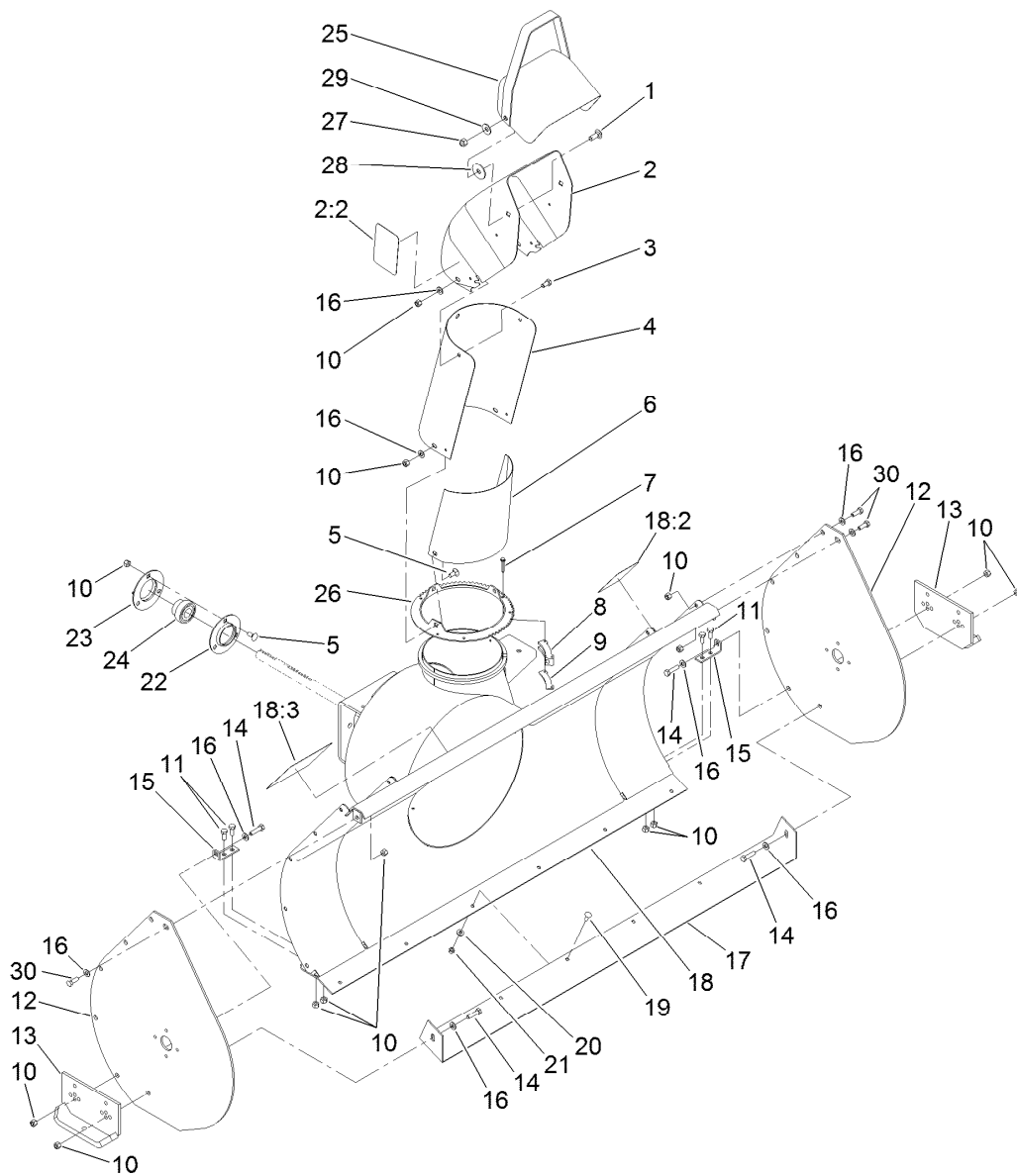
Reference Numbers Indicating Quantity

In an illustration, if a reference number indicates more than one part, the reference number has the form nX y. The n represents the quantity of the part, the X is the multiplication symbol, and the y represents the reference number.

For example, in an illustration, the reference number 2X 37 means that two of the parts identified by reference number 37 are indicated.

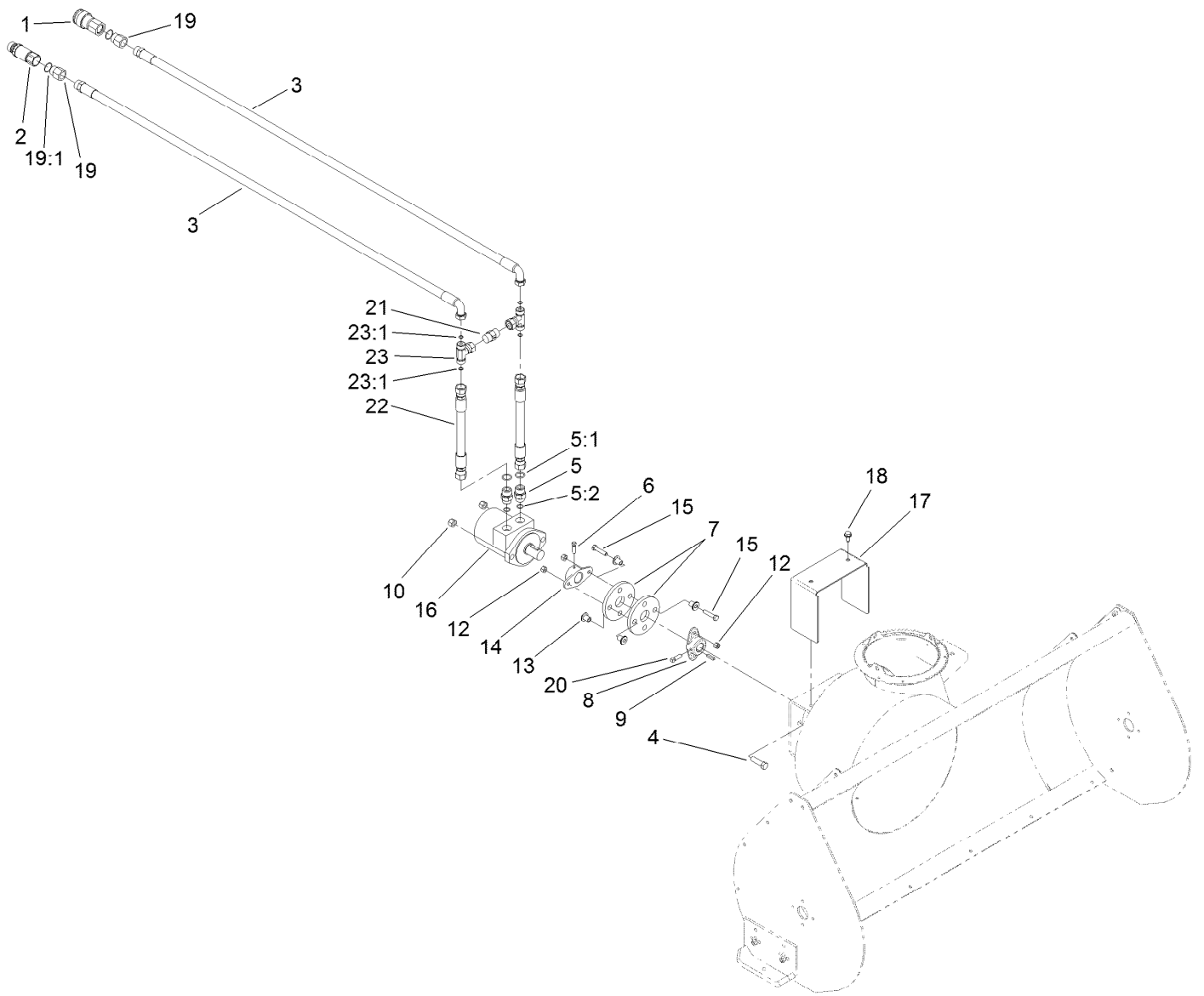
Contents

Discharge Chute Assembly	4
Hydraulic Hose and Motor Assembly	5
Hydraulic Motor Assembly No. 117-6373	6
Auger and Gearcase Assembly	8
Crank and Mounting Assembly	10
Attachments and Accessories	12



Discharge Chute Assembly

Ref.	Part Number	Qty.	Description	Ref.	Part Number	Qty.	Description
1	3231-2	2	Bolt-CARR	17	133-1646-01	1	Blade-Scraper
2	100-4623	1	Discharge Chute ASM	18	99-6897	1	Housing ASM
2:2	93-7309	2	Decal-Danger, Discharge	18:2	93-7310	2	Decal-Danger, Auger
3	322-2	3	Screw-HH	18:3	93-7311	1	Decal-Warning
4	26-1110-01	1	Extender-Chute, Upper	19	3229-25	6	Screw-CARR
5	3230-1	6	Bolt-CARR	20	3256-22	6	Washer-Flat
6	94-9787-01	1	Shield-Deflector	21	3296-42	6	Nut-Lock, NI
7	100-4352	6	Screw-HWH	22	110568	1	Flange
8	25-5450	3	Retainer-Chute	23	119020	1	Flange-Relube
9	133-1645-03	3	Plate-Retainer, Chute	24	110569	1	Bearing And Collar
10	3296-29	27	Nut-Lock, NI	25	11-7120-01	1	Deflector
11	322-3	4	Screw-HH	26	25-5290-01	1	Ring-Swivel, Chute
12	133-1623-01	2	Plate-Side	27	3296-39	2	Nut-Lock, NI
13	100-4600-01	2	Skid ASM	28	20-4320	2	Washer-Rubber
14	322-47	4	Screw-HH	29	3290-340	2	Washer-Belleville
15	99-2304-01	2	Bracket-Support, Blade	30	322-4	6	Screw-HH
16	3256-23	16	Washer-Plain				

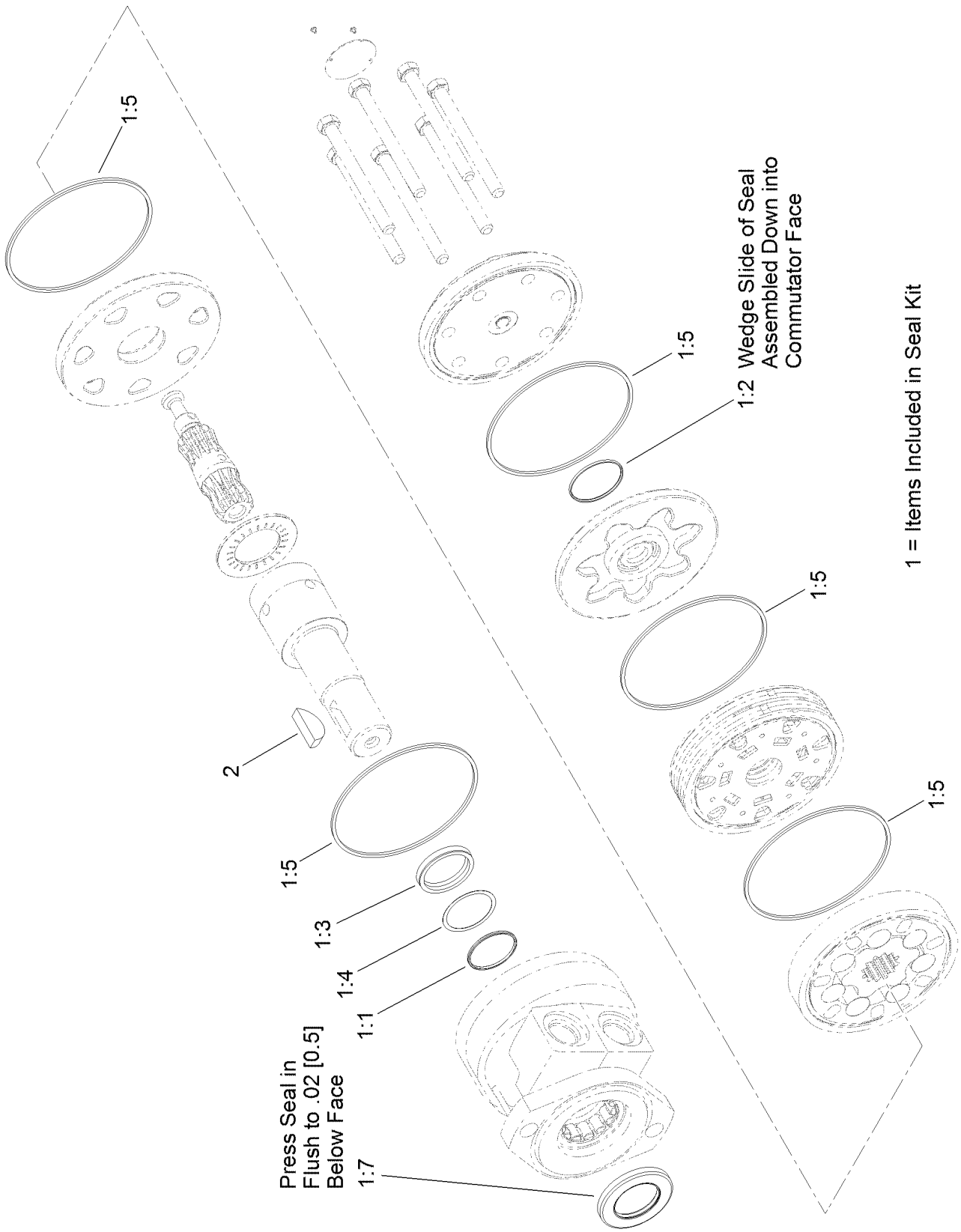


Hydraulic Hose and Motor Assembly

<i>Ref.</i>	<i>Part Number</i>	<i>Qty.</i>	<i>Description</i>	<i>Ref.</i>	<i>Part Number</i>	<i>Qty.</i>	<i>Description</i>
1	104-6134	1	Coupler-Face, Flush	14	110-5236	1	Hub-Engine
2	100-4701	1	Nipple-Connect, Pressure	15	322-7	4	Screw-HH
2:1	100-6120	1	Seal Kit ●	16	117-6373	1	HYD Motor ASM
3	99-6108	2	Hose-HYD	16:1	1-000119	1	Seal Kit ●
4	324-6	2	Screw-HH	16:2	13-2840	1	Key-Square ●
5	340-6	2	Fitting-Straight	17	100-4626-01	1	Shield-Motor
5:1	237-30	1	O-Ring	18	3234-47	2	Screw-HHF
5:2	237-80	1	O-Ring	19	100-4617	2	Adapter-HYD
6	3241-5	2	Screw-Set	19:1	237-80	1	O-Ring
7	44-2230	2	Coupling-Rubber	20	3242-6	2	Screw-Set, SQH
8	117-1311	1	Hub-Pump	21	117-6383	1	Valve-Check
9	6366	1	Key	22	95-3664	2	HYD Hose ASM
10	3296-48	2	Nut-Lock, NI	23	93-6810	2	Fitting-Tee
12	3296-29	4	Nut-Lock, NI	23:1	237-30	2	O-Ring
13	71-4411	4	Spacer				

● Not illustrated

Hydraulic Motor Assembly No. 117-6373

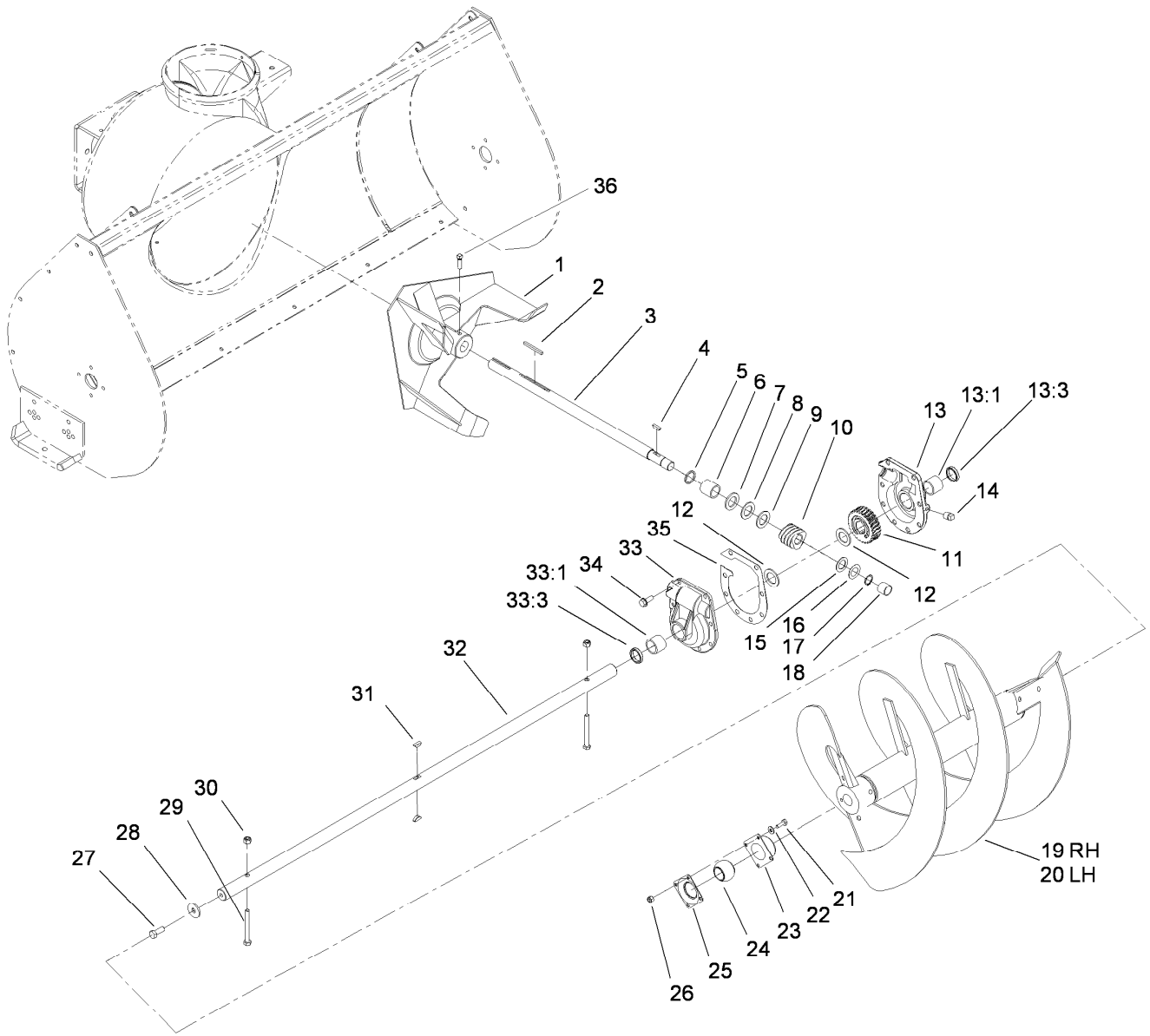


1 = Items Included in Seal Kit

Hydraulic Motor Assembly No. 117-6373 (continued)

<i>Ref.</i>	<i>Part Number</i>	<i>Qty.</i>	<i>Description</i>	<i>Ref.</i>	<i>Part Number</i>	<i>Qty.</i>	<i>Description</i>
1	1-000119	1	Seal Kit	1:4		1	Washer-Back Up (Steel) ●
1:1		1	Ring-Back Up ●	1:5		5	Ring-Seal (Viton) ●
1:2		1	Seal-Commutator ●	1:7		1	Seal-Dirt And Water ●
1:3		1	Seal-Shaft (Viton) ●	2	13-2840	1	Key-Square

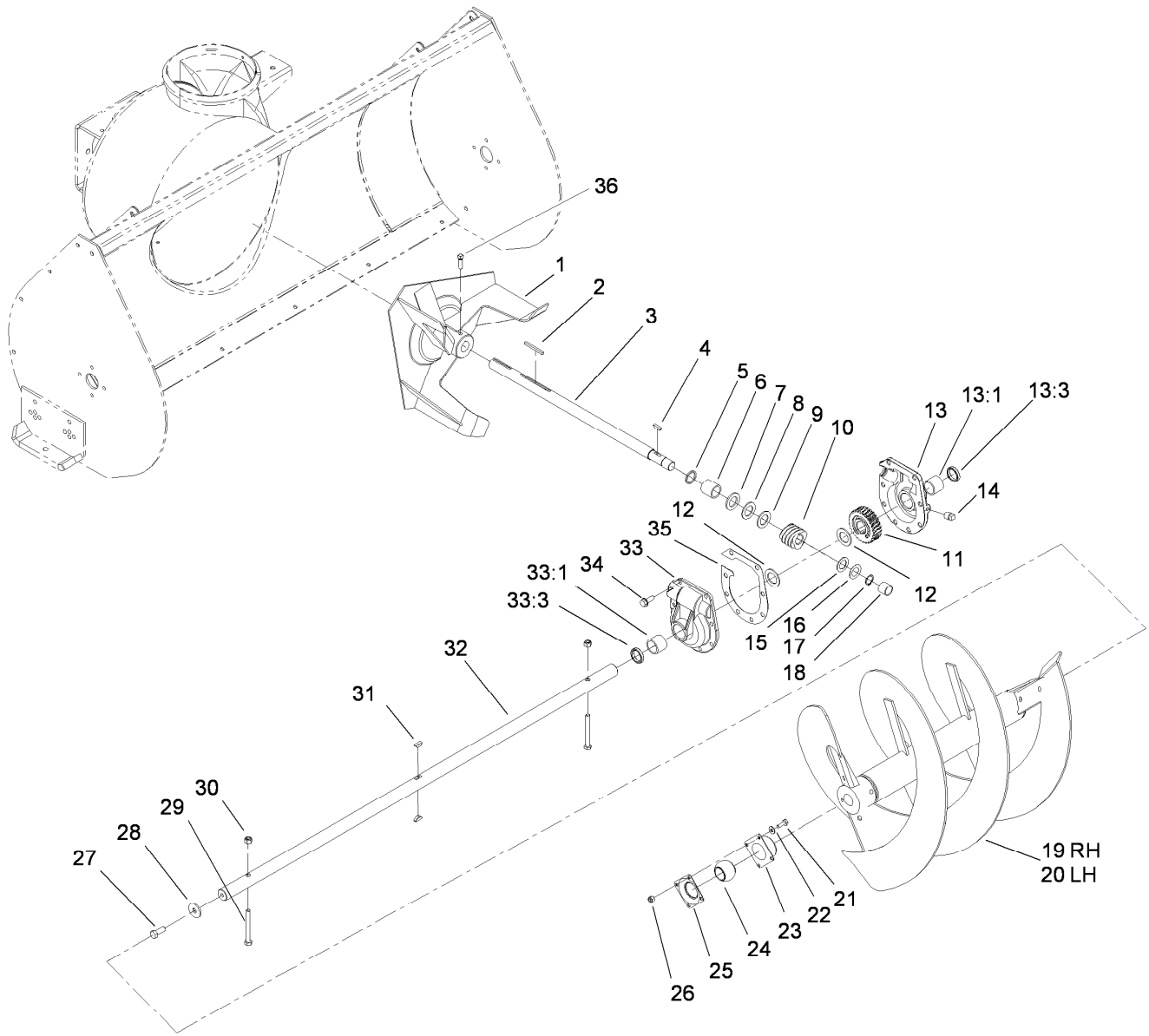
● Not serviced separately



Auger and Gearcase Assembly

Ref.	Part Number	Qty.	Description	Ref.	Part Number	Qty.	Description
1	19-8890-01	1	Impeller ASM	17	32120-72	1	Ring-Snap
2	6-8590	1	Key	18	256-32	1	Bushing
3	19-8540	1	Shaft-Impeller	19	57-3300-01	1	RH Auger ASM
4	3257-23	1	Key-Woodruff	20	57-3370-01	1	LH Auger ASM ●
5	237-87	1	Ring-Quad	21	321-4	8	Screw-HH
6	20-3210	1	Bushing-Special	22	3256-22	8	Washer-Flat
7	252-78	1	Washer-Thrust	23	20-0990	2	Bearing-Flange, Front
8	252-76	1	Bearing-Thrust	24	20-0980	2	Bearing
9	252-77	1	Thrust-Washer	25	20-1000	2	Bearing-Flange, Rear
10	5-7170	1	Gear	26	3296-42	8	Nut-Lock, NI
11	5-7180	1	Gear-Worm, 27T	27	3235-22	2	Screw-HH, Lock
12	252-71	2	Washer-Thrust	28	2844	2	Washer
13	37-8860	1	LH Gear Case ASM	29	322-14	2	Screw-HH
13:1	256-237	1	Bushing	30	3296-29	2	Nut-Lock, NI
13:3	7-0045	1	Seal-Oil	31	3257-33	2	Key-Woodruff
14	281-1	1	Plug-Pipe, SQH	32	57-3500	1	Shaft-Auger
15	3-8664	1	Washer-Thrust	33	37-8850	1	RH Gear Case ASM
16	5210	1	Washer-Shim	33:1	256-237	1	Bushing

● Not illustrated

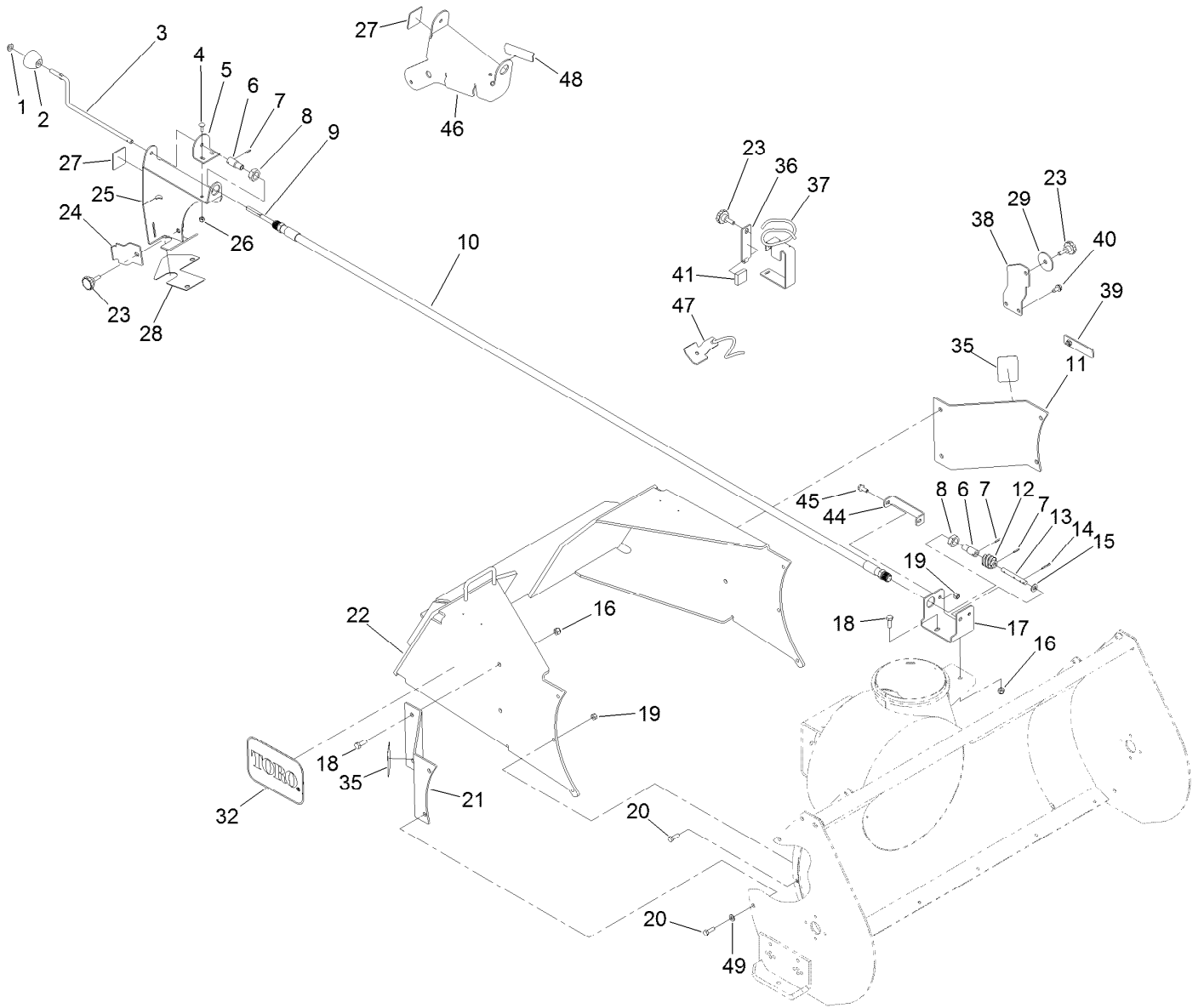


Auger and Gearcase Assembly (continued)

<i>Ref.</i>	<i>Part Number</i>	<i>Qty.</i>	<i>Description</i>
33:3	7-0045	1	Seal-Oil
34	32144-41	8	Screw-Taptite

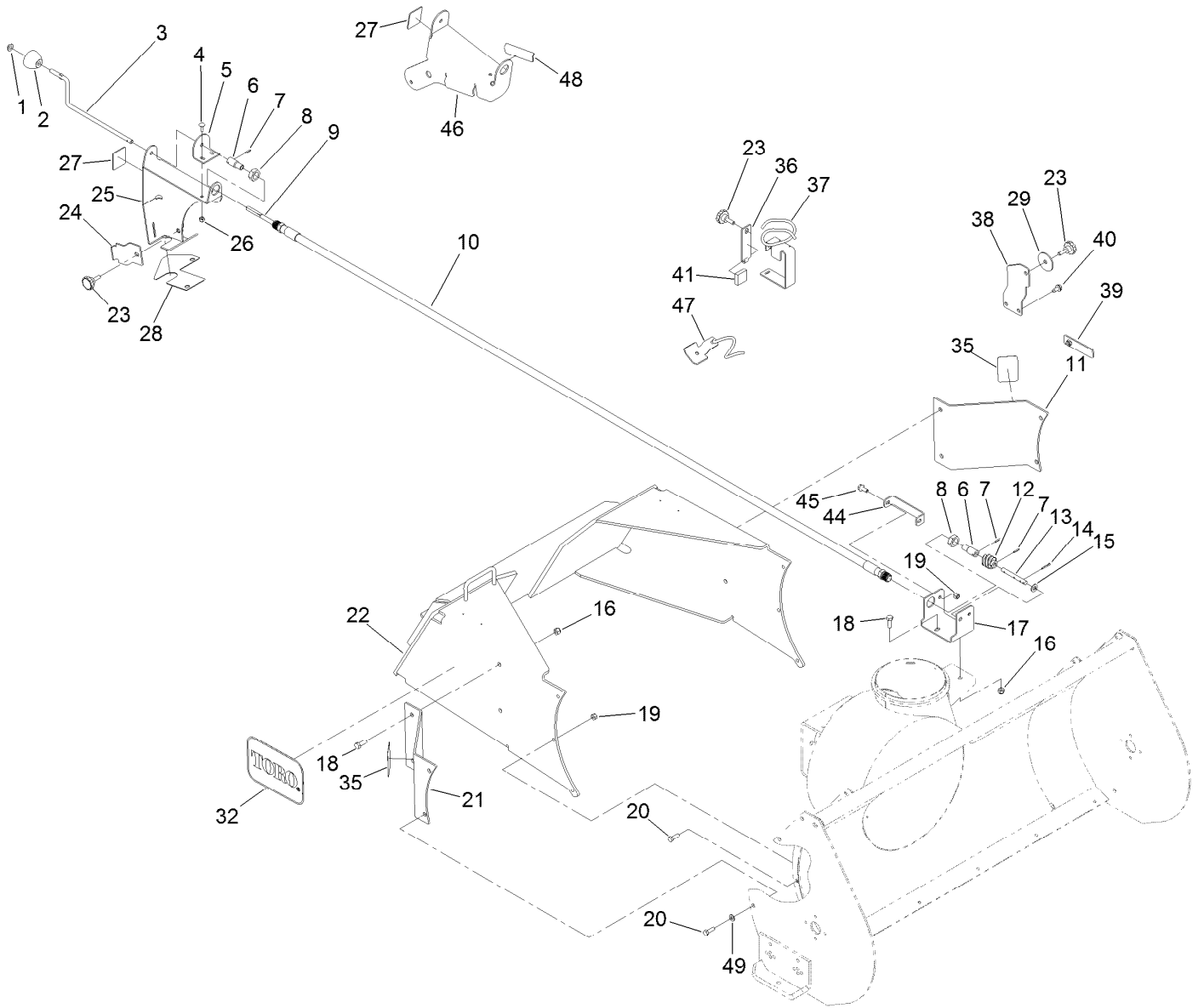
<i>Ref.</i>	<i>Part Number</i>	<i>Qty.</i>	<i>Description</i>
35	105-1404	1	Gasket-Gear Box
36	3242-6	2	Screw-Set, SQH

● Not illustrated



Crank and Mounting Assembly

Ref.	Part Number	Qty.	Description	Ref.	Part Number	Qty.	Description
1	3290-320	1	Nut-Push	22	133-1635-01	1	Mount-Snowthrower
2	61-4890	1	Knob-Chute	23	99-6137	3	Knob-Control, Chute
3	99-5906	1	Rod-Control, Chute	24	99-5907-01	1	Bracket-Clamp
4	3229-1	2	Bolt-CARR	25	99-5909-01	1	Bracket-Control, Chute
5	99-5904-01	1	Bracket-Rod, Support	26	3296-42	2	Nut-Lock, NI
6	61-4940	2	Coupler	27	63-3510	2	Decal-Chute Direction
7	32121-50	3	Pin-Spring	28	99-6139	1	Foam-Chute, Control
8	353-955	2	Locknut	29	83-1040	1	Washer-Flat
9	99-4978	1	Shaft-Flexible	32	62-7400	2	Decal
10	99-4979	1	Hose ASM	35	100-4627	2	Reflector
11	133-1626-01	1	Plate-Extension, LH	36	112-2615-03	1	Bracket-Retainer
12	8-8600	1	Gear-Worm, Chute	37	112-2617-03	1	Retainer-Hose
13	61-4950	1	Shaft-Gear, Worm	38	100-4620-01	1	Bracket, Clamp
14	3272-10	1	Pin-Cotter	39	100-4621-01	1	Plate-Retainer
15	3256-24	1	Washer-Flat	40	32144-70	2	Screw-HWHTF
16	3296-39	6	Nut-Lock, NI	41	112-2616	1	Pad-Retainer, Bracket
17	133-1644-01	1	Bracket-Worm Gear	44	132-1679-01	1	Bracket-Stiffener
18	323-6	6	Screw-HH	45	3234-47	2	Screw-HHF
19	3296-29	8	Nut-Lock, NI	46	131-9289-01	1	Bracket-Chute Crank
20	322-5	10	Screw-HH	47	131-9293-03	1	Guide ASM
21	133-1627-01	1	Plate-Extension, RH				



Crank and Mounting Assembly (continued)

Ref.	Part Number	Qty.	Description
48	132-8772	1	Foam-Chute Control
49	3256-23	4	Washer-Plain

Attachments and Accessories

For 22456 Snowthrower Compact Tool Carrier

Product Name

Model/Part

Flush Face Adapter Kit 100-4744

Notes:

Notes:

Notes:



Count on it.