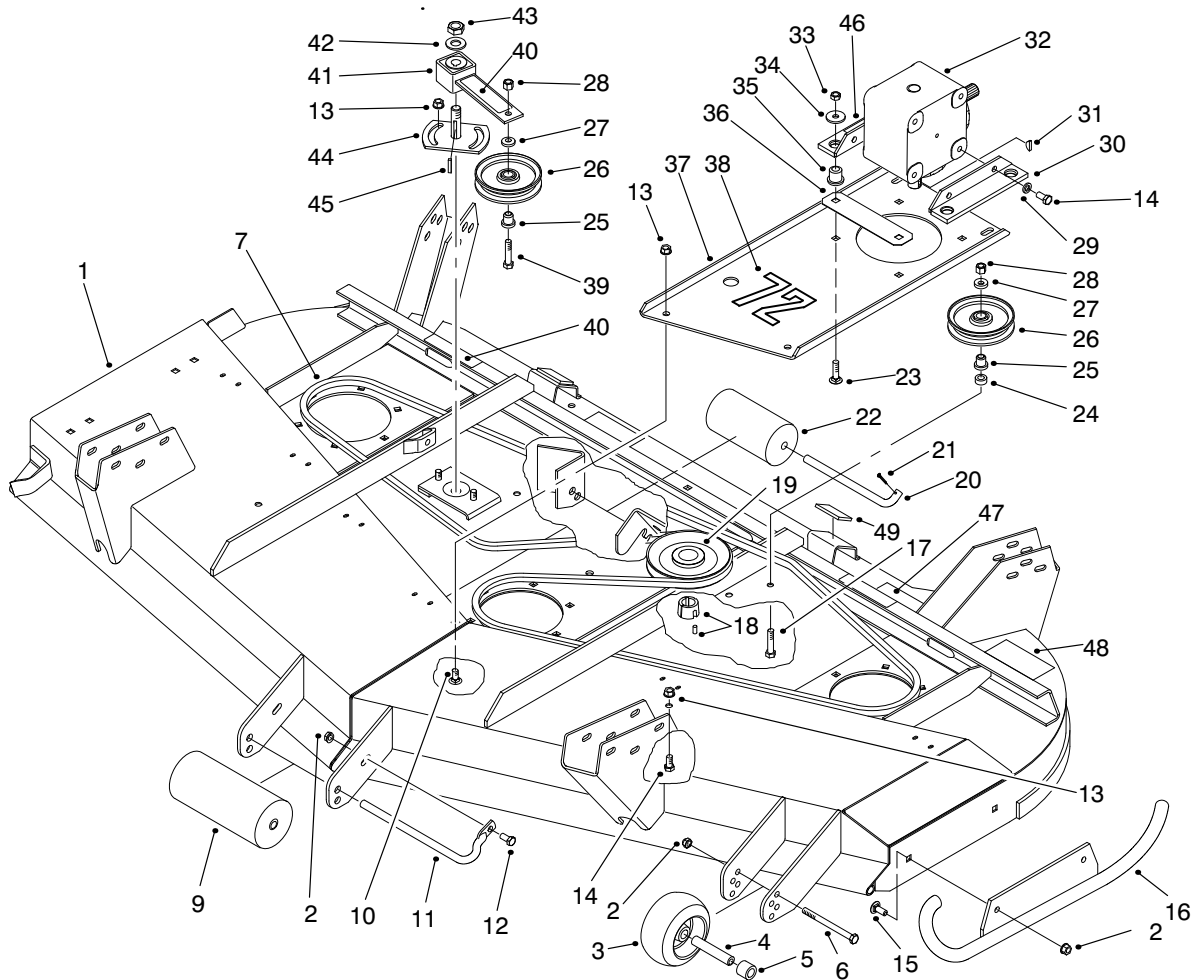




MODEL NO. 30553-80001 & UP

PARTS
CATALOG

72" SIDE DISCHARGE CUTTING UNIT
For Groundsmaster® 200 Series

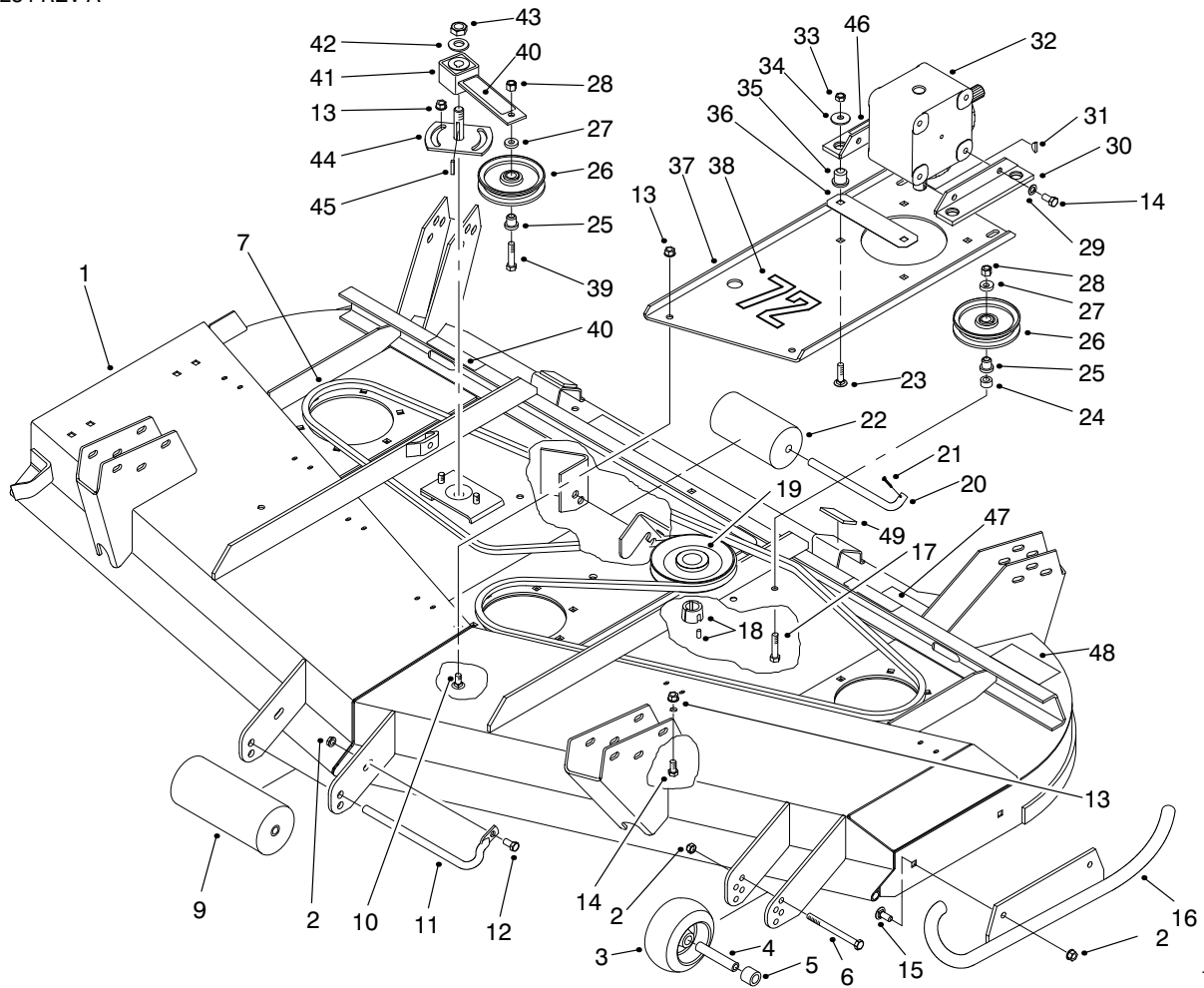


T-2939-2

DECK ASSEMBLY

Ref. No.	Part No.	Description	No. Used
1	99-1278	Asm-Deck (Incl. Ref. #	1
2	32128-19	Nut-Hex.	4
3	68-2730	Wheel-Gage	1
4	98-7912	Spanner	1
5	98-7913	Spacer	1
6	323-23	Screw-HH	1
7	57-0240	V-Belt	1
9	68-6710	Roller-Deck	1
10	3231-27	Bolt-CARR	4
11	68-6840	Shaft-Roller	1
12	3234-1	Screw-HHF	1
13	3290-357	Nut-HHF	8
14	323-4	Screw-HH	6
15	3231-22	Bolt-CARR	2
16	98-7923	Skid	1
17	3211-9	Screw-HH	1

Ref. No.	Part No.	Description	No. Used
18	27-6140	Bushing-Taperlock	1
19	63-9900	Pulley-Gearbox	1
20	40-0340	Shaft-Roller, Rear	2
21	3272-11	Pin-Cotter	3
22	36-1740	Roller-Deck	2
23	3231-26	Bolt-CARR	4
24	44-6390	Spacer	1
25	65-5950	Bushing-Pulley	2
26	65-5940	Pulley-Idler	2
27	7-0081	Washer-Special	2
28	3296-5	Nut-Lock	2
29	3253-21	Washer-Lock	4
30	68-8560	Bracket-Gear Box	2
31	3257-5	Key-Woodruff	1
32	68-6810	Gear Box	1
33	32153-2	Nut-Lock	4
34	63-8410	Washer-Flat	4



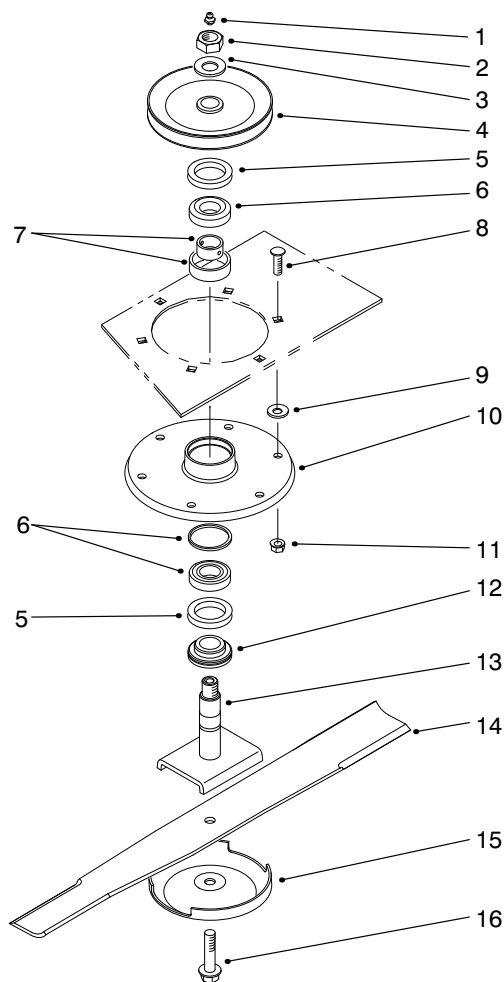
T-2939-2

DECK ASSEMBLY (Continued)

Ref. No.	Part No.	Description	No. Used
35	63-9750	Mount-Rubber	4
36	68-9890	Cover-Gear Box, Front	1
37	68-8530	Base-Gear Box	1
38	57-0280	Decal-72"	1
39	3211-8	Screw-HH	1
40	67-5360	Decal-Danger	3
41	27-8580	Asm-Socket, Idler	1
42	3256-27	Washer-Flat	1

Ref. No.	Part No.	Description	No. Used
43	3296-33	Nut-Lock	1
44	44-6300	Plate-Idler	1
45	5-1077	Key-Square	1
46	70-2560	Decal-Lube	1
47	68-8340	Decal-Torque	1
48	92-8778	Decal-Warning	1
49	74-0340	Cushion-Rubber	2

*Not Illustrated

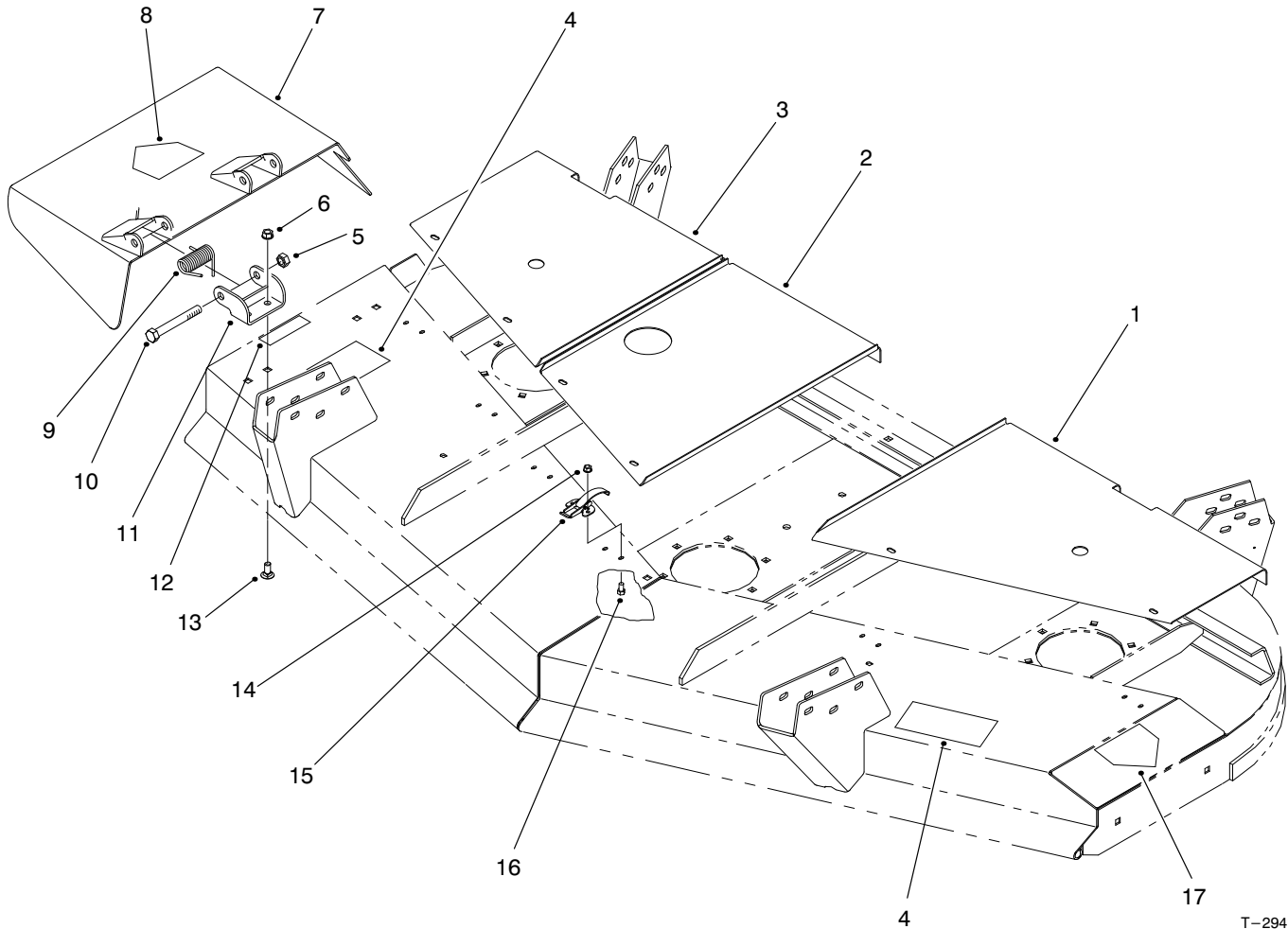


T-2940-2

SPINDLE ASSEMBLY

Ref. No.	Part No.	Description	No. Used	Ref. No.	Part No.	Description	No. Used
1	302-2	Fitting-Grease	3	9	3256-24	Washer-Flat	AR
2	32146-20	Nut-Lock, Jam	3	10	61-4160	Spindle	3
3	7-4150	Washer	3	11	32128-21	Nut-Lock HFH	18
4	57-0560	Asm-Pulley & Hub	3	12	27-0950	Spacer-Bearing, Spindle	3
5	253-139	Seal-Oil	6	13	27-0920	Shaft-Spindle	3
6	27-0960	Asm-Bearing	3	14	94-1861	Blade	3
7	27-5970	Spacer-Matched Set	3	15	72-9360	Cup-Anti Scalp	3
8	3231-22	Bolt-CARR	18	16	92-5816	Screw-Blade	3

*Not Illustrated

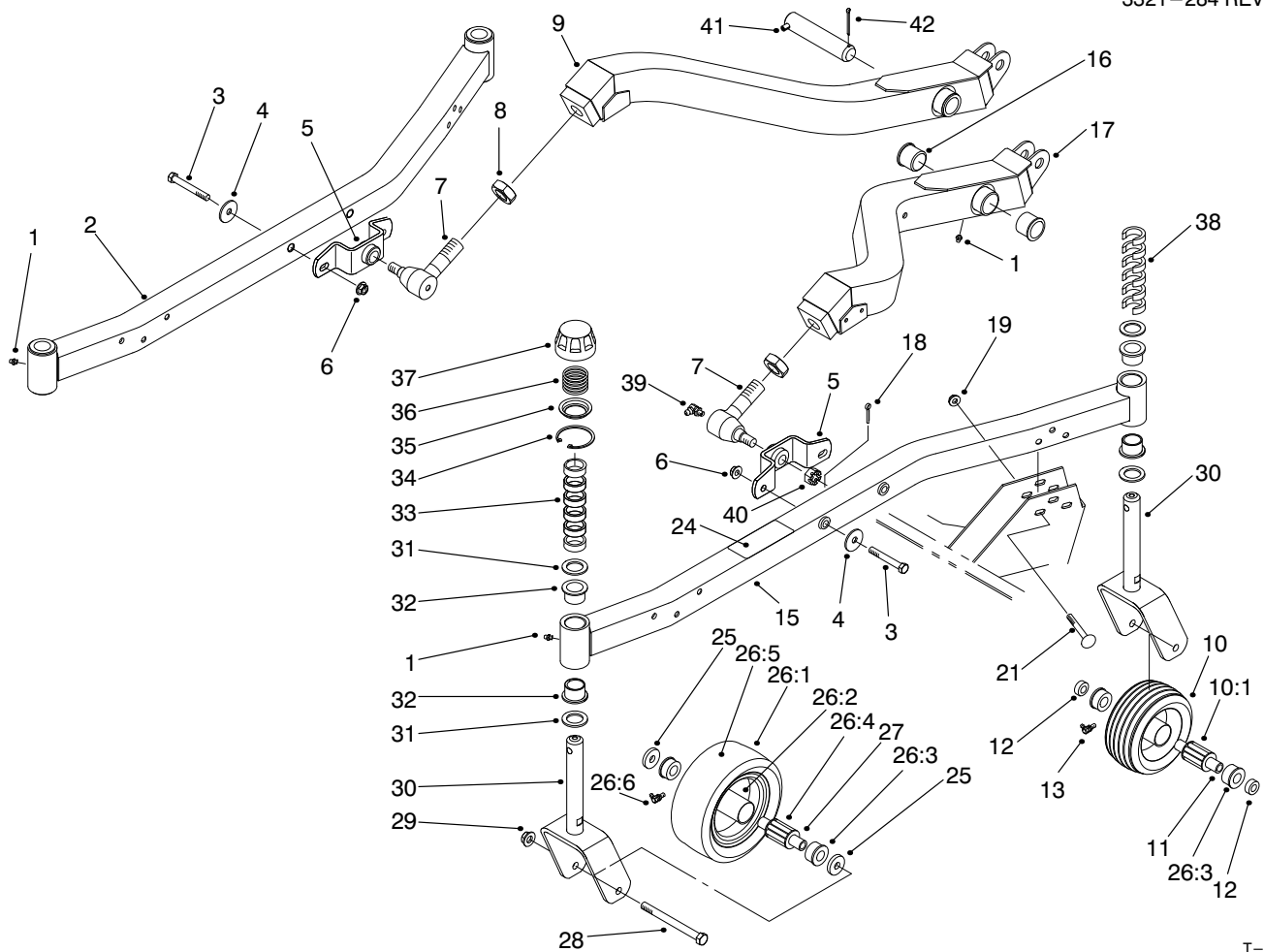


T-2941

COVERS & DEFLECTOR ASSEMBLY

Ref. No.	Part No.	Description	No. Used
1	98-7930	Cover-Belt LH	1
2	57-0210	Cover-Center	1
3	98-7928	Cover-Belt RH	1
4	66-1340	Decal-Discharge	2
5	32153-5	Nut-Lock	2
6	3290-357	Nut-HFH	4
7	14-0909	Asm-Deflector (Incl. Ref. #3)	1
8	54-9220	Decal-Danger	1

Ref. No.	Part No.	Description	No. Used
9	51-1550	Spring	2
10	325-17	Screw-HH	2
11	51-1530	Bracket-Hinge	2
12	66-6380	Decal-Danger	1
13	3231-27	Bolt-Carriage	4
14	32128-17	Nut-Lock	12
15	249-21	Latch-Draw	6
16	3290-321	Screw-Hex Slotted Hd.	12
17	43-8480	Decal-Danger	1

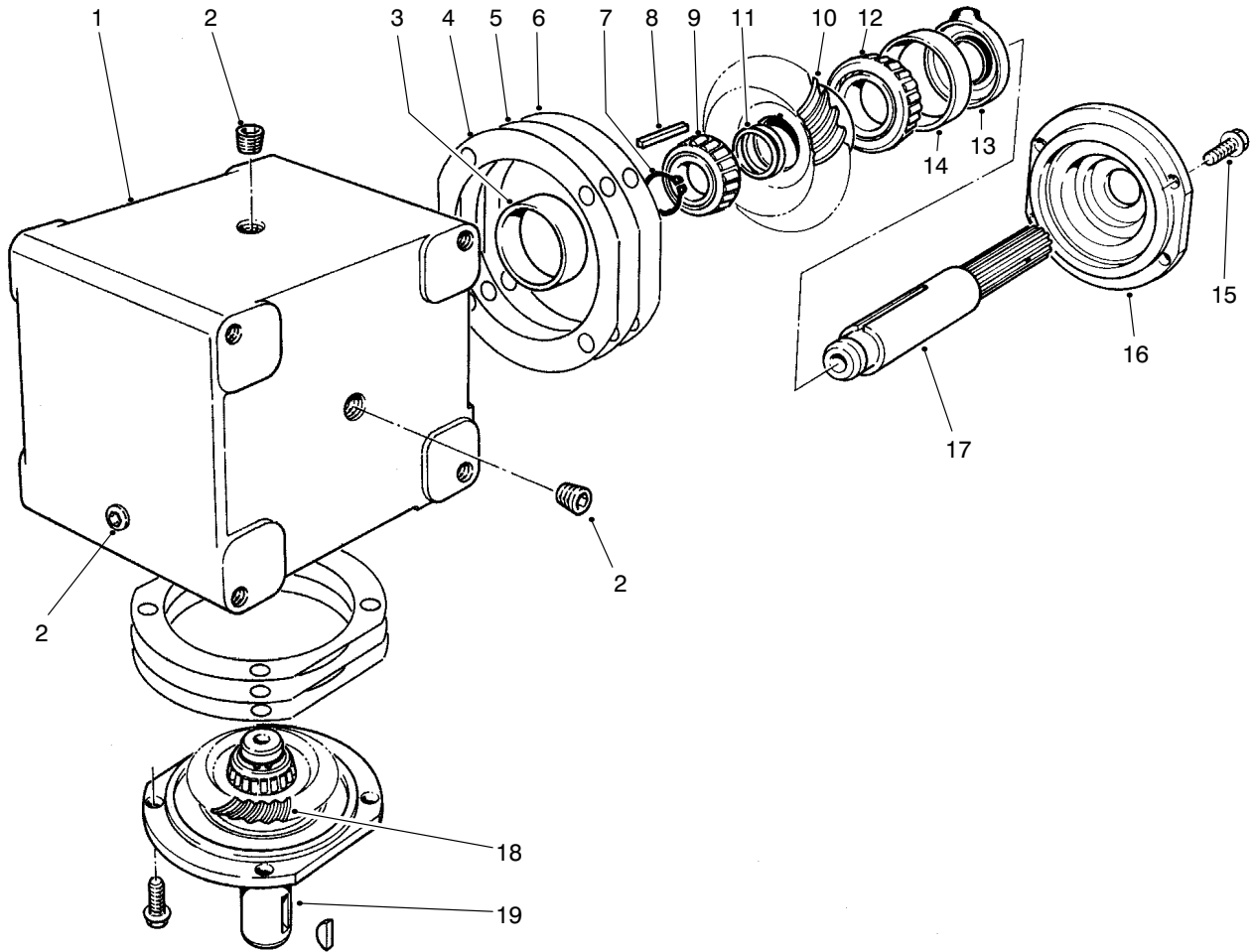


T-2942

CARRIER FRAME ASSEMBLY

Ref. No.	Part No.	Description	No. Used	Ref. No.	Part No.	Description	No. Used
1	302-5	Fitting-Grease	6	26	99-1268	Asm-Wheel & Tire	2
2	98-7936	Arm-Castor RH	1	26:1	93-9939	Tire 8"	1
3	324-12	Screw-HH	4	26:2		Asm-Rim	1
4	66-6480	Washer	4	26:3	62-5580	Bearing-Outside	2
5	98-7944	Mount-Ball Joint	2	26:4	62-5570	Bearing-Roller	1
6	32128-42	Nut-HFH	4	26:5	68-8950	Tube-W/Valve	1
7	86-8100	Ball Joint (Incl. Ref. #39 & 40)	2	26:6	302-11	Fitting-Grease	1
8	21-3000	Nut-Jam	2	27	68-8980	Bushing-Spanner	2
9	98-7901	Arm-Lift, RH	1	28	325-19	Screw-HH	4
10	63-8400	Wheel-Castor (Incl. Ref #10:1, 13 & 26:3)	2	29	32128-23	Nut-HFH	4
10:1	63-8580	Bearing-Roller	2	30	98-7921	Asm-Fork, Castor	4
11	63-1770	Bushing-Spanner	2	31	3-6781	Washer-Thrust	8
12	99-1291	Spacer	4	32	94-1291	Bushing-Special	8
13		Fitting-Grease	2	33	63-0070	Spacer	12
15	98-7935	Arm-Castor LH	1	34	92-5581	Ring-Retaining, Internal	4
16	256-268	Bushing-Flange	4	35	92-5583	Washer-Cap	4
17	98-7904	Arm-Lift LH	1	36	92-5584	Spring-Compression	4
18	3272-12	Pin-Cotter	2	37	92-8861	Cap-Height-Of-Cut	4
19	32128-19	Nut-HFH	12	38	99-1283	Spacer	12
21	3231-10	Bolt-CARR	12	39	302-40	Fitting-Grease 90°	2
24	92-3035	Decal-Low Height-Of-Cut	1	40	32136-2	Nut-Hex. Slotted	2
25	70-8040	Washer-Flat	4	41	98-2330	Asm-Pivot Pin	2
				42	3272-19	Pin-Cotter	2

*Not Illustrated

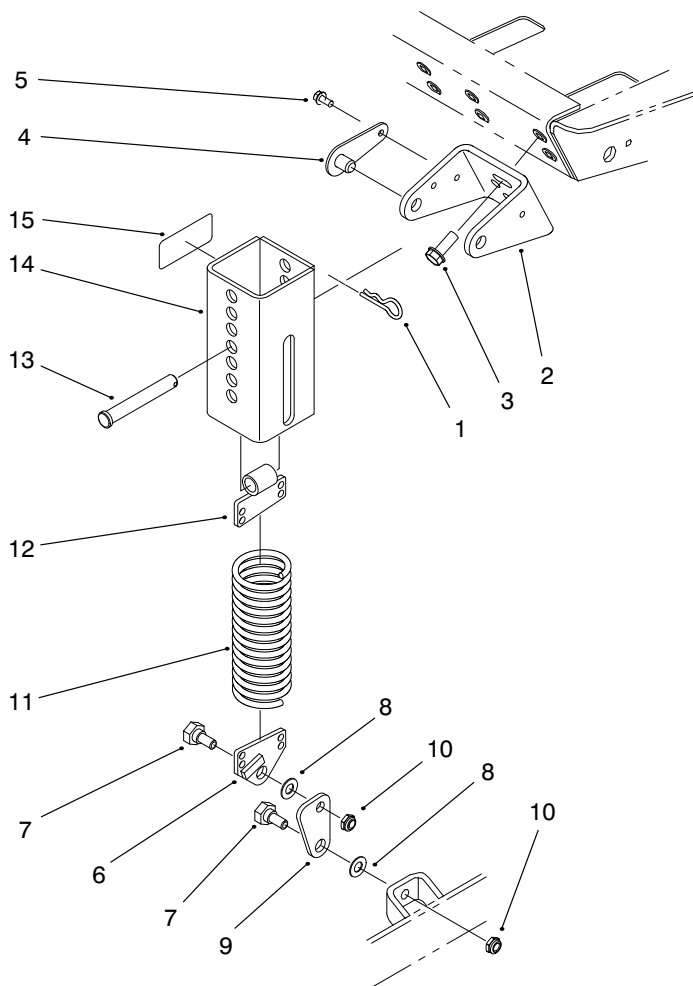


T-0977-2

GEAR BOX ASSEMBLY NO. 68-6810

Ref. No.	Part No.	Description	No. Used
1	68-7030	Housing	1
2	62-3490	Plug-Pipe (Solid)	4
3	62-3360	Cup-Bearing	2
4	62-3420	Gasket (.015 in.)	A/R
5	62-3430	Gasket (.005 in.)	A/R
6	62-3440	Gasket (.003 in.)	A/R
7	68-7070	Ring-Retaining	2
8	62-3380	Key	2
9	62-3370	Cone-Bearing	2
10	68-7080	Gear	1

Ref. No.	Part No.	Description	No. Used
11	72-9370	Shim (.020 in.)	4
12	62-3330	Cone-Gear	1
13	62-3400	Seal	2
14	62-3340	Cup-Bearing	2
15	62-3310	Screw-Cap	8
16	62-3410	Cap	2
17	68-7040	Shaft	1
18	68-7060	Gear	1
19	68-7050	Shaft	1



T-2486-4

COUNTERBALANCE ASSEMBLY

Ref. No.	Part No.	Description	No. Used	Ref. No.	Part No.	Description	No. Used
1	3290-355	Pin-Hair, Cotter	2	9	66-8440	Link-Knee	2
2	66-8230	Bracket-Support	2	10	3296-44	Nut-Lock	4
3	3234-11	Screw-HFH	4	11	66-8390	Spring-Extension	2
4	70-7920	Asm-Pin, Lock	4	12	70-7940	End-Spring	2
5	12-3270	Screw-Self Tapping	4	13	283-69	Pin-Clevis	2
6	66-8420	End-Spring	2	14	70-7970	Asm-Spring Cover	2
7	46-3380	Bolt-Shoulder	4	15	55-4300	Decal-Warning	4
8	3256-24	Washer-Flat	4				

