



Count on it.

Parts Catalog

30in Stand-On Aerator

Model No. 29519—Serial No. 40000000 and Up



Ordering Replacement Parts

To order replacement parts, please supply the part number, the quantity, and the description of each part desired.

Understanding Reference Numbers

Each identified part in an illustration has a reference number. The reference number for a part also appears in the parts list, along with other information about the part.

This catalog uses two special reference number formats, one to indicate parts in a service assembly and another to indicate the quantity of a given part in an illustration.

Service Assembly Reference Numbers

Parts in service assemblies have reference numbers in the form a:b. The a represents the reference number of the entire service assembly and the b represents a sequential number unique to each part within the service assembly.

For example, a wheel assembly might be identified by reference number 6, the tire by 6:1, the valve by 6:2, and the wheel by 6:3. When you order the assembly identified by reference number 6, you receive all parts identified by reference numbers 6:1, 6:2, and 6:3. However, you may also order any part individually. Reference numbers of this type appear in illustration and in parts lists.

Reference Numbers Indicating Quantity

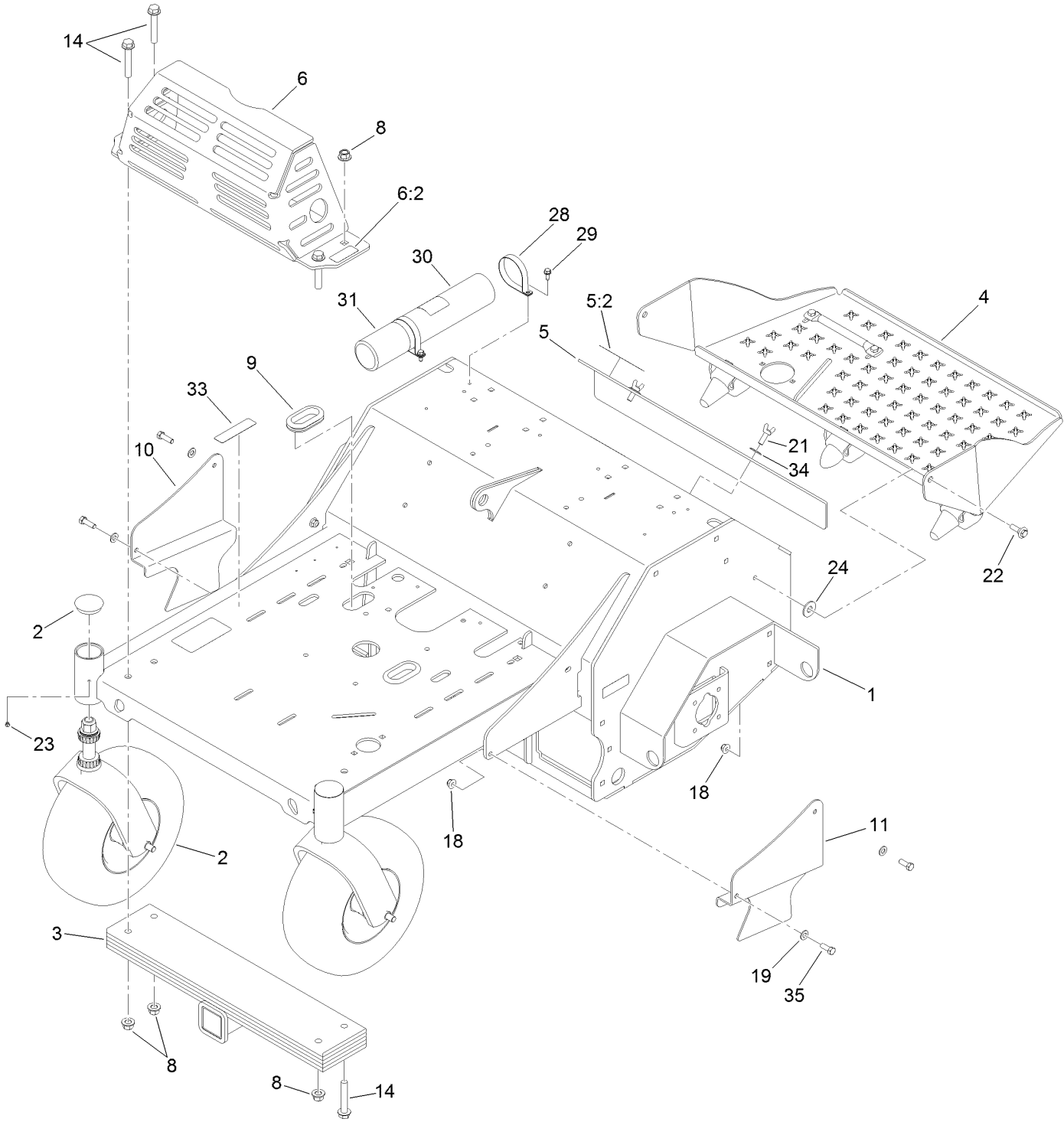
In an illustration, if a reference number indicates more than one part, the reference number has the form nX y. The n represents the quantity of the part, the X is the multiplication symbol, and the y represents the reference number.

For example, in an illustration, the reference number 2X 37 means that two of the parts identified by reference number 37 are indicated.

Contents

Main Frame Assembly	4
Main Frame Decal Assembly No. 116-8138	6
Caster Wheel and Fork Assembly	8
Platform Assembly No. 116-9135	10
Tower Assembly	12
Ground Drive Assembly	14
Idler Arm Assembly No. 116-9307	16
Axle and Bearing Assembly No. 116-9545	18
Tine Assembly	20
RH Tine Wheel Assembly No. 116-6738	22
LH Tine Wheel Assembly No. 116-6739	24
Fuel Assembly	26
Motion Control Assembly	28
Electrical Assembly	30
Auxiliary Hydraulic Assembly	32
Manifold W/Check and Relief Valve Assembly No. 116-9549	34
Hydraulic Cylinder Assembly No. 116-6969	36
Hydraulic Pump Assembly No. 116-9129	38
Engine Assembly	40

Main Frame Assembly

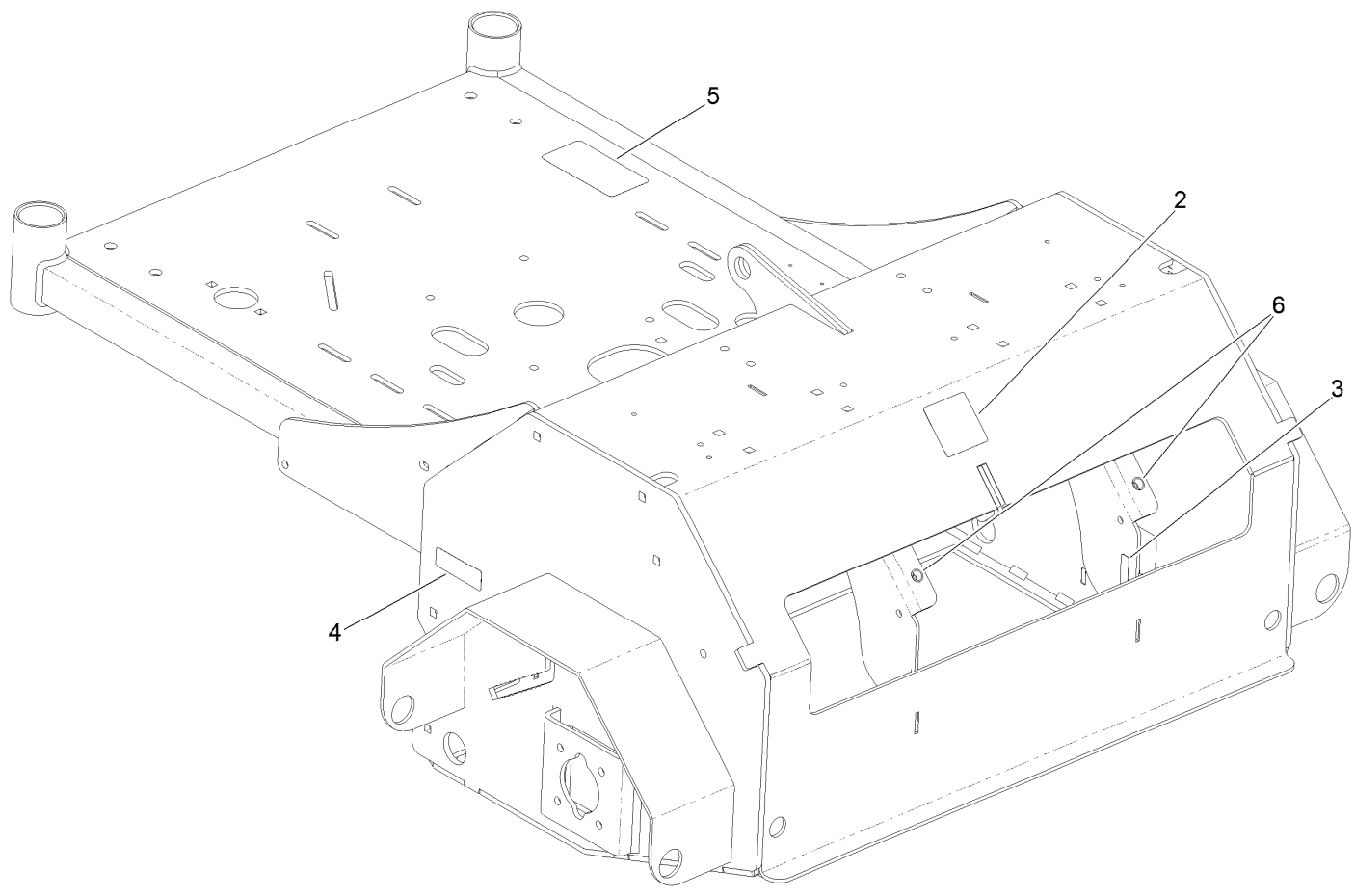


Main Frame Assembly (continued)

<i>Ref.</i>	<i>Part Number</i>	<i>Qty.</i>	<i>Description</i>	<i>Ref.</i>	<i>Part Number</i>	<i>Qty.</i>	<i>Description</i>
1	116-8138	1	Main Frame ASM	18	104-8301	6	Nut-HF, NI
2		2	Front Caster ASM ●	19	3256-24	4	Washer-Flat
3	116-6536-01	1	Weight	21	126-6752	2	Screw-Thumb
4	116-9135	1	Platform W/Rocker ASM	22	614672	2	Screw-Shoulder, HWH
5	116-7300	1	Access Cover ASM	23	1-811010	2	Plug
5:2	121-6163	1	Decal-Operation, Tine Ground (CE)	24	3256-6	2	Washer-Flat
6	116-8258	1	Muffler Guard ASM	28	107-1865	2	R-Clamp
6:2	115-2047	2	Decal-Surface, Hot	29	32144-10	2	Screw-HWH
8	99-5107	4	Nut-Lock	30	104-7050	1	Tube-Manual
9	126-0015	2	Grommet	31	104-7048	1	Cap-Housing
10	116-6612-01	1	Guard-Chain, RH	33	117-2718	1	Decal-Arrester, Spark
11	116-6611-01	1	Guard-Chain, LH	34	3290-461	2	Washer-Spring
14	3234-40	4	Screw-HF	35	323-6	4	Screw-HH

● Not serviced separately

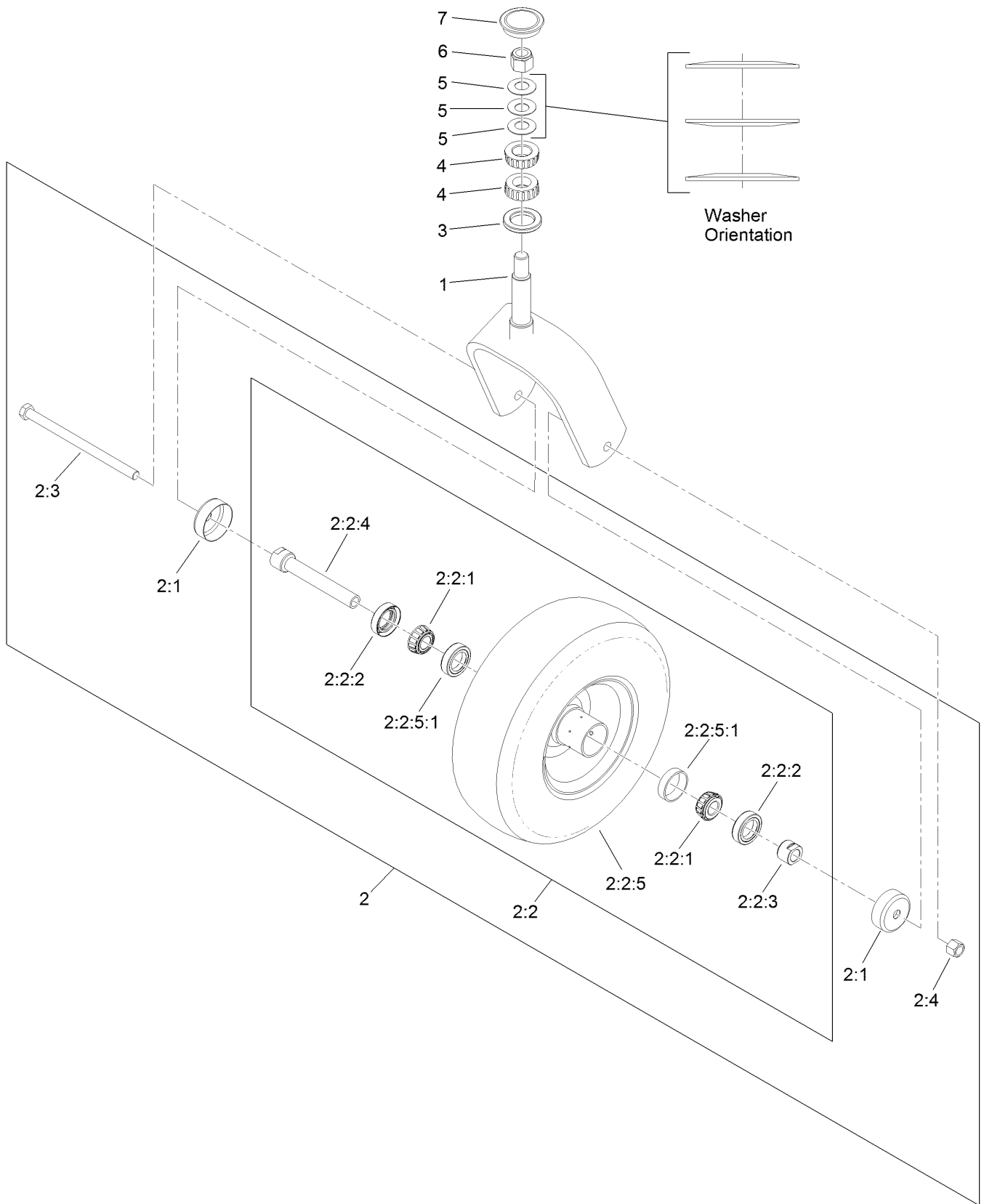
Main Frame Decal Assembly No. 116-8138



Main Frame Decal Assembly No. 116-8138 (continued)

<i>Ref.</i>	<i>Part Number</i>	<i>Qty.</i>	<i>Description</i>	<i>Ref.</i>	<i>Part Number</i>	<i>Qty.</i>	<i>Description</i>
2	121-6150	1	Decal-Warning	5	116-9391	1	Decal-Belt Routing
3	120-9570	1	Decal-Warning	6	32148-10	2	Insert-Nut
4	121-6161	2	Decal-Danger				

Caster Wheel and Fork Assembly



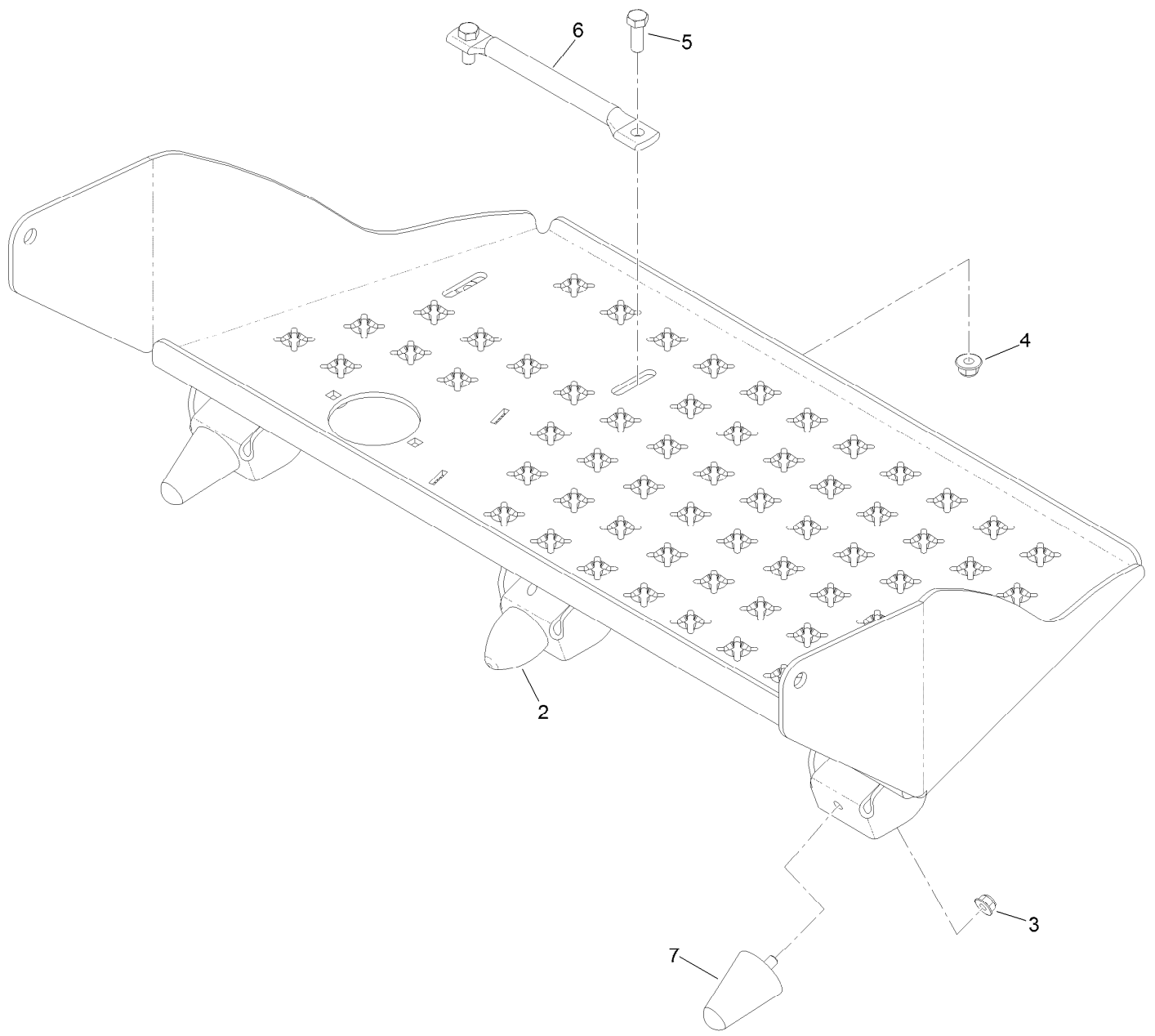
Caster Wheel and Fork Assembly (continued)

<i>Ref.</i>	<i>Part Number</i>	<i>Qty.</i>	<i>Description</i>	<i>Ref.</i>	<i>Part Number</i>	<i>Qty.</i>	<i>Description</i>
1	116-6704-01	1	Caster	2:2:5:1	1-633584	2	Bearing-Cup
2	127-9531	1	Wheel And Axle ASM	2:3	325-42	1	Screw-HH
2:1	103-2768	2	Guard-Seal	2:4	3296-23	1	Nut-Lock, NI
2:2		1	Wheel And Bearing ASM ●	3	1-543511	1	Seal-Grease
2:2:1	1-633585	2	Bearing-Cone, Taper	4	1-543509	2	Bearing-Roller, Tapered
2:2:2	103-0063	2	Seal-Caster	5	1-633508	3	Washer-Bellville
2:2:3	103-3051	1	Spacer-Nut ■	6	3296-51	1	Nut-Lock, NI
2:2:4	126-5360	1	Axle-Caster	7	103-4882	1	Cap-Grease
2:2:5		1	Wheel And Tire ASM ●				

● Not serviced separately

■ Use Pro-Lock, Nut Type (P/N 1-840022, .5ml tube) on threads.

Platform Assembly No. 116-9135

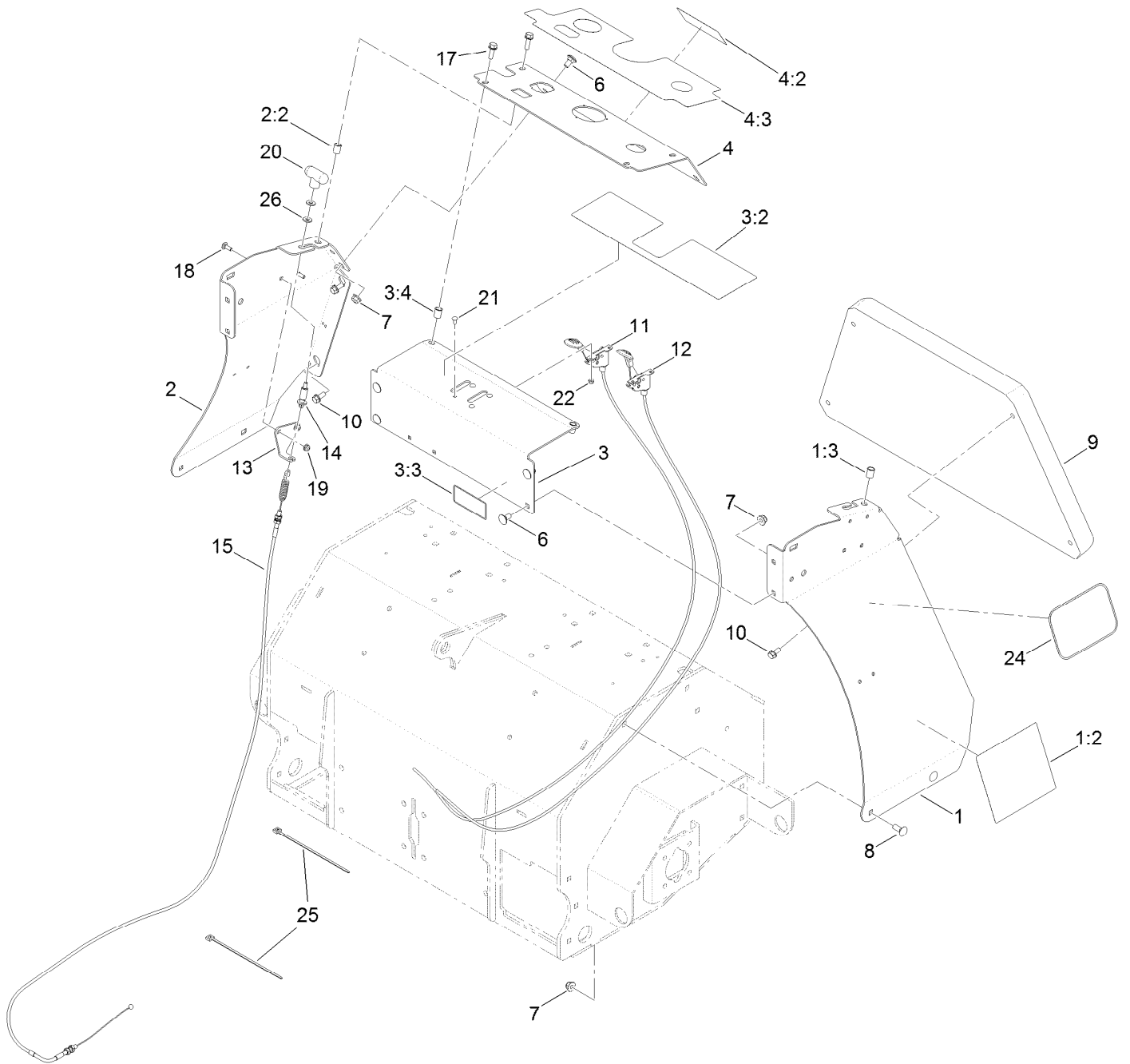


Platform Assembly No. 116-9135 (continued)

<i>Ref.</i>	<i>Part Number</i>	<i>Qty.</i>	<i>Description</i>
2	114-1926	1	Bumper-Rubber
3	104-8300	3	Nut-HF, NI
4	104-8301	2	Nut-HF, NI

<i>Ref.</i>	<i>Part Number</i>	<i>Qty.</i>	<i>Description</i>
5	323-6	2	Screw-HH
6	116-8950-01	1	Rocker-Pedal, Foot
7	114-1925	2	Bumper-Rubber

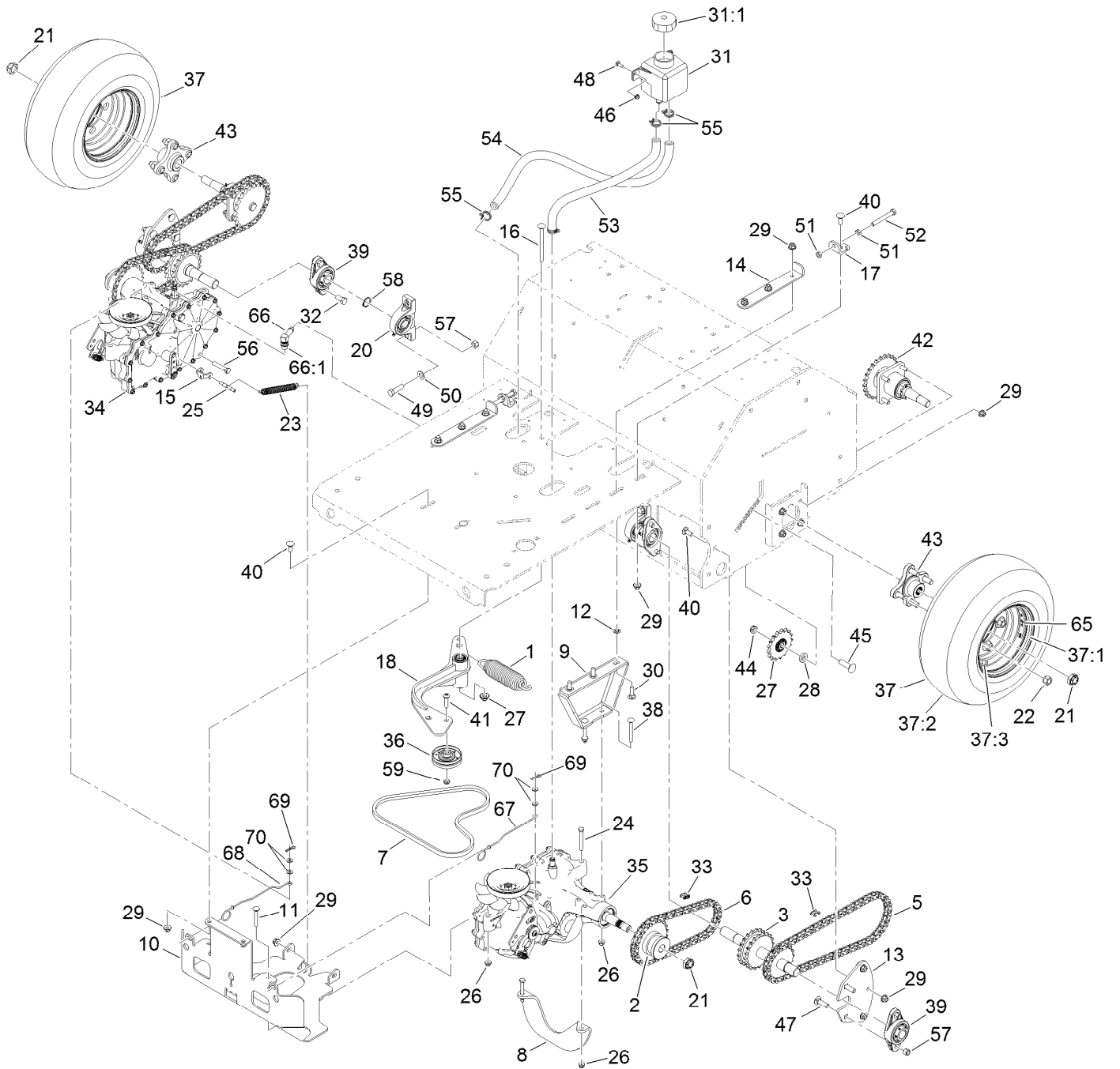
Tower Assembly



Tower Assembly (continued)

<i>Ref.</i>	<i>Part Number</i>	<i>Qty.</i>	<i>Description</i>	<i>Ref.</i>	<i>Part Number</i>	<i>Qty.</i>	<i>Description</i>
1	116-9387	1	LH Side Panel ASM	9	116-6959	1	Cushion-Black
1:2	116-9392	1	Decal-Service Aid CE	10	3234-5	4	Screw-HHF
1:3	32148-7	1	Nut-Insert	11	109-9147	1	Control-Choke
2	116-7657	1	RH Side Panel ASM	12	109-3958	1	Control-Throttle
2:2	32148-7	1	Nut-Insert	13	116-6630	1	Bracket-Cable, Brake
3	126-3136	1	Front Console Plate ASM	14	116-7504	1	Link-Cable, Brake
3:2	121-6164	1	Decal-Warning, Control Panel	15	116-7503	1	Cable-Brake
3:3	121-6162	1	Decal-Warning, Tines	17	3234-29	4	Screw-HHF
3:4	32148-7	2	Nut-Insert	18	3229-1	2	Bolt-CARR
4	126-4529	1	Console ASM	19	104-7201	2	Nut-HF
4:2	135-2841	1	Decal-Warning	20	116-7607	1	Knob-Tee
4:3	126-4528	1	Decal-Danger, Control Panel	21	1-807513	4	Bolt-CARR
6	3231-1	6	Screw-CARR	22	3296-2	4	Nut-Lock, NI
7	104-8301	10	Nut-HF, NI	24	62-5550	2	Decal
8	3231-2	4	Bolt-CARR	25	1-303335	2	Tie-Plastic
				26	3256-2	2	Washer-Flat

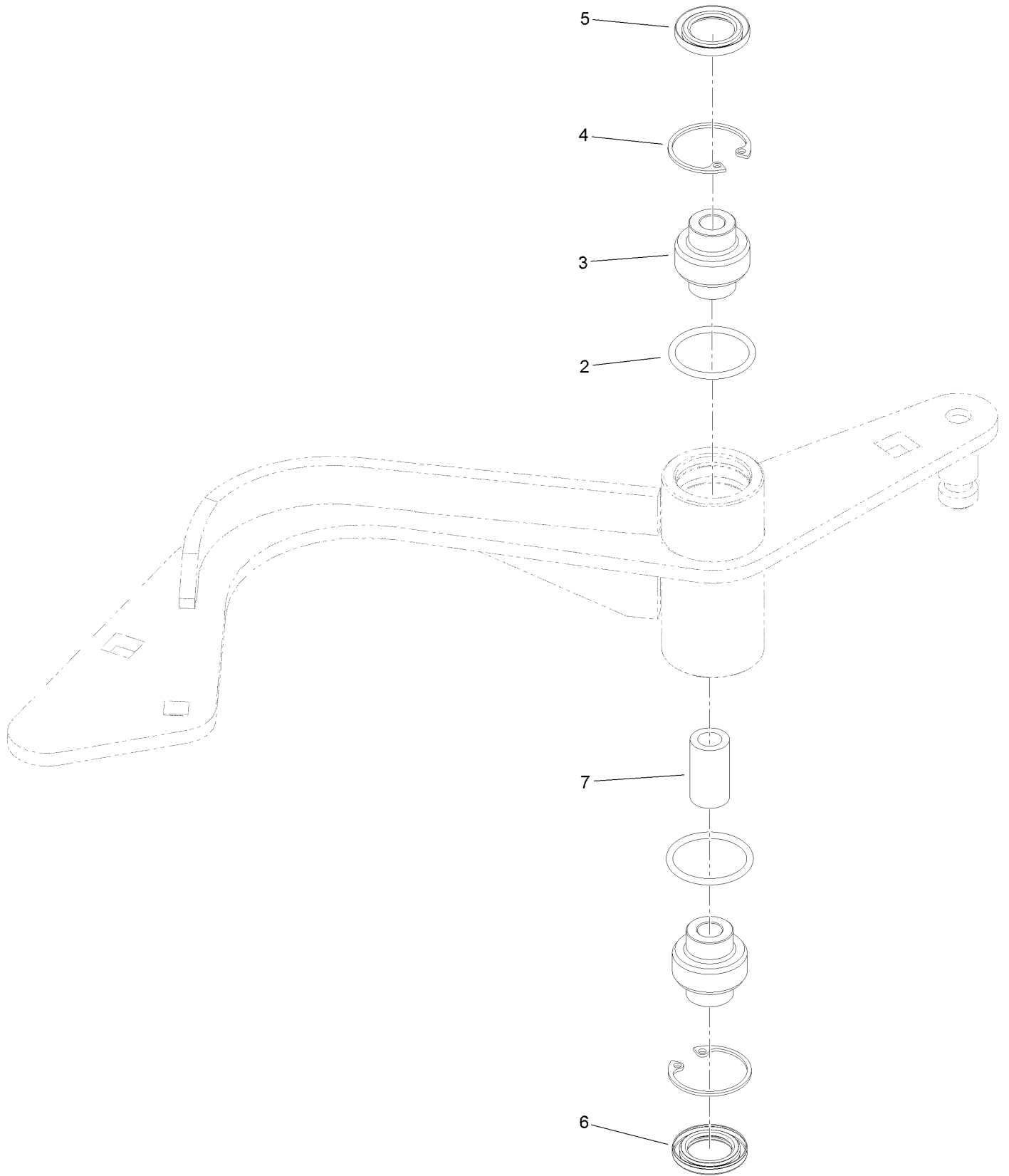
Ground Drive Assembly



Ground Drive Assembly (continued)

<i>Ref.</i>	<i>Part Number</i>	<i>Qty.</i>	<i>Description</i>	<i>Ref.</i>	<i>Part Number</i>	<i>Qty.</i>	<i>Description</i>
1	116-6317	1	Spring-Extension	36	116-9715	1	Pulley-Idler
2	116-9305	2	Hub-Drive, Chain	37	126-4267	2	Wheel And Tire ASM
3	126-5625	2	Jackshaft	37:1	126-4266	1	Rim-Gray
5	126-8808	2	Chain-Roller	37:2	116-6978	1	Tire
6	126-8807	2	Chain-Roller	37:3	232-27	1	Stem-Valve
7	116-8874	1	Belt-4L Section	38	3230-9	4	Screw-CARR
8	116-9127-03	1	Brace-Angle	39	116-6777	4	Bearing-Flange, 2 Bolt
9	116-9710-03	2	Mount-Transmission	40	3231-2	10	Bolt-CARR
10	126-5495-03	1	Guard-Transmission	41	116-9927	1	Screw-HSBH
11	3230-7	2	Bolt-CARR	42	116-9545	2	Axle And Bearing ASM
12	107-3154	6	Nut-Push	43	116-3872	2	Hub-Offset
13	116-6596-01	2	Plate-Jackshaft	44	3296-45	2	Nut-Lock, NI
14	116-6619	2	Plate-Adjustment, Transmission	45	3233-14	2	Screw-CARR
15	116-7597	1	Yoke-Brake, Park	46	104-7201	2	Nut-HF
16	9000779	1	Bolt-CARR	47	3232-3	4	Bolt-CARR
17	116-6723	2	Bracket-Hydro, Adjust	48	3229-1	2	Bolt-CARR
18	116-9307	1	Idler Arm ASM	49	324-6	4	Screw-HH
20	116-6756	2	Bearing-Pillow Block	50	3256-25	4	Washer-Flat
21	116-2839	4	Nut-Lock	51	3217-7	4	Nut-Hex
22	242-50	8	Nut-Lug	52	99-8664	2	Screw-HH
23	76-4660	1	Spring-Door	53	116-6775	1	Hose-Hydraulic
24	322-12	2	Screw-HH	54	116-6776	1	Hose-Hydraulic
25	116-7596	1	Pin-Brake, Park	55	109-3322	4	Clamp-Hose
26	104-8300	8	Nut-HF, NI	56	323-10	2	Screw-HH
27	126-9274	2	Sprocket-Idler	57	3296-48	8	Nut-Lock, NI
28	104-8417	2	Washer	58	32151-29	2	Ring-Retaining
29	104-8301	27	Nut-HF, NI	59	3296-59	1	Nut-Lock, NI
30	3231-25	6	Bolt-CARR	65	126-2054	2	Decal-Hub, Wheel
31	109-2250	1	Vent-Tank, HYD	66	109-6449	1	Fitting-Elbow, 90
31:1	109-3320	1	Cap-Reservoir, HYD	66:1	237-42	1	O-Ring
32	116-7109	4	Screw-HH	67	135-0685	1	Rod-Bypass, RH
33	116-6897	4	Link-Connecting	68	135-0683	1	Rod-Bypass, LH
34	135-1050	1	Transaxle-Zt3100, Rt (W/Pin)	69	1-806003	2	Pin-Cotter
35	135-1051	1	Transaxle-Zt3100, Lt (W/Pin)	70	119-8952	4	Washer

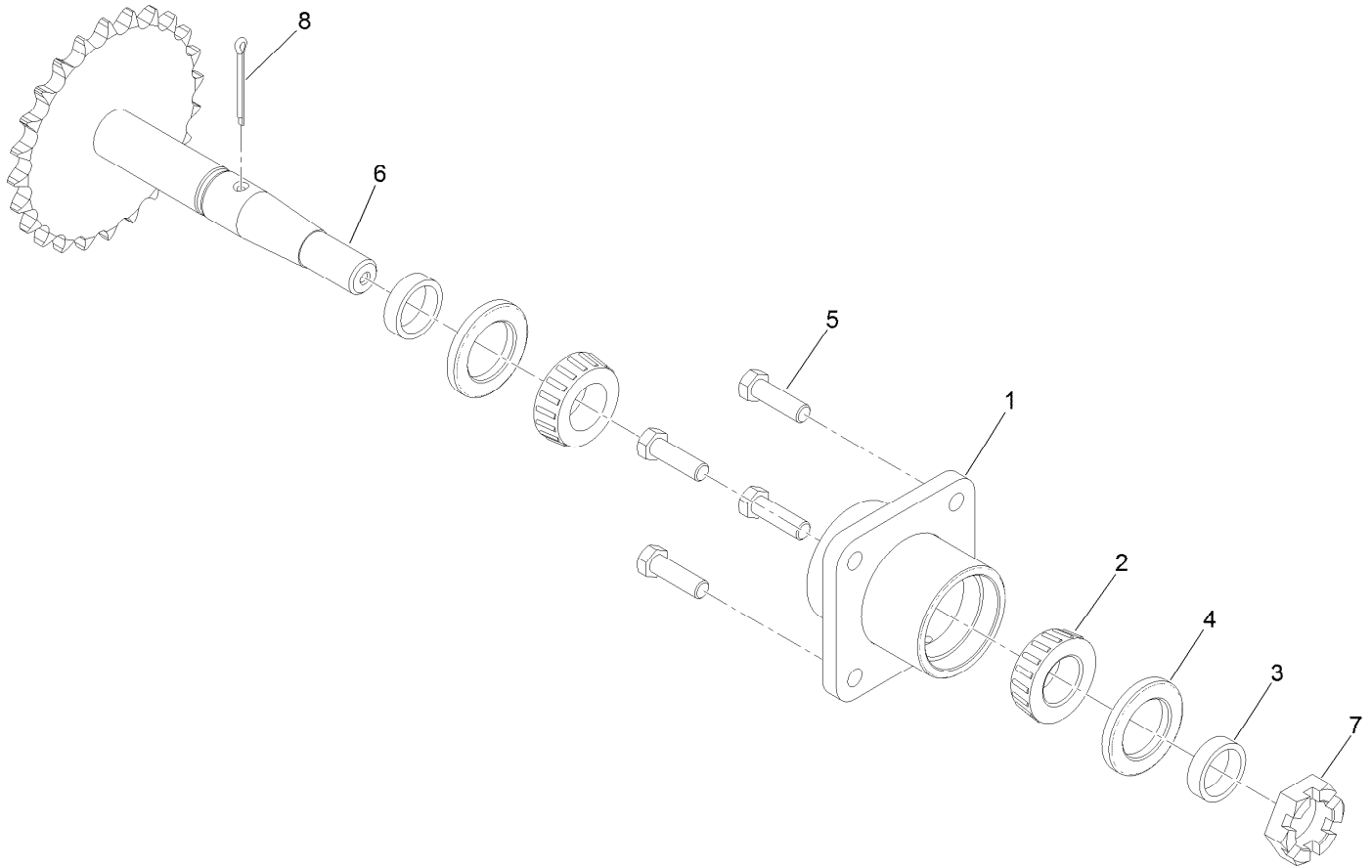
Idler Arm Assembly No. 116-9307



Idler Arm Assembly No. 116-9307 (continued)

<i>Ref.</i>	<i>Part Number</i>	<i>Qty.</i>	<i>Description</i>	<i>Ref.</i>	<i>Part Number</i>	<i>Qty.</i>	<i>Description</i>
2	106-7159	2	O-Ring	5	103-3506	1	Seal-Lip, Single
3	103-3504	2	Bearing-Spherical	6	103-3505	1	Seal-Lip, Double
4	32120-10	2	Ring-Snap	7	1-603401	1	Spacer

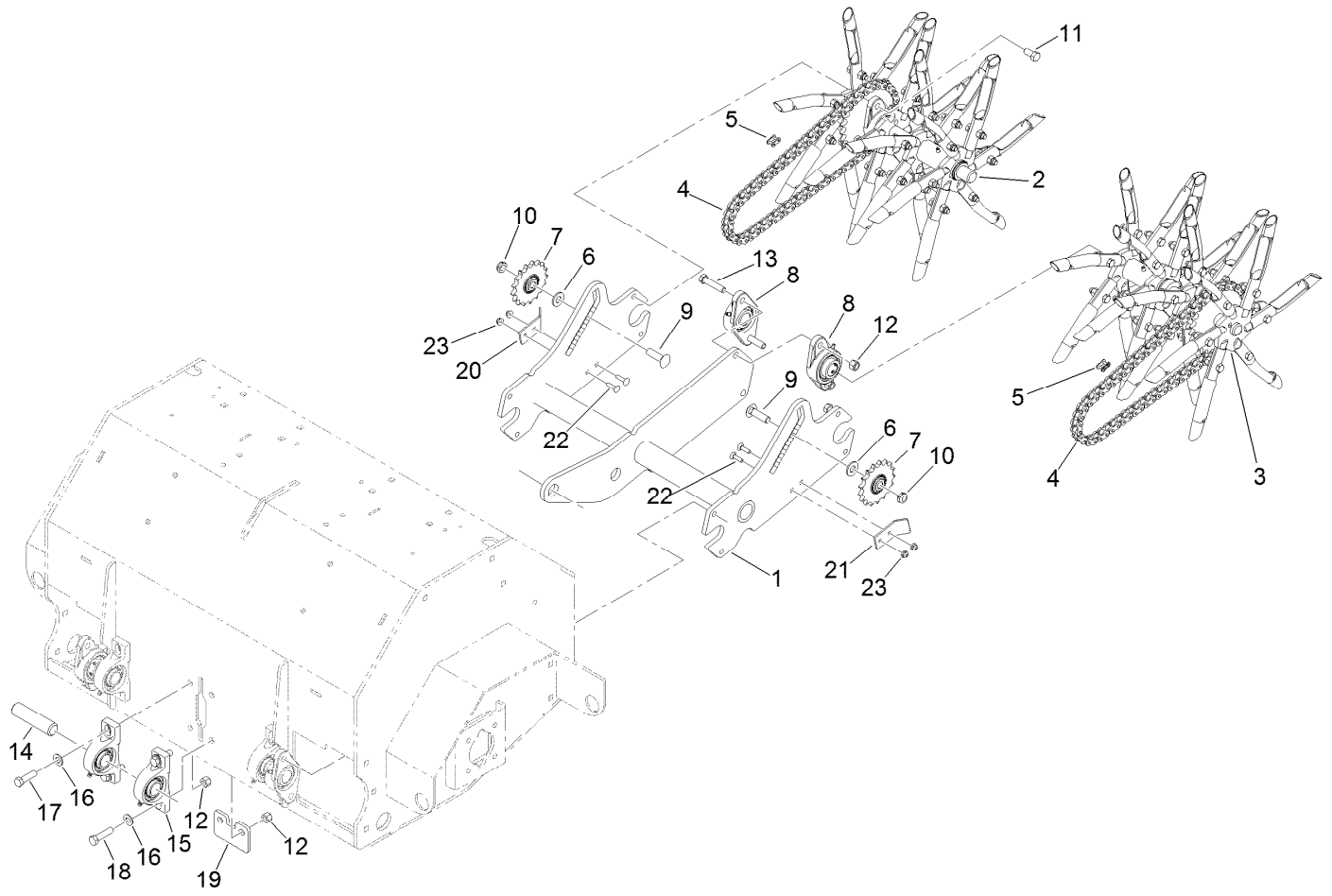
Axle and Bearing Assembly No. 116-9545



Axle and Bearing Assembly No. 116-9545 (continued)

<i>Ref.</i>	<i>Part Number</i>	<i>Qty.</i>	<i>Description</i>	<i>Ref.</i>	<i>Part Number</i>	<i>Qty.</i>	<i>Description</i>
1	116-6746-01	1	Mount-Bearing, Wheel	5	323-7	4	Screw-HH
2	1-543509	2	Bearing-Roller, Tapered	6	126-0459	1	Axle
3	116-6758	2	Spacer	7	99-3139	1	Nut
4	1-543511	2	Seal-Grease	8	1-806800	1	Pin-Cotter

Tine Assembly

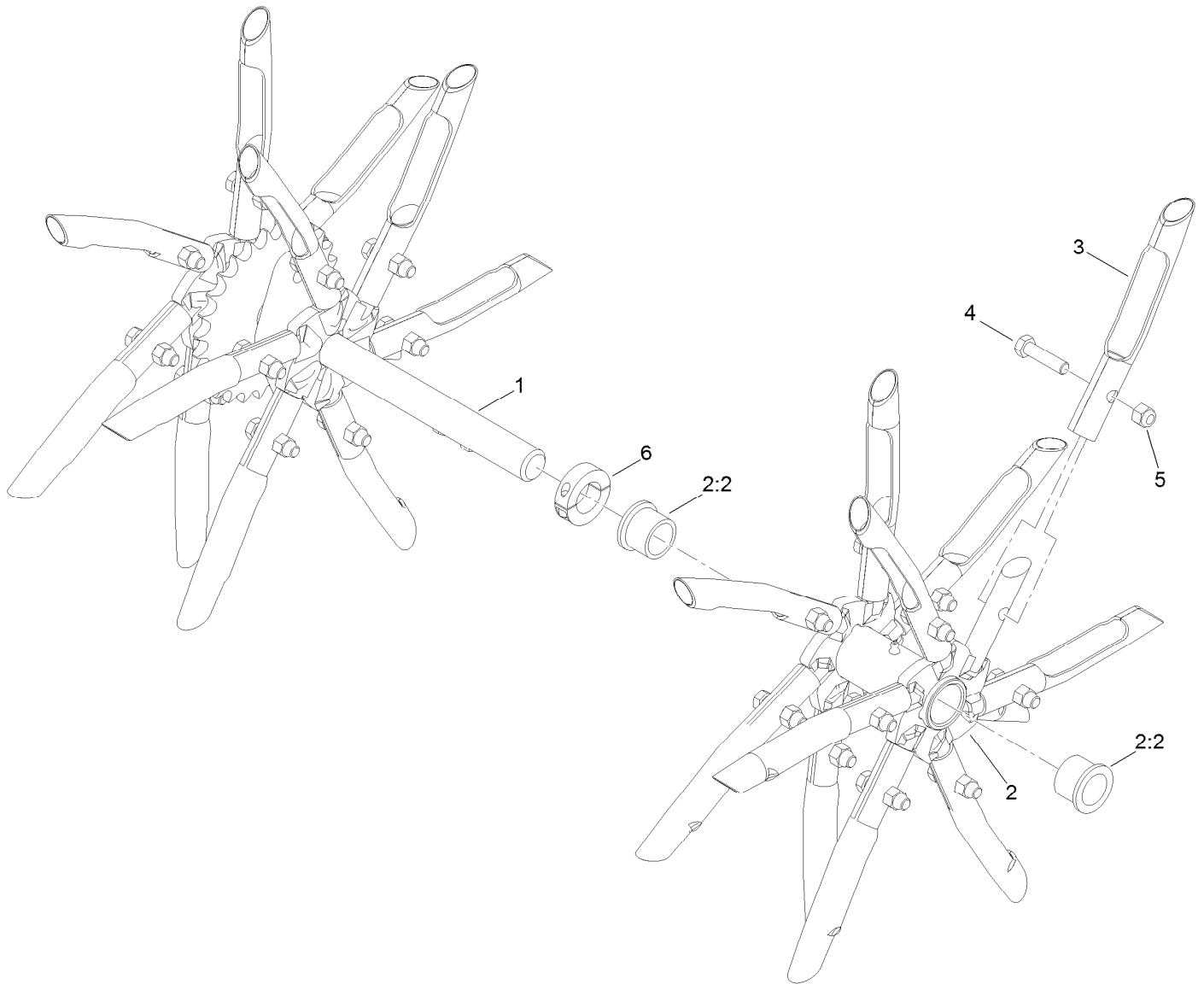


Tine Assembly (continued)

<i>Ref.</i>	<i>Part Number</i>	<i>Qty.</i>	<i>Description</i>	<i>Ref.</i>	<i>Part Number</i>	<i>Qty.</i>	<i>Description</i>
1	126-4817-03	1	Arm-Trail	13	324-8	2	Screw-HH
2	116-6738	1	RH Tine Wheel ASM	14	116-6629	1	Shaft
3	116-6739	1	LH Tine Wheel ASM	15	116-6756	2	Bearing-Pillow Block ●
4	126-8808	2	Chain-Roller	16	3256-25	4	Washer-Flat
5	116-6897	2	Link-Connecting	17	324-6	2	Screw-HH
6	87-7270	2	Washer-Thrust	18	324-7	2	Screw-HH
7	126-9274	2	Sprocket-Idler	19	116-7327-01	1	Plate-Downstop
8	116-6777	2	Bearing-Flange, 2 Bolt	20	126-4192-03	1	Guard-Chain, RH
9	3233-14	2	Screw-CARR	21	126-4193-03	1	Guard-Chain, LH
10	3296-45	2	Nut-Lock, NI	22	3229-30	4	Screw-CARR
11	116-7109	4	Screw-HH ●	23	104-7201	4	Nut-HF
12	3296-48	6	Nut-Lock, NI				

● Use Pro-Lock, Nut Type (P/N 1-840022, .5ml tube) on threads.

RH Tine Wheel Assembly No. 116-6738

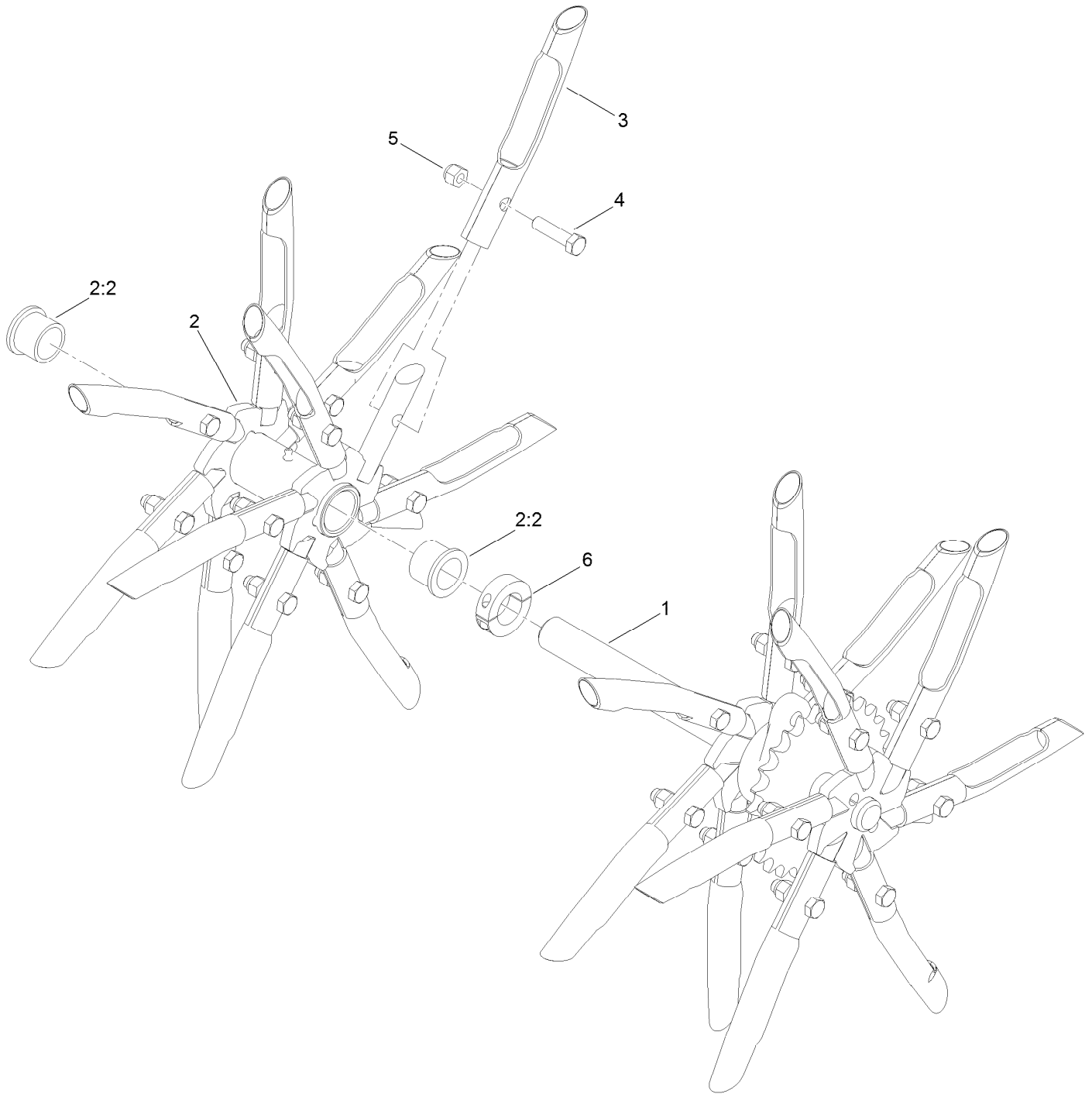


RH Tine Wheel Assembly No. 116-6738 (continued)

<i>Ref.</i>	<i>Part Number</i>	<i>Qty.</i>	<i>Description</i>	<i>Ref.</i>	<i>Part Number</i>	<i>Qty.</i>	<i>Description</i>
1	116-6727	1	Shaft-Tine, RH	4	323-8	24	Screw-HH
2	116-6731	1	Float Tine Shaft ASM	5	3296-39	24	Nut-Lock, NI
2:2	94-8949	2	Bushing-Flange	6	116-7271	1	Collar-Locking ●
3	126-2143	24	Tine-Coring (3/4 Inch)				

● Use Loctite® 243 on threads.

LH Tine Wheel Assembly No. 116-6739



LH Tine Wheel Assembly No. 116-6739 (continued)

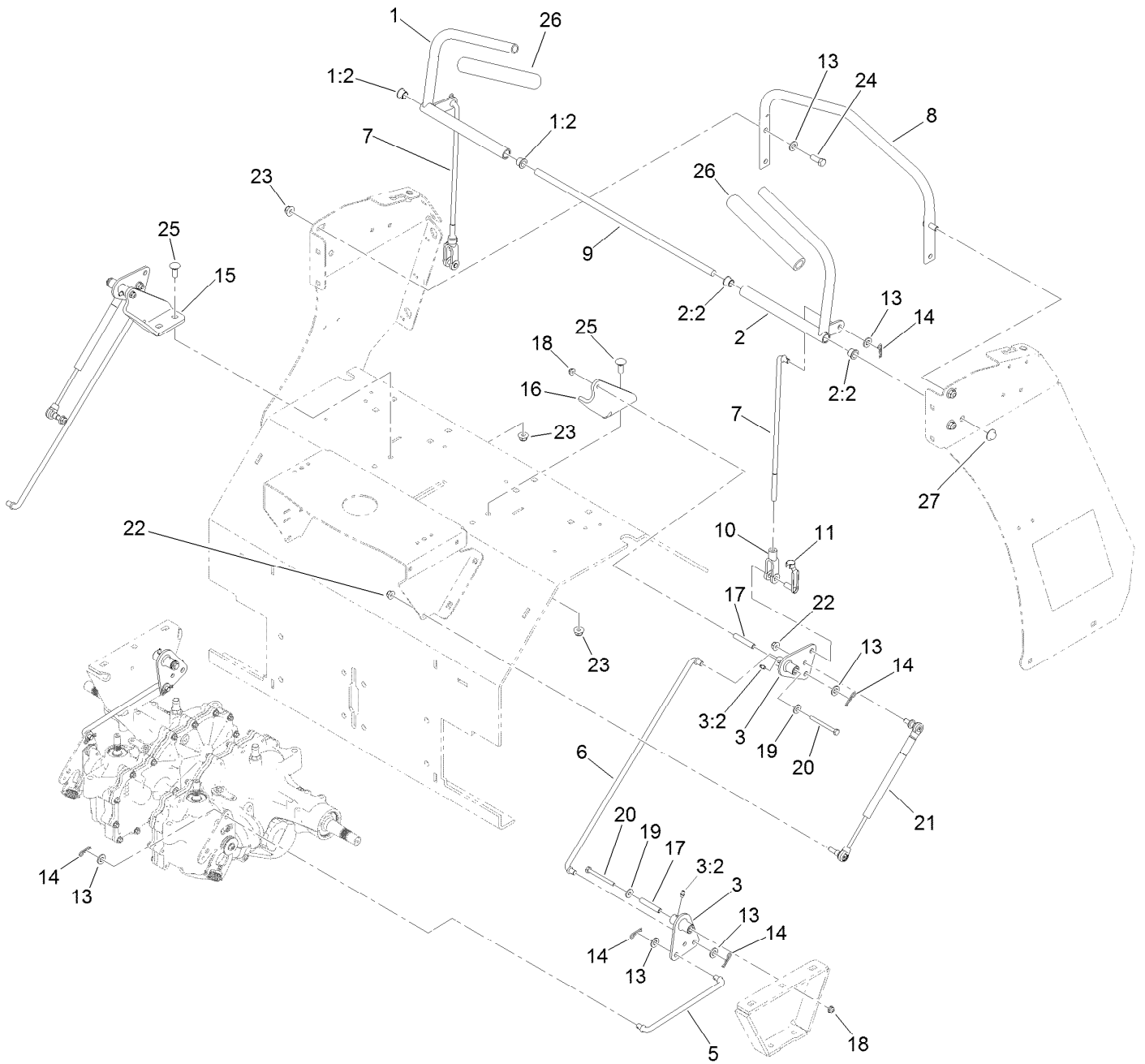
<i>Ref.</i>	<i>Part Number</i>	<i>Qty.</i>	<i>Description</i>	<i>Ref.</i>	<i>Part Number</i>	<i>Qty.</i>	<i>Description</i>
1	116-6728	1	Shaft-Tine, LH	4	323-8	24	Screw-HH
2	116-6731	1	Float Tine Shaft ASM	5	3296-39	24	Nut-Lock, NI
2:2	94-8949	2	Bushing-Flange	6	116-7271	1	Collar-Locking ●
3	126-2143	24	Tine-Coring (3/4 Inch)				

● Use Loctite® 243 on threads.

Fuel Assembly (continued)

<i>Ref.</i>	<i>Part Number</i>	<i>Qty.</i>	<i>Description</i>	<i>Ref.</i>	<i>Part Number</i>	<i>Qty.</i>	<i>Description</i>
1	116-9541-01	1	Support-Tank, Fuel	12	1-603770	1	Valve-Fuel
2	126-9062	1	Fuel Tank ASM	13	135-0494	1	Hose-Line, Gas
2:2	135-0330	1	Cap-Fuel, Ratcheting (3.5 Inch)	17	1-303335	3	Tie-Plastic
2:3	114-0284	1	Grommet	19	114-0292	1	Bracket-Canister, Carbon
2:4	119-3547	1	Valve-Vent, Fuel	20	117-1221	1	Canister-Carbon, 800Cc
2:5	46-6560	1	Bushing	21	115-0962	1	Hose-Vent, Canister
2:6	109-9364	1	Fitting-Fuel (W/Line And Screen)	22	135-0986	1	Hose-Emissions
3	107-4543	2	Clamp	23	126-4179	1	Hose-Vent, Formed
5	3256-3	2	Washer-Flat	24	119-8501	1	Hose-Vent, Formed
6	322-10	2	Screw-HH	25	116-2232	1	Valve-Control, Vacuum
7	104-8300	2	Nut-HF, NI	26	119-8502	1	Hose-Vent, Formed
8	3231-22	4	Screw-CARR	27	126-2991-03	1	Bracket-Mounting, Canister
9	104-8301	4	Nut-HF, NI	28	3229-1	2	Bolt-CARR
10	2412-98	4	Clamp-Hose	29	321-2	2	Screw-HH
11	119-7856	1	Hose-Fuel	30	104-7201	4	Nut-HF
				31	116-2469	1	Strap-Velcro, Cable Tie

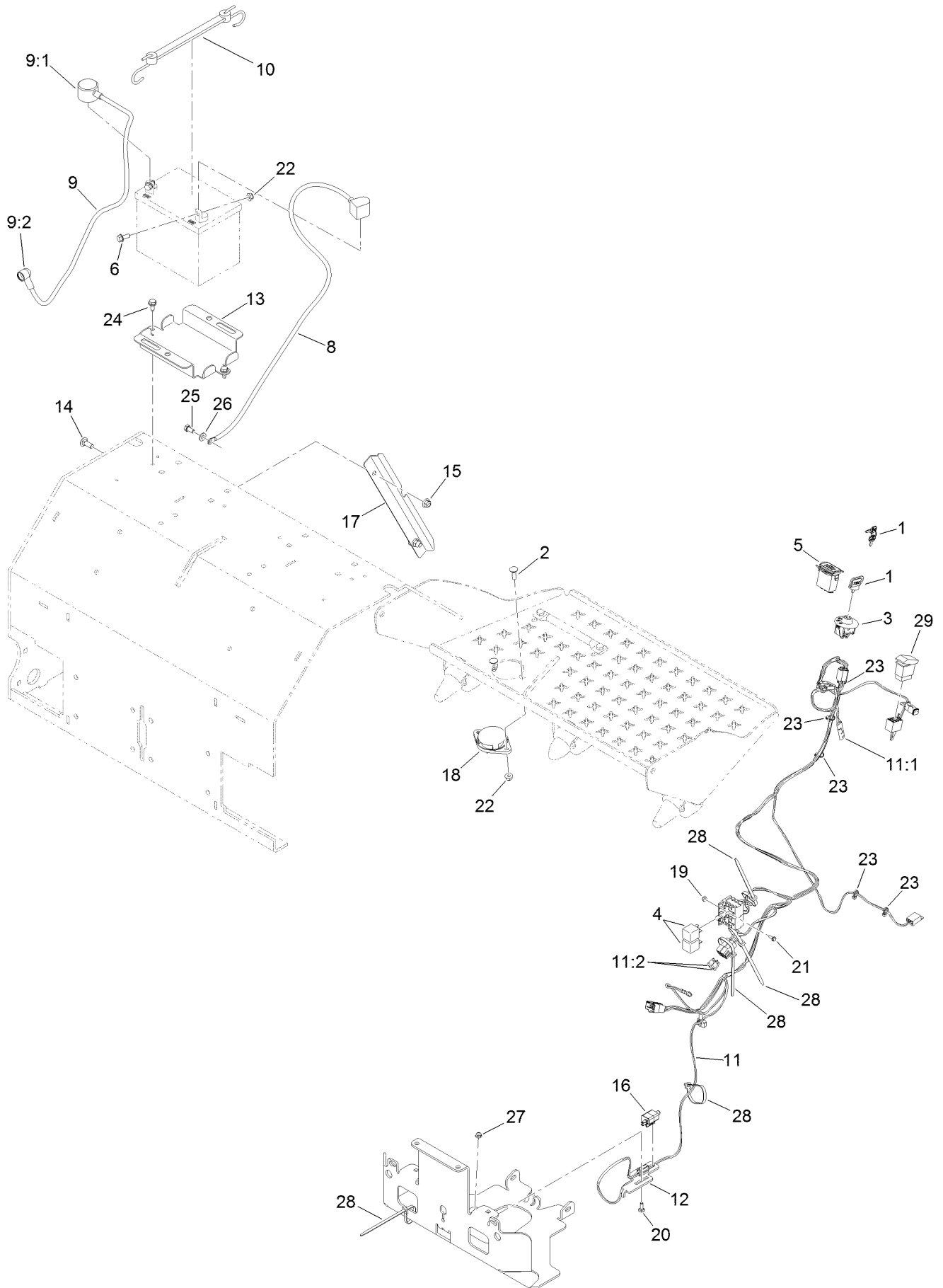
Motion Control Assembly



Motion Control Assembly (continued)

<i>Ref.</i>	<i>Part Number</i>	<i>Qty.</i>	<i>Description</i>	<i>Ref.</i>	<i>Part Number</i>	<i>Qty.</i>	<i>Description</i>
1	116-6567	1	RH Control Handle ASM	14	1-806003	10	Pin-Cotter
1:2	116-4279	2	Bearing-Flange	15	116-6576-03	1	Bracket-Pivot, RH
2	116-6566	1	LH Control Handle ASM	16	116-6577-03	1	Bracket-Pivot, LH
2:2	116-4279	2	Bearing-Flange	17	116-7224	4	Spacer
3	126-0340	4	Crank-Bell	18	104-7201	4	Nut-HF
3:2	302-19	1	Fitting-Grease	19	3256-2	4	Washer-Flat
5	116-6722	2	Link-Control, Hydro	20	321-14	4	Screw-HH
6	116-9298	2	Link-Control, Bell Crank	21	116-0027	2	Damper-Control, Motion
7	116-6730	2	Link-Control, Bell Crank	22	104-8300	4	Nut-HF, NI
8	116-6608-03	1	Bar-Reference	23	104-8301	8	Nut-HF, NI
9	116-6607	1	Shaft-Pivot, Control	24	323-6	4	Screw-HH
10	1-633131	2	Yoke-Linkage, Brake	25	3231-2	4	Bolt-CARR
11	103-2399	2	Pin-Spring, Clevis	26	103-8153	2	Grip-Lever, Control
13	3256-24	14	Washer-Flat	27	32112-14	2	Nut-Push

Electrical Assembly

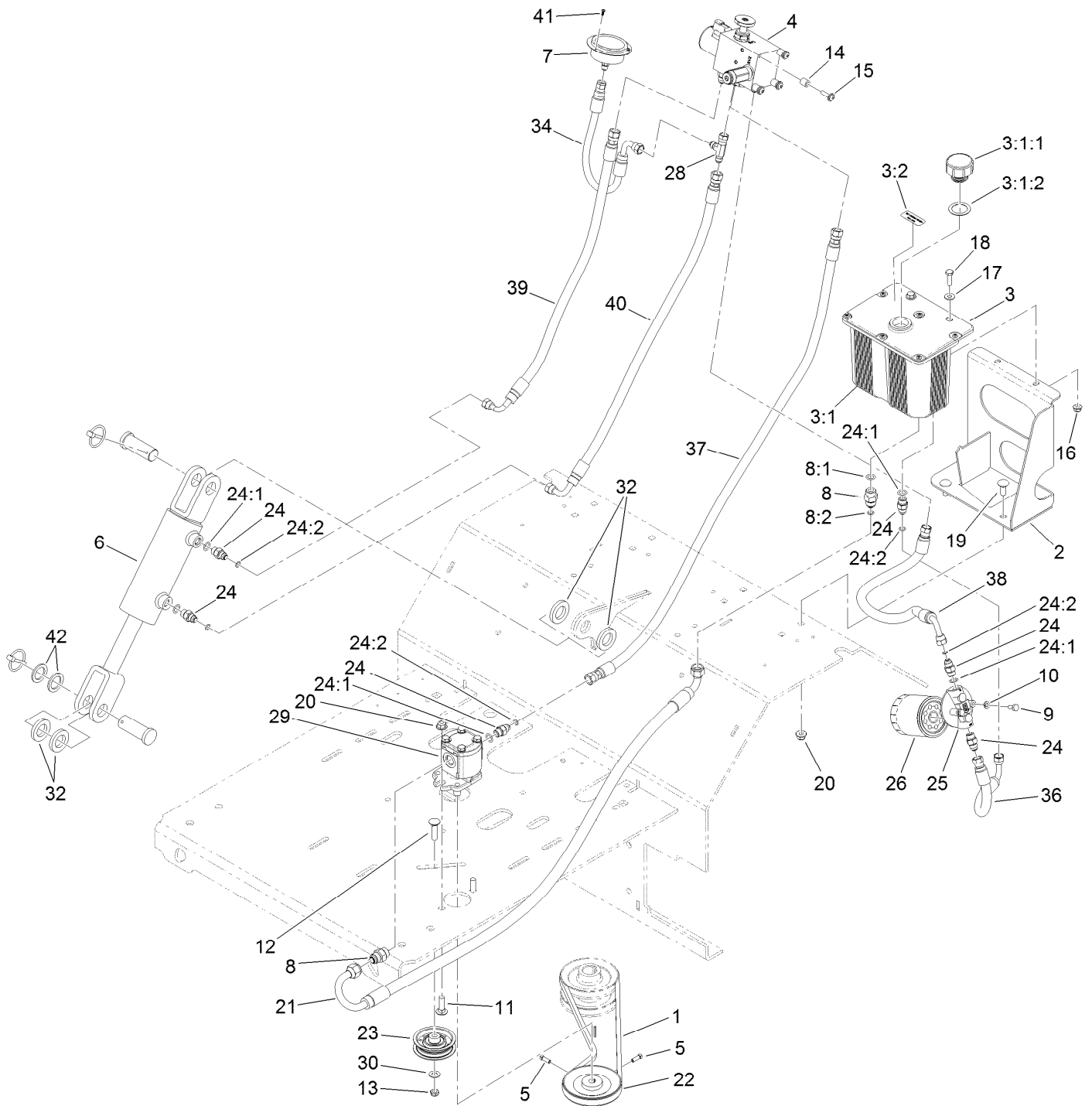


Electrical Assembly (continued)

<i>Ref.</i>	<i>Part Number</i>	<i>Qty.</i>	<i>Description</i>	<i>Ref.</i>	<i>Part Number</i>	<i>Qty.</i>	<i>Description</i>
1	1-603511	1	Keys-Ignition (Spare Pair)	14	3231-2	2	Bolt-CARR
1	63-8360	1	Key-Ignition	15	104-8301	2	Nut-HF, NI
2	3230-2	2	Bolt-CARR	16	110-6765	1	Switch
3	137-4100	1	Switch-Ignition	17	116-9394-03	1	Guard-Harness
4	1-643275	2	Relay	18	92-6282	1	Switch-Seat
5	1-513374	1	Meter-Hour	19	3296-2	2	Nut-Lock, NI
6	3234-5	2	Screw-HHF	20	3229-1	1	Bolt-CARR
8	117-6422	1	Cable-Battery, Black	21	3290-321	2	Screw-HWH
9	109-7630	1	Positive Battery Cable ASM	22	104-8300	4	Nut-HF, NI
9:1	109-2407	1	Insulator-Battery	23	1-303287	5	Tie-Cable
9:2	1-543393	1	Insulator-Solenoid	24	32144-70	2	Screw-HWHTF
10	104-2466	1	Holddown-Battery	25	33114-016	1	Screw-HH
11	126-9480	1	Harness-Wire ●	26	33094-00	1	Washer-Plain
11:1	116-0053	1	Cap-Plug	27	104-7201	1	Nut-HF
11:2	1-816001	2	Fuse-Blade Type, 20 Amp	28	1-303335	5	Tie-Plastic
12	116-7589	1	Mount-Switch	29	95-8999	1	Switch
13	116-9383-03	1	Bracket-Battery				

● Use dielectric grease on all unsealed connectors and terminals only. Do not apply in sealed connectors.

Auxiliary Hydraulic Assembly



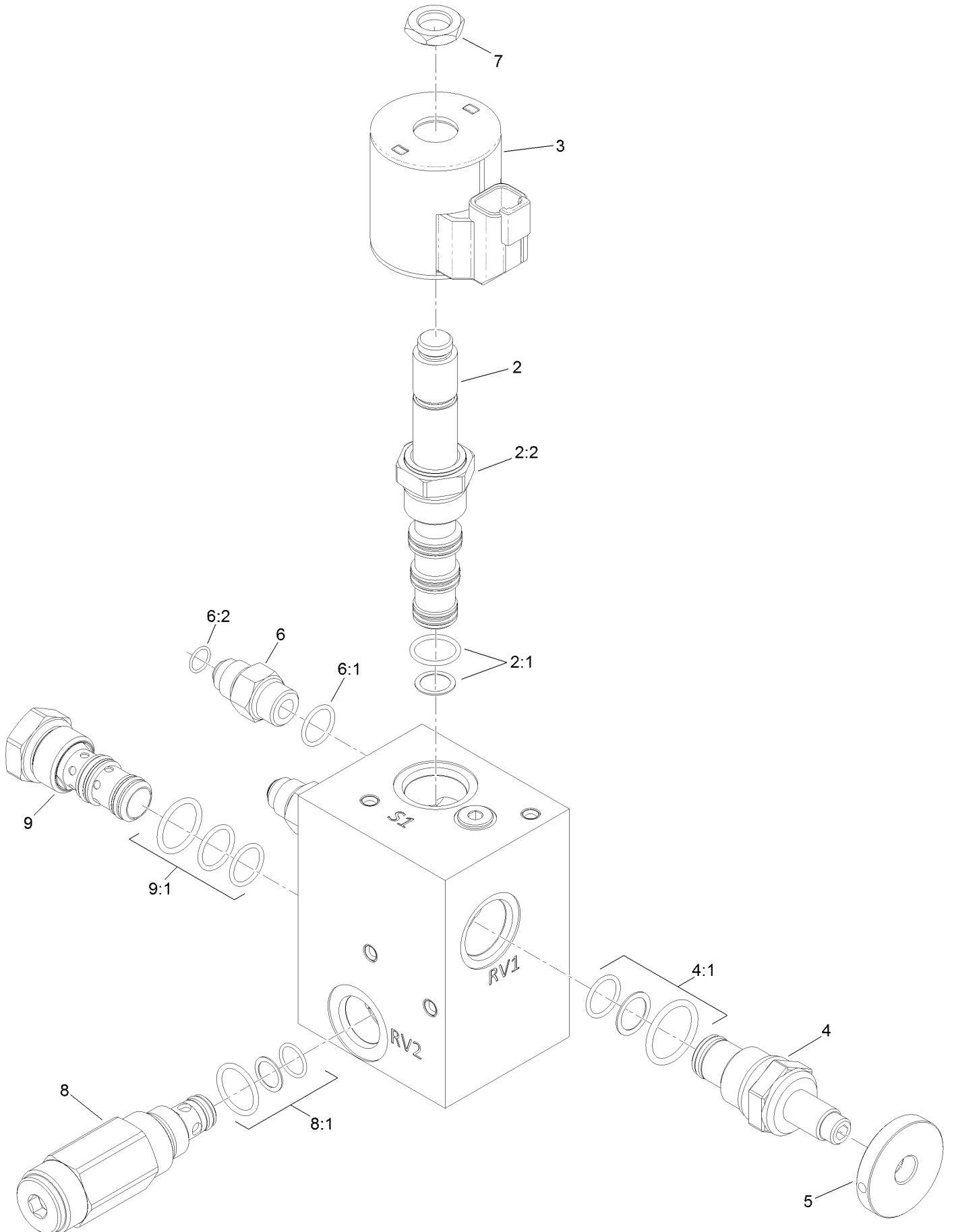
Auxiliary Hydraulic Assembly (continued)

<i>Ref.</i>	<i>Part Number</i>	<i>Qty.</i>	<i>Description</i>	<i>Ref.</i>	<i>Part Number</i>	<i>Qty.</i>	<i>Description</i>
1	116-8874	1	Belt-4L Section	18	322-5	2	Screw-HH
2	116-6618-03	1	Bracket-Tank, Hydraulic	19	3231-2	4	Bolt-CARR
3	116-7557	1	Reservoir ASM	20	104-8301	6	Nut-HF, NI
3:1		1	Tank-Hydraulic ●	21	116-9309	1	Hose-Hydraulic
3:1:1	103-1948	1	Cap-Reservoir, HYD	22	116-6667	1	Pulley
3:1:2	103-1949	1	Gasket-Cap	23	116-6760	1	Pulley-Idler, Flat
3:2	93-6686	1	Decal-Oil, HYD	24	103-2156	6	Fitting-Straight
4	116-9549	1	Valve-Manifold	24:1	1-603921	1	O-Ring
5	3241-6	2	Screw-SQH ■	24:2	103-1020	1	O-Ring
6	116-6969	1	HYD Cylinder ASM	25	104-7836	1	Head-Filter
7	116-8178	1	Gauge-Pressure	26	1-633750	1	Filter-Oil, HYD
8	1-603990	2	Fitting-Straight	28	353-877	1	Fitting-HYD, Tee
8:1	1-603920	1	O-Ring	29	116-9129	1	Hydraulic Pump ASM
8:2	1-603992	1	O-Ring	30	3256-24	1	Washer-Flat
9	321-3	2	Screw-HH	32	116-6781	4	Spacer
10	1-805004	2	Washer-Lock	34	116-8180	1	Hose-Hydraulic, HP
11	3231-25	2	Bolt-CARR	36	116-6675	1	Hose-Hydraulic, LP
12	3231-4	1	Screw-CARR	37	116-8151	1	Hose-Hydraulic
13	3296-59	1	Nut-Lock, NI	38	116-9308	1	Hose-Hydraulic
14	22-7810	4	Spacer	39	116-6677	1	Hose-Hydraulic
15	110-9361	4	Screw-PPH	40	116-6678	1	Hose-Hydraulic, HP
16	104-8300	2	Nut-HF, NI	41	363-8552	3	Screw-TAP
17	3256-2	2	Washer-Flat	42	3-8514	2	Washer-Thrust

● Not serviced separately

■ Use Pro-Lock, Nut Type (P/N 1-840022, .5ml tube) on threads.

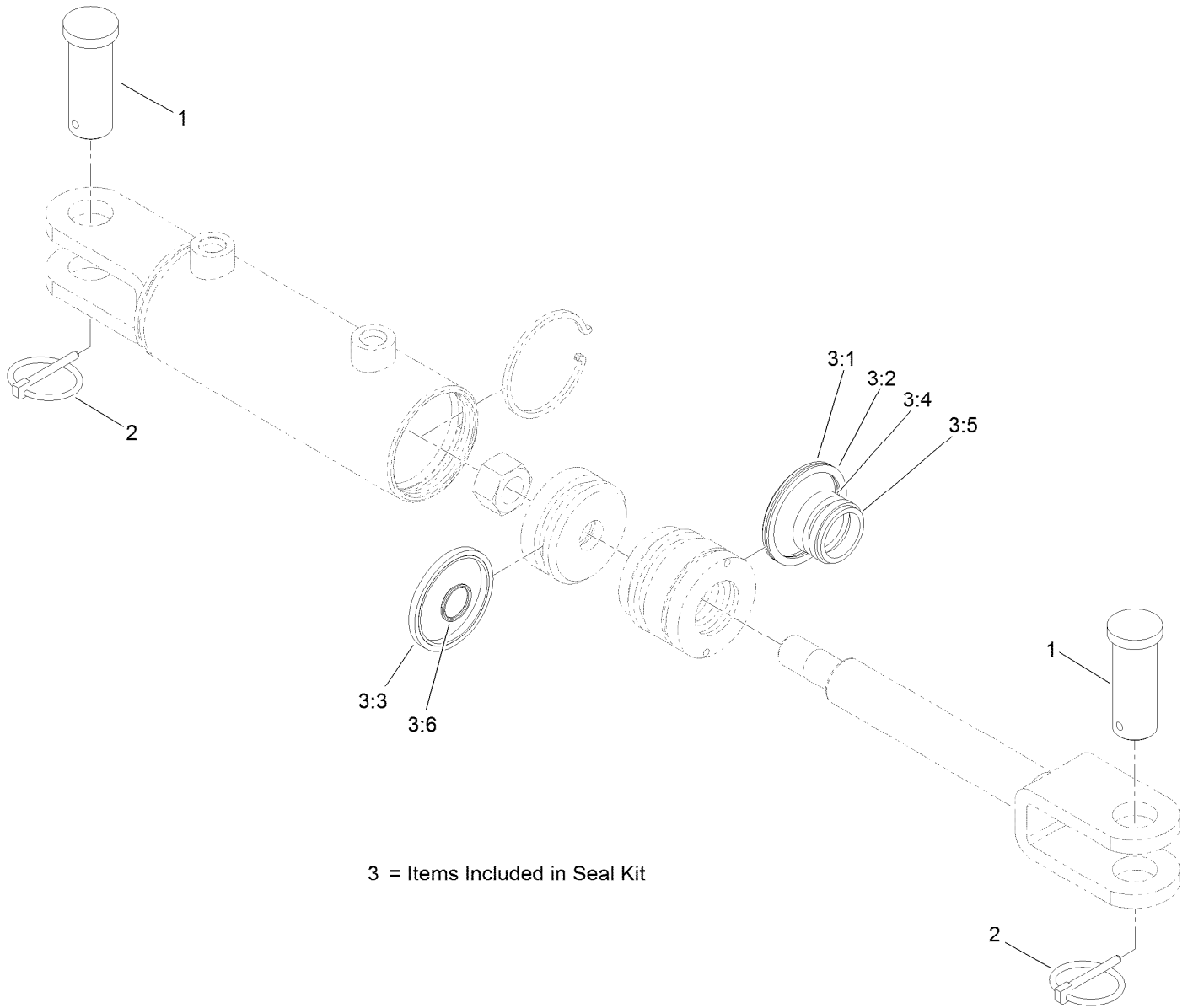
Manifold W/Check and Relief Valve Assembly No. 116-9549



Manifold W/Check and Relief Valve Assembly No. 116-9549 (continued)

<i>Ref.</i>	<i>Part Number</i>	<i>Qty.</i>	<i>Description</i>	<i>Ref.</i>	<i>Part Number</i>	<i>Qty.</i>	<i>Description</i>
2	110-8906	1	Valve-Solenoid	6:1	1-603921	1	O-Ring
2:1	110-8908	1	Spool Valve Seal Kit	6:2	103-1020	1	O-Ring
2:2	110-2634	1	Nut-Coil	7	110-2634	1	Nut-Coil
3	119-4619	1	Coil-Solenoid	8	116-9716	1	Valve-Relief
4	116-9397	1	Valve-Relief, Poppet Style	8:1	116-9717	1	Seal Kit
4:1	116-9398	1	Relief Valve Seal Kit	9	116-9718	1	Valve-Check, P O
5	116-9396	1	Knob (1.5 DIA)	9:1	116-9719	1	Seal Kit
6	103-2156	4	Fitting-Straight				

Hydraulic Cylinder Assembly No. 116-6969



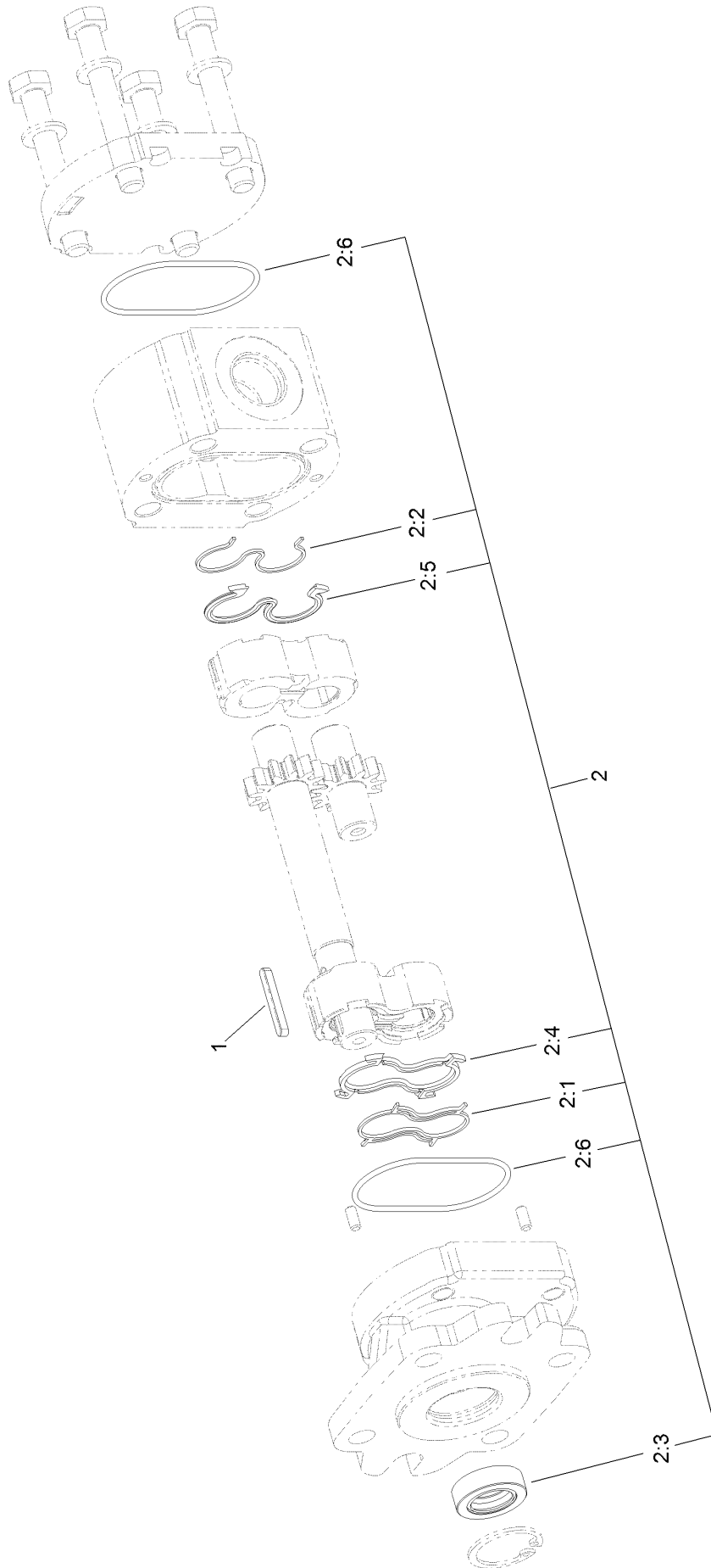
3 = Items Included in Seal Kit

Hydraulic Cylinder Assembly No. 116-6969 (continued)

<i>Ref.</i>	<i>Part Number</i>	<i>Qty.</i>	<i>Description</i>	<i>Ref.</i>	<i>Part Number</i>	<i>Qty.</i>	<i>Description</i>
1	116-7290	2	Pin-Clevis	3:3		1	Psp Seal ●
2	92-1298	2	Pin-Lynch	3:4		1	Bs Seal ●
3	127-3234	1	Seal Kit	3:5		1	Dust Seal ●
3:1		1	O-Ring ●	3:6		1	O-Ring ●
3:2		1	Backup Ring ●				

● Not serviced separately

Hydraulic Pump Assembly No. 116-9129

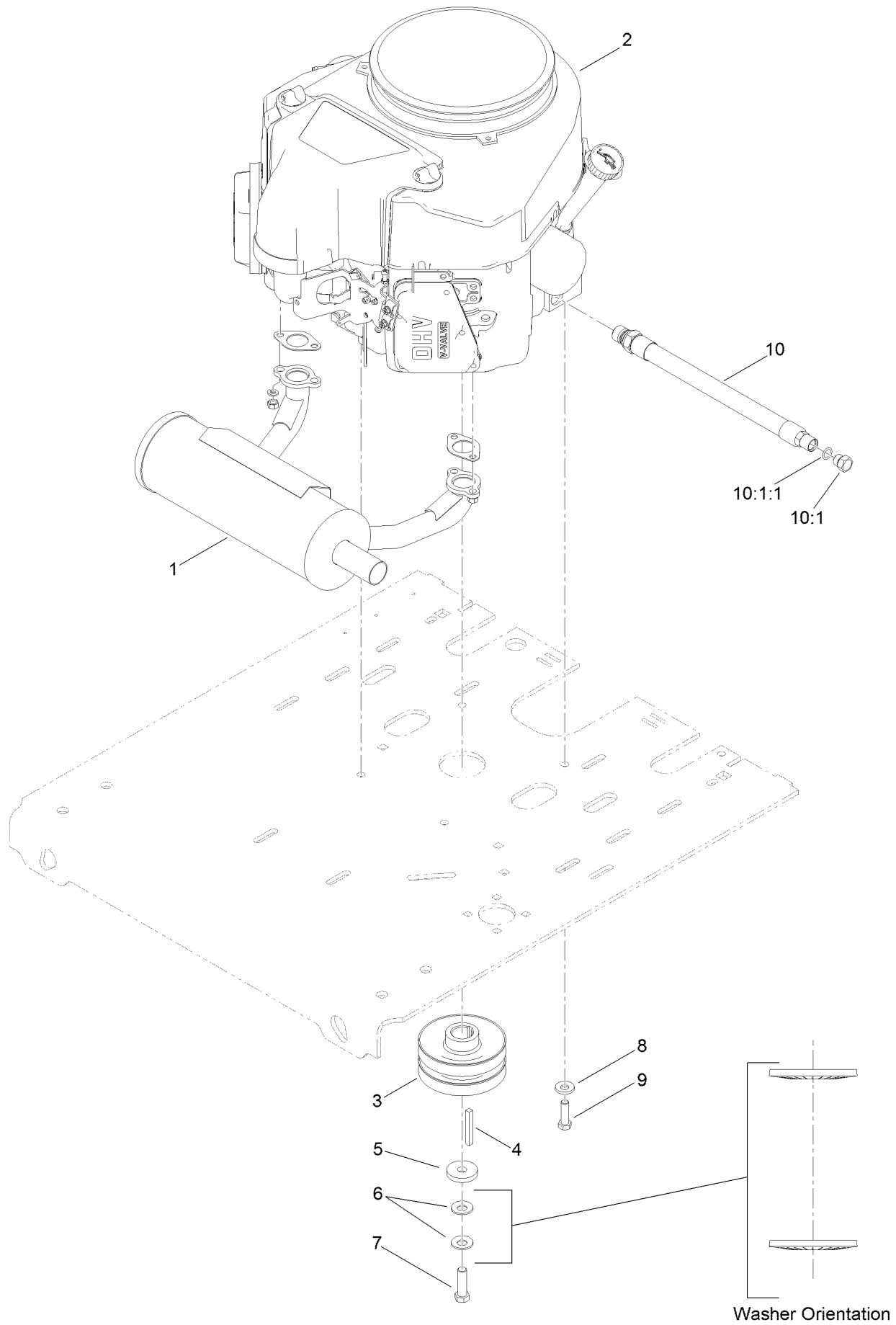


Hydraulic Pump Assembly No. 116-9129 (continued)

<i>Ref.</i>	<i>Part Number</i>	<i>Qty.</i>	<i>Description</i>	<i>Ref.</i>	<i>Part Number</i>	<i>Qty.</i>	<i>Description</i>
1	115-7855	1	Key-Square	2:3		1	Seal-Shaft ●
2	112-0199	1	Seal Kit	2:4		1	Seal-Upper ●
2:1		1	Seal-Anti Extrusion ●	2:5		1	Seal ●
2:2		1	Seal-Anti Extrusion ●	2:6		2	O-Ring ●

● Not serviced separately

Engine Assembly



Engine Assembly (continued)

<i>Ref.</i>	<i>Part Number</i>	<i>Qty.</i>	<i>Description</i>	<i>Ref.</i>	<i>Part Number</i>	<i>Qty.</i>	<i>Description</i>
1	116-3735	1	Muffler-Horizontal	8	98-5975	4	Washer-Belleville
2		1	Engine-Kawasaki, Fs541 ■▲	9	323-7	4	Screw-HH
3	116-9709	1	Pulley	10	116-4924	1	Engine Oil Drain Hose ASM
4	103-4177	1	Key				◆
5	1-543610	1	Washer-Clutch	10:1	353-508	1	Plug-HH ●
6	1-603610	2	Washer-Spring	10:1:1	237-42	1	O-Ring
7	109-9761	1	Screw-HH □				

● Torque to 24-26 ft-lb

▲ Obtain parts from www.kawpowerepc.com

◆ Use a Teflon Pipe Sealant or equivalent on threads.

□ Use Pro-Lock, Nut Type (P/N 1-840022, .5ml tube) on threads.

■ Not serviced separately

Notes:

Notes:



Count on it.