



48" RECYCLER® KIT

MODEL NO. 79195

INSTALLATION
INSTRUCTIONS

Fits: Model 78260 with s\n above 7904310 Lawn & Garden Tractor-Mowers
 Model 78268 with s\n above 7902555 Lawn & Garden Tractor-Mowers
 Model 78360 with s\n above 7904083 Garden Tractor-Mowers
 Model 78368 with s\n above 7901140 Garden Tractor-Mowers

Loose Parts

Note: Use the chart below to identify parts used for assembly.

DESCRIPTION	QTY.	USE
Baffle-front	1	Install front and discharge baffles
Baffle-discharge	1	
Carriage bolt 5/16"-18 x 3/4" (19 mm)	6	
Locknut 5/16"-18	6	
Kicker	2	Install kickers
Spacer	2	
Bolt 5/16" 18 x 1" (25 mm)	2	
Locknut 5/16"-18	2	
Blade	3	Install blades and decal
Decal-Recycler®	1	

Pre-Installation

1. Remove mower unit refer to: Operator's Manual for instructions.
2. Thoroughly clean the mower. All debris must be removed to ensure baffles will fit properly against mower.
3. Repair all bent or damaged areas of mower and replace any missing parts.
4. Tip mower upside down and block up ends to ease installation.
5. Remove blades from spindles. Save for use when side discharging.
6. Install the thick washer, blade, thin washer, and the blade nut (Fig. 1).

IMPORTANT: The curved part of the blade must be pointing toward the top of the mower to assure proper cutting.

7. Tighten the blade nut to 80-100 ft-lb (109-136 Nm).

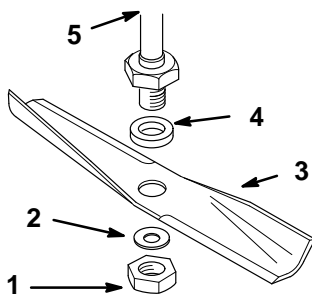


Figure 1

- | | |
|------------------|-------------------|
| 1. Nut | 4. Washer – thick |
| 2. Washer – thin | 5. Spindle |
| 3. Blade | |

Install Discharge Baffle

1. Locate discharge baffle mounting hole in front of mower. Remove and discard any existing hardware filling mounting hole.
2. Position discharge baffle in discharge opening. Engage pin on flange into rear right baffle (Fig. 2).
3. Secure flange hole of baffle to rear discharge baffle with a 5/16–18 x 3/4" (19 mm) carriage bolt and 5/16" locknut (Fig. 2).
4. Secure to front of mower with a 5/16-18 x 3/4" (19 mm) carriage bolt, with head on the inside. Secure with 5/16" locknut (Fig. 2).

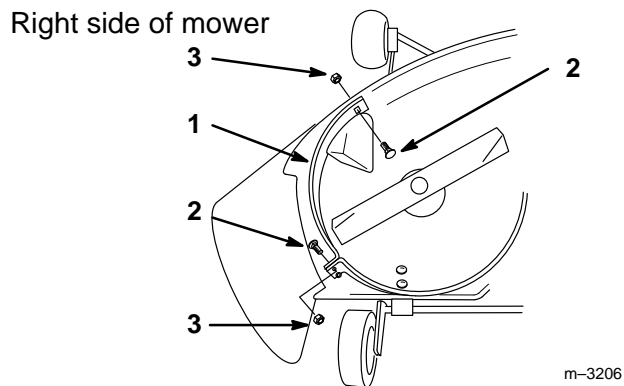


Figure 2

- | | |
|---------------------------------------|------------------|
| 1. Discharge baffle | 3. Locknut 5/16" |
| 2. Carriage bolt 5/16–18x3/4" (19 mm) | |

Install Front Baffle

1. Locate front baffle mounting holes in mower. Remove and discard any existing hardware filling mounting holes.
2. Place front baffle inside mower and align with mounting holes (Fig. 3).

3. Place (4) 5/16-18 x 3/4" (19 mm) carriage bolts with heads on the inside of the ends and on top at the mounting brackets as shown (Fig. 3). Secure with 5/16" locknuts (Fig. 3).

Right side of mower

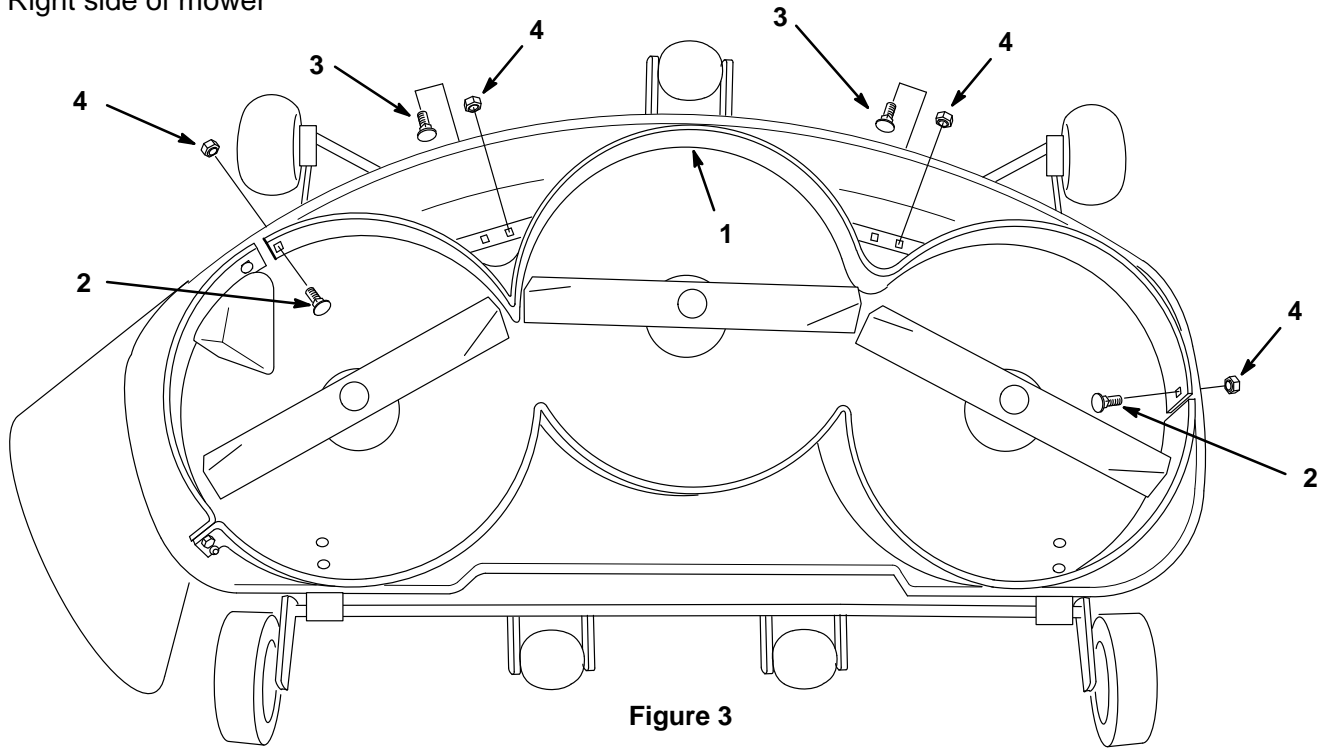


Figure 3

- | | |
|--|---|
| <ol style="list-style-type: none"> 1. Front baffle 2. Carriage bolt 5/16-18x3/4" (19 mm) | <ol style="list-style-type: none"> 3. Carriage bolt 5/16-18x3/4" (19 mm) with head on top of mower 4. Locknut 5/16" |
|--|---|

m-3234

Install Kickers

4. Locate kicker mounting holes in center and left chambers. Remove and discard any existing hardware filling kicker mounting holes.
5. Place kickers tight against mower baffle (Fig. 4).
6. Install kickers with 5/16–18 x 1" (26 mm) bolt, with head inside mower and spacer between kicker and mower. Secure with 5/16" lock nut on top of mower (Fig. 4).
7. Tighten all mounting hardware securely.

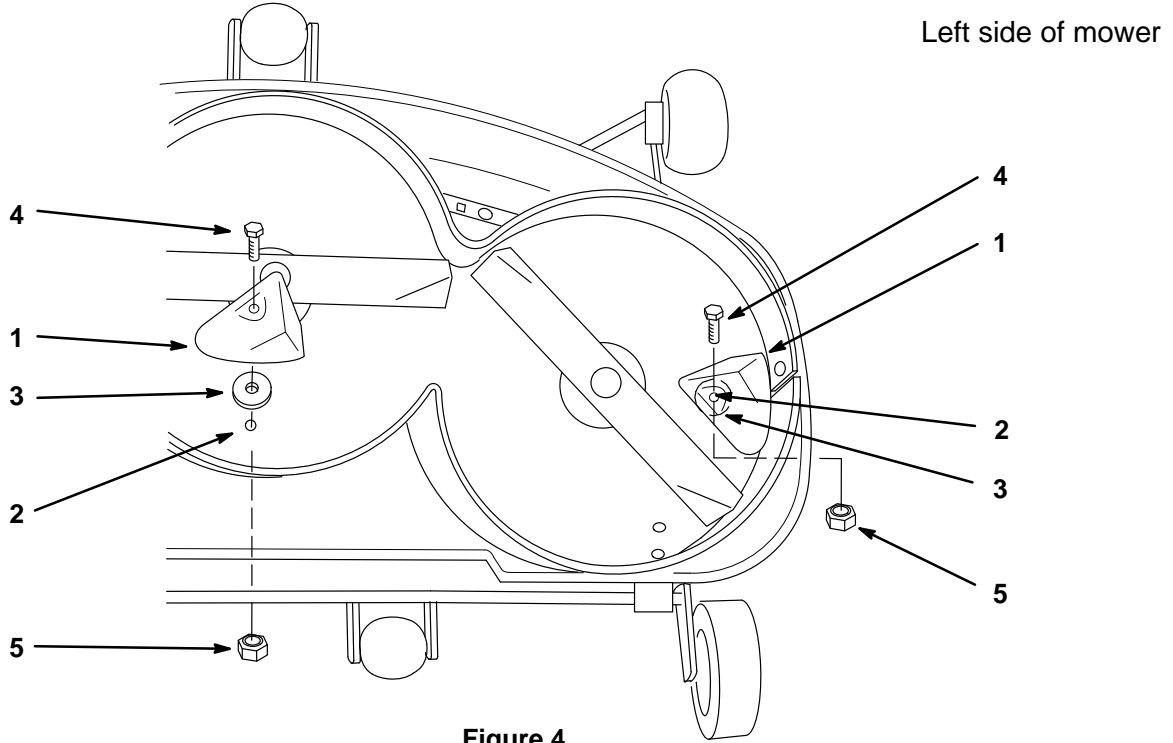


Figure 4

- | | |
|-------------------------|------------------------------|
| 1. Kicker | 4. Bolt 5/16–18 x 1" (26 mm) |
| 2. Kicker mounting hole | 5. Locknut 5/16" |
| 3. Spacer | |

m-3235

Install Decal

1. Install Recycler[®] decal to left side of mower as shown (Fig. 5).
2. Remove backing paper and apply decal, smooth from center to edges to remove air bubbles.

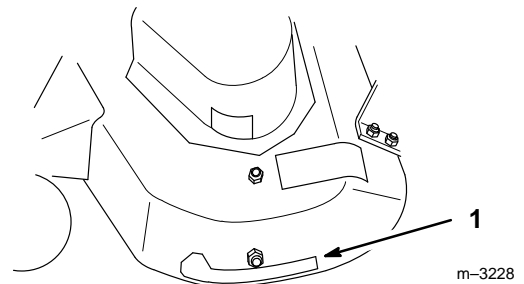


Figure 5

1. Recycler[®] decal

3. Install mower onto traction unit; refer to traction unit Operator's Manual.

Removing the Recycler® Baffle

Note: Only the right side baffle need be removed for side discharge mowing.

1. Thoroughly clean the mower.
2. Remove lock nuts and carriage bolts from front and flange on discharge baffle (Fig. 6). Lower baffle and slide out discharge opening to remove.
3. Install previously removed 5/16–3/4" (19 mm) carriage bolts and 5/16" lock nuts in open holes of mower for safety (Fig. 6).

DANGER

POTENTIAL HAZARD

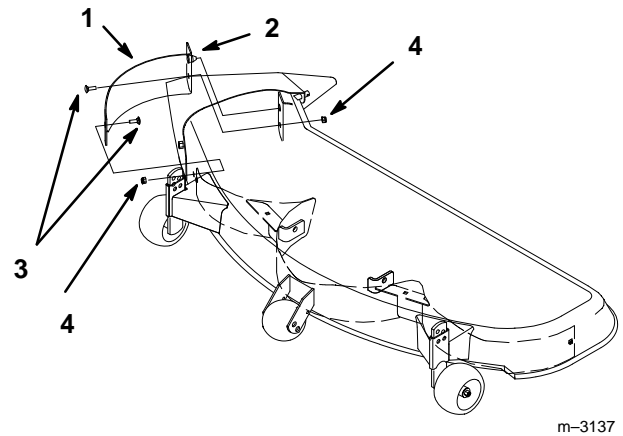
- Open holes in the mower expose you and others to thrown debris.

WHAT CAN HAPPEN

- Debris thrown out of holes in the mower can cause injury.

HOW TO AVOID THE HAZARD

- Install hardware in mounting holes when recycle baffle is removed.



m-3137

Figure 6

- | | |
|----------------------|-----------------------------|
| 1. Baffle right side | 3. Bolt 5/16 x 3/4" (19 mm) |
| 2. Flange pin | 4. Lock nut 5/16" |

Recycling® Tips

Selecting The Proper Height-Of-Cut Setting To Suit Conditions – Remove approximately one inch or no more than 1/3 of the grass blade when cutting. In exceptionally lush and dense grass you may have to raise your height-of-cut setting another notch or convert to side discharge or bagging operations.

Mowing In Extreme Conditions – Air is required to cut and recut grass clippings in mower housing, so do not set height-of-cut too low or totally surround housing by uncut grass. Always try to have one side of the mower housing free from uncut grass, allowing air to be drawn into housing. When making an initial cut thru center of uncut area, operate machine slower and back up if mower starts to clog.

Mow At Proper Intervals – Under most normal conditions you'll need to mow approximately every 4–5 days. But remember, grass grows at different rates at different times. This means that in order to maintain the same height-of-cut, which is a good practice, you'll need to cut more frequently in early spring; as the grass growth rate slows in mid summer, cut only every 8–10 days. If you are unable to mow for an extended period due to weather conditions or other reasons, convert to side discharge or bagging options or mow first with the height-of-cut at a high level; then mow again 2–3 days later with a lower height setting.

Note: When using mower in side discharge mode only discharge baffle must be removed. Mounting hardware must be installed in open holes.

Always Mow With Sharp Blades – A sharp blade cuts cleanly and without tearing or shredding the grass blade like a dull blade. Tearing and shredding causes the grass to turn brown at the edges which impairs growth and increases susceptibility to disease.

After Operating – To assure optimum performance, clean underside of mower housing, especially around kickers after each use. If residue is allowed to build up in mower housing and on inserts, cutting performance will decrease.

DANGER

POTENTIAL HAZARD

- Without the grass deflector or Recycler® assembly mounted in place, you and others are exposed to blade contact and thrown debris.

WHAT CAN HAPPEN

- Contact with rotating mower blade(s) and thrown debris will cause injury or death.

HOW TO AVOID THE HAZARD

- NEVER operate mower without grass deflector or Recycler® in place.
- Never put your hands or feet under the mower.
- Never try to clear discharge area or mower blades unless you move the blade control (PTO) to “DISENGAGED” and rotate the ignition key to “OFF.” Also remove the key and pull the wire off the spark plug.

