



Count on it.

Parts Catalog

Broom

GrandStand® Multi Force Mower

Model No. 78596—Serial No. 40000000 and Up



Ordering Replacement Parts

To order replacement parts, please supply the part number, the quantity, and the description of each part desired.

Understanding Reference Numbers

Each identified part in an illustration has a reference number. The reference number for a part also appears in the parts list, along with other information about the part.

This catalog uses two special reference number formats, one to indicate parts in a service assembly and another to indicate the quantity of a given part in an illustration.

Service Assembly Reference Numbers

Parts in service assemblies have reference numbers in the form a:b. The a represents the reference number of the entire service assembly and the b represents a sequential number unique to each part within the service assembly.

For example, a wheel assembly might be identified by reference number 6, the tire by 6:1, the valve by 6:2, and the wheel by 6:3. When you order the assembly identified by reference number 6, you receive all parts identified by reference numbers 6:1, 6:2, and 6:3. However, you may also order any part individually. Reference numbers of this type appear in illustration and in parts lists.

Reference Numbers Indicating Quantity

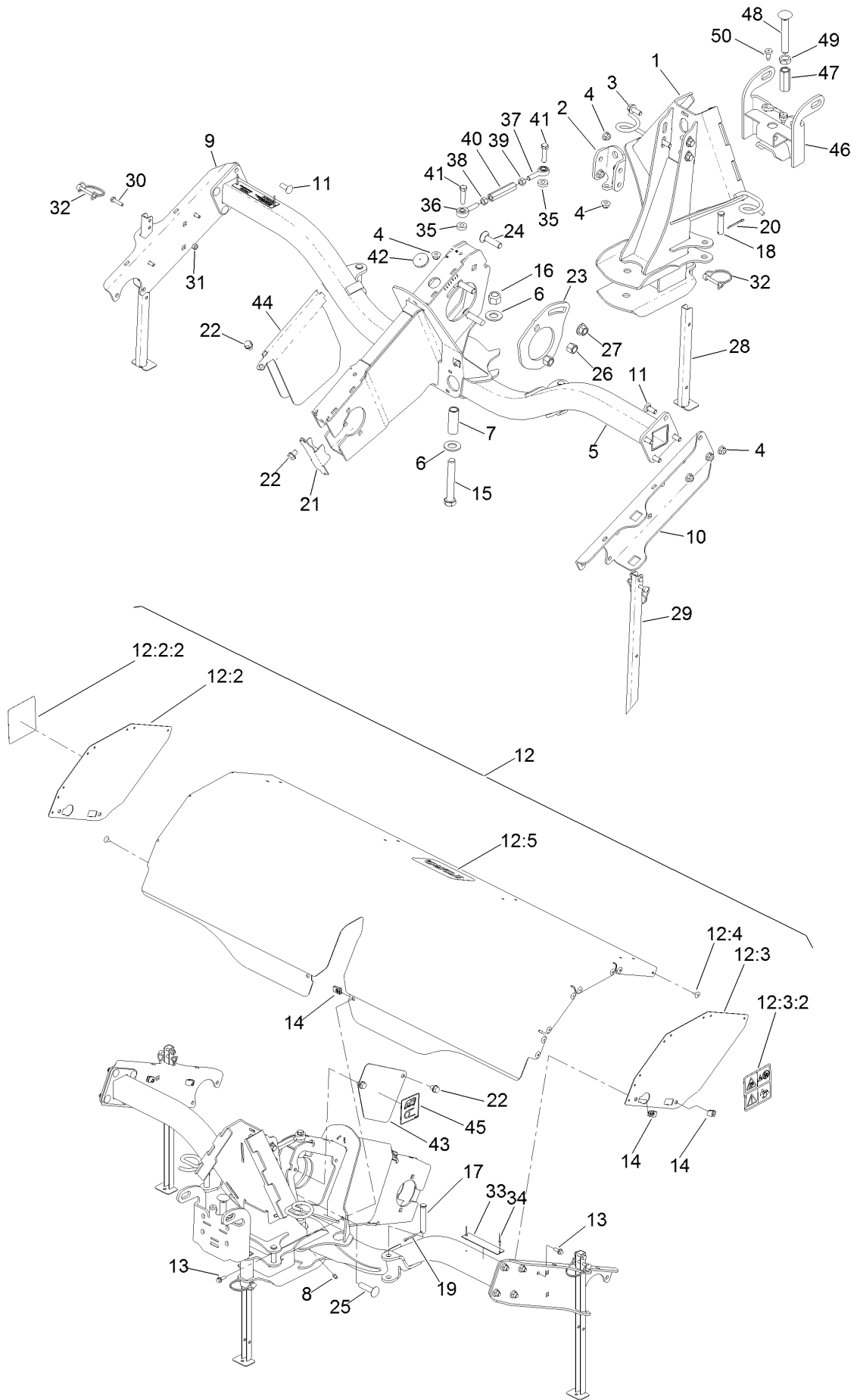
In an illustration, if a reference number indicates more than one part, the reference number has the form nX y. The n represents the quantity of the part, the X is the multiplication symbol, and the y represents the reference number.

For example, in an illustration, the reference number 2X 37 means that two of the parts identified by reference number 37 are indicated.

Contents

Frame Assembly..... 4
Hydraulic Hose Assembly..... 6
Hydraulic Motor Assembly No. 136-0537..... 8
Bristle Assembly..... 10

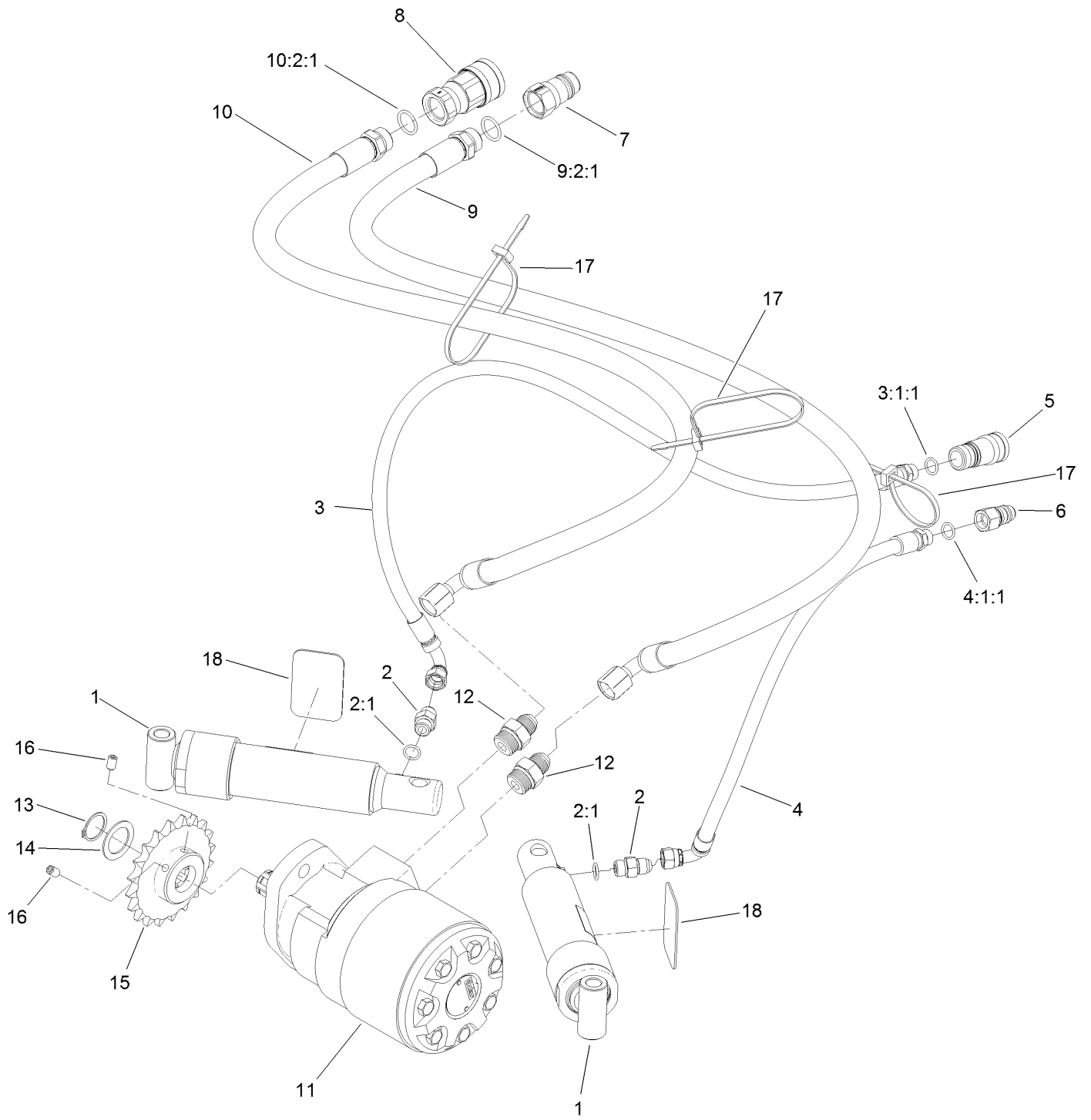
Frame Assembly



Frame Assembly (continued)

<i>Ref.</i>	<i>Part Number</i>	<i>Qty.</i>	<i>Description</i>	<i>Ref.</i>	<i>Part Number</i>	<i>Qty.</i>	<i>Description</i>
1	136-7370-03	1	Push Frame ASM	23	136-1298-03	1	Plate-Motor
2	136-7364-03	1	Channel-Coupler	24	3233-4	2	Screw-CARR
3	3234-42	4	Screw-HHF	25	9002719	1	Screw-CARR
4	104-8301	14	Nut-HF, NI	26	119-8969	2	Nut-Hex
5	137-0700-03	1	Broom Drive ASM	27	99-5107	1	Nut-Lock
6	106-0776	2	Washer-Pinion	28	136-7372-03	1	Leg-Stand
7	136-7365	1	Spacer	29	136-7366-03	2	Leg-Stand
8	302-5	1	Fitting-Grease	30	321-7	2	Screw-HH
9	136-1267-03	1	Bracket-Bristle Carrier, RH	31	3296-42	2	Nut-Lock, NI
10	136-1268-03	1	Bracket-Bristle Carrier, LH	32	100-1663	3	Pin-Hitch
11	3231-22	8	Screw-CARR	33	136-7420	1	Plate-Model
12	133-5373	1	Broom Shroud ASM	34	923786	2	Rivet
12:2	136-7446	1	LH End Cap ASM	35	5-0652	2	Spacer
12:2:2	116-8140	1	Decal-Warning	36	1-613204	1	Balljoint
12:3	136-7447	1	RH End Cap ASM	37	125-4389	1	Bearing-End, Rod
12:3:2	116-8140	1	Decal-Warning	38	3219-3	1	Nut-Hex
12:4	1-803035	16	Rivet-Pop	39	3219-20	1	Nut-Hex, LH
12:5	99-4693	1	Decal	40	136-7390	1	Turnbuckle
13	3234-4	6	Screw-HHF	41	323-8	2	Screw-HH
14	107069	6	Clip	42	136-5444	1	Grommet-Plug
15	327-29	1	Screw-HH	43	136-7371-03	1	Plate-Cover
16	127-3958	1	Nut-Lock, NI	44	136-7373-03	1	Bracket-Cover
17	283-55	2	Pin-Clevis	45	136-4146	1	Decal-Chain Adjust
18	283-5	2	Pin-Clevis	46	136-8312-01	1	Lock Bracket ASM
19	3272-17	2	Pin-Cotter	47	136-8392	1	Hex-Threaded
20	1-806800	2	Pin-Cotter	48	112-8046	1	Bolt-Carriage
21	136-1297-03	1	Plate	49	3218-6	1	Nut-Jam
22	32104-98	4	Screw-HWH,Thd Roll	50	87-8460	2	Bumper-Rubber

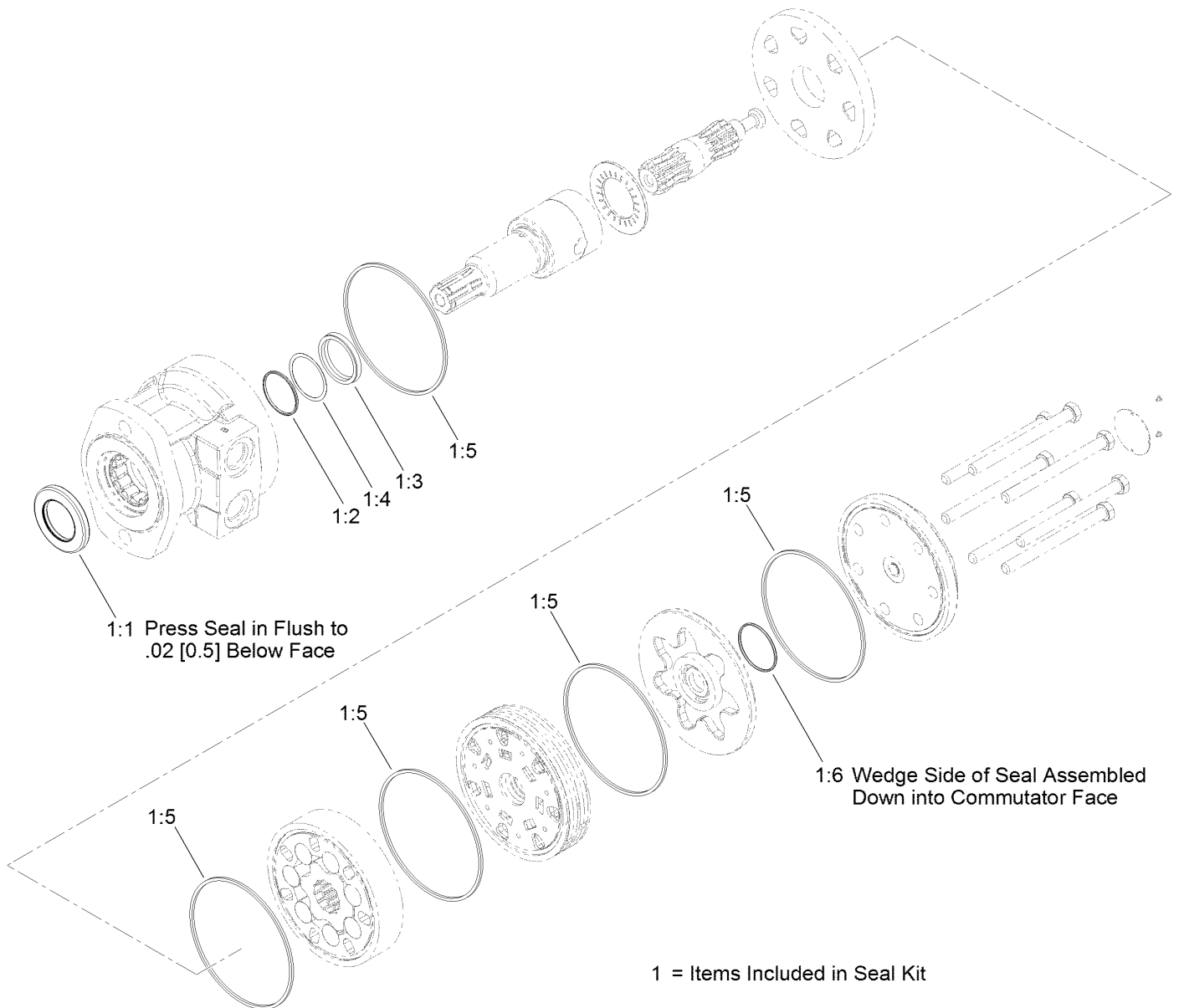
Hydraulic Hose Assembly



Hydraulic Hose Assembly (continued)

<i>Ref.</i>	<i>Part Number</i>	<i>Qty.</i>	<i>Description</i>	<i>Ref.</i>	<i>Part Number</i>	<i>Qty.</i>	<i>Description</i>
1	HYD13956	2	Cylinder-Ram	9:2:1	237-80	1	O-Ring
2	353-384	2	Fitting-Straight	10	136-7377	1	HYD Hose ASM
2:1	237-42	1	O-Ring	10:2:1	237-80	1	O-Ring
3	136-7374	1	Hose ASM	11	136-0537	1	Motor-Hydraulic
3:1:1	237-42	1	O-Ring	12	353-433	2	Fitting-Straight
4	136-7375	1	Hose ASM	13	32151-29	1	Ring-Retaining
4:1:1	237-42	1	O-Ring	14	10-8110	1	Washer-Thrust
5	63-1220	1	Coupler-Disconnect, Quick	15	136-1217	1	Sprocket-Chain
6	63-1240	1	Nipple-Disconnect, Quick	16	3246-17	2	Setscrew-HSH
7	136-5711	1	Disconnect-Quick, Male	17	3290-378	3	Tie-Cable
8	136-5706	1	Disconnect-Quick, Female	18	121-7646	2	Decal
9	136-7376	1	HYD Hose ASM				

Hydraulic Motor Assembly No. 136-0537

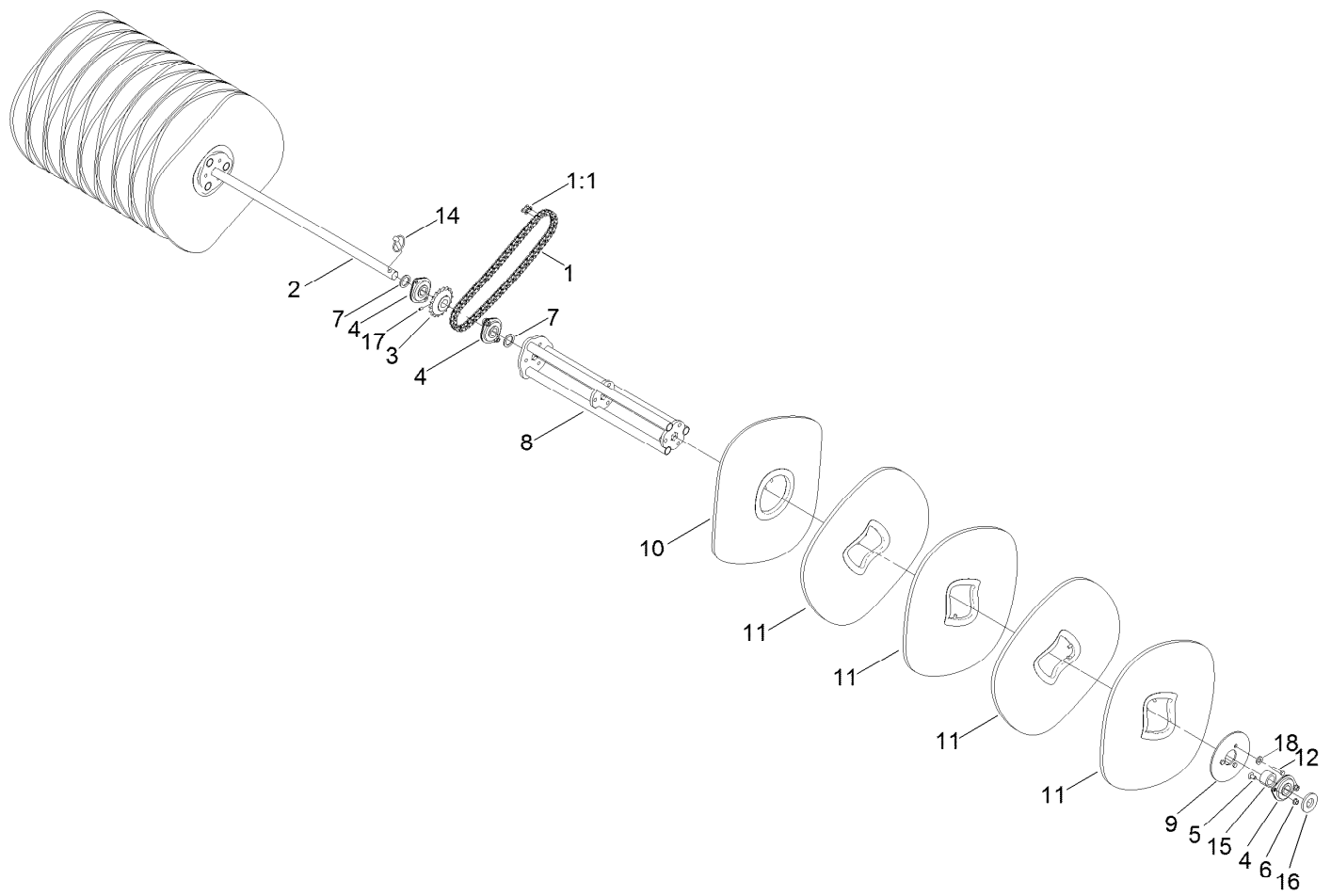


Hydraulic Motor Assembly No. 136-0537 (continued)

<i>Ref.</i>	<i>Part Number</i>	<i>Qty.</i>	<i>Description</i>	<i>Ref.</i>	<i>Part Number</i>	<i>Qty.</i>	<i>Description</i>
1	76-0800	1	Seal Kit	1:4		1	Washer-Back Up ●
1:1		1	Seal-Dirt And Water ●	1:5		5	Seal-Square, Ring (Inner) ●
1:2		1	Backup-Ring ●	1:6		1	Seal-Commutator ●
1:3		1	Seal-Shaft ●				

● Not serviced separately

Bristle Assembly



Bristle Assembly (continued)

<i>Ref.</i>	<i>Part Number</i>	<i>Qty.</i>	<i>Description</i>	<i>Ref.</i>	<i>Part Number</i>	<i>Qty.</i>	<i>Description</i>
1	133-8736	1	Chain-Roller	9	132-9460-03	2	Plate-Bristle, Carrier
1:1	ST34104	1	Link-Connecting, No. 50	10	136-8359	2	Bristle-Cone, Hybrid
2	137-0748	1	Hex Shaft	11	132-9440	32	Wafer-Broom
3	136-1216	1	Sprocket-Chain	12	137-3993	1	Screw-HH
4	137-0741	4	Bearing-Hex	14	283-71	2	Pin-Lynch
5	3231-21	8	Screw-CARR	15	93-1167	2	Spacer-Castor
6	32128-21	8	Nut-HF	16	137-0788	2	Washer
7	137-0787	2	Washer-Thrust	17	121-5989	2	Screw-Set, HSH
8	137-0753	2	Bristle-Carrier	18	3256-23	1	Washer-Plain



Count on it.