



Count on it.

Parts Catalog

TimeMaster 30in

Lawn Mower

Model No. 20200—Serial No. 314000001 and Up



Ordering Replacement Parts

To order replacement parts, please supply the part number, the quantity, and the description of each part desired.

Understanding Reference Numbers

Each identified part in an illustration has a reference number. The reference number for a part also appears in the parts list, along with other information about the part.

This catalog uses two special reference number formats, one to indicate parts in a service assembly and another to indicate the quantity of a given part in an illustration.

Service Assembly Reference Numbers

Parts in service assemblies have reference numbers in the form a:b. The a represents the reference number of the entire service assembly and the b represents a sequential number unique to each part within the service assembly.

For example, a wheel assembly might be identified by reference number 6, the tire by 6:1, the valve by 6:2, and the wheel by 6:3. When you order the assembly identified by reference number 6, you receive all parts identified by reference numbers 6:1, 6:2, and 6:3. However, you may also order any part individually. Reference numbers of this type appear in illustration and in parts lists.

Reference Numbers Indicating Quantity

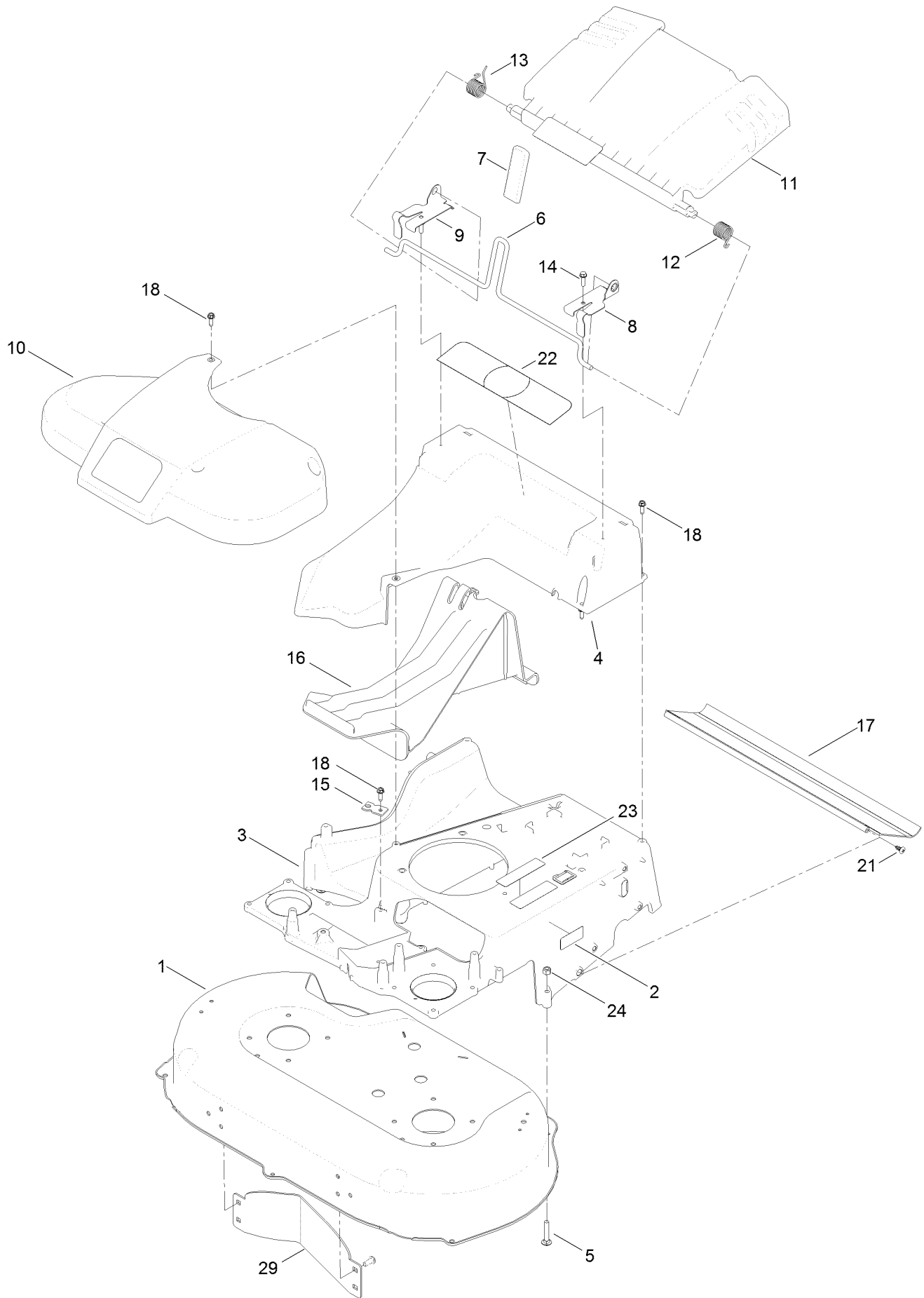
In an illustration, if a reference number indicates more than one part, the reference number has the form nX y. The n represents the quantity of the part, the X is the multiplication symbol, and the y represents the reference number.

For example, in an illustration, the reference number 2X 37 means that two of the parts identified by reference number 37 are indicated.

Contents

Deck and Frame Assembly	4
Belt, Spindle and Blade Assembly	6
Side Discharge Chute Assembly	8
Engine and Pulley Assembly	10
Front Wheel and Axle Assembly	12
Transmission, Rear Wheel and Height-of-Cut Assembly	14
Handle and Electrical Assembly	16
Bag Assembly	18
Attachments and Accessories	20

Deck and Frame Assembly

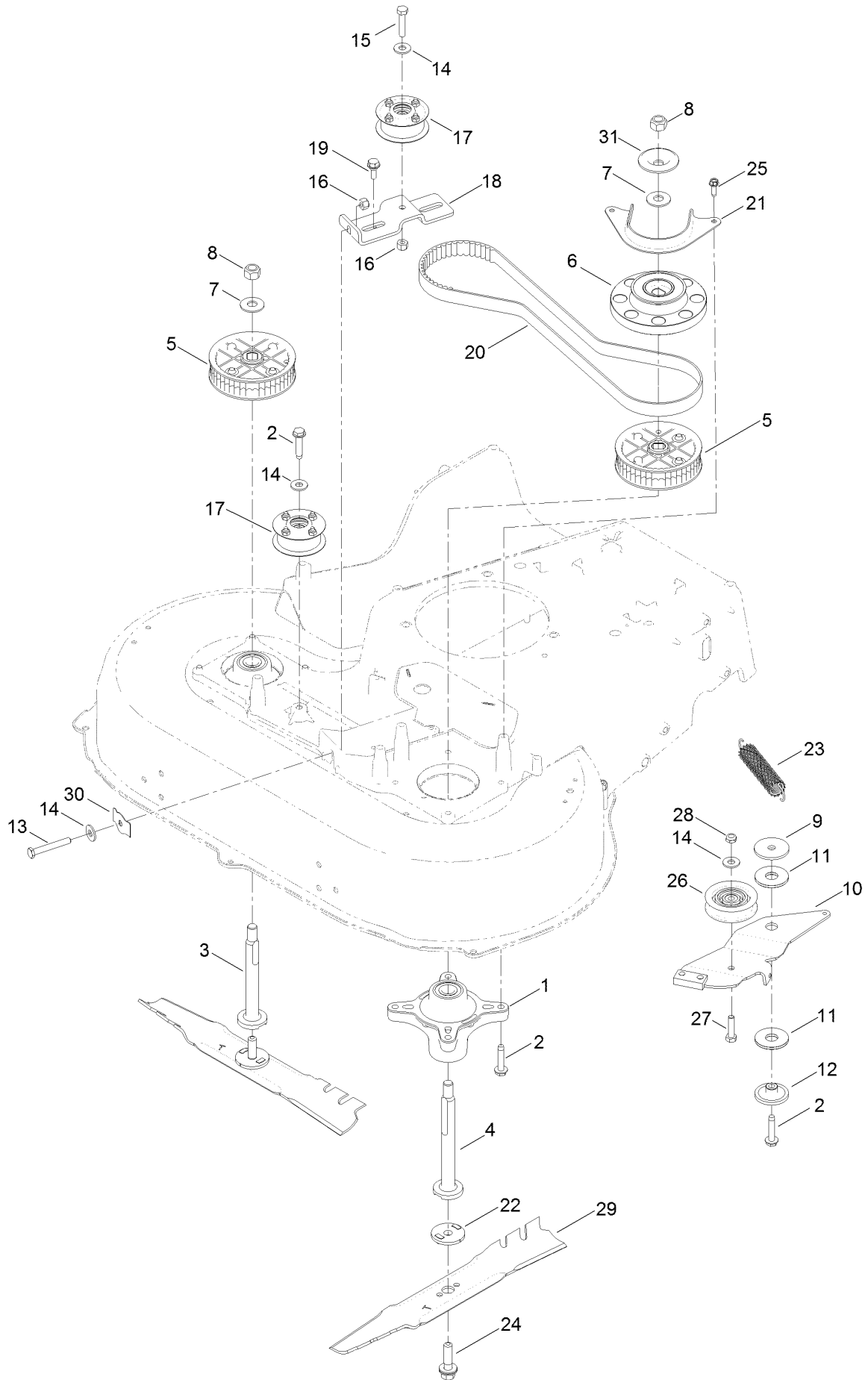


Deck and Frame Assembly (continued)

<i>Ref.</i>	<i>Part Number</i>	<i>Qty.</i>	<i>Description</i>	<i>Ref.</i>	<i>Part Number</i>	<i>Qty.</i>	<i>Description</i>
1	125-5087	1	Housing ASM	13	114-7924	1	Spring-Torsion
2	121-5684	1	Decal-Location, Service Dealer	14	46-8091	2	Screw-HWH
3	121-9198-01	1	Frame	15	107-7497	1	Bracket-Cable, Traction
4	120-3336	1	Chute	16	120-5225	1	Plug-Mulch
5	3230-5	2	Screw-CARR	17	120-6241	1	Shield-Trailing
6	120-3344	1	Rod-Release, Handle	18	49-2040	9	Screw-HWHTF
7	120-7018	1	Grip-Lever	21	117-1092	2	Screw-PTH
8	121-9114	1	Bracket-Door, LH	22	121-2398	1	Decal-Position, Handle
9	121-9115	1	Bracket-Door, RH	23	117-2718	1	Decal-Arrester, Spark
10	120-7049	1	Belt Cover ASM	24	3296-29	2	Nut-Lock, NI
11	120-7048	1	Rear Deflector ASM	29	130-2352-01	1	Baffle-Control
12	115-2859	1	Spring-Torsion	99	125-5072	1	Frame Plate Kit ●

● Not illustrated

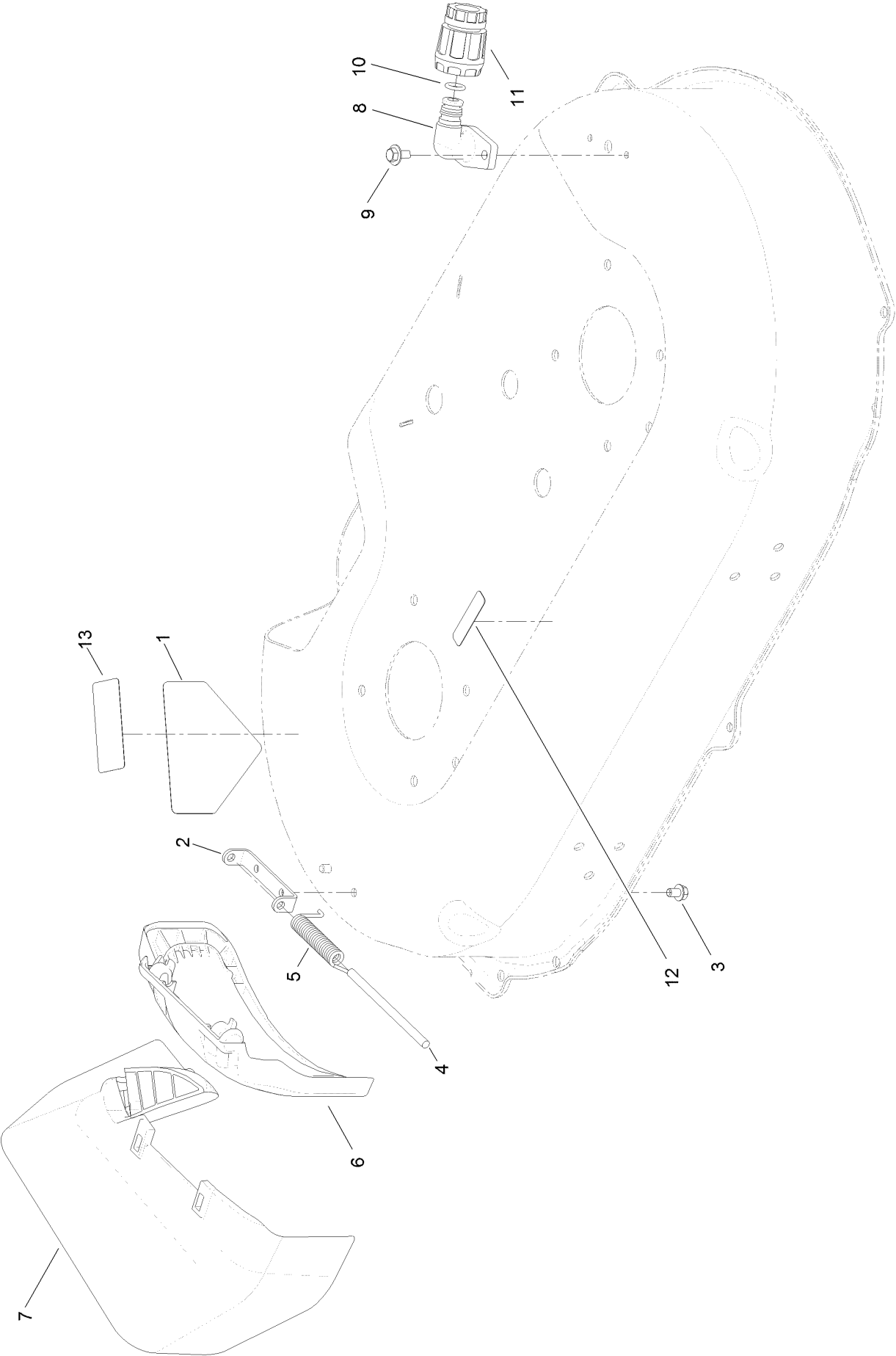
Belt, Spindle and Blade Assembly



Belt, Spindle and Blade Assembly (continued)

<i>Ref.</i>	<i>Part Number</i>	<i>Qty.</i>	<i>Description</i>	<i>Ref.</i>	<i>Part Number</i>	<i>Qty.</i>	<i>Description</i>
1	121-9107	2	Spindle ASM	17	125-2532	2	Pulley ASM
2	32144-57	10	Screw	18	120-3348	1	Bracket-Idler
3	120-5234	1	Shaft-Spindle	19	120-7024	2	Screw-Shoulder, HHF
4	120-5235	1	Shaft-Spindle	20	120-3335	1	Belt-Synchronous
5	121-9100	2	Sprocket	21	120-5245-03	1	Guide-Belt, Spindle
6	120-3334	1	Pulley-Brake, Spindle	22	120-5236	2	Adapter-Blade
7	109-9505	2	Washer-Spring	23	121-5808	1	Spring-Extension, Brake
8	130-2384	2	Nut-Hex	24	125-2466	2	Bolt-Blade
9	63-7400	1	Washer-Rebound	25	49-2040	2	Screw-HWHTF
10	120-6242	1	Arm-Brake	26	120-7082	1	Pulley-Idler
11	121-2305	2	Washer-Friction, Composite	27	322-6	1	Screw-HH
12	120-9490	1	Spacer	28	3296-47	1	Nut-Lock, NI
13	9114524	1	Bolt-TAP, HH	29	116-6358-03	2	Blade-Rotary
14	3256-3	4	Washer-Flat	30	121-2336	1	Spring-Flat
15	322-7	1	Screw-HH	31	130-2364	1	Washer-Cup
16	3296-29	2	Nut-Lock, NI				

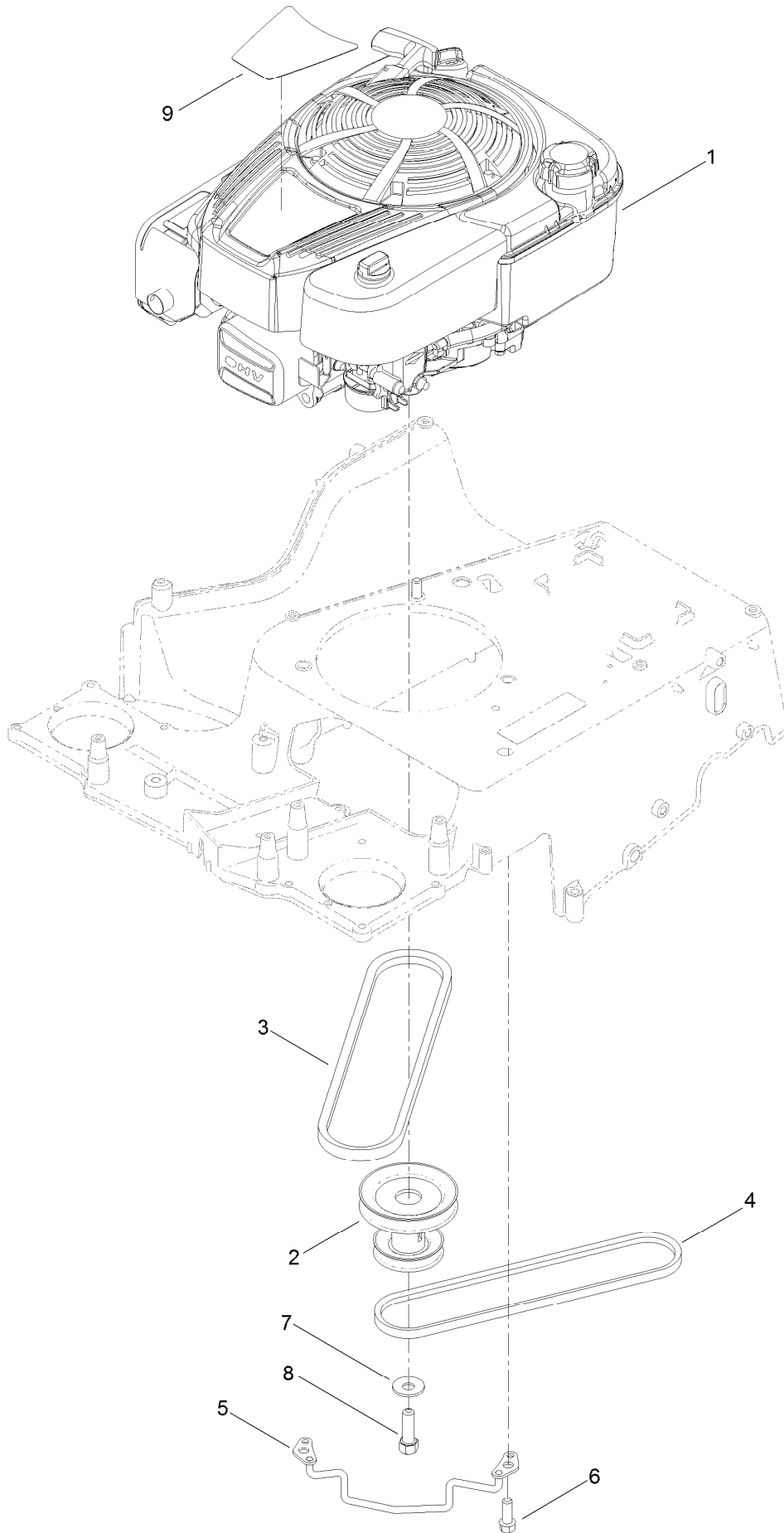
Side Discharge Chute Assembly



Side Discharge Chute Assembly (continued)

<i>Ref.</i>	<i>Part Number</i>	<i>Qty.</i>	<i>Description</i>	<i>Ref.</i>	<i>Part Number</i>	<i>Qty.</i>	<i>Description</i>
1	94-8072	1	Decal-Danger	8	95-2747	1	Fitting-Washout
2	112-6416	1	Bracket-Cover	9	46-8560	2	Screw-HHFTF
3	99-8445	2	Screw-HWH	10	46-6290	1	O-Ring
4	99-5291	1	Rod-Cover	11	95-3270	1	Connector-Hose
5	127-0721	1	Spring-Torsion, Cover	12	120-9570	1	Decal-Warning
6	125-5091	1	Deflector-Side	13	125-5092	1	Decal-Placement, Foot
7	121-2319	1	Chute-Discharge, Side				

Engine and Pulley Assembly



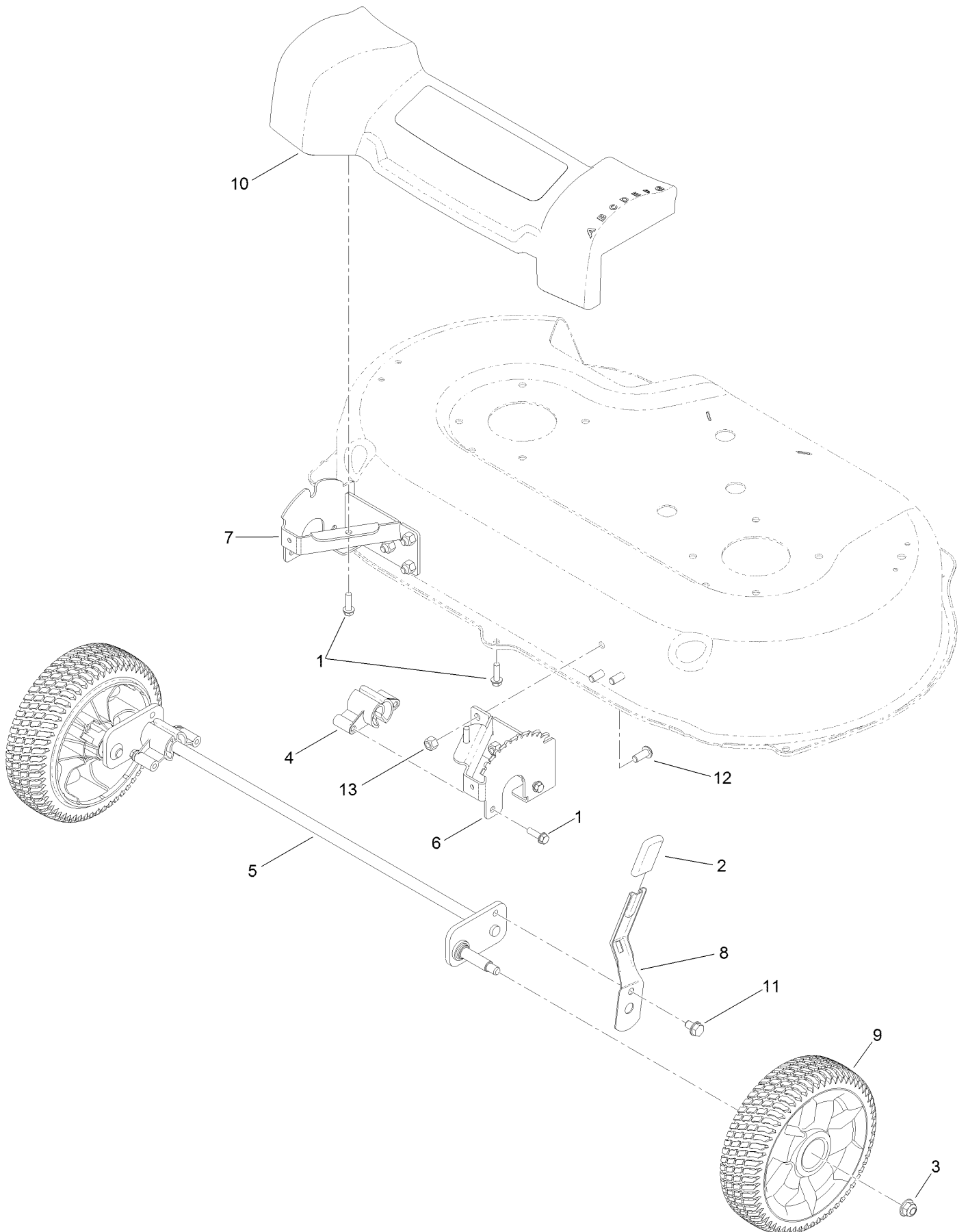
Engine and Pulley Assembly (continued)

<i>Ref.</i>	<i>Part Number</i>	<i>Qty.</i>	<i>Description</i>	<i>Ref.</i>	<i>Part Number</i>	<i>Qty.</i>	<i>Description</i>
1		1	Engine-Briggs, 121S170127F1 ●■	5	120-7077	1	Guide-Belt
2	120-3333	1	Pulley-Engine	6	95-1726	3	Screw-Taptite
3	121-5765	1	V-Belt	7	3290-465	1	Washer-Belleville
4	120-9470	1	V-Belt, Traction	8	26-0671	1	Screw-HH
				9	121-2318	1	Decal-Shroud

● Not serviced separately

■ Obtain parts from www.briggsandstratton.com

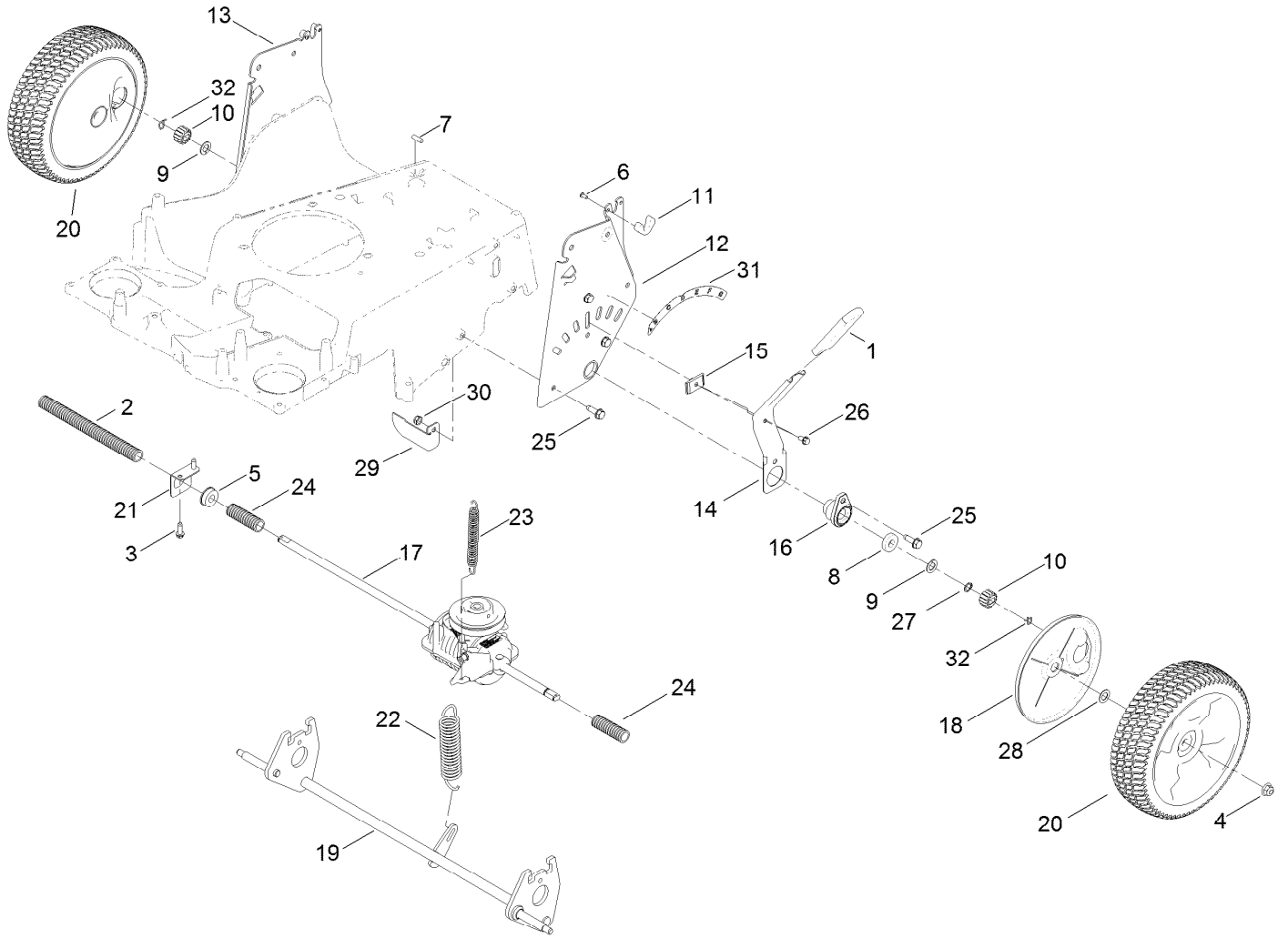
Front Wheel and Axle Assembly



Front Wheel and Axle Assembly (continued)

<i>Ref.</i>	<i>Part Number</i>	<i>Qty.</i>	<i>Description</i>	<i>Ref.</i>	<i>Part Number</i>	<i>Qty.</i>	<i>Description</i>
1	46-8091	7	Screw-HWH	8	120-7043	1	Arm-Spring
2	120-9535	1	Grip-Lever	9	125-2510	2	8 Inch Wheel ASM
3	104-8301	2	Nut-HF, NI	10	125-5027	1	Front Cover ASM
4	125-2495	2	Bushing-Pivot, Front	11	700057	1	Screw-HWH
5	125-5061	1	Axle-Front	12	3274-55	6	Screw-HSBH
6	120-7037-03	1	Plate-HOC, LH	13	3296-29	6	Nut-Lock, NI
7	120-7038-03	1	Plate-HOC, RH				

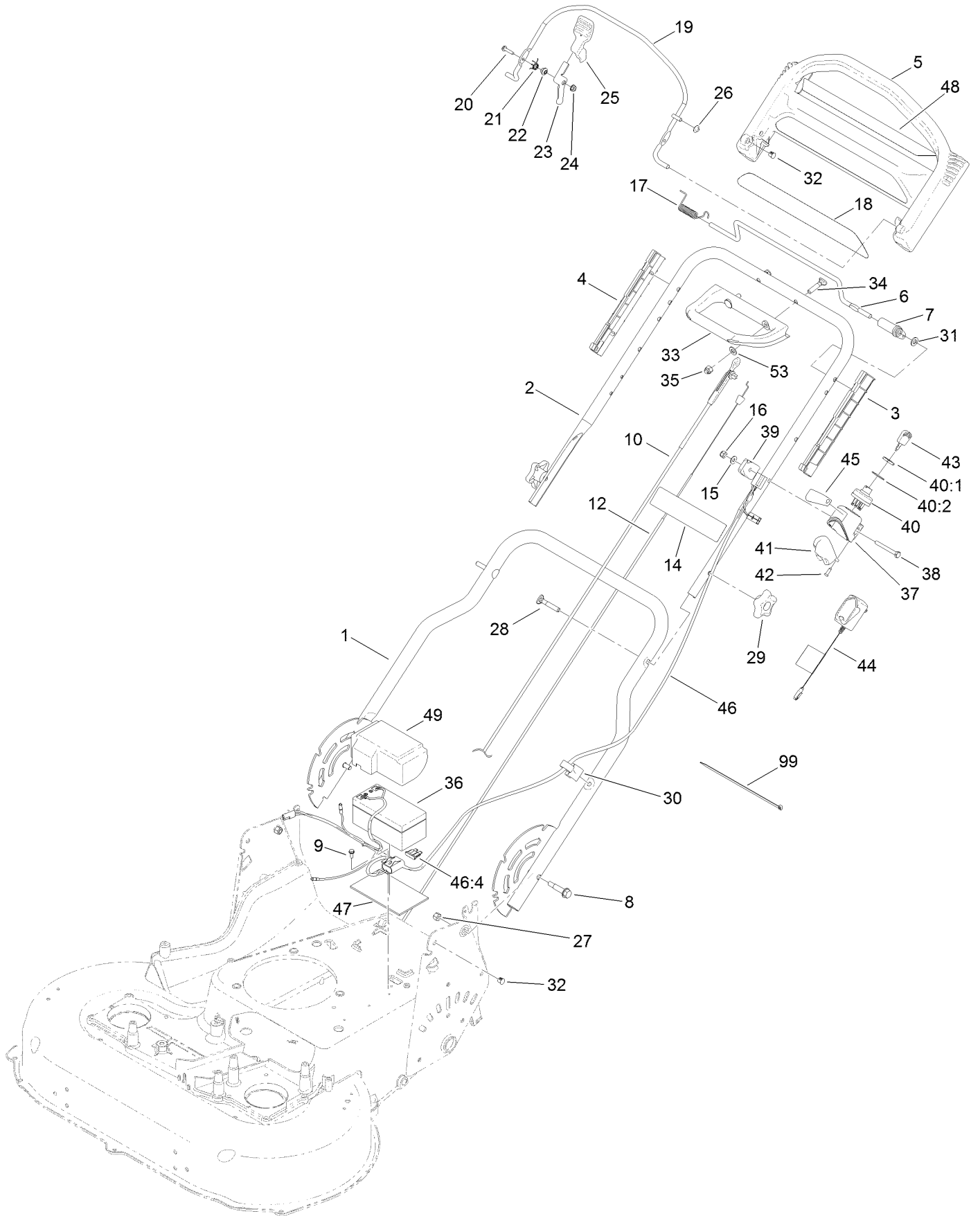
Transmission, Rear Wheel and Height-of-Cut Assembly



Transmission, Rear Wheel and Height-of-Cut Assembly (continued)

<i>Ref.</i>	<i>Part Number</i>	<i>Qty.</i>	<i>Description</i>	<i>Ref.</i>	<i>Part Number</i>	<i>Qty.</i>	<i>Description</i>
1	1-633295	1	Grip-Lever, Lift	17	130-2388	1	Transmission-Mv502
2	121-5799	1	Conduit-Convolved	18	120-6233	2	Cover-Gear
3	49-2040	2	Screw-HWHTF	19	125-5062	1	Axle-Rear
4	104-8301	2	Nut-HF, NI	20	125-2509	2	10 Inch Wheel Gear ASM
5	104-8699	1	Bearing-Ball	21	120-7008	1	Mount-Bearing
6	105-9437	2	Screw-PPH	22	120-7026	1	Spring-Extension
7	106-5681	1	Pin-Stop	23	120-7027	1	Spring-Extension
8	109-8020	2	Bearing-Ball	24	121-5800	2	Conduit-Convolved
9	110-7191	2	Washer-Thrust	25	701243	8	Screw-HWHTF
10	110-9417	2	Gear-Pinion, 15T	26	32144-4	1	Screw-HWH
11	115-8406	2	Anchor-Bag	27	32151-61	1	Ring-Retaining
12	120-3342-03	1	Plate-HOC, LH	28	36-4780	2	Washer-Plain
13	120-3343-03	1	Plate-HOC, RH	29	121-5821	1	Bracket-Stop
14	120-5208	1	Arm-Spring, Rear	30	3296-47	1	Nut-Lock, NI
15	120-5209	1	Key-Springarm	31	125-2497	1	Decal-HOC, Rear
16	120-5210	2	Retainer-Bearing	32	130-2369	2	Pin-Snap

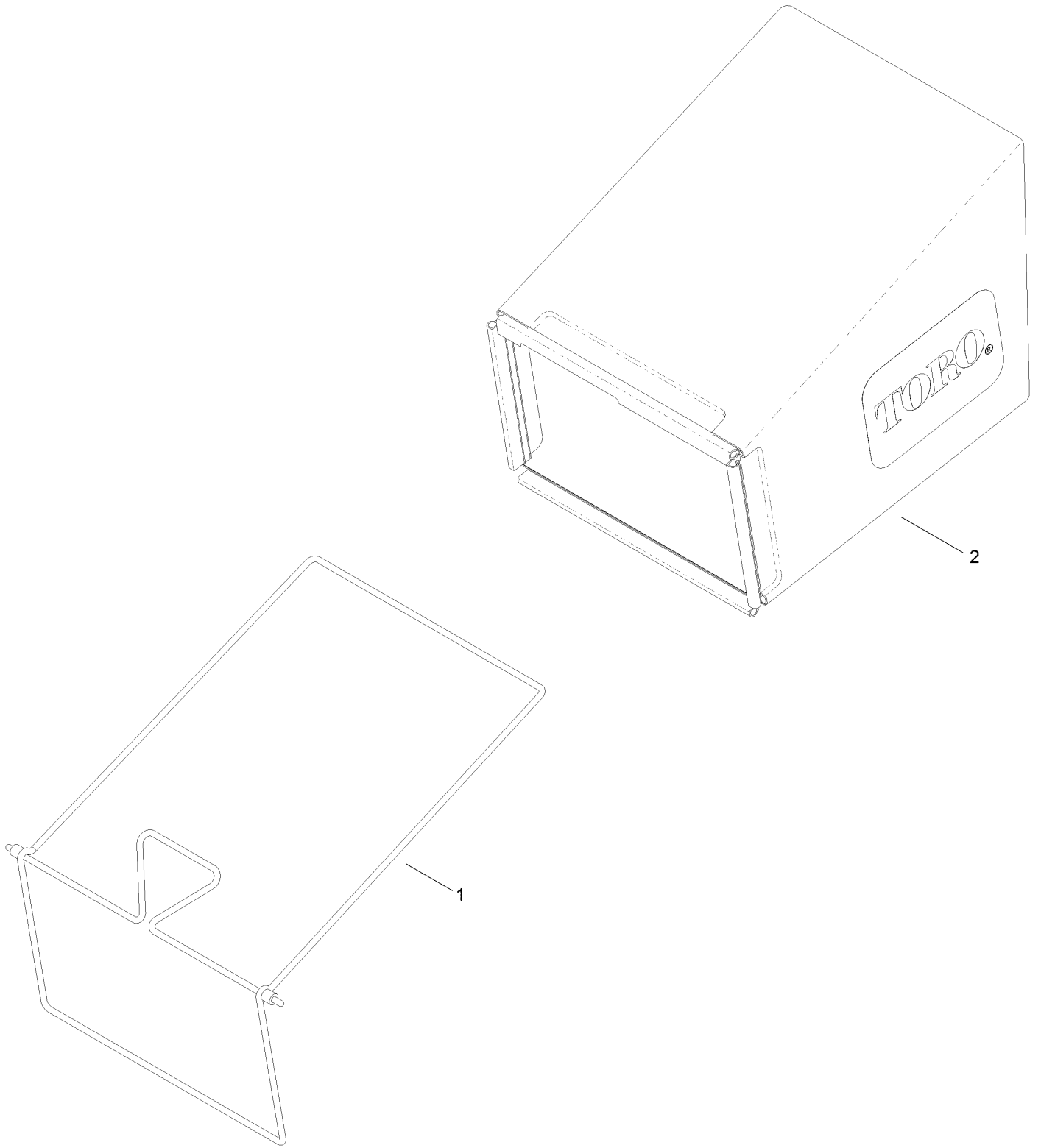
Handle and Electrical Assembly



Handle and Electrical Assembly (continued)

<i>Ref.</i>	<i>Part Number</i>	<i>Qty.</i>	<i>Description</i>	<i>Ref.</i>	<i>Part Number</i>	<i>Qty.</i>	<i>Description</i>
1	120-5204-05	1	Handle-Lower	29	117-5976	2	Knob-Handle
2	121-5783-05	1	Handle-Upper	30	114-7988	1	Guide-Cable
3	105-6842	1	Guide-LH	31	3256-23	1	Washer-Plain
4	105-6841	1	Guide-RH	32	104-9368	3	Plug-Dome
5	104-8678	1	Handle-Control	33	120-7087	1	Handle-Assist, Traction
6	99-1588	1	Bar-Control, Traction	34	92-4095	2	Screw-Handle
7	99-1589	1	Lever-Traction	35	125-5028	2	Nut-Hex, Nylon Cap
8	120-7025	2	Bolt-Shoulder, HHF	36	106-8397	1	Battery-Wet
9	32144-1	1	Screw-Taptite	37	108-3795	1	Housing-Switch, Key
10	120-6243	1	Cable-Brake, BBC	38	321-50	1	Screw-HH
12	127-6867	1	Cable-Traction	39	92-7729	1	Anchor-Cable, Upper
14	104-7953	1	Decal-Warning	40	23-0660	1	Switch-Starter
15	3256-1	1	Washer-Flat	40:1	218-461	1	Nut-HH
16	3296-73	1	Nut-Lock, NI	40:2	3254-5	1	Washer-Tooth, Internal
17	121-9118	1	Spring-Torsion	41	108-3796	1	Cover-Swtch
18	117-1019	1	Decal	42	32144-111	2	Screw-PPH
19	108-3788-03	1	Bail-Brake	43	700918	1	Key
20	106-9169	1	Screw-HWH	44	114-1588	1	Charger-Battery
21	107-7462	1	Spring-Torsion	45	108-9751	1	Decal-Switch, Ignition
22	107-7463	1	Spacer	46	117-0070	1	Harness-Wire
23	106-6802	1	Lever	46:4	99-6124	1	Fuse-40 Amp
24	32128-17	1	Nut-Lock, Flange	47	108-0987	1	Foam-Battery
25	112-8884	1	Knob	48	121-2399	1	Decal-Assist, Traction
26	3290-337	1	Nut-Speed	49	120-3329	1	Cover-Battery
27	3296-29	2	Nut-Lock, NI	53	71-9320	2	Spacer
28	92-2260	2	Screw-Handle	99	614249	2	Tie-Cable

Bag Assembly



Bag Assembly (continued)

<i>Ref.</i>	<i>Part Number</i>	<i>Qty.</i>	<i>Description</i>
1	121-5766-03	1	Frame-Bag
2	121-5770	1	Bag-Grass

Attachments and Accessories

For 20200 TimeMaster 30in Lawn Mower

Product Name	Model/Part
Engine Maintenance Kit.....	130-8146
Replacement Blade Kit	20120P
Mower Cover	490-7461

Notes:

Notes:

Notes:



Count on it.