



Count on it.

Parts Catalog

TimeMaster 30in

Lawn Mower

Model No. 20200—Serial No. 315000001 and Up



Ordering Replacement Parts

To order replacement parts, please supply the part number, the quantity, and the description of each part desired.

Understanding Reference Numbers

Each identified part in an illustration has a reference number. The reference number for a part also appears in the parts list, along with other information about the part.

This catalog uses two special reference number formats, one to indicate parts in a service assembly and another to indicate the quantity of a given part in an illustration.

Service Assembly Reference Numbers

Parts in service assemblies have reference numbers in the form a:b. The a represents the reference number of the entire service assembly and the b represents a sequential number unique to each part within the service assembly.

For example, a wheel assembly might be identified by reference number 6, the tire by 6:1, the valve by 6:2, and the wheel by 6:3. When you order the assembly identified by reference number 6, you receive all parts identified by reference numbers 6:1, 6:2, and 6:3. However, you may also order any part individually. Reference numbers of this type appear in illustration and in parts lists.

Reference Numbers Indicating Quantity

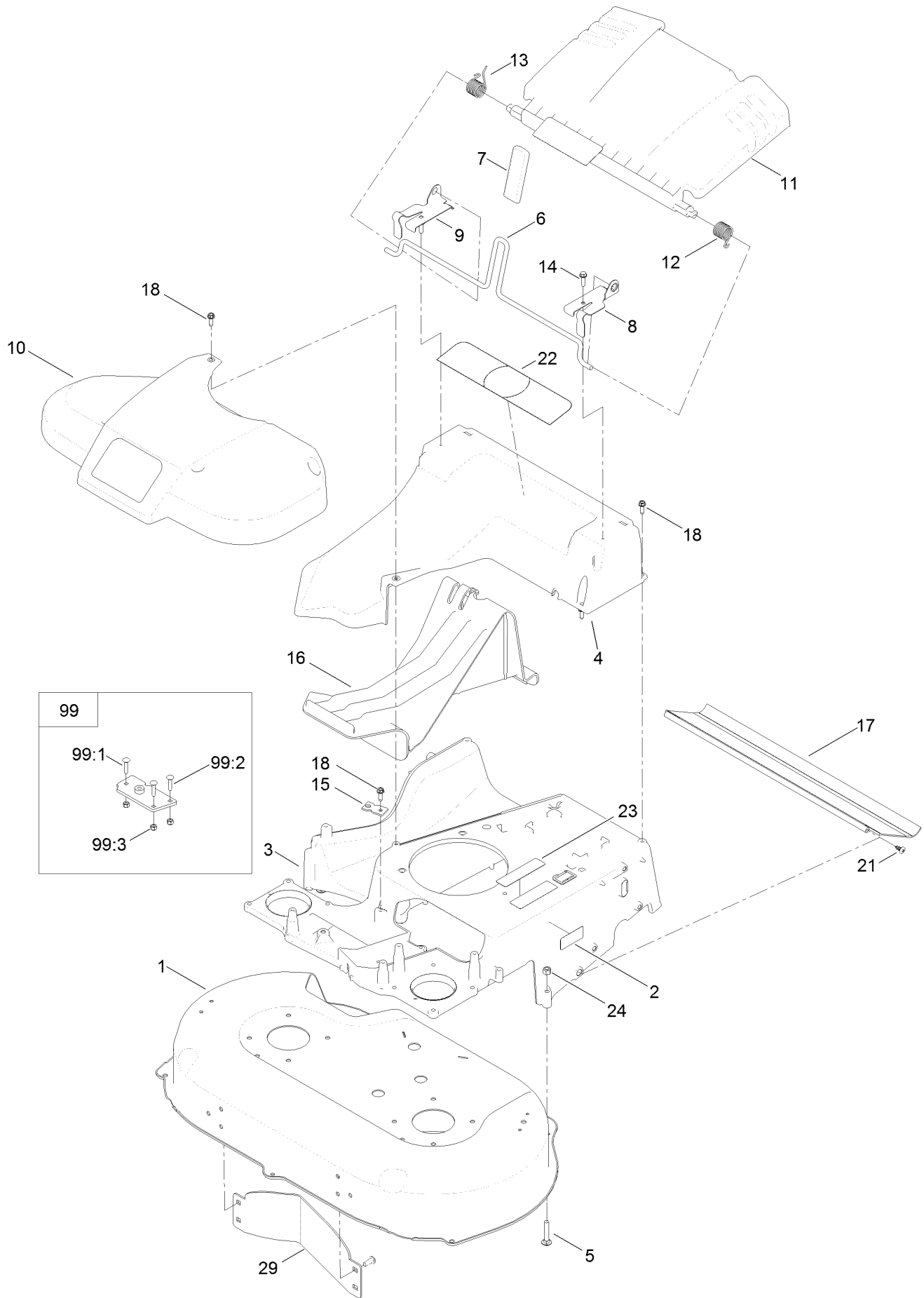
In an illustration, if a reference number indicates more than one part, the reference number has the form nX y. The n represents the quantity of the part, the X is the multiplication symbol, and the y represents the reference number.

For example, in an illustration, the reference number 2X 37 means that two of the parts identified by reference number 37 are indicated.

Contents

| | |
|---|----|
| Deck and Frame Assembly | 4 |
| Belt, Spindle and Blade Assembly | 6 |
| Side Discharge Chute Assembly | 8 |
| Bag Assembly | 10 |
| Engine and Pulley Assembly | 12 |
| Front Wheel and Axle Assembly | 14 |
| Transmission, Rear Wheel and Height-of-Cut Assembly | 16 |
| Handle Assembly | 18 |
| Attachments and Accessories | 20 |

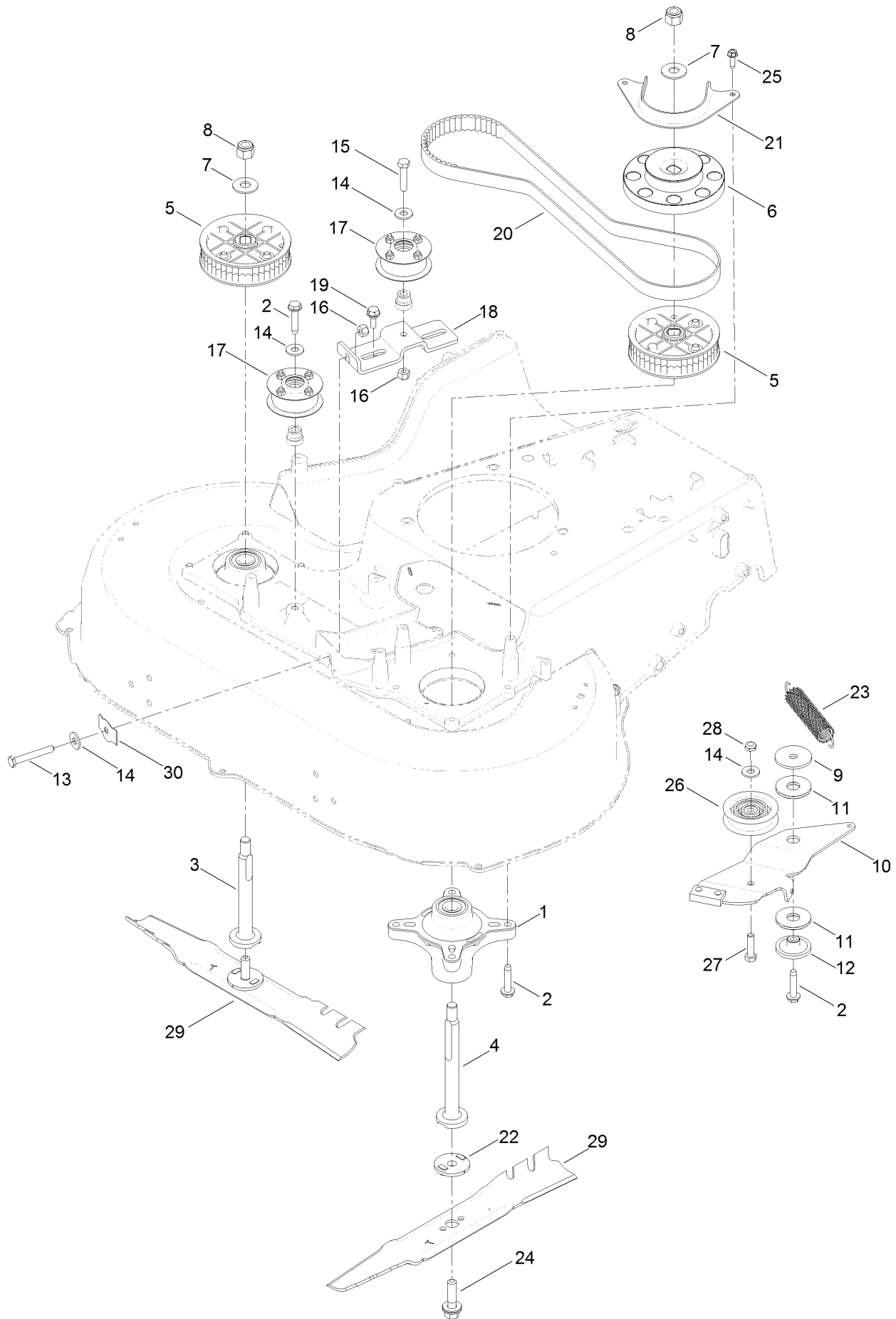
Deck and Frame Assembly



Deck and Frame Assembly (continued)

| <i>Ref.</i> | <i>Part Number</i> | <i>Qty.</i> | <i>Description</i> | <i>Ref.</i> | <i>Part Number</i> | <i>Qty.</i> | <i>Description</i> |
|-------------|--------------------|-------------|--------------------------------|-------------|--------------------|-------------|-------------------------|
| 1 | 125-5087 | 1 | Housing ASM | 14 | 46-8091 | 2 | Screw-HWH |
| 2 | 121-5684 | 1 | Decal-Location, Service Dealer | 15 | 107-7497 | 1 | Bracket-Cable, Traction |
| 3 | 121-9198-01 | 1 | Frame | 16 | 120-5225 | 1 | Plug-Mulch |
| 4 | 120-3336 | 1 | Chute | 17 | 120-6241 | 1 | Shield-Trailing |
| 5 | 3230-5 | 2 | Screw-CARR | 18 | 49-2040 | 9 | Screw-HWHTF |
| 6 | 120-3344 | 1 | Rod-Release, Handle | 21 | 117-1092 | 2 | Screw-PTH |
| 7 | 120-7018 | 1 | Grip-Lever | 22 | 121-2398 | 1 | Decal-Position, Handle |
| 8 | 121-9114 | 1 | Bracket-Door, LH | 23 | 117-2718 | 1 | Decal-Arrester, Spark |
| 9 | 121-9115 | 1 | Bracket-Door, RH | 24 | 3296-29 | 2 | Nut-Lock, NI |
| 10 | 120-7049 | 1 | Belt Cover ASM | 29 | 130-2352-01 | 1 | Baffle-Control |
| 11 | 120-7048 | 1 | Rear Deflector ASM | 99 | 125-5072 | 1 | Frame Plate Kit |
| 12 | 115-2859 | 1 | Spring-Torsion | 99:1 | 125-2542 | 1 | Plate-Frame |
| 13 | 114-7924 | 1 | Spring-Torsion | 99:2 | 3229-3 | 3 | Screw-CARR |
| | | | | 99:3 | 3296-42 | 3 | Nut-Lock, NI |

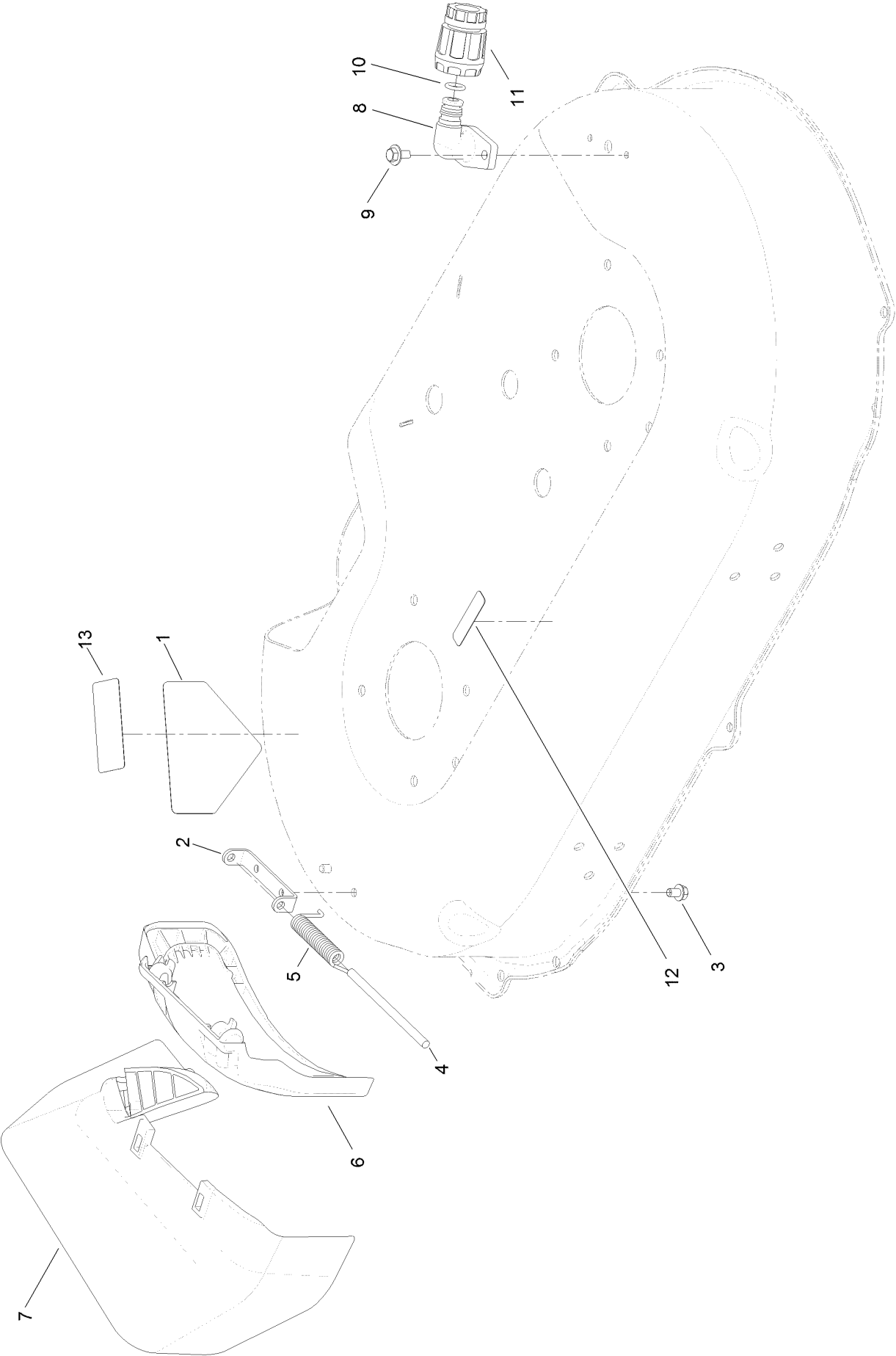
Belt, Spindle and Blade Assembly



Belt, Spindle and Blade Assembly (continued)

| <i>Ref.</i> | <i>Part Number</i> | <i>Qty.</i> | <i>Description</i> | <i>Ref.</i> | <i>Part Number</i> | <i>Qty.</i> | <i>Description</i> |
|-------------|--------------------|-------------|----------------------------|-------------|--------------------|-------------|-------------------------|
| 1 | 120-6234 | 2 | Spindle ASM | 16 | 3296-29 | 2 | Nut-Lock, NI |
| 2 | 32144-57 | 10 | Screw | 17 | 131-4529 | 2 | Pulley Kit |
| 3 | 120-5234 | 1 | Shaft-Spindle | 18 | 120-3348 | 1 | Bracket-Idler |
| 4 | 120-5235 | 1 | Shaft-Spindle | 19 | 120-7024 | 2 | Screw-Shoulder, HHF |
| 5 | 121-9100 | 2 | Sprocket | 20 | 120-3335 | 1 | Belt-Synchronous |
| 6 | 130-6664 | 1 | Pulley-Brake, Spindle | 21 | 120-5245-03 | 1 | Guide-Belt, Spindle |
| 7 | 109-9505 | 2 | Washer-Spring | 22 | 120-5236 | 2 | Adapter-Blade |
| 8 | 3296-19 | 2 | Nut-Hex | 23 | 121-5808 | 1 | Spring-Extension, Brake |
| 9 | 63-7400 | 1 | Washer-Rebound | 24 | 125-2466 | 2 | Bolt-Blade |
| 10 | 120-6242 | 1 | Arm-Brake | 25 | 49-2040 | 2 | Screw-HWHTF |
| 11 | 121-2305 | 2 | Washer-Friction, Composite | 26 | 120-7082 | 1 | Pulley-Idler |
| 12 | 120-9490 | 1 | Spacer | 27 | 322-6 | 1 | Screw-HH |
| 13 | 9114524 | 1 | Bolt-TAP, HH | 28 | 3296-47 | 1 | Nut-Lock, NI |
| 14 | 3256-3 | 4 | Washer-Flat | 29 | 116-6358-03 | 2 | Blade-Rotary |
| 15 | 322-7 | 1 | Screw-HH | 30 | 121-2336 | 1 | Spring-Flat |

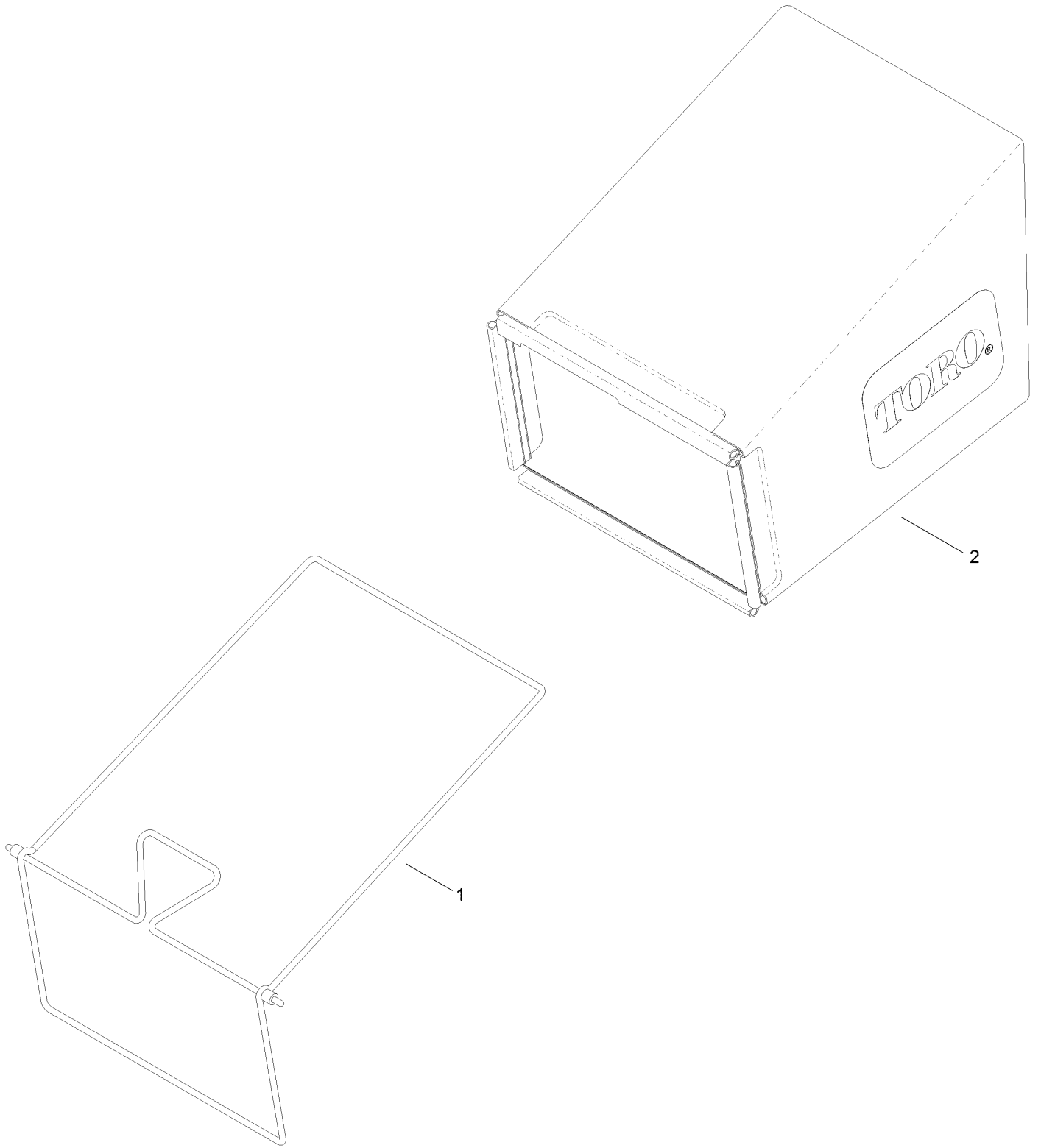
Side Discharge Chute Assembly



Side Discharge Chute Assembly (continued)

| <i>Ref.</i> | <i>Part Number</i> | <i>Qty.</i> | <i>Description</i> | <i>Ref.</i> | <i>Part Number</i> | <i>Qty.</i> | <i>Description</i> |
|-------------|--------------------|-------------|-----------------------|-------------|--------------------|-------------|-----------------------|
| 1 | 94-8072 | 1 | Decal-Danger | 8 | 95-2747 | 1 | Fitting-Washout |
| 2 | 112-6416 | 1 | Bracket-Cover | 9 | 46-8560 | 2 | Screw-HHFTF |
| 3 | 99-8445 | 2 | Screw-HWH | 10 | 46-6290 | 1 | O-Ring |
| 4 | 99-5291 | 1 | Rod-Cover | 11 | 95-3270 | 1 | Connector-Hose |
| 5 | 127-0721 | 1 | Spring-Torsion, Cover | 12 | 120-9570 | 1 | Decal-Warning |
| 6 | 125-5091 | 1 | Deflector-Side | 13 | 125-5092 | 1 | Decal-Placement, Foot |
| 7 | 121-2319 | 1 | Chute-Discharge, Side | | | | |

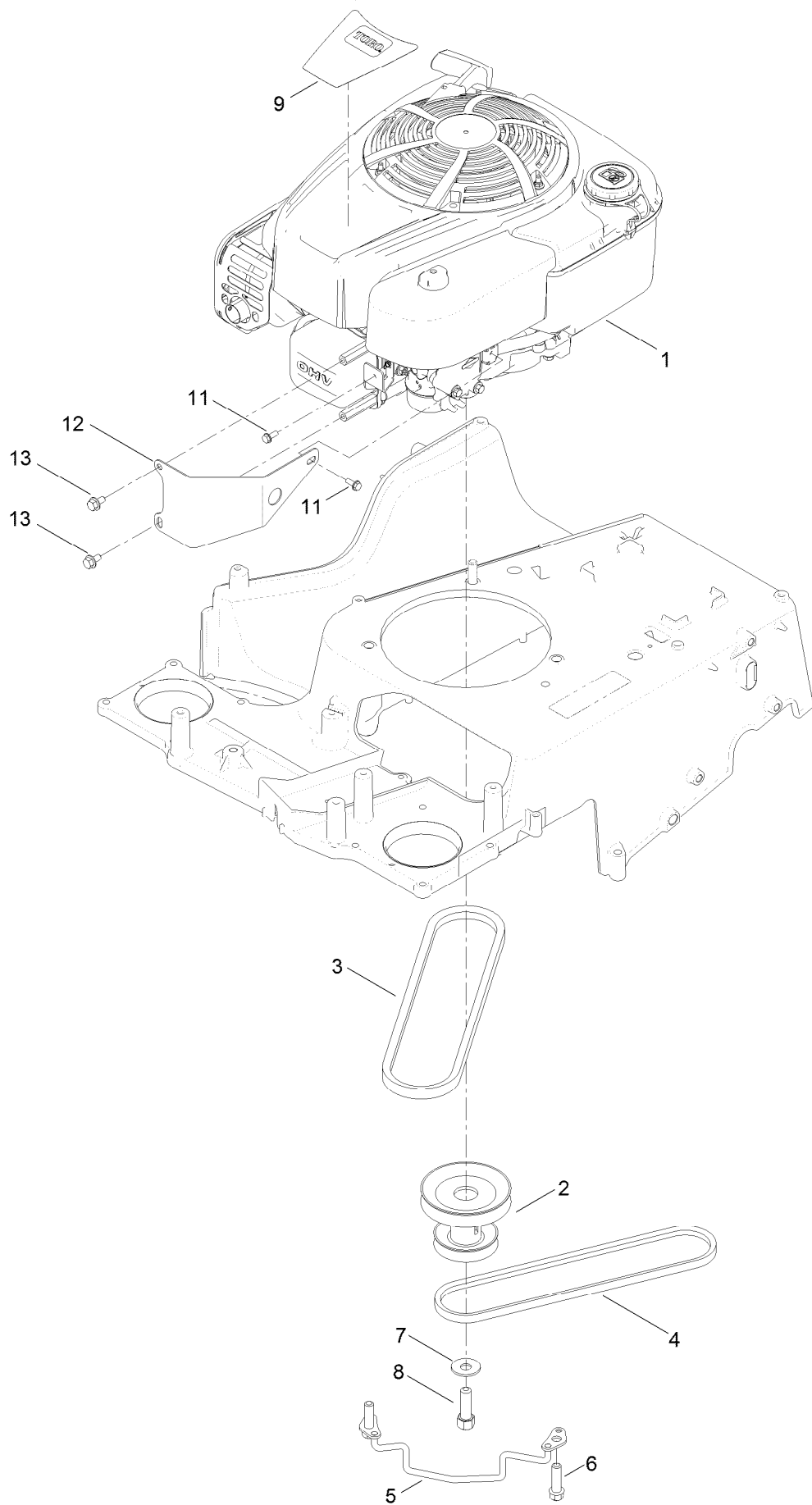
Bag Assembly



Bag Assembly (continued)

| <i>Ref.</i> | <i>Part Number</i> | <i>Qty.</i> | <i>Description</i> |
|-------------|--------------------|-------------|--------------------|
| 1 | 121-5766-03 | 1 | Frame-Bag |
| 2 | 121-5770 | 1 | Bag-Grass |

Engine and Pulley Assembly



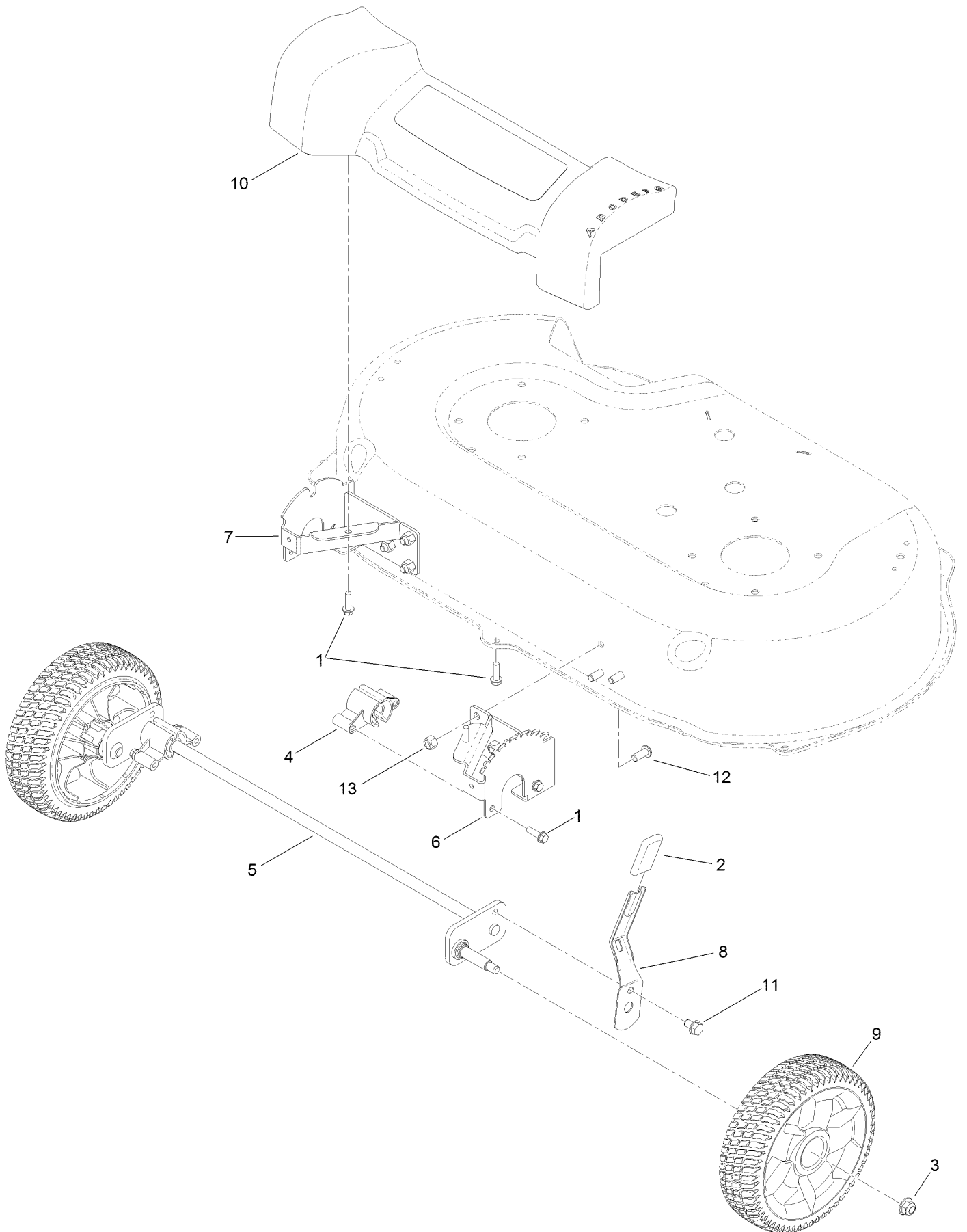
Engine and Pulley Assembly (continued)

| <i>Ref.</i> | <i>Part Number</i> | <i>Qty.</i> | <i>Description</i> | <i>Ref.</i> | <i>Part Number</i> | <i>Qty.</i> | <i>Description</i> |
|-------------|--------------------|-------------|-----------------------------------|-------------|--------------------|-------------|--------------------|
| 1 | | 1 | Engine-Briggs, 121S170127F1 ●■ | 7 | 3290-465 | 1 | Washer-Belleville |
| 2 | 120-3333 | 1 | Pulley-Engine | 8 | 26-0671 | 1 | Screw-HH |
| 3 | 121-5765 | 1 | V-Belt | 9 | 130-2358 | 1 | Decal-Shroud |
| 4 | 120-9470 | 1 | V-Belt, Traction | 11 | 32144-2 | 2 | Screw-Taptite |
| 5 | 120-7077 | 1 | Guide-Belt | 12 | 131-0889-03 | 1 | Guard-Engine |
| 6 | 95-1727 | 3 | Screw-Taptite | 13 | 126-2713 | 2 | Screw-HHF |

● Not serviced separately

■ Obtain parts from www.briggsandstratton.com

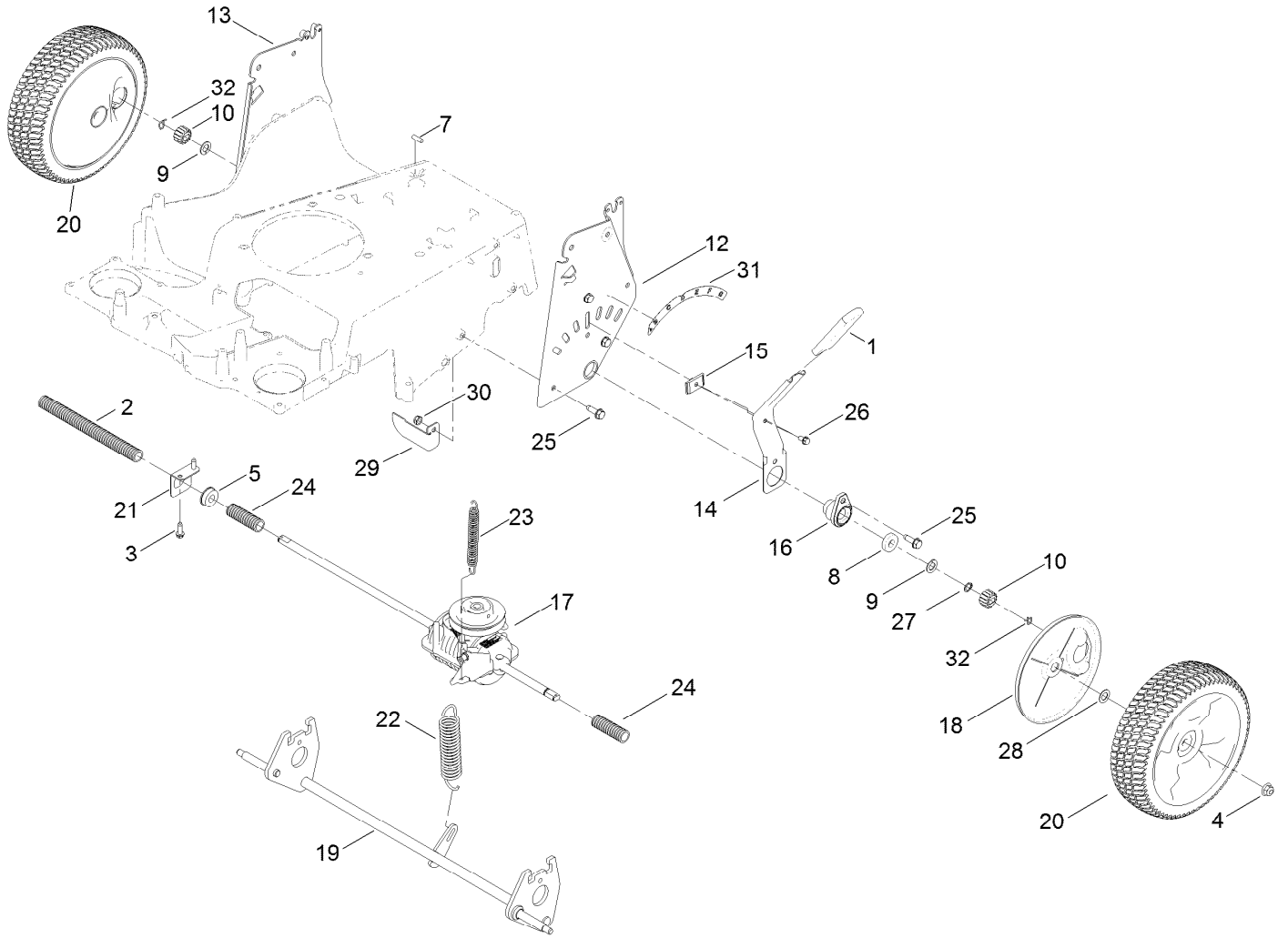
Front Wheel and Axle Assembly



Front Wheel and Axle Assembly (continued)

| <i>Ref.</i> | <i>Part Number</i> | <i>Qty.</i> | <i>Description</i> | <i>Ref.</i> | <i>Part Number</i> | <i>Qty.</i> | <i>Description</i> |
|-------------|--------------------|-------------|----------------------|-------------|--------------------|-------------|--------------------|
| 1 | 46-8091 | 7 | Screw-HWH | 8 | 120-7043 | 1 | Arm-Spring |
| 2 | 120-9535 | 1 | Grip-Lever | 9 | 125-2510 | 2 | 8 Inch Wheel ASM |
| 3 | 104-8301 | 2 | Nut-HF, NI | 10 | 125-5027 | 1 | Front Cover ASM |
| 4 | 125-2495 | 2 | Bushing-Pivot, Front | 11 | 700057 | 1 | Screw-HWH |
| 5 | 125-5061 | 1 | Axle-Front | 12 | 3274-55 | 6 | Screw-HSBH |
| 6 | 120-7037-03 | 1 | Plate-HOC, LH | 13 | 3296-29 | 6 | Nut-Lock, NI |
| 7 | 120-7038-03 | 1 | Plate-HOC, RH | | | | |

Transmission, Rear Wheel and Height-of-Cut Assembly



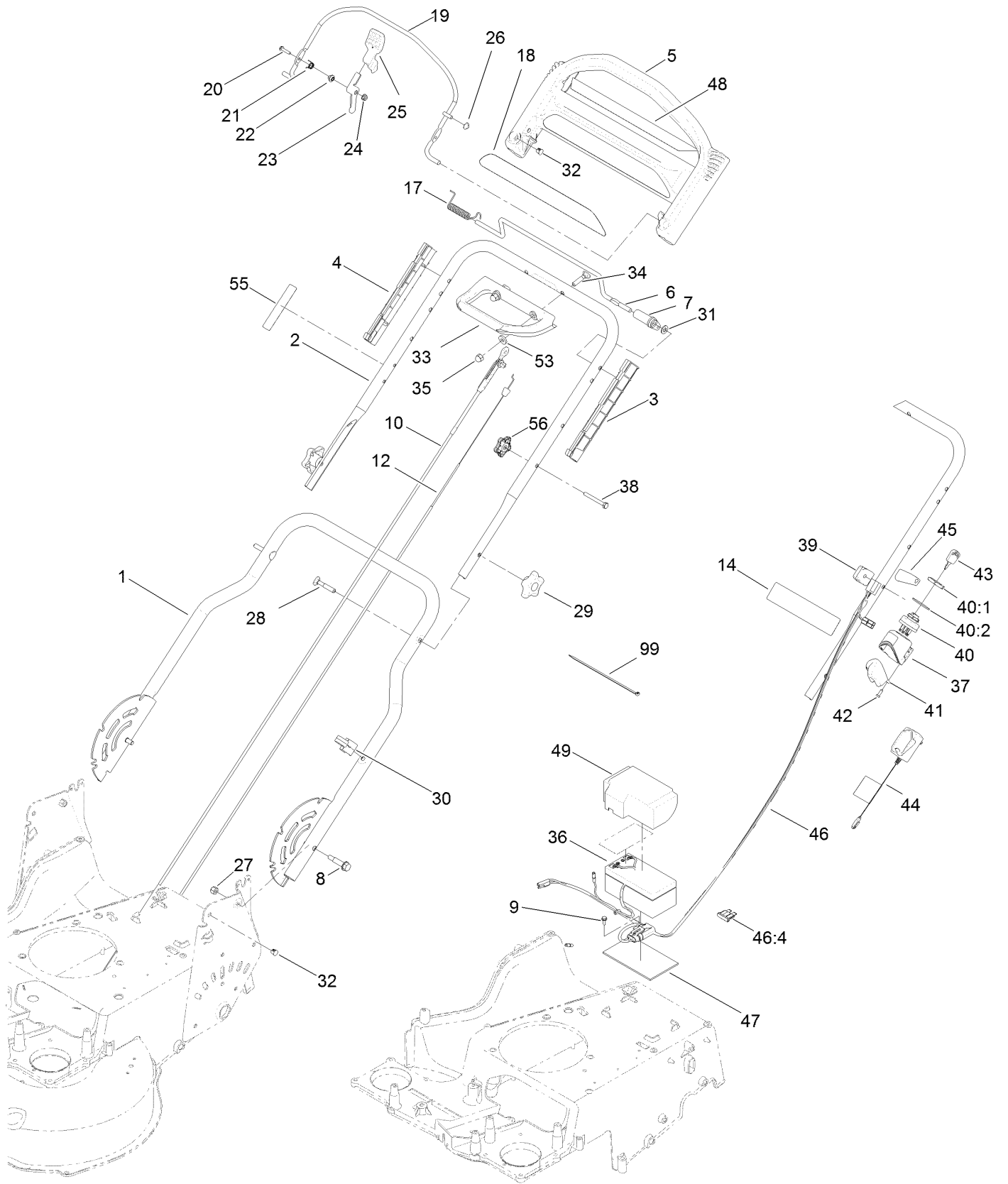
Transmission, Rear Wheel and Height-of-Cut Assembly (continued)

| <i>Ref.</i> | <i>Part Number</i> | <i>Qty.</i> | <i>Description</i> | <i>Ref.</i> | <i>Part Number</i> | <i>Qty.</i> | <i>Description</i> |
|-------------|--------------------|-------------|-----------------------|-------------|--------------------|-------------|---------------------------|
| 1 | 1-633295 | 1 | Grip-Lever, Lift | 17:1:1 | 130-2370 | 1 | Transmission Pulley Kit ● |
| 2 | 121-5799 | 1 | Conduit-Convolute | 18 | 120-6233 | 2 | Cover-Gear |
| 3 | 49-2040 | 2 | Screw-HWHTF | 19 | 131-0815 | 1 | Axle-Rear |
| 4 | 104-8301 | 2 | Nut-HF, NI | 20 | 125-2509 | 2 | 10 Inch Wheel Gear ASM |
| 5 | 104-8699 | 1 | Bearing-Ball | 21 | 120-7008 | 1 | Mount-Bearing |
| 7 | 106-5681 | 1 | Pin-Stop | 22 | 120-7026 | 1 | Spring-Extension |
| 8 | 109-8020 | 2 | Bearing-Ball | 23 | 120-7027 | 1 | Spring-Extension |
| 9 | 110-7191 | 2 | Washer-Thrust | 24 | 121-5800 | 2 | Conduit-Convolute |
| 10 | 110-9417 | 2 | Gear-Pinion, 15T | 25 | 701243 | 8 | Screw-HWHTF |
| 12 | 120-3342-03 | 1 | Plate-HOC, LH | 26 | 32144-4 | 1 | Screw-HWH |
| 13 | 120-3343-03 | 1 | Plate-HOC, RH | 27 | 32151-61 | 1 | Ring-Retaining |
| 14 | 120-5208 | 1 | Arm-Spring, Rear | 28 | 36-4780 | 2 | Washer-Plain |
| 15 | 120-5209 | 1 | Key-Springarm | 29 | 121-5821 | 1 | Bracket-Stop |
| 16 | 120-5210 | 2 | Retainer-Bearing | 30 | 3296-47 | 1 | Nut-Lock, NI |
| 17 | 131-9665 | 1 | Transmission Kit | 31 | 125-2497 | 1 | Decal-HOC, Rear |
| 17:1 | | 1 | Transmission-Mv502 ●■ | 32 | 130-2369 | 2 | Pin-Snap |

● Not illustrated

■ Not serviced separately

Handle Assembly



Handle Assembly (continued)

| <i>Ref.</i> | <i>Part Number</i> | <i>Qty.</i> | <i>Description</i> | <i>Ref.</i> | <i>Part Number</i> | <i>Qty.</i> | <i>Description</i> |
|-------------|--------------------|-------------|-----------------------|-------------|--------------------|-------------|-------------------------|
| 1 | 120-5204-05 | 1 | Handle-Lower | 31 | 130-2343 | 1 | Spacer |
| 2 | 121-5783-05 | 1 | Handle-Upper | 32 | 104-9368 | 3 | Plug-Dome |
| 3 | 105-6842 | 1 | Guide-LH | 33 | 120-7087 | 1 | Handle-Assist, Traction |
| 4 | 105-6841 | 1 | Guide-RH | 34 | 130-2356 | 2 | Screw-Handle, Lock |
| 5 | 104-8678 | 1 | Handle-Control | 35 | 130-2341 | 2 | Nut-Acorn |
| 6 | 99-1588 | 1 | Bar-Control, Traction | 36 | 106-8397 | 1 | Battery-Wet |
| 7 | 127-6842 | 1 | Lever-Traction | 37 | 108-3795 | 1 | Housing-Switch, Key |
| 8 | 120-7025 | 2 | Bolt-Shoulder, HHF | 38 | 321-50 | 1 | Screw-HH |
| 9 | 32144-1 | 1 | Screw-Taptite | 39 | 92-7729 | 1 | Anchor-Cable, Upper |
| 10 | 120-6243 | 1 | Cable-Brake, BBC | 40 | 23-0660 | 1 | Switch-Starter |
| 12 | 127-6867 | 1 | Cable-Traction | 40:1 | 218-461 | 1 | Nut-HH |
| 14 | 104-7953 | 1 | Decal-Warning | 40:2 | 3254-5 | 1 | Washer-Tooth, Internal |
| 17 | 121-9118 | 1 | Spring-Torsion | 41 | 108-3796 | 1 | Cover-Swtch |
| 18 | 117-1019 | 1 | Decal | 42 | 32144-111 | 2 | Screw-PPH |
| 19 | 108-3788-03 | 1 | Bail-Brake | 43 | 700918 | 1 | Key |
| 20 | 106-9169 | 1 | Screw-HWH | 44 | 114-1588 | 1 | Charger-Battery |
| 21 | 107-7462 | 1 | Spring-Torsion | 45 | 108-9751 | 1 | Decal-Switch, Ignition |
| 22 | 107-7463 | 1 | Spacer | 46 | 117-0070 | 1 | Harness-Wire |
| 23 | 106-6802 | 1 | Lever | 46:4 | 99-6124 | 1 | Fuse-40 Amp |
| 24 | 32128-17 | 1 | Nut-Lock, Flange | 47 | 108-0987 | 1 | Foam-Battery |
| 25 | 112-8884 | 1 | Knob | 48 | 121-2399 | 1 | Decal-Assist, Traction |
| 26 | 3290-337 | 1 | Nut-Speed | 49 | 120-3329 | 1 | Cover-Battery |
| 27 | 3296-29 | 2 | Nut-Lock, NI | 53 | 3256-23 | 2 | Washer-Plain |
| 28 | 92-2260 | 2 | Screw-Handle | 55 | 131-0894 | 1 | Decal-Traction, Adjust |
| 29 | 117-5976 | 2 | Knob-Handle | 56 | 131-0897 | 1 | Knob-Handle, Locking |
| 30 | 114-7988 | 1 | Guide-Cable | 99 | 614249 | 2 | Tie-Cable |

Attachments and Accessories

For 20200 TimeMaster 30in Lawn Mower

| Product Name | Model/Part |
|---|-------------------|
| Fuel Stabilizer .05 oz | 130-2393 |
| Engine Maintenance Kit..... | 130-8146 |
| Replacement Blade Kit | 20120P |
| Hi-Lift Repl Blade Kit Timemaster | 20122P |
| Lawn Striping Kit with 30in Roller..... | 20602 |
| Mower Cover | 490-7461 |

Notes:

Notes:

Notes:



Count on it.