



Count on it.

Parts Catalog

Super Recycler®

Lawn Mower

Model No. 20383—Serial No. 313000001 and Up



Ordering Replacement Parts

To order replacement parts, please supply the part number, the quantity, and the description of each part desired.

Understanding Reference Numbers

Each identified part in an illustration has a reference number. The reference number for a part also appears in the parts list, along with other information about the part.

This catalog uses two special reference number formats, one to indicate parts in a service assembly and another to indicate the quantity of a given part in an illustration.

Service Assembly Reference Numbers

Parts in service assemblies have reference numbers in the form a:b. The a represents the reference number of the entire service assembly and the b represents a sequential number unique to each part within the service assembly.

For example, a wheel assembly might be identified by reference number 6, the tire by 6:1, the valve by 6:2, and the wheel by 6:3. When you order the assembly identified by reference number 6, you receive all parts identified by reference numbers 6:1, 6:2, and 6:3. However, you may also order any part individually. Reference numbers of this type appear in illustration and in parts lists.

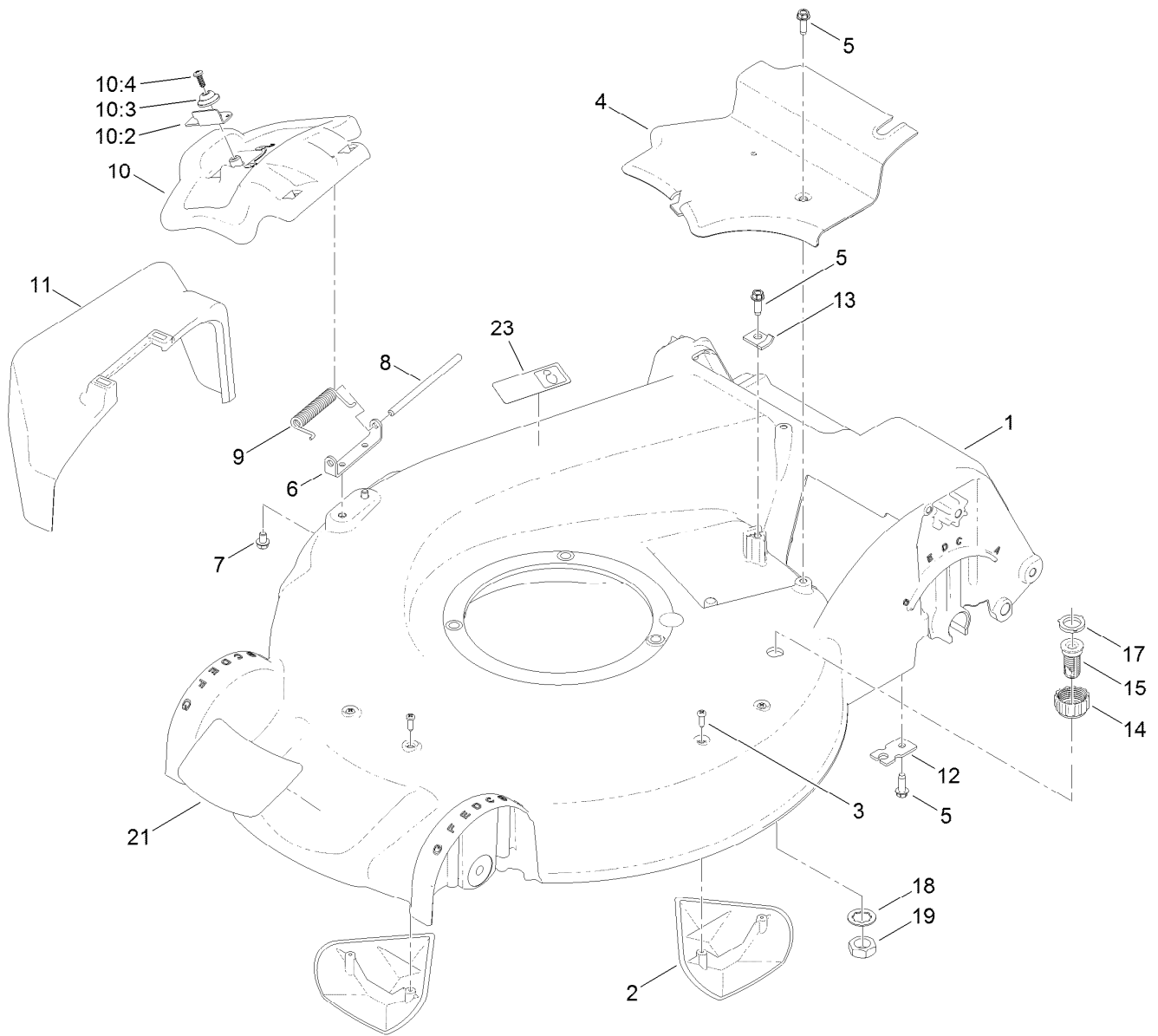
Reference Numbers Indicating Quantity

In an illustration, if a reference number indicates more than one part, the reference number has the form nX y. The n represents the quantity of the part, the X is the multiplication symbol, and the y represents the reference number.

For example, in an illustration, the reference number 2X 37 means that two of the parts identified by reference number 37 are indicated.

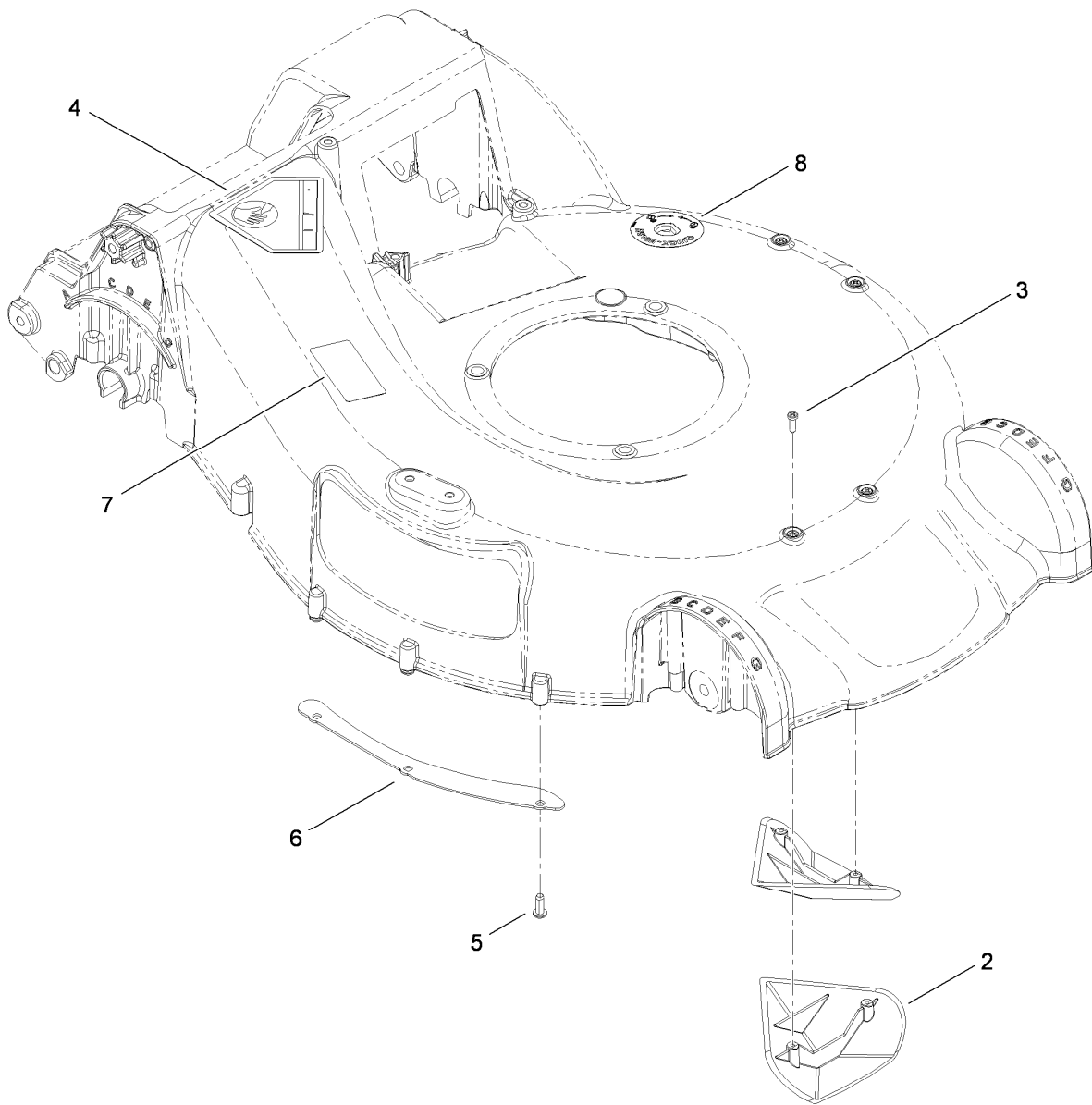
Contents

Housing Assembly	4
Housing Assembly No. 115-2854	5
Rear Door and Mulch Plug Assembly	6
Bag Assembly	7
Engine and Blade Assembly	8
Shroud, Flywheel and Fuel Tank Assembly	9
Dipstick, Brake and Governor Arm Assembly	10
Carburetor, Muffler, Air Cleaner and Valve Cover Assembly	11
Front Wheel and Height-of-Cut Assembly	12
Rear Wheel and Height-of-Cut Assembly	13
Handle Assembly	14
Brake Control Assembly	15
Attachments and Accessories	16



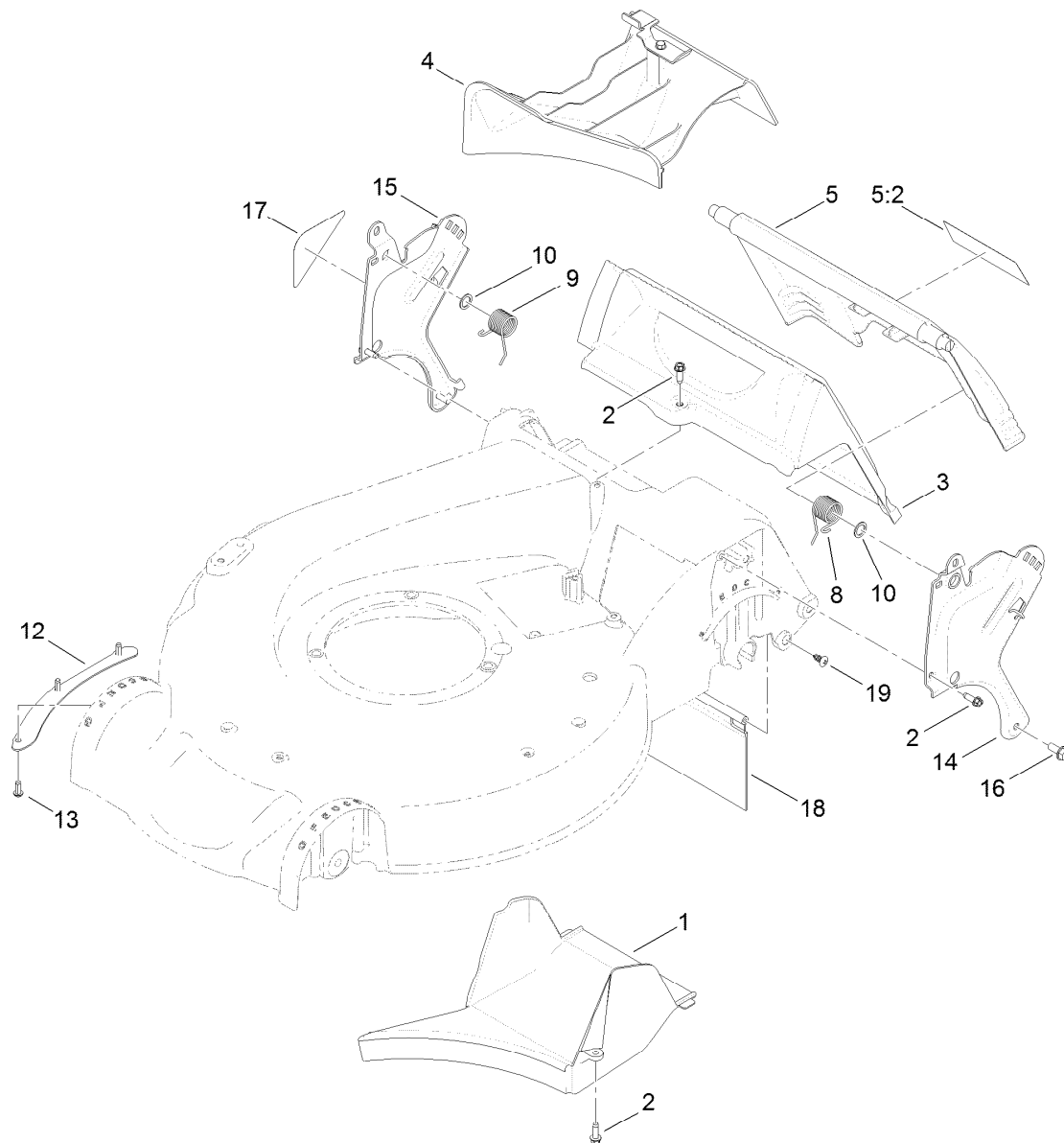
Housing Assembly

Ref.	Part Number	Qty.	Description	Ref.	Part Number	Qty.	Description
1	115-2854	1	Housing ASM	10:4	107-7461	1	Screw-Plastite
2	108-3798	2	Kicker-Housing	11	108-3753	1	Chute-Discharge, Side
3	32144-111	4	Screw-PPH	12	107-7497	1	Bracket-Cable, Traction
4	107-7494	1	Cover-Belt	13	62-3720	1	Clamp-Cable
5	49-2040	3	Screw-HWHTF	14	112-6401	1	Coupling-Hose, Washout Port
6	112-6416	1	Bracket-Cover	15	112-6400	1	Port-Washout
7	99-8445	2	Screw-HWH	17	112-6438	1	Washer-Seal, Washout Port
8	99-5291	1	Rod-Cover	18	3254-5	1	Washer-Tooth, Internal
9	99-5293	1	Spring-Torsion	19	3218-6	1	Nut-Jam
10	107-3717	1	Discharge Door ASM	21	121-5758	1	Decal-Deck
10:2	107-0795	1	Latch-Door	23	125-5092	1	Decal-Placement, Foot
10:3	107-7456	1	Cap-Door				



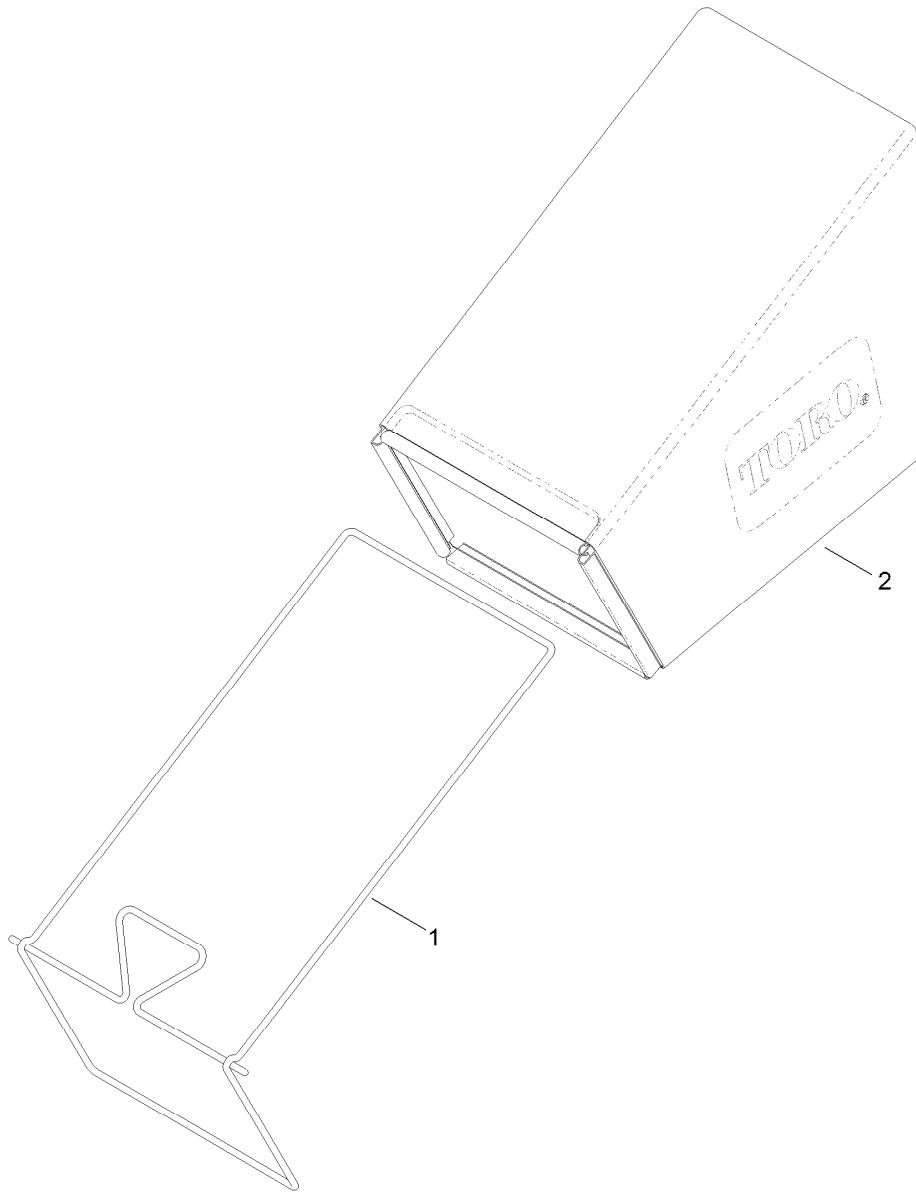
Housing Assembly No. 115-2854

<i>Ref.</i>	<i>Part Number</i>	<i>Qty.</i>	<i>Description</i>
2	108-3798	2	Kicker-Housing
3	32144-111	4	Screw-PPH
4	94-8072	1	Decal-Danger
5	63-8590	3	Screw
6	105-1316-03	1	Sheet-Lip
7	125-5092	1	Decal-Placement, Foot
8	112-8867	1	Decal-Port, Washout



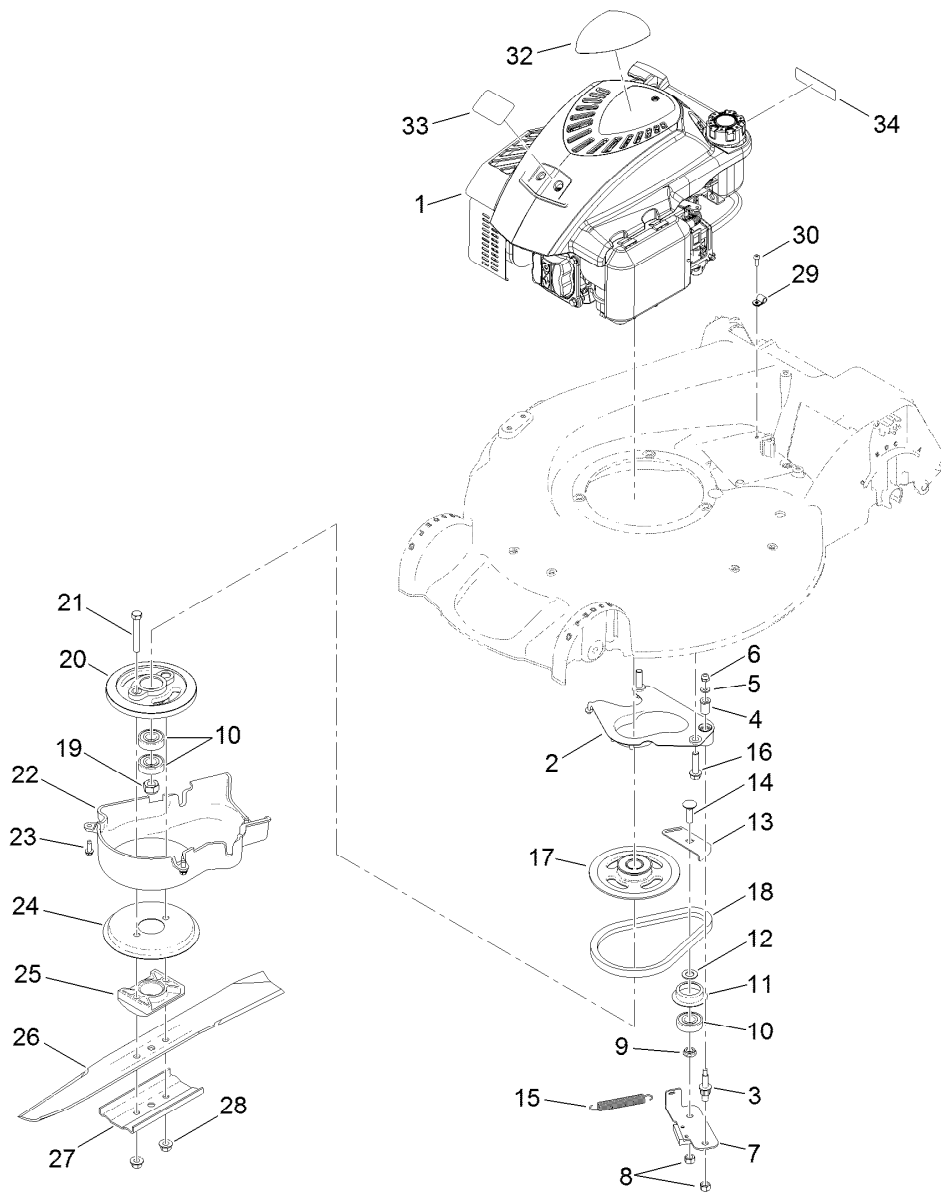
Rear Door and Mulch Plug Assembly

<i>Ref.</i>	<i>Part Number</i>	<i>Qty.</i>	<i>Description</i>	<i>Ref.</i>	<i>Part Number</i>	<i>Qty.</i>	<i>Description</i>
1	107-7495	1	Tunnel-Discharge	12	105-1316-03	1	Sheet-Lip
2	49-2040	5	Screw-HWHTF	13	63-8590	3	Screw
3	114-2668	1	Chute	14	114-2671-03	1	Bracket-Handle, LH
4	115-8413	1	Mulch Plug ASM	15	114-2672-03	1	Bracket-Handle, RH
5	121-5776	1	Rear Door ASM	16	32144-11	2	Screw-HWHTF
5:2	114-7982	1	Decal-Warning	17	115-2884	1	Decal-Instruction
8	115-2859	1	Spring-Torsion	18	120-7011	1	Shield-Trailing
9	114-7924	1	Spring-Torsion	19	117-1092	2	Screw-PTH
10	94-8196	2	Washer-Nylon				



Bag Assembly

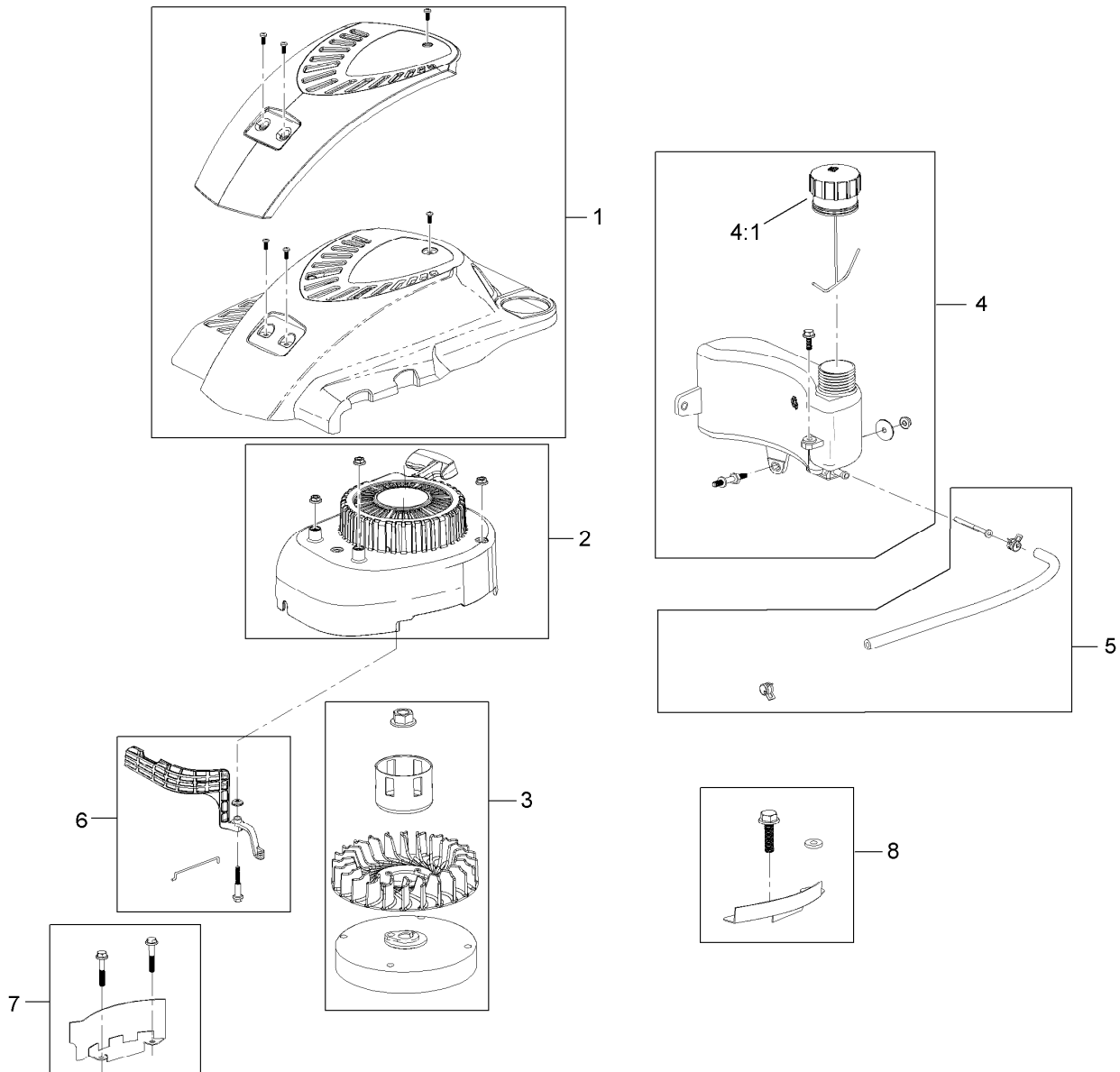
<i>Ref.</i>	<i>Part Number</i>	<i>Qty.</i>	<i>Description</i>
1	121-2333-03	1	Frame-Bag
2	114-2664	1	Grass Bag ASM



Engine and Blade Assembly

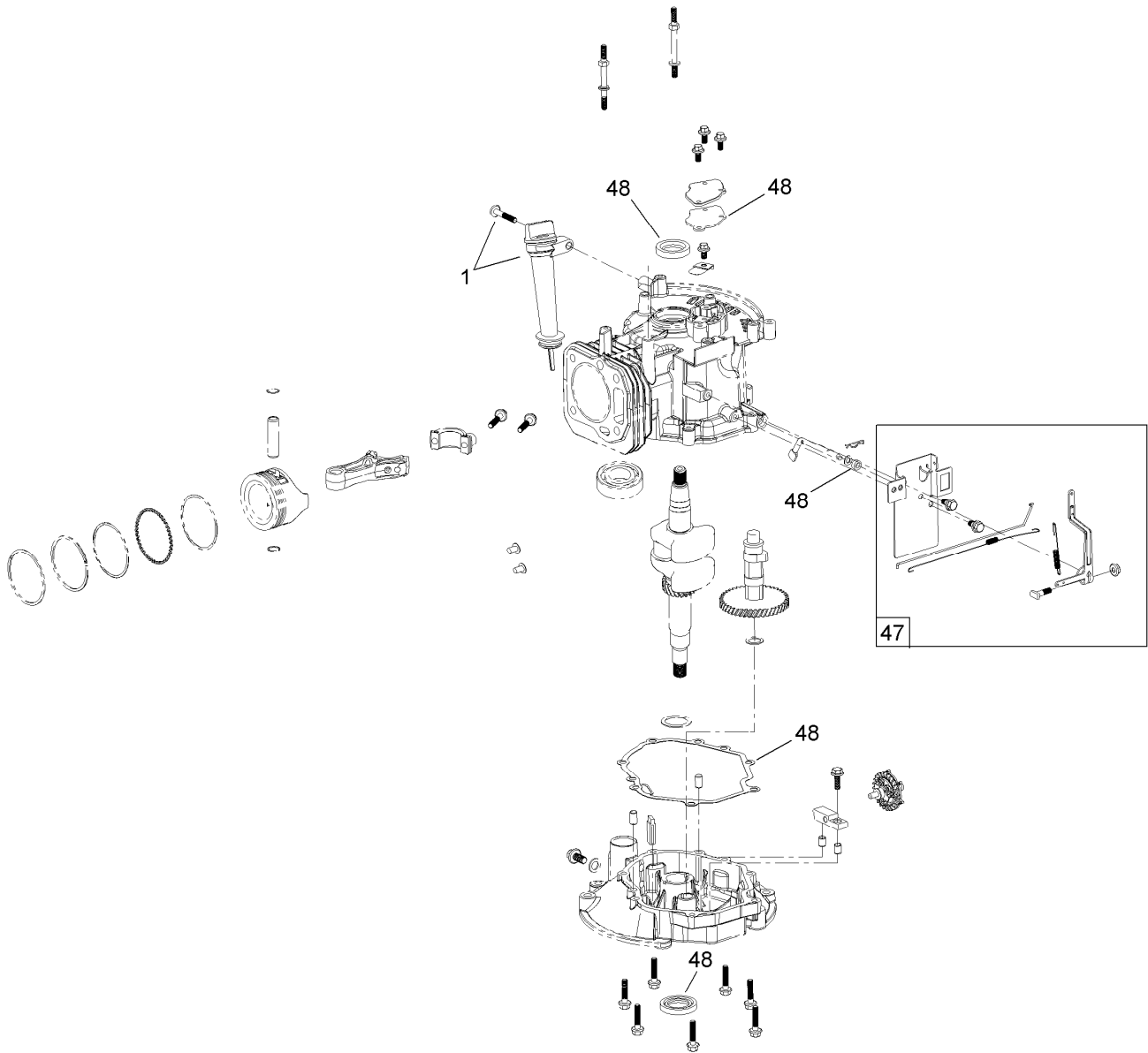
Ref.	Part Number	Qty.	Description
1	120-4412	1	Engine-1P65Fc
2	107-0761	1	Plate-Anchor
3	107-0759	1	Bolt-Shoulder
4	107-0797	1	Bushing
5	3256-16	1	Washer-Flat
6	3296-73	1	Nut-Lock, NI
7	120-3327	1	Brake Arm ASM
8	603773	2	Nut
9	107-0758	1	Spacer-Bearing
10	100-1048	3	Bearing-Ball
11	108-3790	1	Retainer-Belt
12	605256	1	Washer-Plain
13	107-7471	1	Plate-Guide
14	3231-25	1	Bolt-CARR
15	108-3792	1	Spring-Tension, Brake
16	32144-102	3	Screw-HWH
17	117-5970	1	Pulley

Ref.	Part Number	Qty.	Description
18	110-1790	1	Belt
19	108-9342	1	Nut-Hex
20	107-0754	1	Drum
21	3211-42	2	Screw-HH
22	107-7488	1	Cover
23	49-2040	3	Screw-HWHTF
24	108-3787	1	Disc
25	107-7487	1	Support-Blade
26	108-3762-03	1	Blade-Recycling
27	108-3766-03	1	Support-Blade
28	54-9190	2	Nut-Lock
29	98-2256	1	Clamp
30	32144-32	1	Screw
32	125-5036	1	Decal-Shroud
33	121-2396	1	Decal
34	117-2718	1	Decal-Arrester, Spark



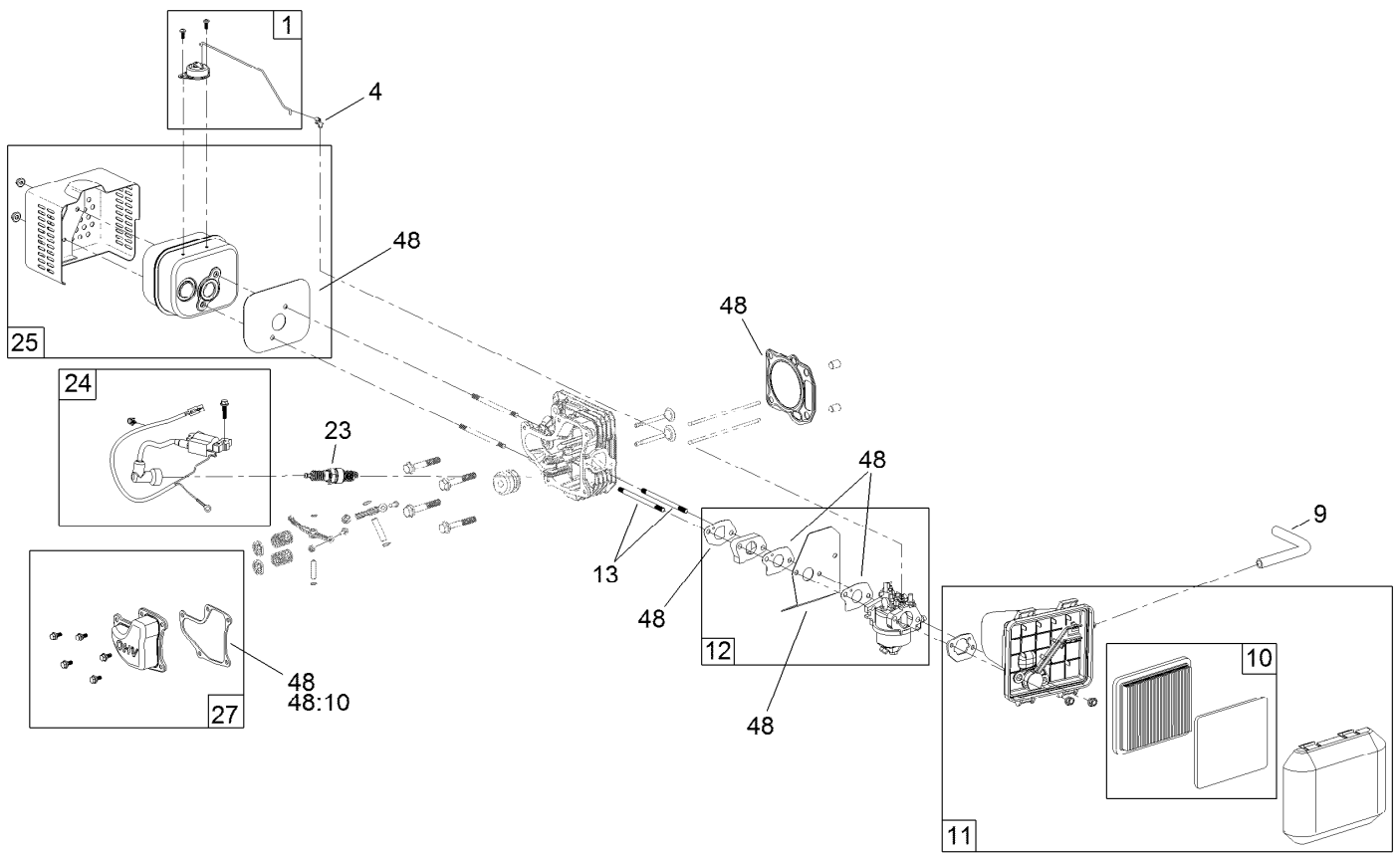
Shroud, Flywheel and Fuel Tank Assembly

Ref.	Part Number	Qty.	Description
1	119-1990	1	Shroud ASM
2	121-4160	1	Recoil And Blower Shroud Kit
3	121-0388	1	Flywheel And Fan Kit
4	121-4162	1	Fuel Tank Kit
4:1	121-4163	1	Cap-Fuel
5	121-4167	1	Fuel Line Kit
6	121-4168	1	Air Vane Kit
7	119-1994	1	Flywheel Shield Kit
8	121-4207	1	Flywheel Guard Kit, BBC



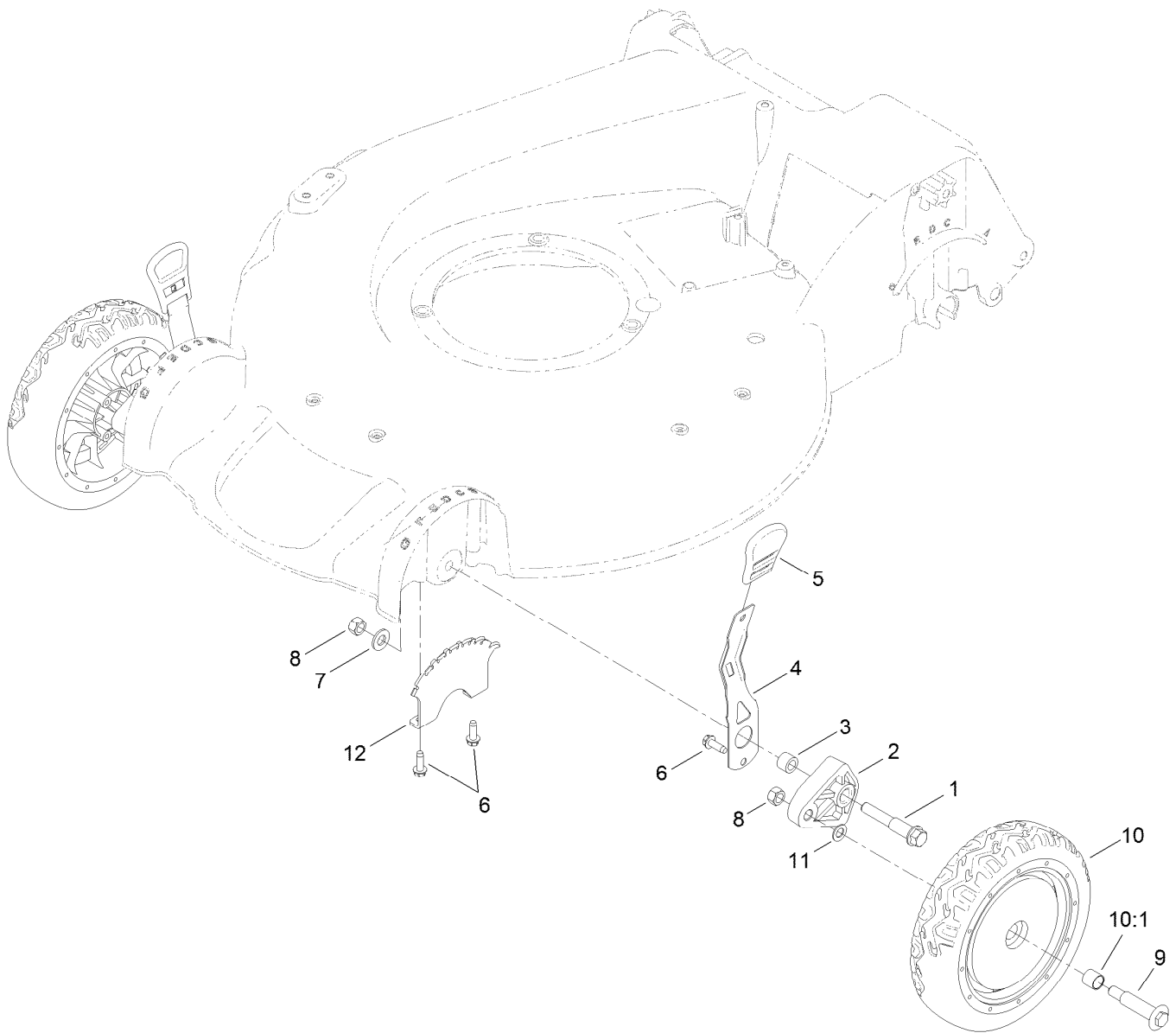
Dipstick, Brake and Governor Arm Assembly

<i>Ref.</i>	<i>Part Number</i>	<i>Qty.</i>	<i>Description</i>
1	119-1903	1	Dipstick And Fill Tube Kit
47	119-1968	1	Governor Arm Kit
48	127-9144	1	Seal And Gasket Kit



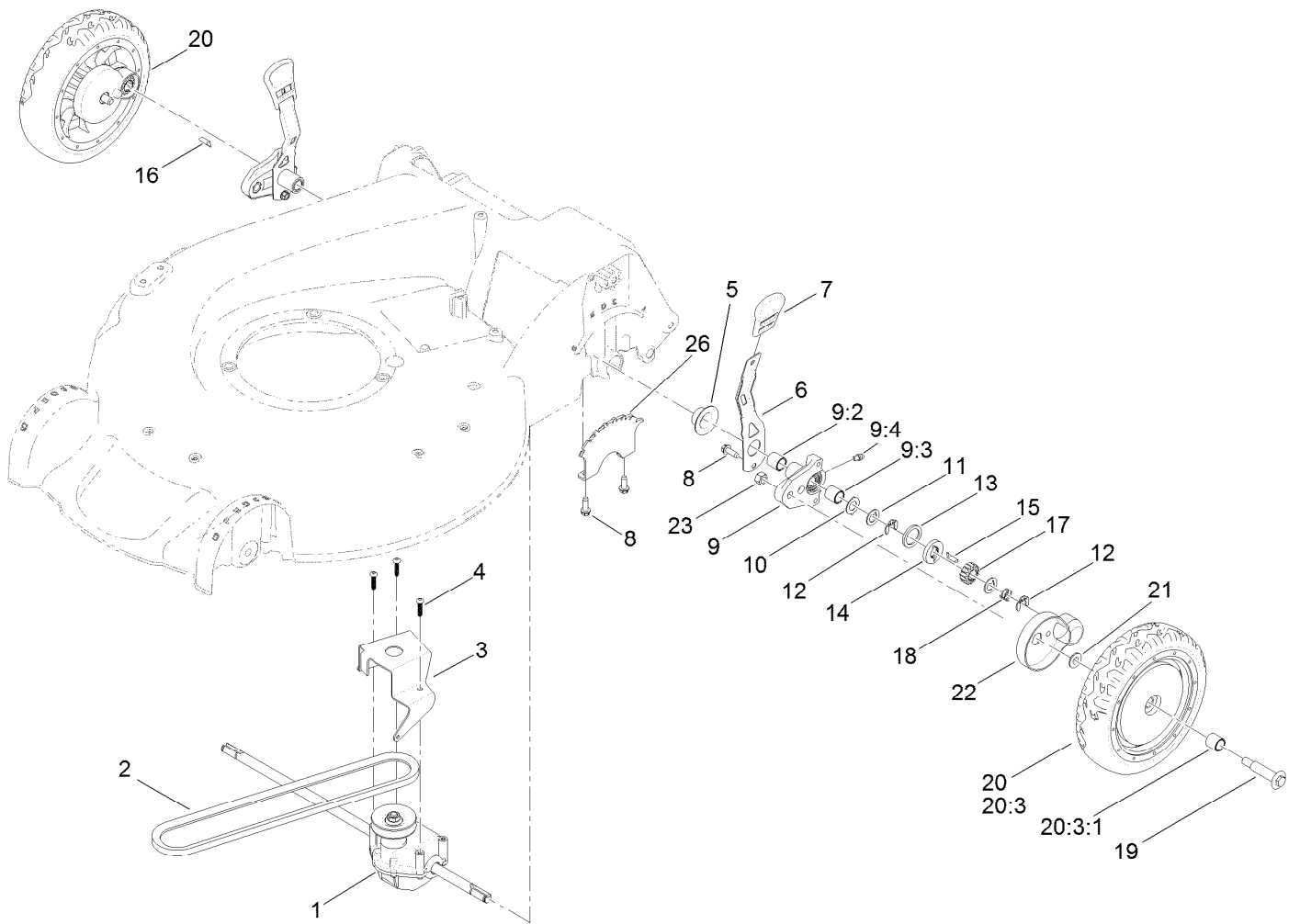
Carburetor, Muffler, Air Cleaner and Valve Cover Assembly

Ref.	Part Number	Qty.	Description
1	121-4175	1	Thermal Control Kit
4	120-4451	1	Lock-Throttle
9	119-1902	1	Tube-Breather
10	119-1909	1	Air Filter And Prefilter Kit
11	121-4177	1	Air Cleaner ASM Kit
12	120-4405	1	Carburetor Repair Kit
12	121-4181	1	Carburetor Complete Kit
13	121-0367	2	Stud-Intake
23	121-4199	1	Spark Plug
24	121-4209	1	Ignition Coil Kit, BBC
25	119-1969	1	Muffler And Shield Kit
27	121-4188	1	Valve Cover Kit
48	127-9144	1	Seal And Gasket Kit
48:10	121-4190	1	Gasket-Valve Cover



Front Wheel and Height-of-Cut Assembly

Ref.	Part Number	Qty.	Description
1	114-3467	2	Screw-Shoulder
2	107-7492	2	Arm-Pivot
3	52-2480	2	Spacer-Wheel
4	107-7491	2	Arm-Spring
5	110-0549	2	Knob-HOC
6	49-2040	6	Screw-HWHTF
7	3256-24	2	Washer-Flat
8	603773	4	Nut
9	92-1057	2	Bolt-Shoulder
10	107-3708	2	Wheel ASM
10:1	27-6250	2	Bushing
11	40-1940	2	Washer
12	107-7478	2	Plate-HOC

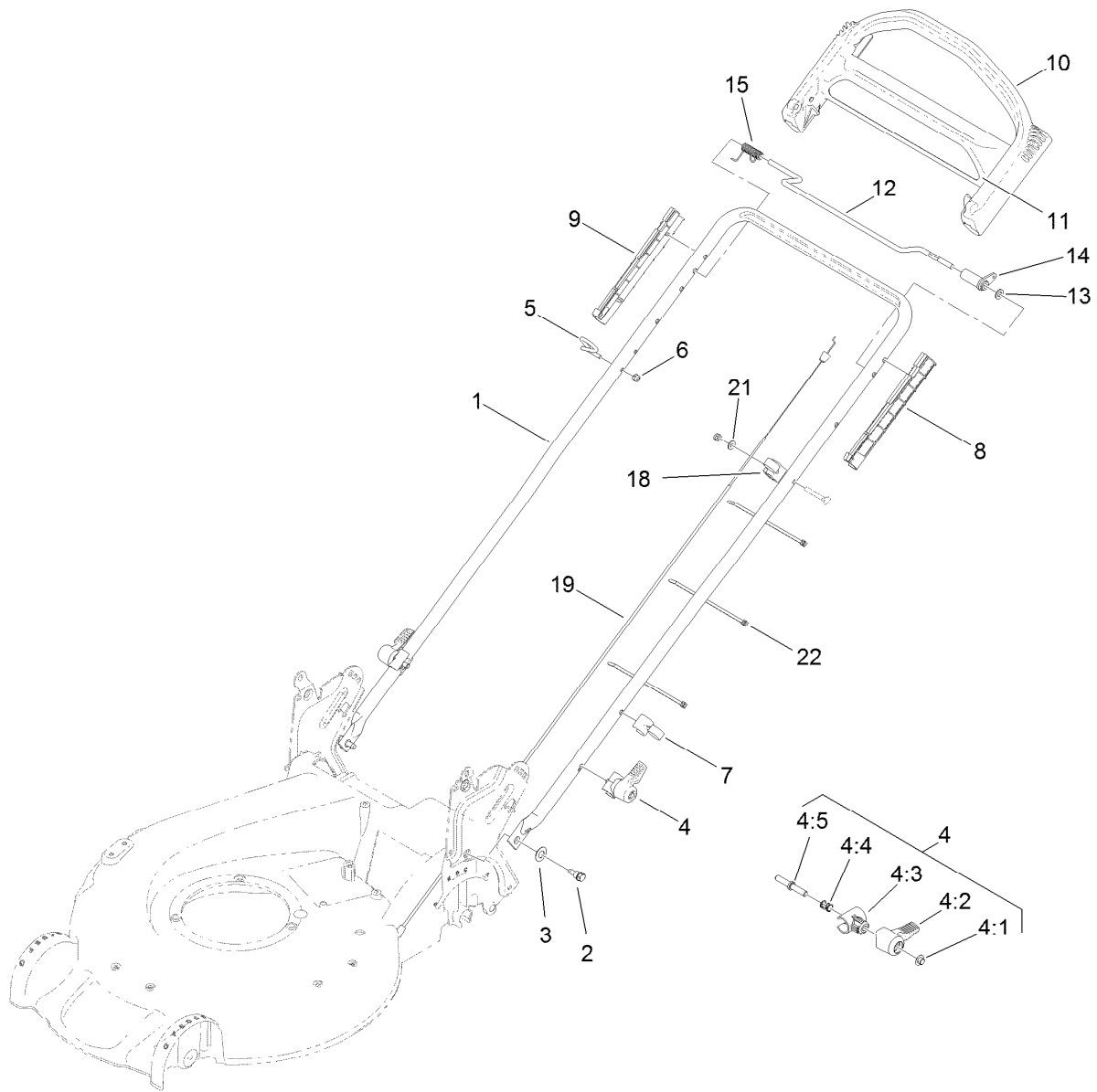


Rear Wheel and Height-of-Cut Assembly

Ref.	Part Number	Qty.	Description
1	121-9184	1	Transmission ASM
2	92-1043	1	V-Belt
3	114-7977-03	1	Bracket-Transmission
4	108-7476	3	Screw-Plastite
5	42-3520	2	Cap-End
6	107-7491	2	Arm-Spring
7	110-0549	2	Knob-HOC
8	49-2040	6	Screw-HWHTF
9	100-8774	2	Pivot Arm ASM
9:2	47-2900	1	Bushing
9:3	70-9760	1	Bushing
9:4	302-56	1	Fitting-Grease
10	65-4730	2	Washer-Arm, Pivot
11	65-4740	4	Washer-Thrust, Keyed
12	65-2720	4	Ring-Clip, Locking

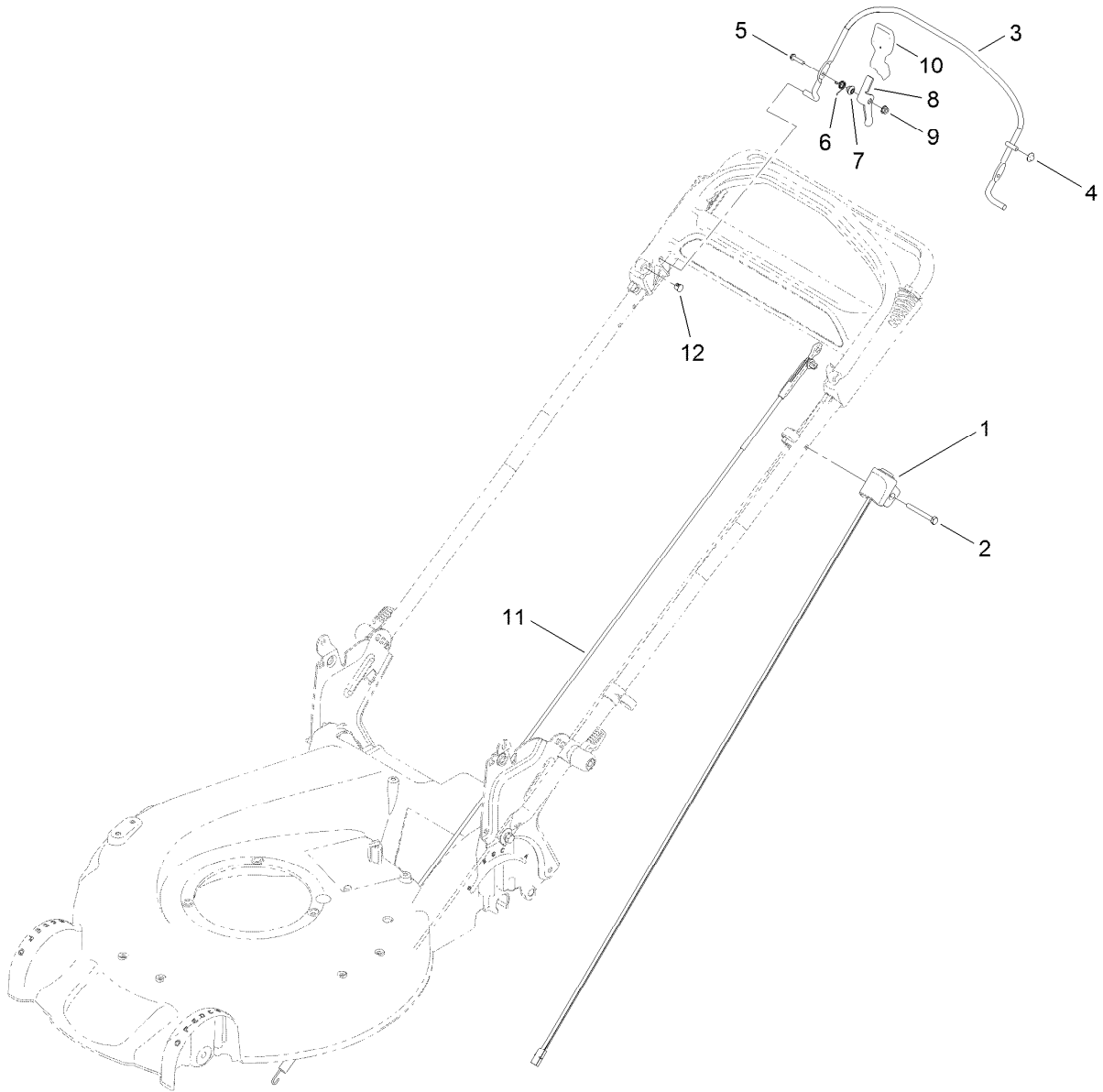
Ref.	Part Number	Qty.	Description
13	65-4710	2	Ring-Friction
14	65-4760	2	Washer-Clutch
15	66-6050	1	Key-Rocking, LH
16	66-6040	1	Key-Rocking, RH
17	65-4750	2	Gear-Pinion
18	65-4720	2	Spring-Compression
19	92-1057	2	Bolt-Shoulder
20	107-3709	2	Wheel Gear ASM
20:3		1	Wheel ASM ●
20:3:1	27-6250	2	Bushing
21	74-1671	2	Spacer-Cover, Wheel
22	74-1660	2	Cover-Wheel
23	603773	2	Nut
26	107-7478	2	Plate-HOC

● Not serviced separately



Handle Assembly

<i>Ref.</i>	<i>Part Number</i>	<i>Qty.</i>	<i>Description</i>	<i>Ref.</i>	<i>Part Number</i>	<i>Qty.</i>	<i>Description</i>
1	121-9167-05	1	Handle	8	105-6842	1	Guide-LH
2	115-1958	2	Bolt-Shoulder	9	105-6841	1	Guide-RH
3	112-9972	2	Washer-Spring, Conical	10	104-8678	1	Handle-Control
4	115-2860	2	Quick Release ASM	11	117-1019	1	Decal
4:1	109-0917	1	Nut-Push	12	99-1588	1	Bar-Control, Traction
4:2	114-7995	1	Lever	13	3256-23	1	Washer-Plain
4:3	114-7996	1	Anchor-Spring	14	99-1589	1	Lever-Traction
4:4	115-2858	1	Spring-Compression	15	121-9118	1	Spring-Torsion
4:5	114-2675	1	Rod-Release	18	99-5239	1	Anchor-Cable
5	86-9671	1	Guide-Rope	19	108-8158	1	Cable-Traction
6	3296-73	2	Nut-Lock, NI	21	3256-1	1	Washer-Flat
7	114-7988	1	Guide-Cable	22	614249	3	Tie-Cable



Brake Control Assembly

<i>Ref.</i>	<i>Part Number</i>	<i>Qty.</i>	<i>Description</i>
1	121-2347	1	Harness
2	321-50	1	Screw-HH
3	108-3788-03	1	Bail-Brake
4	3290-337	1	Nut-Speed
5	106-9169	1	Screw-HWH
6	107-7462	1	Spring-Torsion
7	107-7463	1	Spacer
8	106-6802	1	Lever
9	32128-17	1	Nut-Lock, Flange
10	112-8884	1	Knob
11	108-8155	1	Cable ASM
12	104-9368	1	Plug-Dome

Attachments and Accessories

For 20383 Super Recycler Lawn Mower

Product Name	Model/Part
Bagging Blade	108-3759-03
Traction Assist Handle Kit.....	108-8120
Engine Maintenance Kit.....	20240
Lawnmower Cover.....	490-7462

Notes:

Notes:

Notes:



Count on it.