



HD Shock and Spring Kit

TimeCutter® HD Riding Mower

Model No. 137-2042

Installation Instructions

▲ WARNING

CALIFORNIA Proposition 65 Warning

This product contains a chemical or chemicals known to the State of California to cause cancer, birth defects, or reproductive harm.

Installation

Preparing the Machine

1. Park the machine on a level surface.
2. Disengage the blade-control switch.
3. Engage the parking brake.
4. Move the motion-control levers outward to the NEUTRAL-LOCK position.
5. Shut off the engine and remove the key.

Removing the Existing Rear Springs

1. Remove the cam locknut (1/2 inch) securing the top of the existing rear spring ([Figure 1](#)). Retain the cam locknut (1/2 inch).
2. Remove the flange nut (3/8 inch) securing the bottom of the existing rear spring ([Figure 1](#)). Retain the flange nut (3/8 inch).
3. Remove the existing rear spring ([Figure 1](#)).
4. Repeat this procedure on the other side.

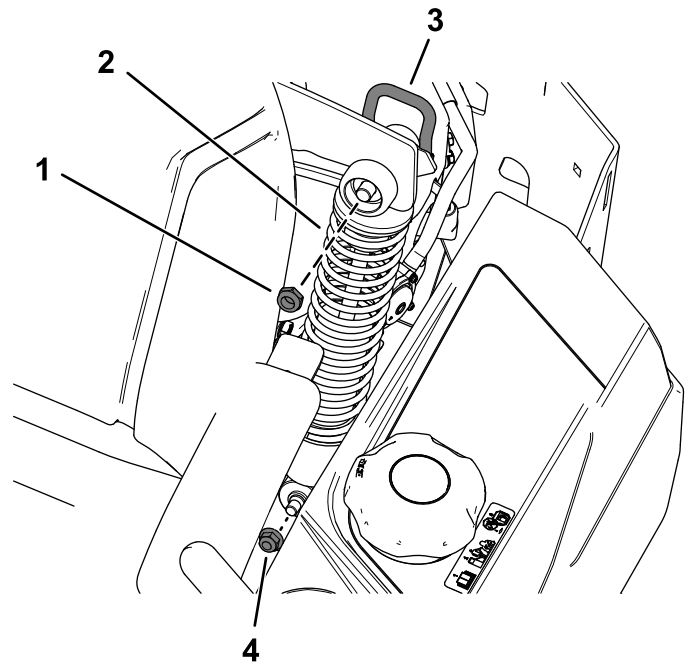


Figure 1

- | | |
|---------------------------|--|
| 1. Cam locknut (1/2 inch) | 3. Cam-lock lever in the locked position |
| 2. Rear spring | 4. Flange nut (3/8 inch) |

g209520

Installing the New Rear Heavy-Duty Springs

1. Install the new rear spring using the previously removed cam locknut (1/2 inch) and flange nut (3/8 inch) as shown in [Figure 1](#).
2. With the cam-lock lever in the locked position, torque the cam locknut (1/2 inch) to 15 to 16 N·m (135 to 145 in-lb).
3. Repeat this procedure on the other side.



Removing the Existing Front Spring

1. Remove the 2 wheel bolts and 2 flange nuts (3/8 inch) securing the existing front spring ([Figure 2](#)).

Retain the 2 wheel bolts and 2 flange nuts (3/8 inch).

2. Remove the existing front spring ([Figure 2](#)).

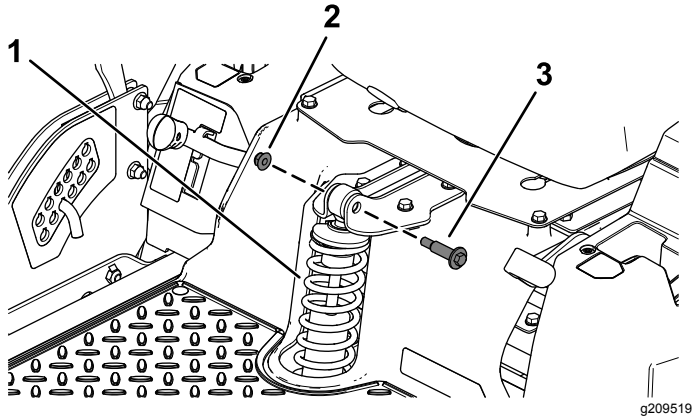


Figure 2

Top of the front spring shown

- | | |
|--------------------------|---------------|
| 1. Front spring | 3. Wheel bolt |
| 2. Flange nut (3/8 inch) | |

Installing the New Front Heavy-Duty Spring

Install the new front spring using the previously removed 2 wheel bolts and 2 flange nuts (3/8 inch) as shown in [Figure 2](#).