



**Count on it.**

**Parts Catalog**

**30in TurfMaster  
Walk-Behind Lawn Mower**

Model No. 22200—Serial No. 313000001 and Up



# Ordering Replacement Parts

To order replacement parts, please supply the part number, the quantity, and the description of each part desired.

## Understanding Reference Numbers

Each identified part in an illustration has a reference number. The reference number for a part also appears in the parts list, along with other information about the part.

This catalog uses two special reference number formats, one to indicate parts in a service assembly and another to indicate the quantity of a given part in an illustration.

## Service Assembly Reference Numbers

Parts in service assemblies have reference numbers in the form a:b. The a represents the reference number of the entire service assembly and the b represents a sequential number unique to each part within the service assembly.

For example, a wheel assembly might be identified by reference number 6, the tire by 6:1, the valve by 6:2, and the wheel by 6:3. When you order the assembly identified by reference number 6, you receive all parts identified by reference numbers 6:1, 6:2, and 6:3. However, you may also order any part individually. Reference numbers of this type appear in illustration and in parts lists.

## Reference Numbers Indicating Quantity

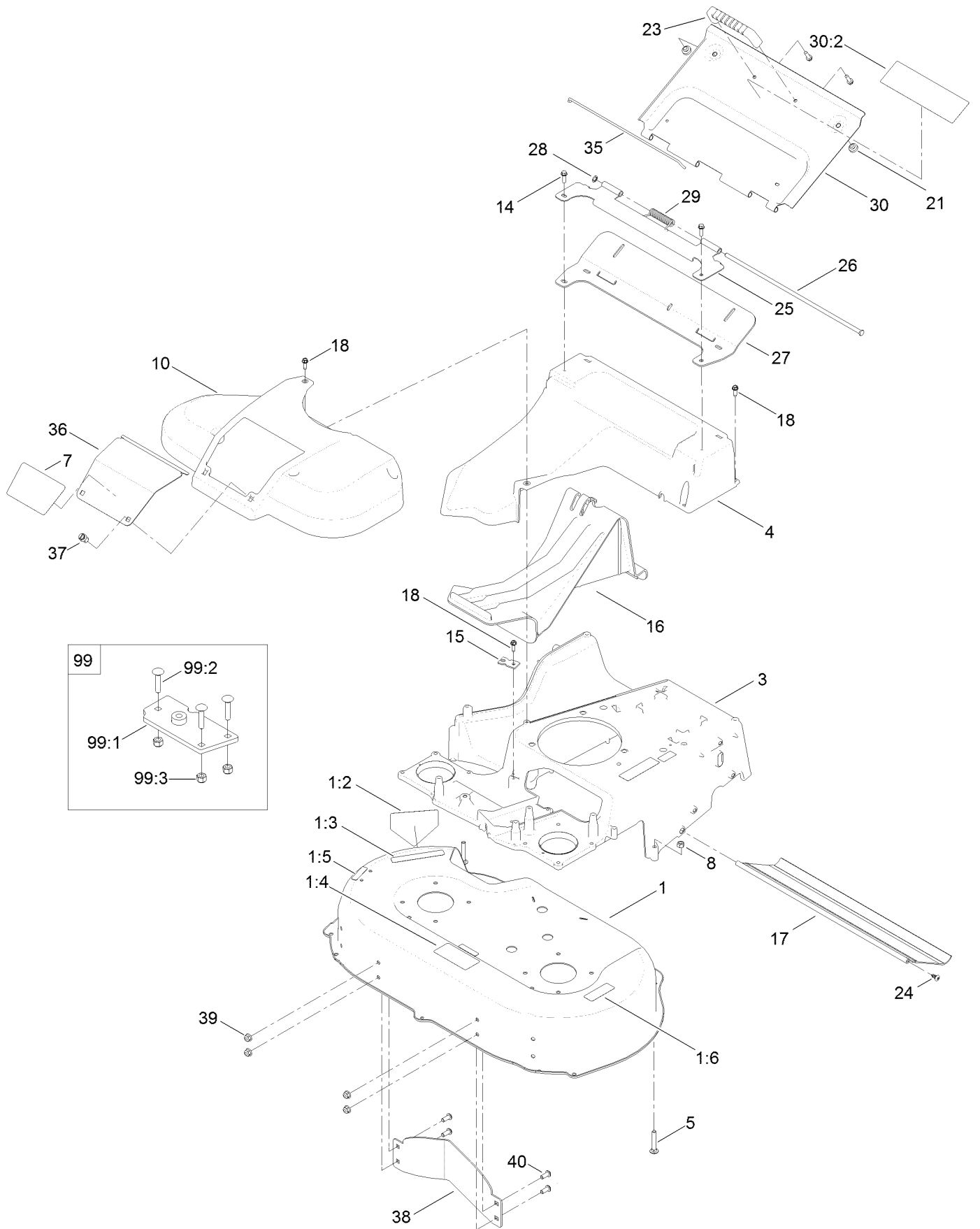
In an illustration, if a reference number indicates more than one part, the reference number has the form nX y. The n represents the quantity of the part, the X is the multiplication symbol, and the y represents the reference number.

For example, in an illustration, the reference number 2X 37 means that two of the parts identified by reference number 37 are indicated.

# Contents

Deck, Frame and Chute Assembly .....	4
Spindle and Blade Assembly .....	6
Engine and Fuel Tank Assembly .....	8
Side Discharge Chute Assembly .....	10
Grass Bag Assembly .....	11
Front Bumper and Wheel Assembly .....	12
Traction and Height-of-Cut Assembly .....	13
Handle Assembly .....	14
Attachments and Accessories .....	15

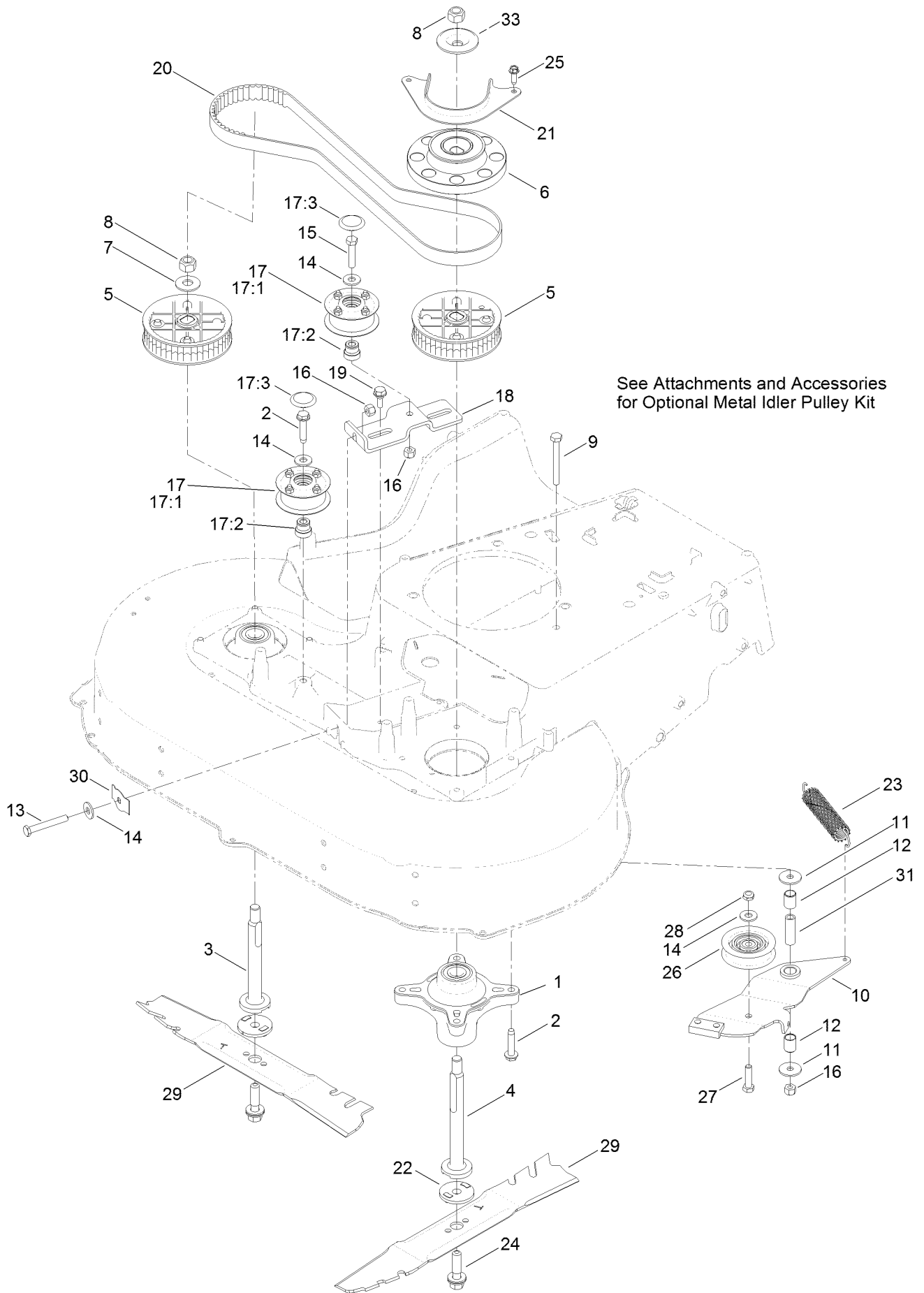
# Deck, Frame and Chute Assembly



## Deck, Frame and Chute Assembly (continued)

<i>Ref.</i>	<i>Part Number</i>	<i>Qty.</i>	<i>Description</i>	<i>Ref.</i>	<i>Part Number</i>	<i>Qty.</i>	<i>Description</i>
1	125-2481	1	Deck ASM	24	117-1092	2	Screw-PTH
1:2	94-8072	1	Decal-Danger	25	116-6351-03	1	Bracket-Hinge
1:3	93-7009	1	Decal-Danger	26	116-6933	1	Pin-Hinge
1:4	116-8528	1	Decal	27	116-6229	1	Seal-Door
1:5	120-9570	2	Decal-Warning	28	32151-72	1	Ring-Retaining
1:6	121-1449	1	Decal-Warning, Block	29	116-7573	1	Spring-Torsion, Cover
3	121-5807-01	1	Frame	30	116-8355	1	Rear Door ASM
4	120-3336	1	Chute	30:2	116-7583	1	Decal-Warning
5	3230-5	2	Screw-CARR	35	116-6966	1	Clip-Seal
7	121-9191	1	Decal	36	121-5793-03	1	Door-Access
8	3296-29	2	Nut-Lock, NI	37	121-5840	2	Fastener
10	121-5810	1	Cover-Belt	38	116-5588-01	1	Baffle-Flow, Control
14	46-8091	4	Screw-HWH	39	104-8300	4	Nut-Flange, NI
15	107-7497	1	Bracket-Cable, Traction	40	3274-55	4	Screw-HSBH
16	120-5225	1	Plug-Mulch	99	125-5072	1	Frame Plate Kit (Service)
17	121-5841	1	Shield-Trailing	99:1	125-2542	1	Plate Frame ASM
18	49-2040	9	Screw-HWHTF	99:2	3229-3	3	Screw-CARR
21	1-513658	2	Bumper	99:3	3296-42	3	Nut-Lock, NI
23	65-5100	1	Handle-Door				

# Spindle and Blade Assembly

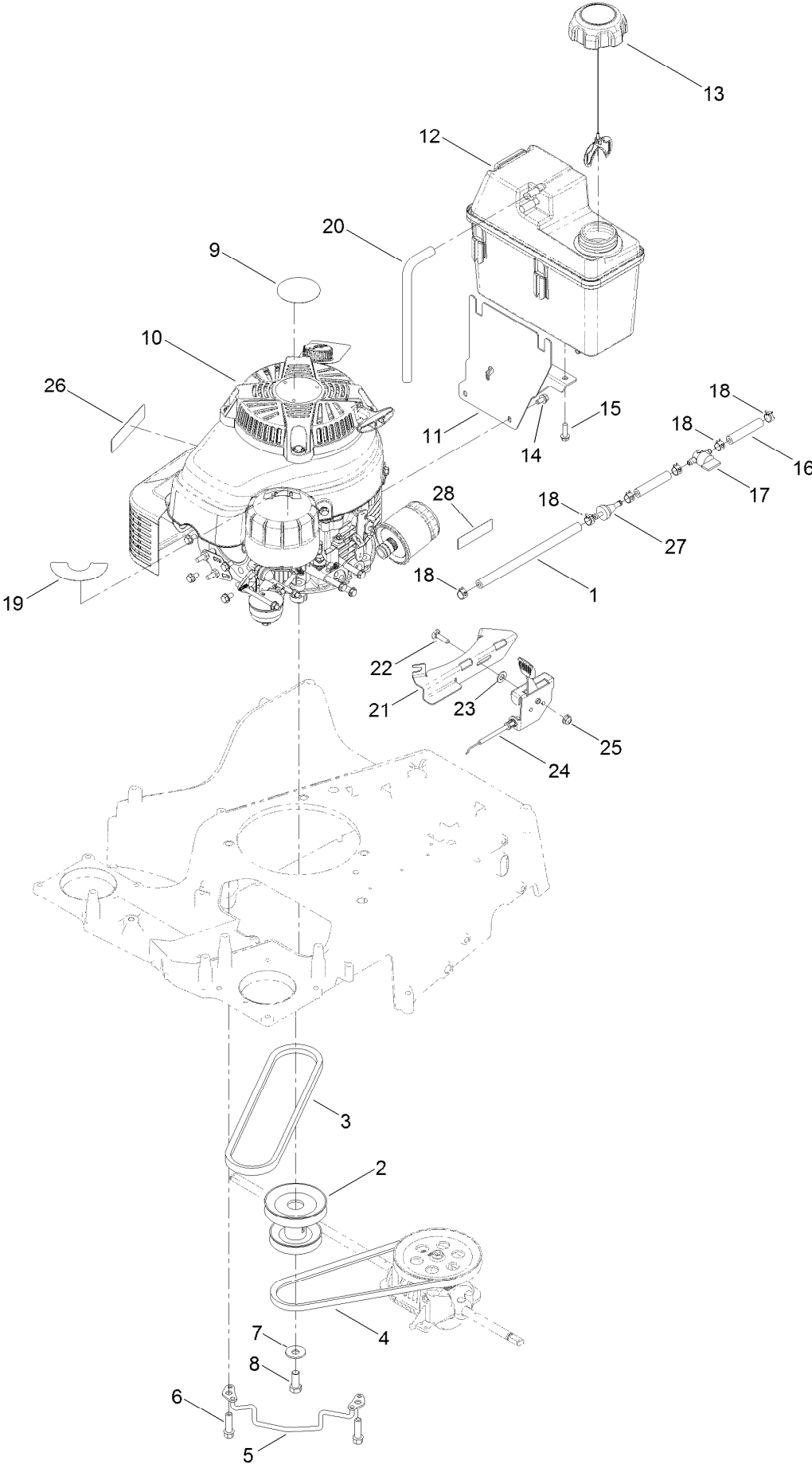


## Spindle and Blade Assembly (continued)

<i>Ref.</i>	<i>Part Number</i>	<i>Qty.</i>	<i>Description</i>	<i>Ref.</i>	<i>Part Number</i>	<i>Qty.</i>	<i>Description</i>
1	120-6234	2	Spindle ASM	17:2	131-4504	2	Adapter-Bore
2	32144-57	9	Screw	17:3	125-2533	2	Plug-Cap
3	120-5234	1	Shaft-Spindle	18	120-3348	1	Bracket-Idler
4	120-5235	1	Shaft-Spindle	19	120-7024	2	Screw-Shoulder, HHF
5	121-9100	2	Sprocket	20	120-3335	1	Belt-Synchronous
6	120-3334	1	Pulley-Brake, Spindle	21	120-5245-03	1	Guide-Belt, Spindle
7	109-9505	1	Washer-Spring	22	120-5236	2	Adapter-Blade
8	3296-19	2	Nut-Hex	23	121-5808	1	Spring-Extension, Brake
9	322-13	1	Screw-HH	24	105-8579	2	Bolt-Blade
10	121-5796	1	Brake Arm ASM	25	49-2040	2	Screw-HWHTF
11	5-4460	2	Washer-Pivot	26	120-7082	1	Pulley-Idler
12	131-0819	2	Bushing-Sleeve	27	322-6	1	Screw-HH
13	9114524	1	Bolt-TAP, HH	28	3296-47	1	Nut-Lock, NI
14	3256-3	4	Washer-Flat	29	116-6358-03	2	Blade-Rotary
15	322-7	1	Screw-HH	30	121-2336	1	Spring-Flat
16	3296-29	3	Nut-Lock, NI	31	131-0823	1	Spacer-Brake
17	131-4529	2	Pulley Kit	33	125-2544	1	Washer-Cup
17:1		2	Pulley ASM ●				

● Not serviced separately

# Engine and Fuel Tank Assembly



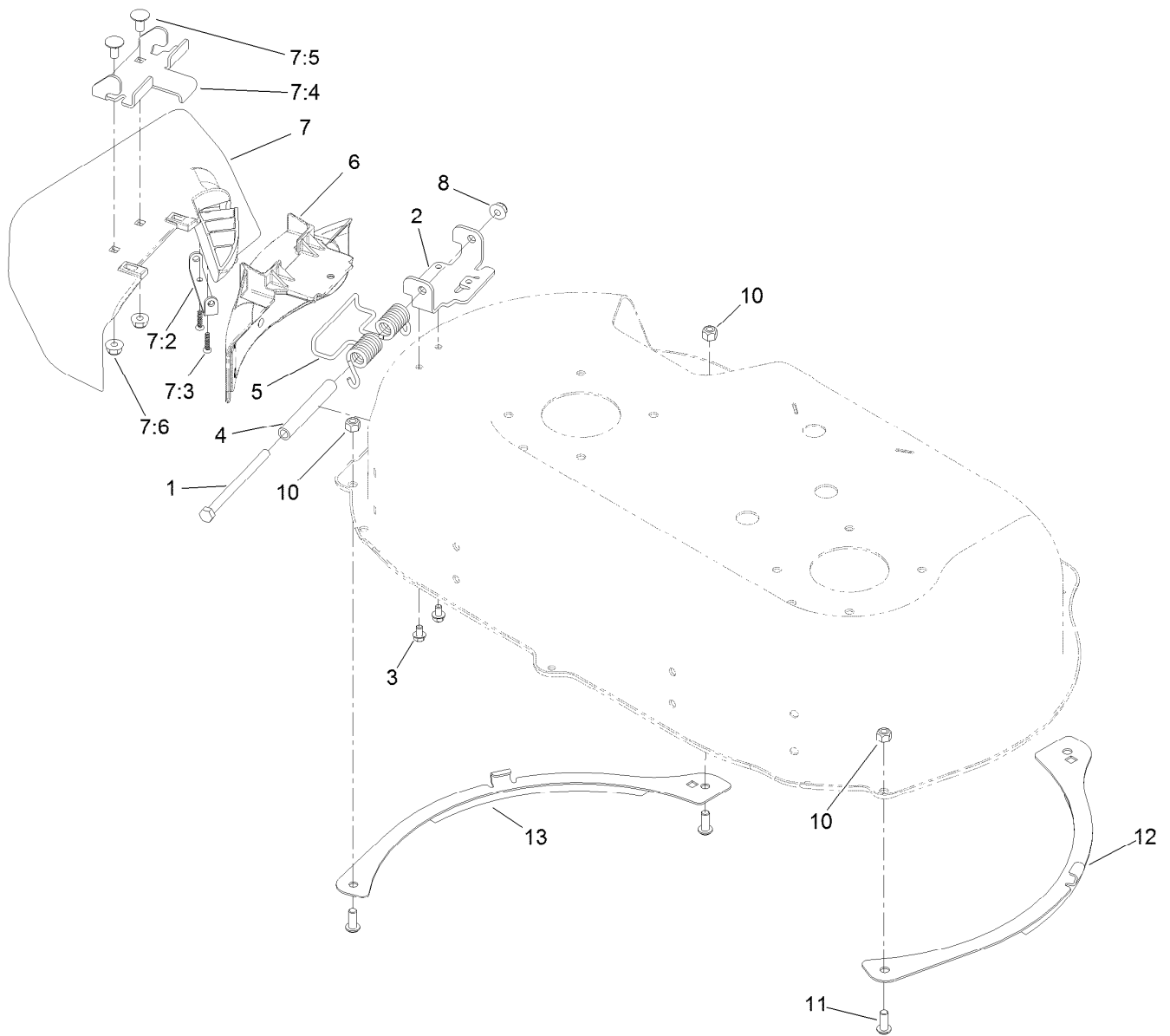


## Engine and Fuel Tank Assembly (continued)

<i>Ref.</i>	<i>Part Number</i>	<i>Qty.</i>	<i>Description</i>	<i>Ref.</i>	<i>Part Number</i>	<i>Qty.</i>	<i>Description</i>
1	119-1892	1	Hose-Fuel	15	46-8091	2	Screw-HWH
2	116-7013	1	Pulley-Engine	16	109-0304	2	Hose-Fuel
3	121-5765	1	V-Belt	17	1-603770	1	Valve-Fuel
4	116-7116	1	Belt	18	2412-98	6	Clamp-Hose
5	120-7077	1	Guide-Belt	19	114-3415	1	Decal
6	95-1726	3	Screw-Taptite	20	115-0962	1	Hose-Vent, Canister
7	3290-465	1	Washer-Belleville	21	116-2220-03	1	Bracket-Mount, Throttle
8	3212-4	1	Screw-HH	22	3229-30	1	Screw-CARR
9	109-6528	1	Decal	23	3256-23	1	Washer-Flat
10		1	Engine-Kawasaki, Fj180V ● ■	24	116-2248	1	Throttle
11	115-0954-03	1	Mount-Tank	25	104-7201	1	Nut-Flange, NI
12	125-5066	1	Tank-Fuel	26	117-2718	1	Decal-Arrester, Spark
13	109-6776	1	Cap-Ratchet, Tethered	27	71-9280	1	Filter-Fuel
14	116-8929	3	Screw-HWH	28	116-9313	1	Decal-Warning, Engine

● Not serviced separately

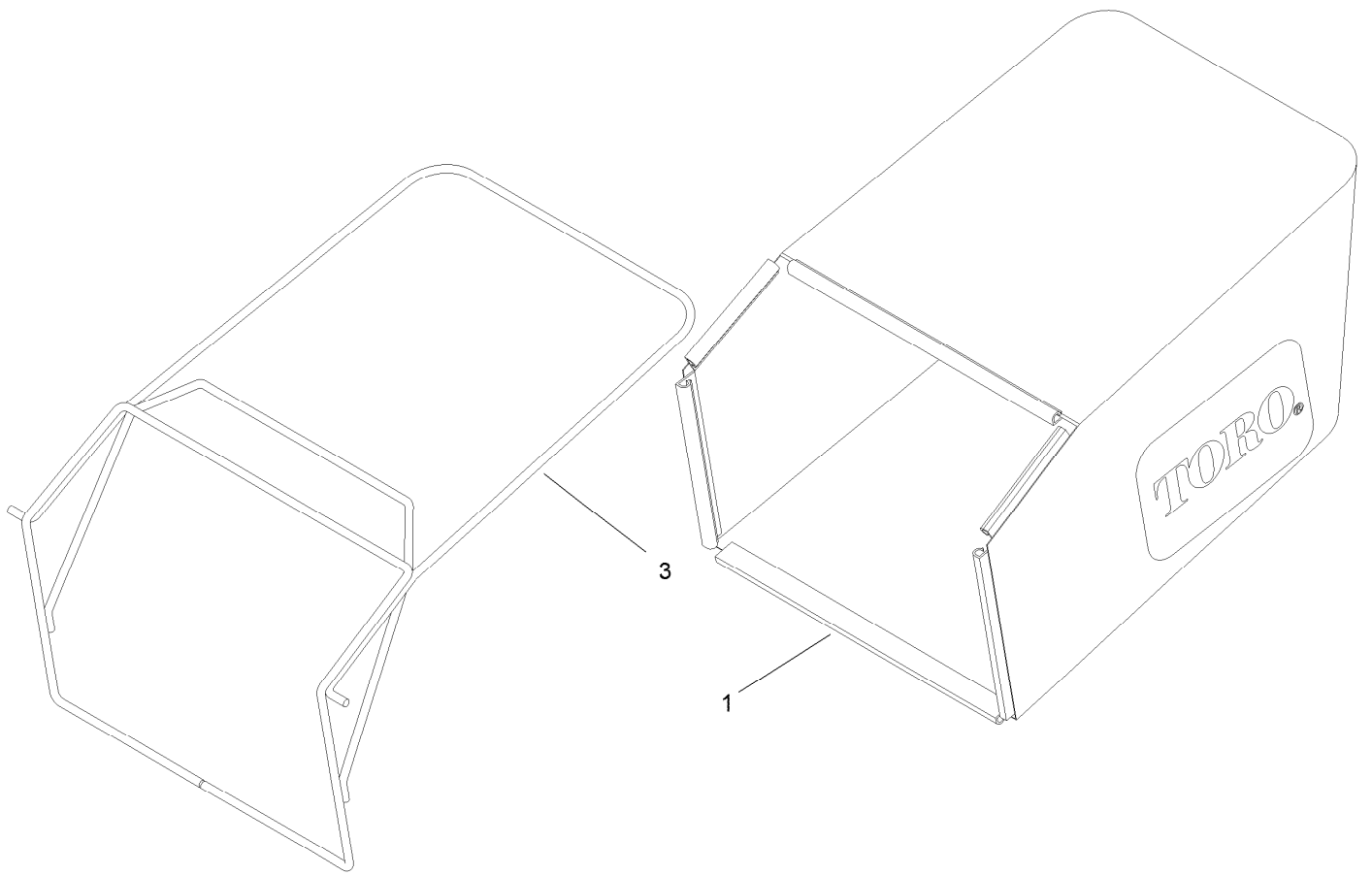
■ Obtain parts from [www.kawpowerepc.com](http://www.kawpowerepc.com)



## Side Discharge Chute Assembly

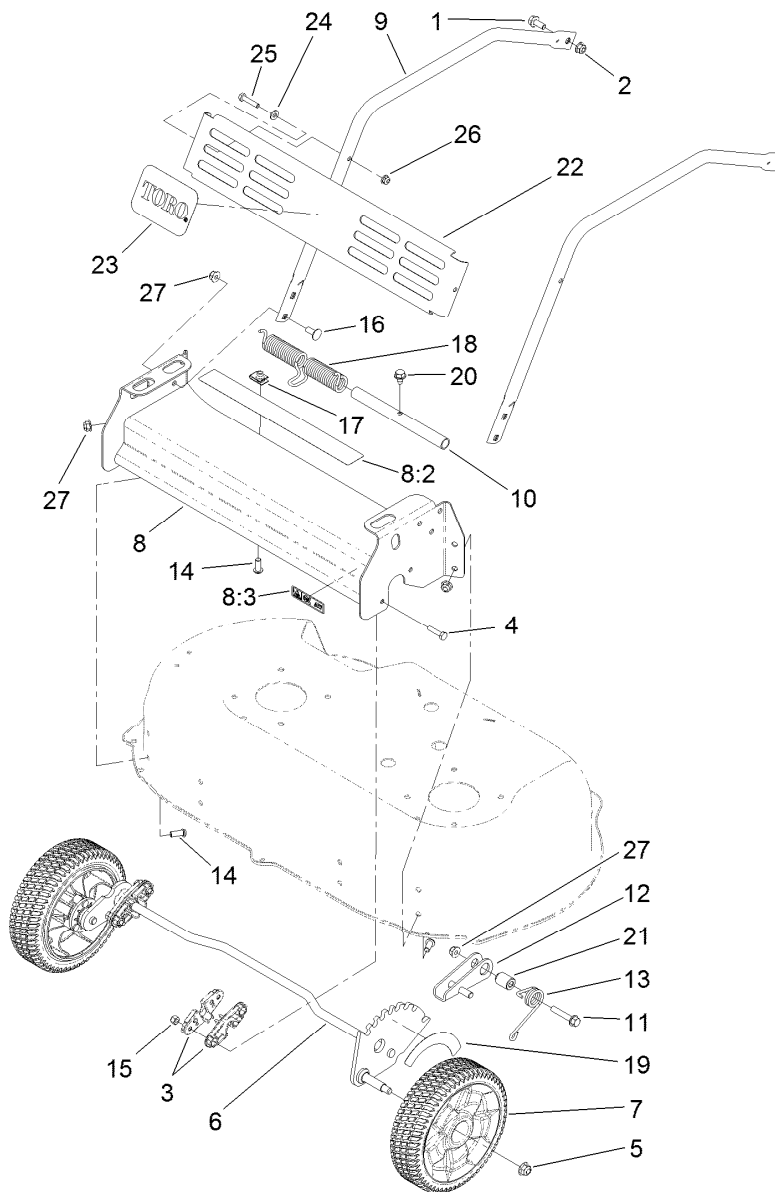
Ref.	Part Number	Qty.	Description
1	322-38	1	Screw-HH
2	121-9195	1	Hinge
3	99-8445	2	Screw-HWH
4	125-2478	1	Spacer
5	121-9193	1	Spring-Torsion
6	121-9194-01	1	Cover-Discharge
7	125-2450	1	Side Discharge Chute ASM
7:2	112-6416	1	Bracket-Cover
7:3	94-4496	2	Screw-PPH

Ref.	Part Number	Qty.	Description
7:4	121-9196	1	Bracket-Chute
7:5	3230-18	2	Screw-CARR
7:6	104-8300	2	Nut-Flange, NI
8	104-8300	1	Nut-Flange, NI
10	3296-29	3	Nut-Lock, NI
11	3274-55	3	Screw-HSBH
12	125-5074-03	1	Skid-LH
13	125-5075-03	1	Skid-RH



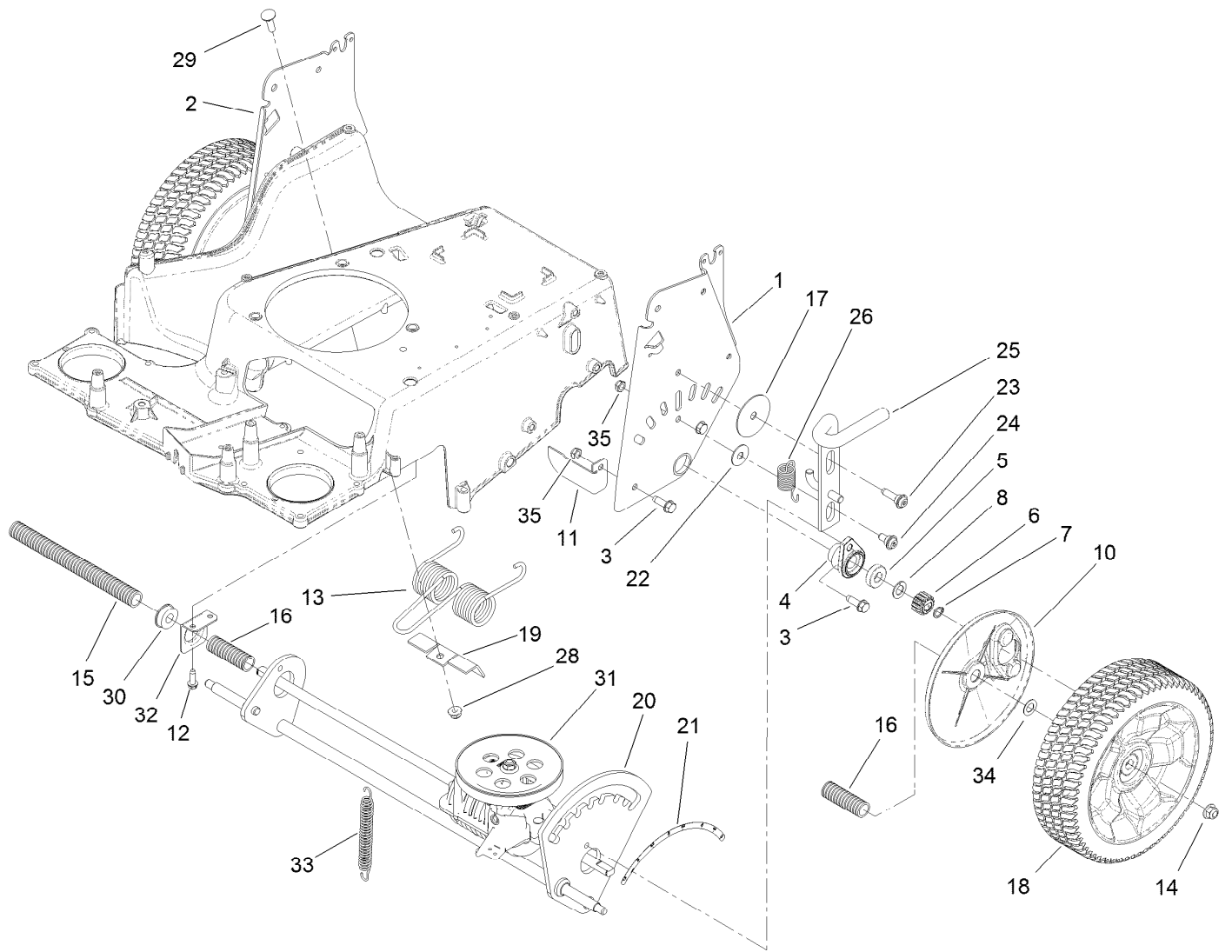
## Grass Bag Assembly

<i>Ref.</i>	<i>Part Number</i>	<i>Qty.</i>	<i>Description</i>
1	121-5775	1	Grass Bag ASM
3	116-5596-03	1	Frame-Bag



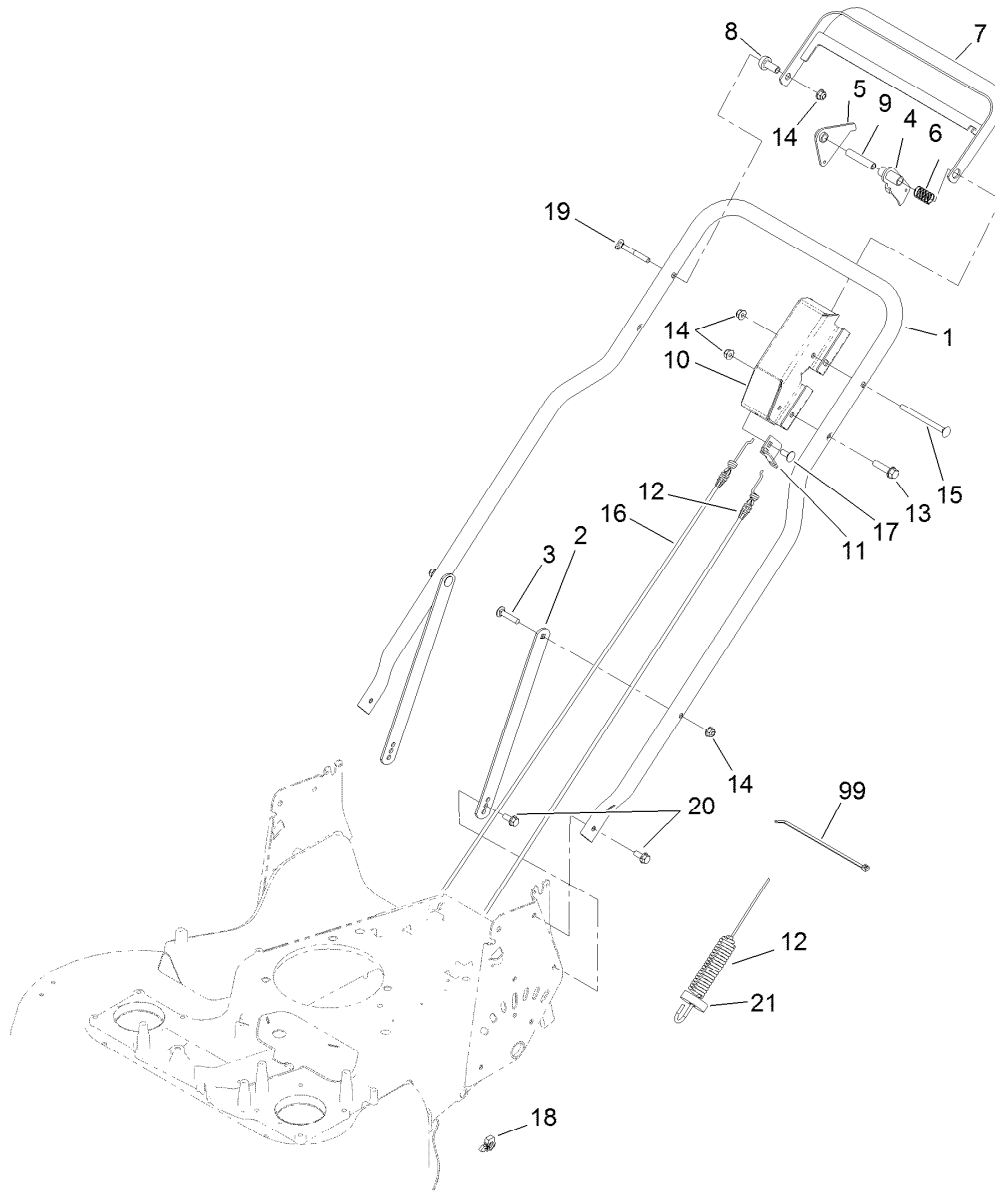
## Front Bumper and Wheel Assembly

Ref.	Part Number	Qty.	Description	Ref.	Part Number	Qty.	Description
1	116-7230	2	Screw-HHF	14	3274-55	9	Screw-HSBH
2	104-8300	2	Nut-Flange, NI	15	3296-42	4	Nut-Lock, NI
3	121-5781	4	Bushing-Front	16	3230-23	4	Screw-CARR
4	321-7	4	Screw-HH	17	94-2413	1	Nut-U
5	104-8301	2	Nut-Flange, NI	18	121-2337	1	Spring-Torsion
6	120-9454	1	Axle-Front	19	121-5846	1	Decal-HOC, Front
7	125-5057	2	8 Inch Wheel And Ring ASM	20	9266934	1	Screw
8	125-2488	1	Front Bumper ASM	21	125-2486	1	Spacer
8:2	121-5847	1	Decal	22	121-9187-03	1	Shield
8:3	116-7581	1	Decal-Warning	23	117-0871	1	Decal
9	121-9168-03	2	Brace	24	3256-22	2	Washer-Flat
10	121-5809	1	Mandrell-Spring	25	321-8	2	Screw-HH
11	94-5780	1	Screw-HWH	26	104-7201	2	Nut-Flange, NI
12	125-2483	1	Lock-Height, Adjustment	27	104-8300	13	Nut-Flange, NI
13	120-9465	1	Spring-Torsion				



## Traction and Height-of-Cut Assembly

Ref.	Part Number	Qty.	Description	Ref.	Part Number	Qty.	Description
1	121-2394-03	1	LH HOC Plate ASM	19	121-2397	1	Bracket
2	121-2395-03	1	RH HOC Plate ASM	20	120-7095	1	Axle-Rear
3	701243	7	Screw-HWHTF	21	116-7127	1	Decal-HOC, Rear
4	120-5210	2	Retainer-Bearing	22	52-2860	1	Washer
5	109-8020	2	Bearing-Ball	23	119-2267	1	Screw-Shoulder, BHTF
6	110-9417	2	Gear-Pinion, 15T	24	120-9471	1	Bolt-Shoulder
7	32151-61	2	Ring-Retaining	25	120-7090	1	Lock-Height, Adjust
8	110-7191	2	Washer-Thrust	26	120-9452	1	Spring-Extension
10	125-2480	2	Cover-Gear	28	104-8300	1	Nut-Flange, NI
11	121-5821	1	Bracket-Stop	29	3230-2	1	Bolt-CARR
12	49-2040	2	Screw-HWHTF	30	104-8699	1	Bearing-Ball
13	121-2368	1	Spring-Torsion	31	116-6999	1	Transmission
14	104-8301	2	Nut-Flange, NI	32	120-7008	1	Mount-Bearing
15	121-5799	1	Conduit-Convolute	33	120-7027	1	Spring-Extension
16	121-5800	2	Conduit-Convolute	34	36-4780	2	Washer-Plain
17	125-2540	1	Washer-Plain	35	3296-47	2	Nut-Lock, NI
18	125-5032	2	10 Inch Rear Wheel ASM				



## Handle Assembly

<i>Ref.</i>	<i>Part Number</i>	<i>Qty.</i>	<i>Description</i>	<i>Ref.</i>	<i>Part Number</i>	<i>Qty.</i>	<i>Description</i>
1	121-5827-03	1	Handle	12	127-0741	1	Cable-Brake
2	116-8208-03	2	Support-Handle	13	32144-102	1	Screw-HWH
3	3230-4	2	Screw-CARR	14	104-8300	5	Nut-Flange, NI
4	121-5831	1	BBC Lever ASM	15	106-9758	1	Screw-CARR
5	121-9136	1	Lever-Traction	16	121-9152	1	Cable-Traction
6	85-6750	1	Spring-Control	17	3230-23	1	Screw-CARR
7	121-5829-03	1	Bar-Control	18	125-2545	1	Clip-Conduit
8	49-1631	1	Spacer-Support	19	17-9427	1	Screw
9	84-9030	1	Spacer-Bracket, Control	20	116-7230	4	Screw-HHF
10	121-5789-03	1	Bracket-Control	21	1-323417	2	Washer
11	121-9166	1	Bracket	99	614249	3	Tie-Cable

# Attachments and Accessories

## For 22200 30in TurfMaster Walk-Behind Lawn Mower

<b>Product Name</b>	<b>Model/Part</b>
Atomic Blade 15.4in.....	120-9500-03
Mulching Kit.....	125-5064
Idler Pulley Kit.....	126-7890



**Count on it.**