



BBC Arm Service Kit

TimeMaster 30in or 76cm Lawn Mower

Model No. 133-8158

Installation Instructions

▲ WARNING

CALIFORNIA Proposition 65 Warning

This product contains a chemical or chemicals known to the State of California to cause cancer, birth defects, or reproductive harm.

Installation

Loose Parts

Use the chart below to verify that all parts have been shipped.

Procedure	Description	Qty.	Use
1	No parts required	–	Prepare the machine for installation.
2	No parts required	–	Remove the existing brake arm and brake cable.
3	Brake arm Brake cable Rubber spacer Cable tie	1 1 1 2	Install the brake arm and brake cable.

1

Preparing the Machine for Installation

No Parts Required

Procedure

Important: Refer to your machine *Operator's Manual* for maintenance safety information.

1. Move the machine to a level surface.
2. Release the blade-control bar.
3. Disconnect the spark-plug wire from the spark plug.
4. Remove the blade-drive system cover from the machine (Figure 1).

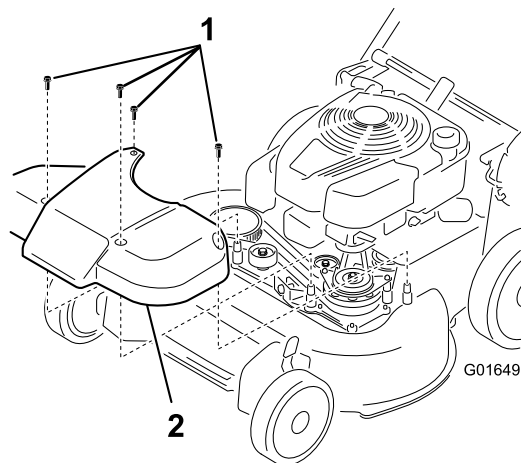


Figure 1

1. Bolt (4)
 2. Blade-drive system cover
-
5. Tip the machine onto its side, with the air filter facing upward, until the upper handle rests on the ground.



Important: Tipping the machine may cause the fuel to leak. Fuel is flammable and explosive, and can cause personal injury. Run the engine dry to remove the fuel with a hand pump; never siphon the fuel.

6. Use a block of wood to hold each blade steady (Figure 2).

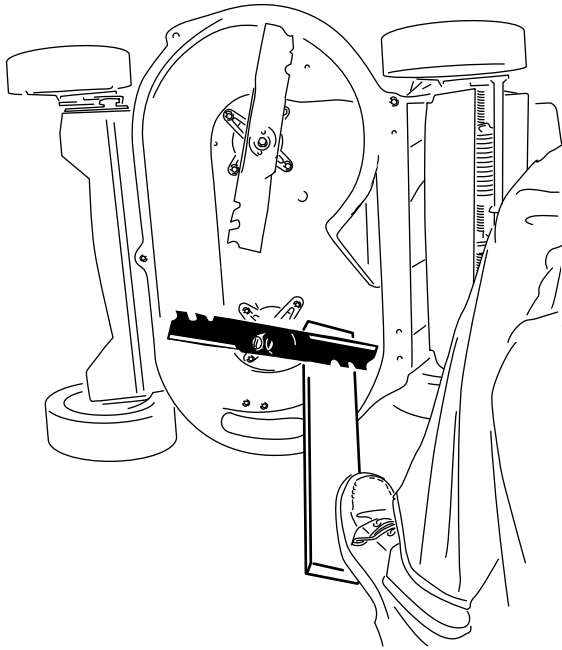


Figure 2

g196361

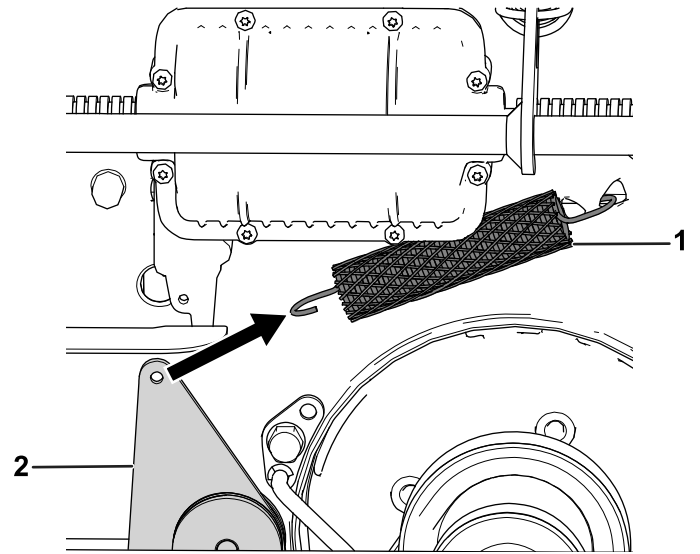


Figure 4

g194726

1. Brake-extension spring
2. Brake arm

7. Remove the transmission belt and the transmission tension spring from the machine (Figure 3).

Note: Removing the transmission belt and the transmission tension spring allows access to the brake arm.

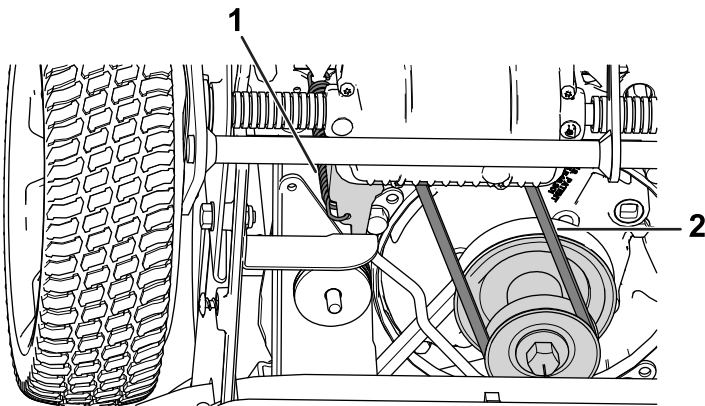


Figure 3

g193793

1. Transmission tension spring
2. Transmission belt

8. Remove the brake-extension spring from the brake arm (Figure 4).

2

Removing the Existing Brake Arm and Brake Cable

No Parts Required

Procedure

1. Remove the brake cable from the brake-arm hook (Figure 5).

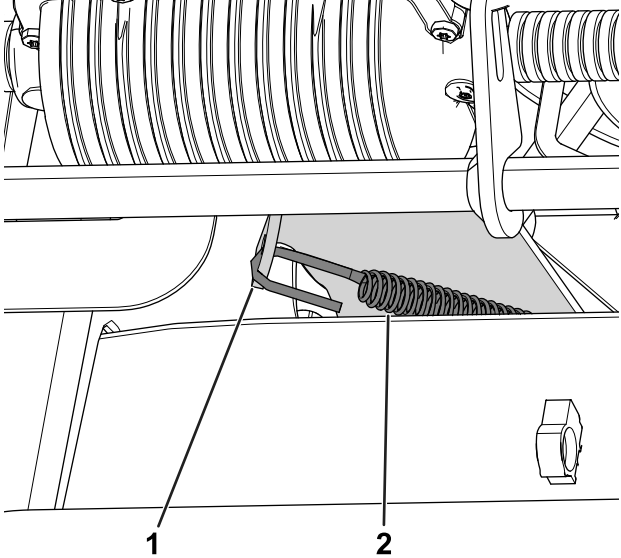
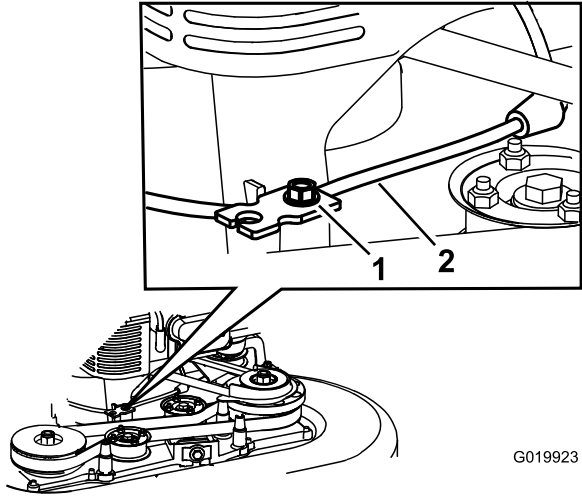


Figure 5

g194452

1. Brake-arm hook
2. Brake cable

2. Loosen the cable-clamp screw and slide the cable out from under the engine (Figure 6).



G019923

g019923

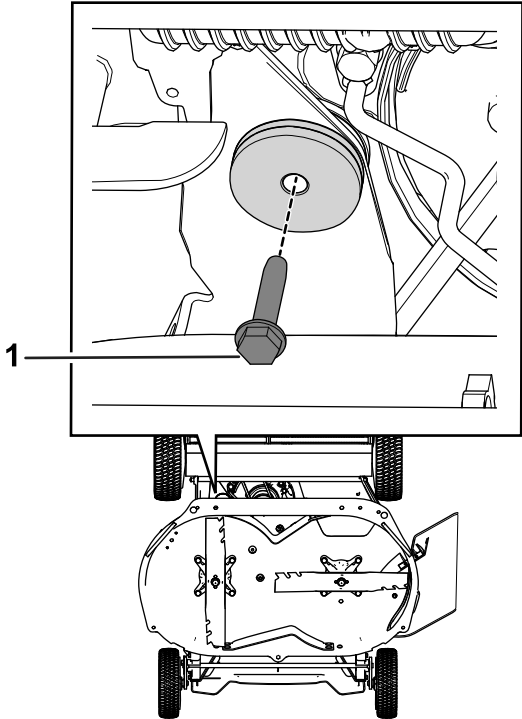
Figure 6

1. Cable-clamp screw
2. Brake cable

3. Remove the brake arm from the machine.

Note: The brake arm can be mounted onto the machine with a thread-forming screw **or** a bolt and a nut.

- For machines with a thread-forming screw that secures the brake arm onto the machine:
Remove the thread-forming screw; retain and set it aside (Figure 7)



g195872

Figure 7

1. Thread-forming screw

- For machines with a bolt and a nut that secures the brake arm onto the machine:

Remove the bolt and the nut; retain and set them aside (Figure 8 and Figure 9).

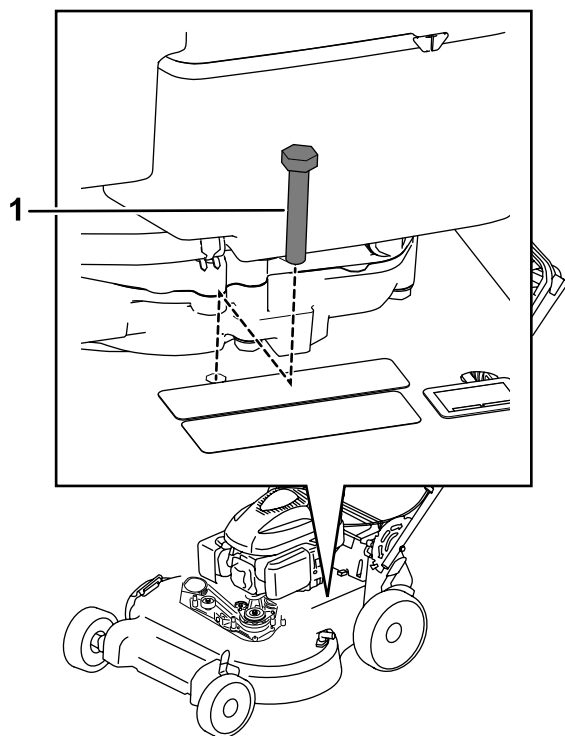


Figure 8

g194201

1. Bolt

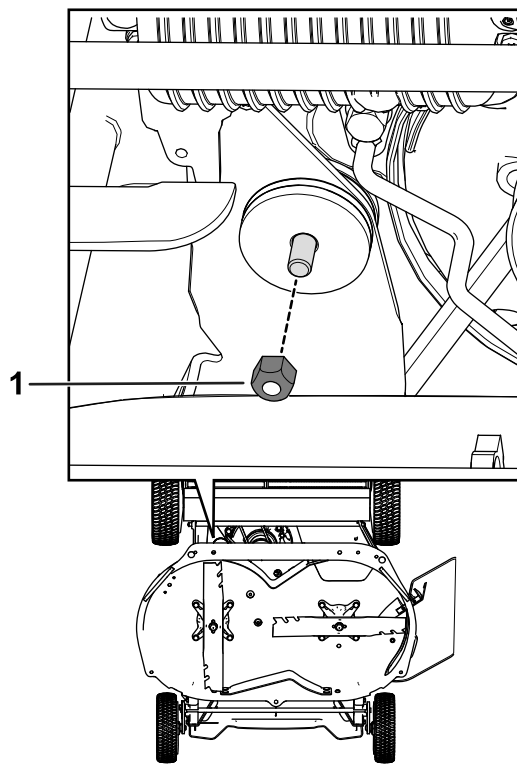


Figure 9

g194514

1. Nut

Important: Retain all hardware for use in 3 Installing the Brake Arm and Brake Cable (page 4).

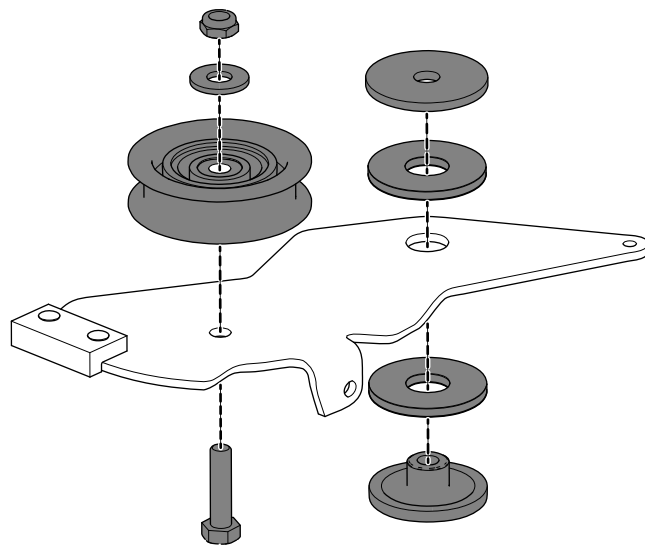


Figure 10

g193781

5. Cut and remove the existing cable ties.
6. Disconnect the brake cable from the blade-control bar; retain and set the push nut aside (Figure 11).

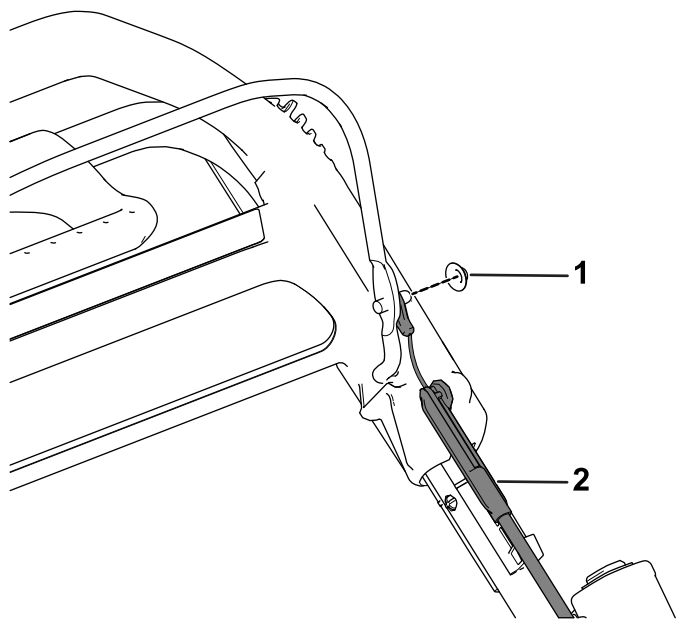


Figure 11

g193932

1. Push nut
2. Brake cable

4. Remove the hardware from the brake arm (Figure 10).

3

Installing the Brake Arm and Brake Cable

Parts needed for this procedure:

1	Brake arm
1	Brake cable
1	Rubber spacer
2	Cable tie

Procedure

1. Install the rubber spacer and the hardware from the old brake arm onto the new brake arm (Figure 12).

Important: Inspect the rubber friction washers for excessive wear. Replace the washers if necessary.

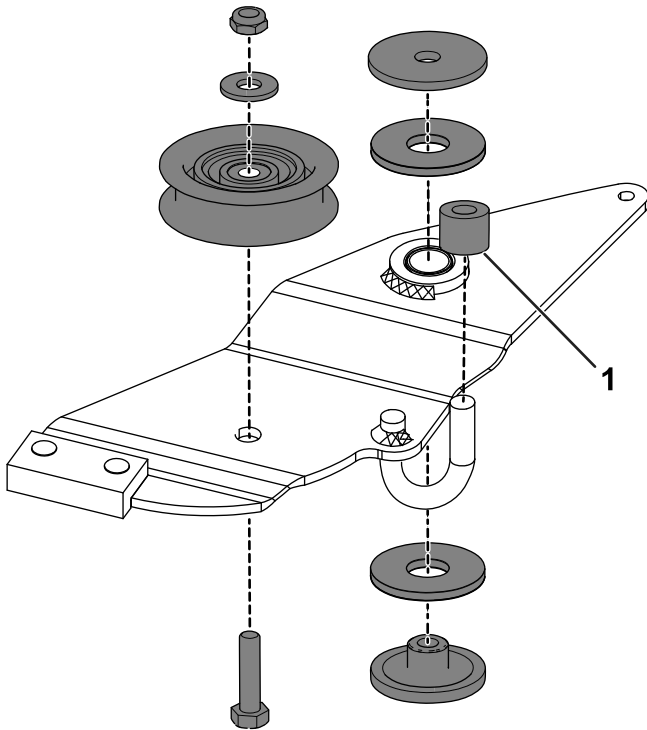


Figure 12

g193739

1. Rubber spacer

2. Guide the rubber spacer along the hook until it is flush with the plate.
3. Torque the bolt that you previously removed in step 4 to 10 to 13 N·m (85 to 115 in-lb).
4. Attach the brake arm to the machine.
 - For machines with a thread-forming screw that secures the brake arm onto the machine:

Use the thread-forming screw to secure the brake arm onto the machine (Figure 7).

Note: Torque the screw to 16 to 20 N·m (144 to 176 in-lb).

- For machines with a bolt and a nut that secures the brake arm onto the machine:

Use the bolt and the nut to secure the brake arm onto the machine (Figure 8 and Figure 9).

Note: Torque the nut to 10 to 13 N·m (85 to 115 in-lb).

Note: After installation, the brake arm should have a full range of motion with a slight resistance created by the friction washers.

5. Use the push nut to install the brake cable onto the blade-control bar (Figure 11).
6. Route the brake cable through the insert below the cable clamp (Figure 6).
7. Attach the brake cable to the brake-arm hook (Figure 13).

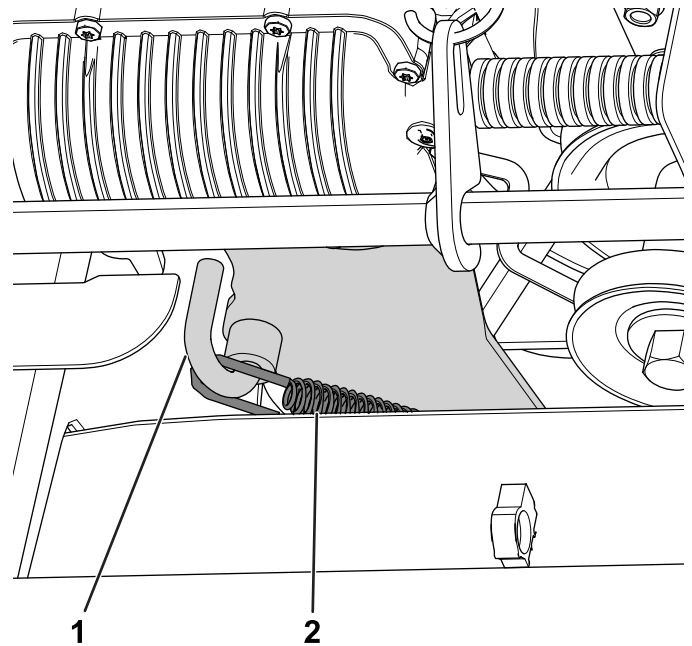


Figure 13

g195893

1. Brake-arm hook
2. Brake cable

8. Pull the cable jacket to remove slack (Figure 14).

Note: Do not put tension on the spring.

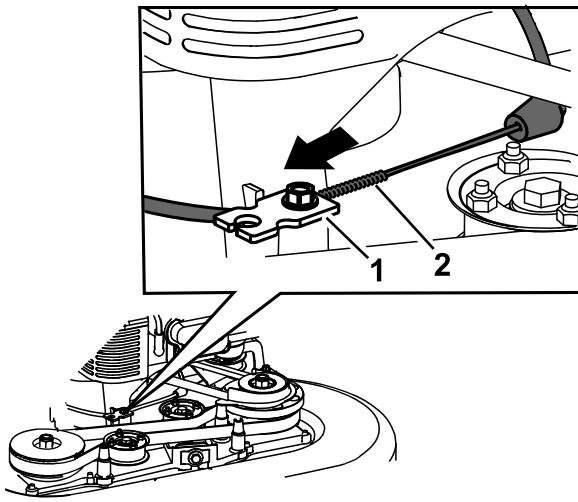


Figure 14

g195540

1. Cable clamp
2. Cable jacket

9. Mark the brake cable (Figure 15), then adjust the jacket until there is approximately 3 mm (1/8 inch) of slack (Figure 16).

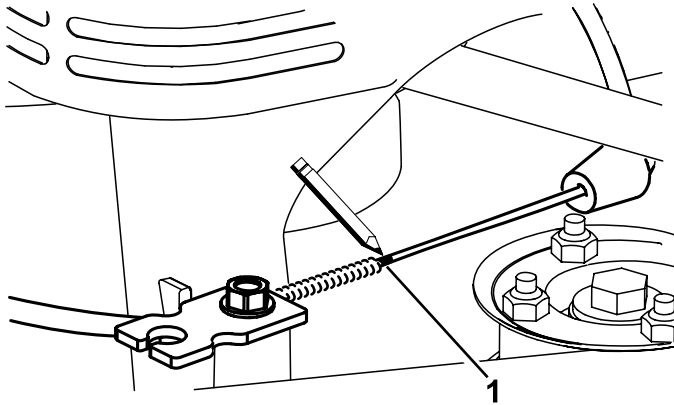


Figure 15

g195615

1. Mark the cable here

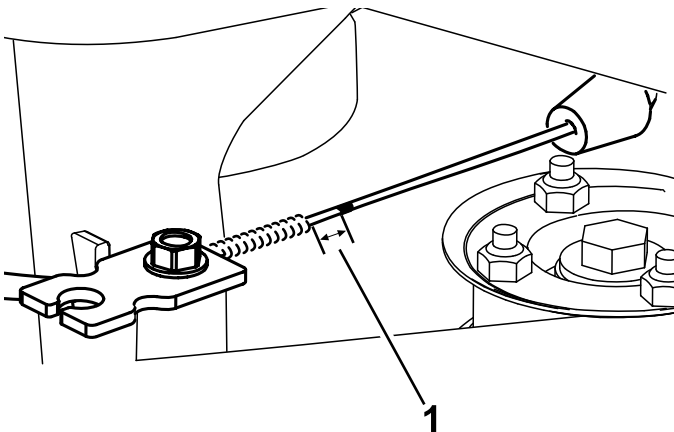


Figure 16

g195616

1. Slack—3 mm (1/8 inch)

10. Torque the cable-clamp screw to 11 to 14 N·m (99 to 121 in-lb) to lock the adjustment in place.
11. Attach 2 cable ties at the indicated locations shown in Figure 17.

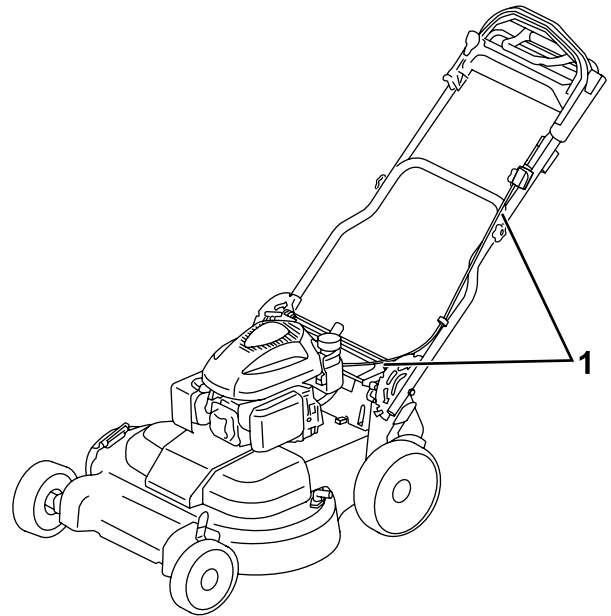


Figure 17

g194372

1. Cable tie locations

12. Attach the brake-extension spring to the brake arm.
13. Install the transmission belt and the transmission tension spring (Figure 3).
14. Install the blade-drive system cover (Figure 1).
15. Connect the spark-plug wire to the spark plug.

Notes:



Count on it.