



**Count on it.**

**Parts Catalog**

**Power Plex™ 36cm 40V MAX  
Cordless Dual-Line String Trimmer**

Model No. 51132—Serial No. 317000001 and Up



# Ordering Replacement Parts

To order replacement parts, please supply the part number, the quantity, and the description of each part desired.

## Understanding Reference Numbers

Each identified part in an illustration has a reference number. The reference number for a part also appears in the parts list, along with other information about the part.

This catalog uses two special reference number formats, one to indicate parts in a service assembly and another to indicate the quantity of a given part in an illustration.

## Service Assembly Reference Numbers

Parts in service assemblies have reference numbers in the form a:b. The a represents the reference number of the entire service assembly and the b represents a sequential number unique to each part within the service assembly.

For example, a wheel assembly might be identified by reference number 6, the tire by 6:1, the valve by 6:2, and the wheel by 6:3. When you order the assembly identified by reference number 6, you receive all parts identified by reference numbers 6:1, 6:2, and 6:3. However, you may also order any part individually. Reference numbers of this type appear in illustration and in parts lists.

## Reference Numbers Indicating Quantity

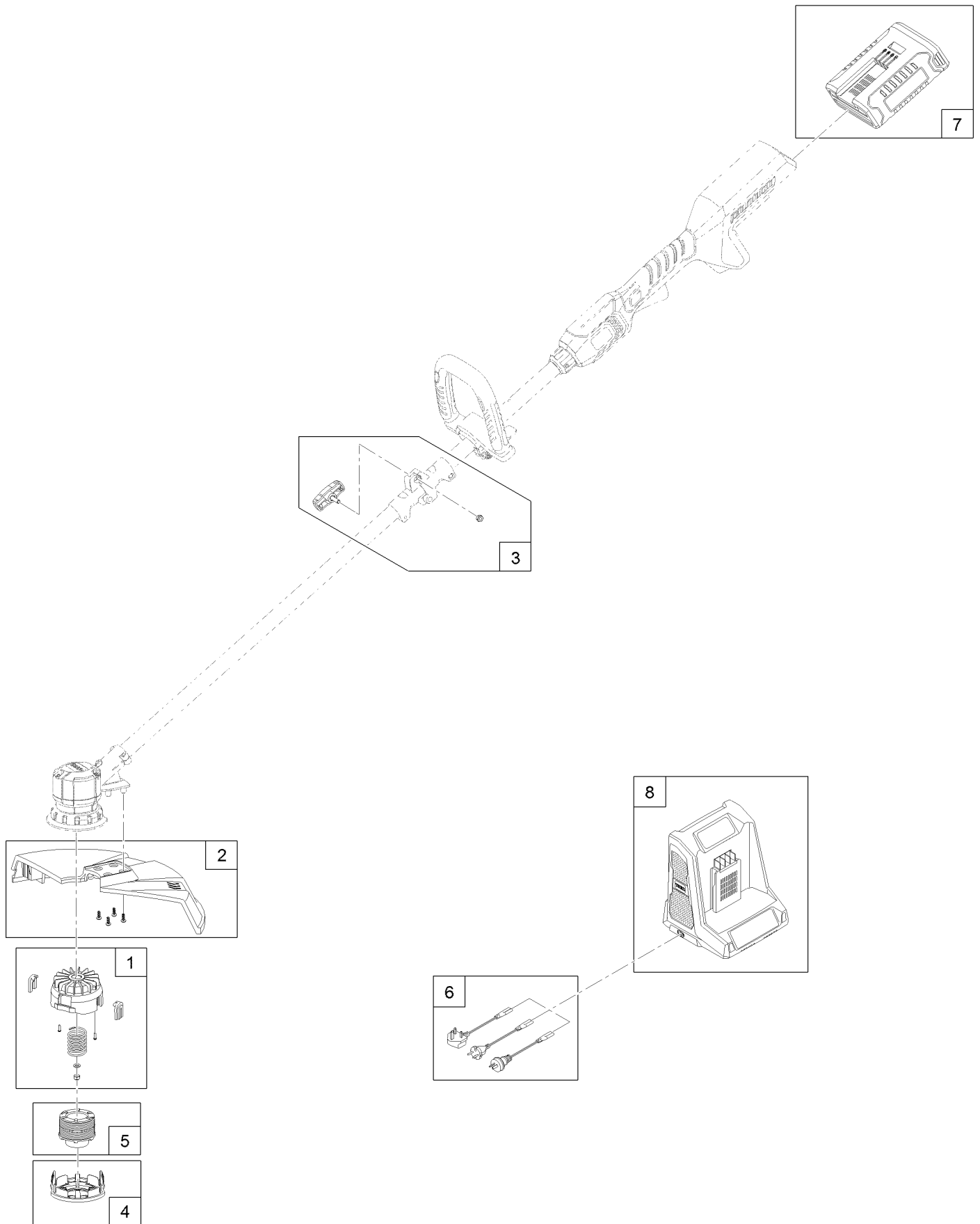
In an illustration, if a reference number indicates more than one part, the reference number has the form nX y. The n represents the quantity of the part, the X is the multiplication symbol, and the y represents the reference number.

For example, in an illustration, the reference number 2X 37 means that two of the parts identified by reference number 37 are indicated.

# Contents

36cm Cordless Dual-Line String Trimmer Assembly..... 4  
Attachments and Accessories ..... 6

# 36cm Cordless Dual-Line String Trimmer Assembly



## 36cm Cordless Dual-Line String Trimmer Assembly (continued)

<i>Ref.</i>	<i>Part Number</i>	<i>Qty.</i>	<i>Description</i>	<i>Ref.</i>	<i>Part Number</i>	<i>Qty.</i>	<i>Description</i>
1	136-2555	1	Head-Feed, Bump	5	88546TE	1	3-Pack Dual-Line Trimmer Spool
2	136-2559	1	Shield-Grass	6	136-2586	1	Cord Set
3	136-2560	1	Shaft Connection Hardware Kit	7	88525	1	Battery-40V Max
4	136-2571	1	Retainer-Cap, Spool	8	88527	1	Charger-Battery, 40V Max

# Attachments and Accessories

## For 51132 Power Plex 36cm 40V MAX Cordless Dual-Line String Trimmer

<b>Product Name</b>	<b>Model/Part</b>
33cm 40V MAX Cordless Single-Line String Trimmer .....	51130T
36cm 40V MAX Cordless Dual-Line String Trimmer .....	51132T
40V MAX Cordless Axial Blower .....	51134T
61cm 40V MAX Cordless Hedge Trimmer .....	51136T
35cm 40V MAX Cordless Chainsaw .....	51138T
40V MAX Li-Ion Standard Battery .....	88525
40V MAX Li-Ion Extended Range Battery .....	88526
40V MAX Battery Charger .....	88527
3-Pack Dual-Line Trimmer Spool .....	88546TE

**Notes:**



**Count on it.**