



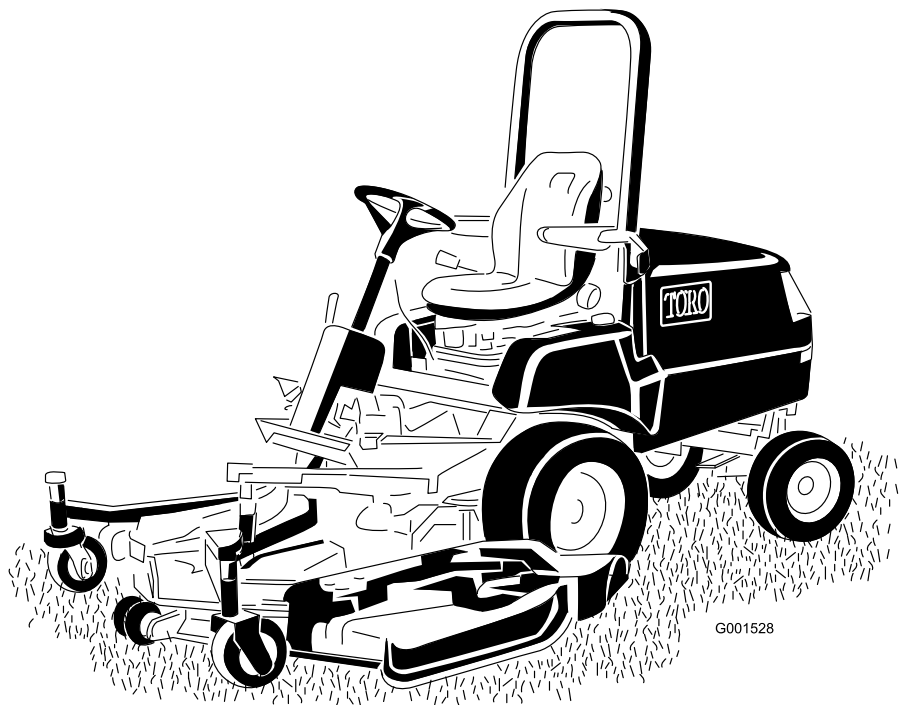
Count on it.

Operator's Manual

Groundsmaster® 3280-D Traction Unit

Model No. 30344—Serial No. 316000001 and Up

Model No. 30345—Serial No. 316000001 and Up



G001528



This product complies with all relevant European directives; for details, please see the separate product specific Declaration of Conformity (DOC) sheet.

⚠ WARNING

**CALIFORNIA
Proposition 65 Warning**

This product contains a chemical or chemicals known to the State of California to cause cancer, birth defects, or reproductive harm.

Diesel engine exhaust and some of its constituents are known to the State of California to cause cancer, birth defects, and other reproductive harm.

Genuine Toro spark arresters are approved by the USDA Forestry Service.

It is a violation of California Public Resource Code Section 4442 or 4443 to use or operate the engine on any forest-covered, brush-covered, or grass-covered land unless the engine is equipped with a spark arrester, as defined in Section 4442, maintained in effective working order or the engine is constructed, equipped, and maintained for the prevention of fire.

Introduction

This machine is a ride-on, rotary-blade lawn mower intended to be used by professional, hired operators in commercial applications. It is primarily designed for cutting grass on well-maintained lawns in parks, sports fields, and on commercial grounds. It is not designed for cutting brush, mowing grass and other growth alongside highways, or for agricultural uses.

Read this information carefully to learn how to operate and maintain your product properly and to avoid injury and product damage. You are responsible for operating the product properly and safely.

You may contact Toro directly at www.Toro.com for product safety and operation training materials, accessory information, help finding a dealer, or to register your product.

Whenever you need service, genuine Toro parts, or additional information, contact an Authorized Service Dealer or Toro Customer Service and have the model and serial numbers of your product ready. [Figure 1](#) identifies the location of the model and serial numbers on the product. Write the numbers in the space provided.

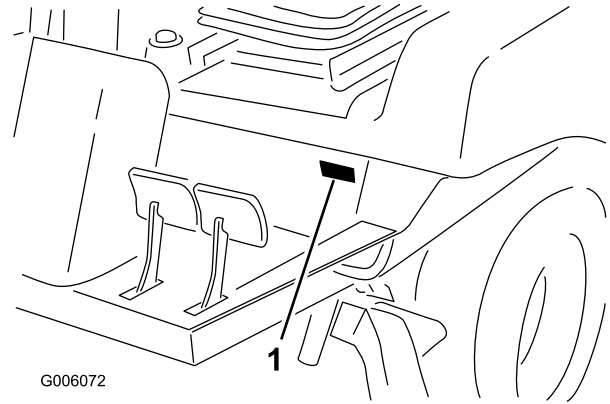


Figure 1

1. Model and serial number location

Model No. _____

Serial No. _____

This manual identifies potential hazards and has safety messages identified by the safety-alert symbol ([Figure 2](#)), which signals a hazard that may cause serious injury or death if you do not follow the recommended precautions.



Figure 2

1. Safety-alert symbol

This manual uses 2 words to highlight information.

Important calls attention to special mechanical information and **Note** emphasizes general information worthy of special attention.

Contents

Safety	4	Greasing the Bearings and Bushings	38
General Safety.....	4	Engine Maintenance	40
Sound Power Level.....	4	Servicing the Air Cleaner	40
Sound Pressure Level.....	4	Servicing the Engine Oil.....	41
Vibration Level	4	Fuel System Maintenance	42
Safety and Instructional Decals	5	Servicing the Water Separator	42
Setup	10	Cleaning the Fuel Tank.....	43
1 Installing the Steering Wheel.....	12	Inspecting the Fuel Lines and Connections.....	43
2 Installing the Hood Handle	12	Bleeding the Air from the Fuel-Injector Tubing	43
3 Installing the Seat.....	12	Electrical System Maintenance	43
4 Installing the Seat Belt	13	Electrical System Safety.....	43
5 Installing the Manual Tube	13	Servicing the Battery	43
6 Adjusting the ROPS	14	Accessing the Fuse Block and Standard Control Module.....	45
7 Activating and Charging the Battery.....	14	Accessing the Fuses	45
8 Checking the Fluid Levels	16	Standard Control Module (SCM)	46
9 Checking the Air Pressure in the Tires	16	Servicing the Wiring Harness	47
10 Installing the Lift-Lock Lever	17	Drive System Maintenance	47
11 Adjusting the Weight Transfer of the Mower Deck.....	17	Torquing the Wheel-Lug Nuts.....	47
12 Installing the Rear Weights.....	19	Maintaining the Rear Axle (Model 30345 Only)	47
13 Reading the Manuals and Viewing the Training Materials.....	20	Maintaining the Bidirectional Clutch	49
Product Overview	21	Maintaining the Rear Wheel Alignment.....	49
Controls	21	Torquing the Bolts for the Steering-Cylinder Mount (Model 30345 Only)	50
Brakes	21	Adjusting the Traction Drive for Neutral.....	50
Specifications	24	Adjusting Steering Stops (Model 30345 Only)	52
Attachments/Accessories.....	24	Cooling System Maintenance	53
Before Operation	24	Cooling System Safety.....	53
Before Operation Safety.....	24	Coolant Specification.....	53
Accessing the Machine.....	25	Checking the Cooling System and Coolant Level.....	53
Checking the Machine Daily.....	26	Checking the Hood Screen and Radiator for Debris.....	54
Checking the Air Pressure in the Tires.....	26	Cleaning the Hood Screen and Radiator	54
Checking the Interlock System	27	Brake Maintenance	54
Adding Fuel to the Machine.....	27	Adjusting the Service Brakes	54
Adjusting the Rollover Protection System (ROPS)	28	Adjusting the Parking-Brake-Interlock Switch.....	55
Adjusting the Tilt-Steering Control	29	Belt Maintenance	56
During Operation	29	Checking the Condition of the Alternator Belt.....	56
General Safety.....	29	Tensioning the Alternator Belt	56
Rollover Protection System (ROPS) Safety	30	Servicing the PTO Belt.....	56
Slope Safety.....	30	Controls System Maintenance	57
Starting and Shutting Off the Engine.....	30	Adjusting the PTO Clutch Gap	57
Resetting the PTO Function	31	Adjusting the Traction Pedal	57
Bleeding the Fuel-Injection Pump.....	31	Hydraulic System Maintenance	59
Operating Tips	32	Hydraulic System Safety	59
After Operation	32	Hydraulic Fluid Specification	59
After Operation Safety	32	Servicing the Hydraulic System.....	59
Pushing or Towing the Machine.....	32	Storage	61
Hauling the Machine.....	33	Storing the Battery.....	61
Maintenance	34	Preparing the Machine	61
Recommended Maintenance Schedule(s)	34	Preparing the Engine	62
Daily Maintenance Checklist	35		
Pre-maintenance Procedures	36		
Pre-Maintenance Safety.....	36		
Hydraulic Pump Access.....	37		
Lubrication	38		

Safety

This machine has been designed in accordance with EN ISO 5395:2013 when equipped with the proper CE kit (refer to the Declaration of Conformity) and rear weight; refer to [12 Installing the Rear Weights \(page 19\)](#).

This machine has been designed in accordance with ANSI B71.4-2012, when equipped with the proper rear weight; refer to [12 Installing the Rear Weights \(page 19\)](#).

Improper use or maintenance by the operator or owner can result in injury. To reduce the potential for injury, comply with these safety instructions and always pay attention to the safety alert symbol, which means Caution, Warning, or Danger—personal safety instruction. Failure to comply with the instruction may result in personal injury or death.

General Safety

This product is capable of amputating hands and feet and of throwing objects. Always follow all safety instructions to avoid serious personal injury.

Using this product for purposes other than its intended use could prove dangerous to you and bystanders.

- Read and understand the contents of this *Operator's Manual* before you start the engine. Ensure that everyone using this product knows how to use it and understands the warnings.
- Do not put your hands or feet near moving components of the machine.
- Do not operate the machine without all guards and other safety protective devices in place and working on the machine.
- Keep clear of any discharge opening. Keep bystanders a safe distance from the machine.
- Keep children out of the operating area. Never allow children to operate the machine.
- Stop the machine, set the parking brake, and shut off the engine before servicing, fueling, or unclogging the machine.

Improperly using or maintaining the machine can result in injury. To reduce the potential for injury, comply with these safety instructions and always pay attention to the safety-alert symbol, which means Caution, Warning, or Danger—personal safety instruction. Failure to comply with these instructions may result in personal injury or death.

You can find additional items of safety information in their respective sections throughout this manual.

Sound Power Level

This unit has a guaranteed sound power level of 105 dBA, which includes an Uncertainty Value (K) of 1 dBA.

Sound power level was determined according to the procedures outlined in ISO 11094.

Sound Pressure Level

This unit has a sound pressure level at the operator's ear of 90 dBA, which includes an Uncertainty Value (K) of 1 dBA.

Sound pressure level was determined according to the procedures outlined in EN ISO 5395:2013.

Vibration Level

Hand-Arm

Measured vibration level for right hand = 0.70 m/s²

Measured vibration level for left hand = 0.60 m/s²

Uncertainty Value (K) = 0.5 m/s²

Measured values were determined according to the procedures outlined in EN ISO 5395:2013.

Whole Body

Measured vibration level = 0.33 m/s²

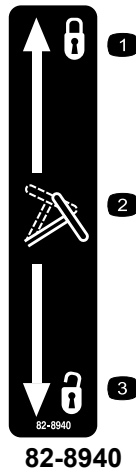
Uncertainty Value (K) = 0.17 m/s²

Measured values were determined according to the procedures outlined in EN ISO 5395:2013.

Safety and Instructional Decals



Safety decals and instructions are easily visible to the operator and are located near any area of potential danger. Replace any decal that is damaged or lost.



- | | |
|------------------|-------------|
| 1. Locked | 3. Unlocked |
| 2. Tilt steering | |



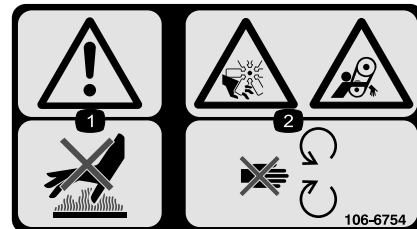
92-1582



Battery Symbols

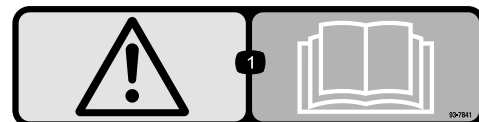
Some or all of these symbols are on your battery.

- | | |
|--|---|
| 1. Explosion hazard | 6. Keep bystanders a safe distance from the battery. |
| 2. No fire, open flames, or smoking | 7. Wear eye protection; explosive gases can cause blindness and other injuries. |
| 3. Caustic liquid/chemical burn hazard | 8. Battery acid can cause blindness or severe burns. |
| 4. Wear eye protection. | 9. Flush eyes immediately with water and get medical help fast. |
| 5. Read the <i>Operator's Manual</i> . | 10. Contains lead; do not discard. |



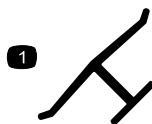
106-6754

- Warning—do not touch the hot surface.
- Cutting/dismemberment hazard, fan and entanglement hazard, belt—stay away from moving parts.



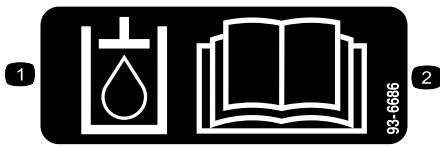
93-7841

- Warning—read the *Operator's Manual*.



Manufacturer's Mark

- Indicates the blade is identified as a part from the original machine manufacturer.



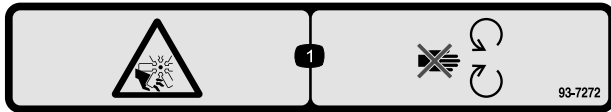
93-6686

1. Hydraulic fluid
2. Read the *Operator's Manual*.



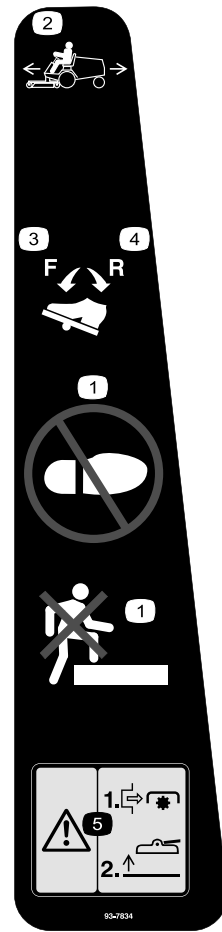
93-6697
(Model 30345)

1. Read the *Operator's Manual*.
2. Add SAE 80w-90 (API GL-5) oil every 50 hours.



93-7272

1. Cutting/dismemberment hazard; fan—stay away from moving parts.



93-7834

1. No step
2. Traction pedal
3. Traction-forward
4. Traction-reverse
5. Warning—shut off PTO prior to raising decks; do not operate decks when they are in raised position



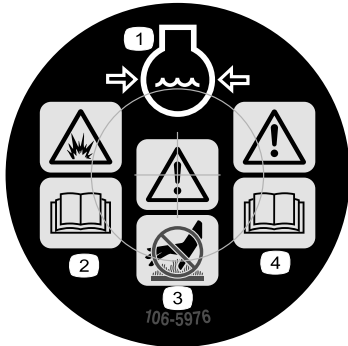
105-2511

1. Read *Operator's Manual* for starting instructions.



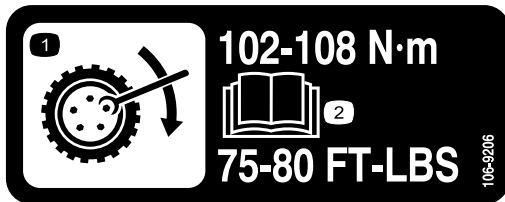
105-7179

1. Read the *Operator's Manual*.
2. Parking brake



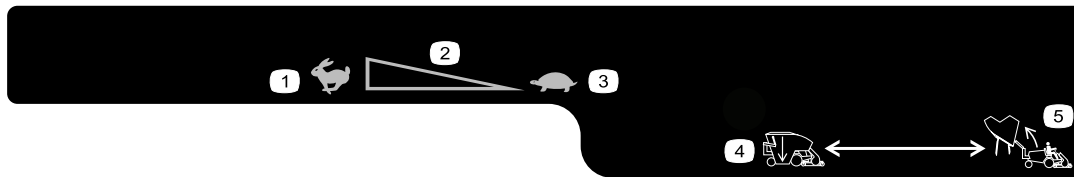
106-5976

1. Engine coolant under pressure
2. Explosion hazard—read the *Operator's Manual*.
3. Warning—do not touch the hot surface.
4. Warning—read the *Operator's Manual*.



106-9206

1. Wheel torque specifications
2. Read the *Operator's Manual*.



119-4832

1. Fast
2. Continuous variable setting
3. Slow
4. Lower the hopper
5. Raise the hopper



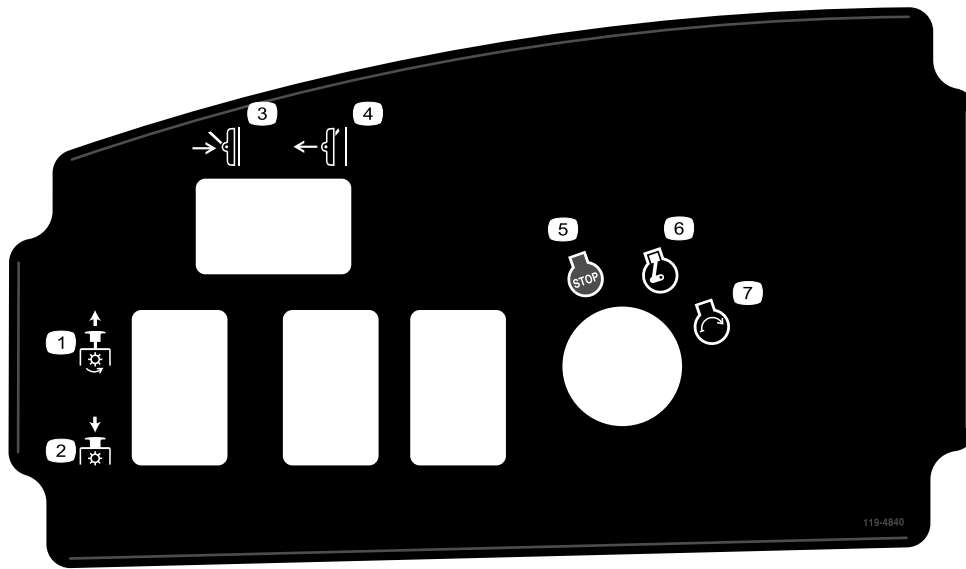
108-2073

1. Warning—there is no rollover protection when the roll bar is down.
2. To avoid injury or death from a rollover accident, keep the roll bar in the raised and locked position and wear the seat belt. Lower the roll bar only when absolutely necessary; do not wear the seat belt when the roll bar is down.
3. Read the *Operator's Manual*; drive slowly and carefully.

CALIFORNIA SPARK ARRESTER WARNING

Operation of this equipment may create sparks that can start fires around dry vegetation. A spark arrester may be required. The operator should contact local fire agencies for laws or regulations relating to fire prevention requirements. 117-2718

117-2718



119-4840

- 1. PTO—On
- 2. PTO—Off
- 3. Lower deck
- 4. Raise deck
- 5. Engine—stop
- 6. Engine—run
- 7. Engine—start

CHECK/SERVICE

1. OIL LEVELS (ENGINE /TRANS.)
2. COOLANT LEVEL
3. TIRE PRESSURE
4. BELTS (FAN & PTO)
5. FUEL - DIESEL ONLY
6. BATTERY
7. GREASE, LUBE POINTS
8. RADIATOR SCREEN
9. AIR CLEANER
10. ELECTRIC CLUTCH GAP .015-.030
11. PTO BELT TENSION
12. WATER SEPARATOR
13. FUEL FILTER

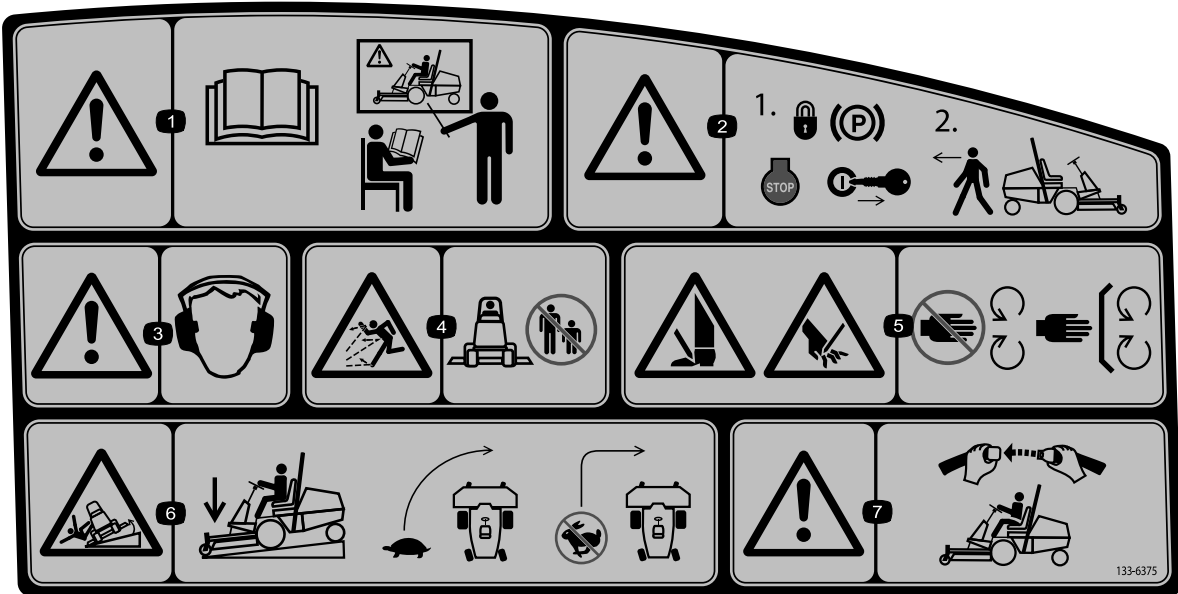
GM 3280-D QUICK REFERENCE AID

FLUID SPECIFICATIONS
 *See operator's manual for initial changes.

	CAPACITY	*CHANGE INTERVALS	FILTERS	PART NO.
ENGINE OIL	3.9 QT. WITH FILTER	OIL & FILTER 150 HRS.	A. AIR	108-3810
TRANS OIL	6 QT.	FILTER 200 HRS.	B. FUEL	98-7612
FUEL	12.8 GAL.	FILTER 400 HRS.	C. FUEL	98-9764
COOLANT	8 QT.	1500 HRS.	D. TRANS. OIL	54-0110
			E. ENGINE OIL	108-3841

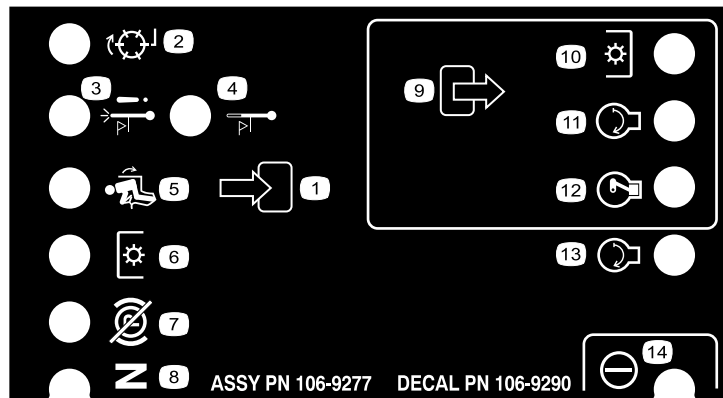
133-6377

133-6377



133-6375

1. Warning—read the *Operator's Manual*, all operators should be trained before operating the machine.
2. Warning—engage the parking brake, and remove the ignition key before leaving the machine.
3. Warning—hearing protection must be worn.
4. Thrown object hazard—keep bystanders a safe distance from the machine and keep the deflector in place.
5. Cutting/dismemberment hazard of hands or feet, mower blade—stay away from moving parts.
6. Tipping hazard—when driving down slopes, lower the cutting unit, slow machine before turning, and do not turn at high speeds.
7. Warning—if the roll bar is installed, wear the seat belt.



106-9290

- | | | | |
|------------------------------|-------------------------|---------------------------|-----------|
| 1. Inputs | 5. In seat | 9. Outputs | 13. Start |
| 2. Not active | 6. Power Take-off (PTO) | 10. Power Take-off (PTO) | 14. Power |
| 3. High temperature shutdown | 7. Parking brake Off | 11. Start | |
| 4. High temperature warning | 8. Neutral | 12. Energize to Run (ETR) | |

Setup

Loose Parts

Use the chart below to verify that all parts have been shipped.

Procedure	Description	Qty.	Use
1	Steering wheel	1	Install the steering wheel.
	Cover	1	
2	Handle	1	Install the hood handle.
	Screws	2	
3	Seat—Model No. 30398 (optional kit)	1	Install the seat.
	Mechanical seat suspension kit—Model No. 30312 (optional kit) or Pneumatic seat suspension kit—Model No. 30313 (optional kit)	1	
4	Seat belt	1	Install the seat belt.
	Bolts (7/16 x 1 inch)	2	
	Lock washer (7/16 inch)	2	
	Flat washer (7/16 inch)	2	
5	Manual tube	1	Install the manual tube.
	R-clamp	2	
6	No parts required	–	Adjust the ROPS.
7	No parts required	–	Activate and charge the battery.
8	No parts required	–	Check the fluid levels.
9	No parts required	–	Check the air pressure in the tires.
10	Lift-lock lever	1	Install the lift-lock lever.
	Flat washer	1	
	Spring washer	1	
	Spacer	1	
	Screw (1/4 x 1 inch)	1	
	Flange locknut (1/4 inch)	1	
11	No parts required	–	Adjust the weight transfer pressure.
12	Rear weight kit(s)—as needed	-	Install the rear weights.

Procedure	Description	Qty.	Use
13	Operator's Manual	2	Read the manuals and watch the training materials before operating the machine. Use the listed hardware for the installation of attachments.
	Engine Operator's Manual	1	
	Parts Catalog	1	
	Operator Training Material	1	
	Pre-delivery Inspection Sheet	1	
	Certificate of compliance	1	
	Certificate of Quality	1	
	Roll pin	1	
	Bolt (5/16 x 1-3/4 inches)	2	
	Locknut (5/16 inch)	2	
	Cylinder pin	2	
Cotter pin (3/16 x 1-1/2 inches)	4		
Brake-return springs	2		

Media and Additional Parts

Description	Qty.	Use
Operator's Manual	1	Review before operating machine
Engine owner's Manual	1	Use to reference engine information
Parts Catalog	1	Use to reference part numbers
Operator training materials	1	Review before operating machine
Declaration of Conformity	1	-

⚠ WARNING

The PTO universal shaft is attached to the machine frame. Do not operate the PTO without first removing the universal shaft or coupling it to a suitable implement.

Note: Determine the left and right sides of the machine from the normal operating position.

1

Installing the Steering Wheel

Parts needed for this procedure:

1	Steering wheel
1	Cover

Procedure

1. Remove the steering wheel from the shipping skid (Figure 3).

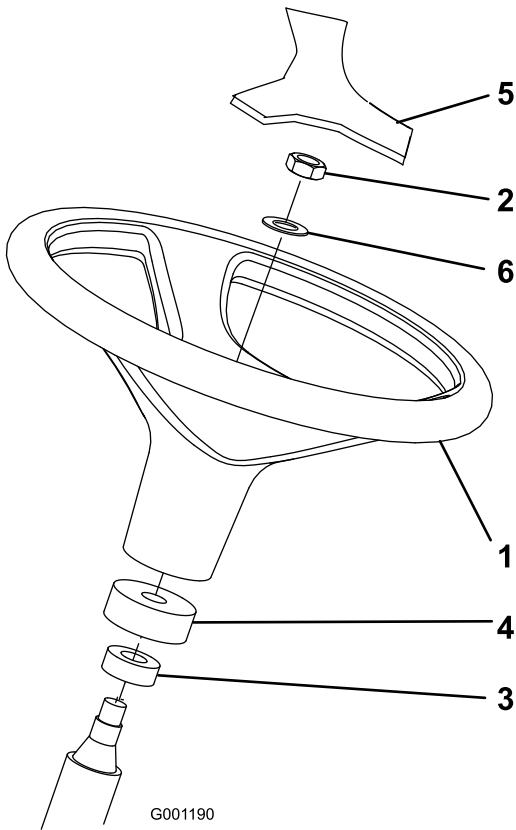


Figure 3

- | | |
|-------------------|----------------|
| 1. Steering wheel | 4. Foam collar |
| 2. Jam nut | 5. Cover |
| 3. Dust cover | 6. Washer |

2. Remove the jam nut and washer from the steering shaft.

Note: Ensure that the foam collar and dust cover remain on the steering shaft (Figure 3).

3. Slide the steering wheel and washer onto the steering shaft (Figure 3).
4. Secure the steering wheel to the shaft with the jam nut. Tighten the jam nut to 27-35 N·m (20-26 ft-lb).
5. Mount the cover to the steering wheel (Figure 3).

2

Installing the Hood Handle

Parts needed for this procedure:

1	Handle
2	Screws

Procedure

1. Remove and discard the 2 screws and nuts securing the hood cable bracket and to the underside of the hood (Figure 4).

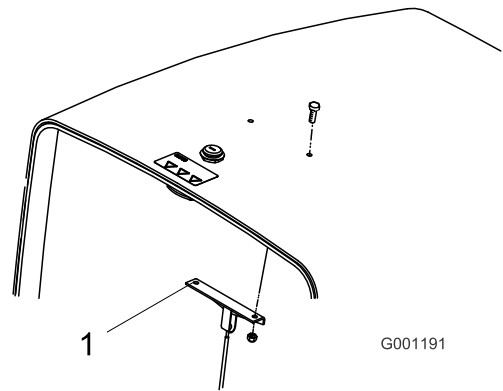


Figure 4

1. Hood cable bracket

2. Mount the handle and the cable bracket to the hood with 2 screws (Figure 5).

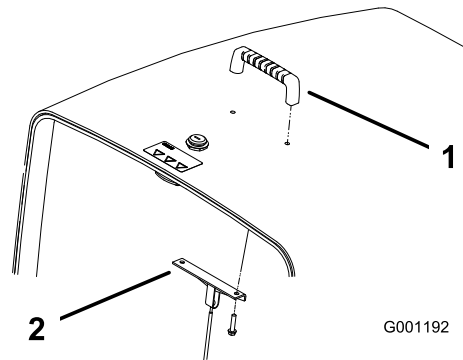


Figure 5

1. Handle
2. Hood-cable bracket

3

Installing the Seat

Parts needed for this procedure:

1	Seat—Model No. 30398 (optional kit)
1	Mechanical seat suspension kit—Model No. 30312 (optional kit) or Pneumatic seat suspension kit—Model No. 30313 (optional kit)

Procedure

The Groundsmaster 3280-D is shipped without the seat assembly. Obtain and install the optional seat (Model 30398) and the Mechanical Seat Suspension Kit (Model 30312) or the Pneumatic Seat Suspension Kit (Model 30313). Refer to the seat kit for the installation instructions.

Note: Obtain and install the Auxiliary Power Unit Kit (Model 30382) before installing a Pneumatic Suspension Seat Kit to the machine.

Note: Refer to [5 Installing the Manual Tube \(page 13\)](#) before mounting the seat to the seat suspension.

4

Installing the Seat Belt

Parts needed for this procedure:

1	Seat belt
2	Bolts (7/16 x 1 inch)
2	Lock washer (7/16 inch)
2	Flat washer (7/16 inch)

Procedure

Important: Mount the latch side of the belt to the right side of the seat.

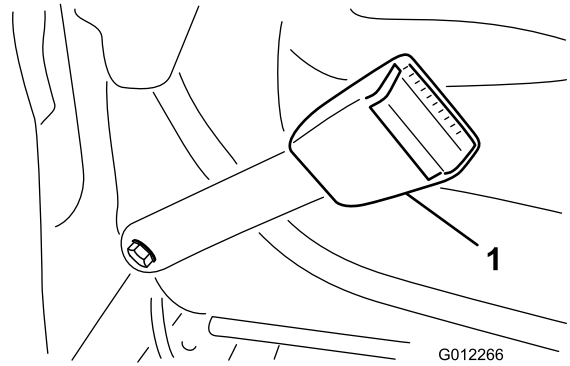


Figure 6

1. Seat-belt latch

1. Assemble end of each seat belt halves to the holes in the back of the seat with 2 bolts (7/16 x 1 inch), flat washers (7/16 inch), and lock washers (7/16 inch) ([Figure 6](#)).
2. Torque the bolts to 61 to 75 N·m (45 to 55 ft-lb).

5

Installing the Manual Tube

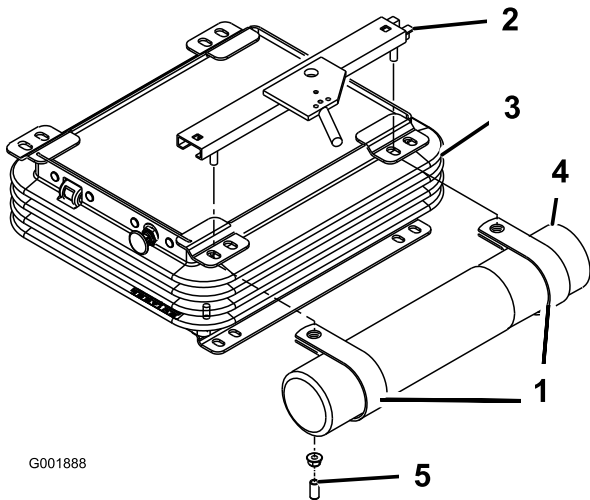
Parts needed for this procedure:

1	Manual tube
2	R-clamp

Procedure

1. Remove the manual tube and R-clamps secured to the seat plate.
Note: Discard the 2 mounting bolts and flat washers.
2. Remove the 2 nuts and vinyl caps (if previously installed) securing the upper seat bracket to the left side of the seat suspension ([Figure 7](#)).
3. Loosely mount the R-clamps to the seat bracket studs with the 2 nuts previously removed ([Figure 7](#)).

Note: Position the R-clamps under the seat-suspension tabs.



G001888

Figure 7

- | | |
|-----------------------|----------------|
| 1. R-clamps | 4. Manual tube |
| 2. Upper seat bracket | 5. Vinyl cap |
| 3. Seat suspension | |

4. Install the manual tube into the R-clamps and tighten the nuts (Figure 7).
5. Insert the vinyl caps onto the seat bracket studs.

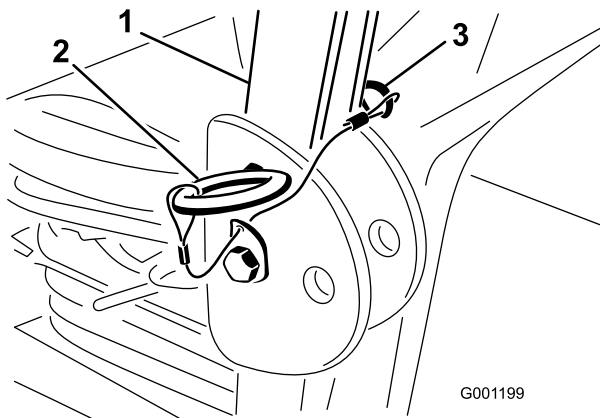
6

Adjusting the ROPS

No Parts Required

Procedure

1. Remove the hairpin cotter pins and remove the 2 pins from the roll bar (Figure 8).



G001199

Figure 8

- | | |
|-------------|-------------------|
| 1. Roll bar | 3. Hairpin cotter |
| 2. Pin | |

2. Raise the roll bar to the upright position and install the 2 pins and secure them with the hairpin cotteners(Figure 8).

Note: The roll bar is an integral and effective safety device. Keep the roll bar in the raised and locked position. Lower the roll bar temporarily only when absolutely necessary.

Important: Do not wear the seat belt when the roll bar is in the down position.

7

Activating and Charging the Battery

No Parts Required

Adding Electrolyte to the Battery

⚠ WARNING

Battery electrolyte contains sulfuric acid which is a deadly poison and causes severe burns.

- Do not drink electrolyte and avoid contact with skin, eyes, or clothing. Wear safety glasses to shield your eyes and rubber gloves to protect your hands.
- Fill the battery where clean water is always available for flushing the skin.

Important: Use only electrolyte with a specific gravity of 1.265 to initially fill battery.

1. Remove the battery from the machine.

Important: Do not add electrolyte while the battery is in the machine. You could spill it, causing corrosion.

2. Clean the top of the battery and remove the vent caps (Figure 9).

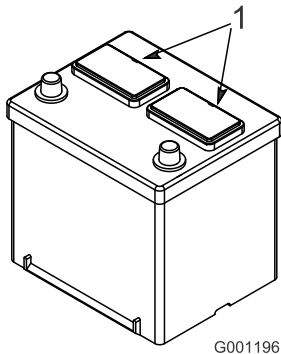


Figure 9

1. Vent caps

3. Carefully fill each cell with electrolyte until the plates are covered with about 6 mm (1/4 inch) of fluid (Figure 10).

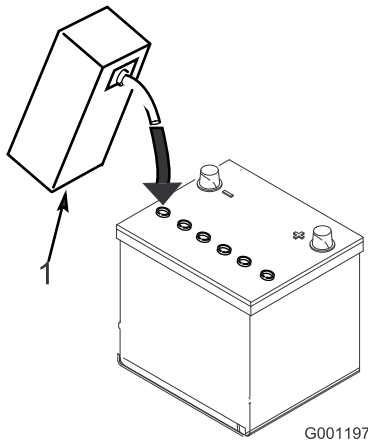


Figure 10

1. Electrolyte

4. Allow approximately 20 to 30 minutes for the electrolyte to soak into the plates.

Note: Refill as necessary to bring the electrolyte to within about 6 mm (1/4 inch) of the bottom of the fill well (Figure 10).

⚠ WARNING

Charging the battery produces gasses that can explode.

Never smoke near the battery and keep sparks and flames away from battery.

Charging the Battery

1. Connect a 3 to 4 amp battery charger to the battery posts. Charge the battery at a rate of 3 to 4 amps until the specific gravity of the electrolyte is 1.250 or higher and the temperature of the battery is at least 16°C (60°F), with all cells freely discharging gas.

2. When the battery is charged, disconnect the charger from the electrical outlet and then disconnect the charger from the battery posts.

Note: Incomplete charging may result in gassing of the battery and the overflow of battery acid, causing corrosive damage to the machine.

WARNING

CALIFORNIA Proposition 65 Warning

**Battery posts, terminals, and related accessories contain lead and lead compounds, chemicals known to the State of California to cause cancer and reproductive harm.
Wash hands after handling.**

Installing the Battery to the Machine

⚠ WARNING

Battery terminals or metal tools could short against metal tractor components causing sparks. Sparks can cause the battery gasses to explode, resulting in personal injury.

- When removing or installing the battery, do not allow the battery terminals to touch any metal parts of the tractor.
- Do not allow metal tools to short between the battery terminals and metal parts of the tractor.

1. Install the battery into the machine.
2. Install the positive-battery cable (red) to the positive (+) terminal, and slide the rubber boot over the positive terminal (Figure 11).

⚠ WARNING

Incorrect battery cable routing could damage the machine and cables causing sparks. Sparks can cause the battery gasses to explode, resulting in personal injury.

- Always disconnect the negative (black) battery cable before disconnecting the positive (red) cable.
- Always connect the positive (red) battery cable before connecting the negative (black) cable.

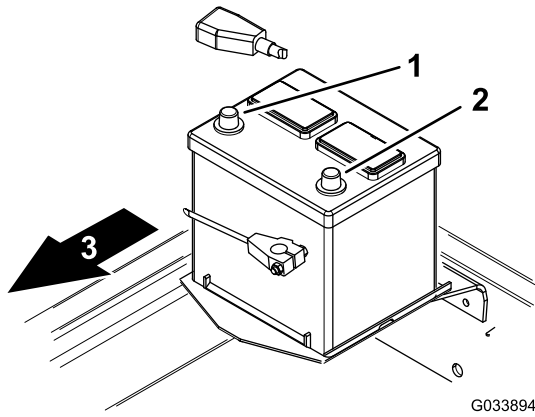


Figure 11

1. Positive (+)
2. Negative (-)
3. Front of the machine

⚠ WARNING

Connecting cables to the wrong post could damage the electrical system and result in personal injury.

Note: Ensure that the battery cables are routed away from any sharp edges or moving parts.

3. Install the negative-battery cable (black) to the negative (-) terminal of the battery (Figure 11).

8

Checking the Fluid Levels

No Parts Required

Procedure

- Check the engine-oil level before and after the engine is first started; refer to [Checking the Engine-Oil Level \(page 41\)](#).
- Check the level of the rear-axle lubricant level (Model 30345 only) before the engine is first started; refer to [Checking the Rear Axle Lubricant \(Model 30345 Only\) \(page 47\)](#).
- Check the level of the bidirectional clutch lubricant level (Model 30345 only) before the engine is first started; refer to [Checking the Bidirectional Clutch Lubricant \(Model 30345 Only\) \(page 49\)](#).
- Check the coolant level before the engine is first started; refer to [Checking the Cooling System and Coolant Level \(page 53\)](#).
- Check the level of the hydraulic fluid level before the engine is first started; refer to [Checking the Hydraulic System and Fluid Level \(page 60\)](#).

9

Checking the Air Pressure in the Tires

No Parts Required

Procedure

Tire air pressure specification (front and rear tires): 138 kPa (20 psi).

Check the air pressure in the front and rear tires before the engine is first started.

Note: The tires are overinflated for shipping; therefore, you must reduced air pressure in the tires.

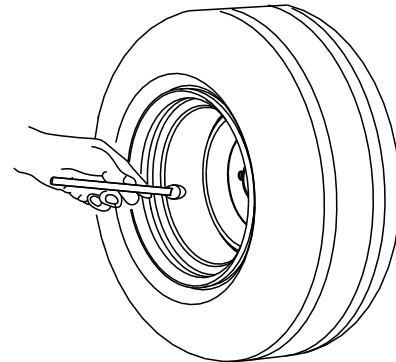


Figure 12

10

Installing the Lift-Lock Lever

Parts needed for this procedure:

1	Lift-lock lever
1	Flat washer
1	Spring washer
1	Spacer
1	Screw (1/4 x 1 inch)
1	Flange locknut (1/4 inch)

Procedure

For CE models only

1. Carefully locate and puncture the control-panel decal, in front of the lift switch, to expose the mounting hole for the lift-lock lever (Figure 13).

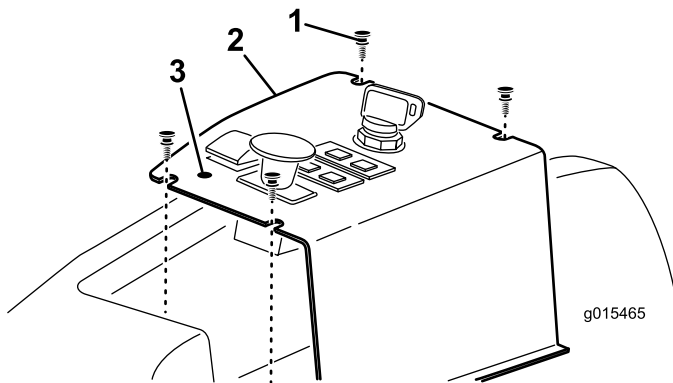


Figure 13

1. Mounting screw (4)
2. Control panel
3. Mounting hole

2. Remove the 4 screws securing the control panel to the machine (Figure 13).
3. Insert the lift-lock lever, spacer, wave washer, and flat washer onto the 1/4 x 1 inch pan-head screw positioning as shown in Figure 14.

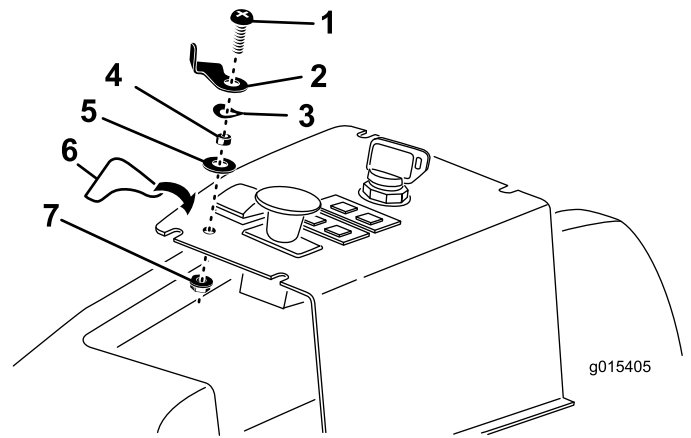


Figure 14

1. Screw
2. LIFT-LOCK lever
3. Spring washer
4. Spacer
5. Flat washer
6. Decal
7. Locknut

4. Insert the lift-lock lever assembly screw into the control-panel hole and secure it with a locknut. Position the lift-lock lever as shown in Figure 14.
5. Affix the lift-lock lever decal to the control panel as shown in Figure 14.
6. Secure the control panel to machine, with the screws previously removed.
7. To operate the lift-lock lever, rotate it under the front edge of the lift switch to prevent the switch from being activated.

11

Adjusting the Weight Transfer of the Mower Deck

No Parts Required

Procedure

You can change the hydraulic pressure used to transfer the weight of the mower deck to the traction unit by adjusting weight-transfer valve of the lift manifold. For best cutting performance, adjust the weight-transfer valve so that any bouncing motion of the mower deck is minimal over uneven turf, but also adjust the weight-transfer valve so that the mower deck does not ride heavily over flat terrain.

- To improve the contour-tracking performance of the cutting deck as you operate the machine over uneven turf, **decrease** the weight-transfer (hydraulic) pressure at the lift manifold.

Note: If the casters of the mower deck float above the ground, the hydraulic pressure of the weight transfer valve is set at too high.

- When you are cutting flat turf, when the cutting deck is scalping the grass, or if the quality of cut is uneven from side to side, **increase** the weight-transfer pressure at the lift manifold.

Note: Increasing weight-transfer pressure also transfers the weight from the casters of the cutting deck to the wheels of the traction unit, thereby improving the traction of the traction unit.

Adjust the weight-transfer pressure as follows:

1. Set the parking brake, set the PTO switch is in the OFF position, and lower the cutting deck.
2. Locate the lift manifold from under the machine, inboard the right frame channel, behind the front axle (Figure 15).

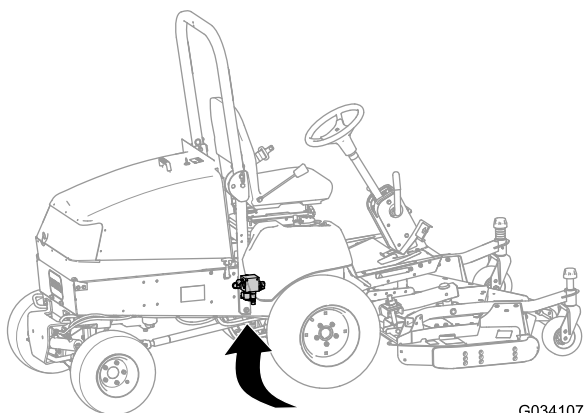


Figure 15

G034107

3. Connect a pressure gauge to the test port at the rear of the lift manifold (Figure 16).

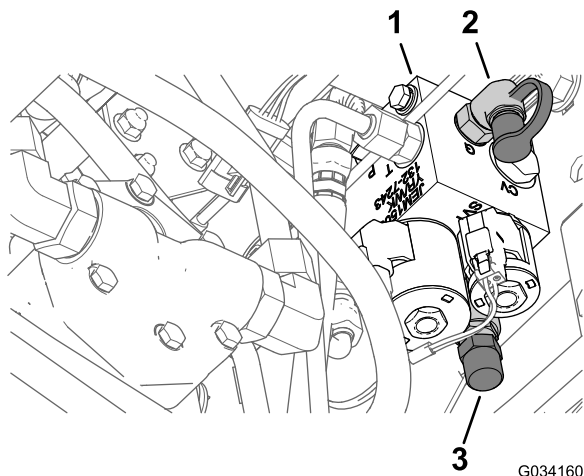


Figure 16

G034160

1. Lift manifold
2. Test port
3. Remove the cap from the weight-transfer spool

4. At the front of the lift manifold, remove the cap from the weight-transfer spool (Figure 16).
5. Loosen the jam nut at the bottom of the weight-transfer spool (Figure 16).
6. Start the engine and set the throttle to HIGH IDLE.
7. Use a hex-socket wrench to adjust the lift valve of the weight-transfer spool until the desired pressure is measured on the gauge; refer to the chart that follows for the recommended pressure setting for the cutting deck..
 - Rotate the adjusting screw clockwise to increase the pressure.
 - Rotate the adjusting screw counterclockwise to decrease the pressure.

Cutting Deck	Weight-Transfere Pressure
52 inch Side Discharge Deck (Model 30555)	827 kPa (120 psi)
60 inch Side Discharge Deck (Model 30366) or 62 in Base Deck (Model 30403) or 62 in Side Discharge Deck (Model 30551)	1620 kPa (235 psi)
72 inch Side Discharge Deck (Model 31336) or 72 in Base Deck (Model 30404) or 72 in Guardian Recycler Deck (Model 31335)	1930 kPa (280 psi)

8. Shut off the engine.
9. Tighten the jam nut at the bottom of the weight-transfer spool, and torque the nut to 13-16 N·m (10-12 ft-lb).
10. Remove the pressure gauge from the test port.

12

Installing the Rear Weights

Parts needed for this procedure:

-	Rear weight kit(s)—as needed
---	------------------------------

Procedure

This machine complies with EN ISO 5395:2013 and ANSI B71.4-2012 standards when equipped with rear weight—98 Kg (215 lb) of rear weight is installed at the factory. Use the table that follows to determine the combinations of additional weight required. Order parts from your local Authorized Toro Distributor.

Note: Before installing any third-party kits, contact your local Authorized Toro Distributor.

Weight Table (machines with 98 Kg (215 lb) of factory installed rear weight and machines with 23 Kg (50 lb) of factory installed rear weight)

Two-Wheel Drive Chart	Additional Rear Weight Required	Left Side Weight Required	Weight Part Number	Weight Description	Qty.
52 inch Side Discharge Deck	0 kg (0 lb)	0 kg (0 lb)	-	-	-
52 inch Side Discharge Deck with 15 cu. ft. Hopper	0 kg (0 lb)	66 kg (145 lb)*	*77-6700	34 kg (75 lb) Wheel Weight	1
			92-9670	Bracket Kit	1
			24-5780	Rear Weight Kit	1
60 inch Side Discharge Deck or 62 inch Base Deck (Model 30403 with Rear Discharge Kit or Guardian Kit)	16 kg (35 lb)**	0 kg (0 lb)	24-5790	Rear Weight, 16 kg (35 lb)	1
			60-9870	Bolt (1/2 x 4-1/2 inches)	2
			3253-7	Lock washer (1/2 inch)	2
			3217-9	Nut (1/2 inch)	2
60 inch Side Discharge Deck with 15 cu. ft. Hopper	16 kg (35 lb)	34 kg (75 lb)*	*77-6700	34 kg (75 lb) Wheel Weight	1
			24-5790	Rear Weight, 16 kg (35 lb)	1
			60-9870	Bolt (1/2 x 4-1/2 inches)	2
			3253-7	Lock washer (1/2 inch)	2
			3217-9	Nut (1/2 inch)	2
62 inch Side Discharge Deck	0 kg (0 lb)	0 kg (0 lb)	-	-	-
62 inch Side Discharge Deck with 15 cu. ft. Hopper	0 kg (0 lb)	39 kg (85 lb)	132-8149	23 kg (50 lb) Wheel Weight (add both weights to left front wheel)	1
			325-18	Bolt (for wheel weights)	4
			92-9670	Bracket Kit	1
			24-5790	Rear Weight, 16 kg (35 lbs)	1
			60-9870	Bolt (1/2 x 2-1/4 inches)	2
			3253-7	Lock washer (1/2 inch)	2
			3217-9	Nut (1/2 inch)	2
72 inch Side Discharge Deck or 72 inch Base Deck with Rear Discharge Kit or Guardian Kit or 72 inch Guardian Recycler Deck	32 kg (70 lb)	0 kg (0 lb)	24-5780	Rear Weight Kit	1

*Requires a 34 kg (75 lb) wheel weight on the left wheel—including with the 0.4 m³(15 ft³) hopper

**Requires a 16 kg (35 lb) rear weight when the universal sunshade is attached to the machine

13

Reading the Manuals and Viewing the Training Materials

Parts needed for this procedure:

2	<i>Operator's Manual</i>
1	<i>Engine Operator's Manual</i>
1	<i>Parts Catalog</i>
1	Operator Training Material
1	Pre-delivery Inspection Sheet
1	Certificate of compliance
1	Certificate of Quality
1	Roll pin
2	Bolt (5/16 x 1-3/4 inches)
2	Locknut (5/16 inch)
2	Cylinder pin
4	Cotter pin (3/16 x 1-1/2 inches)
2	Brake-return springs

Procedure

1. Read the manuals.
2. View the operator training materials.
3. Save the roll pin, bolts (5/16 x 1-3/4 inches), and locknuts (5/16 inch) to secure the universal shaft to an implement.
4. Save the cylinder pin and cotter pin (3/16 x 1-1/2 inches) to secure the deck lift arms to the lift cylinder.
5. Save the brake return springs to mount the deck lift arms.

Product Overview

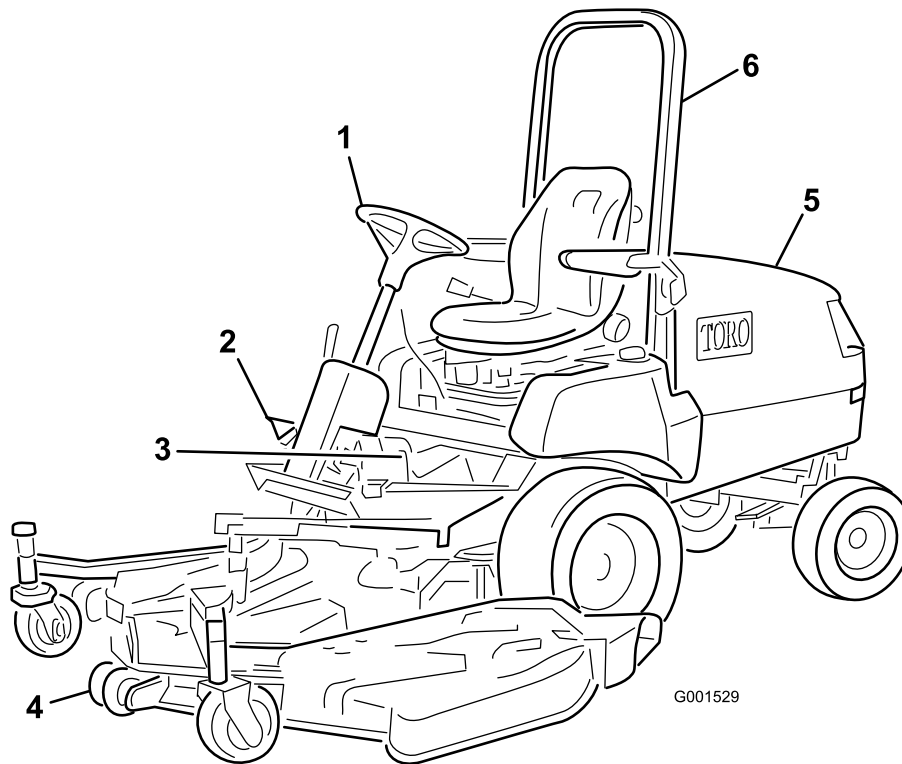


Figure 17

- | | | |
|-------------------|-----------------|--------------------------------------|
| 1. Steering wheel | 3. Brakes | 5. Hood/engine compartment |
| 2. Traction pedal | 4. Cutting unit | 6. ROPS (Rollover Protection System) |

Controls

Brakes

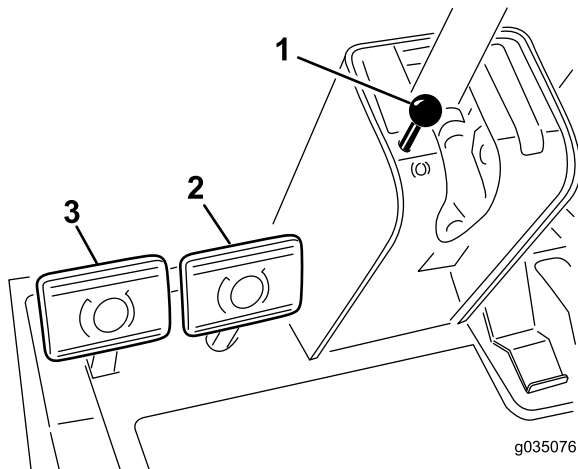


Figure 18

- | | |
|-----------------------|---------------------|
| 1. Parking-brake knob | 3. Left-brake pedal |
| 2. Right-brake pedal | |

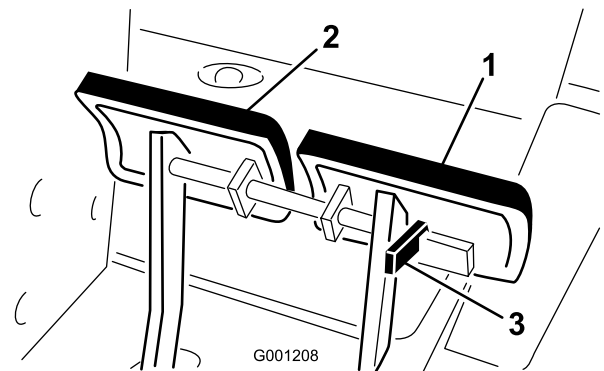


Figure 19

- | | |
|----------------------|-------------|
| 1. Left-brake pedal | 3. Lock arm |
| 2. Right-brake pedal | |

Service Brakes

The left and right brake pedals (Figure 18) are connected to the left and right front wheels. Since both brakes work independently of each other, you can use the brakes to turn sharply or to increase traction if 1 wheel tends to slip while operating on certain slope conditions. However, you can damage wet grass or soft turf whenever you use the brakes to turn sharply. To stop the machine quickly, press both

brake pedals together. Always lock the brakes together when transporting the machine (Figure 19).

Parking Brake

Whenever you stop the engine, set the parking brake to prevent the machine from accidentally moving. To set the parking brake, push the lock arm (Figure 19) on the left brake pedal so that it locks together with the right pedal. Then push down fully on both pedals, pull the parking brake knob out (Figure 18), and release the pedals. To release the parking brake, press both pedals until the parking-brake knob retracts. Before starting the engine, release the lock arm from the left brake pedal so that both pedals work independently with each front wheel.

Traction Pedal

The traction pedal (Figure 20) has 2 functions: To make the machine move forward and make it move rearward. Using the heel and toe of the right foot, press the top of the pedal to move forward and the bottom of the pedal to move rearward. Ground speed is proportionate to how far the pedal is pressed. For maximum ground speed, you must fully press traction pedal while throttle is in the FAST position. Maximum speed forward is approximately 16 kph (10 mph). To get maximum power under heavy load or when ascending a hill, have the throttle in the FAST position while pressing traction pedal slightly to keep the engine speed (rpm) high. When the engine speed begins to decrease, release the traction pedal slightly to allow the engine speed to increase.

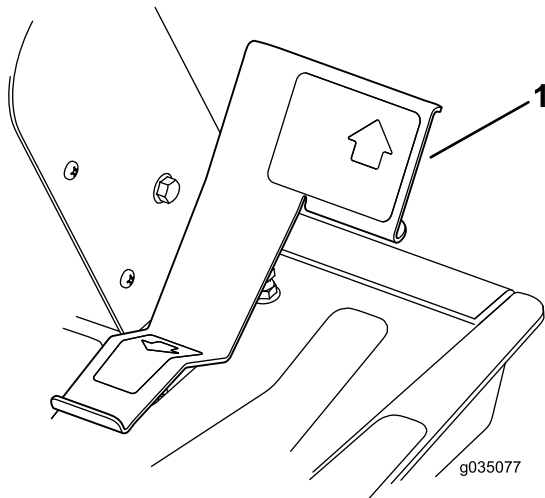


Figure 20

1. Traction pedal

Tilt-Steering Control

The tilt-steering control is a lever on the right side of the steering column (Figure 21). Pull the lever rearward to adjust the steering wheel to the desired fore or aft operating position and push the lever forward to lock the adjustment.

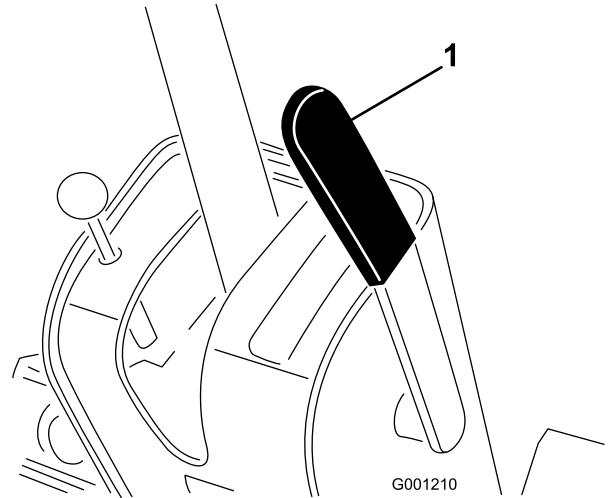


Figure 21

1. Tilt-steering control

⚠ CAUTION

Raising the deck can expose you to rotating blades, and contact with rotating blades can cause serious injury.

Never raise the deck while the blades are rotating.

Lift Switch

The lift switch (Figure 22) raises and lowers the deck. Pressing the switch forward, into the DETENT position, lowers the deck and allows the deck to float. Pressing the switch backward raises the deck. Raise the deck whenever you transport the machine between locations. Lower the deck whenever you are not using the machine.

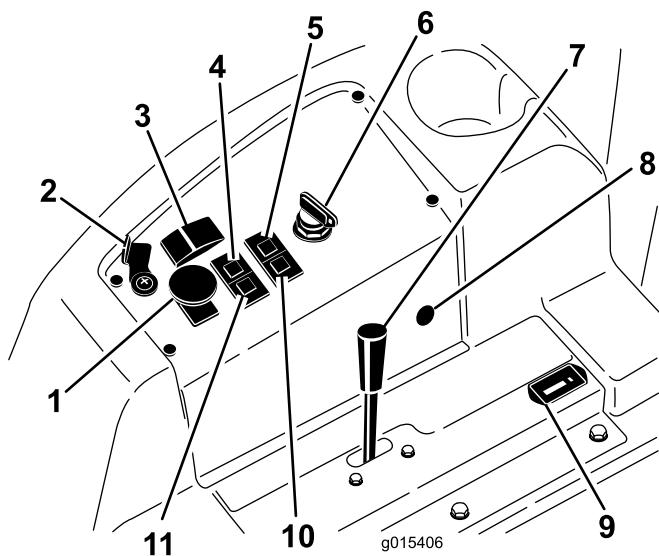


Figure 22

- | | |
|----------------------------------|-------------------------|
| 1. PTO switch | 7. Throttle lever |
| 2. Lift-lock lever (optional) | 8. 12V Power point |
| 3. Lift switch | 9. Hour meter |
| 4. Coolant-temperature indicator | 10. Glow-plug indicator |
| 5. Oil-pressure indicator | 11. Charge indicator |
| 6. Key switch | |

PTO Switch

Pull up the knob for the PTO switch to ON position to run the electric PTO clutch (Figure 22). Push down the knob to the OFF position to shut off the electric PTO clutch. The only time you should set the PTO switch to the ON position is when the PTO implement is in the operating position (down) and you are ready to begin operation.

Note: If you leave the operator's seat while the PTO switch is in the ON position, the machine will automatically shut off the engine; refer to [Resetting the PTO Function](#) (page 31).

Fuel Gauge

The fuel gauge (Figure 23) indicates the level of fuel remaining in the fuel tank.

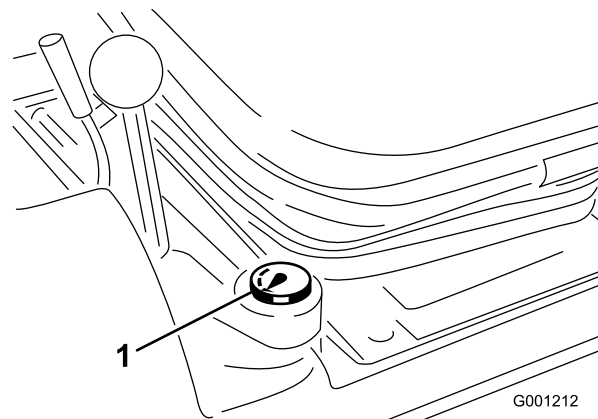


Figure 23

1. Fuel gauge

Key Switch

The key switch has 3 positions: OFF, ON/PREHEAT, and START. (Figure 22).

Throttle lever

Use the throttle lever (Figure 22) to control the engine speed. Moving the throttle lever forward toward the FAST position increases the engine speed. Moving the throttle lever rearward toward the SLOW position decreases the engine speed. The throttle lever controls the speed of the blades and, in conjunction with traction pedal, controls ground speed of the machine. The detent is located at the HIGH-IDLE position.

Hour Meter

The hour meter (Figure 22) records and displays accumulated hours of engine operation.

Engine Coolant Temperature-Warning Light

If the coolant temperature rises above normal operating limit, the engine coolant temperature-warning light (Figure 22) will illuminate and the machine will stop the operation of the implement. If the coolant temperature rises another 7°C (20°F) after the temperature-warning light illuminates, the engine will shut off. Operate the engine at low idle to allow the coolant to return to the normal-operating range. If the warning light continues to illuminate, shut off the engine and determine the cause of the high coolant temperature.

Glow-Plug Indicator

When glow-plug indicator is illuminates, it indicates that the glow plugs are energized (Figure 22).

Charge Indicator

The charge indicator illuminates if electrical charging system is operating above or below the normal operating range (Figure 22). Check and/or repair the electrical charging system.

Oil-Pressure-Warning Light

The oil-pressure-warning light (Figure 22) illuminates if the oil pressure in engine drops below a safe-operating level. If the oil-pressure-warning light ever illuminates, shut off the engine and determine the cause of the low oil pressure condition. Repair the engine-oil system before starting the engine again.

Lift-Lock Lever

Use the lift-lock lever to secure the lift switch (Figure 22), to the RAISE-DECK position, when performing maintenance on the deck or when transporting between mowing locations.

Specifications

Note: Specifications and design are subject to change without notice.

Length	208 cm (82 inches)
Width (Rear wheels)	119 cm (47 inches)
Height without ROPS	127 cm (50 inches)
Height with ROPS	196 cm (77 inches)
Net Weight (Model 30344)	635 kg (1,400 lb)
Net Weight (Model 30345)	794 kg (1,751 lb)

Attachments/Accessories

A selection of Toro approved attachments and accessories is available for use with the machine to enhance and expand its capabilities. Contact your Authorized Service Dealer or Distributor or go to www.Toro.com for a list of all approved attachments and accessories.

Operation

Before Operation

Before Operation Safety

⚠ CAUTION

This machine produces sound levels in excess of 85 dBA at the operators ear and can cause hearing loss through extended periods of exposure.

Wear hearing protection when operating this machine.

⚠ CAUTION

If the machine does not have adequate rear weight, the rear wheels may come off the ground, causing you to lose control of the machine.

- Add the necessary amount of rear weight to prevent the rear wheels from leaving the ground.
- Do not stop suddenly while you raise the deck or implement.
- Do not travel downhill with the deck or implement raised.

Important: Refer to the 2 weight tables in [.12 Installing the Rear Weights \(page 19\)](#) for more information regarding additional weight required for your machine.

General Safety

- Never allow children or untrained people to operate or service the machine. Local regulations may restrict the age of the operator. The owner is responsible for training all operators and mechanics.
- Become familiar with the safe operation of the equipment, operator controls, and safety signs. Know how to stop the machine and engine quickly.
- Check that all safety devices are attached and functioning properly. This includes, but is not limited to, operator-presence controls; safety switches and shields; the rollover protection system (ROPS); attachments; and brakes. Do not operate the machine unless all safety devices are in position and functioning as intended by the manufacturer.
- Always inspect the machine to ensure that the blades, blade bolts, and cutting assembly are not worn or damaged. Replace worn or damaged blades and bolts in sets to preserve balance.

- Inspect the area where you will use the machine and remove all objects that the machine could potentially throw.
- Evaluate the terrain to determine the appropriate equipment and any attachments or accessories required to operate the machine properly and safely.

- If you spill fuel on your clothing, change your clothing immediately.
- Fill the fuel tank until the fuel level is 25 mm (1 inch) below the bottom of the filler neck. Do not overfill the fuel tank. Replace the fuel-tank cap and tighten it securely.

Fuel Safety

▲ DANGER

In certain conditions, fuel is extremely flammable and highly explosive. A fire or explosion from fuel can burn you and others and can damage property.

- Fill the fuel tank outdoors, in an open area, when the engine is cold. Wipe up any fuel that spills.
- Never fill the fuel tank inside an enclosed trailer.
- Never smoke when handling fuel, and stay away from an open flame or where fuel fumes may be ignited by a spark.
- Store fuel in an approved container and keep it out of the reach of children. Never buy more than a 180-day supply of fuel.
- Do not operate the machine without the entire exhaust system in place and in proper working condition.

▲ WARNING

Fuel is harmful or fatal if swallowed. Long-term exposure to vapors can cause serious injury and illness.

- Avoid prolonged breathing of vapors.
- Keep your hands and face away from the nozzle and the fuel-tank opening.
- Keep fuel away from your eyes and skin.
- Use only an approved fuel container.
- Never remove the fuel cap or add fuel to the fuel tank while the engine is running.
- Never fill containers inside a vehicle or on a truck or trailer bed with a plastic liner. Always place containers on the ground and away from your vehicle before filling.
- Remove the equipment from the truck or trailer and add fuel to it while it is on the ground. If this is not possible, then add fuel using a portable container rather than from a fuel-dispenser nozzle.
- Keep the fuel-dispenser nozzle in contact with the rim of the fuel tank or container opening at all times until fueling is complete. Do not use a nozzle lock-open device.

Accessing the Machine

Opening the Hood

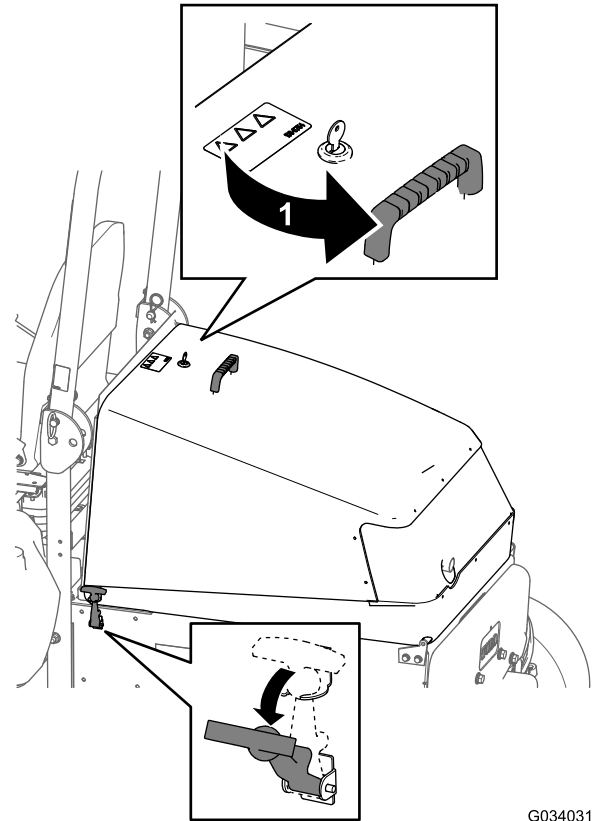


Figure 24

1. Unlock

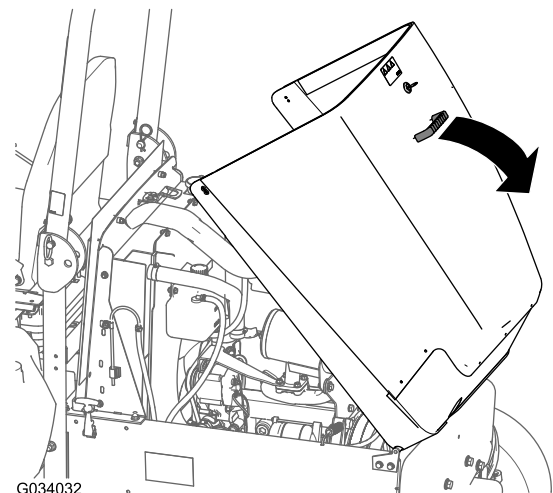
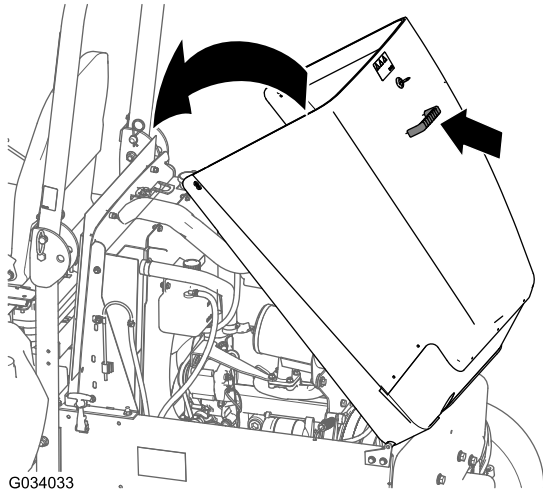


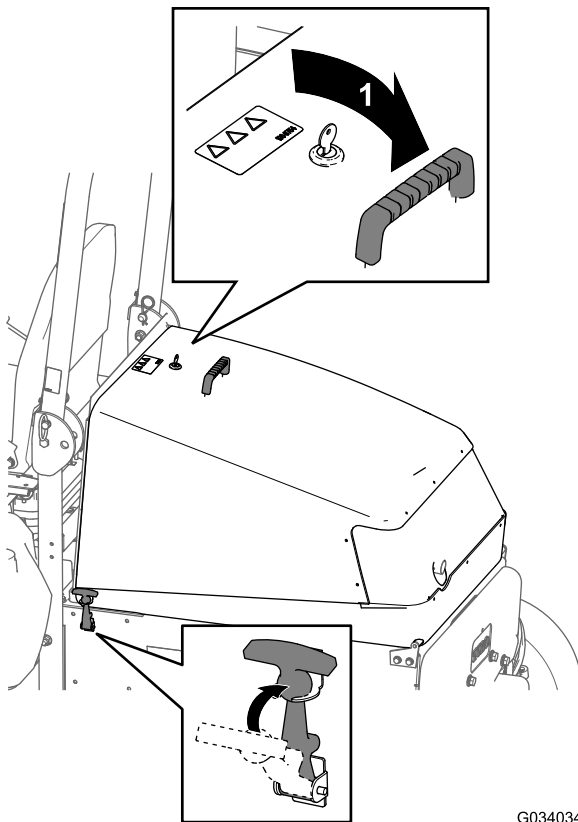
Figure 25

Closing the Hood



G034033

Figure 26



G034034

Figure 27

1. Lock

Checking the Machine Daily

Check the following machine systems each day before operating the machine:

- **Air Cleaner Indicator;** refer to [Checking the Air Cleaner Indicator](#) (page 40)
- **Engine oil;** refer to [Checking the Engine-Oil Level](#) (page 41)
- **Coolant system;** refer to [Checking the Cooling System and Coolant Level](#) (page 53)
- **Hood screen and radiator;** [Checking the Hood Screen and Radiator for Debris](#) (page 54)
- **Hood screen and radiator;** refer to [Checking the Hood Screen and Radiator for Debris](#) (page 54)
- **Hydraulic system;** refer to [Checking the Hydraulic System and Fluid Level](#) (page 60)

Checking the Air Pressure in the Tires

Service Interval: Before each use or daily

Tire air pressure specification (front and rear tires): 138 kPa (20 psi).

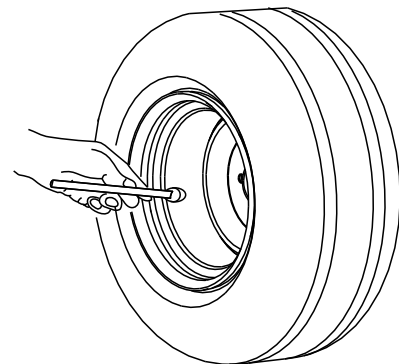
⚠ DANGER

Low tire pressure decreases machine side-hill stability. This could cause a rollover, which may result in personal injury or death.

Do not underinflate the tires.

Check the air pressure in the front and rear tires. Add or remove air as needed to set the air pressure in the tires to the tire air pressure specification.

Important: Maintain pressure in all tires to ensure a good quality of cut and proper machine performance. Check the air pressure in all the tires before operating the machine.



G001055

Figure 28

Checking the Interlock System

Service Interval: Before each use or daily

The purpose of the safety interlock system is to prevent the engine from cranking or starting unless the traction pedal is in neutral and the PTO switch is in the OFF position. In addition, the engine should stop when

- the PTO switch is set to the ON position and the operator off the seat;
- the traction pedal is pressed with the operator off the seat;
- the traction pedal pressed with the parking brake set.

⚠ CAUTION

If the safety-interlock switches are disconnected or damaged, the machine could operate unexpectedly, causing personal injury.

- **Do not tamper with the interlock switches.**
 - **Check the operation of the interlock switches daily and replace any damaged switches before operating the machine.**
1. Move PTO switch to OFF position and remove foot from traction pedal so it is fully released.
 2. Rotate the key switch to the START position. If the engine cranks, proceed to step 3.
Note: If engine does not crank, there may be a malfunction in the safety-interlock system.
 3. Raise off the seat and set the PTO switch to the ON position while the engine is running. The engine should stop within 2 seconds. If engine shuts off, proceed to step 4.
Important: If engine does not stop, there is a malfunction in the safety-interlock system.
 4. Raise off the seat and press the traction pedal while engine is running and the PTO switch is set to the OFF position. The engine should shut off within 2 seconds. If engine shuts off, proceed to step 5.
Important: If engine does not shut off, there is a malfunction in the safety-interlock system.
 5. Set the parking brake. Press in the traction pedal while engine is running and the PTO switch is set to the ON position. The engine should stop within 2 seconds. If engine shuts off, the switch is operating correctly; the interlock system is ready for machine operation.
Important: If engine does not stop, there is a malfunction in the safety-interlock system.

Adding Fuel to the Machine

Fuel tank capacity: 72 L (12.8 US gallons)

Fuel Specification:

Use only clean, fresh diesel fuel or biodiesel fuels with low (<500 ppm) or ultra low (<15 ppm) sulfur content. The minimum cetane rating should be 40. Purchase fuel in quantities that can be used within 180 days to ensure fuel freshness.

Use summer-grade diesel fuel (No. 2-D) at temperatures above -7°C (20°F) and winter grade (No. 1-D or No. 1-D/2-D blend) below that temperature. Use of winter-grade fuel at lower temperatures provides lower flash point and cold flow characteristics which will ease starting and reduce fuel filter plugging.

Important: Do not use kerosene or gasoline instead of diesel fuel. Failure to observe this caution will damage the engine.

Note: Use of summer-grade fuel above -7°C (20°F) will contribute toward longer fuel pump life and increased power compared to winter-grade fuel.

Biodiesel Ready

This machine can also use a biodiesel blended fuel of up to B20 (20% biodiesel, 80% petrodiesel). The petrodiesel portion should be low or ultra low sulfur. Observe the following precautions:

- The biodiesel portion of the fuel must meet specification ASTM D6751 or EN14214.
- The blended fuel composition should meet ASTM D975 or EN590.
- Painted surfaces may be damaged by biodiesel blends.
- Use B5 (biodiesel content of 5%) or lesser blends in cold weather.
- Monitor seals, hoses, gaskets in contact with fuel as they may be degraded over time.
- Fuel filter plugging may be expected for a time after converting to biodiesel blends.
- Contact your distributor if you wish for more information on biodiesel.

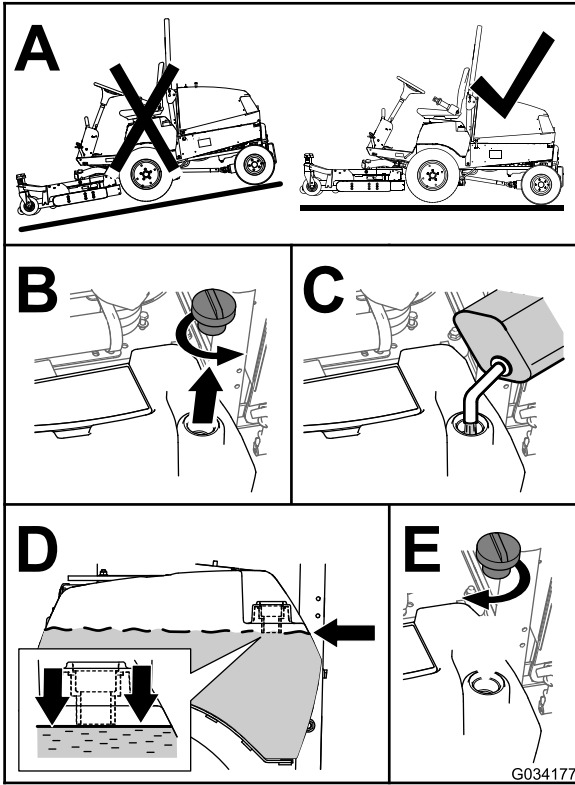


Figure 29

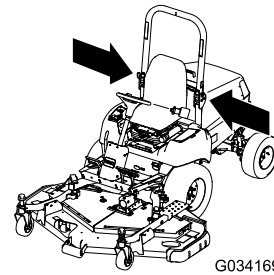
Note: If possible, fill the fuel tank after each use; this minimizes possible buildup of condensation inside the fuel tank.

Adjusting the ROPS

Lowering the ROPS

Important: Lower the roll bar only when absolutely necessary.

Important: Ensure that the seat is secured with the seat latch.



G034169

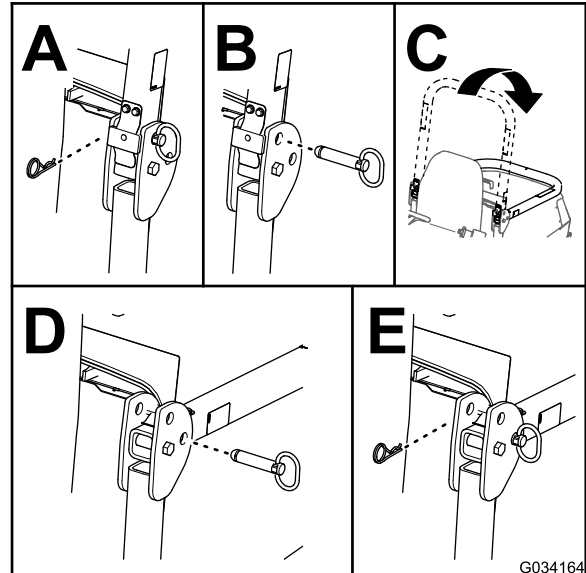


Figure 30

Raising the ROPS

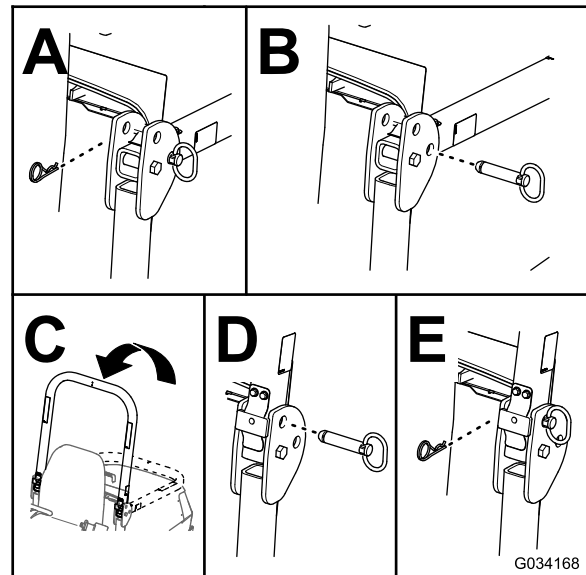


Figure 31

Adjusting the Tilt-Steering Control

1. Remove the knob from the parking brake and the screws from the steering-column cover (Figure 32).

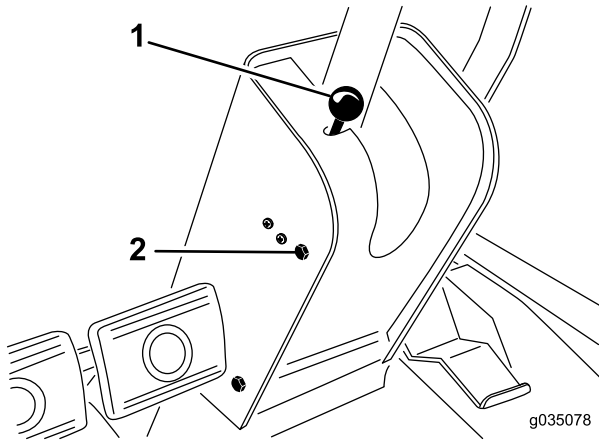


Figure 32

1. Parking-brake knob
2. Mounting screw (4)

2. Slide the cover up the steering shaft to expose the pivot bracket (Figure 33).

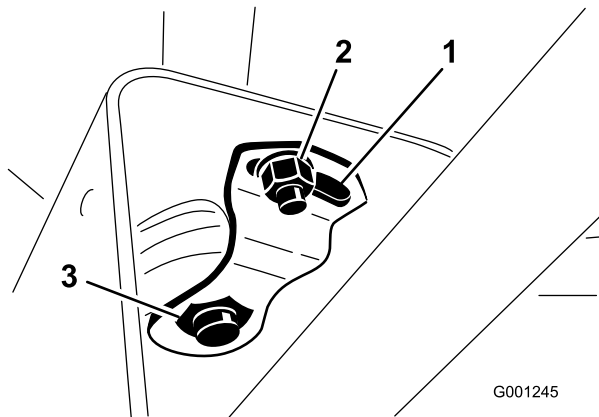


Figure 33

1. Pivot plate
2. Small nut
3. Large nut

3. Loosen the small nut and rotate the pivot bracket until it tightens the large nut below it (Figure 33).
4. Tighten the small nut.
5. Install the steering-column cover and the parking-brake knob.

During Operation

General Safety

- The owner/user can prevent and is responsible for accidents that may cause injuries to himself/herself and others and for damage to property.
- Wear appropriate clothing, including eye protection; slip-resistant, substantial footwear; and hearing protection. Wearing safety shoes and long pants is advisable and required by some local ordinances and insurance regulations. Tie back long hair, secure loose clothing, and do not wear jewelry.
- Ensure that all drives are in the NEUTRAL position, the parking brake is engaged, and you are in the operating position before you start the engine.
- Keep all body parts, including hands and feet, away from all moving parts.
- Do not operate the machine while ill, tired, or under the influence of alcohol or drugs.
- Keep the direction of the mower discharge away from people and pets.
- Do not mow in reverse unless it is absolutely necessary. If you must mow in reverse, look behind and down for small children before and while moving the machine in reverse. Stay alert and stop the machine if a child enters the area.
- Use extreme care when approaching blind corners, shrubs, trees, or other objects that may block your view.
- Do not mow near drop-offs, ditches, or embankments. The machine could suddenly roll over if a wheel goes over the edge or if the edge caves in.
- Never carry passengers on the machine.
- Operate the machine only in good visibility and appropriate weather conditions. Do not operate the machine when there is the risk of lighting.
- Do not mow on wet grass. Reduced traction could cause the machine to slide.
- Never raise the mower deck with the blades running.
- Stop the machine and inspect the blades after striking an object or if there is an abnormal vibration in the machine. Make all necessary repairs before resuming operation.
- Stop the blades whenever you are not mowing, especially while crossing loose terrain such as gravel.
- Slow down and use caution when making turns and crossing roads and sidewalks with the machine. Always yield the right-of-way.
- When the optional road light kit is installed, turn on the flashing warning lights on the machine whenever you travel on a public road, except where such use is prohibited by law.
- Disengage the drive to the attachment and shut off the engine before adding fuel and adjusting the height of cut.

- Reduce the throttle setting before shutting off the engine and, if the engine has a fuel-shutoff valve, shut off the fuel when you have finished operating the machine.
- Never run an engine in an area where exhaust gases are enclosed.
- Never leave a running engine unattended.
- Before leaving the operating position, do the following:
 - Stop the machine on level ground.
 - Disengage the power take-off and lower the attachments.
 - Set the parking brake.
 - Shut off the engine and remove the key.
 - Wait for all moving parts to stop.
- Do not change the governor settings on or overspeed the engine. Operating the engine at excessive speed may increase the potential for personal injury.
- Do not use the machine as a towing vehicle.
- Use accessories and attachments approved by The Toro® Company only.

Rollover Protection System (ROPS) Safety

⚠ WARNING

There is no rollover protection when the roll bar is in the down position.

- **Do not operate the machine on uneven ground or on a hill side with the rollover protection in the down position.**
- **Always use the seat belt when the roll bar is in the raised and locked position.**
- **Do not wear the seat belt when the roll bar is in the down position.**
- **Check carefully for overhead clearances (i.e., branches, doorways, electrical wires) before driving under any objects and do not contact them.**
- **Lower the roll bar only when absolutely necessary.**
- **Raise the roll bar as soon as clearance permits.**
- **Drive slowly and carefully.**
- **Do not** remove the ROPS from the machine.
- Ensure that the seat belt is attached and that you can release it quickly in the event of an emergency.
- Keep the ROPS in safe operating condition by thoroughly inspecting it periodically for damage and keeping all the mounting fasteners tight.

- Replace a damaged ROPS. Do not repair or modify it.
- Any alterations to a ROPS must be approved by The Toro® Company.

Slope Safety

- Slow down the machine and use extra care on hillsides. Travel in the recommended direction on hillsides. Turf conditions can affect the stability of the machine.
- Avoid starting, stopping, or turning the machine on a slope. If the tires lose traction, disengage the blade(s) and proceed slowly straight down the slope.
- Do not turn the machine sharply. Use care when reversing the machine.
- When operating the machine on a slope, always keep all cutting units lowered.
- Avoid turning the machine on slopes. If you must turn, turn slowly and gradually downhill, if possible.
- Use extra care while operating the machine with attachments; they can affect the stability of the machine.

Starting and Shutting Off the Engine

Important: You might need to bleed the fuel system in any of the following situations: initially starting up a new machine, the engine no longer running due to lack of fuel, or fuel system components replaced or serviced.

1. Raise the ROPS and lock it into place.
2. Sit on the seat and fasten the seat belt.
3. Ensure that the parking brake is set and the PTO switch is in the OFF position.
4. Remove your foot from traction pedal and ensure that it is in neutral.
5. Move the throttle control to the FAST position.
6. Rotate the key switch to the ON/PREHEAT position.

Note: An automatic timer then controls the preheat for 6 seconds.

7. After preheating, rotate the key switch to the Start position, **crank the engine for no longer than 15 seconds**, and release the key when the engine starts.

Note: If additional preheating is required, turn the key to the OFF position, then to the ON/PREHEAT position. Repeat this process as required.

8. Move the throttle to idle speed or partial throttle and run the engine until it warms up.

Important: When you start the engine for the first time; or after you change the engine oil or overhaul the engine, transmission, or axle; operate the machine in forward and reverse for 1 to 2 minutes. Also, operate the lift lever and PTO lever to ensure

that all parts are properly operating. Turn the power-steering wheel to the left and right to check the steering response. Then shut the engine off, check the fluid levels, and check for oil leaks, loose parts, and any other malfunctions.

⚠ CAUTION

Shut the engine off and wait for all moving parts to stop before checking for oil leaks, loose parts, or other malfunctions.

9. To shut off the engine, move the throttle control backward to the SLOW position, move the PTO switch to the OFF position and rotate key switch to the OFF position. Remove key from the switch to prevent accidental starting.

Resetting the PTO Function

Note: If you leave the operator's seat while the PTO switch is in the ON position, the machine will automatically shut off the engine.

Perform the following to reset the PTO function:

1. Push down the PTO switch knob; refer to [Figure 22](#) and [PTO Switch \(page 23\)](#).
2. Start the engine; refer to [Starting and Shutting Off the Engine \(page 30\)](#).
3. Pull up the PTO switch knob; refer to [Figure 22](#) and [PTO Switch \(page 23\)](#).

Bleeding the Fuel-Injection Pump

1. Park the machine on a level surface.
2. Set the parking brake.
3. Ensure that the fuel tank is at least half full.
4. Unlatch and raise the hood.
5. Open the air-bleed screw on the fuel-injection pump ([Figure 34](#)).

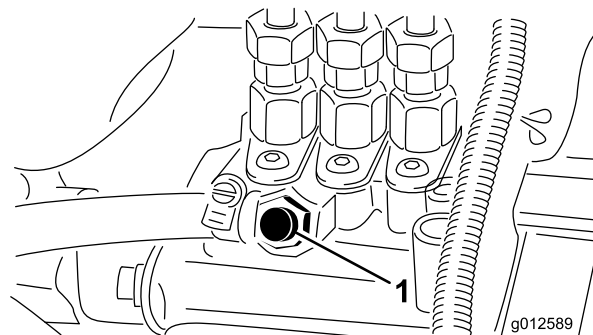


Figure 34

1. Air-bleed screw
-
6. Rotate the key switch to the ON position.
The electric fuel pump will begin operation, thereby forcing air out around the air-bleed screw.
 7. Leave the key switch in the ON position until a solid stream of fuel flows out around the screw.
 8. Tighten the screw and rotate key switch to the OFF position.
Note: The engine should start after you perform this procedure. However, if engine does not start, air may be trapped between the injection pump and the injectors; refer to [Bleeding the Air from the Fuel-Injector Tubing \(page 43\)](#).
 9. Wipe clean any fuel that has accumulated around the injection pump.

Operating Tips

- Practice driving before operating the machine, because it has a hydrostatic transmission and its characteristics are different than some turf-maintenance machines. When operating the machine and the deck, consider the transmission, engine speed, load on the cutting blades, and the importance of the brakes.
- To maintain enough power for the machine and deck while mowing, regulate the traction pedal to keep the engine speed (rpm) high and constant. A good rule to follow is to decrease the ground speed as the load on the cutting blades increases; and to increase ground speed as the load on the blades decreases. This allows the engine, working with the transmission, to sense the proper ground speed while maintaining a high blade-tip speed necessary for good quality-of-cut. Therefore, allow the traction pedal to move upward as the engine speed decreases, and press pedal slowly as the speed increases. When driving from a work area to another (with no load and the deck raised) have throttle in the FAST position and press the traction pedal slowly but fully to attain the maximum ground speed.
- Lock the brake pedals together before transporting the machine.
- Another characteristic to consider is the operation of the brakes. You can use the brakes to assist in turning the machine; however, use them carefully, especially on soft or wet grass, because the turf may be torn accidentally. You can also use the brakes to control the direction of the deck when trimming along fences or similar objects. The other benefit of using the brakes is to maintain traction. For example; in some slope conditions, the uphill wheel slips and loses traction. If this happens, press the uphill brake pedal gradually and intermittently until the uphill wheel stops slipping; thus, increasing traction on the downhill wheel. If independent braking is not desired, set the lever on left-brake pedal with right pedal. This provides simultaneous braking at both wheels.
- Before shutting off the engine, move all controls to the NEUTRAL position and move the throttle to the SLOW position. Rotate the key switch to the OFF position to stop the engine.
- The engine will not run when the engine coolant is in over temperature condition, let the engine and cooling system cool, and check the cooling system; refer to [Checking the Cooling System and Coolant Level \(page 53\)](#).

After Operation

After Operation Safety

General Safety

- Clean grass and debris from the mower deck, drives, mufflers, and engine to help prevent fires. Clean up oil or fuel spills.
- Shut off the fuel while storing or transporting the machine, if applicable.
- Disengage the drive to the attachment whenever you are transporting or not using the machine.
- Allow the engine to cool before storing the machine in any enclosure.
- Never store the machine or fuel container where there is an open flame, spark, or pilot light, such as on a water heater or on other appliances.

Pushing or Towing the Machine

In an emergency, the machine can be pushed or towed for a very short distance. However, Toro does not recommend this as standard procedure.

Important: Pushing or towing the machine faster than 3 to 5 km/h (2 to 3 mph) may damage the transmission. If you must move the machine a considerable distance, transport it on a truck or trailer. Whenever you push or tow the machine, the bypass valve must be open.

Opening the Bypass Valve of the Hydraulic Pump To Push or Tow the Machine

1. Remove the seat and seat plate; refer to [Removing the Seat and Seat Plate \(page 37\)](#).
2. Locate the control knob for the bypass valve at the left side of the hydraulic pump ([Figure 35](#)).

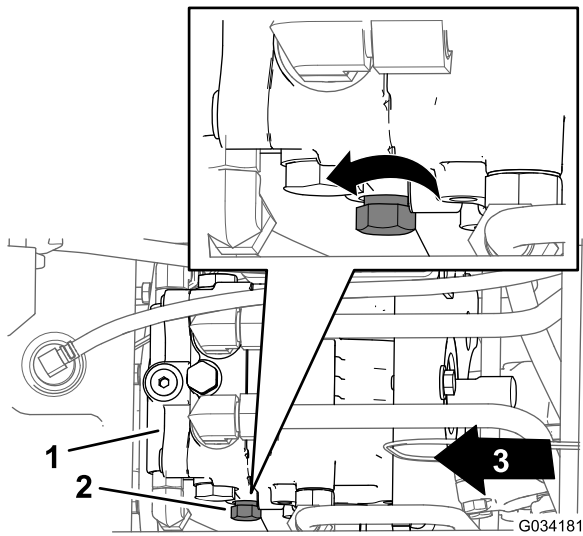


Figure 35

1. Hydraulic pump
2. Control knob (bypass valve)
3. Front of the machine

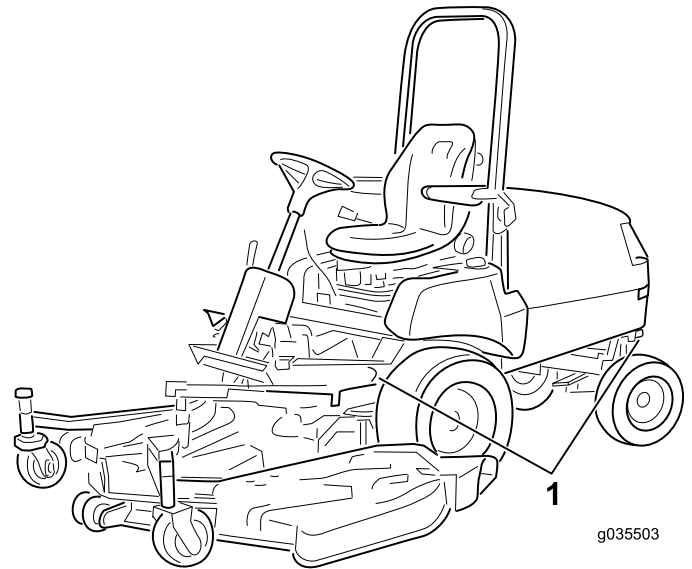


Figure 36

1. Tie-down loops

3. Rotate the control knob 3 turns counterclockwise ([Figure 35](#)).

Important: Do not rotate the control knob more than 3 turns.

Closing the Bypass Valve of the Hydraulic Pump To Operate the Machine

1. Locate the control knob for the bypass valve at the left side of the hydraulic pump ([Figure 35](#)).
2. Rotate the control knob ([Figure 35](#)) clockwise until you feel resistance (the bypass valve is closed).
3. Installing the seat and seat plate; refer to [Installing the Seat and Seat Plate](#) (page 37).

Hauling the Machine

- Use care when loading or unloading the machine into a trailer or a truck.
- Use full-width ramps for loading the machine into a trailer or a truck.
- Tie the machine down securely using straps, chains, cable, or ropes. Both front and rear straps should be directed down and outward from the machine.

Maintenance

Note: Looking for an *Electrical Schematic* or *Hydraulic Schematic* for your machine? Download a free copy of the schematic by visiting www.Toro.com and searching for your machine from the Manuals link on the home page.

Recommended Maintenance Schedule(s)

Maintenance Service Interval	Maintenance Procedure
After the first hour	<ul style="list-style-type: none"> • Torque the wheel-lug nuts.
After the first 10 hours	<ul style="list-style-type: none"> • Torque the wheel-lug nuts. • Check and adjust the service brakes. • Check the tension on the alternator belt. • Check the tension on the PTO belt. • Change the hydraulic fluid filter.
After the first 50 hours	<ul style="list-style-type: none"> • Change the engine oil and filter. • Check and adjust the service brakes. • Check the tension on the PTO belt.
Before each use or daily	<ul style="list-style-type: none"> • Check the air pressure in the tires. • Check the Interlock System. • Check the air cleaner indicator. • Check the engine-oil level. • Check the cooling system and the coolant level. • Check the hood screen and radiator for debris. • Check the hydraulic system and fluid level.
Every 50 hours	<ul style="list-style-type: none"> • Grease the bearings and bushings. • Inspect the air-cleaner element. • Check the battery cable connections. • Check the battery electrolyte level when in operation. • Lubricate the brake cables.
Every 150 hours	<ul style="list-style-type: none"> • Change the engine oil and filter.
Every 200 hours	<ul style="list-style-type: none"> • Torque the wheel-lug nuts. • Check the rear axle lubricant (Model 30345 only). • Check the bidirectional clutch lubricant (Model 30345 only). • Check the rear wheel alignment. • Torque the bolts for the steering-cylinder mount (Model 30345 only). • Inspect the cooling-system hoses. • Check the condition of the alternator belt. • Check the tension on the alternator belt. • Check the condition of and tension on the PTO belt. • Adjust the PTO clutch gap. • Change the hydraulic fluid filter.
Every 400 hours	<ul style="list-style-type: none"> • Grease the rear-axle bearings • Replace the primary air-cleaner element(s) (earlier if the air cleaner indicator shows red, and more frequently in extremely dirty or dusty conditions). Replace the safety filter after every 3 primary air-cleaner element replacements. • Replace the fuel-filter canister. • Drain and clean the fuel tank • Inspect the fuel lines and connections. • Change the rear-axle lubricant (Model 30345 only). • Change the bidirectional-clutch lubricant (Model 30345 only).
Every 1,500 hours	<ul style="list-style-type: none"> • Replace any moving hoses. • Flush and replace the cooling-system fluid. • Replace the hydraulic fluid.
Monthly	<ul style="list-style-type: none"> • Check the battery electrolyte level when in storage.

Daily Maintenance Checklist

Duplicate this page for routine use.

Maintenance Check Item	For the week of:						
	Mon.	Tues.	Wed.	Thurs.	Fri.	Sat.	Sun.
Check Safety Interlock Operation							
Make sure the ROPS is fully raised and locked in position							
Check Grass Deflector in Down Position							
Check Brake Operation							
Check Fuel Level							
Check Engine Oil Level							
Check Cooling System Fluid Level							
Check Drain Water/Fuel Separator							
Check Air Filter Restriction Indicator ³							
Check Radiator & Screen for Debris							
Check Unusual Engine Noises ¹							
Check Unusual Operating Noises							
Check Transmission Oil Level							
Check Hydraulic Hoses for Damage							
Check Fluid Leaks							
Check Tire Pressure							
Check Instrument Operation							
Check Condition of Blades							
Lubricate All Grease Fittings ²							
Touch-up Damaged Paint							

1. Check glow plug and injector nozzles, if hard starting, excess smoke or rough running is noted.
2. Immediately after every washing, regardless of the interval listed.
3. If indicator shows red

Important: Refer to your engine operator's manual for additional maintenance procedures.

Notation for Areas of Concern		
Inspection performed by:		
Item	Date	Information

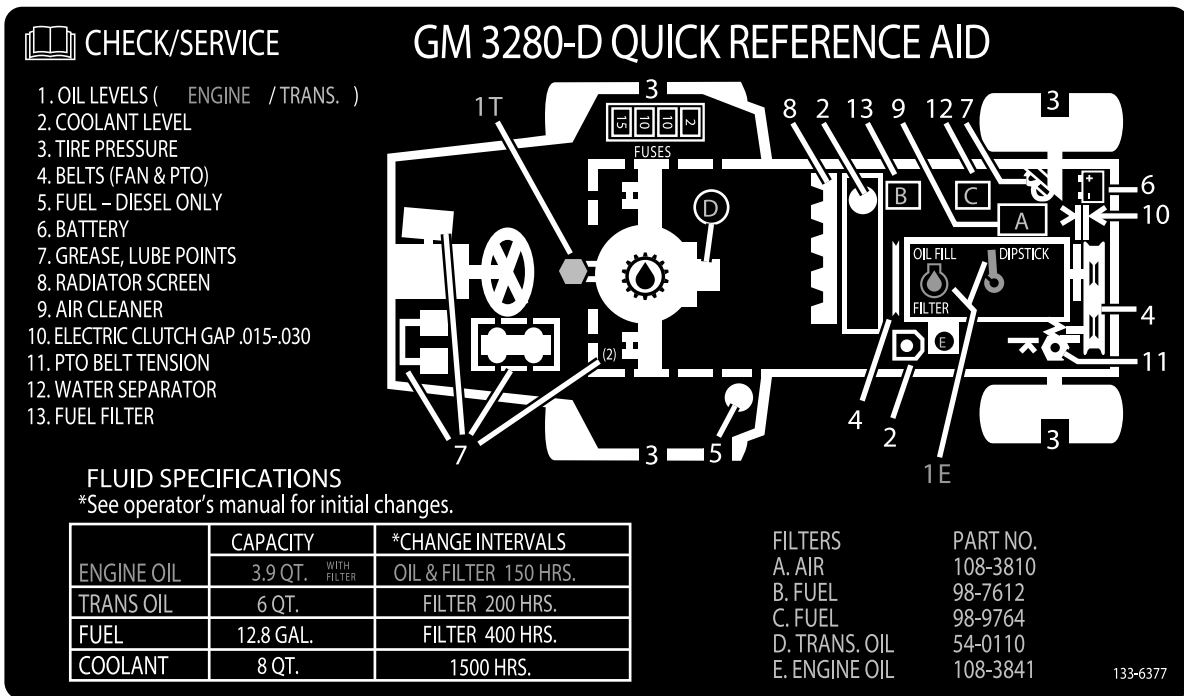


Figure 37
Service Interval Chart

Premaintenance Procedures

Pre-Maintenance Safety

⚠ CAUTION

If you leave the key in the key switch, someone could accidentally start the engine and seriously injure you or other bystanders.

Remove the key from the key switch before you perform any maintenance.

- Keep all parts of the machine in good working condition and all hardware tightened, especially blade-attachment hardware. Replace all worn or damaged decals.
- Never allow untrained personnel to service the machine.
- Before adjusting, cleaning, or repairing the machine, do the following:
 1. Move the machine to level surface.
 2. Move the traction pedal to the NEUTRAL position.
 3. Ensure that the PTO switch is in the OFF position.
 4. Set the parking brake.
 5. Move the throttle switch to the LOW-IDLE position.
 6. Lower the mower deck.

7. Shut off the engine and remove the key.
8. Wait for all moving parts to stop.
9. Allow machine components to cool before performing maintenance.

- Whenever you park or store the machine, or leave it unattended, lower the cutting units unless you use a positive mechanical lock.
- If possible, do not perform maintenance on the machine while the engine is running. If you must run the engine to perform maintenance on the machine, keep your hands, feet, other body parts, and clothing away from all moving parts, the mower-discharge area, and the underside of the mowers.
- Do not touch parts of the machine or an attachment that may be hot from operation. Allow the parts to cool before attempting to maintain, adjust, or service them.
- Use jack stands to support the machine and/or its components when required.
- Carefully release pressure from components with stored energy.
- If your machine requires major repairs or if you desire assistance, contact an Authorized Toro Distributor.
- Use only genuine Toro replacement parts and accessories. Replacement parts and accessories made by other manufacturers could be dangerous, and such use could void the product warranty.

Hydraulic Pump Access

Removing the Seat and Seat Plate

1. Remove the 2 flange-head bolts (3/8 x 3/4 inch) at the that secure the front of the seat plate to the chassis of the machine (Figure 38).

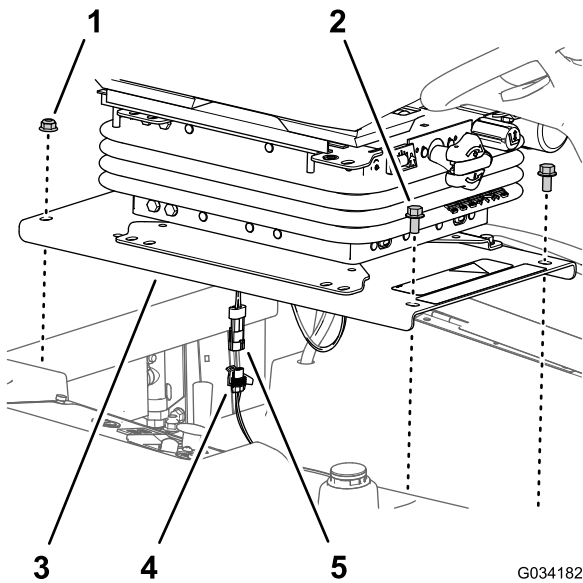


Figure 38

G034182

- | | |
|---------------------------------------|---|
| 1. Flange locknuts (3/8 inch) | 4. 2-socket connector (wire harness for the machine) |
| 2. Flange-head bolts (3/8 x 3/4 inch) | 5. 2-pin connector (operator-presence switch harness) |
| 3. Seat plate | |

4. Assemble the seat plate (Figure 38) to the carriage bolts with the 2 flange locknuts (3/8 inch) that you removed in step 2 of [Removing the Seat and Seat Plate \(page 37\)](#).
5. Align the front holes in the seat plate (Figure 38) with the threads of the tank rods.
6. Assemble the seat plate (Figure 38) to the tank rods with the 2 flange-head bolts (3/8 x 3/4 inch) that you removed in step 1 of [Removing the Seat and Seat Plate \(page 37\)](#).
7. Torque the flange locknuts and flange-head bolts to 37 to 45 N·m (27 to 33 ft-lb).
8. Checking the interlock system; refer to [Checking the Interlock System \(page 27\)](#).

2. Remove the 2 flange locknuts (3/8 inch) at the that secure the back of the seat plate to the chassis of the machine (Figure 38)
3. Partially lift the seat assembly.
4. Disconnect the 2-pin connector for the operator-presence switch harness from the 2-socket connector of the wire harness for the machine (Figure 38).
5. Remove the seat assemble from the machine.

Installing the Seat and Seat Plate

Install the seat once you have repaired the machine and closed the bypass valve for the hydraulic pump.

1. Align the seat assemble to the opening in the fuel tank.
2. Connect the 2-pin connector for the operator-presence switch harness into the 2-socket connector of the wire harness for the machine; refer to [Figure 38 of Removing the Seat and Seat Plate \(page 37\)](#).
3. Align the rear holes in the seat plate (Figure 38 of [Removing the Seat and Seat Plate \(page 37\)](#)) with the 2 carriage bolts (3/8 x 1 inch) in the radiator channel.

Lubrication

Greasing the Bearings and Bushings

Service Interval: Every 50 hours—Grease the bearings and bushings. When operating the machine in extremely dusty and dirty conditions, lubricate the bearings and bushings daily.

Every 400 hours/Yearly (whichever comes first)—Grease the rear-axle bearings

Grease specification: No. 2 lithium grease.

Important: Dusty and dirty operating conditions could cause dirt to get into the bearings and bushings, resulting in accelerated wear.

Note: Lubricate grease fitting immediately after every washing, regardless of interval specified.

1. Wipe grease fitting clean so foreign matter cannot be forced into the bearing or bushing.
2. Pump grease into the bearing or bushing.
3. Wipe up excess grease.

The bearing and bushing lubrication points are as follows:

- PTO universal shaft (Figure 39)

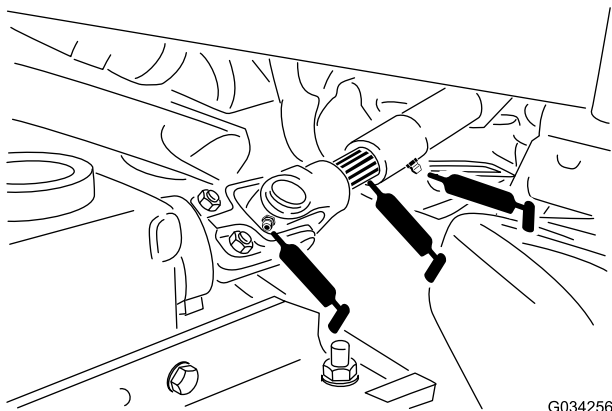


Figure 39

- Lift-arm pivot bushings (Figure 40)

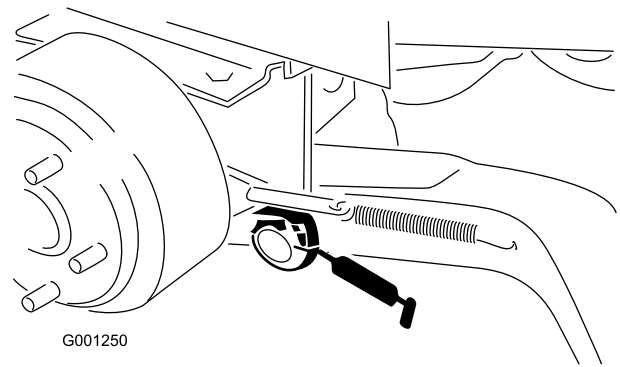


Figure 40

- Brake pivot bushings (Figure 41)

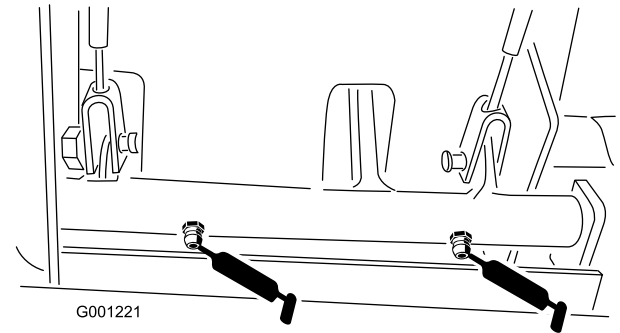


Figure 41

- Brake cables (drive wheel and brake pedal ends) (Figure 41)
- PTO tension pivot (Figure 42)

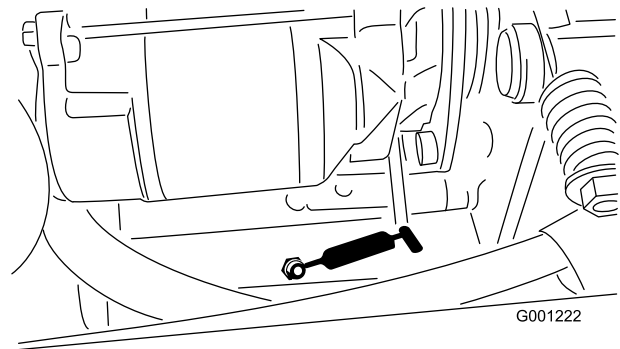


Figure 42

- Rear PTO bearing (Figure 42)
- Rear wheel spindle bushings (Figure 43)

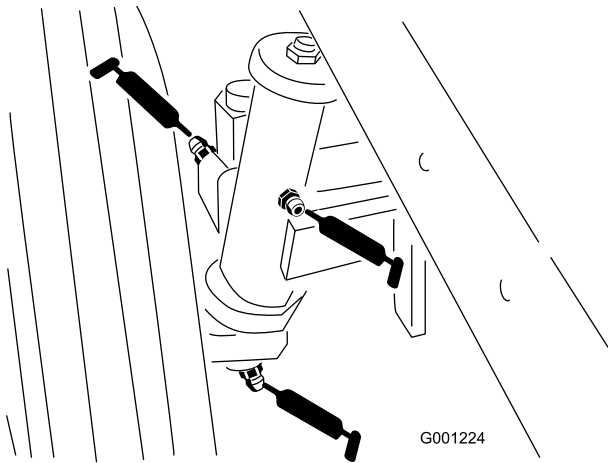


Figure 43

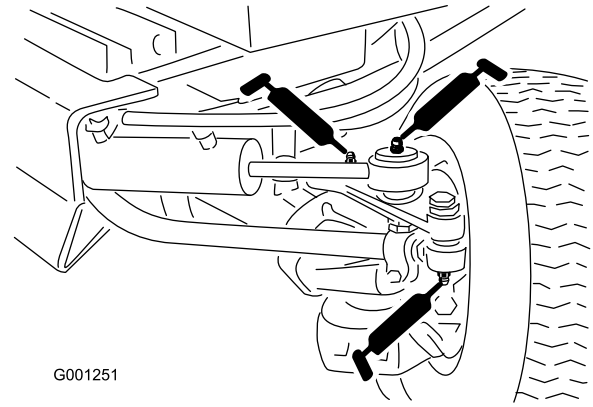


Figure 46

- Steering-plate bushings (Figure 44)

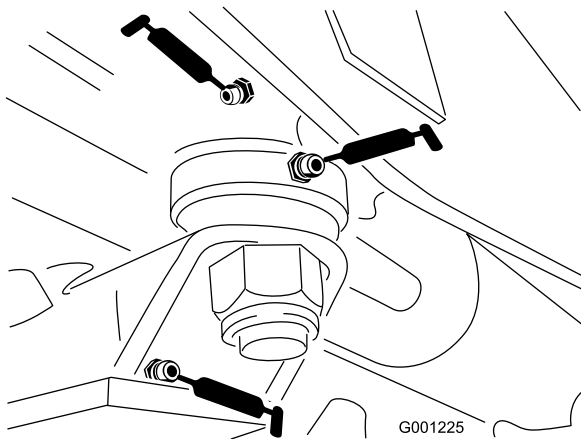


Figure 44

- Axle-pin bushing (Figure 44)
- Drive shaft (3) (Figure 45)

Note: 4-wheel-drive models only

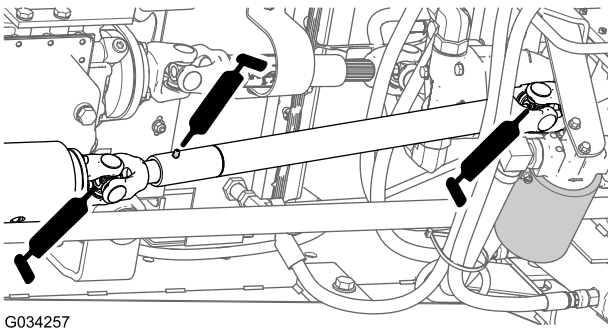


Figure 45

- Tie-rod ends (2) (Figure 46)

- Cylinder-rod ends (2) (Figure 46)
- Steering pivots (2) (Figure 46)
- Axle-pivot pin (Figure 46)

Note: Bearing life can be negatively affected by improper wash-down procedures. Do not wash down the machine when it is still hot and avoid directing high-pressure or high-volume spray at the bearings.

Engine Maintenance

Note: Determine the left and right sides of the machine from the normal operating position.

Servicing the Air Cleaner

Checking the Air Cleaner Indicator

Service Interval: Before each use or daily

- Check the air-cleaner body for damage that could cause an air leak. Replace a damaged air-cleaner body. Check the whole intake system for leaks, damage, or loose hose clamps.
- Replace the air cleaner element when the air-cleaner indicator (Figure 47) shows red. Do not over-clean the air-filter element.

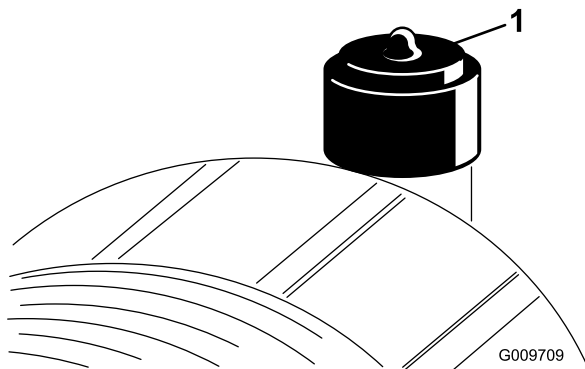


Figure 47

1. Air-cleaner indicator

- Ensure that the cover is seated correctly and seals with the air-cleaner body.

Replacing the Air Cleaner Elements

Service Interval: Every 50 hours—Inspect the air-cleaner element.

Every 400 hours—Replace the primary air-cleaner element(s) (earlier if the air cleaner indicator shows red, and more frequently in extremely dirty or dusty conditions). Replace the safety filter after every 3 primary air-cleaner element replacements.

Important: Avoid using high-pressure air that could force dirt through the filter and into the intake tract, causing damage. This cleaning process prevents debris from migrating into the intake when you remove the primary filter.

Important: Do not clean the used element to prevent the possibility of damaging the filter media. Inspect the new filter for shipping damage, checking the sealing end of the filter and the body. Do not use a damaged element.

Important: Be sure that the cover is seated correctly and seals with the air-cleaner body.

1. Replace the primary air-cleaner element (Figure 48).

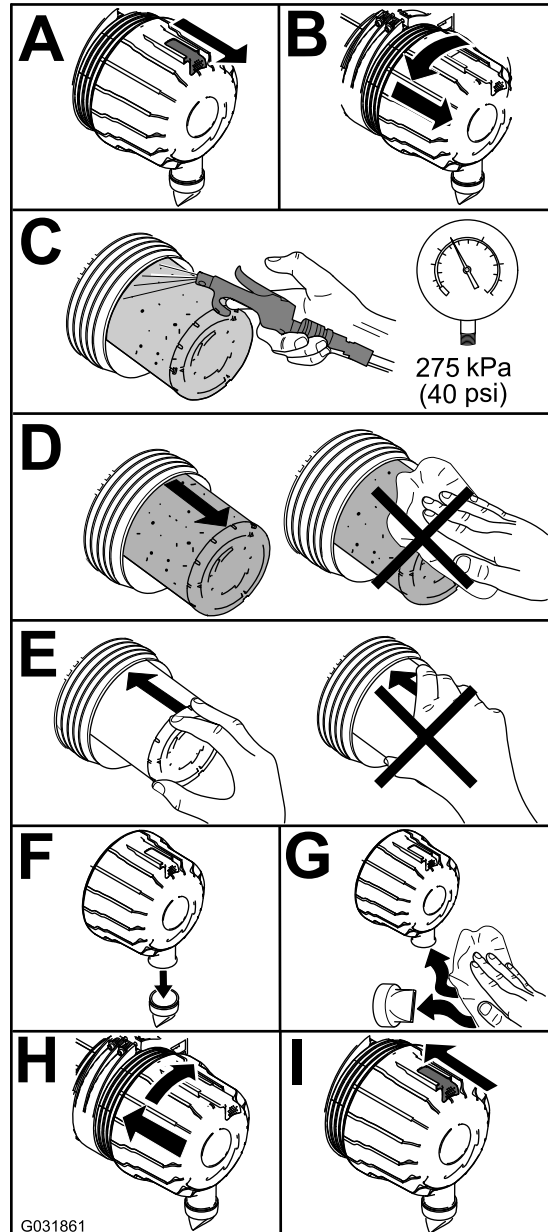


Figure 48

2. Check the air-cleaner safety filter for dust and debris (Figure 49).

Important: Never attempt to clean the safety filter (Figure 49). Replace the safety filter after every 3 primary filter services.

Note: Replace the air-cleaner safety filter if it dirty.

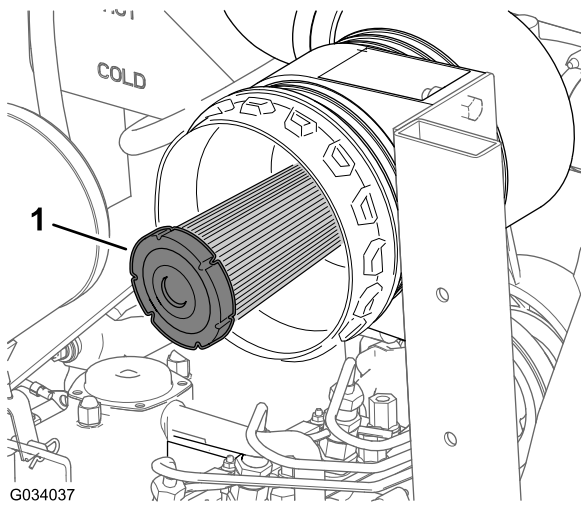


Figure 49

1. Air-cleaner safety filter

3. Reset the air-cleaner indicator if it shows red; refer to [Figure 47](#) in [Checking the Air Cleaner Indicator](#) (page 40).

Servicing the Engine Oil

The engine is shipped with oil in the crankcase.

Crankcase capacity: approximately 3.8 L (4 qt) with the filter.

Engine oil specification:

- **Engine oil-type**—API Classification Level Required: CH-4, CI-4 or higher.
- **Engine oil viscosity**
 - Preferred oil: SAE 15W-40 (above 0°F)
 - Alternate oil: SAE 10W-30 or 5W-30 (all temperatures)

Note: Toro Premium Engine Oil is available from your distributor in either 15W-40 or 10W-30 viscosity. See the parts catalog for part numbers.

Checking the Engine-Oil Level

Service Interval: Before each use or daily Check the engine-oil level before the engine is first started and daily thereafter.

Note: The best time to check the engine oil is when the engine is cool before it has been started for the day. If you have already run the engine, allow the oil to drain back down to the sump for at least 10 minutes before checking. If the oil level is at or below the ADD mark on the dipstick, add oil to bring the oil level to the FULL mark. Do not overfill. If the oil level is between the FULL and ADD marks, you do not need to add oil.

1. Move the machine on a level surface, set the parking brake, lower the cutting deck, shut off the engine, and remove the key from the key switch.

2. Open the hood.
3. Check the engine-oil level as shown in [Figure 50](#).

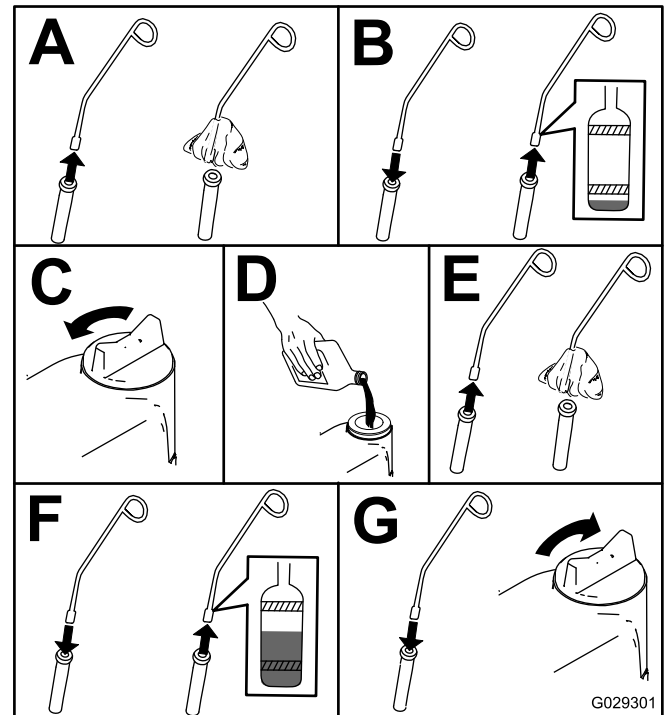


Figure 50

4. If the oil level is below the Full mark, remove the fill cap ([Figure 51](#)) and add oil until the level reaches the Full mark on the dipstick. **Do not overfill.**

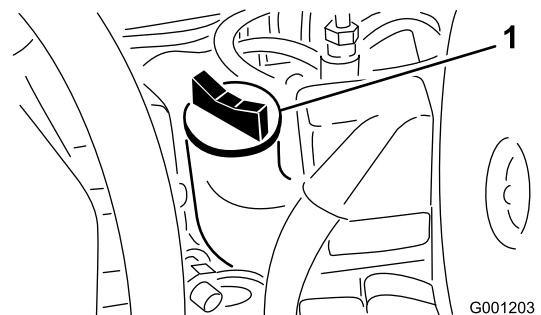


Figure 51

1. Oil fill

5. Install the oil-fill cap and close the hood.

Changing the Engine Oil And Filter

Service Interval: After the first 50 hours

Every 150 hours

If possible, run engine just before changing oil because warm oil flows better and carries more contaminants than cold oil.

1. Position the machine on a level surface.
2. Open the hood.
3. Set a drain pan under the oil pan and in line with the drain plug (Figure 52).

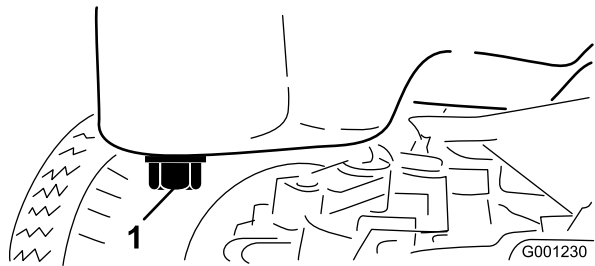


Figure 52

1. Drain plug

-
4. Clean the area around the drain plug.
 5. Remove the drain plug and allow the oil to flow into the drain pan.
 6. Remove and replace the oil filter (Figure 53).

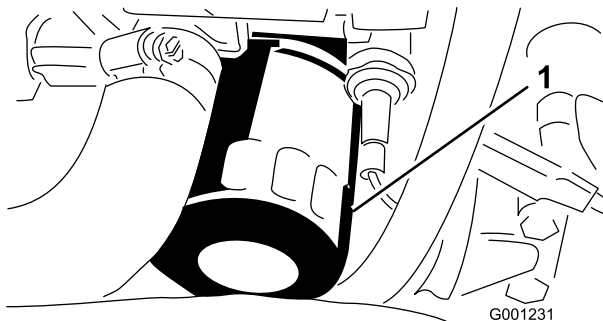


Figure 53

1. Oil filter

-
7. Install the drain plug and wipe up any spilled oil.
 8. Fill the crankcase with specified oil; refer to the [Servicing the Engine Oil \(page 41\)](#).

Fuel System Maintenance

Note: Refer to [Adding Fuel to the Machine \(page 27\)](#) for proper the fuel recommendations.

⚠ DANGER

Under certain conditions, diesel fuel and fuel vapors are highly flammable and explosive. A fire or explosion from fuel can burn you and others and can cause property damage.

Never smoke when handling fuel, and stay away from an open flame or where fuel fumes may be ignited by a spark.

Servicing the Water Separator

Service Interval: Every 400 hours

Drain the water or other contaminants from the water separator (Figure 54) daily. Replace the filter canister after every 400 operating hours.

1. Place a clean container under the fuel filter.
2. Loosen the drain plug on the bottom of the filter canister (Figure 54).

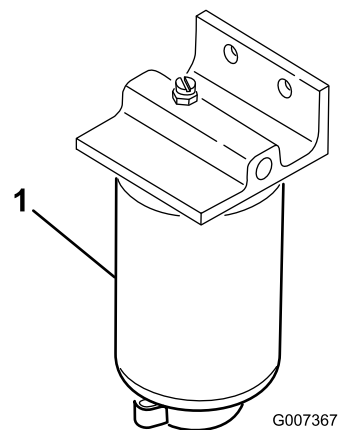


Figure 54

1. Filter canister
-
3. Clean the area where the filter canister mounts.
 4. Remove the filter canister and clean the mounting surface.
 5. Lubricate the gasket on the filter canister with clean oil.
 6. Install the filter canister by hand until the gasket contacts mounting surface, then rotate it an additional 1/2 turn.
 7. Tighten the drain plug on the bottom of the filter canister.

Cleaning the Fuel Tank

Service Interval: Every 400 hours/Yearly (whichever comes first)—Drain and clean the fuel tank

Drain and clean tank if fuel system becomes contaminated or if you store the machine for an extended period of time. Use clean diesel fuel to flush out the tank.

Inspecting the Fuel Lines and Connections

Service Interval: Every 400 hours/Yearly (whichever comes first)

Inspect the fuel lines for deterioration, damage, or loose connections.

Bleeding the Air from the Fuel-Injector Tubing

Note: Perform this procedure only if fuel system has been purged of air through normal priming procedures and engine does not start; refer to [Bleeding the Fuel-Injection Pump](#) (page 31).

1. Loosen the tube nut at the No. 1 injector nozzle and holder assembly at the injection pump (Figure 55).

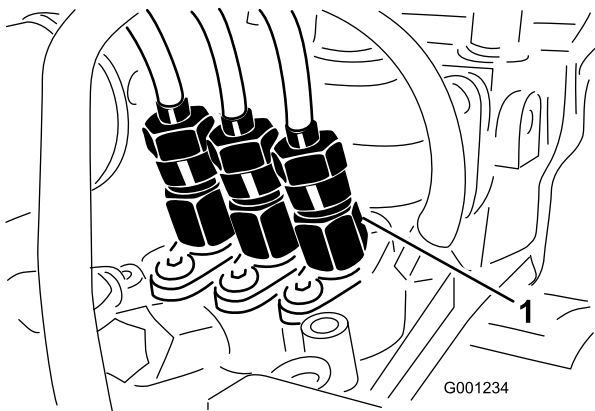


Figure 55

1. No. 1 injector nozzle
-
2. Move the throttle to the FAST position.
 3. Rotate the key switch to the START position and watch the fuel flow around the tube nut.
 4. Rotate the key switch to the OFF position when you attain a solid flow of fuel from the tube.
 5. Tighten the tube nut securely.
 6. Wipe clean any fuel that has accumulated around the injector nozzle and the injection pump.
 7. Repeat steps 1 through 6 for the remaining nozzles.

Electrical System Maintenance

Electrical System Safety

- Disconnect the battery before repairing the machine. Disconnect the negative terminal first and the positive last. Connect the positive terminal first and the negative last.
- Battery acid is poisonous and can cause burns. Avoid contact with your skin, eyes, and clothing. Protect your face, eyes, and clothing when working with a battery.
- Battery gases can explode. Keep cigarettes, sparks, and flames away from the battery.
- Charge the batteries in an open, well-ventilated area, away from sparks and flames. Unplug the charger before connecting or disconnecting the battery. Wear protective clothing and use insulated tools.
- Do not use a pressure washer near any electronic components.

WARNING

CALIFORNIA Proposition 65 Warning

Battery posts, terminals, and related accessories contain lead and lead compounds, chemicals known to the State of California to cause cancer and reproductive harm.
Wash hands after handling.

Servicing the Battery

Checking the Battery Cable Connections

Service Interval: Every 50 hours—Check the battery cable connections.

⚠ WARNING

Battery terminals or metal tools could short against metal machine components, causing sparks. Sparks can cause the battery gasses to explode, resulting in personal injury.

- When removing or installing the battery, do not allow the battery terminals to touch any metal parts of the tractor.
- Do not allow metal tools to short between the battery terminals and metal parts of the machine.

- The battery cables must be tight on the terminals to provide good electrical contact.
- If corrosion occurs, perform the following:

⚠ WARNING

Incorrect battery cable routing could damage the machine and cables, causing sparks. Sparks can cause the battery gasses to explode, resulting in personal injury.

- Always disconnect the negative (black) battery cable before disconnecting the positive (red) cable.
 - Always connect the positive (red) battery cable before connecting the negative (black) cable.
1. Open the hood; refer to [Opening the Hood \(page 25\)](#).
 2. Disconnect the negative (-) cable from the battery post ([Figure 56](#)).

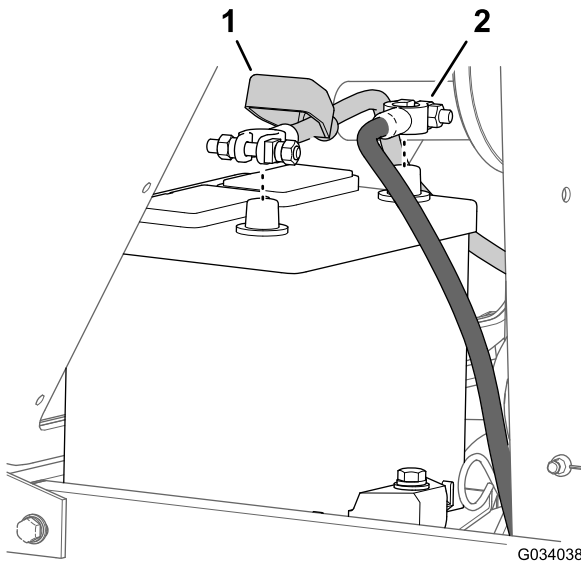


Figure 56

1. Insulator cover
2. Negative-battery cable (positive-battery cable)

3. Slide the insulator cover away from the battery-cable clamp ([Figure 56](#)).
4. Disconnect the positive (+) cable from the battery post ([Figure 56](#)).
5. Scrape clean the clamps and terminals separately.
6. Coat the terminals of the battery cables with petroleum jelly.
7. Connect the cables, positive (+) cable to the positive-battery post ([Figure 56](#)).
8. Connect the negative (-) cable to the negative-battery post ([Figure 56](#)).

Checking the Battery Electrolyte

Service Interval: Every 50 hours

Monthly

⚠ DANGER

Battery electrolyte contains sulfuric acid which is a deadly poison and causes severe burns.

- Do not drink electrolyte and avoid contact with skin, eyes, or clothing. Wear safety glasses to shield your eyes and rubber gloves to protect your hands.
- Fill the battery where clean water is always available for flushing the skin.

Note: If you store the machine in a location where temperatures are extremely high, the battery will run down more rapidly than if the machine is stored in a location where temperatures are cool.

1. Maintain the battery electrolyte concentration at a specific gravity between 1.265 to 1.299.
2. Maintain the cell level with distilled or demineralized water.

Note: Do not fill the cells above the bottom of the split ring inside each cell.

3. Clean the top of the battery periodically by performing the following:

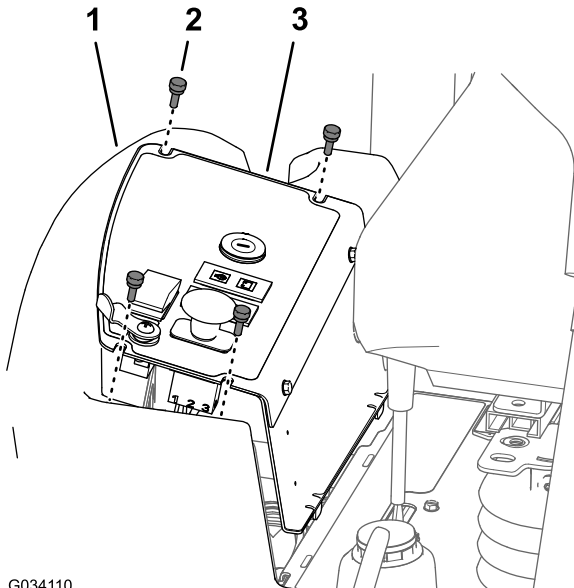
Important: Do not remove the fill caps while cleaning the battery.

- A. Washing the top of the battery with a brush dipped in ammonia or bicarbonate of soda solution.
- B. Flush the top surface with clean water.

Accessing the Fuse Block and Standard Control Module

Removing the Control-Panel Plate

1. Remove the 4 thumb screws that secure the control-panel plate to the fuel tank (Figure 57).



G034110

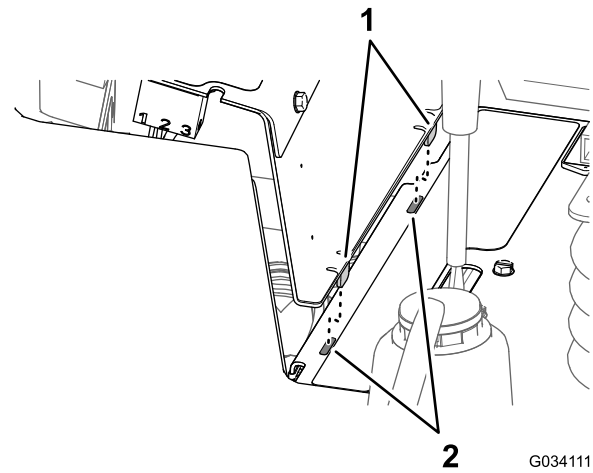
Figure 57

1. Fuel tank
2. Thumb screw
3. Control-panel plate

2. Lift up the control-panel plate (Figure 57).
3. Disconnect the electrical connectors from the switches and warning lights as necessary to access the fuse block or the standard control module.

Installing the Control-Panel Plate

1. Connect the electrical connectors to the switches and warning lights that you disconnected in step 3 of Removing the Control-Panel Plate (page 45).
2. Align the 2 tabs at the bottom of the side panel with the 2 slots in the frame for the console (Figure 58).



G034111

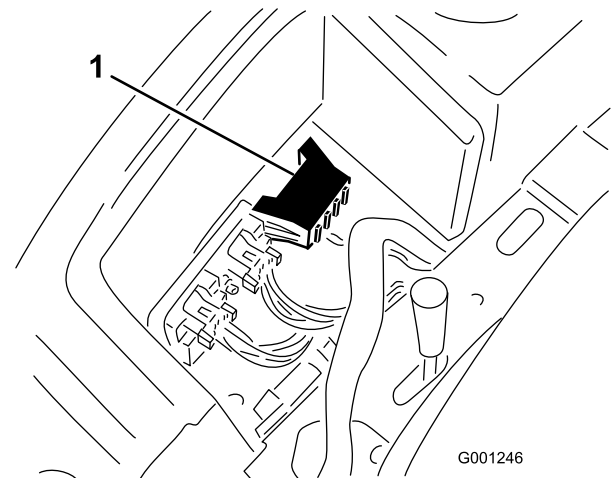
Figure 58

1. Tabs (side panel)
2. Slots (frame—console)

3. Align the slots in the top of the control-panel plate with the holes in the flange of the fuel tank (Figure 57).
4. Assemble the control panel plate to the flange of the fuel tank with the 4 thumb screws (Figure 57) the you removed in step 1 of Removing the Control-Panel Plate (page 45).

Accessing the Fuses

The fuse block and fuses are located under the control panel (Figure 59).



G001246

Figure 59

1. Fuse block

Standard Control Module (SCM)

Important: The information presented below is and overview of the standard control module. Refer to the *Service Manual* for the machine for troubleshooting procedures using the standard control module.

The standard control module (SCM) is used to monitor and control standard electrical features of the machine.

Inputs and outputs are identified by yellow LED indicators mounted on the printed-circuit board.

The SCM monitors inputs of the following:

- Controls in the Neutral position
- Parking brake position

- Power takeoff (PTO) operation
- Engine starting function
- High temperature condition

The SCM controls outputs features include the following:

- The SCM energizes the outputs for the PTO, starter, and the ETR (energize to run) solenoids.
- Output LEDs monitor relay condition indicating the presence of voltage at 1 of 3 specific output terminals.

Note: The SCM does not connect to an external computer or hand held device, cannot be re-programmed, and does not record intermittent fault troubleshooting data.

The decal on the SCM only includes symbols. 3 LED output symbols are shown in the output box. All other LEDs are inputs. The chart below identifies the symbols.

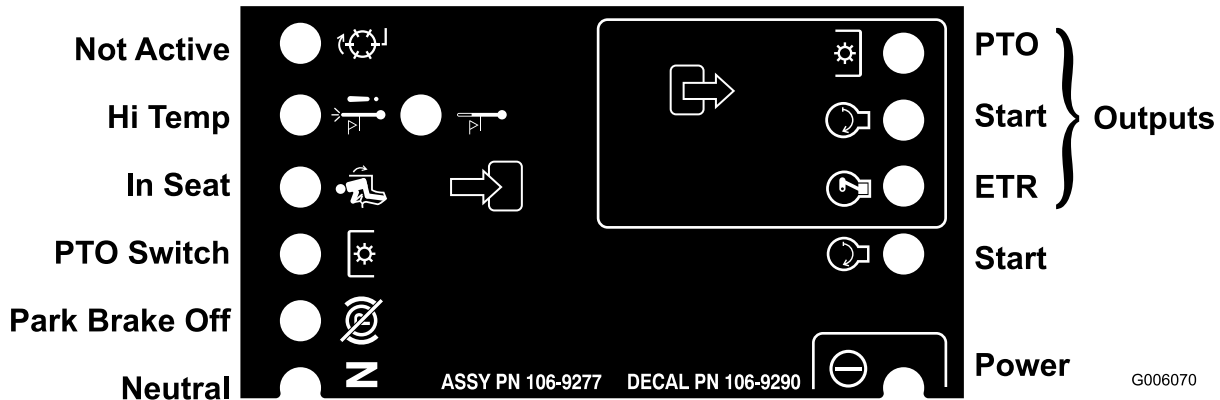


Figure 60

Each row in the logic chart below identifies input and output requirements for each specific product function. Product functions are listed in the left column. The symbols identify specific circuit conditions, including energized to voltage, closed to ground, and open to ground.

Symbols Chart for the Standard Control Module

Function	Inputs								Outputs		
	Power On	In Neutral	Start On	Brake On	PTO On	In Seat	Hi Temp Shutdown	Hi Temp Warning	Start	ETR	PTO
Start	—	—	+	⊗	⊗	—	⊗	⊗	+	+	⊗
Run (Off Unit)	—	—	⊗	⊗	⊗	⊗	⊗	⊗	⊗	+	⊗
Run (On Unit)	—	⊗	⊗	—	⊗	—	⊗	⊗	⊗	+	⊗
Mow	—	⊗	⊗	—	—	—	⊗	⊗	⊗	+	+
Hi Temp Warning	—		⊗				⊗	— (A)	+	+	⊗
Hi Temp Shutdown	—		⊗				—		⊗	⊗	⊗

(-) Indicates a circuit closed to ground. (LED ON)

(⊗) Indicates a circuit open to ground or de-energized (LED OFF)

(+) Indicates an energized circuit (clutch coil, solenoid, or start input) (LED ON)

A Blank indicates a circuit that is not involved with the logic.

(A) PTO input must be re-initiated after engine cool down (cycle key on-off)

Servicing the Wiring Harness

Prevent corrosion of wiring terminals by applying Grafo 112X (Skin-over) grease, Toro Part No. 505-47, to the inside of all harness connectors whenever you replace the harness.

Important: Whenever working with the electrical system, always disconnect the battery cables, negative (-) cable first, to prevent possible wiring damage from short-outs.

Drive System Maintenance

Torquing the Wheel-Lug Nuts

Service Interval: After the first hour

After the first 10 hours

Every 200 hours

Wheel-lug nut torque specification: 102 to 108 N·m (75 to 80 ft-lb)

Torque the lug nuts at the front and rear wheels in a crossing pattern as shown in [Figure 61](#) to the specified torque.

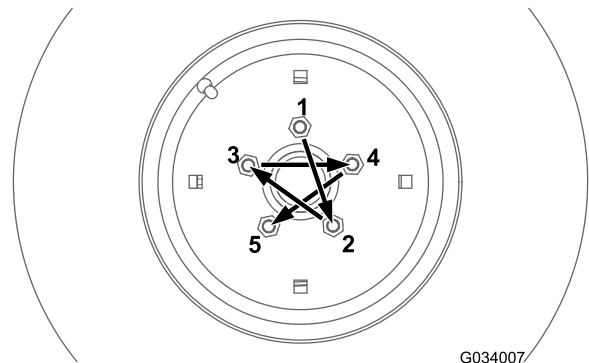


Figure 61

Maintaining the Rear Axle (Model 30345 Only)

Rear Axle-Lubricant Specification: SAE 80W-90 weight gear lube

Checking the Rear Axle Lubricant (Model 30345 Only)

Service Interval: Every 200 hours Check the rear axle lubricant before the machine is operated for the first time, and then every 200 hours thereafter.

The rear axle has 3 separate reservoirs that use SAE 80W-90 weight gear lube. Although the axle is shipped with lubricant from the factory, check the level before operating the machine for the first time.

1. Position the machine on a level surface.
2. Remove the check plug from the center-axle housing and the axle and fill/check plugs at each outboard-axle case ([Figure 62](#) and [Figure 63](#)).

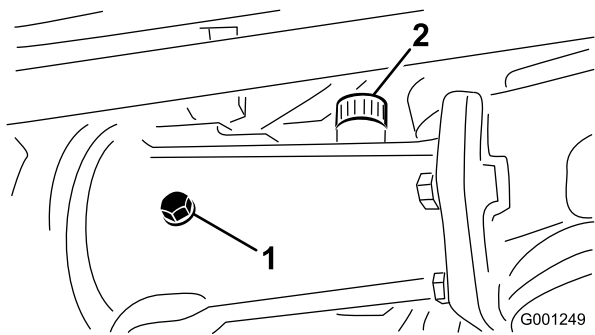


Figure 62

1. Check plug
2. Fill plug

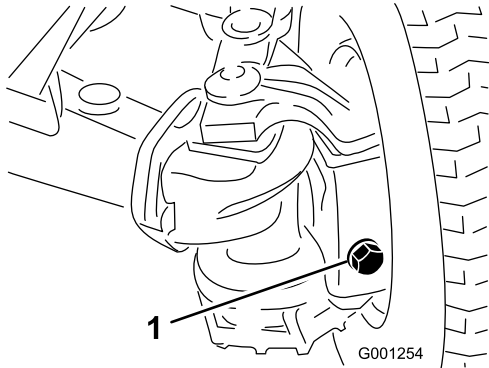


Figure 63

1. Fill/check plug (outboard-axle case—1 on each end of axle)

3. Check that there is lubricant up to the threads at the bottom of each plug hole (Figure 62 and Figure 63).
4. If the level of lubricant is low, perform the following: and
 - A. If filling the center-axle housing, remove the fill plug (Figure 62).
 - B. Add the specified rear-axle lubricant into the axle reservoir(s) until the lubricant level up to the bottom of the check-plug holes (Figure 62 and Figure 63).
 - C. If removed from the center-axle housing, apply PTFE thread sealant to the threads of the fill plug and install it into the housing (Figure 62).
5. Apply PTFE thread sealant to the threads of the check plug from the center-axle housing and fill/check plugs from the 2 outboard-axle cases (Figure 62).
6. Install the check plug into the center-axle housing and fill/check plugs into the 2 outboard-axle cases (Figure 62 and Figure 63).

Changing the Rear Axle Lubricant (Model 30345 Only)

Service Interval: Every 400 hours

1. Position the machine on a level surface.
2. Clean the areas around the 3 drain plugs (Figure 64).

Note: 1 plug at each outboard-axle case and 1 plug at the center-axle housing.

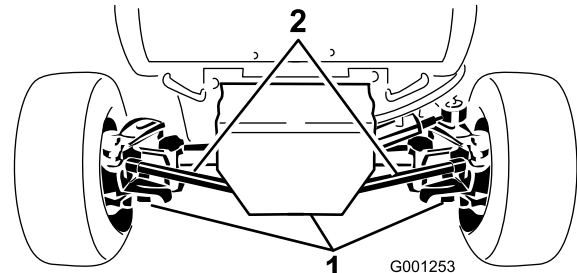


Figure 64

1. Drain plug (3)

3. Align a drain pan under the drain plug, remove the plug, and allow the oil to completely drain.
4. Apply PTFE thread sealant to the threads of the drain-plug and install it in the axle.
5. Repeat steps .3 and 4 at the other 2 drain plugs.
6. Remove the check plug from the center-axle housing and the fill/check plugs at each outboard-axle case
7. Add the specified rear-axle lubricant into the axle reservoir(s) until the lubricant level up to the bottom of the threads at check-plug hole; refer to the lubrication specification in [Maintaining the Rear Axle \(Model 30345 Only\)](#) (page 47).
8. Apply PTFE thread sealant to the threads of the check plug from the center-axle housing and fill/check plugs from the 2 outboard-axle cases; refer to [Figure 62 and Figure 63 in Checking the Rear Axle Lubricant \(Model 30345 Only\)](#) (page 47).
9. Install the check plug into the center-axle housing and fill/check plugs into the 2 outboard-axle cases; refer to [Figure 62 and Figure 63 in Checking the Rear Axle Lubricant \(Model 30345 Only\)](#) (page 47).

Maintaining the Bidirectional Clutch

Clutch lubricant specification: Mobilfluid 424™

Important: Do not use engine oil (such as 10W30) in the bidirectional clutch. Anti-wear and extreme pressure additives cause undesirable clutch performance.

Note: Determine the left and right sides of the machine from the normal operating position.

Checking the Bidirectional Clutch Lubricant (Model 30345 Only)

Service Interval: Every 200 hours Check the bidirectional clutch lubricant before the machine is operated for the first time, and then every 200 hours thereafter.

1. Position the machine on a level surface.
2. Rotate the clutch (Figure 65) so that the check plug is positioned at 4 o'clock.

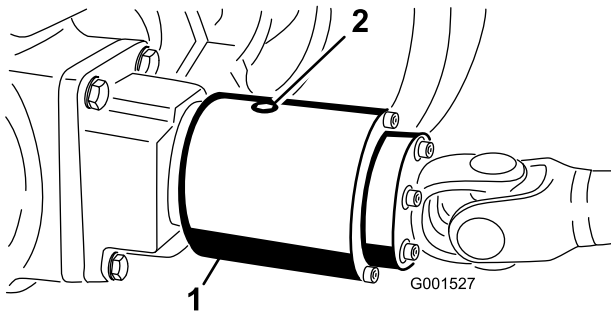


Figure 65

The check plug is shown in the 12 o'clock position.

1. Bidirectional clutch
2. Check plug

3. Remove the check plug.

Note: The fluid level should be up to the hole in the clutch.

4. If the fluid level is low, add the specified fluid into the housing of the bidirectional clutch until it is approximately 1/3 full.
5. Apply PTFE thread sealant to the threads of the check plug.
6. Install the check plug into the clutch housing.

Changing the Bidirectional-Clutch Lubricant (Model 30345 Only)

Service Interval: Every 400 hours

1. Position the machine on a level surface.
2. Clean the area around the check plug on the bidirectional clutch.

3. Rotate the clutch so that the check plug is positioned downward (Figure 66).

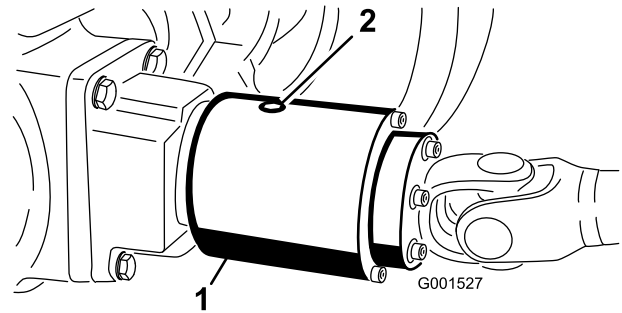


Figure 66

1. Bidirectional clutch
2. Check plug

4. Remove the check plug allowing all lubricant to flow into a drain pan.
5. Rotate the clutch so that the check plug is positioned at 4 o'clock.
6. Add the specified fluid until the lubricant level is up to the threaded hole in the clutch housing.
Note: The clutch should be approximately 1/3 full.
7. Apply PTFE thread sealant to the threads of the check plug.
8. Install the check plug into the clutch housing.

Maintaining the Rear Wheel Alignment

Checking the Rear Wheel Alignment

Service Interval: Every 200 hours

1. Move the machine to a level surface, set the parking brake, and remove the key from the key switch.
2. Rotate the steering wheel so that the rear wheels are straight ahead.
3. Measure the center-to-center distance at wheel hub height, in front and in back of the rear tires.

Note: The rear wheels should not toe-in or toe-out when they are aligned correctly.

4. If the wheels toe-in or toe-out, align the wheels by performing the following:
 - [Adjusting Rear Wheel Toe-in \(Model 30344\) \(page 50\).](#)
 - [Adjusting Rear Wheel Toe-in \(Model 30345\) \(page 50\).](#)

Adjusting Rear Wheel Toe-in (Model 30344)

1. Loosen the jam nuts at both ends of the left and right tie rods.
2. Adjust both tie rods until center-to-center distance at front and back of rear wheels is the same (Figure 67).
3. When rear wheels are adjusted correctly, tighten jam nuts against tie rods.

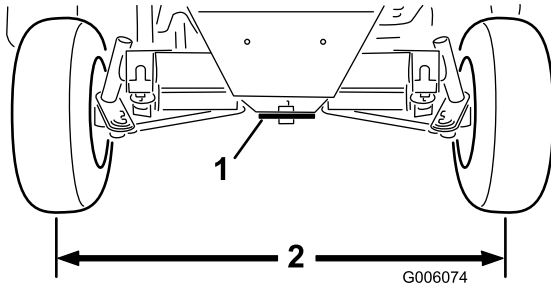


Figure 67

1. Steering plate
2. Same dimension at front and rear of wheels

Adjusting Rear Wheel Toe-in (Model 30345)

1. Remove cotter pin and castle nut securing 1 tie-rod ball joint to the mounting bracket on the axle and separate the ball joint from the axle (Figure 68).

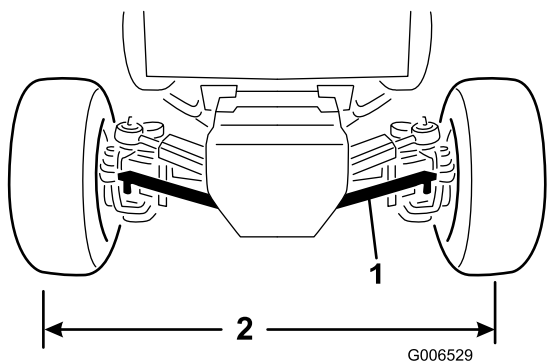


Figure 68

1. Tie rod
2. Same dimension at the front and rear of the wheels

2. Loosen the lock nut and bolt at the tie-rod clamp.
3. Rotate the tie-rod ball joint in or out until the center-to-center distance at front and back of the rear wheels is the same (Figure 68).
4. Install the ball joint to the mounting bracket and check the wheel toe-in.
5. After attaining the desired wheel alignment, assemble ball joint to the mounting bracket with the castle nut and cotter pin.
6. Tighten the locknut and bolt at the tie-rod clamp.

Torquing the Bolts for the Steering-Cylinder Mount (Model 30345 Only)

Service Interval: Every 200 hours

1. Move the machine to a level surface, shut off the engine and remove the key from the key switch.
2. Torque the 4 bolts for the steering-cylinder mount (Figure 69) to 65 to 81 N·m (48 to 60 ft-lb).

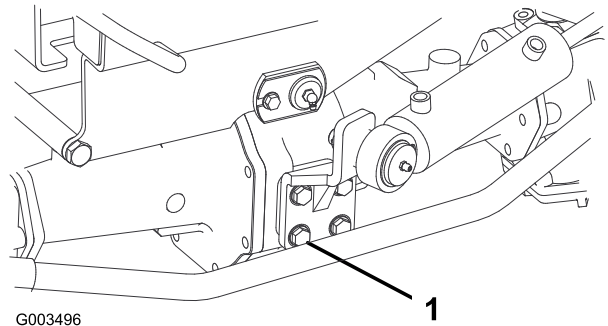


Figure 69

1. Bolt—4 each (steering-cylinder-mount)

Adjusting the Traction Drive for Neutral

If the machine moves when the traction pedal is in the neutral position, adjust the traction cam.

Preparing to Adjust the Traction Drive

Lifting equipment and jack stand capacity: 1900 kg (2 ton) or greater

1. Move the machine to a level surface, shut off the engine, and set the parking brake.

⚠ WARNING

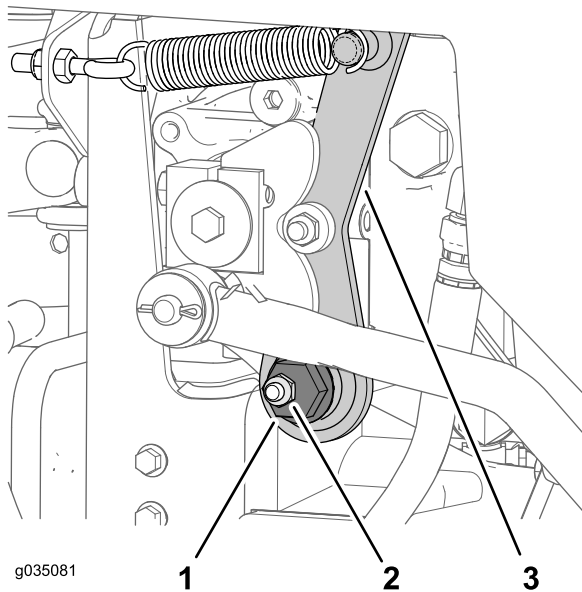
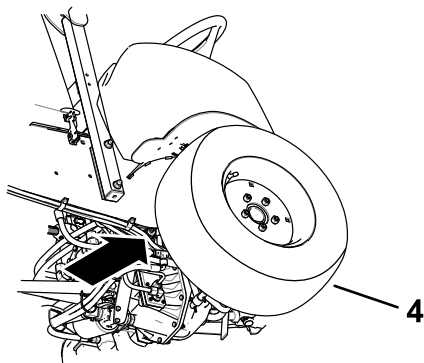
If the machine is not supported adequately, it may accidentally fall, injuring anyone under the machine.

Raise all 4 wheels off the ground or the machine may move while adjusting the traction drive for neutral.

2. Raise the machine and support it with 4 jack stands of the specified capacity under the frame.
3. Remove the seat and seat plate; refer to [Removing the Seat and Seat Plate](#) (page 37).

Adjusting the Traction Drive for Neutral

1. Locate the eccentric hex to the right of the hydraulic pump and below the control console (Figure 70).



g035081

Figure 70

- | | |
|------------------|---------------------|
| 1. Eccentric hex | 3. Neutral arm |
| 2. Retaining nut | 4. Right front tire |

⚠ WARNING

You must run the engine so that you can perform the final traction adjustment. Contact with hot or moving parts can result in personal injury.

Keep your hands, feet, face, and other body parts away from the muffler, other hot parts of the engine, and other rotating parts.

- Determine the middle position of the neutral span and tighten the retaining nut.

Note: Perform this traction drive-neutral adjustment at low-speed idle and verify that the neutral adjustment is correct at high engine speed.

- Tighten the nut securing the adjustment.
- Shut off the engine.

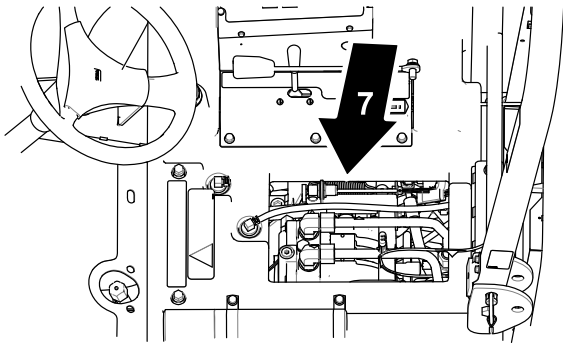
Adjusting the Proximity Sensor

- Locate the proximity sensor at the right, top side hydraulic pump (Figure 71).

- Loosen retaining nut until you can move the eccentric hex (Figure 70).

Note: Ensure that the retaining nut produces enough tension to keep the eccentric hex loosely seated in the neutral arm.

- Start the engine. If the engine does not start perform the following:
 - Locate the proximity sensor at the right, top side hydraulic pump (Figure 71).
 - Verify that the proximity sensor bracket is not bent, and that the light at the back of the sensor is illuminated (Figure 71).
 - If the light at the proximity sensor is not illuminated, adjust the sensor position; refer to [Adjusting the Proximity Sensor](#) (page 51).
- Rotate the eccentric hex counterclockwise until the front wheel starts to rotate forward, then rotate the hex eccentric clockwise until the front wheel starts to rotate rearward (Figure 70).



Adjusting Steering Stops (Model 30345 Only)

The rear-axle-steering stops help prevent over-travel of the steering cylinder in case of impact on the rear wheels. Adjust the stops so that there is 0.23 cm (0.090 inch) clearance between the bolt head and the knuckle on the axle when you turn the steering wheel completely to the left or to the right.

1. Thread the bolts in or out until you attain a clearance of 0.23 cm (0.090 inch) (Figure 72).

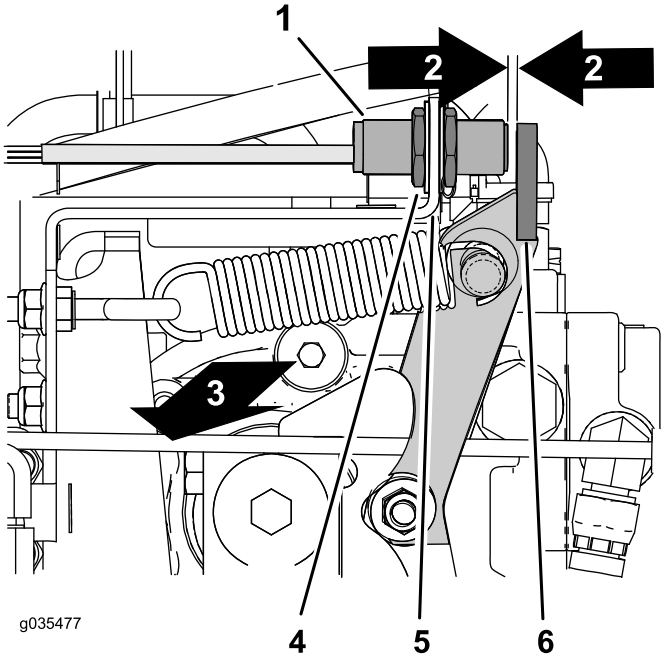


Figure 71

- | | |
|---|-------------------------|
| 1. Proximity sensor | 5. Sensor bracket |
| 2. Gap—2.5 to 3.6 mm(0.10 to 0.14 inch) | 6. Flange (neutral arm) |
| 3. Right side of the machine | 7. Under the seat |
| 4. Jam nut | |

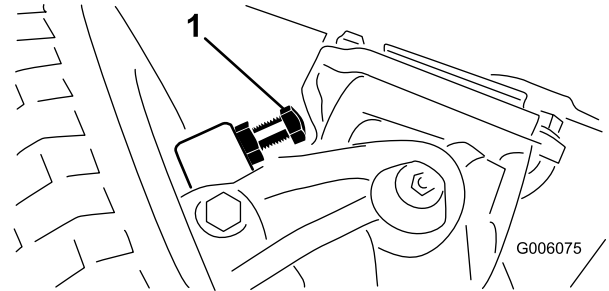


Figure 72

1. Steering stop (right side shown)

2. Loosen the screw on the tie-rod clamp.
3. Rotate the ball joint in or out to adjust the length of the tie rod.
4. Install the ball joint to the mounting bracket and check the wheel toe-in.
5. After attaining the desired adjustment, tighten the screw on the tie-rod clamp and secure the ball joint to the mounting bracket.

2. Loosen the jam nuts at either side of the sensor bracket (Figure 71).
3. Adjust jam nuts until there is a 2.5 to 3.6 mm(0.10 to 0.14 inch) gap between the end of the proximity sensor and the flange of the neutral arm (Figure 71).
4. Tighten the jam nuts (Figure 71).

Finishing the Traction Drive Adjustment

1. Remove the jack stands and lower the machine to the ground.
2. Install the seat and seat plate; refer to [Installing the Seat and Seat Plate](#) (page 37).
3. Test drive the machine to ensure that it does not move when the traction pedal is in neutral.

Cooling System Maintenance

Cooling System Safety

⚠ CAUTION

Discharge of hot, pressurized coolant or touching a hot radiator and surrounding parts can cause severe burns.

- Do not remove the radiator cap when the engine is hot. Always allow the engine to cool at least 15 minutes or until the radiator cap is cool enough to touch without burning your hand before removing the radiator cap.
- Do not touch the radiator and surrounding parts that are hot.

⚠ DANGER

Swallowing engine coolant can cause poisoning.

- Do not swallow engine coolant.
- Keep out of reach from children and pets.

Coolant Specification

Cooling system capacity: 7.5 L (8 qt)

Coolant-type specification:

Recommended Coolant

Note: Coolant must meet or exceed ASTM Standard 3306
Glycol based pre-diluted coolant (50/50 blend)

or

Glycol based coolant mixed with **distilled** water (50/50 blend)

or

Glycol based coolant mixed with good quality water (50/50 blend)

CaCO₃ + MgCO₃ <170 ppm

Chloride <40 ppm (Cl)

Sulfur <100 ppm (SO₄)

Checking the Cooling System and Coolant Level

Service Interval: Before each use or daily Check the level of the coolant level before the engine is first started and daily thereafter.

⚠ WARNING

If the engine has been running, the radiator will be pressurized and the coolant inside will be hot. If you remove the cap, coolant may spray out, causing severe burns.

- Do not remove the recovery-tank cap to check coolant levels.
- Do not remove the recovery-tank cap when the engine is hot. Allow the engine to cool for at least 15 minutes or until the radiator cap is cool enough to touch without burning your hand.

1. Check the level of the coolant in the expansion tank (Figure 73).

Note: The coolant level should be between the marks on the side of the tank.

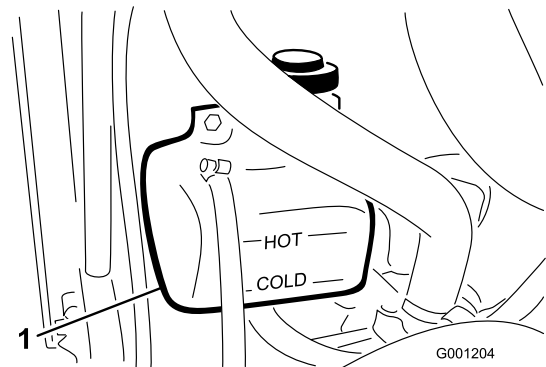


Figure 73

1. Expansion tank

2. If the coolant is low, add the recommended replacement coolant as required. **Do not use water only or alcohol-based coolants. Do not overfill.**
3. Install the expansion-tank cap.

Checking the Hood Screen and Radiator for Debris

Service Interval: Before each use or daily Check a the hood screen and radiator more frequently in extremely dusty and dirty conditions.

To prevent the engine from overheating, keep the hood screen and radiator clean. Check the screen and radiator for buildup of grass, dust, and debris, and if necessary, clean any debris off these parts; refer to [Checking the Hood Screen and Radiator for Debris](#) (page 54).

Cleaning the Hood Screen and Radiator

Service Interval: Every 200 hours—Inspect the cooling-system hoses.

Every 1,500 hours—Replace any moving hoses.

Every 1,500 hours—Flush and replace the cooling-system fluid.

Note: If the PTO shuts off due to high engine temperature, first check the hood screen and radiator for an excessive buildup of debris. Clean the system before operating the machine. Do not shut off the engine immediately; allow the engine to cool by running it without a load.

Clean the radiator as follows:

1. Remove the hood.
2. Working from the fan side of the radiator, blow with low pressure, 172 kPa (25 psi), compressed air (**do not use water**). Repeat this step from the front of the radiator and again from the fan side.
3. After the radiator is thoroughly cleaned, clean out any debris that may have collected in the channel at the radiator base.
4. Clean the screen and install the hood onto the machine.

Brake Maintenance

Adjusting the Service Brakes

Service Interval: After the first 10 hours

After the first 50 hours

Every 50 hours

Adjust the service brakes when there is more than 25 mm (1 inch) of free travel of the brake pedals or when the brakes do not work effectively. Free travel is the distance that the brake pedal moves before you feel braking resistance.

After the first 10 hours of operation, you should need to adjust the brakes only after considerable use thereafter. You can perform these periodic adjustments where the brake cable connects to the bottom of the brake pedals. When the cable is no longer adjustable, you can adjust the star nut on the inside of the brake drum to move the brake shoes outward. However, you will need to adjust the brake cables again to compensate for this adjustment.

1. Release the lock arm from the right-brake pedal so that both pedals operate independent of each other.
2. To reduce the free travel of the brake pedals, loosening the front jam nuts at the threaded end of the brake cable ([Figure 74](#)).

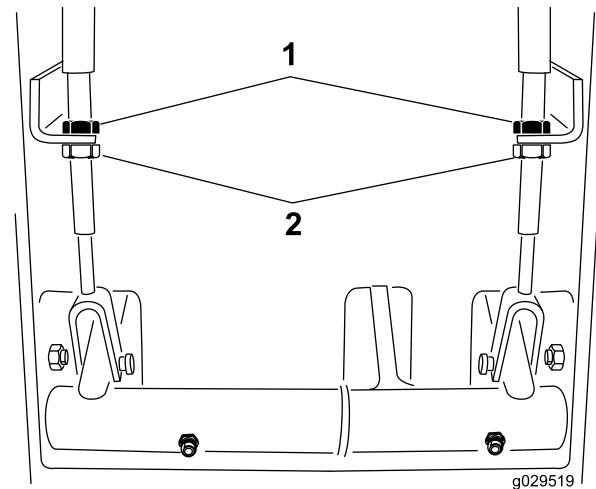


Figure 74

1. Rear jam nuts 2. Front jam nuts

3. Rotate the rear jam nuts to move the cable rearward until the brake pedals have 13 mm to 25 mm (1/2 to 1 inch) of free travel.
4. Tighten the front jam nuts after the free travel of the brake pedals are properly adjusted.

Adjusting the Parking-Brake-Interlock Switch

1. Shut off the engine and remove the key from the key switch.

Note: Do not set the parking brake.

2. Remove the knob from the parking-brake rod and the screws from the steering-tower cover (Figure 75).

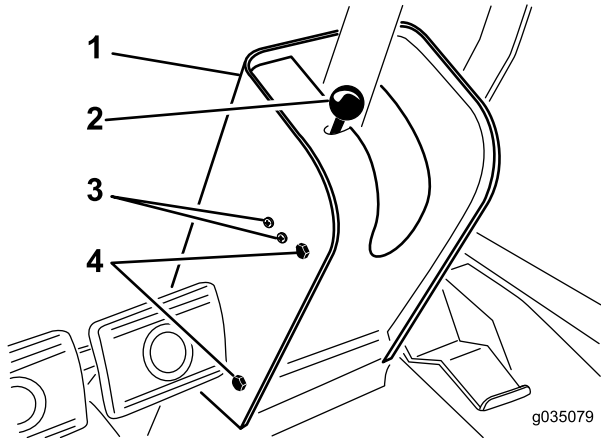


Figure 75

- | | |
|---------------------------|---------------------------|
| 1. Steering-tower cover | 3. Switch-mounting screws |
| 2. Parking-brake knob/rod | 4. Cover-mounting screws |

3. Slide the cover up the steering shaft to expose the parking brake switch (Figure 76).
4. Loosen the screws and nuts that secure the parking brake switch to the left side of the steering tower (Figure 75).
5. Align the paddle of the parking brake rod with the switch plunger (Figure 76)

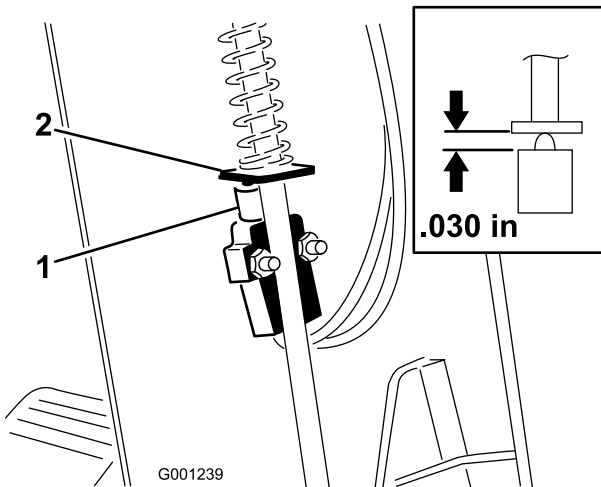


Figure 76

- | | |
|-----------------------------------|-------------------------------|
| 1. Parking-brake interlock switch | 2. Paddle (parking-brake rod) |
|-----------------------------------|-------------------------------|

6. Press down on the parking-brake rod and push up the switch until the compressed length of the switch plunger is 0.7 mm (0.030 inches) (Figure 76, inset).

Note: This is the distance between the brake-rod paddle and the switch-plunger housing.

7. Tighten the switch-mounting screws and nuts.
8. With the parking brake set, use a multimeter to measure continuity through the switch; when the position of the switch is correct, you should measure continuity through switch circuit.

Note: If there is no continuity, move the switch down slightly until there is continuity.

9. Check the operation of the parking brake interlock switch as follows:
 - A. Set the parking brake.
 - B. Press the traction pedal while the engine is running and the PTO switch is in the OFF position; The parking brake interlock switch is operating correctly if the engine shuts off within 2 seconds.

Important: If engine does not stop, the interlock system is not operating correctly. You must repair the interlock system before operating the machine.

10. Install the steering-tower cover and brake-rod knob.

Belt Maintenance

Checking the Condition of the Alternator Belt

Service Interval: Every 200 hours

Check alternator belt for wear or damage.

Note: Replace the alternator belt if you find it worn or damaged.

Tensioning the Alternator Belt

Service Interval: After the first 10 hours

Every 200 hours

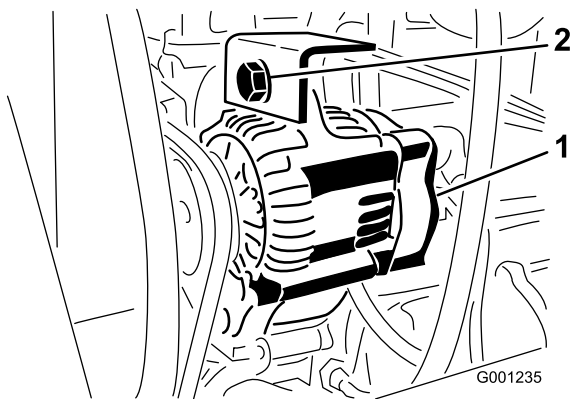


Figure 77

1. Alternator 2. Mounting bolt

1. Apply 4.5 kg (10 lb) of force against the belt at a position midway between the pulleys.
 - If the belt deflects 10 mm (3/8 inch), the belt is properly tensioned.
 - If the belt deflects more than 10 mm (3/8 inch) or less than 10 mm (3/8 inch), proceed to step 2.
2. Loosen the mounting bolt for the alternator (Figure 77)
3. Increase or decrease the tension on the alternator belt and tighten the mounting bolt (Figure 77).
4. Repeat steps 1 through 3 until the belt tension is correct.

Servicing the PTO Belt

Checking the PTO Belt Tension

Service Interval: After the first 10 hours

After the first 50 hours

Every 200 hours

1. Turn the engine off, set the parking brake, and remove the key from the key switch.
2. Raise the engine hood and allow the engine to cool.
3. Loosen the tensioning-rod jam nut (Figure 78).

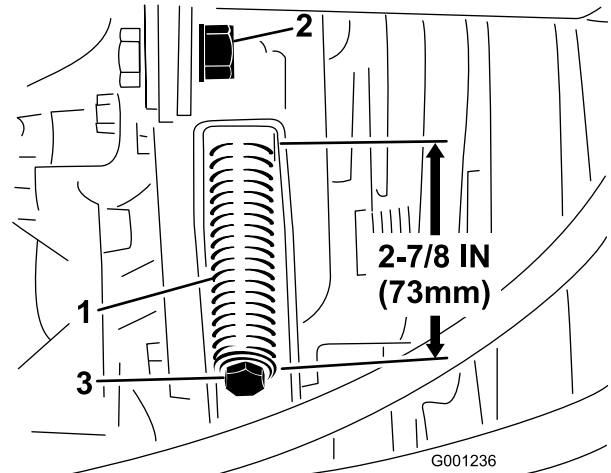


Figure 78

1. Belt-tensioning spring 3. Tension-adjusting bolt
2. Tensioning-rod jam nut

4. Use a 1/2-inch wrench to tighten or loosen the belt-tensioning spring (Figure 78). Adjust spring to a length of 273 mm (7/8 inch).
5. Tighten the jam nut.

Replacing the PTO Belt

1. Turn the engine off, set the parking brake, and remove the key from the key switch.
2. Raise the engine hood and allow the engine to cool.
3. Loosen the tensioning-rod jam nut (Figure 78).
4. Using a 1/2-inch wrench, loosen the belt-tensioning spring (Figure 78) all the way.
5. Rotate the PTO pulley toward the engine and remove the belt.
6. Install the new PTO belt and tension the pulley spring to 73 mm (2-7/8 inches) (Figure 78).
7. Tighten the jam nut (Figure 78) and close the hood.

Controls System Maintenance

Adjusting the PTO Clutch Gap

Service Interval: Every 200 hours

1. Turn the engine off, set the parking brake, and remove the key from the key switch.
2. Raise the engine hood and allow the engine to cool.
3. Adjust the air gap so that a 0.4 mm (0.015 inch) feeler gauge slides in between the clutch lining and friction plate with light pressure (Figure 79).

Note: You can decrease the gap by turning the adjusting nut clockwise (Figure 79). The maximum service gap is 0.7 mm (0.030 inch). Adjust all 3 air gaps.

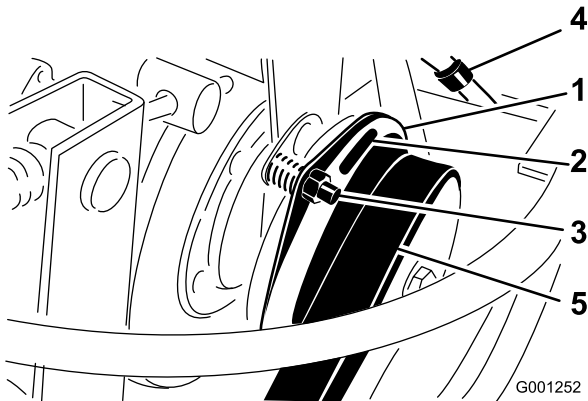


Figure 79

- | | |
|------------------------------------|-------------------------|
| 1. Clutch | 4. Electrical connector |
| 2. 0.4 mm (0.015 inch) air gap (3) | 5. PTO belt |
| 3. Adjusting nut (3) | |

4. After all 3 gaps have been set, check all 3 again.

Note: Adjusting 1 gap can alter the other gaps.

Adjusting the Traction Pedal

Adjusting the Traction-Pedal Stop

You can adjust the traction pedal for operator comfort or to reduce the maximum forward speed of the machine.

1. Move the traction pedal fully forward (Figure 80).

Note: The traction pedal should contact the traction-pedal stop before the pump reaches full stroke.

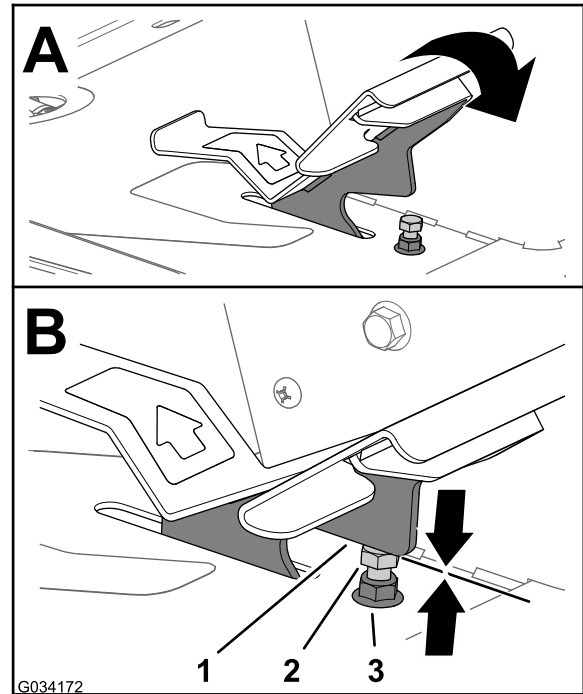


Figure 80

- | | |
|------------------------|---|
| 1. Traction pedal | 3. Jam nut (top of the foot-rest plate) |
| 2. Traction-pedal stop | |

2. If the traction pedal does not contact the traction-pedal stop or if you want to reduce the forward speed of the machine, perform the following:

- A. Hold the traction-pedal stop (Figure 80) with a wrench.
- B. Loosen the jam nut at the bottom of the foot-rest plate (Figure 81).

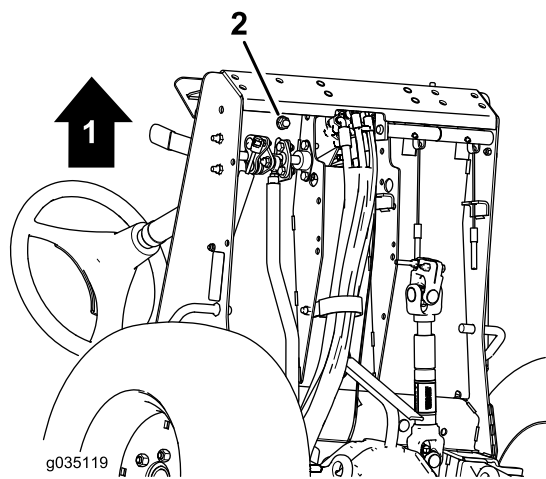


Figure 81

1. Front of the machine
2. Jam nut (bottom of the foot-rest plate)

- C. Move the traction pedal to the full forward position (Figure 80).
- D. While holding the traction-pedal stop, adjust the jam nut that is above the foot-rest plate (Figure 80) until the traction pedal makes contact with the stop.
- E. Lengthen the traction-pedal stop position by rotating the stop 1 full rotation counterclockwise away from the jam nut above the foot-rest plate.

Note: Shortening the traction-pedal stop position will increase the forward speed of the machine.

- F. While holding the traction-pedal stop, torque the jam nut at the bottom of the foot-rest plate (Figure 80 and Figure 81) to 37 to 45 N·m (27 to 33 ft·lb).
- G. Check that the traction pedal contacts the traction-pedal stop before the pump reaches full stroke.

Note: If the traction pedal does not contact the traction-pedal stop, repeat steps A through G or refer to [Adjusting the Traction Rod](#) (page 58).

Adjusting the Traction Rod

If more adjustment is required, adjust the traction rod (Figure 82) as follows:

1. Remove the bolt and nut securing traction rod end to the pedal.
2. Loosen the jam nut securing rod end to the traction rod (Figure 82).
3. Rotate the rod until you achieve the desired length.
4. Tighten the jam nut (Figure 82) and secure the rod end to the traction pedal with the bolt and nut removed to lock the angle of the foot pedal.

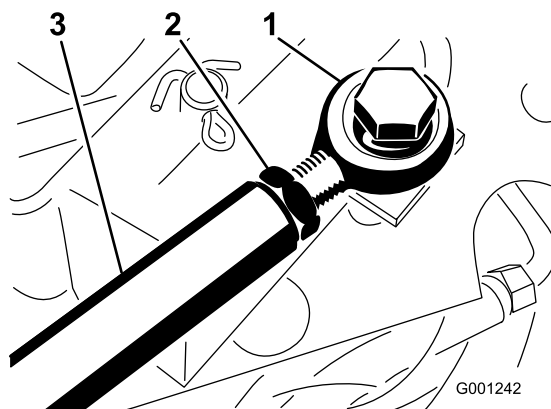


Figure 82

1. Rod end
2. Jam nut
3. Traction rod

Hydraulic System Maintenance

Hydraulic System Safety

▲ WARNING

Hydraulic fluid escaping under pressure can penetrate skin and cause injury.

- Ensure that all hydraulic-fluid hoses and lines are in good condition and all hydraulic connections and fittings are tight before applying pressure to the hydraulic system.
- Keep your body and hands away from pinhole leaks or nozzles that eject high-pressure hydraulic fluid.
- Use cardboard or paper to find hydraulic leaks.
- Safely relieve all pressure in the hydraulic system before performing any work on the hydraulic system.
- Seek immediate medical attention if fluid is injected into skin.

Hydraulic Fluid Specification

The machine's reservoir is filled at the factory with high quality hydraulic fluid.

Hydraulic system capacity: 5.6 L (6.0 qt)

Hydraulic fluid-type specification:

Toro Premium Transmission/Hydraulic Tractor Fluid
(Available in 5 gallon pails or 55 gallon drums. See parts catalog or Toro distributor for part numbers.)

Alternate fluids: If the Toro fluid is not available, you may use other petroleum-based Universal Tractor Hydraulic Fluids (UTHF) provided that its specifications fall within the listed range for all the following material properties and that it meets industry standards. We do not recommend the use of synthetic fluid. Consult with your lubricant distributor to identify a satisfactory product.

Note: Toro will not assume responsibility for damage caused by improper substitutions, so use only products from reputable manufacturers who will stand behind their recommendation.

Material Properties:

Viscosity, ASTM D445

cSt @ 40°C 55 to 62
cSt @ 100°C 9.1 to 9.8

Viscosity Index ASTM D2270

140 to 152

Pour Point, ASTM D97

-35°F to -46°F

Industry Specifications:

API GL-4, AGCO Powerfluid 821 XL, Ford New Holland FNHA-2-C-201.00, Kubota UDT, John Deere J20C, Vickers 35VQ25, and Volvo WB-101/BM

Note: Many hydraulic fluids are almost colorless, making it difficult to spot leaks. A red dye additive for the hydraulic fluid is available in 20 ml (2/3 oz) bottles. A bottle is sufficient for 15-22 L (4-6 US gallons) of hydraulic fluid. Order Part No. 44-2500 from your authorized Toro distributor.

Servicing the Hydraulic System

Preparing to Service the Hydraulic System

1. Move machine to a level surface and set the parking brake.
 2. Place all controls in the NEUTRAL position and start the engine.
 3. Run engine at lowest possible engine speed to purge the system of air.
- Important: Do not run the PTO.**
4. Cycle steering wheel several times fully to the left and right, and align the steering wheels straight forward.

Checking the Hydraulic System and Fluid Level

Service Interval: Before each use or daily Check the level of the hydraulic fluid before the engine is first started and daily thereafter.

Note: The transaxle housing acts as the reservoir for the hydraulic system.

1. Raise the deck to extend the deck-lift cylinders, shut off the engine, and remove the key from the key switch.
2. Loosen dipstick cap (Figure 83) and remove the dipstick from transaxle filler tube and wipe the dipstick with a clean rag.

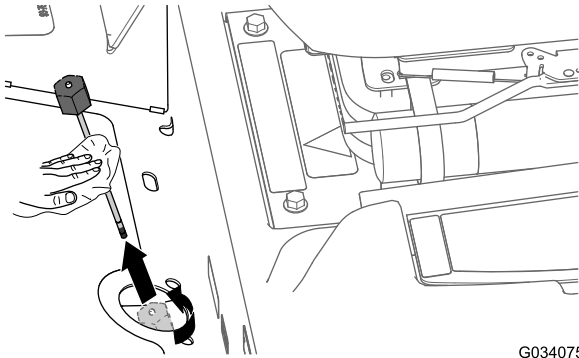


Figure 83

G034075

3. Insert the dipstick into the fill tube and thread dipstick cap onto the tube.
4. Remove the dipstick and check the fluid level (Figure 84).

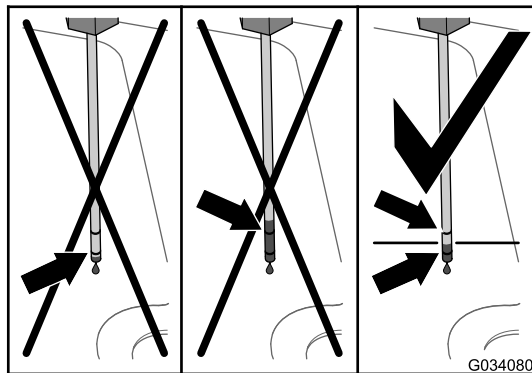
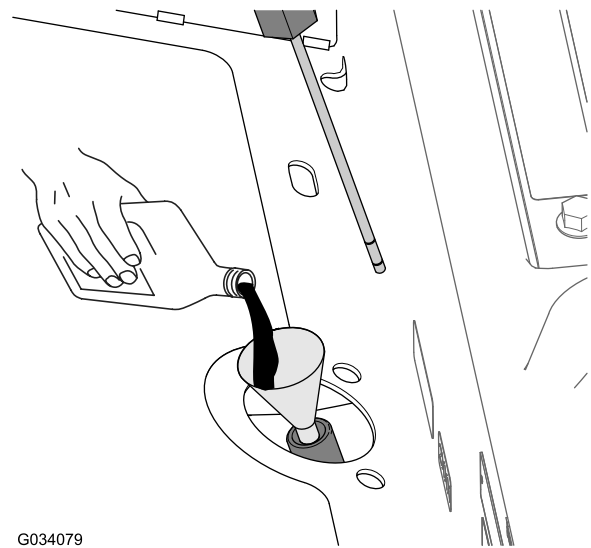


Figure 84

G034080

5. If the fluid level is below the lower mark of the dipstick, add the specified hydraulic fluid into the fill tube (Figure 85) until fluid level rises between the upper and lower marks when checked with the dipstick (Figure 84); refer to Hydraulic Fluid Specification (page 59).

Important: Do not fill the transaxle housing with hydraulic fluid above the upper mark of the dipstick.



G034079

Figure 85

6. Thread the dipstick fill cap onto the filler tube.
Note: Do not tighten the cap with a wrench.
7. Check all hoses and fittings for leaks.

Changing the Hydraulic Fluid And Filter

Service Interval: After the first 10 hours—Change the hydraulic fluid filter. Do not exceed 10 hours or you will damage the hydraulic system.

Every 200 hours—Change the hydraulic fluid filter.

Every 1,500 hours—Replace the hydraulic fluid.

Hydraulic fluid capacity: approximately 5.6 L (6 US qt)

1. Lower the deck to the shop floor, shut off the engine, and remove the key from the key switch.
2. Block the 2 rear wheels.
3. Jack up both sides of the front axle and support it with jack stands.
4. Replace the hydraulic filter (Figure 86).

Note: Drain pan capacity: a 5.6 L (6 US qt) capacity or greater

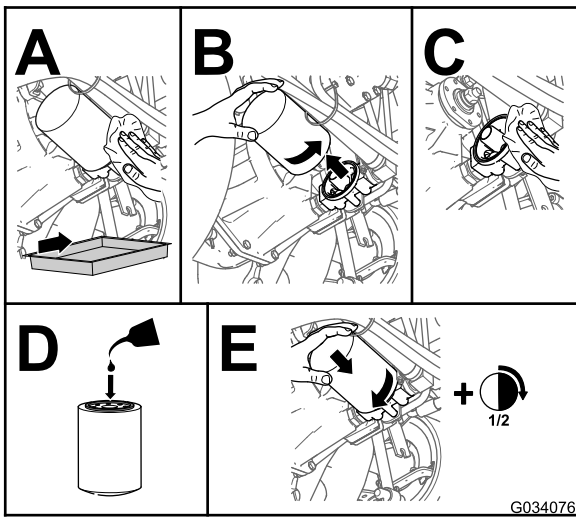


Figure 86

Storage

Storing the Battery

- Service the battery and cables as follows:
 1. Remove the battery terminals from the battery posts.
 2. Clean the battery, terminals, and posts with a wire brush and baking-soda solution.
 3. Coat the cable terminals and battery posts with Grafo 112X skin-over grease (Toro Part No. 505-47) or petroleum jelly to prevent corrosion.
 4. If you plan to store the machine more than 30 days, remove the battery and charge it fully.

Note: Slowly charge the battery for 24 hours every 60 days to prevent lead sulfation of the battery.

- Store the battery on the shelf on the machine.
- Leave the cables disconnected if the battery is stored in the machine.
- Store the battery in a cool atmosphere to avoid quick deterioration of the charge in the battery.
- To prevent the battery from freezing, ensure that it is fully charged. The specific gravity of the electrolyte in a fully charged battery is between 1.265 to 1.299.

Preparing the Machine

1. Thoroughly clean the machine, deck and the engine, paying special attention to these areas:
 - Radiator and radiator screen
 - Underneath the deck
 - Under the deck belt covers
 - PTO shaft assembly
 - All grease fittings and pivot points
 - Remove the control panel and clean out inside of the control box
 - Beneath the seat plate and top of the transmission
2. Check and adjust the air pressure in the tires; refer to [Checking the Air Pressure in the Tires \(page 26\)](#)
3. Remove, sharpen, and balance the mower blades; refer to the *Operator's Manual* for your mower deck.
4. Check for loose fasteners and tighten them as necessary.
5. Lubricate all grease fittings and apply oil to pivot points and the transmission bypass-valve pins. Wipe clean any excess lubricant.
6. Lightly sand and use touch-up paint on painted areas that are scratched, chipped or rusted. Repair any dents in the metal body.

5. Remove jack stands and lower the machine.
6. Add the specified hydraulic fluid into the fill tube ([Figure 85 in Checking the Hydraulic System and Fluid Level \(page 60\)](#)) until the fluid level in the transaxle housing (reservoir) shows at the midpoint between the upper and lower marks of the dipstick ([Figure 84 in Checking the Hydraulic System and Fluid Level \(page 60\)](#)); refer to [Hydraulic Fluid Specification \(page 59\)](#).

Important: Do not fill the transaxle housing with hydraulic fluid above the upper mark of the dipstick.

7. Start the engine, cycle the steering wheel and deck-lift cylinders, and check for oil leaks. Allow the engine to run for about 5 minutes, then shut it off.
8. After 2 minutes, check the level of the hydraulic fluid; refer to [Checking the Hydraulic System and Fluid Level \(page 60\)](#).

Preparing the Engine

1. Change the engine oil and oil filter; refer to [Changing the Engine Oil And Filter \(page 42\)](#).
2. Start the engine and run it at idle speed for 2 minutes.
3. Shut off the engine.
4. Drain the fuel from the fuel tank, fuel lines, pump, filter, and separator.
5. Flush the fuel tank with clean diesel fuel and connect all fuel lines.
6. Thoroughly clean and service the air-cleaner assembly; refer to [Servicing the Air Cleaner \(page 40\)](#).
7. Seal the air-cleaner inlet and the exhaust outlet with weatherproof masking tape.
8. Secure all fuel-system fittings.
9. Check the anti-freeze protection level of the cooling system and adjust the concentration of the coolant as needed for expected minimum temperature in your area.
10. Check the oil-filler cap and fuel-tank cap to ensure that they are installed securely.

International Distributor List

Distributor:	Country:	Phone Number:	Distributor:	Country:	Phone Number:
Agrolanc Kft	Hungary	36 27 539 640	Maquiver S.A.	Colombia	57 1 236 4079
Asian American Industrial (AAI)	Hong Kong	852 2497 7804	Maruyama Mfg. Co. Inc.	Japan	81 3 3252 2285
B-Ray Corporation	Korea	82 32 551 2076	Mountfield a.s.	Czech Republic	420 255 704 220
Brisa Goods LLC	Mexico	1 210 495 2417	Mountfield a.s.	Slovakia	420 255 704 220
Casco Sales Company	Puerto Rico	787 788 8383	Munditol S.A.	Argentina	54 11 4 821 9999
Ceres S.A.	Costa Rica	506 239 1138	Norma Garden	Russia	7 495 411 61 20
CSSC Turf Equipment (pvt) Ltd.	Sri Lanka	94 11 2746100	Oslinger Turf Equipment SA	Ecuador	593 4 239 6970
Cyril Johnston & Co.	Northern Ireland	44 2890 813 121	Oy Hako Ground and Garden Ab	Finland	358 987 00733
Cyril Johnston & Co.	Republic of Ireland	44 2890 813 121	Parkland Products Ltd.	New Zealand	64 3 34 93760
Fat Dragon	China	886 10 80841322	Perfetto	Poland	48 61 8 208 416
Femco S.A.	Guatemala	502 442 3277	Pratoverde SRL.	Italy	39 049 9128 128
FIVEMANS New-Tech Co., Ltd	China	86-10-6381 6136	Prochaska & Cie	Austria	43 1 278 5100
ForGarder OU	Estonia	372 384 6060	RT Cohen 2004 Ltd.	Israel	972 986 17979
G.Y.K. Company Ltd.	Japan	81 726 325 861	Riversa	Spain	34 9 52 83 7500
Geomechaniki of Athens	Greece	30 10 935 0054	Lely Turfcare	Denmark	45 66 109 200
Golf international Turizm	Turkey	90 216 336 5993	Lely (U.K.) Limited	United Kingdom	44 1480 226 800
Hako Ground and Garden	Sweden	46 35 10 0000	Solvart S.A.S.	France	33 1 30 81 77 00
Hako Ground and Garden	Norway	47 22 90 7760	Spypros Stavrinides Limited	Cyprus	357 22 434131
Hayter Limited (U.K.)	United Kingdom	44 1279 723 444	Surge Systems India Limited	India	91 1 292299901
Hydroturf Int. Co Dubai	United Arab Emirates	97 14 347 9479	T-Markt Logistics Ltd.	Hungary	36 26 525 500
Hydroturf Egypt LLC	Egypt	202 519 4308	Toro Australia	Australia	61 3 9580 7355
Irrimac	Portugal	351 21 238 8260	Toro Europe NV	Belgium	32 14 562 960
Irrigation Products Int'l Pvt Ltd.	India	0091 44 2449 4387	Valtech	Morocco	212 5 3766 3636
Jean Heybroek b.v.	Netherlands	31 30 639 4611	Victus Emak	Poland	48 61 823 8369

European Privacy Notice

The Information Toro Collects

Toro Warranty Company (Toro) respects your privacy. In order to process your warranty claim and contact you in the event of a product recall, we ask you to share certain personal information with us, either directly or through your local Toro company or dealer.

The Toro warranty system is hosted on servers located within the United States where privacy law may not provide the same protection as applies in your country.

BY SHARING YOUR PERSONAL INFORMATION WITH US, YOU ARE CONSENTING TO THE PROCESSING OF YOUR PERSONAL INFORMATION AS DESCRIBED IN THIS PRIVACY NOTICE.

The Way Toro Uses Information

Toro may use your personal information to process warranty claims, to contact you in the event of a product recall and for any other purpose which we tell you about. Toro may share your information with Toro's affiliates, dealers or other business partners in connection with any of these activities. We will not sell your personal information to any other company. We reserve the right to disclose personal information in order to comply with applicable laws and with requests by the appropriate authorities, to operate our systems properly or for our own protection or that of other users.

Retention of your Personal Information

We will keep your personal information as long as we need it for the purposes for which it was originally collected or for other legitimate purposes (such as regulatory compliance), or as required by applicable law.

Toro's Commitment to Security of Your Personal Information

We take reasonable precautions in order to protect the security of your personal information. We also take steps to maintain the accuracy and current status of personal information.

Access and Correction of your Personal Information

If you would like to review or correct your personal information, please contact us by email at legal@toro.com.

Australian Consumer Law

Australian customers will find details relating to the Australian Consumer Law either inside the box or at your local Toro Dealer.



The Toro Warranty

A Two-Year Limited Warranty

Conditions and Products Covered

The Toro Company and its affiliate, Toro Warranty Company, pursuant to an agreement between them, jointly warrant your Toro Commercial product ("Product") to be free from defects in materials or workmanship for two years or 1500 operational hours*, whichever occurs first. This warranty is applicable to all products with the exception of Aerators (refer to separate warranty statements for these products). Where a warrantable condition exists, we will repair the Product at no cost to you including diagnostics, labor, parts, and transportation. This warranty begins on the date the Product is delivered to the original retail purchaser.

* Product equipped with an hour meter.

Instructions for Obtaining Warranty Service

You are responsible for notifying the Commercial Products Distributor or Authorized Commercial Products Dealer from whom you purchased the Product as soon as you believe a warrantable condition exists. If you need help locating a Commercial Products Distributor or Authorized Dealer, or if you have questions regarding your warranty rights or responsibilities, you may contact us at:

Toro Commercial Products Service Department
Toro Warranty Company
8111 Lyndale Avenue South
Bloomington, MN 55420-1196
952-888-8801 or 800-952-2740
E-mail: commercial.warranty@toro.com

Owner Responsibilities

As the Product owner, you are responsible for required maintenance and adjustments stated in your *Operator's Manual*. Failure to perform required maintenance and adjustments can be grounds for disallowing a warranty claim.

Items and Conditions Not Covered

Not all product failures or malfunctions that occur during the warranty period are defects in materials or workmanship. This warranty does not cover the following:

- Product failures which result from the use of non-Toro replacement parts, or from installation and use of add-on, or modified non-Toro branded accessories and products. A separate warranty may be provided by the manufacturer of these items.
- Product failures which result from failure to perform recommended maintenance and/or adjustments. Failure to properly maintain your Toro product per the Recommended Maintenance listed in the *Operator's Manual* can result in claims for warranty being denied.
- Product failures which result from operating the Product in an abusive, negligent, or reckless manner.
- Parts subject to consumption through use unless found to be defective. Examples of parts which are consumed, or used up, during normal Product operation include, but are not limited to, brake pads and linings, clutch linings, blades, reels, rollers and bearings (sealed or greasable), bed knives, spark plugs, castor wheels and bearings, tires, filters, belts, and certain sprayer components such as diaphragms, nozzles, and check valves, etc.
- Failures caused by outside influence. Conditions considered to be outside influence include, but are not limited to, weather, storage practices, contamination, use of unapproved fuels, coolants, lubricants, additives, fertilizers, water, or chemicals, etc.
- Failure or performance issues due to the use of fuels (e.g. gasoline, diesel, or biodiesel) that do not conform to their respective industry standards.

Countries Other than the United States or Canada

Customers who have purchased Toro products exported from the United States or Canada should contact their Toro Distributor (Dealer) to obtain guarantee policies for your country, province, or state. If for any reason you are dissatisfied with your Distributor's service or have difficulty obtaining guarantee information, contact the Toro importer.

- Normal noise, vibration, wear and tear, and deterioration.
- Normal "wear and tear" includes, but is not limited to, damage to seats due to wear or abrasion, worn painted surfaces, scratched decals or windows, etc.

Parts

Parts scheduled for replacement as required maintenance are warranted for the period of time up to the scheduled replacement time for that part. Parts replaced under this warranty are covered for the duration of the original product warranty and become the property of Toro. Toro will make the final decision whether to repair any existing part or assembly or replace it. Toro may use remanufactured parts for warranty repairs.

Deep Cycle and Lithium-Ion Battery Warranty:

Deep cycle and Lithium-Ion batteries have a specified total number of kilowatt-hours they can deliver during their lifetime. Operating, recharging, and maintenance techniques can extend or reduce total battery life. As the batteries in this product are consumed, the amount of useful work between charging intervals will slowly decrease until the battery is completely worn out. Replacement of worn out batteries, due to normal consumption, is the responsibility of the product owner. Battery replacement may be required during the normal product warranty period at owner's expense. Note: (Lithium-Ion battery only): A Lithium-Ion battery has a part only prorated warranty beginning year 3 through year 5 based on the time in service and kilowatt hours used. Refer to the *Operator's Manual* for additional information.

Maintenance is at Owner's Expense

Engine tune-up, lubrication, cleaning and polishing, replacement of filters, coolant, and completing recommended maintenance are some of the normal services Toro products require that are at the owner's expense.

General Conditions

Repair by an Authorized Toro Distributor or Dealer is your sole remedy under this warranty.

Neither The Toro Company nor Toro Warranty Company is liable for indirect, incidental or consequential damages in connection with the use of the Toro Products covered by this warranty, including any cost or expense of providing substitute equipment or service during reasonable periods of malfunction or non-use pending completion of repairs under this warranty. Except for the Emissions warranty referenced below, if applicable, there is no other express warranty. All implied warranties of merchantability and fitness for use are limited to the duration of this express warranty.

Some states do not allow exclusions of incidental or consequential damages, or limitations on how long an implied warranty lasts, so the above exclusions and limitations may not apply to you. This warranty gives you specific legal rights, and you may also have other rights which vary from state to state.

Note regarding engine warranty:

The Emissions Control System on your Product may be covered by a separate warranty meeting requirements established by the U.S. Environmental Protection Agency (EPA) and/or the California Air Resources Board (CARB). The hour limitations set forth above do not apply to the Emissions Control System Warranty. Refer to the Engine Emission Control Warranty Statement supplied with your product or contained in the engine manufacturer's documentation for details.