



Count on it.

Parts Catalog

**SGR-6
Stump Grinder**

Model No. 22600—Serial No. 316000001 and Up



Ordering Replacement Parts

To order replacement parts, please supply the part number, the quantity, and the description of each part desired.

Understanding Reference Numbers

Each identified part in an illustration has a reference number. The reference number for a part also appears in the parts list, along with other information about the part.

This catalog uses two special reference number formats, one to indicate parts in a service assembly and another to indicate the quantity of a given part in an illustration.

Service Assembly Reference Numbers

Parts in service assemblies have reference numbers in the form a:b. The a represents the reference number of the entire service assembly and the b represents a sequential number unique to each part within the service assembly.

For example, a wheel assembly might be identified by reference number 6, the tire by 6:1, the valve by 6:2, and the wheel by 6:3. When you order the assembly identified by reference number 6, you receive all parts identified by reference numbers 6:1, 6:2, and 6:3. However, you may also order any part individually. Reference numbers of this type appear in illustration and in parts lists.

Reference Numbers Indicating Quantity

In an illustration, if a reference number indicates more than one part, the reference number has the form nX y. The n represents the quantity of the part, the X is the multiplication symbol, and the y represents the reference number.

For example, in an illustration, the reference number 2X 37 means that two of the parts identified by reference number 37 are indicated.

List of Abbreviations

AR: as required

ASM: assembly

BBC: blade brake control

BHTF: button head thread forming

CARR: carriage

CCW: counter clockwise

CW: clockwise

DEG: degrees

DPA: Dual Point Adjustment

ECM: electronic control module

EXT: external

FH: flat head

GA: gauge

HD: heavy-duty

HF: hex flange

HH: hex head

HHF: hex head flange

HHFTF: hex head flange thread forming

HJ: hex jam

HLH: hex lag head

HOC: height-of-cut

HP: high pressure

HSBH: hex socket button head

HSFH: hex socket flat head

HSH: hex socket head

HWH: hex washer head

HWHTF: hex washer head thread forming

HYD: hydraulic

LH: left hand

LP: low pressure

LPG: Liquefied Petroleum Gas

NI: nylon insert

NPTF: national pipe thread fine

PFH: phillips flat head

PPH: phillips pan head

PPHTF: phillips pan head thread forming

PRH: phillips round head

PTH: phillips truss head

PTO: power-take-off

RH: right hand

ROPS: roll-over protection system

RRB: rear roller brush

SFH: slotted fillister head

SHH: slotted hex head

SHWH: slotted hex washer head

SPH: slotted pan head

SQH: square head

SRH: slotted round head

STD: standard

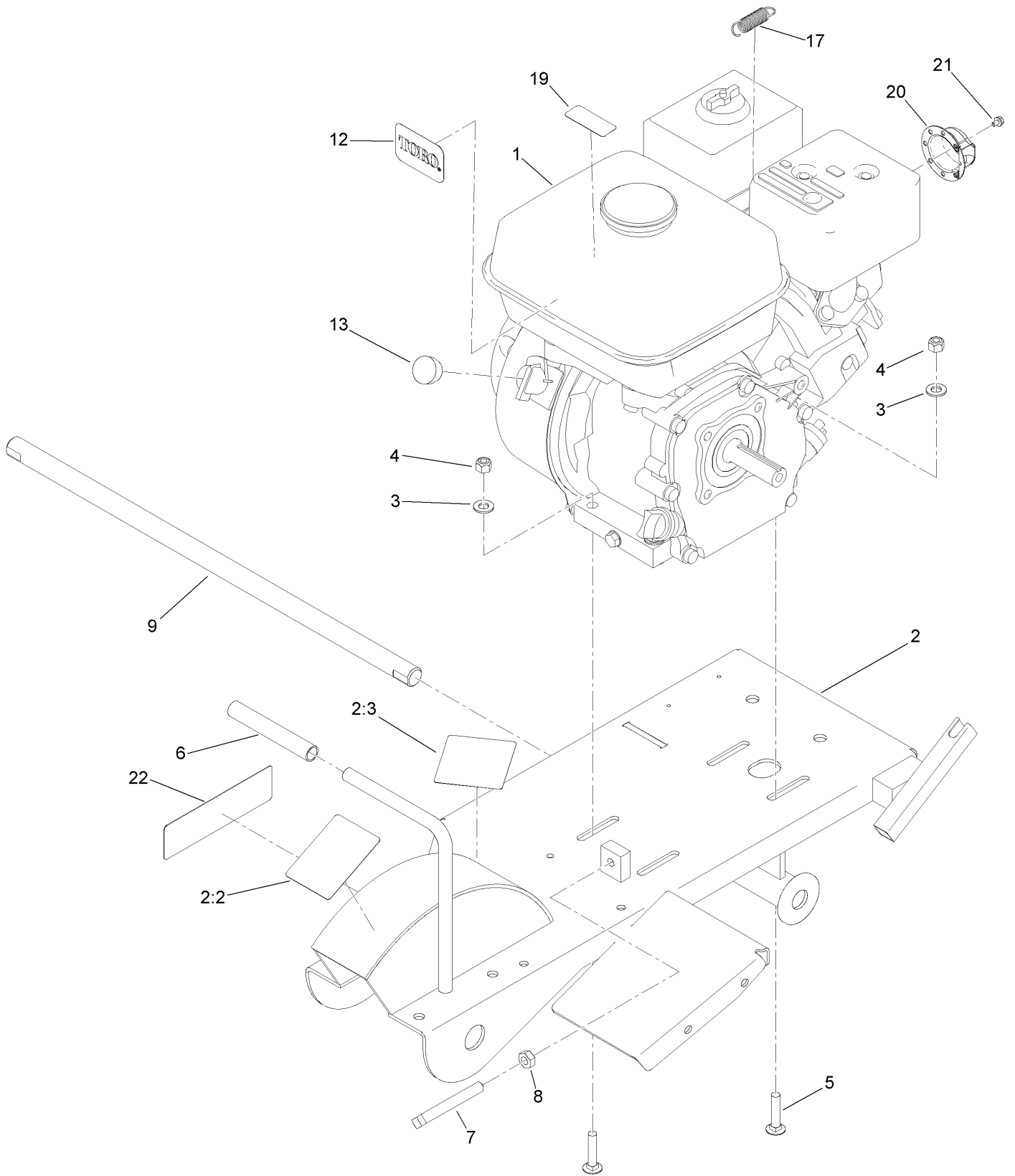
TAP: self tapping

TTH: torx truss head

Contents

- Engine and Frame Assembly 4
- Handle Assembly 6
- 3-Tooth Grinder Wheel Assembly 8
- Brake and Wheel Assembly 10
- Flap Assembly 12
- Belt Drive Assembly 14
- Attachments and Accessories 16

Engine and Frame Assembly



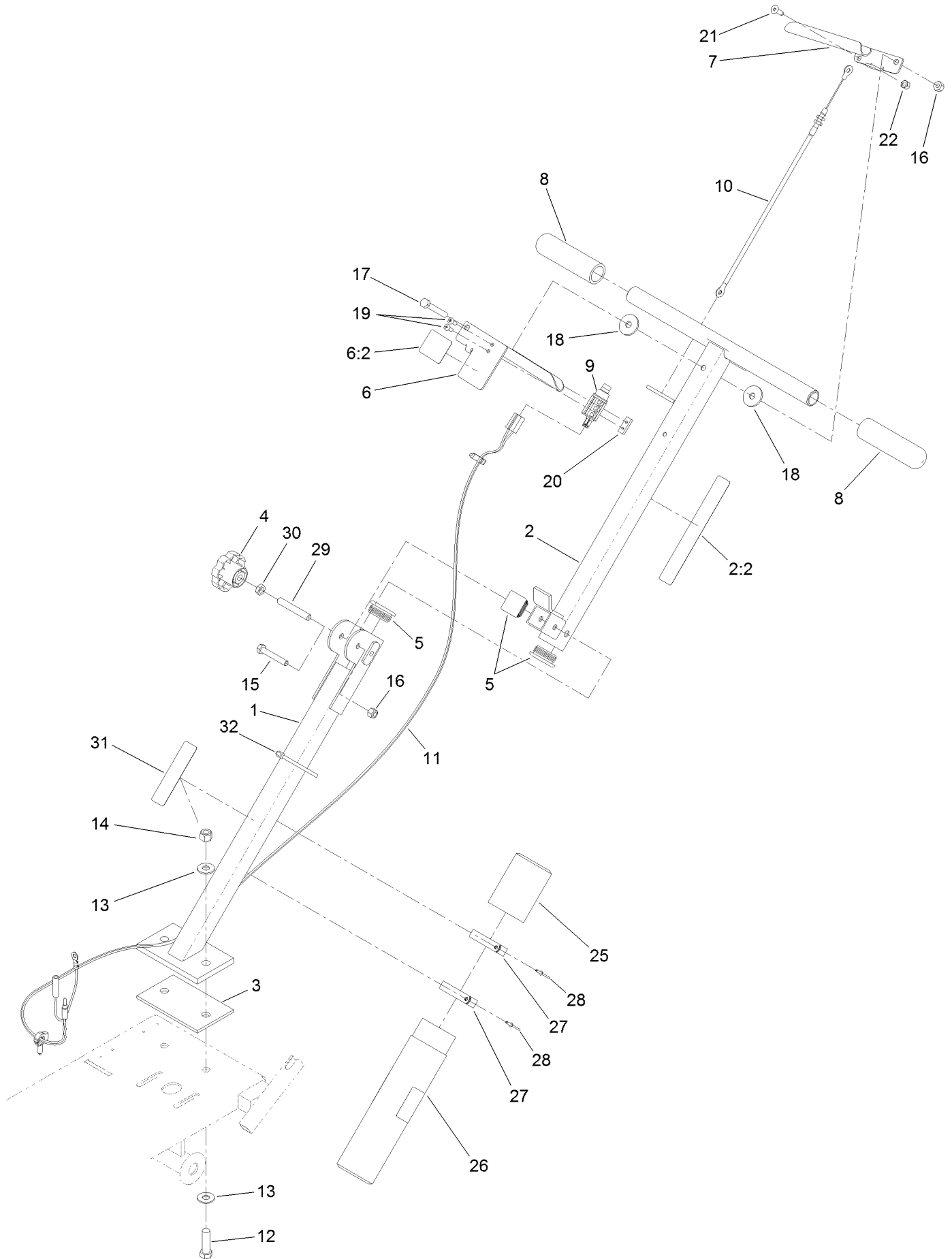
Engine and Frame Assembly (continued)

<i>Ref.</i>	<i>Part Number</i>	<i>Qty.</i>	<i>Description</i>	<i>Ref.</i>	<i>Part Number</i>	<i>Qty.</i>	<i>Description</i>
1		1	Engine-Honda, Gx200Ut Qxc9 ●■	8	3217-7	1	Nut-Hex
2	132-3965	1	Frame ASM	9	120-1795	1	Bar-Axle, Wheel
2:2	119-4693	1	Decal-Caution	12	98-3206	1	Decal
2:3	119-4690	1	Decal-Danger	13	120-1887	1	Plug-Engine
3	3256-45	4	Washer-Flat	17	119-4609	1	Spring-Extension
4	3296-29	4	Nut-Lock, NI	19	130-8322	1	Decal-Warning, Ethanol
5	3230-4	4	Screw-CARR	20	125-3866	1	Deflector
6	112-2605	1	Grip-Rubber	21	127-7578	1	Screw-HWH
7	119-4729	1	Screw-Set, SQH	22	132-4004	1	Decal-Rotate Tooth

● Not serviced separately

■ Obtain parts from www.honda-engines.com

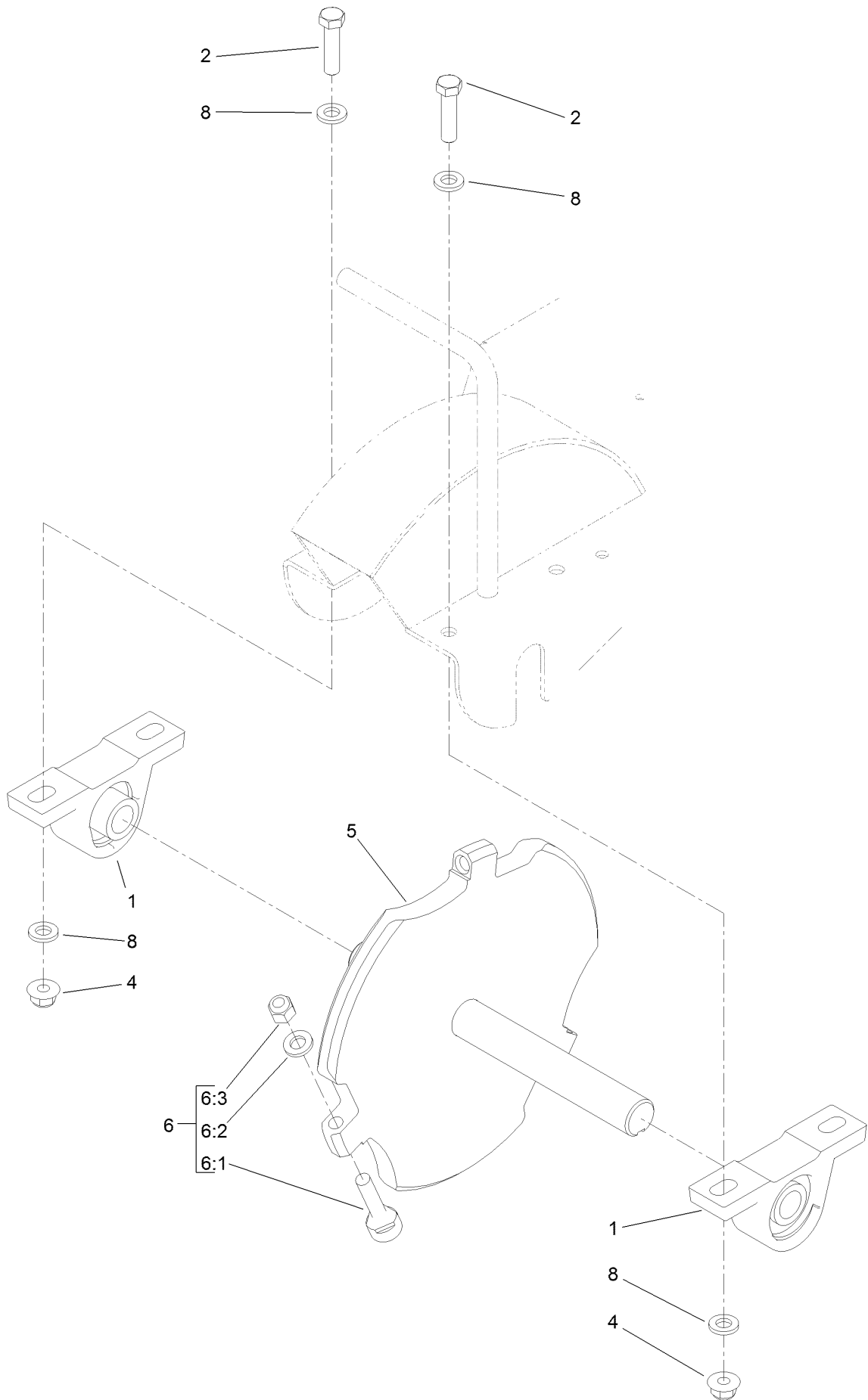
Handle Assembly



Handle Assembly (continued)

<i>Ref.</i>	<i>Part Number</i>	<i>Qty.</i>	<i>Description</i>	<i>Ref.</i>	<i>Part Number</i>	<i>Qty.</i>	<i>Description</i>
1	120-1323-01	1	Handle-Lower	15	322-10	1	Screw-HH
2	121-4394	1	Handle ASM	16	3296-29	2	Nut-Lock, NI
2:2	119-4691	1	Decal-Caution	17	322-11	1	Screw-HH
3	120-1324	1	Gasket-Handle	18	107675	2	Washer
4	109-1092	1	Knob	19	1-803071	2	Screw
5	120-1302	3	Plug-Tube	20	1-633181	1	Plate-Tapped
6	132-4121	1	Plunger Handle ASM	21	116-0606	1	Screw-Torx
6:2	119-4722	1	Decal-Engage	22	3296-42	1	Nut-Lock, NI
7	120-1359-03	1	Handle-Throttle	25	104-7048	1	Cap-Housing
8	120-1333	2	Grip-Handle	26	104-7050	1	Tube-Manual
9	120-1292	1	Switch-Plunger, Nc (W/Cover)	27	2412-120	2	Clamp-R
10	120-1375	1	Cable-Throttle	28	3269-17	2	Rivet-Pop
11	120-1369	1	Harness-Wire	29	120-0909	1	Screw-HSH
12	324-6	2	Screw-HH	30	3218-3	1	Nut-Jam
13	3256-4	4	Washer-Flat	31	117-2718	1	Decal-Arrester, Spark
14	3296-48	2	Nut-Lock, NI	32	3290-379	2	Tie-Cable

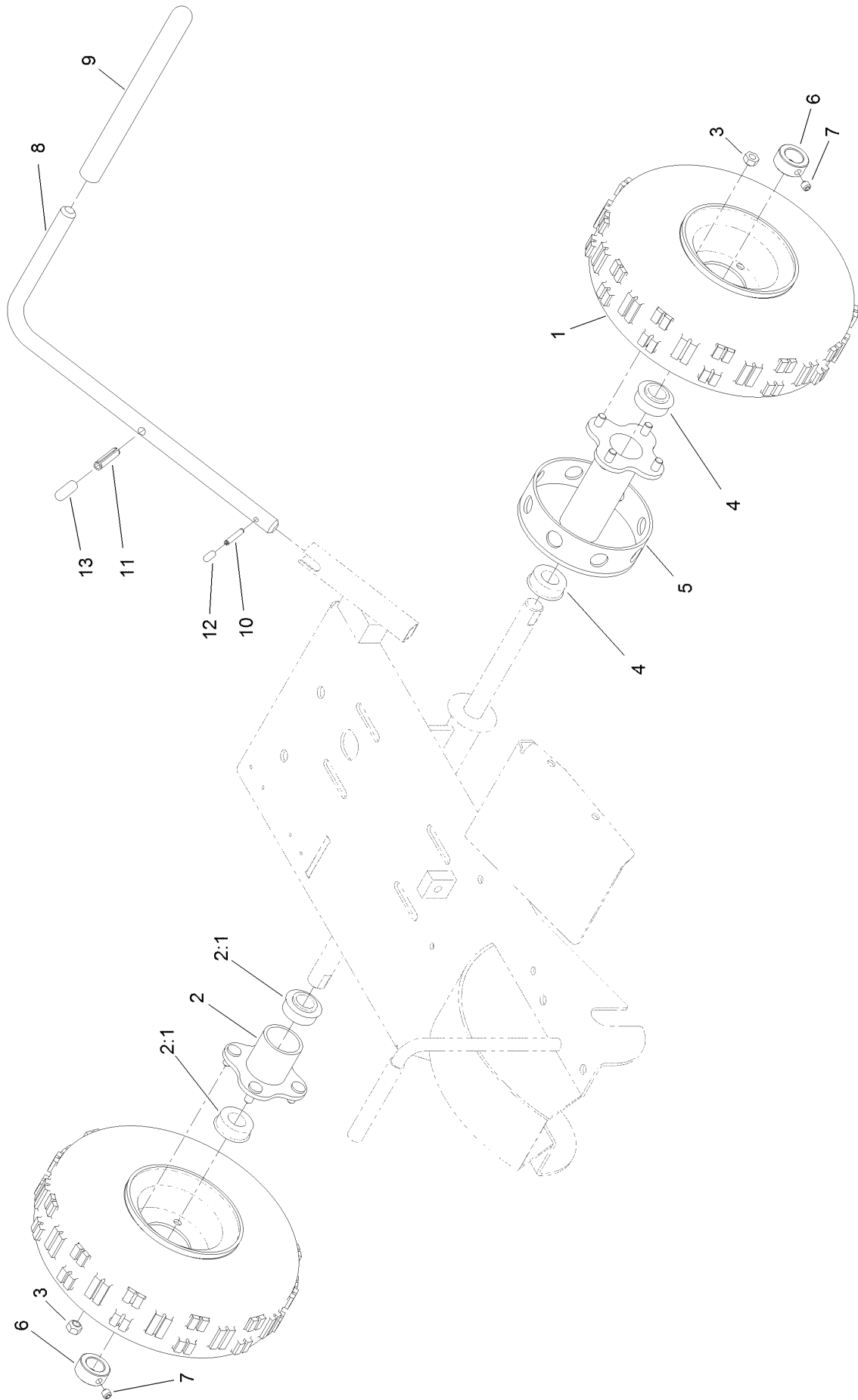
3-Tooth Grinder Wheel Assembly



3-Tooth Grinder Wheel Assembly (continued)

<i>Ref.</i>	<i>Part Number</i>	<i>Qty.</i>	<i>Description</i>	<i>Ref.</i>	<i>Part Number</i>	<i>Qty.</i>	<i>Description</i>
1	120-1373	2	Bearing	6	132-4008	1	Grinder Tooth Kit (6-Pack)
2	323-8	4	Screw-HH	6:1	130-2224	1	Tooth-Grinder
4	104-8301	4	Nut-Flange, NI	6:2	107-1413	1	Washer-Hardened
5	132-4010	1	Wheel-Grinder	6:3	112-0236	1	Nut-Lock
6	132-4006	3	Grinder Tooth Kit (Single)	8	100-4852	8	Washer-Hardened
6	132-4007	1	Grinder Tooth Kit (3-Pack)				

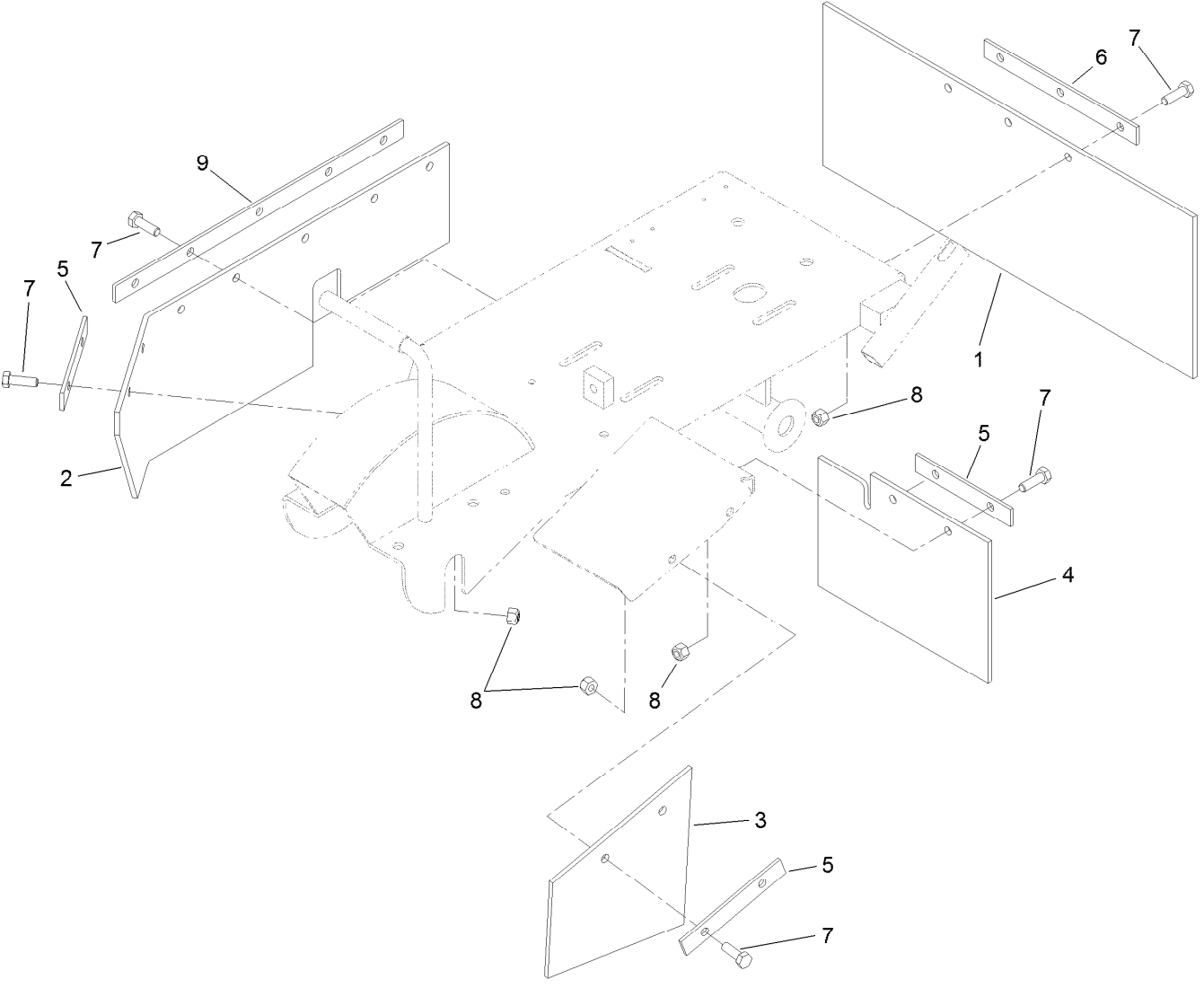
Brake and Wheel Assembly



Brake and Wheel Assembly (continued)

<i>Ref.</i>	<i>Part Number</i>	<i>Qty.</i>	<i>Description</i>	<i>Ref.</i>	<i>Part Number</i>	<i>Qty.</i>	<i>Description</i>
1	120-1288	2	Wheel And Tire ASM	7	3246-2	2	Screw-Set, HSH
2	120-1295	1	Hub	8	120-1309-01	1	Handle-Brake
2:1	120-1296	2	Bearing-Wheel	9	119-0222	1	Grip
3	120-1304	8	Nut-Wheel	10	32121-6	1	Pin-Roll, Slotted
4	120-1296	2	Bearing-Wheel	11	32121-25	1	Pin-Roll
5	120-1325-03	1	Hub-Brake	12	119-4741	1	Cap-Lower
6	120-1294	2	Collar-Set	13	119-4742	1	Cap-Upper

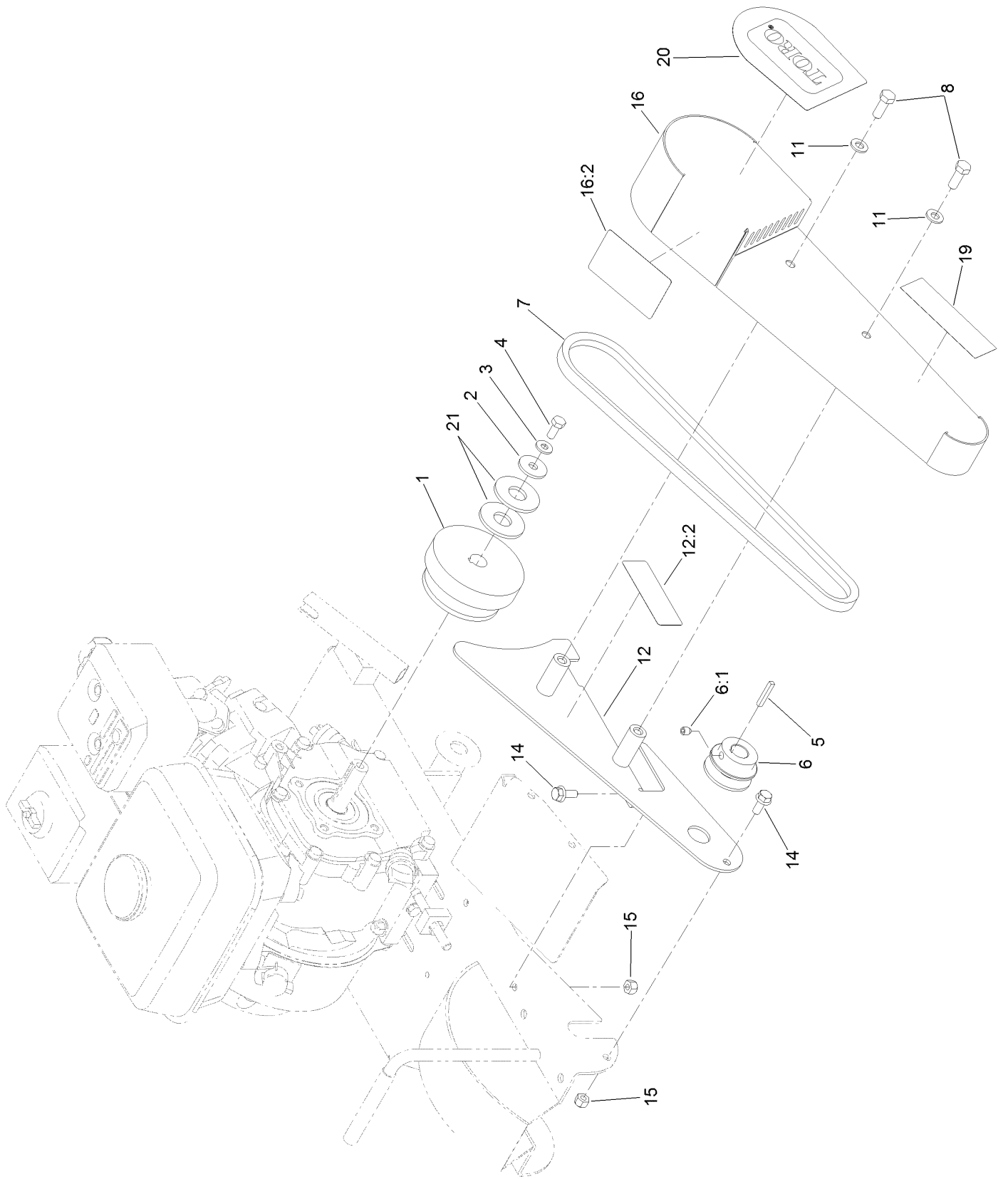
Flap Assembly



Flap Assembly (continued)

<i>Ref.</i>	<i>Part Number</i>	<i>Qty.</i>	<i>Description</i>	<i>Ref.</i>	<i>Part Number</i>	<i>Qty.</i>	<i>Description</i>
1	120-5355	1	Flap-Rear	6	120-1246-01	1	Bracket-Support, Flap
2	120-5352	1	Flap-Right	7	322-5	14	Screw-HH
3	120-1313	1	Flap-Wing	8	3296-29	14	Nut-Lock, NI
4	120-5353	1	Flap-Wing, Rear	9	120-5354-01	1	Plate-Mounting, Flap
5	120-1315-01	3	Plate-Mounting, Flap				

Belt Drive Assembly



Belt Drive Assembly (continued)

<i>Ref.</i>	<i>Part Number</i>	<i>Qty.</i>	<i>Description</i>	<i>Ref.</i>	<i>Part Number</i>	<i>Qty.</i>	<i>Description</i>
1	120-1215	1	Clutch-Centrifugal	12	132-4125	1	Plate-Guard, Inner
2	63-8410	1	Washer	12:2	117-4979	1	Decal-Warning, Shields
3	3256-2	1	Washer-Flat	14	3234-47	3	Screw-HHF
4	3210-3	1	Screw-HH	15	3296-29	3	Nut-Lock, NI
5	92-2649	1	Key-Square	16	121-4412	1	Belt Guard ASM
6	120-1303	1	Pulley-Front	16:2	119-4692	1	Decal-Caution
6:1	3246-3	1	Screw-HSH	19	120-1815	1	Decal
7	120-1374	1	Belt-Drive	20	119-4723	1	Decal
8	323-6	2	Screw-HH	21	3256-8	2	Washer-Flat
11	3256-38	2	Washer-Flat				

Attachments and Accessories

For 22600 SGR-6 Stump Grinder

Product Name	Model/Part
Wheel Tooth Kit.....	132-4006
3-Pack Wheel Tooth Kit.....	132-4007
6-Pack Wheel Tooth Kit.....	132-4008

Notes:

Notes:

Notes:



Count on it.