

# Turf Striper Kit

Kit No. 126-7882

## Installation Instructions

For Serial Nos. 400,000,000 & Higher

### ⚠ WARNING

#### CALIFORNIA Proposition 65 Warning

This product contains a chemical or chemicals known to the State of California to cause cancer, birth defects, or reproductive harm.

## Loose Parts

Use the chart below to verify that all parts have been shipped.

Item	Part No.	Description	Qty	Item	Part No.	Description	Qty
1	1-303007	Washer	2	6	116-6645	Roller-Striper Center	1
2	104-8301	Nut-Nyloc 3/8-16 Flg	8	7	126-7886-01	Bracket-Deck Mount RH	1
3	116-6075	Bracket-Roller Mount LH	1	8	126-7887-01	Bracket-Deck Mount LH	1
4	116-6076	Bracket-Roller Shaft RH	1	9	3231-2	Bolt-Carriage 3/8-16 x 1	8
5	116-6077	Roller-Striper End	2	10	32120-72	Ring-Snap	2

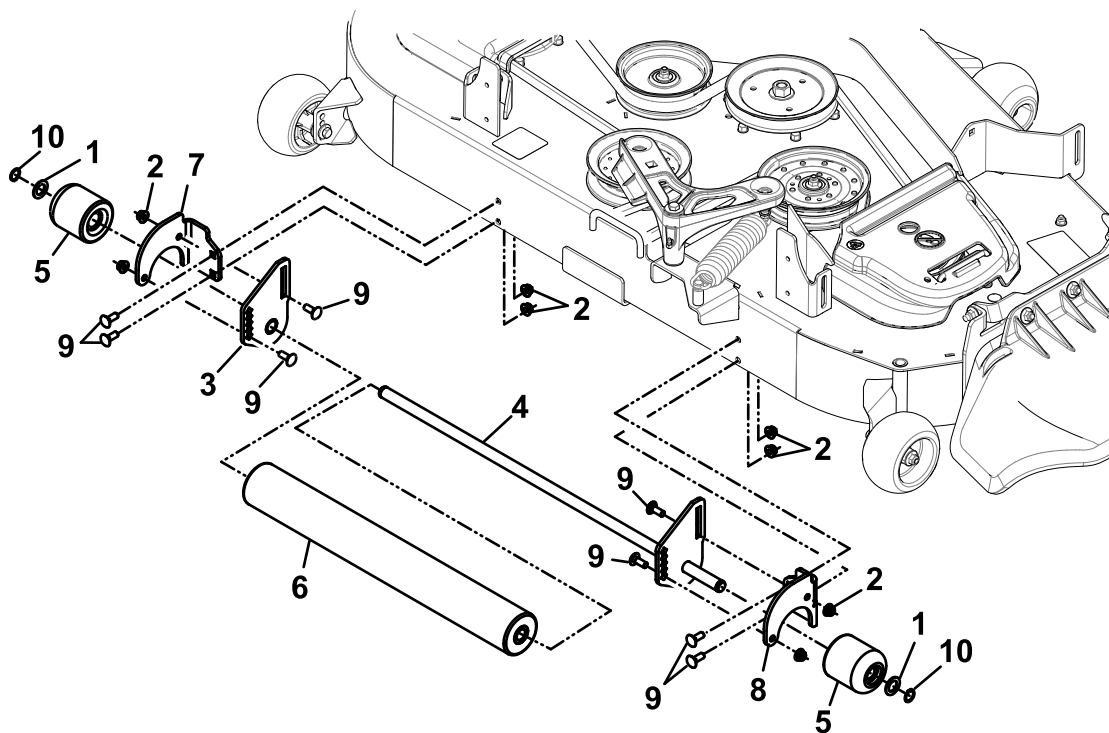


Figure 1

G035588



## Safety Alert Symbol

This Safety Alert Symbol (Figure 2) is used both in this instruction sheet and on the machine to identify important safety messages which must be followed to avoid accidents

This symbol means: **ATTENTION! BECOME ALERT! YOUR SAFETY IS INVOLVED!**



**Figure 2**  
Safety Alert Symbol

The safety alert symbol appears above information which alerts you to unsafe actions or situations and will be followed by the word **DANGER**, **WARNING**, or **CAUTION**.

**DANGER:** Indicates an imminently hazardous situation which, if not avoided, **Will** result in death or serious injury.

**WARNING:** Indicates a potentially hazardous situation which, if not avoided, **Could** result in death or serious injury.

**CAUTION:** Indicates a potentially hazardous situation which, if not avoided, **May** result in minor or moderate injury.

This manual uses two other words to highlight information. **Important** calls attention to special mechanical information and **Note** emphasizes general information worthy of special attention.

### **⚠ WARNING**

While maintenance or adjustments are being made, someone could start the engine. Accidental starting of the engine could seriously injure you or other bystanders.

Remove the key from the ignition switch, engage parking brake, and pull the wire(s) off the spark plug(s) before you do any maintenance. Also push the wire(s) aside so it does not accidentally contact the spark plug(s).

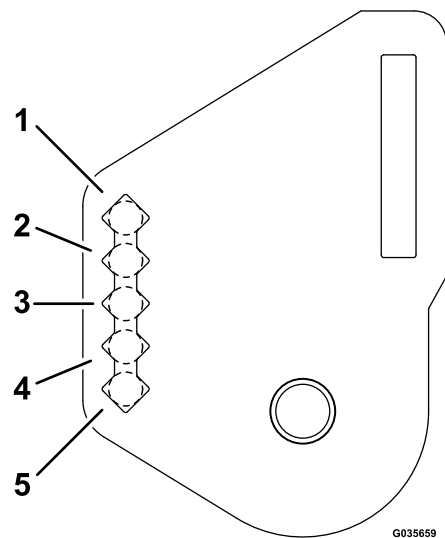
**Note:** Determine the left and right sides of the machine from the normal operating position.

**Note:** Park the unit on a level surface. Make sure all moving parts have stopped, parking brake is engaged, the key has been removed, and the spark plug wire has been disconnected. Allow unit to cool before starting these instructions.

## Installing the Turf Striper to the Deck

1. Raise the deck to the transport position.
2. Using two 3/8-16 x 1 inch carriage bolts and two 3/8 inch nyloc nuts, loosely assemble the RH deck mount bracket to the RH roller shaft bracket in the lowest setting.
3. Using two 3/8-16 x 1 inch carriage bolts and two 3/8 inch nyloc nuts, loosely assemble the LH deck mount bracket to the LH roller mount bracket in the lowest setting.
4. Install the LH roller mount bracket assembly on the backside of the deck as shown in Figure 1, using the hardware indicated.
5. Slide the center roller onto the RH roller shaft bracket assembly as shown in Figure 1.
6. Insert the RH roller shaft assembly into the LH roller shaft bracket assembly.
7. Mount the roller assembly onto the RH bracket using two 3/8-16 x 1 inch carriage bolts and two 3/8-16 nyloc nuts.
8. Install one roller end onto each side of the shaft; install washer and secure with a retaining ring as shown in
9. Tighten all hardware.

**Note:** If the unit will be mowing at different heights, set the Turf Striper at the setting for the lowest cutting height that will be used.



**Figure 3**

- |                               |                           |
|-------------------------------|---------------------------|
| 1. 5 inches & Higher (127 mm) | 4. 2-3 inches (51-76 mm)  |
| 2. 4-5 inches (102-127 mm)    | 5. Below 2 inches (51 mm) |
| 3. 3-4 inches (76-127 mm)     |                           |

**Note:** Periodically check for loose mounting hardware and tighten if necessary.