



# ROPS Beacon Kit

Workman® MD or HD Series Utility Vehicle

Model No. 133-0609

## Installation Instructions

### ▲ WARNING

#### CALIFORNIA Proposition 65 Warning

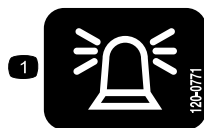
This product contains a chemical or chemicals known to the State of California to cause cancer, birth defects, or reproductive harm.

## Safety

### Safety and Instructional Decals

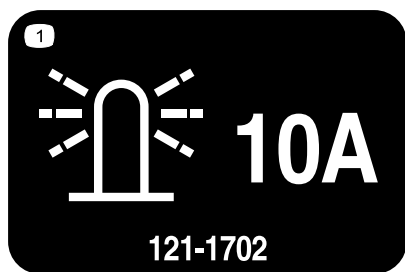


Safety decals and instructions are easily visible to the operator and are located near any area of potential danger. Replace any decal that is damaged or lost.



120-0771

1. Beacon



121-1702

121-1702

1. Beacon—10 A



# Installation

## Loose Parts

Use the chart below to verify that all parts have been shipped.

Procedure	Description	Qty.	Use
<b>1</b>	No parts required	–	Prepare the machine.
<b>2</b>	Wire harness Cable tie	1 8	Route the wire harness.
<b>3</b>	Beacon bracket U-bolt Flange nut (3/8 inch) Beacon socket Beacon assembly	1 2 4 1 1	Install the beacon assembly.
<b>4</b>	Rocker switch Beacon-light decal	1 1	Install the rocker switch.
<b>5</b>	Fuse (10 A) Fuse decal	1 1	Connect the wire harness to the ground-block terminal and install the fuse.
<b>6</b>	No parts required	–	Connect the battery.
<b>7</b>	No parts required	–	Test the beacon function.

# 1

## Preparing the Machine

### No Parts Required

### Procedure

1. Park the machine on a level surface, set the parking brake, shut off the engine, and remove the key.
2. Disconnect the negative battery cable; refer to your *Operator's Manual*.
3. Open the hood.

# 2

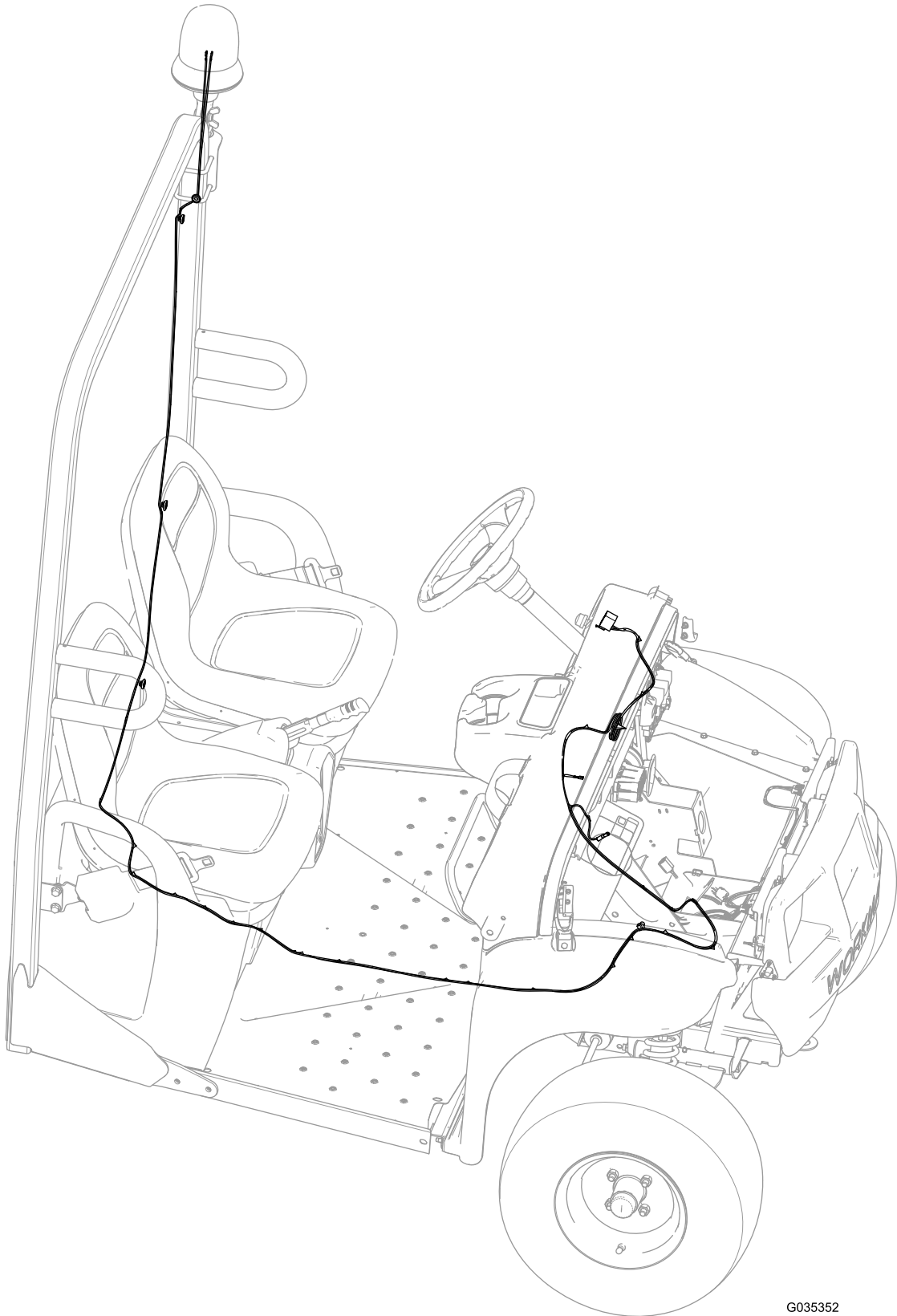
## Routing the Wire Harness

### Parts needed for this procedure:

1	Wire harness
8	Cable tie

## For MD Utility Vehicles

Route the wire harness as shown in [Figure 1](#) and secure the wire harness to the machine with cable ties as necessary.

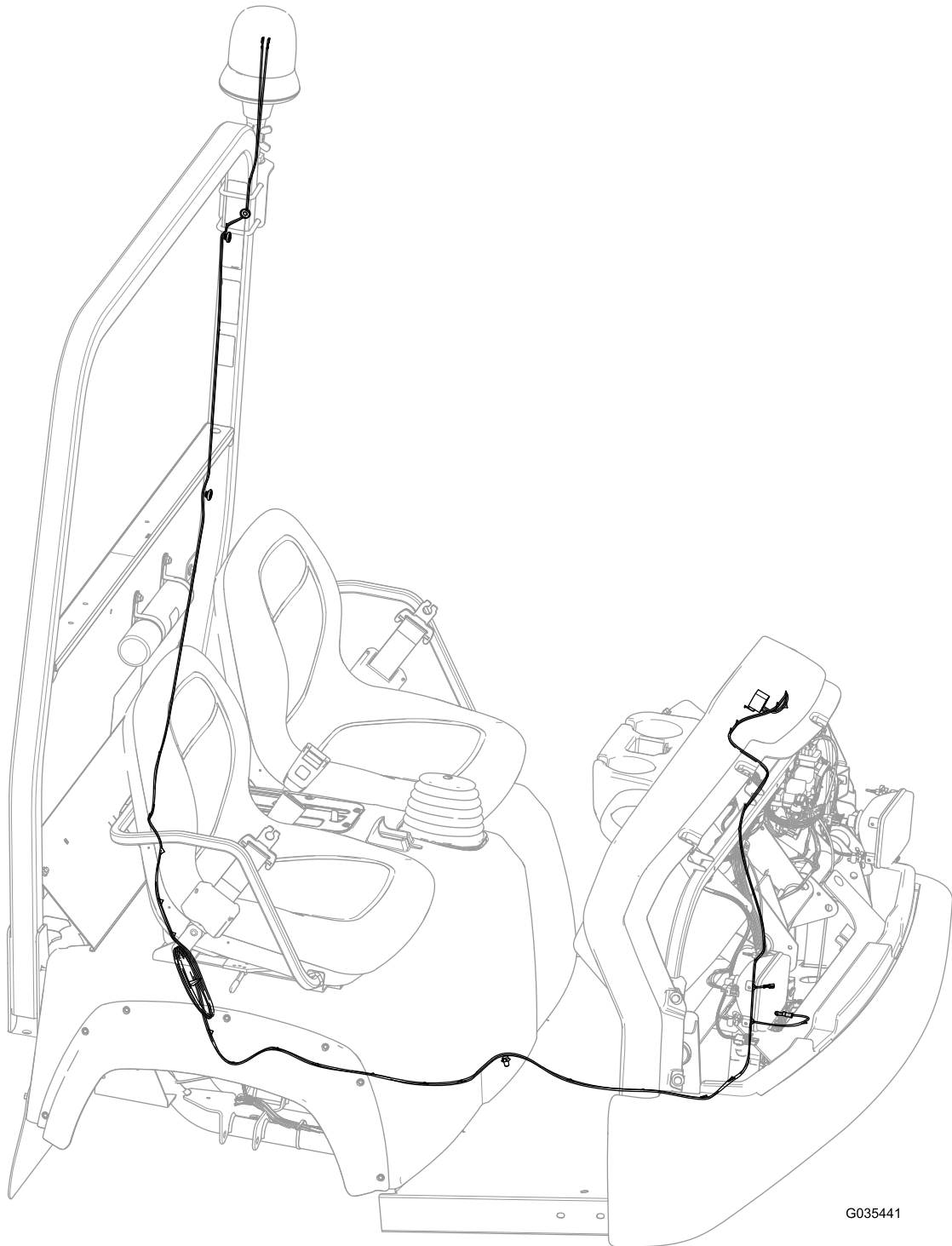


G035352

**Figure 1**

## For HD Utility Vehicles

Route the wire harness as shown in [Figure 2](#) and secure the wire harness to the machine with cable ties as necessary.



G035441

**Figure 2**

# 3

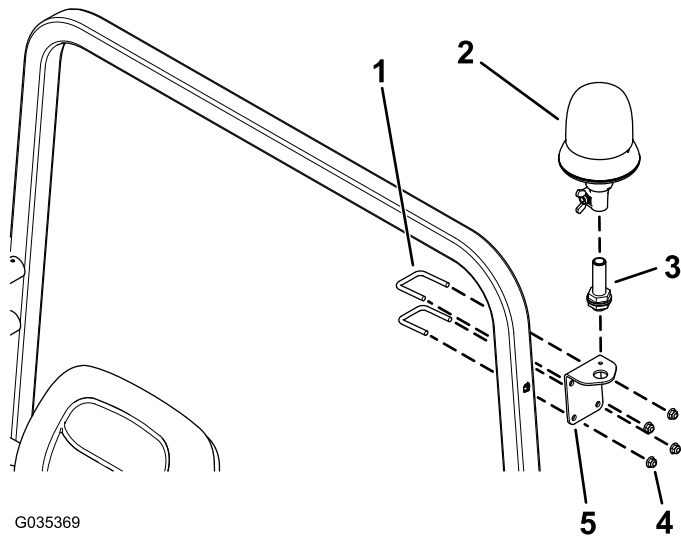
## Installing the Beacon Assembly

### Parts needed for this procedure:

1	Beacon bracket
2	U-bolt
4	Flange nut (3/8 inch)
1	Beacon socket
1	Beacon assembly

### Procedure

1. Loosely secure the beacon bracket to the side of the ROPS post with the 2 U-bolts and 4 flange nuts (3/8 inch) as shown in [Figure 3](#).



**Figure 3**

- |                  |                          |
|------------------|--------------------------|
| 1. U-bolt        | 4. Flange nut (3/8 inch) |
| 2. Beacon        | 5. Beacon bracket        |
| 3. Beacon socket |                          |

2. Mount the beacon socket to the beacon bracket with the included jam nut ([Figure 3](#)).
3. Plug the beacon into the socket and tighten the wing nut ([Figure 3](#)).

# 4

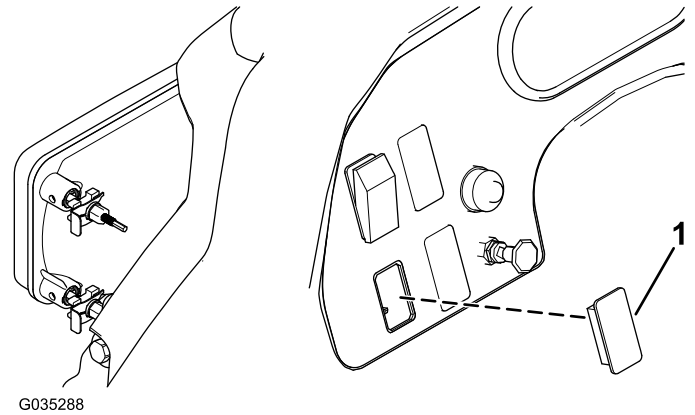
## Installing the Rocker Switch

### Parts needed for this procedure:

1	Rocker switch
1	Beacon-light decal

### Procedure

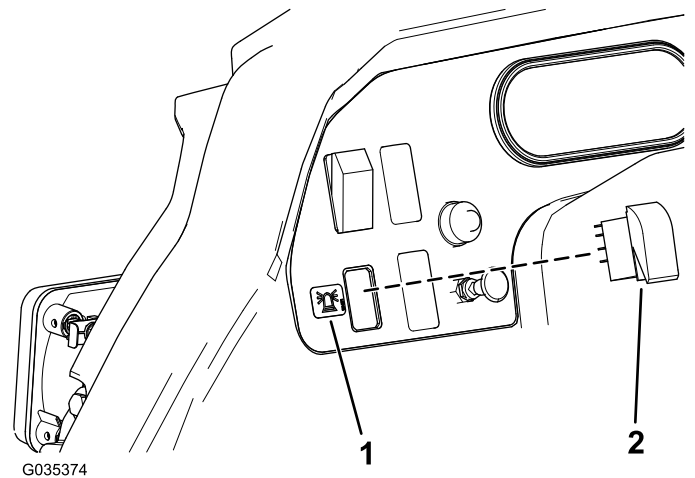
1. Remove the plastic plug from the left side of the dash ([Figure 4](#)).



**Figure 4**

1. Plastic plug

2. Insert the rocker switch into the opening and apply the beacon-light decal to the left of the rocker switch ([Figure 5](#)).



**Figure 5**

1. Beacon-light decal
2. Rocker switch

3. Connect the female connector attached to the wire harness to the rocker-switch blades ([Figure 6](#)).

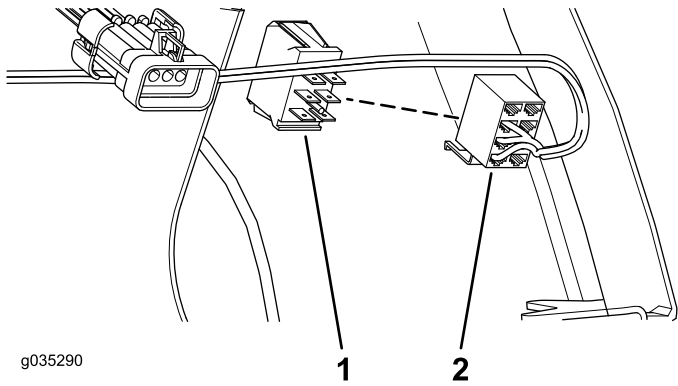


Figure 6

1. Rocker-switch blades      2. Female connector

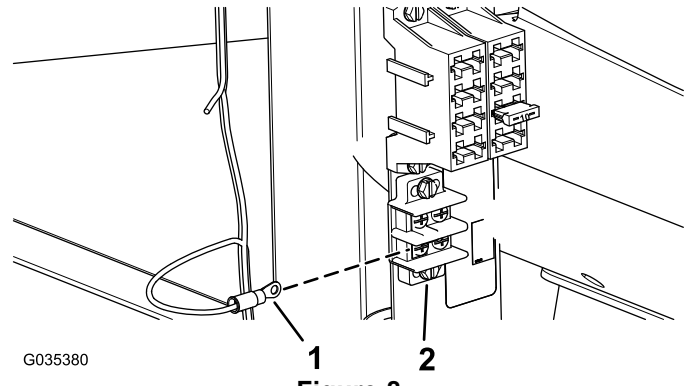


Figure 8

1. Wire-harness-terminal ring    2. Ground-block terminal

# 5

## Connecting the Wire Harness to the Ground-Block Terminal and Installing the Fuse

Parts needed for this procedure:

1	Fuse (10 A)
1	Fuse decal

### Procedure

1. Insert the fuse (10 A) into the fuse block and apply the fuse decal beneath the fuse block (Figure 7).

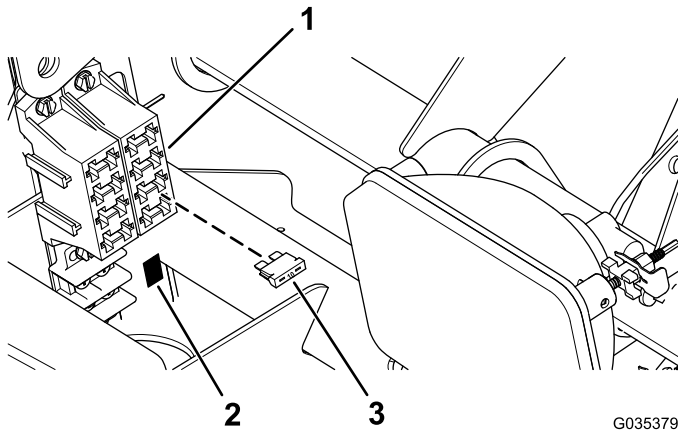


Figure 7

1. Fuse block                      3. Fuse (10 A)  
2. Fuse decal

# 6

## Connecting the Battery

No Parts Required

### Procedure

Connect the negative battery cable; refer to your *Operator's Manual*.

# 7

## Testing the Beacon

No Parts Required

### Procedure

- Push the rocker switch up to turn the beacon to the ON position.
- Push the rocker switch down to turn the beacon to the OFF position.

2. Connect the wire-harness-terminal ring to the ground-block terminal (Figure 8).

**Notes:**



**Count on it.**