

# ROPS Kit

Kit No. 126-9525 and 126-9526

## Installation Instructions

### ▲ WARNING

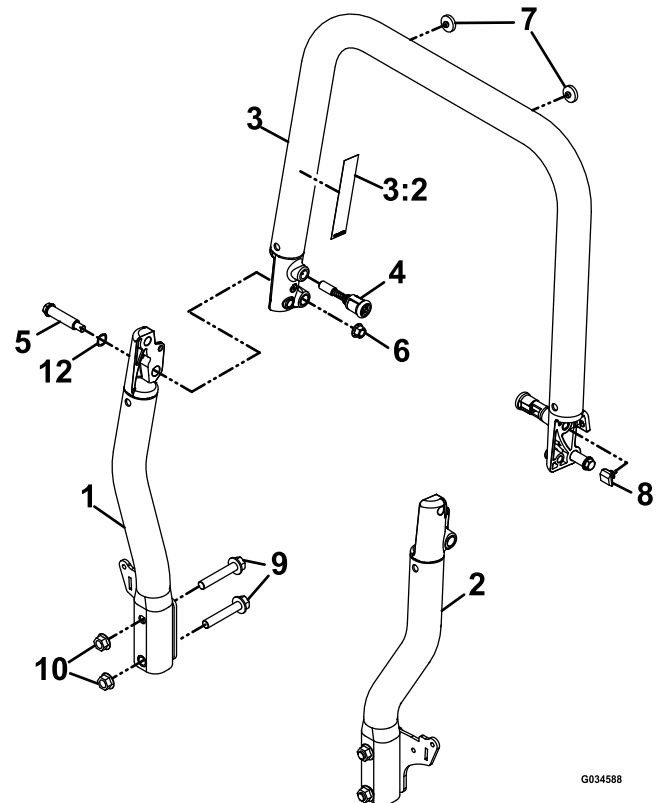
#### CALIFORNIA Proposition 65 Warning

This product contains a chemical or chemicals known to the State of California to cause cancer, birth defects, or reproductive harm.

## Loose Parts

Use the chart below to verify that all parts have been shipped.

Item	Part No.	Description	Qty
1	—	Wld-ROPS Leg RH	1
2	—	Wld-ROPS Leg LH	1
3	126-7838	Asm-ROPS Upper W/Decal	1
3:2	107-3069	Decal-Warning Folding ROPS	1
4	116-0104	Asm-Spring Pin	2
5	126-9209	Bolt-ROPS Shoulder Pivot	2
6	99-5107	Nut-Lock 1/2-13	2
7	109-9233	Bumper-Rubber Push-In	2
8	126-9966	Bumper-ROPS	2
9	126-9488	Screw-HHF 5/8-11 X 3 1/2 Gr 8	4
10	32128-50	Nut-Hex 5/8-11 Whizlock	4
12	119-4164	Washer-Wave	2



G034588

**Figure 1**

# Safety Alert Symbol

This Safety Alert Symbol (Figure 2) is used both in this instruction sheet and on the machine to identify important safety messages which must be followed to avoid accidents

This symbol means: **ATTENTION! BECOME ALERT! YOUR SAFETY IS INVOLVED!**



**Figure 2**  
Safety Alert Symbol

---

The safety alert symbol appears above information which alerts you to unsafe actions or situations and will be followed by the word **DANGER**, **WARNING**, or **CAUTION**.

**DANGER:** Indicates an imminently hazardous situation which, if not avoided, **Will** result in death or serious injury.

**WARNING:** Indicates a potentially hazardous situation which, if not avoided, **Could** result in death or serious injury.

**CAUTION:** Indicates a potentially hazardous situation which, if not avoided, **May** result in minor or moderate injury.

This manual uses two other words to highlight information. **Important** calls attention to special mechanical information and **Note** emphasizes general information worthy of special attention.

## **⚠ WARNING**

**While maintenance or adjustments are being made, someone could start the engine. Accidental starting of the engine could seriously injure you or other bystanders.**

**Remove the key from the ignition switch, engage parking brake, and pull the wire(s) off the spark plug(s) before you do any maintenance. Also push the wire(s) aside so it does not accidentally contact the spark plug(s).**

**Note:** Determine the left and right sides of the machine from the normal operating position.

**Note:** Park the unit on a level surface. Make sure all moving parts have stopped, parking brake is engaged, the key has been removed, and the spark plug wire has been disconnected. Allow unit to cool before starting these instructions.

## **⚠ WARNING**

**There is no rollover protection when the roll bar is down. Wheels dropping over edges, ditches, steep banks, or water can cause rollovers, which may result in serious injury, death or drowning.**

- **Do Not** remove the ROPS.
- **Keep** the roll bar in the raised and locked position and use seat belt.
- **Lower** the roll bar only when absolutely necessary.
- **Do Not** wear seat belt when the roll bar is down.
- **Drive** slowly and carefully.
- **Raise** the roll bar as soon as clearance permits.
- Be certain that the seat belt can be released quickly in the event of an emergency.
- Check carefully for overhead clearances (i.e. branches, doorways, and electrical wires) before driving under any objects and **Do Not** contact them.
- In the event of a rollover, take the unit to an Authorized Service Dealer to have the ROPS inspected.
- Replace a damaged ROPS. **Do Not** repair or revise.
- Any accessories, alterations, or attachments added to the ROPS must be approved the manufacturer.

## Removing the Existing Rollover Protection System (ROPS)

1. Disconnect the negative battery cable.
2. Remove and discard the upper ROPS tube and its hardware from the lower legs.
3. On the LH side of the machine, remove and retain the fuel cap and hardware attaching the fender to the frame.
4. Carefully lift the fender up and off the machine and set aside.
5. Re-install the fuel cap to prevent debris from getting in the tank.
6. On the RH side of the machine, remove and retain the hardware attaching the fender to the frame.
7. With the control panel still attached to the fender, pull the fender up and out and lay it on the tire.
8. Remove and retain the rear styling side brackets if equipped.
9. Remove and discard the hardware attaching the lower ROPS legs to the frame.
10. Carefully remove and discard the ROPS from the mower.

## Installing the Replacement Rollover Protection System (ROPS) Kit

1. Some units were built with 1/2 inch mounting bolts securing the ROPS to the frame. If necessary, use 21/32 inch drill bit (16.7 mm diameter hole) to carefully drill out the mounting holes in the frame; Do Not damage the fuel tank and/or lines.
2. Loosely install the lower ROPS legs onto the mower using two 5/8-11 x 3-1/2 inch grade 8 screws and two 5/8 inch whizlock nuts on each side as shown in [Figure 1](#).

**Important:** The mounting hardware must be installed as shown.

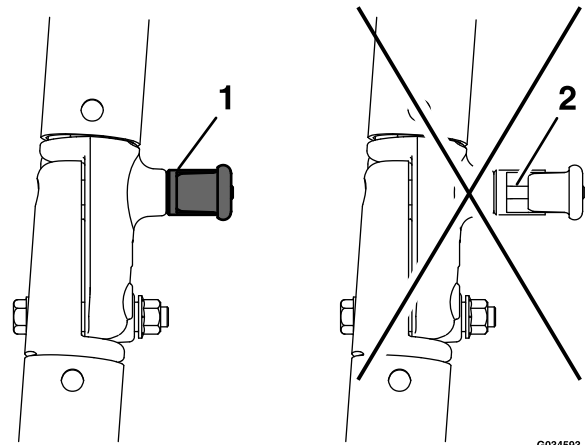
3. Install the shoulder pivot bolts into the castings in the ROPS lower legs and assemble the upper ROPS tube to the lower legs with the hardware shown in [Figure 1](#).
4. Tighten the two hinge bolts and then the four grade 8 mounting bolts. Torque the mounting bolts to 90-100 ft-lb (122-136 N-m).
5. Reinstall the fenders with the hardware retained steps [3](#) and [6](#) of **Removing the Existing Rollover Protection System (ROPS)** section.
6. Reinstall the rear styling side brackets if removed.

7. Reconnect the negative battery cable.

## Check Rollover Protections Systems (Roll Bar) Knobs

**Service Interval:** Before each use or daily

Check that both the mounting hardware and the knobs are in good working condition. Make sure the knobs are fully engaged with the ROPS in the raised position. The upper hoop of the roll bar may need to be pushed forward or pulled rearward to get both knobs fully engaged.



**Figure 3**

1. Engaged

2. Partially engaged — Do Not operate with ROPS in this condition

## Check Seat Belt

**Service Interval:** Before each use or daily

Visually inspect seat belt for wear, cuts, and proper operation of retractor and buckle. Replace before operating if damaged.