



GrandStand® Multi Force Mower

With 52in or 60in TURBO FORCE® Cutting Unit

Model No. 74523—Serial No. 316000001 and Up

Model No. 74529—Serial No. 316000001 and Up

Addendum

Removing the Mower Deck

1. Shut off the engine, wait for all moving parts to stop, engage the parking brake, and remove the key.
2. Use the height-of-cut lever to lower the mower deck onto wood blocks.
3. Remove the mower-deck belt; refer to Replacing the Mower-Deck Belt in the *Operator's Manual*.
4. Remove the 2 bolts and 2 nuts connecting the strut bracket to the frame (Figure 1).

Note: Retain the fasteners with the strut bracket.

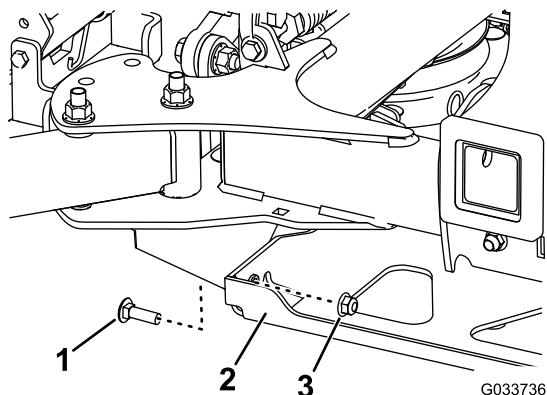


Figure 1

Right side shown

- | | |
|------------------|--------|
| 1. Bolt | 3. Nut |
| 2. Strut bracket | |

5. Remove the 2 bolts, 2 nuts, and washer connecting the mower-deck hangers to the lift plates for both sides of the mower deck (Figure 2 and Figure 3).

Note: Retain the mounting hardware with the deck chains.

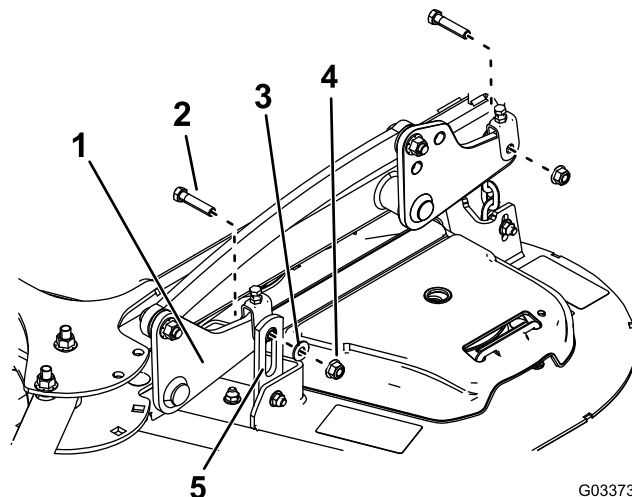


Figure 2

Left Side of 52-inch Deck Shown

- | | |
|---------------|----------------------|
| 1. Lift plate | 4. Nut |
| 2. Bolt | 5. Mower-deck hanger |
| 3. Washer | |

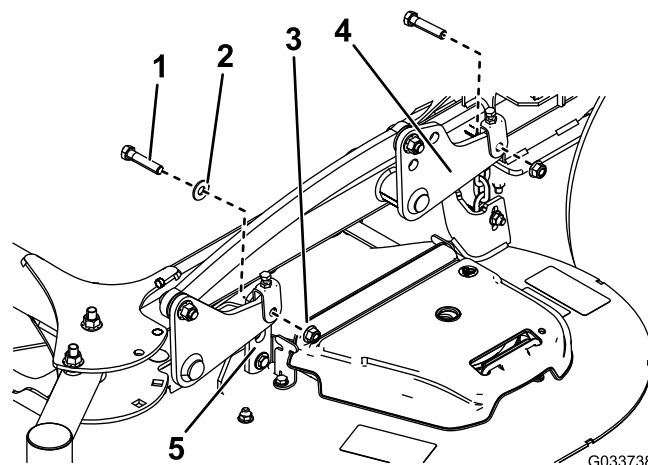


Figure 3

Left Side of 60-inch Deck Shown

- | | |
|-----------|----------------------|
| 1. Bolt | 4. Lift plate |
| 2. Washer | 5. Mower-deck hanger |
| 3. Nut | |

6. Rotate the caster wheels forward.
7. Slide the mower deck out from under the machine.



Installing the Mower Deck

1. Slide the mower deck under the machine.
2. Rotate the caster wheels rearward.
3. Connect the deck hangers to the lift plates using the 2 bolts, 2 nuts, and 2 washers that you retained for each side of the mower deck.

Note: Mount the front hanger brackets on the outside of the front lift arms for 52-inch decks (Figure 2). Mount the front hanger brackets on the inside of the front lift arms for 60-inch decks (Figure 3).

Note: Torque the bolts to 38 to 49 N·m (28 to 36 ft-lb).

4. Install the 2 bolts that you retained to connect the strut bracket to the frame (Figure 1).

Note: Torque the bolts to 61 to 75 N·m (45 to 55 ft-lb).

5. Install the mower-deck belt; refer to Replacing the Mower-Deck Belt in the *Operator's Manual*.
6. Level the mower deck; refer to Leveling the Mower Deck from Side to Side and Leveling the Mower Deck from Front to Rear in the *Operator's Manual*.